

**NATIONAL PRIMARY CARE INFECTIOUS DISEASES
SENTINEL SURVEILLANCE FORTNIGHTLY REPORT**

Combining data from The Australian Sentinel Practices Research Network (ASPREN)*
and the Victorian Sentinel Practitioners Influenza Network (VicSPIN)*

No. 02, 2020 - 13th January — 26th January 2020



Figure 1. Map of ILI activity by jurisdiction, weeks 03 - 04, 2020.

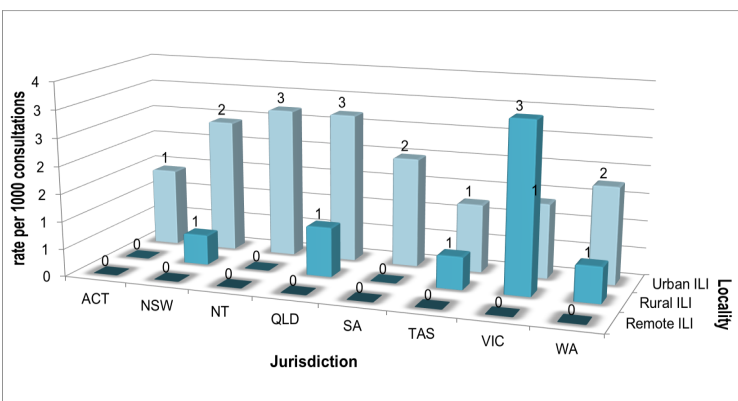


Figure 2. ASPREN + VicSPIN rate of ILI by locality and jurisdiction, weeks 03 - 04, 2020.

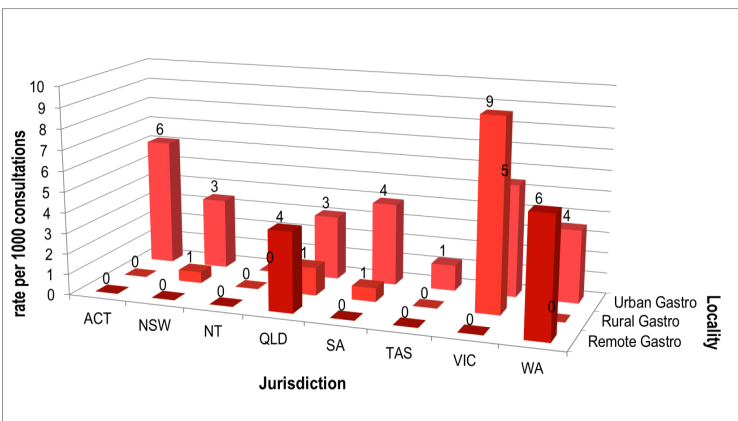


Figure 3. ASPREN rate of gastroenteritis by locality and jurisdiction, weeks 03 - 04, 2020.

NATIONAL SUMMARY

■ Influenza-like-illness levels remain steady below baseline levels

6 Case of influenza have been detected in this reporting period
5 x Influenza A
1 x Influenza B

33% Influenza positivity during the reporting period.

7 Cases of influenza have been detected this year:
6 x Influenza A
1 x Influenza B

■ Gastroenteritis levels remain steady at baseline levels

**SYNDROMIC SURVEILLANCE
REPORTING**

Reports were received from 232 reporters from 8 states and territories during the reporting period. During weeks 03 and 04 reporters saw a total of 34,837 patients.

INFLUENZA-LIKE-ILLNESS (ILI)

Nationally, ILI notifications slightly increased during the period with 50 notifications being reported in weeks 03—04. ILI rates reported in this period remained steady at 1 and 2 cases per 1000 consultations (weighted) respectively. This was similar to the previous fortnight where rates were 2 and 1 case per 1000 consultations in weeks 01 and 02 respectively. For the same reporting period in 2019, ILI rates were similar at 2 cases per 1000 consultations for weeks 03 and 04 (see Fig. 5).

GASTROENTERITIS

Nationally, gastroenteritis notifications increased over the period with 94 notifications reported. Gastroenteritis rates reported in this period decreased to 3 cases per 1000 consultations in both weeks 03 and 04, compared to 3 and 2 cases per 1000 consultations in weeks 01 and 02 respectively (see Fig. 5).

* ASPREN is funded by the Commonwealth's Department of Health, Office of Health Protection, Vaccine Preventable Disease Surveillance Section.

* VicSPIN is funded by Melbourne Health and the Victorian Infectious Diseases Reference Laboratory.

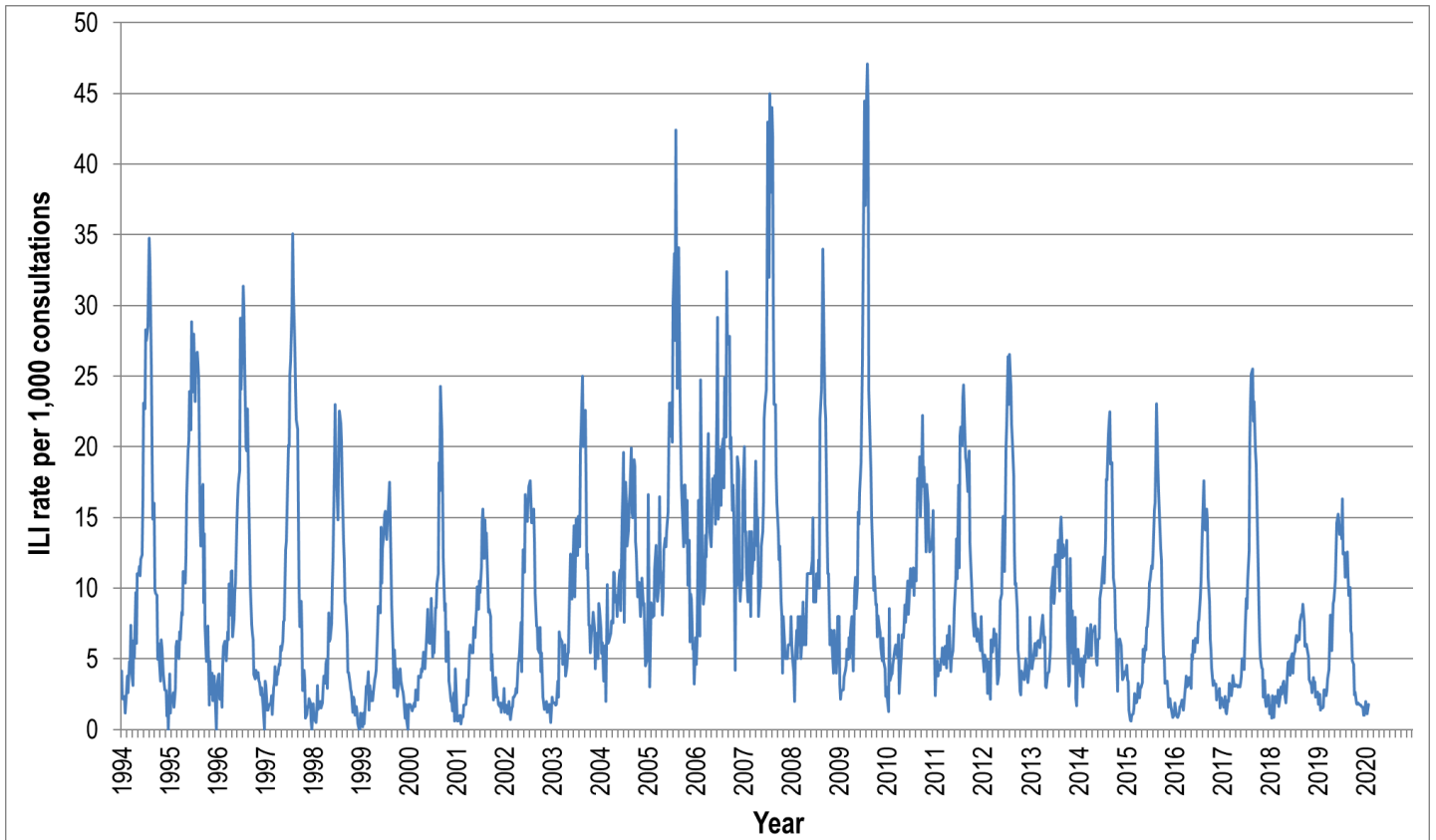


Figure 4. ASPREN ILI rates 1994 - 2020.

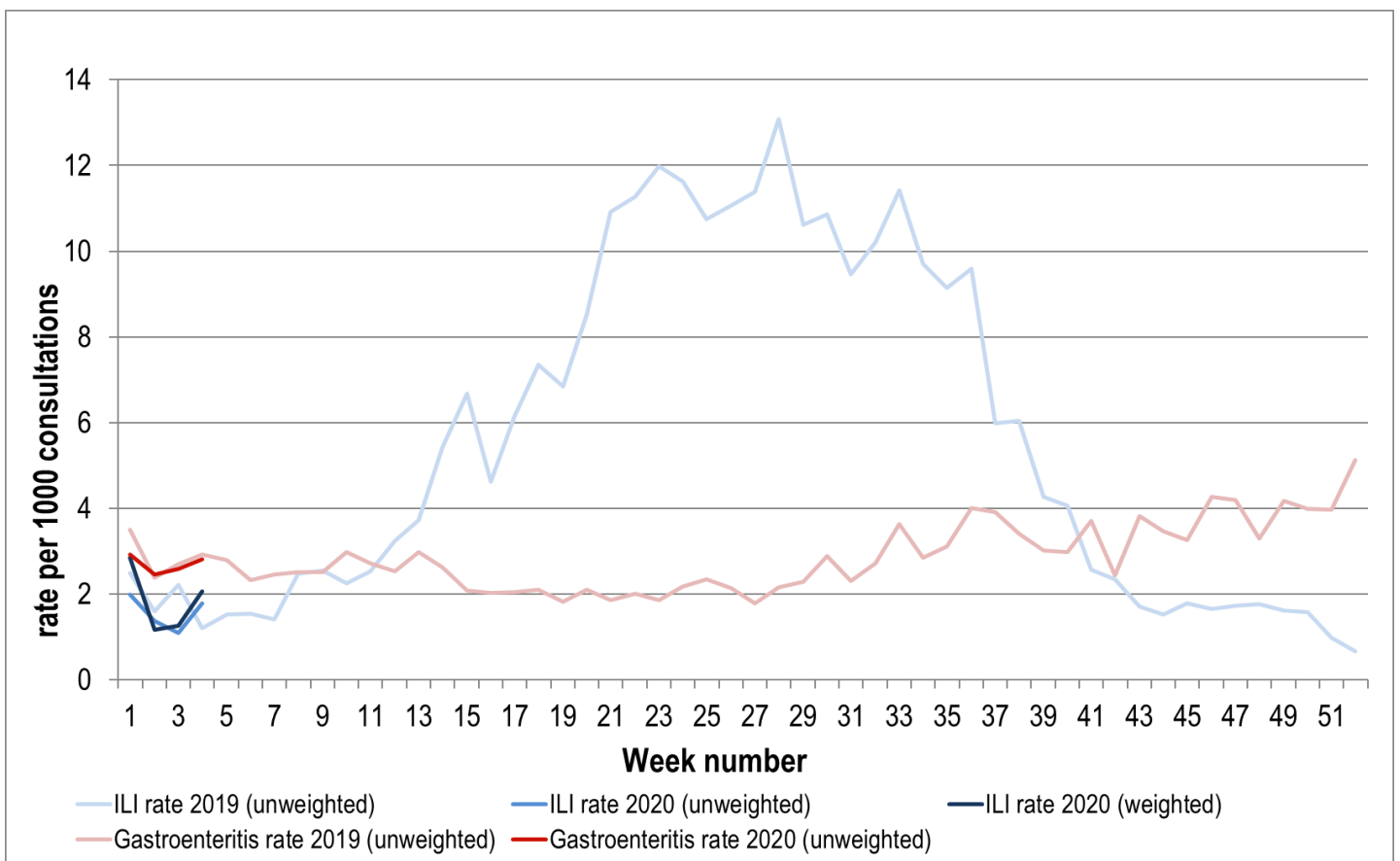


Figure 5. ASPREN + VicSPIN ILI and ASPREN gastroenteritis rates 2019-20. Weighted rates are weighted to account for population size differences between jurisdictions, using population estimates from the 2011 Australian Census.

VIROLOGICAL SURVEILLANCE

36% of all ILI patients were swab tested during weeks 01 - 02 (see Figure 6).

6 cases of Influenza were detected during this period. There were also 2 cases of Rhinovirus detected making it the most common respiratory virus circulating the nation at present (see figure 8).

Viral laboratory data are provided by SA Pathology and VicSPIN laboratories.

	Reporting Period	YTD
	13 Jan - 26 Jan 2020	1 Jan - 26 Jan 2020
Total number of ILI notifications	50	95
Number of swab tests performed	18	27
% ILI patients tested	36%	28%
% of swab tests positive for influenza	33%	26%

Figure 6. ASPREN + VicSPIN virological surveillance results overview for 2020 #

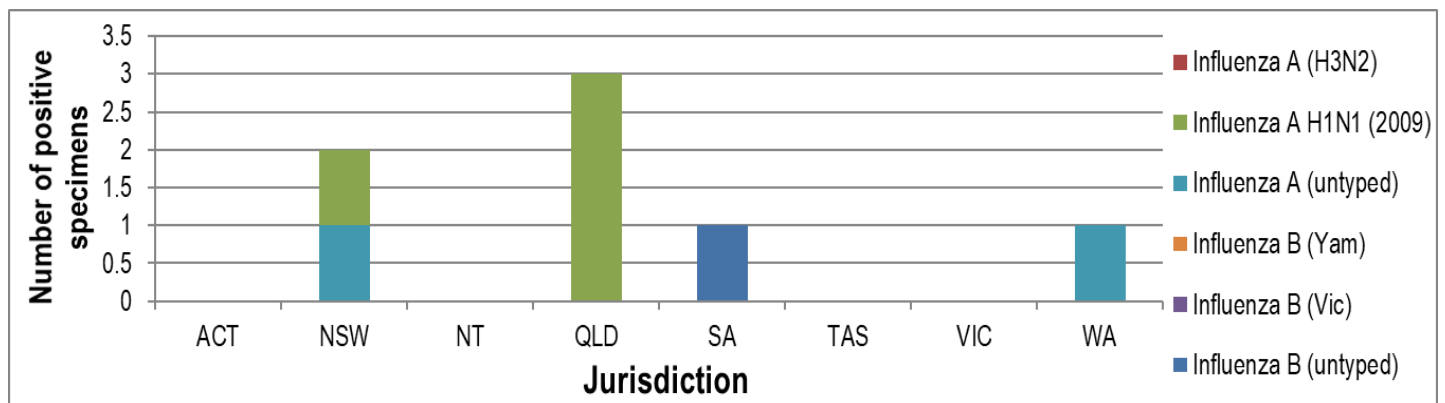


Figure 7. ASPREN + VicSPIN influenza subtype analysis by jurisdiction for 2020 #

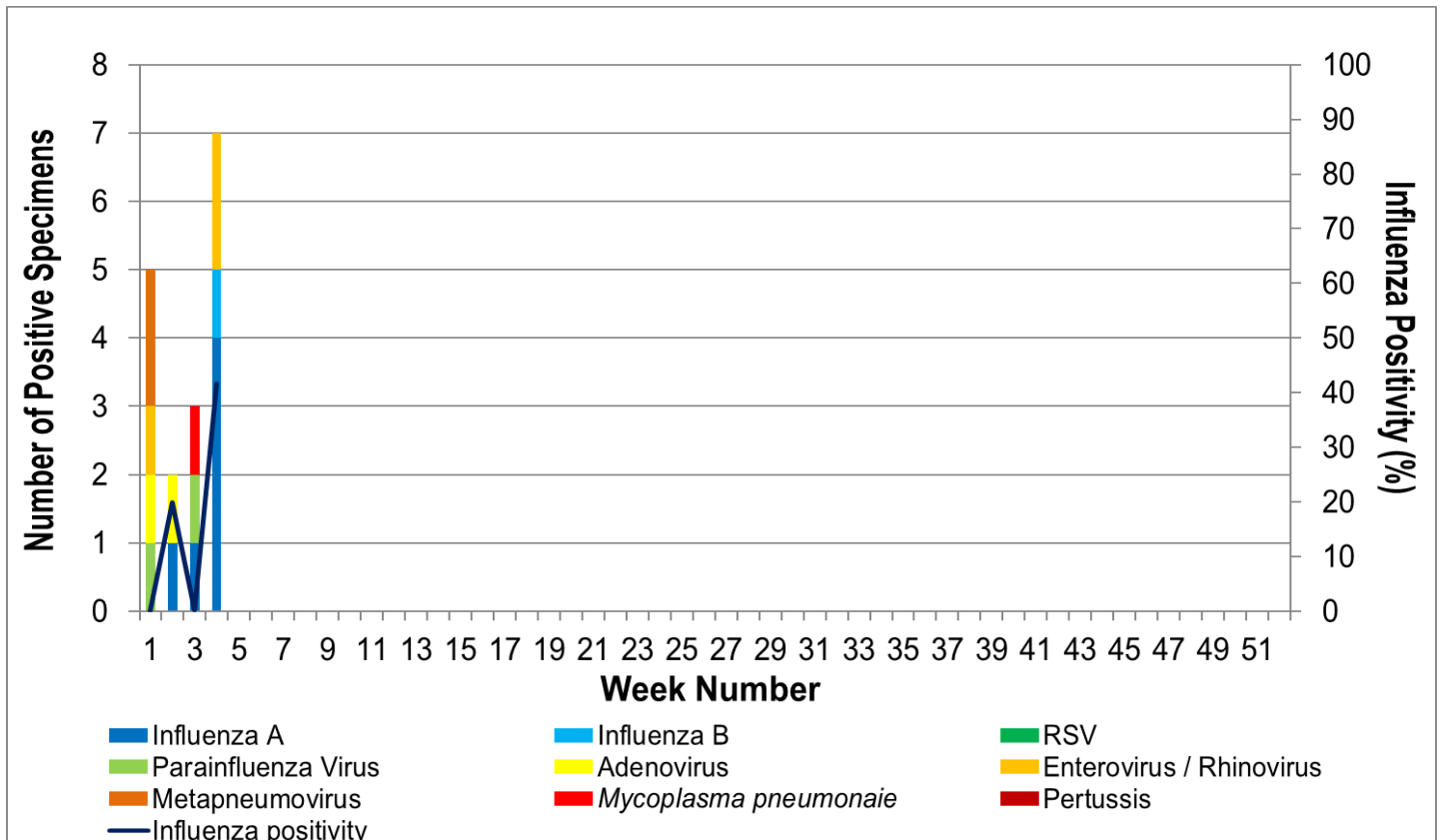


Figure 8. ASPREN, VicSPIN laboratory detection of influenza and other respiratory viruses for 2020 #

The Australian Sentinel Practices Research Network is supported by the Australian Government Department of Health (the Department). The opinions expressed in this paper are those of the authors, and do not necessarily represent the views of the Department.

Please note: This report is based on data available as at 11 February 2020. Delays in the reporting of data may cause data to change retrospectively.