

**NATIONAL PRIMARY CARE INFECTIOUS DISEASES
SENTINEL SURVEILLANCE FORTNIGHTLY REPORT**

Combining data from The Australian Sentinel Practices Research Network (ASPREN)*
and the Victorian Sentinel Practitioners Influenza Network (VicSPIN)*

No. 01, 2021 - 1st January — 17th January 2021

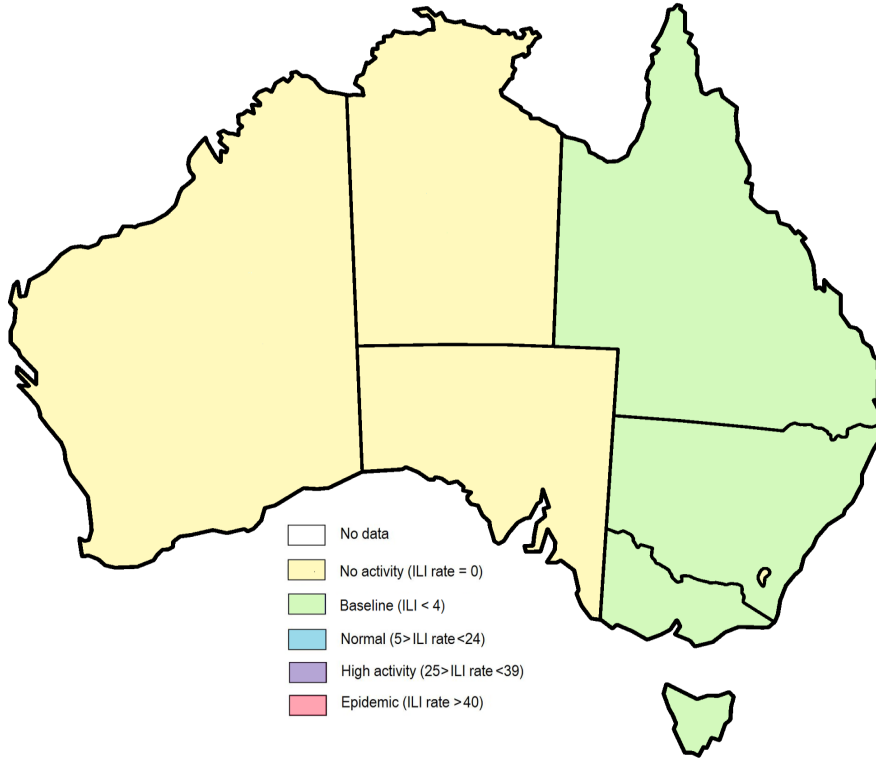


Figure 1. Map of ILI activity by jurisdiction, weeks 01 - 02, 2021.

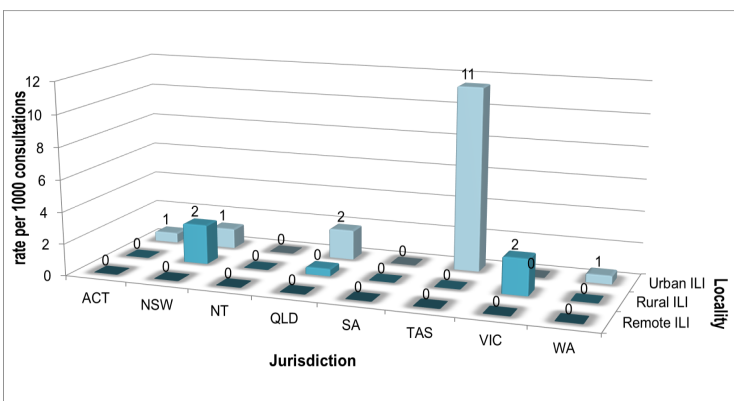


Figure 2. ASPREN + VicSPIN rate of ILI by locality and jurisdiction, weeks 01 - 02, 2021.

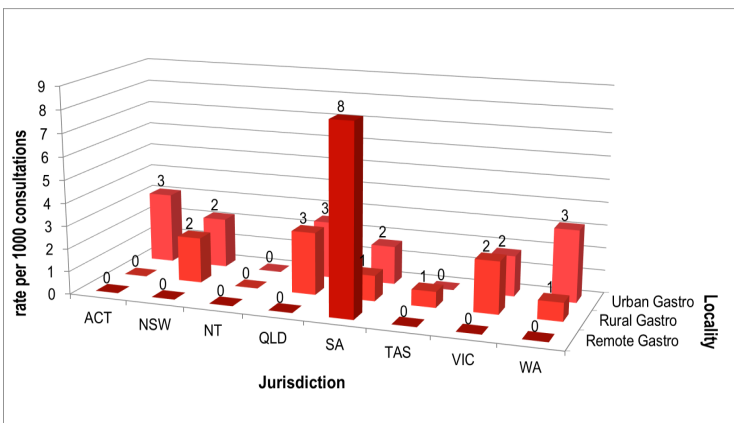


Figure 3. ASPREN rate of gastroenteritis by locality and jurisdiction, weeks 01 - 02, 2021.

NATIONAL SUMMARY

Influenza-like-illness levels remain steady below baseline levels

0 Case of influenza have been detected in this reporting period
0 x Influenza A
0 x Influenza B

0% Influenza positivity during the reporting period.

0 Cases of influenza have been detected this year:
0 x Influenza A
0 x Influenza B

Gastroenteritis levels remain steady below baseline levels

**SYNDROMIC SURVEILLANCE
REPORTING**

Reports were received from 213 reporters from 8 states and territories during the reporting period. During weeks 01 and 02 reporters saw a total of 30,255 patients.

INFLUENZA-LIKE-ILLNESS (ILI)

Nationally, ILI notifications increased during the period with 24 notifications being reported in weeks 01—02. ILI rates reported in this period remained steady at 1 case per 1000 consultations (weighted). This was similar to the previous fortnight where rates were 1 case per 1000 consultations in weeks 51 and 52. For the same reporting period in 2020, ILI rates were higher at 3 and 1 case per 1000 consultations for weeks 01 and 02 (see Fig. 5).

GASTROENTERITIS

Nationally, gastroenteritis notifications decreased over the period with 64 notifications reported. Gastroenteritis rates reported in this period decreased to 3 and 1 cases per 1000 consultations in both weeks 01 and 02 respectively, compared to 3 and 4 cases per 1000 consultations in weeks 51 and 52 respectively (see Fig. 5).

* ASPREN is funded by the Commonwealth's Department of Health, Office of Health Protection, Vaccine Preventable Disease Surveillance Section.

* VicSPIN is funded by Melbourne Health and the Victorian Infectious Diseases Reference Laboratory.

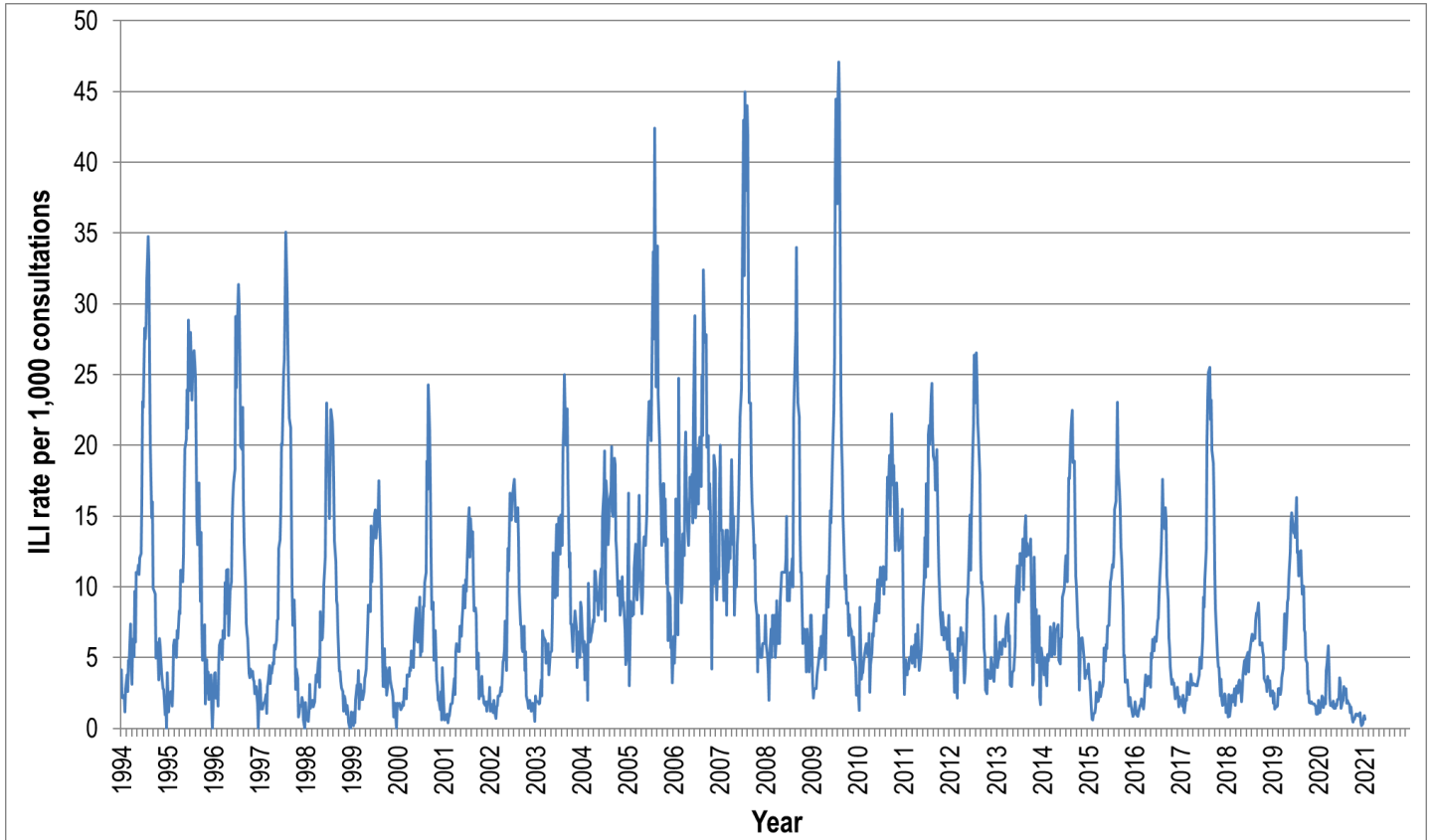


Figure 4. ASPREN ILI rates 1994 - 2021.

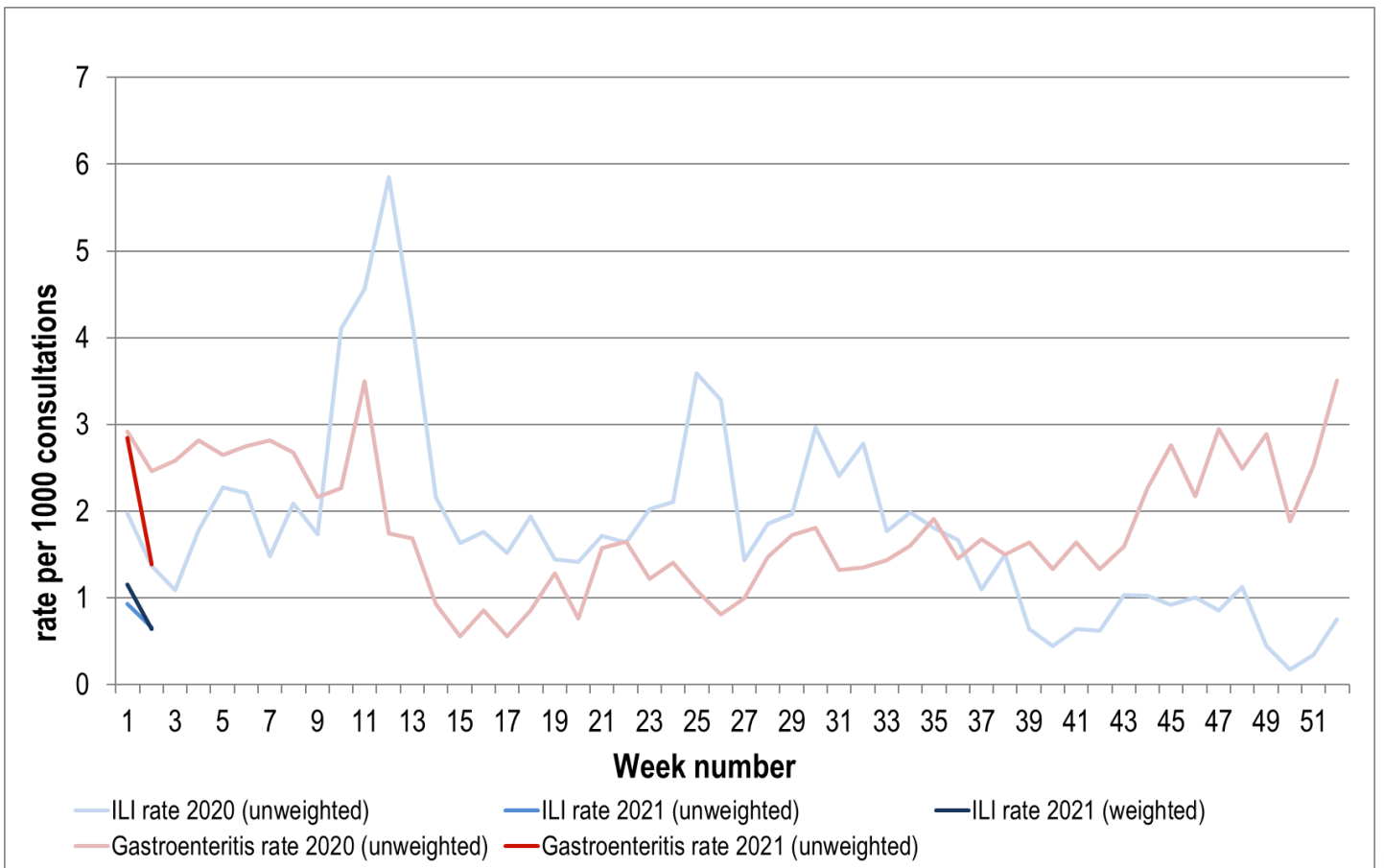


Figure 5. ASPREN + VicSPIN ILI and ASPREN gastroenteritis rates 2020-21.

VIROLOGICAL SURVEILLANCE

46% of all ILI patients were swab tested during weeks 01 and 02 (see Figure 6).

No cases of Influenza were detected during this period. There were 6 cases of Rhinovirus detected making it the most common respiratory virus circulating the nation at present (see figure 8).

Viral laboratory data are provided by SA Pathology and VicSPIN laboratories.

	Reporting Period	YTD
	01 Jan - 17 Jan 2021	01 Jan - 17 Jan 2021
Total number of ILI notifications	24	24
Number of swab tests performed	11	11
% ILI patients tested	46%	46%
% of swab tests positive for influenza	0%	0%

Figure 6. ASPREN + VicSPIN virological surveillance results overview for 2021 #

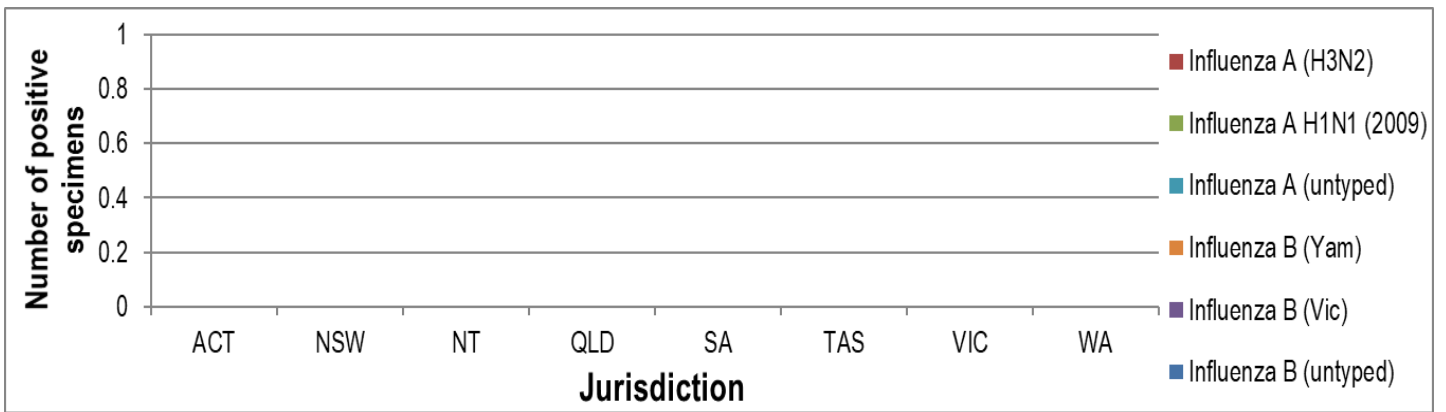


Figure 7. ASPREN + VicSPIN influenza subtype analysis by jurisdiction for 2021 #

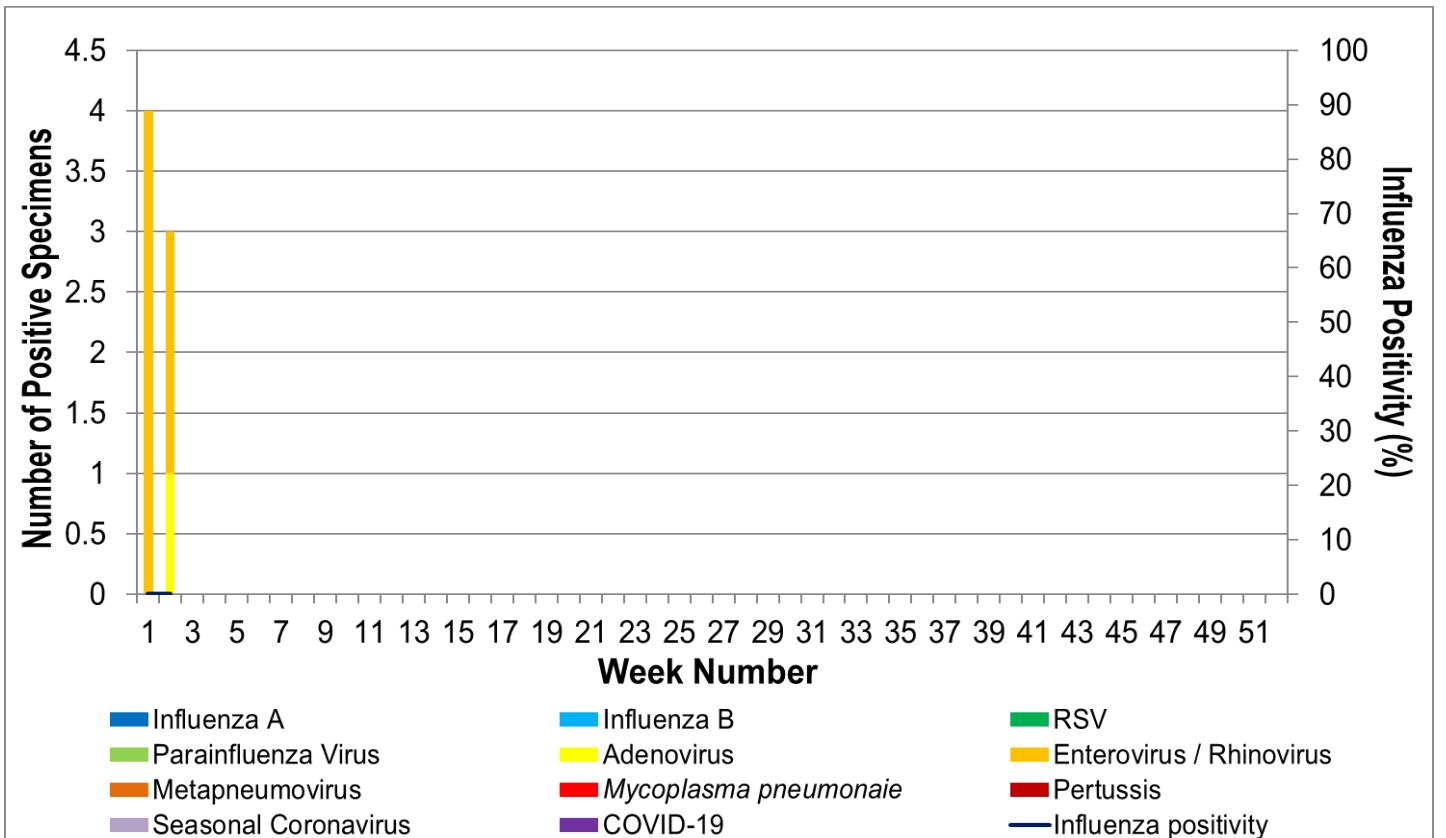


Figure 8. ASPREN, VicSPIN laboratory detection of influenza and other respiratory viruses for 2021 #

The Australian Sentinel Practices Research Network is supported by the Australian Government Department of Health (the Department). The opinions expressed in this paper are those of the authors, and do not necessarily represent the views of the Department.

Please note: This report is based on data available as at 28 January 2021. Delays in the reporting of data may cause data to change retrospectively.