

**NATIONAL PRIMARY CARE INFECTIOUS DISEASES
SENTINEL SURVEILLANCE FORTNIGHTLY REPORT**

From The Australian Sentinel Practices Research Network (ASPREN) *

No. 06, 2024 - 11th March — 24th March 2024

NATIONAL SUMMARY



Influenza-like-illness levels are increasing

9

Cases of influenza have been detected in this reporting period
7 x Influenza A
2 x Influenza B

10%

Influenza positivity during the reporting period.

25

Cases of influenza have been detected this year:
22 x Influenza A
3 x Influenza B



Gastroenteritis levels are increasing

**SYNDROMIC SURVEILLANCE
REPORTING**

Reports were received from 289 reporters from 8 states and territories during the reporting period. During weeks 11 and 12 reporters saw a total of 43,518 patients.

INFLUENZA-LIKE-ILLNESS (ILI)

Nationally, ILI notifications significantly increased during the period with 175 notifications being reported in weeks 11–12. ILI rates reported in this period were 5 cases per 1000 consultations (weighted). This was slightly higher than the previous fortnight where rates were 5 and 4 cases per 1000 consultations in weeks 9 and 10 respectively. For the same reporting period in 2023, ILI rates were lower at 3 cases per 1000 consultations for weeks 11 and 12 (see Fig. 5).

GASTROENTERITIS

Nationally, gastroenteritis notifications significantly increased to 102 notifications reported. Gastroenteritis rates reported in this period slightly increased to 2 cases per 1000 consultations in weeks 10 and 12, compared to 1 and 2 cases per 1000 consultations in weeks 9 and 10 respectively (see Fig. 5).

* ASPREN is funded by the Commonwealth's Department of Health, Office of Health Protection, Vaccine Preventable Disease Surveillance Section.

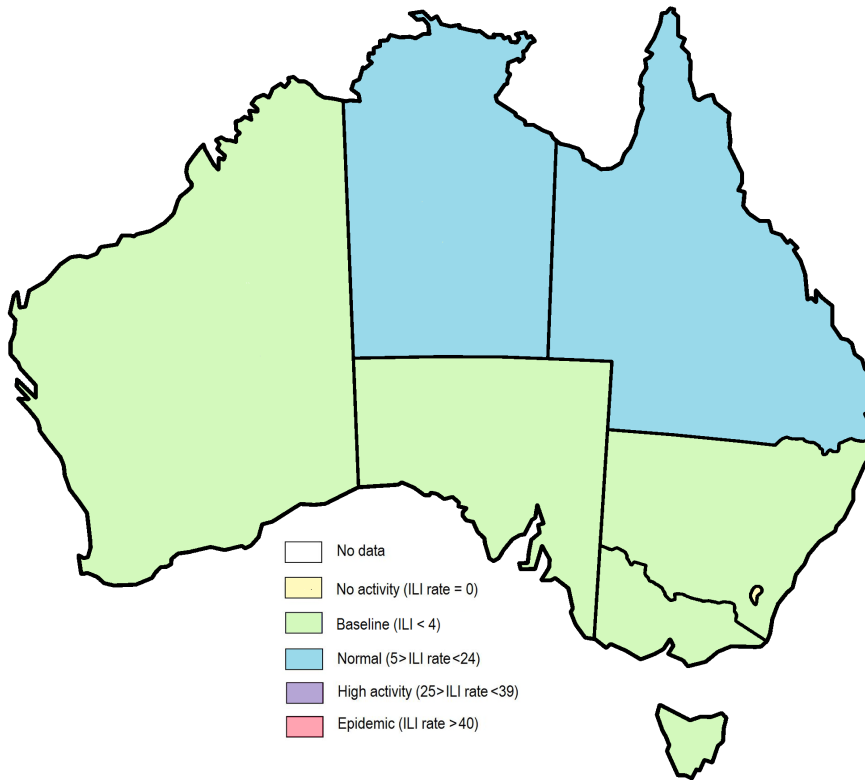


Figure 1. Map of ILI activity by jurisdiction, weeks 11 - 12, 2024.

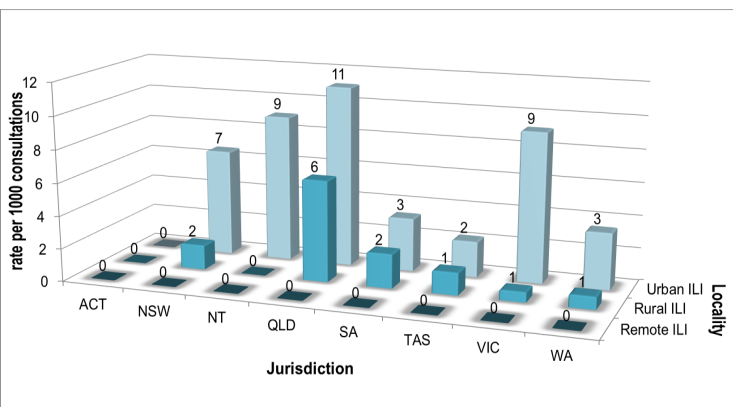


Figure 2. ASPREN rate of ILI by locality and jurisdiction, weeks 11 - 12, 2024.

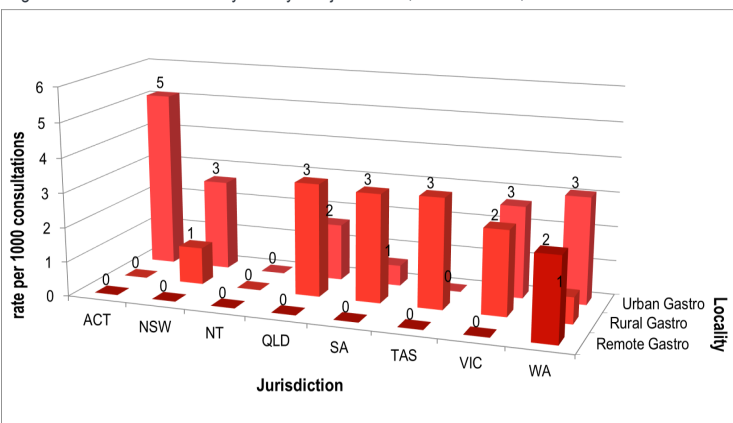


Figure 3. ASPREN rate of gastroenteritis by locality and jurisdiction, weeks 11 - 12, 2024.

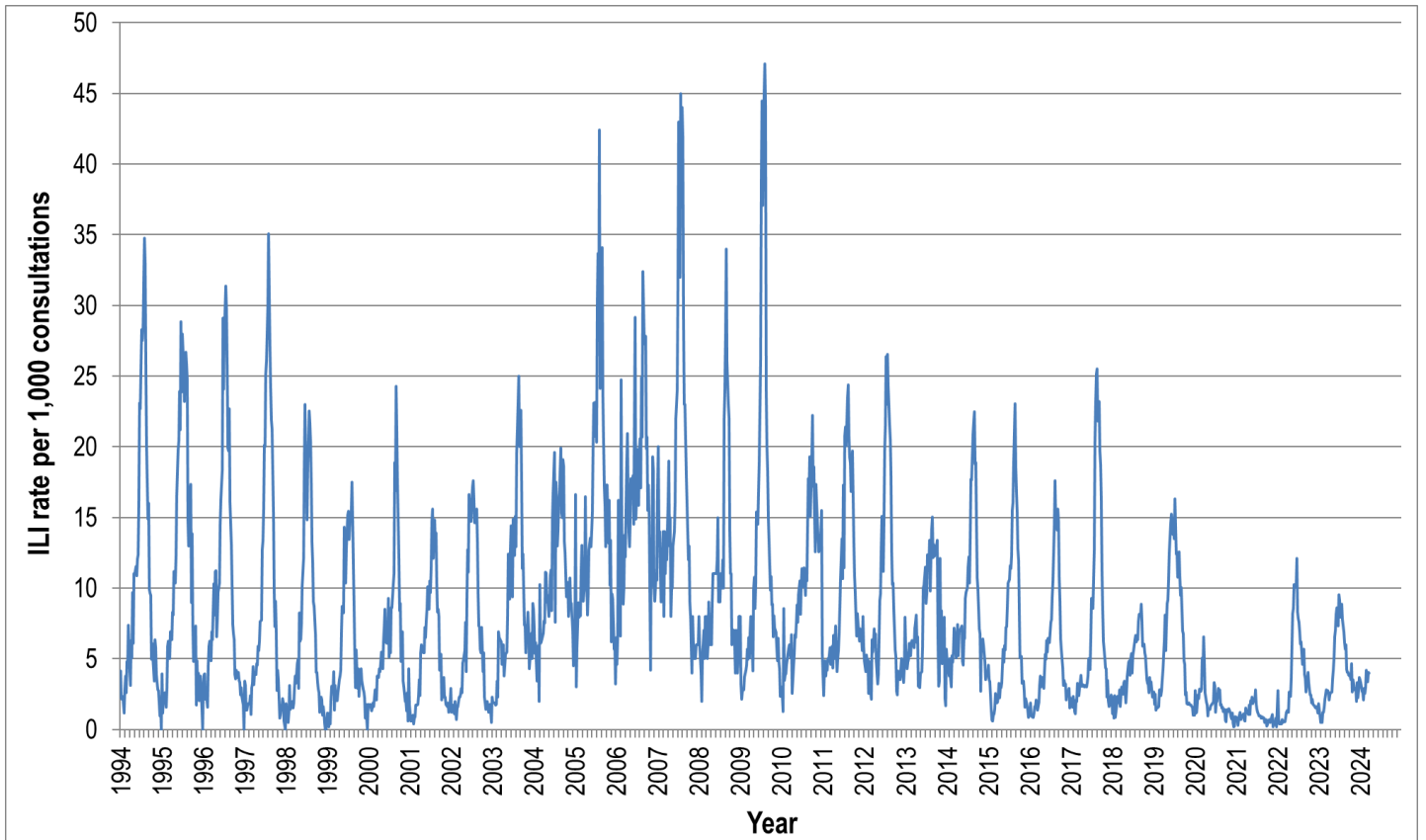


Figure 4. ASPREN ILI rates 1994 - 2024.

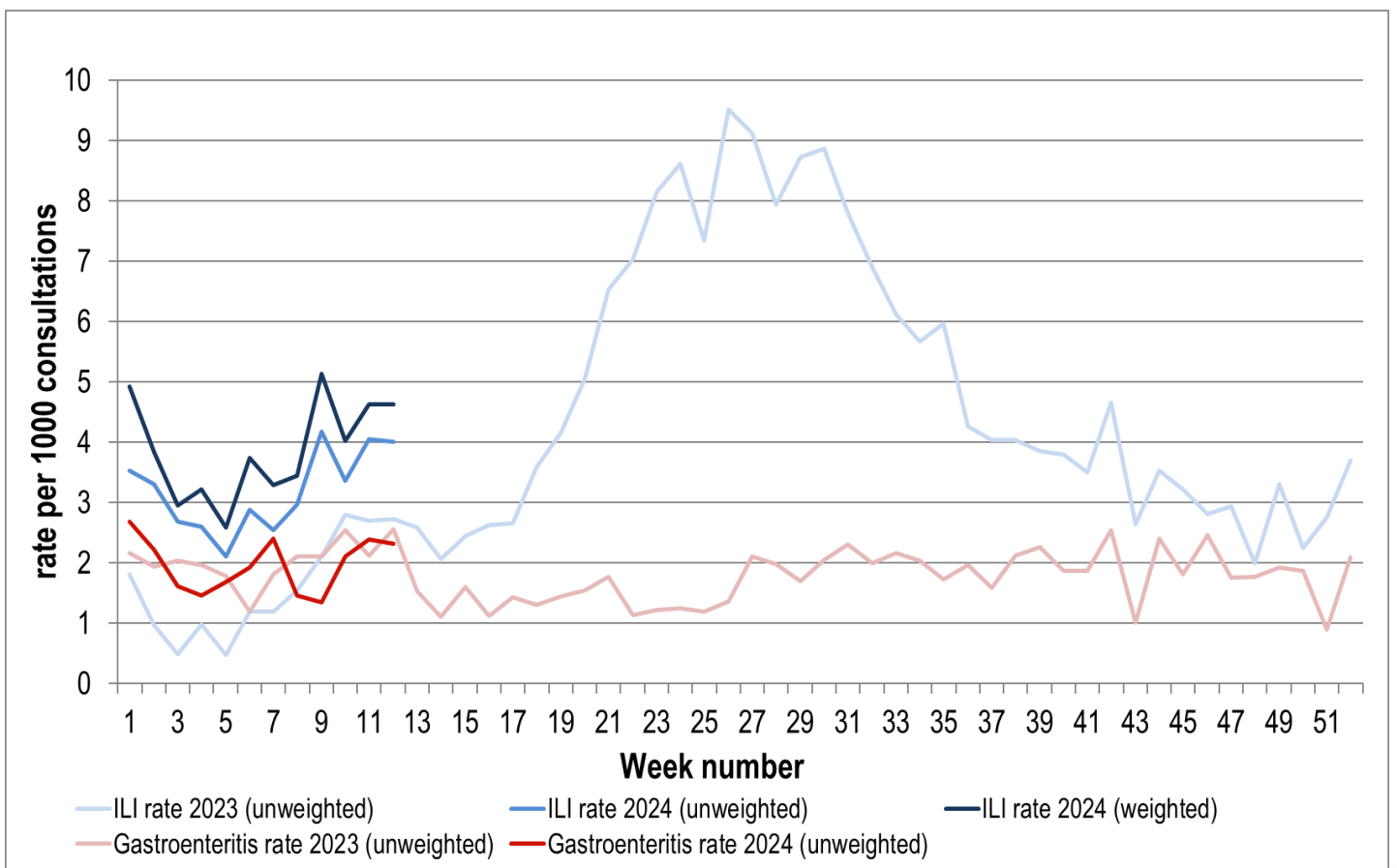


Figure 5. ASPREN ILI and gastroenteritis rates 2023-24. Weighted rates are weighted to account for population size differences between jurisdictions, using population estimates from the 2011 Australian Census.

VIROLOGICAL SURVEILLANCE

53% of all ILI patients were swab tested during weeks 11 and 12 (see Figure 6).

7 cases of Influenza A, 2 cases of Influenza B and 5 cases of SARS-CoV-2 were detected during this period. There were 28 cases of Rhinovirus detected making it the most common respiratory virus circulating the nation at present (see figure 8).

Viral laboratory data is provided by SA Pathology laboratory.

	Reporting Period	
	11 March - 24 March 2024	YTD 1 Jan - 24 March 2024
Total number of ILI notifications	175	749
Number of swab tests performed	93	303
% ILI patients tested	53%	40%
% of swab tests positive for influenza	10%	8%

Figure 6. ASPREN virological surveillance results overview for 2024 #

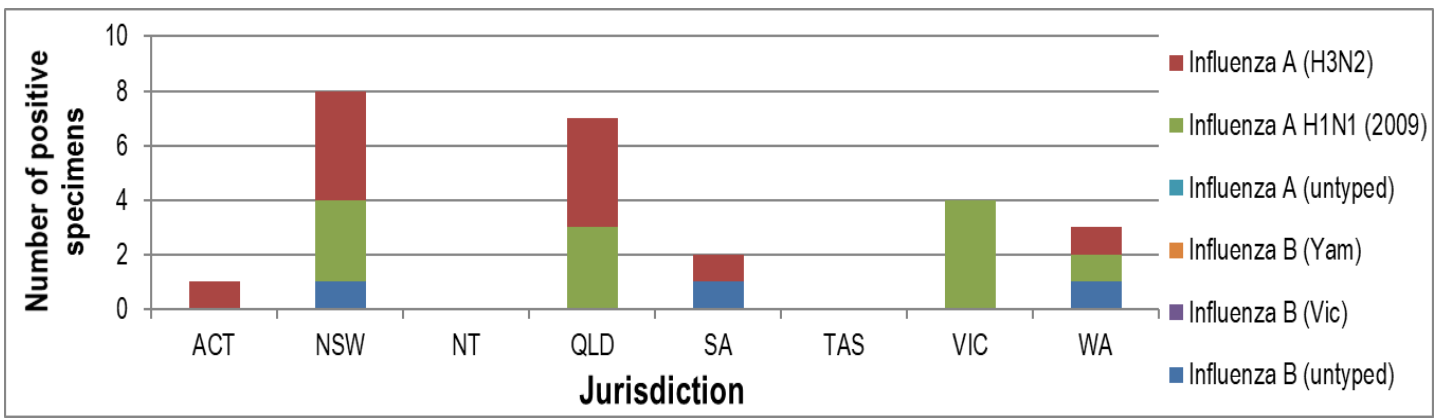


Figure 7. ASPREN influenza subtype analysis by jurisdiction for 2024 #

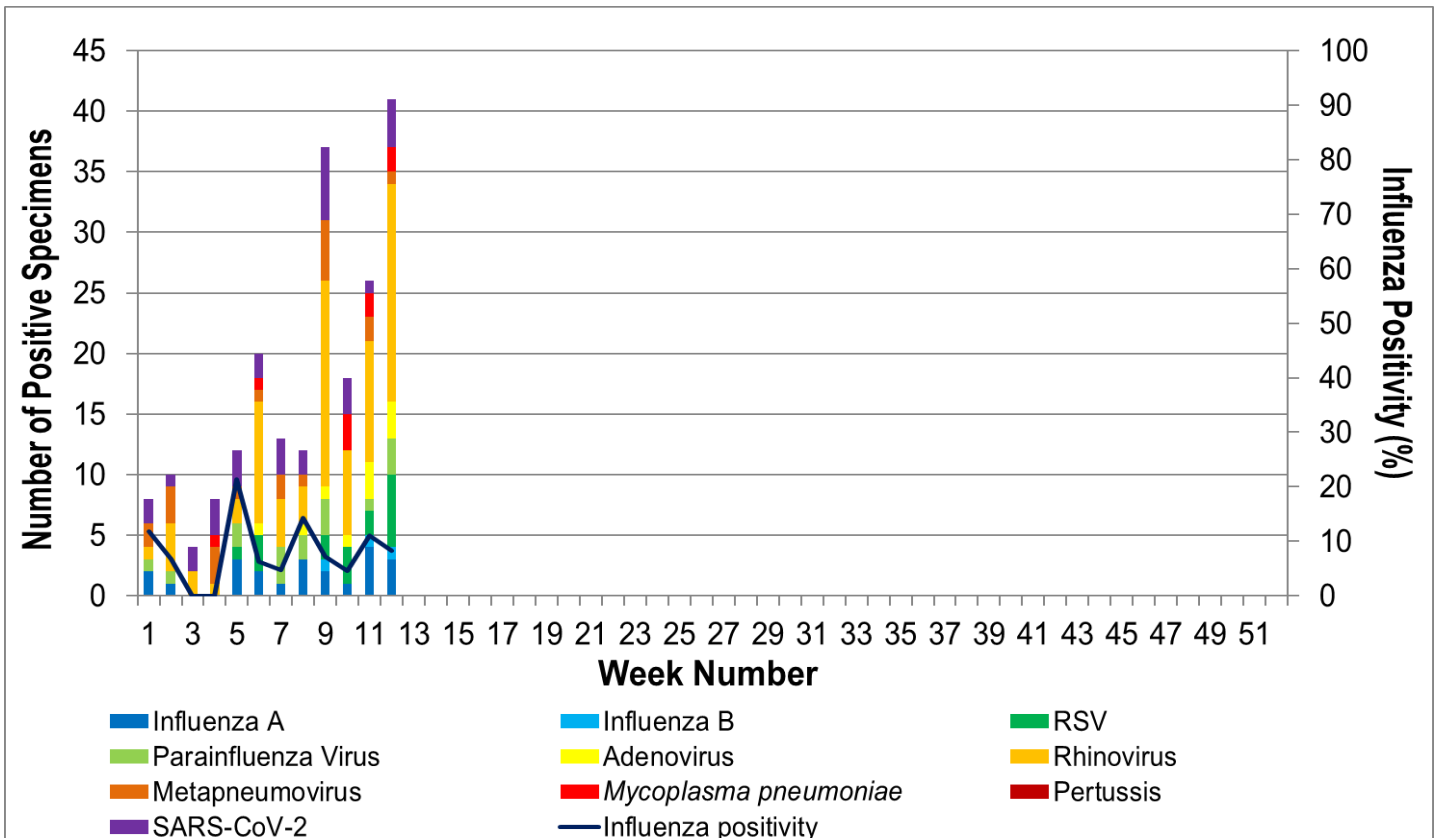


Figure 8. ASPREN, laboratory detection of influenza and other respiratory viruses for 2024 #

The Australian Sentinel Practices Research Network is supported by the Australian Government Department of Health (the Department). The opinions expressed in this paper are those of the authors, and do not necessarily represent the views of the Department.

Please note: This report is based on data available as at 28 March 2024. Delays in the reporting of data may cause data to change retrospectively.