


**NATIONAL PRIMARY CARE INFECTIOUS DISEASES  
SENTINEL SURVEILLANCE FORTNIGHTLY REPORT**

Combining data from The Australian Sentinel Practices Research Network (ASPREN)\* and the Victorian Sentinel Practitioners Influenza Network (VicSPIN)\*

No. 19, 2021 - 13th September — 26th September 2021


**NATIONAL SUMMARY**

 Influenza-like-illness levels remain steady below baseline levels

**0** Case of influenza have been detected in this reporting period  
0 x Influenza A  
0 x Influenza B

**0%** Influenza positivity during the reporting period.

**0** Cases of influenza have been detected this year:  
0 x Influenza A  
0 x Influenza B

 Gastroenteritis levels remain steady below baseline levels

**SYNDROMIC SURVEILLANCE  
REPORTING**

Reports were received from 226 reporters from 8 states and territories during the reporting period. During weeks 37 and 38 reporters saw a total of 43,220 patients.

**INFLUENZA-LIKE-ILLNESS (ILI)**

Nationally, ILI notifications decreased during the period with 27 notifications being reported in weeks 37—38. ILI rates reported in this period were 1 case per 1000 consultations (weighted). This was similar to the previous fortnight where rates were 1 case per 1000 consultations in weeks 35 and 36. For the same reporting period in 2020, ILI rates were similar at 1 case per 1000 consultations for weeks 37 and 38 (see Fig. 5).

**GASTROENTERITIS**

Nationally, gastroenteritis notifications were similar over the period with 53 notifications reported. Gastroenteritis rates reported in this period were similar at 1 case per 1000 consultations in both weeks 37 and 38, compared to 1 case per 1000 consultations in weeks 35 and 36 (see Fig. 5).

\* ASPREN is funded by the Commonwealth's Department of Health, Office of Health Protection, Vaccine Preventable Disease Surveillance Section.

\* VicSPIN is funded by Melbourne Health and the Victorian Infectious Diseases Reference Laboratory.

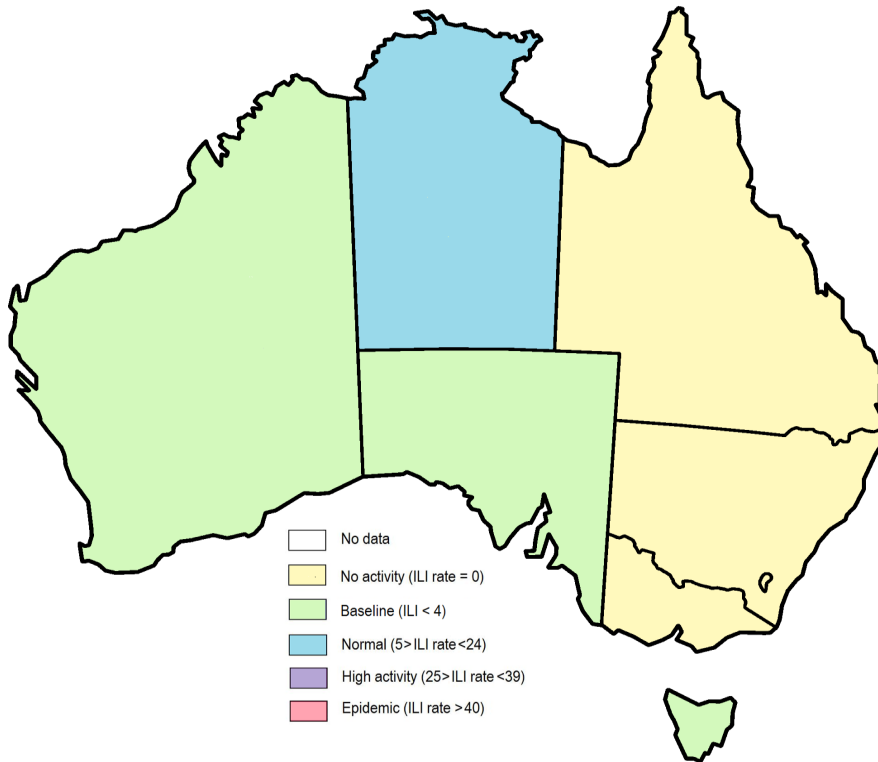


Figure 1. Map of ILI activity by jurisdiction, weeks 37 - 38, 2021.

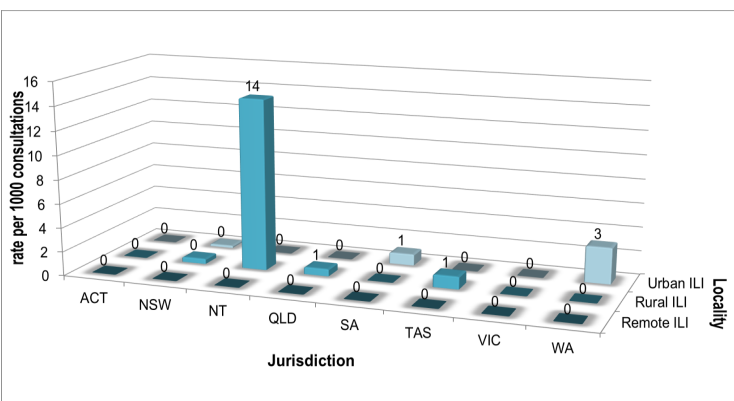


Figure 2. ASPREN + VicSPIN rate of ILI by locality and jurisdiction, weeks 37 - 38, 2021.

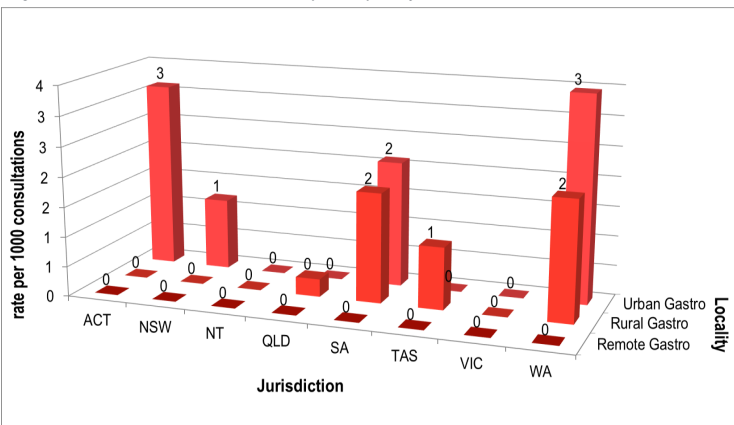


Figure 3. ASPREN rate of gastroenteritis by locality and jurisdiction, weeks 37 - 38, 2021.

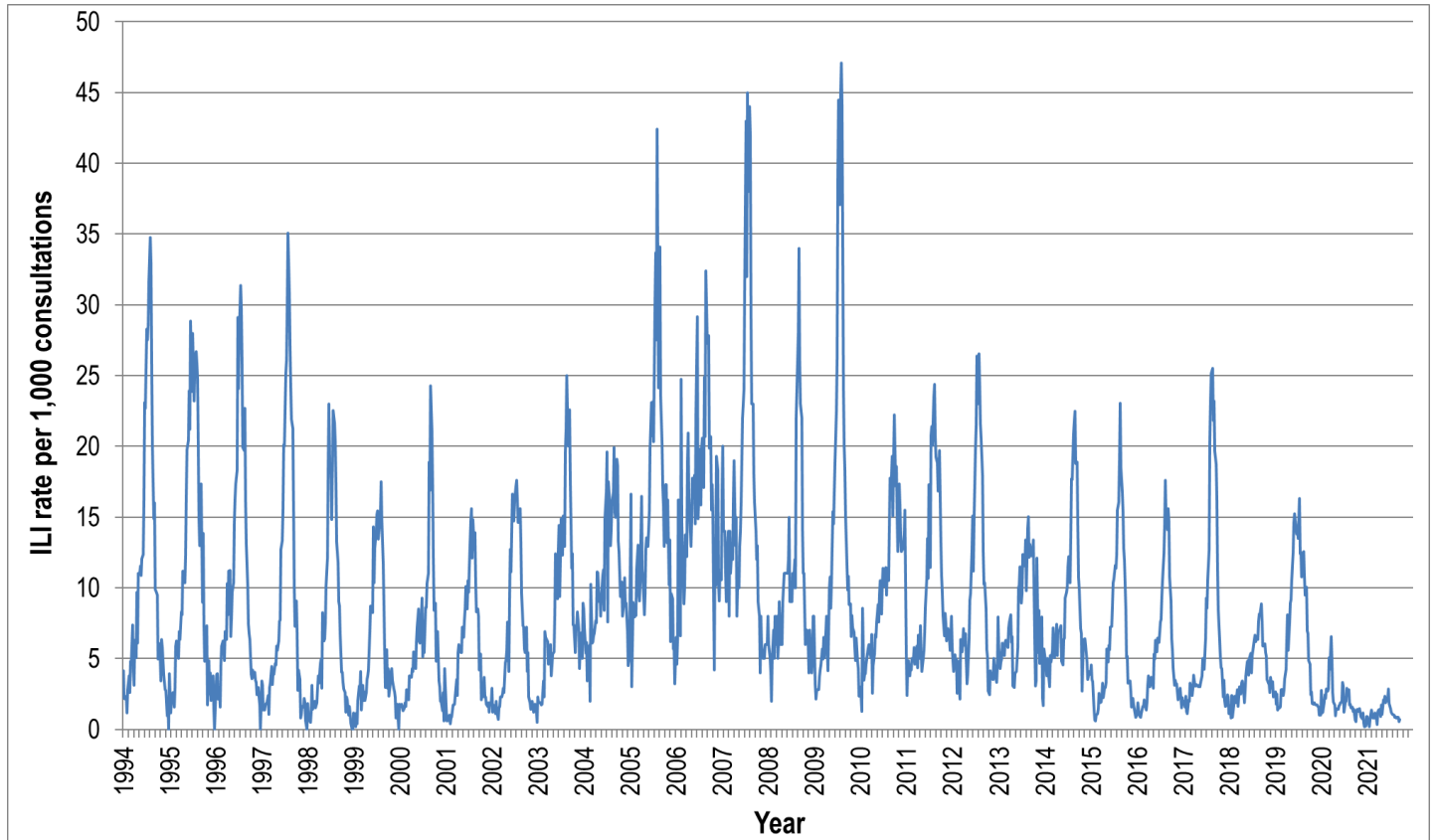


Figure 4. ASPREN ILI rates 1994 - 2021.

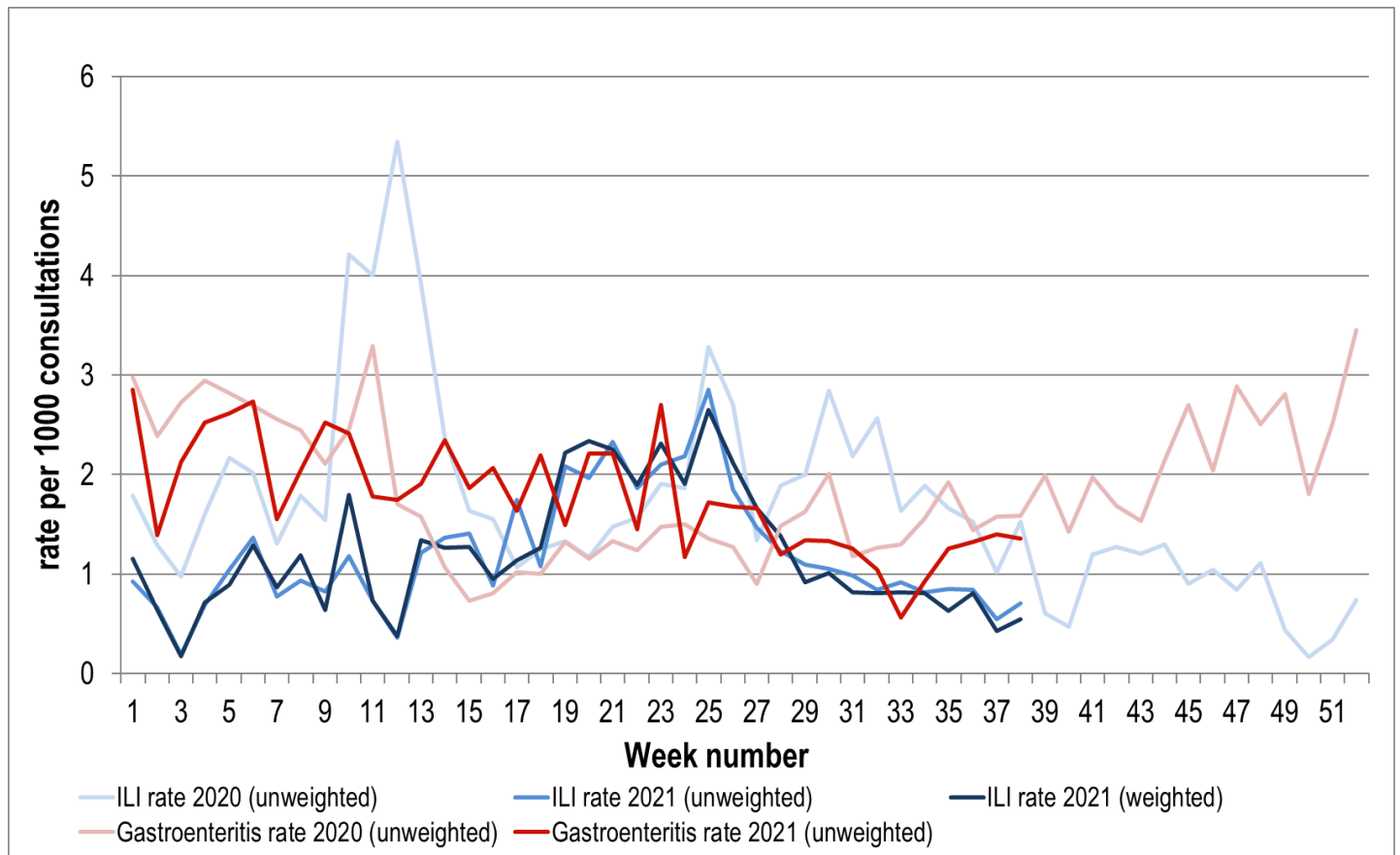


Figure 5. ASPREN + VicSPIN ILI and ASPREN gastroenteritis rates 2020-21. Weighted rates are weighted to account for population size differences between jurisdictions, using population estimates from the 2011 Australian Census.

### VIROLOGICAL SURVEILLANCE

37% of all ILI patients were swab tested during weeks 37 and 38 (see Figure 6).

No cases of Influenza were detected during this period. There was 1 case of Rhinovirus detected making it the most common respiratory virus circulating the nation at present (see figure 8).

# Viral laboratory data are provided by SA Pathology and VicSPIN laboratories.

	Reporting Period 13 Sept - 26 Sept 2021	YTD 01 Jan - 26 Sept 2021
Total number of ILI notifications	27	963
Number of swab tests performed	10	388
% ILI patients tested	37%	40%
% of swab tests positive for influenza	0%	0%

Figure 6. ASPREN + VicSPIN virological surveillance results overview for 2021 #

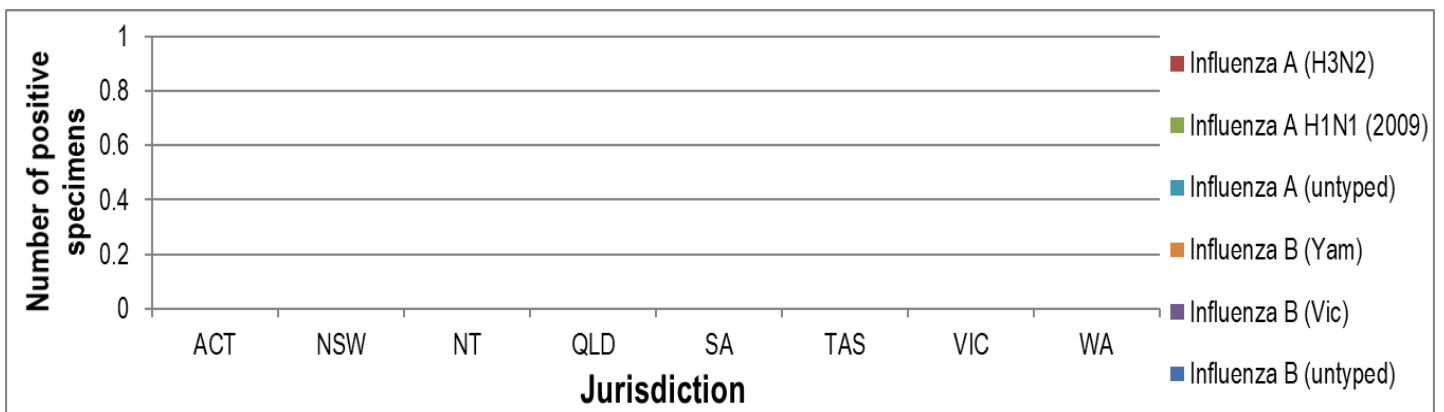


Figure 7. ASPREN + VicSPIN influenza subtype analysis by jurisdiction for 2021 #

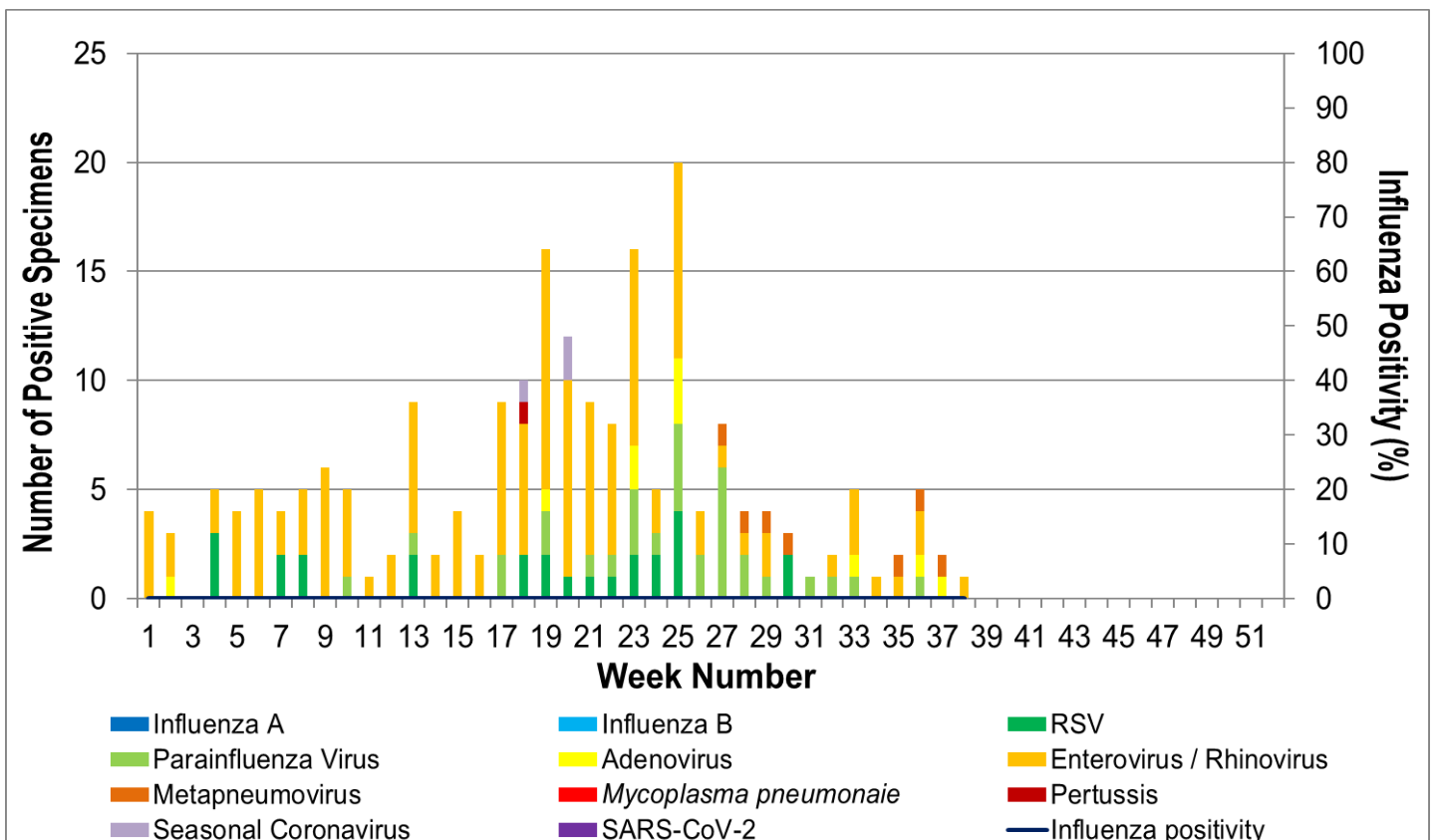


Figure 8. ASPREN, VicSPIN laboratory detection of influenza and other respiratory viruses for 2021 #