

NATIONAL PRIMARY CARE INFECTIOUS DISEASES SENTINEL SURVEILLANCE FORTNIGHTLY REPORT

Combining data from The Australian Sentinel Practices Research Network (ASPREN)*
and the Victorian Sentinel Practitioners Influenza Network (VicSPIN)*

No. 14, 2021 - 5th July — 18th July 2021

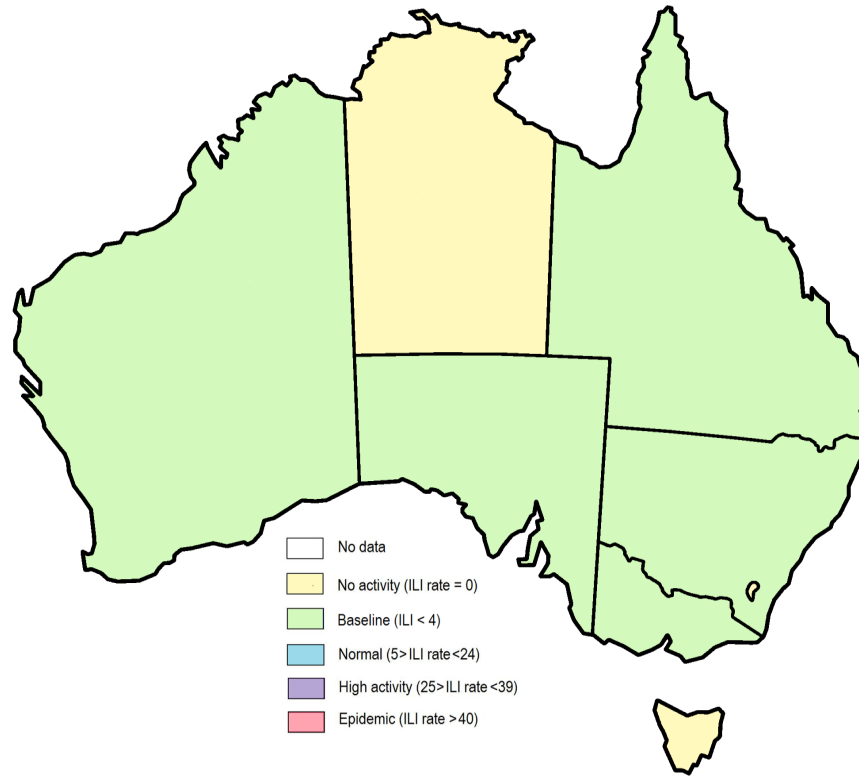


Figure 1. Map of ILI activity by jurisdiction, weeks 27 - 28, 2021.

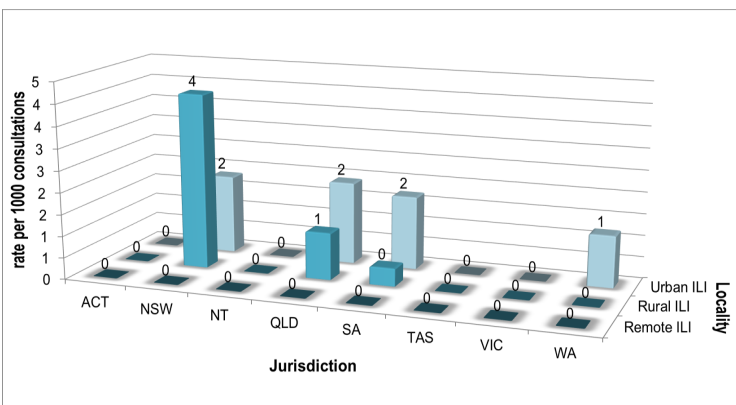


Figure 2. ASPREN + VicSPIN rate of ILI by locality and jurisdiction, weeks 27 - 28, 2021.

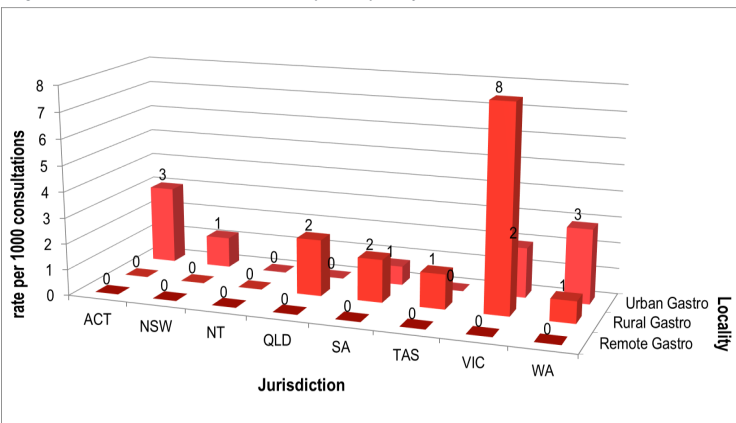



Figure 3. ASPREN rate of gastroenteritis by locality and jurisdiction, weeks 27 - 28, 2021.


NATIONAL SUMMARY

 Influenza-like-illness levels remain steady below baseline levels

0 Case of influenza have been detected in this reporting period
0 x Influenza A
0 x Influenza B

0% Influenza positivity during the reporting period.

0 Cases of influenza have been detected this year:
0 x Influenza A
0 x Influenza B

 Gastroenteritis levels remain steady below baseline levels

SYNDROMIC SURVEILLANCE REPORTING

Reports were received from 243 reporters from 8 states and territories during the reporting period. During weeks 27 and 28 reporters saw a total of 43,003 patients.

INFLUENZA-LIKE-ILLNESS (ILI)

Nationally, ILI notifications significantly decreased during the period with 58 notifications being reported in weeks 27—28. ILI rates reported in this period were 2 and 1 cases per 1000 consultations (weighted) respectively. This was a slight decrease from the previous fortnight where rates were 2 cases per 1000 consultations in weeks 25 and 26. For the same reporting period in 2020, ILI rates were slightly lower at 1 and 2 cases per 1000 consultations for weeks 27 and 28 respectively (see Fig. 5).

GASTROENTERITIS

Nationally, gastroenteritis notifications were lower over the period with 54 notifications reported. Gastroenteritis rates reported in this period slightly decreased to 2 and 1 cases per 1000 consultations in both weeks 27 and 28 respectively, compared to 2 cases per 1000 consultations in weeks 25 and 26 (see Fig. 5).

* ASPREN is funded by the Commonwealth's Department of Health, Office of Health Protection, Vaccine Preventable Disease Surveillance Section.

* VicSPIN is funded by Melbourne Health and the Victorian Infectious Diseases Reference Laboratory.

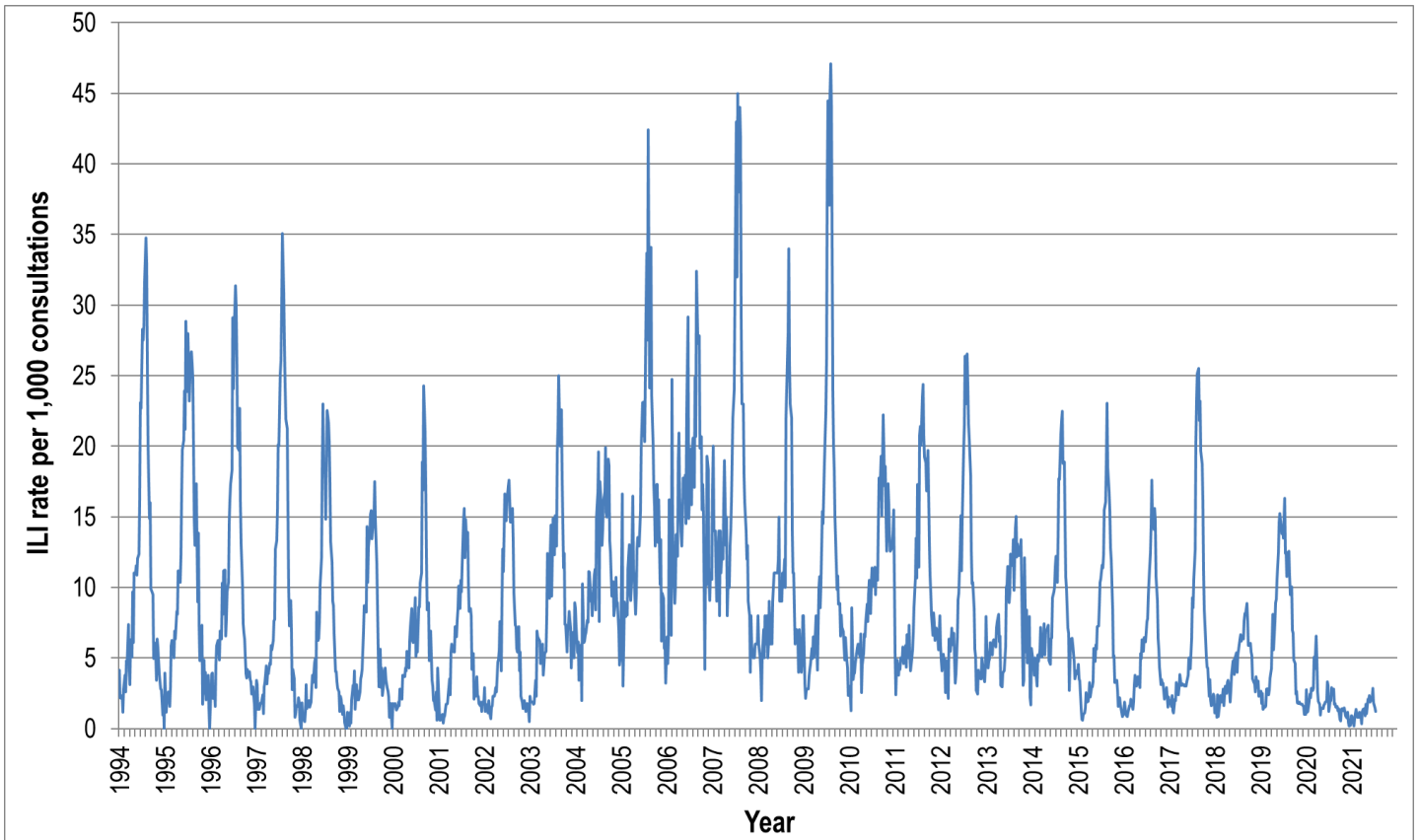


Figure 4. ASPREN ILI rates 1994 - 2021.

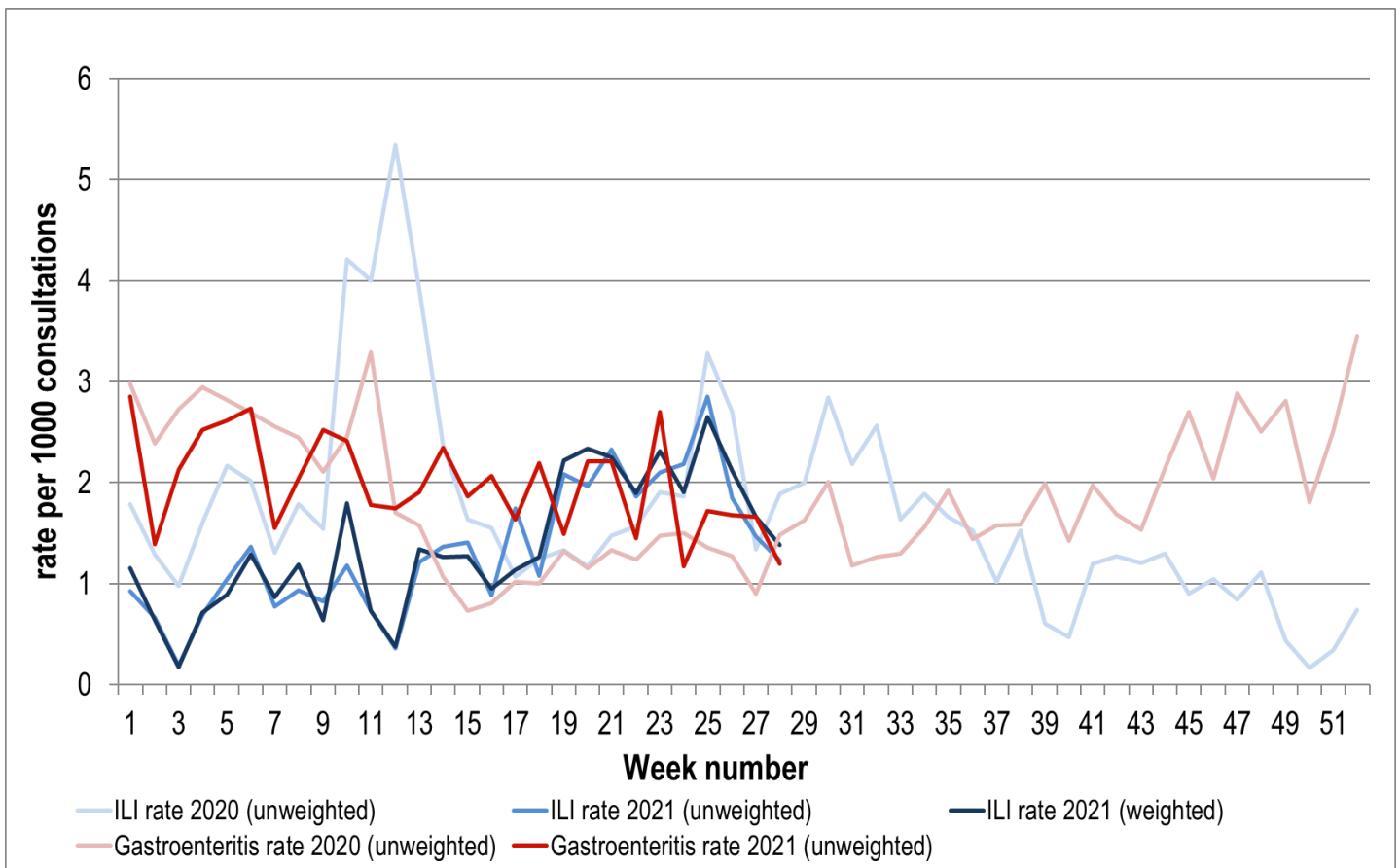


Figure 5. ASPREN + VicSPIN ILI and ASPREN gastroenteritis rates 2020-21. Weighted rates are weighted to account for population size differences between jurisdictions, using population estimates from the 2011 Australian Census.

VIROLOGICAL SURVEILLANCE

45% of all ILI patients were swab tested during weeks 27 and 28 (see Figure 6).

No cases of Influenza were detected during this period. There were 8 cases of Parainfluenza virus detected making it the most common respiratory virus circulating the nation at present (see figure 8).

Viral laboratory data are provided by SA Pathology and VicSPIN laboratories.

	Reporting Period 5 July - 18 July 2021	YTD 01 Jan - 18 July 2021
Total number of ILI notifications	58	762
Number of swab tests performed	26	319
% ILI patients tested	45%	42%
% of swab tests positive for influenza	0%	0%

Figure 6. ASPREN + VicSPIN virological surveillance results overview for 2021 #

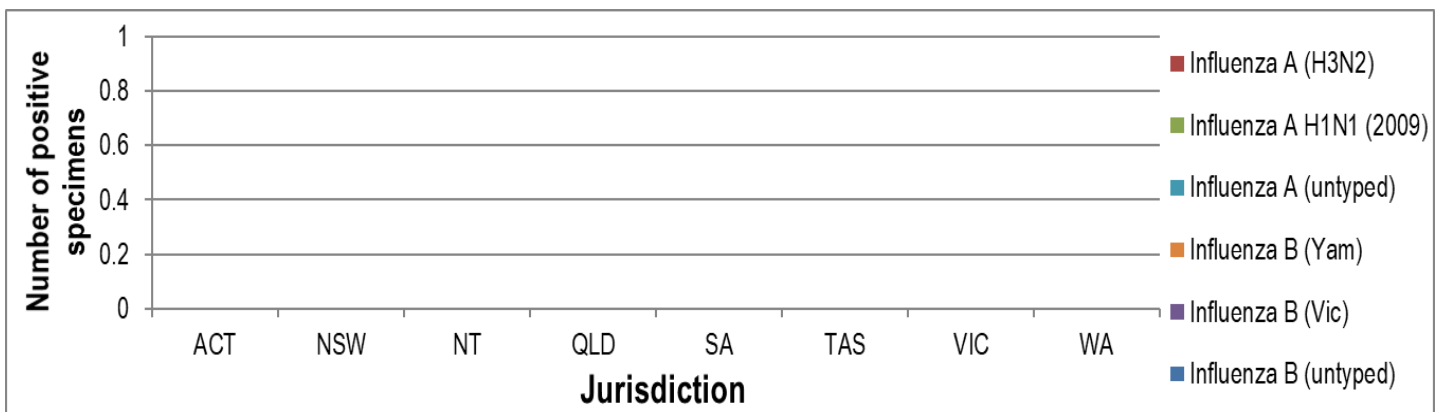


Figure 7. ASPREN + VicSPIN influenza subtype analysis by jurisdiction for 2021 #

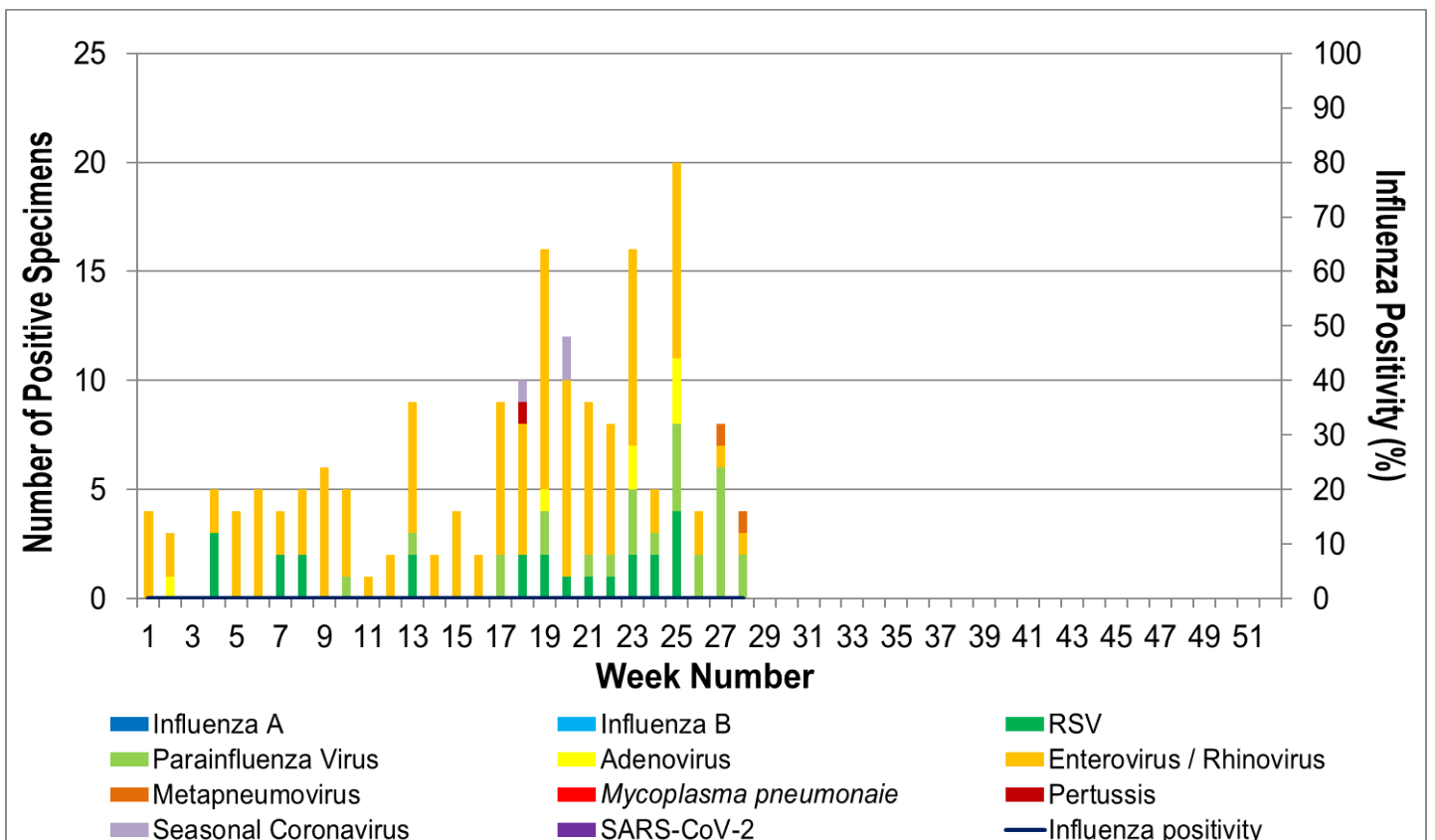


Figure 8. ASPREN, VicSPIN laboratory detection of influenza and other respiratory viruses for 2021 #

The Australian Sentinel Practices Research Network is supported by the Australian Government Department of Health (the Department). The opinions expressed in this paper are those of the authors, and do not necessarily represent the views of the Department.

Please note: This report is based on data available as at 29 July 2021. Delays in the reporting of data may cause data to change retrospectively.