


**NATIONAL PRIMARY CARE INFECTIOUS DISEASES
SENTINEL SURVEILLANCE FORTNIGHTLY REPORT**

Combining data from The Australian Sentinel Practices Research Network (ASPREN)*
and the Victorian Sentinel Practitioners Influenza Network (VicSPIN)*

No. 13, 2021 - 21st June — 4th July 2021


NATIONAL SUMMARY

 Influenza-like-illness levels remain steady below baseline levels

0 Case of influenza have been detected in this reporting period
0 x Influenza A
0 x Influenza B

0% Influenza positivity during the reporting period.

0 Cases of influenza have been detected this year:
0 x Influenza A
0 x Influenza B

 Gastroenteritis levels remain steady below baseline levels

**SYNDROMIC SURVEILLANCE
REPORTING**

Reports were received from 252 reporters from 8 states and territories during the reporting period. During weeks 25 and 26 reporters saw a total of 44,306 patients.

INFLUENZA-LIKE-ILLNESS (ILI)

Nationally, ILI notifications increased during the period with 104 notifications being reported in weeks 25–26. ILI rates reported in this period slightly increased to 3 and 2 cases per 1000 consultations (weighted) respectively. This was similar to the previous fortnight where rates were 2 cases per 1000 consultations in weeks 23 and 24. For the same reporting period in 2020, ILI rates were slightly higher at 3 cases per 1000 consultations for weeks 25 and 26 (see Fig. 5).

GASTROENTERITIS

Nationally, gastroenteritis notifications were slightly lower over the period with 68 notifications reported. Gastroenteritis rates reported in this period slightly decreased to 2 cases per 1000 consultations in both weeks 25 and 26 respectively, compared to 3 and 1 cases per 1000 consultations in weeks 23 and 24 respectively (see Fig. 5).

* ASPREN is funded by the Commonwealth's Department of Health, Office of Health Protection, Vaccine Preventable Disease Surveillance Section.

* VicSPIN is funded by Melbourne Health and the Victorian Infectious Diseases Reference Laboratory.

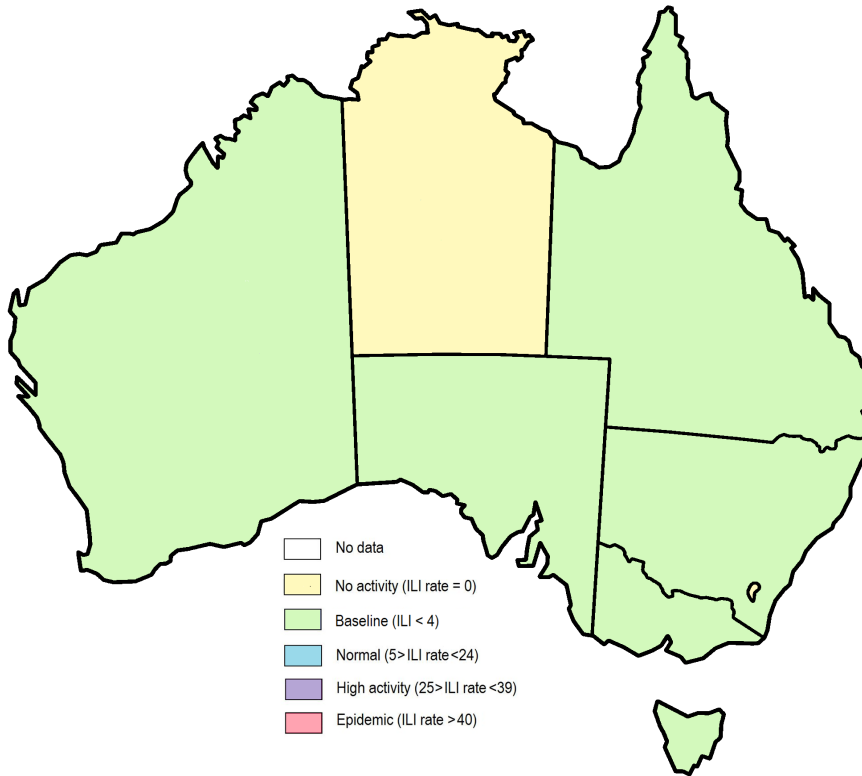


Figure 1. Map of ILI activity by jurisdiction, weeks 25 - 26, 2021.

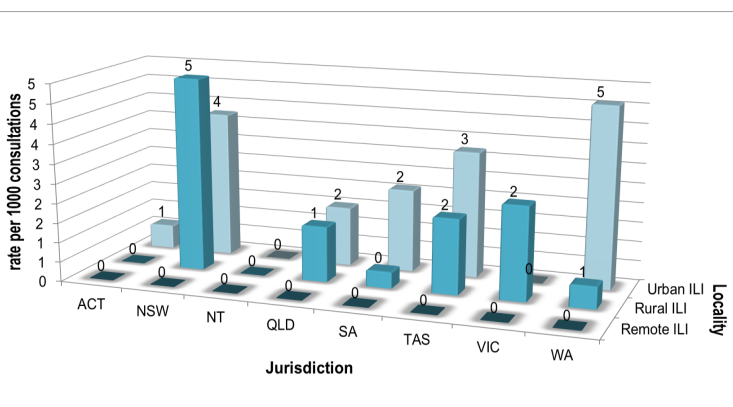


Figure 2. ASPREN + VicSPIN rate of ILI by locality and jurisdiction, weeks 25 - 26, 2021.

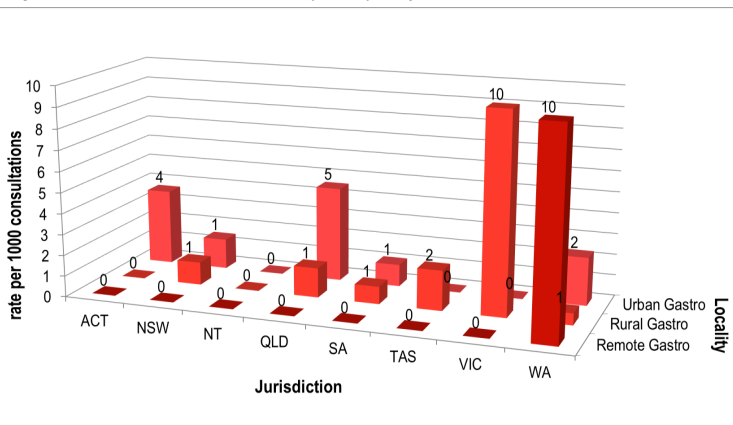


Figure 3. ASPREN rate of gastroenteritis by locality and jurisdiction, weeks 25 - 26, 2021.

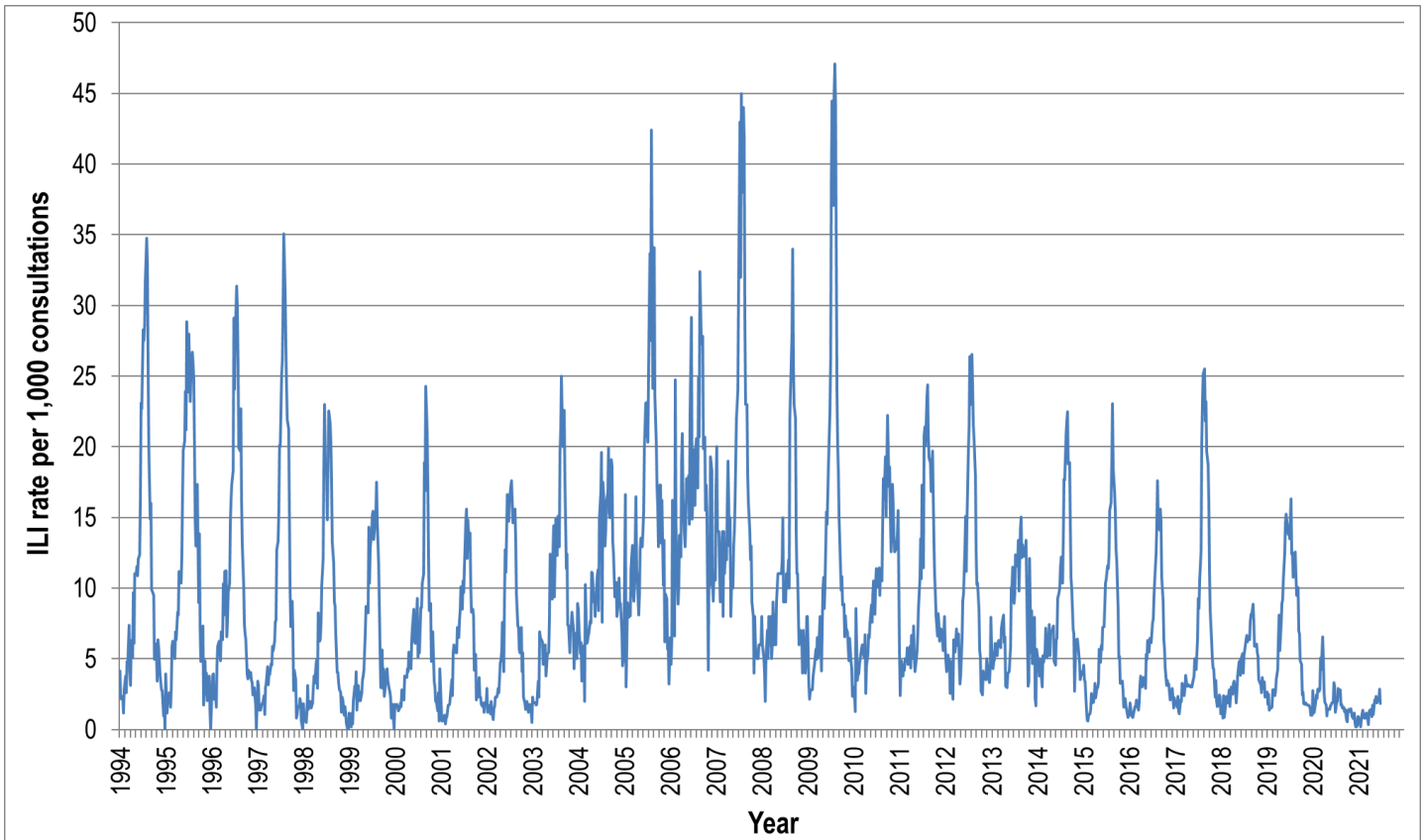


Figure 4. ASPREN ILI rates 1994 - 2021.

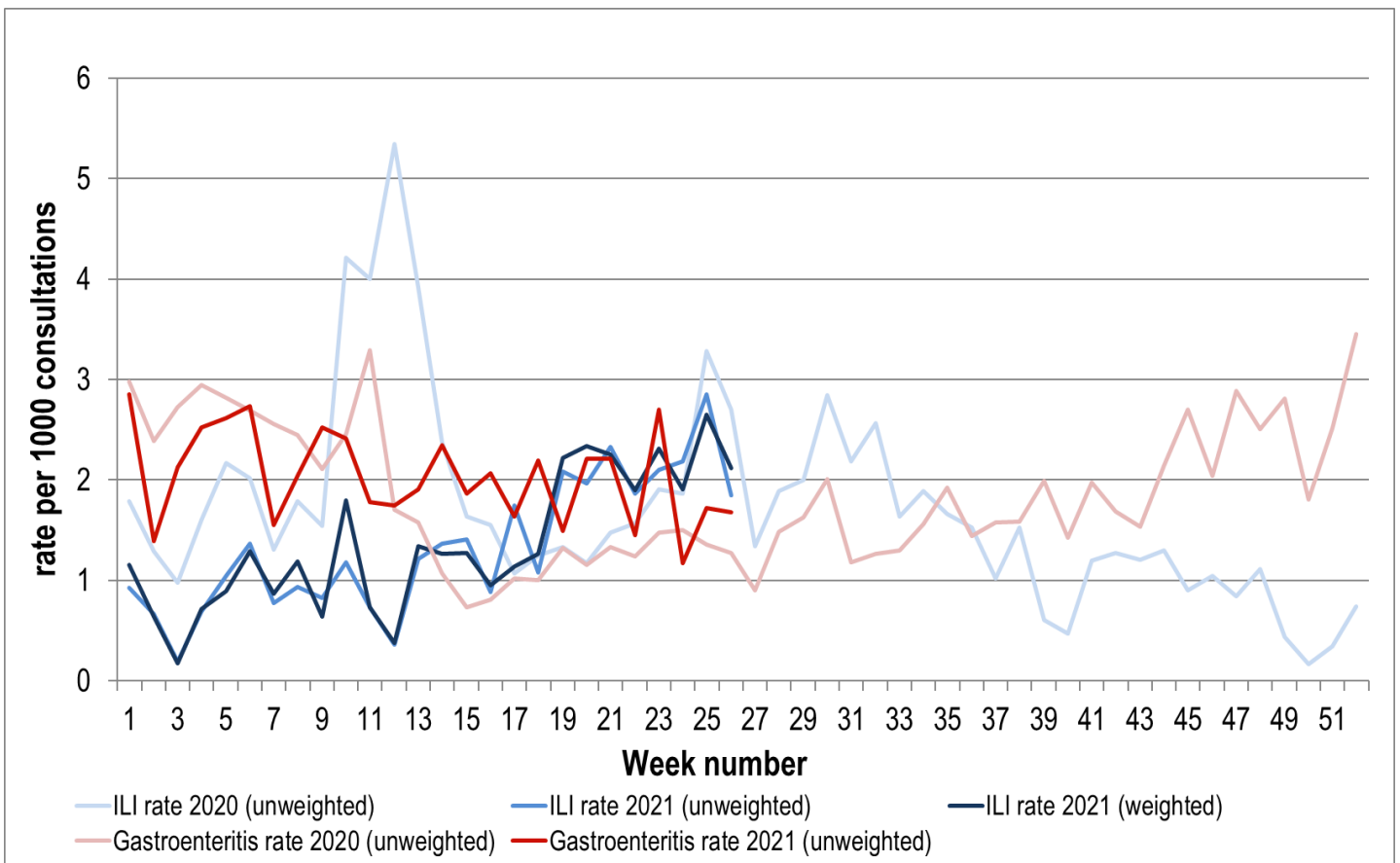


Figure 5. ASPREN + VicSPIN ILI and ASPREN gastroenteritis rates 2020-21. Weighted rates are weighted to account for population size differences between jurisdictions, using population estimates from the 2011 Australian Census.

VIROLOGICAL SURVEILLANCE

36% of all ILI patients were swab tested during weeks 25 and 26 (see Figure 6).

No cases of Influenza were detected during this period. There were 11 cases of Rhinovirus detected making it the most common respiratory virus circulating the nation at present (see figure 8).

Viral laboratory data are provided by SA Pathology and VicSPIN laboratories.

	Reporting Period 21 June - 4 July 2021	YTD 01 Jan - 4 July 2021
Total number of ILI notifications	104	704
Number of swab tests performed	37	293
% ILI patients tested	36%	42%
% of swab tests positive for influenza	0%	0%

Figure 6. ASPREN + VicSPIN virological surveillance results overview for 2021 #

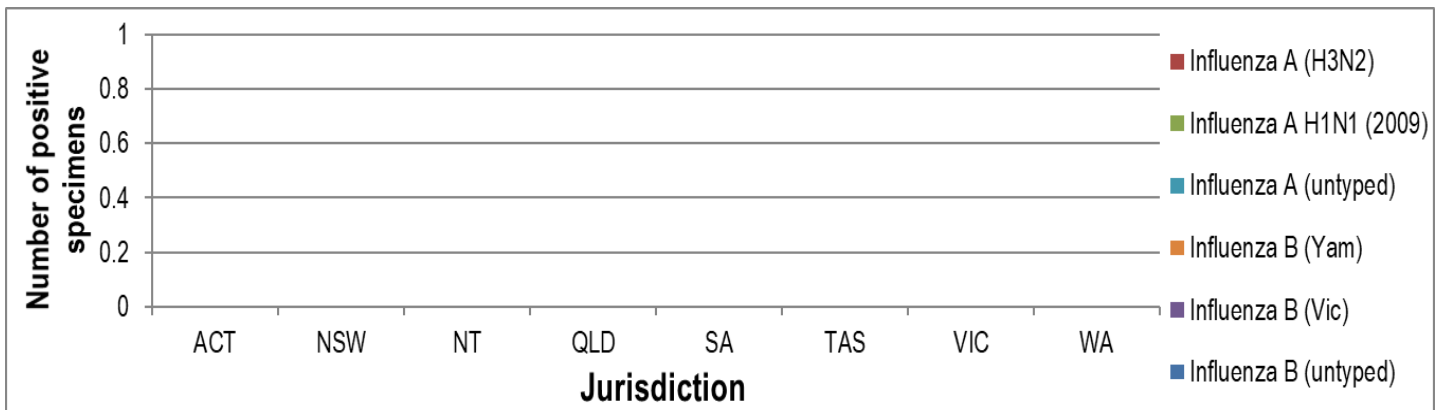


Figure 7. ASPREN + VicSPIN influenza subtype analysis by jurisdiction for 2021 #

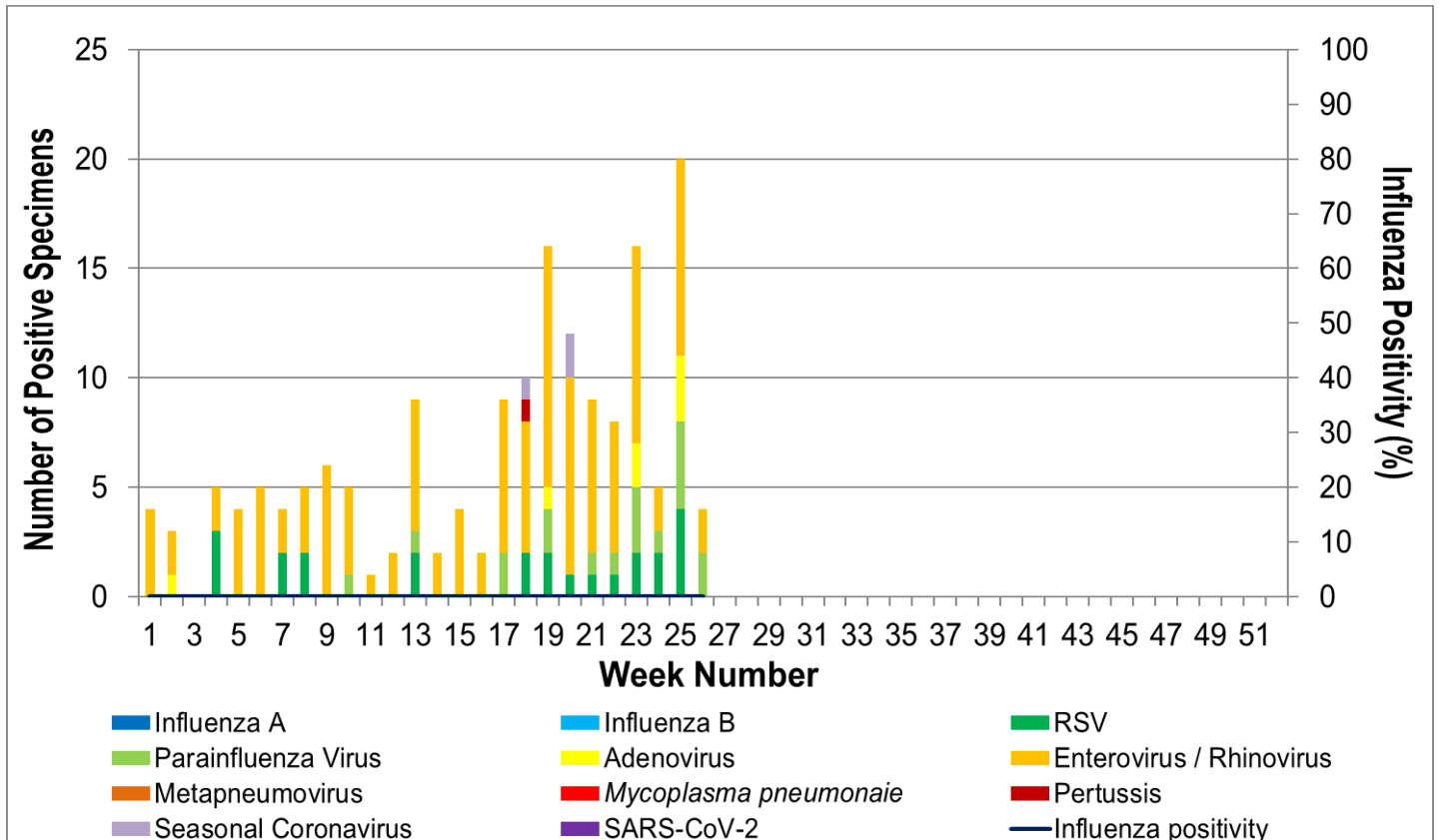


Figure 8. ASPREN, VicSPIN laboratory detection of influenza and other respiratory viruses for 2021 #