

**NATIONAL PRIMARY CARE INFECTIOUS DISEASES
SENTINEL SURVEILLANCE FORTNIGHTLY REPORT**

Combining data from The Australian Sentinel Practices Research Network (ASPREN)*
and the Victorian Sentinel Practitioners Influenza Network (VicSPIN)*

No. 10, 2021 - 10th May — 23rd May 2021

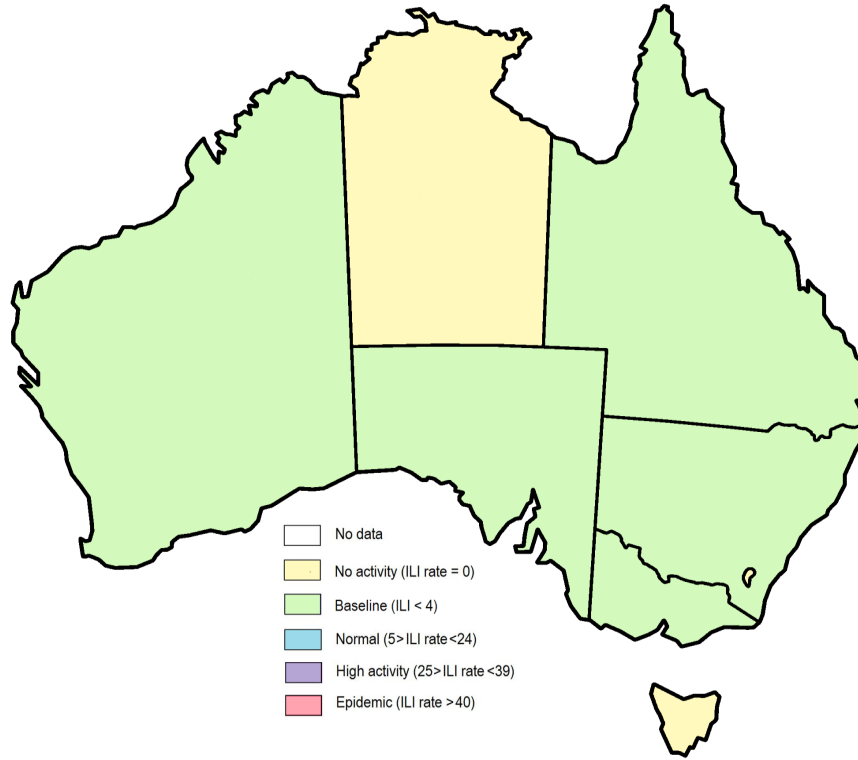


Figure 1. Map of ILI activity by jurisdiction, weeks 19 - 20, 2021.

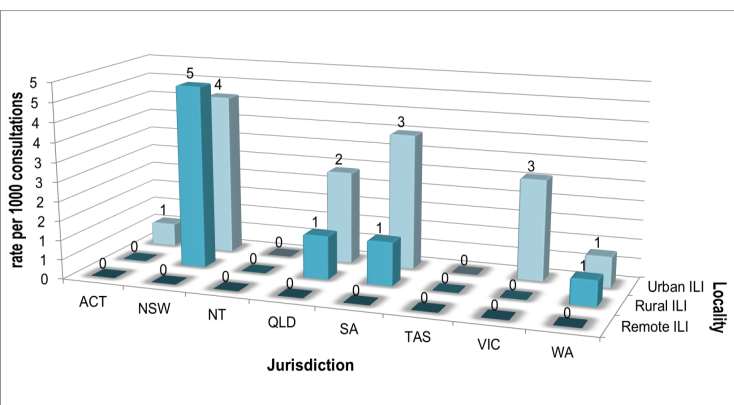


Figure 2. ASPREN + VicSPIN rate of ILI by locality and jurisdiction, weeks 19 - 20, 2021.

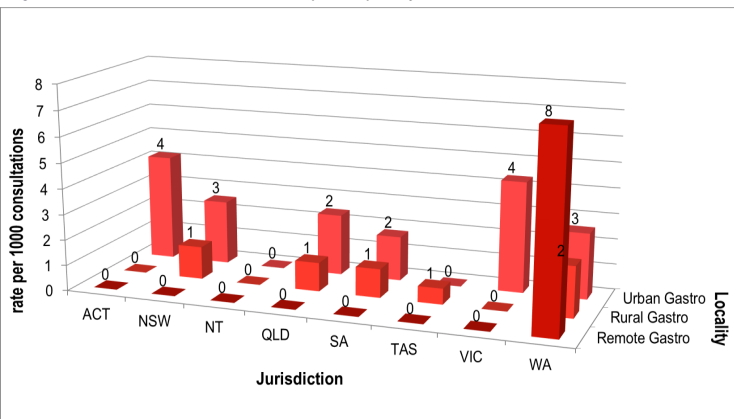



Figure 3. ASPREN rate of gastroenteritis by locality and jurisdiction, weeks 19 - 20, 2021.


NATIONAL SUMMARY

 Influenza-like-illness levels remain steady below baseline levels

0 Case of influenza have been detected in this reporting period
0 x Influenza A
0 x Influenza B

0% Influenza positivity during the reporting period.

0 Cases of influenza have been detected this year:
0 x Influenza A
0 x Influenza B

 Gastroenteritis levels remain steady below baseline levels

**SYNDROMIC SURVEILLANCE
REPORTING**

Reports were received from 243 reporters from 8 states and territories during the reporting period. During weeks 19 and 20 reporters saw a total of 45,226 patients.

INFLUENZA-LIKE-ILLNESS (ILI)

Nationally, ILI notifications significantly increased during the period with 93 notifications being reported in weeks 19—20. ILI rates reported in this period increased to 2 cases per 1000 consultations (weighted). This was slightly higher than the previous fortnight where rates were 1 case per 1000 consultations in weeks 17 and 18. For the same reporting period in 2020, ILI rates were slightly lower at 1 case per 1000 consultations for weeks 19 and 20 (see Fig. 5).

GASTROENTERITIS

Nationally, gastroenteritis notifications remained steady over the period with 77 notifications reported. Gastroenteritis rates reported in this period remained steady at 2 cases per 1000 consultations in both weeks 19 and 20, compared to 2 cases per 1000 consultations in weeks 17 and 18 (see Fig. 5).

* ASPREN is funded by the Commonwealth's Department of Health, Office of Health Protection, Vaccinable Preventable Disease Surveillance Section.

* VicSPIN is funded by Melbourne Health and the Victorian Infectious Diseases Reference Laboratory.

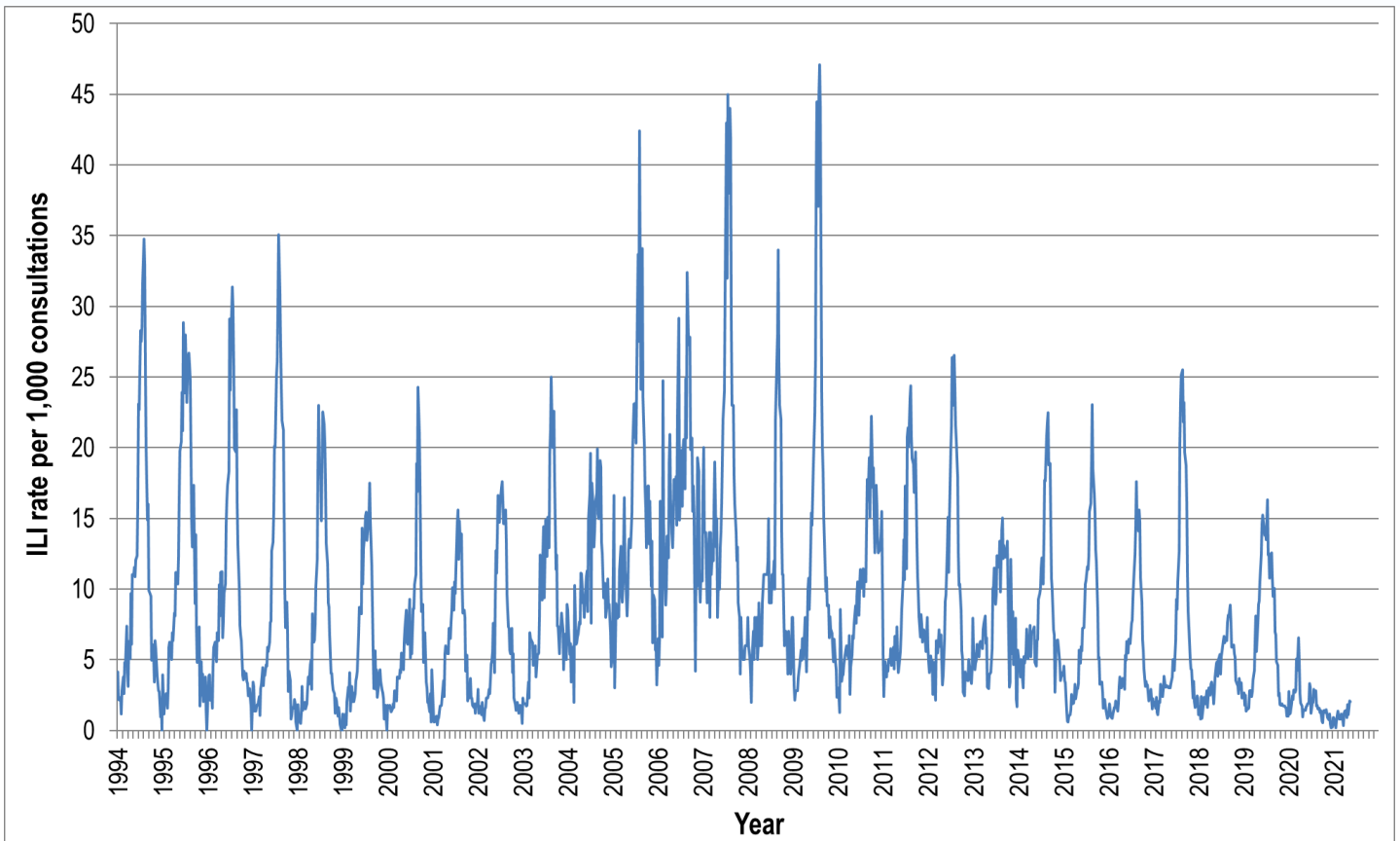


Figure 4. ASPREN ILI rates 1994 - 2021.

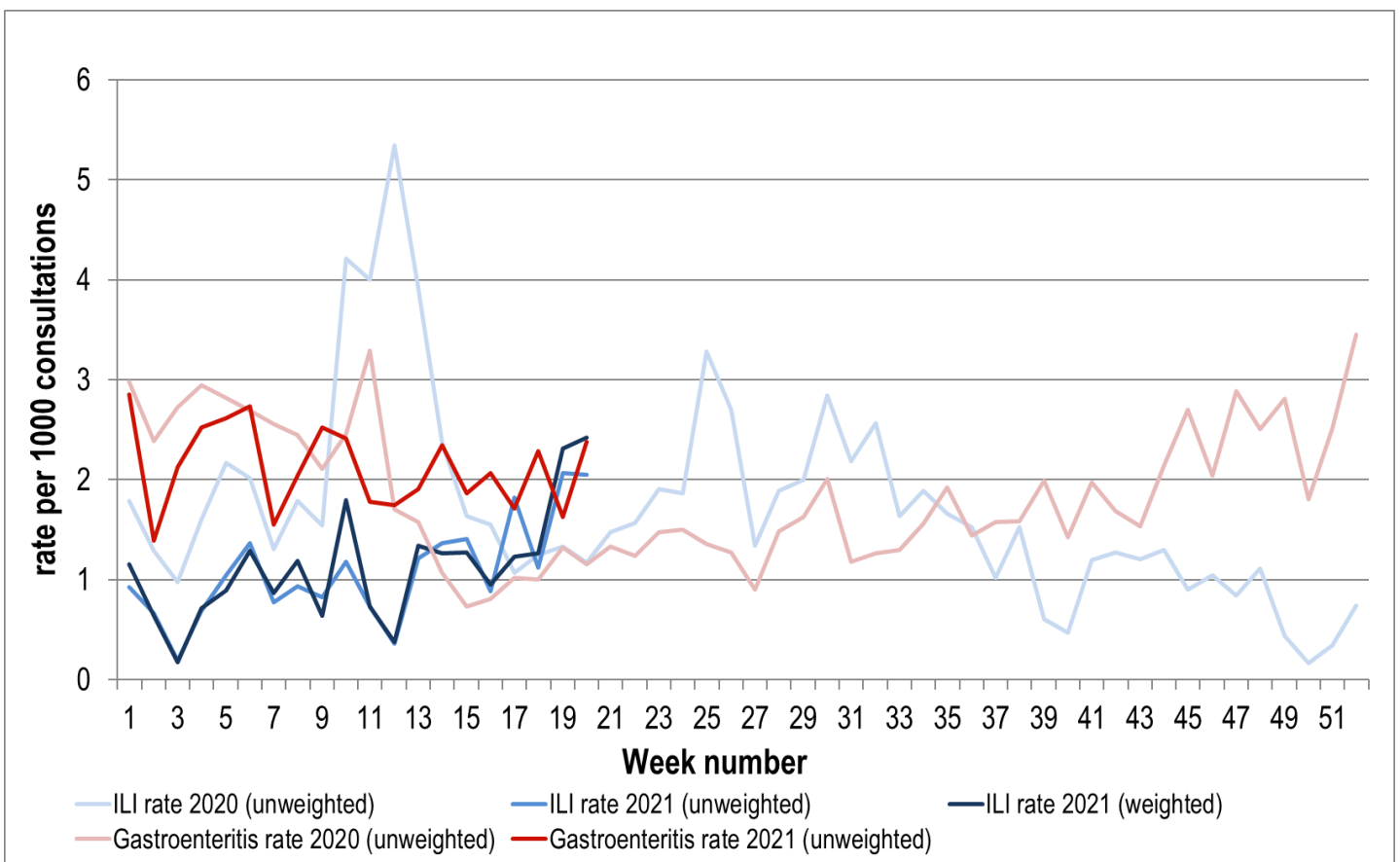


Figure 5. ASPREN + VicSPIN ILI and ASPREN gastroenteritis rates 2020-21. Weighted rates are weighted to account for population size differences between jurisdictions, using population estimates from the 2011 Australian Census.

VIROLOGICAL SURVEILLANCE

44% of all ILI patients were swab tested during weeks 19 and 20 (see Figure 6).

No cases of Influenza were detected during this period. There were 20 cases of Rhinovirus detected making it the most common respiratory virus circulating the nation at present (see figure 8).

Viral laboratory data are provided by SA Pathology and VicSPIN laboratories.

	Reporting Period 10 May - 23 May 2021	YTD 01 Jan - 23 May 2021
Total number of ILI notifications	93	394
Number of swab tests performed	41	166
% ILI patients tested	44%	42%
% of swab tests positive for influenza	0%	0%

Figure 6. ASPREN + VicSPIN virological surveillance results overview for 2021 #

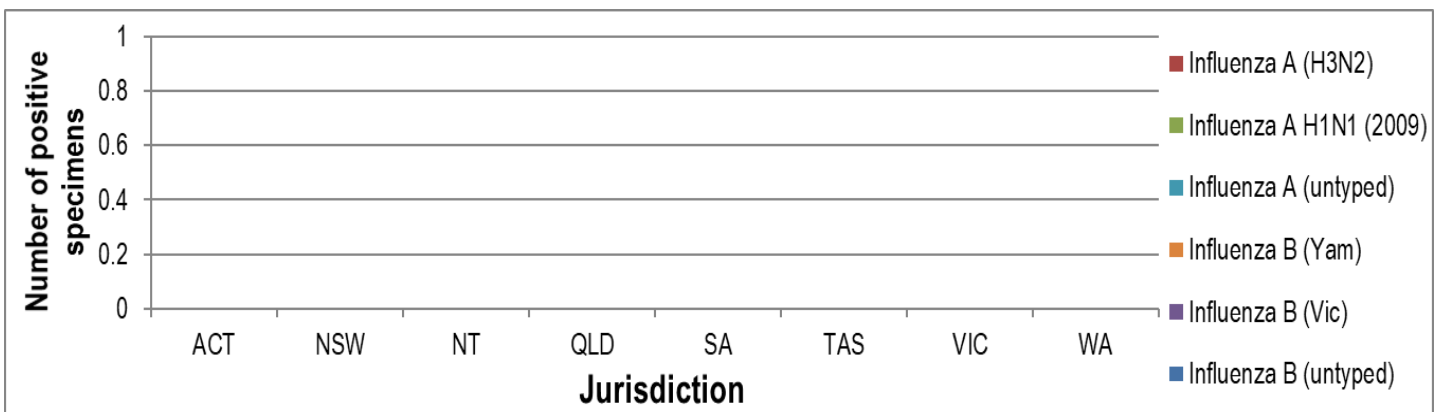


Figure 7. ASPREN + VicSPIN influenza subtype analysis by jurisdiction for 2021 #

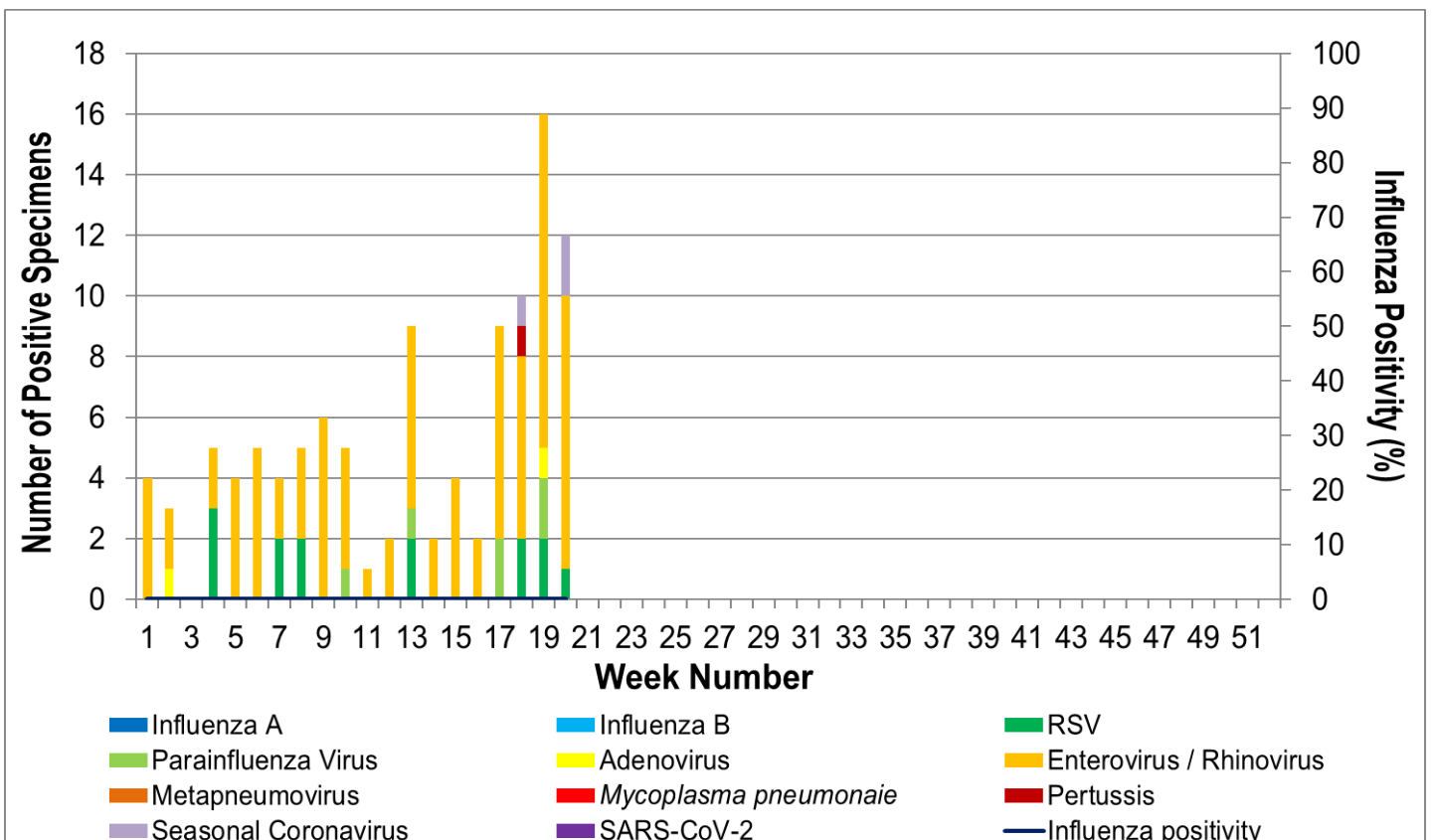


Figure 8. ASPREN, VicSPIN laboratory detection of influenza and other respiratory viruses for 2021 #