

**NATIONAL PRIMARY CARE INFECTIOUS DISEASES
SENTINEL SURVEILLANCE FORTNIGHTLY REPORT**

Combining data from The Australian Sentinel Practices Research Network (ASPREN)*
and the Victorian Sentinel Practitioners Influenza Network (VicSPIN)*

No. 09, 2021 - 26th April — 9th May 2021

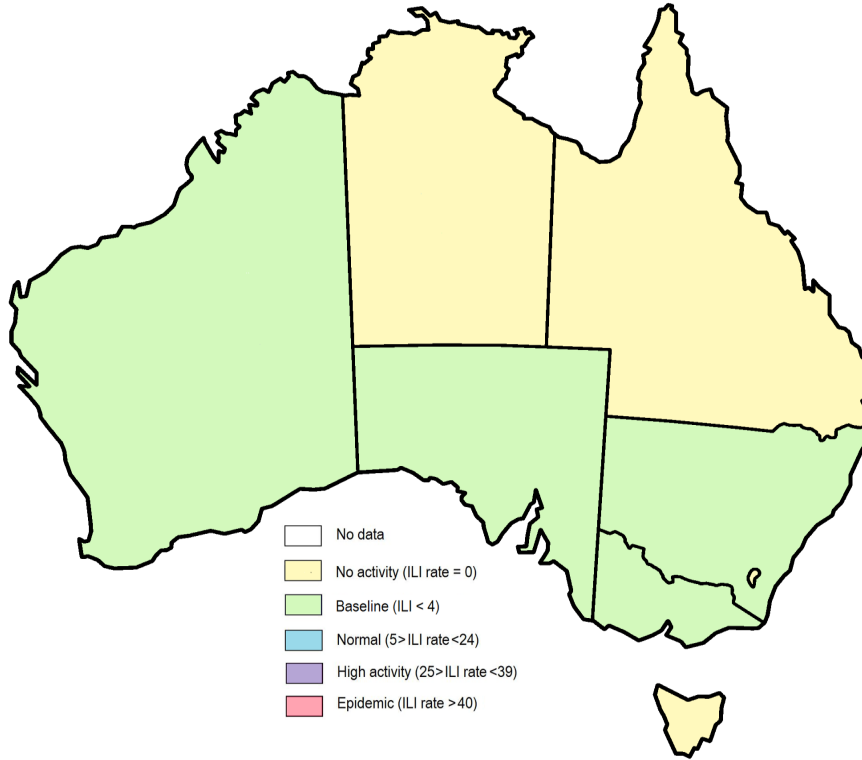


Figure 1. Map of ILI activity by jurisdiction, weeks 17 - 18, 2021.

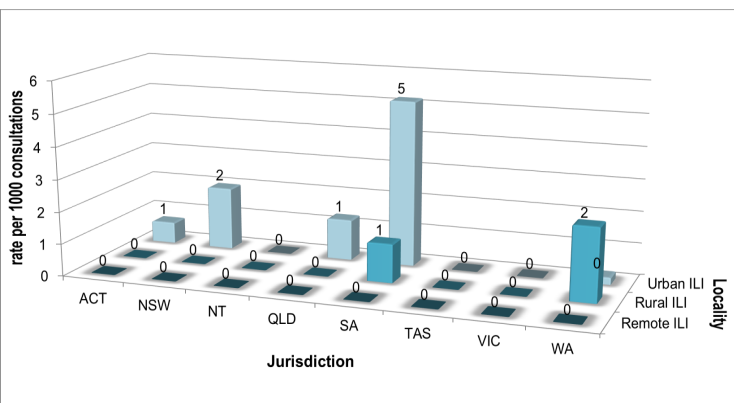


Figure 2. ASPREN + VicSPIN rate of ILI by locality and jurisdiction, weeks 17 - 18, 2021.

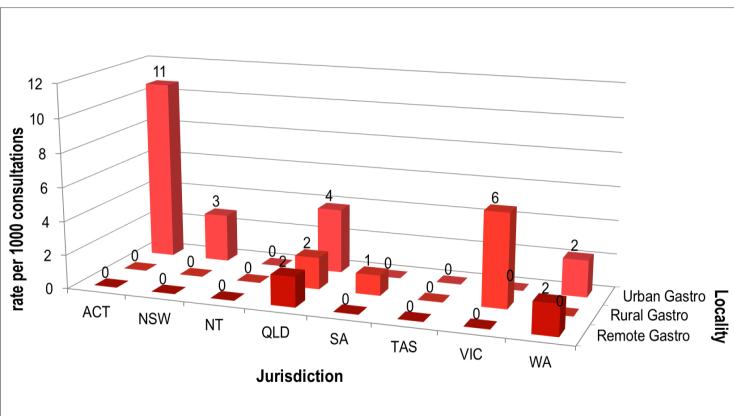



Figure 3. ASPREN rate of gastroenteritis by locality and jurisdiction, weeks 17 - 18, 2021.


NATIONAL SUMMARY

 Influenza-like-illness levels remain steady below baseline levels

0 Case of influenza have been detected in this reporting period
0 x Influenza A
0 x Influenza B

0% Influenza positivity during the reporting period.

0 Cases of influenza have been detected this year:
0 x Influenza A
0 x Influenza B

 Gastroenteritis levels remain steady below baseline levels

**SYNDROMIC SURVEILLANCE
REPORTING**

Reports were received from 243 reporters from 8 states and territories during the reporting period. During weeks 17 and 18 reporters saw a total of 40,452 patients.

INFLUENZA-LIKE-ILLNESS (ILI)

Nationally, ILI notifications increased during the period with 58 notifications being reported in weeks 17–18. ILI rates reported in this period remained steady at 1 case per 1000 consultations (weighted). This was similar to the previous fortnight where rates were 1 case per 1000 consultations in weeks 15 and 16. For the same reporting period in 2020, ILI rates were similar at 1 cases per 1000 consultations for weeks 17 and 18 (see Fig. 5).

GASTROENTERITIS

Nationally, gastroenteritis notifications remained steady over the period with 75 notifications reported. Gastroenteritis rates reported in this period remained steady at 2 cases per 1000 consultations in both weeks 17 and 18, compared to 2 cases per 1000 consultations in weeks 15 and 16 (see Fig. 5) respectively.

* ASPREN is funded by the Commonwealth's Department of Health, Office of Health Protection, Vaccine Preventable Disease Surveillance Section.

* VicSPIN is funded by Melbourne Health and the Victorian Infectious Diseases Reference Laboratory.

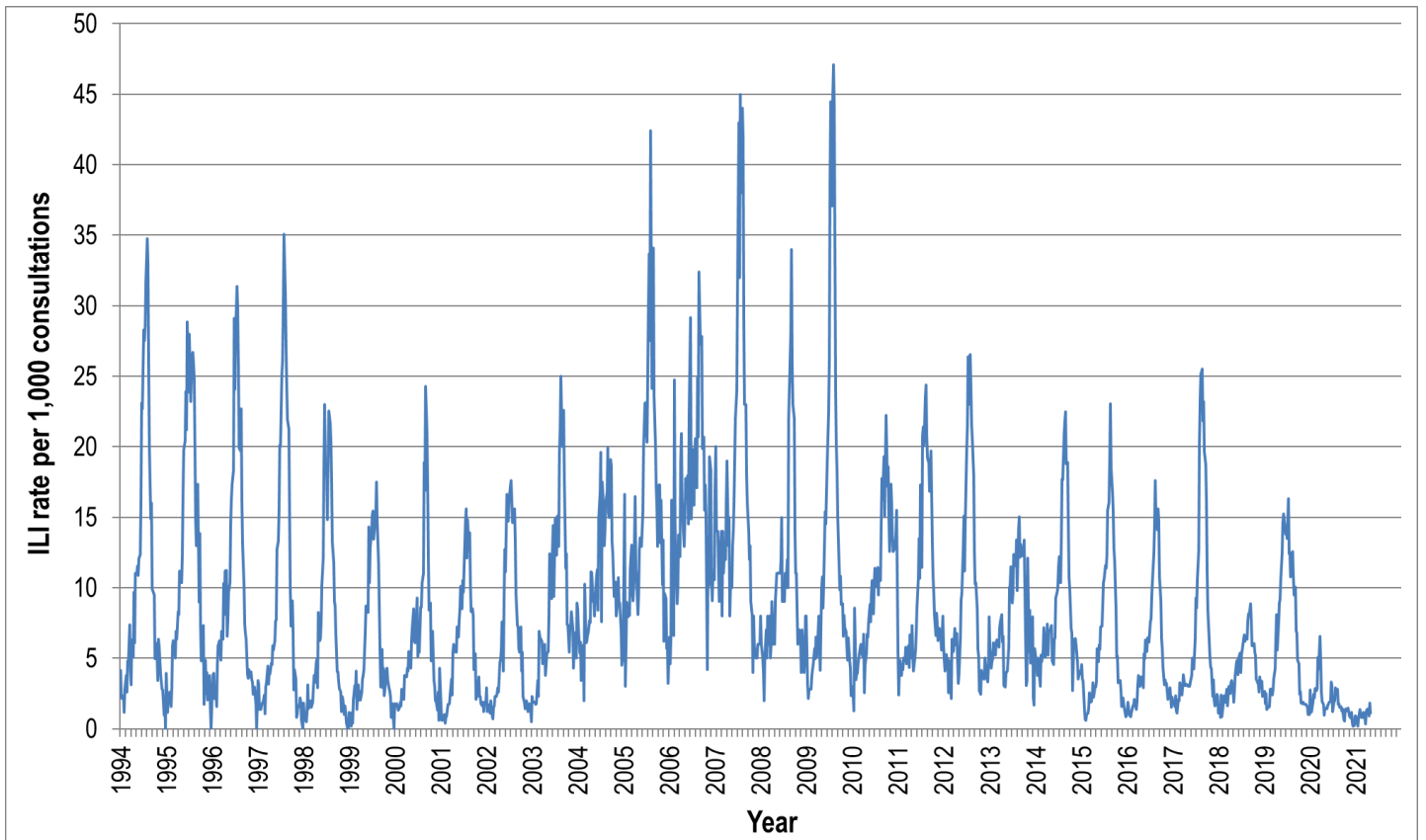


Figure 4. ASPREN ILI rates 1994 - 2021.

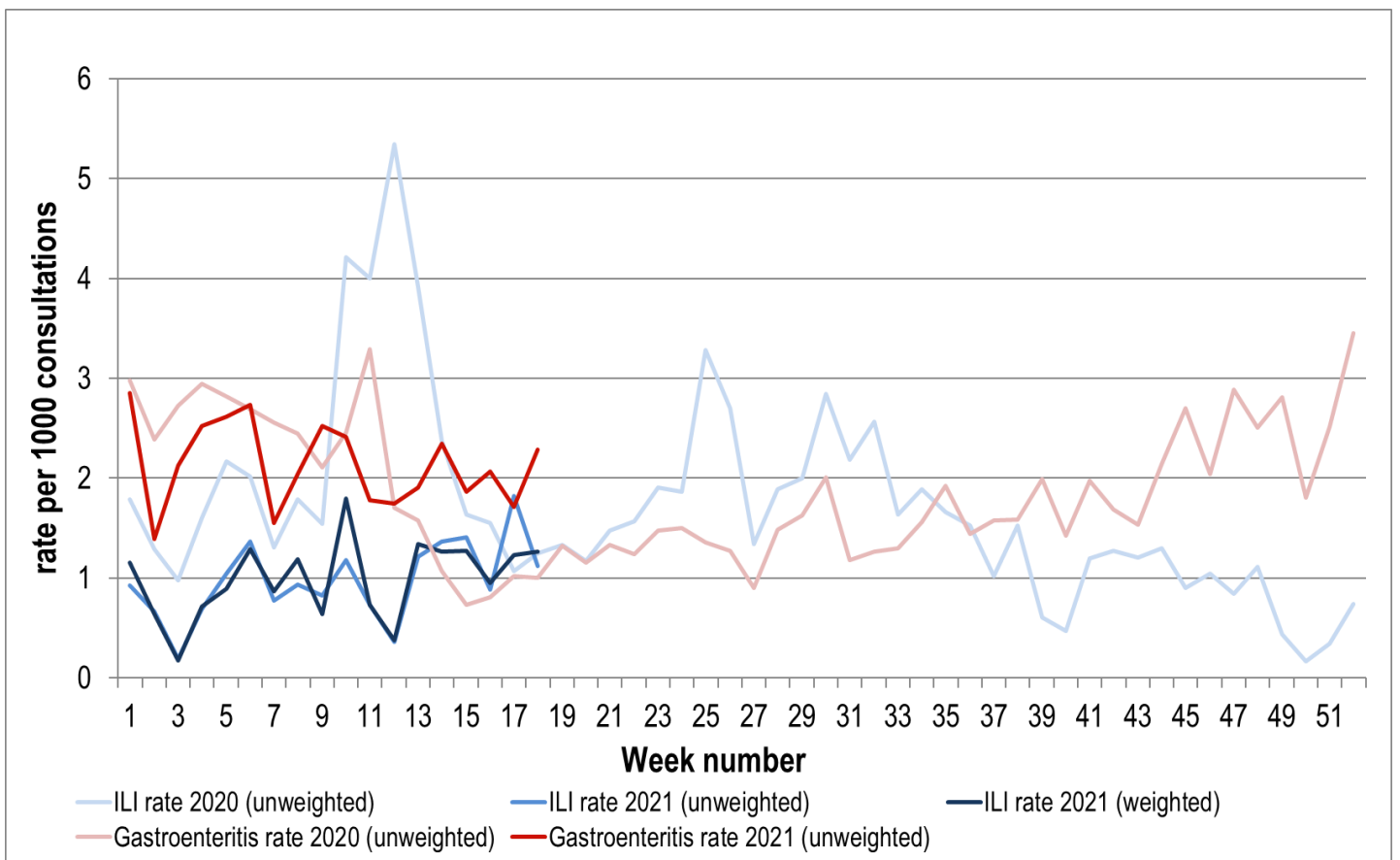


Figure 5. ASPREN + VicSPIN ILI and ASPREN gastroenteritis rates 2020-21. Weighted rates are weighted to account for population size differences between jurisdictions, using population estimates from the 2011 Australian Census.

VIROLOGICAL SURVEILLANCE

47% of all ILI patients were swab tested during weeks 17 and 18 (see Figure 6).

No cases of Influenza were detected during this period. There were 12 cases of Rhinovirus detected making it the most common respiratory virus circulating the nation at present (see figure 8).

Viral laboratory data are provided by SA Pathology and VicSPIN laboratories.

| | Reporting Period 26 April - 9 May 2021 | YTD 01 Jan - 9 May 2021 |
|--|---|----------------------------|
| Total number of ILI notifications | 58 | 301 |
| Number of swab tests performed | 27 | 121 |
| % ILI patients tested | 47% | 40% |
| % of swab tests positive for influenza | 0% | 0% |

Figure 6. ASPREN + VicSPIN virological surveillance results overview for 2021 #

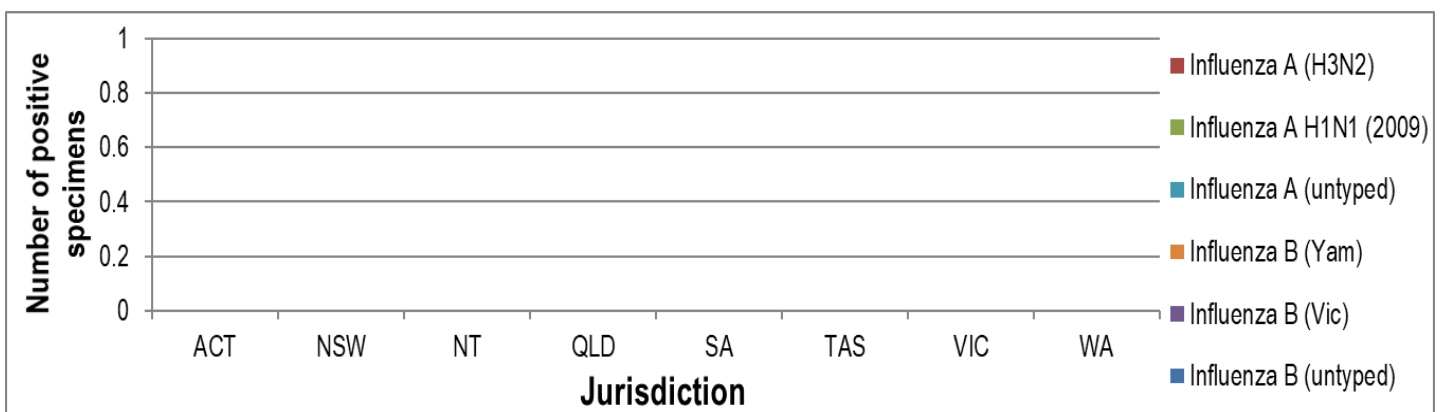


Figure 7. ASPREN + VicSPIN influenza subtype analysis by jurisdiction for 2021 #

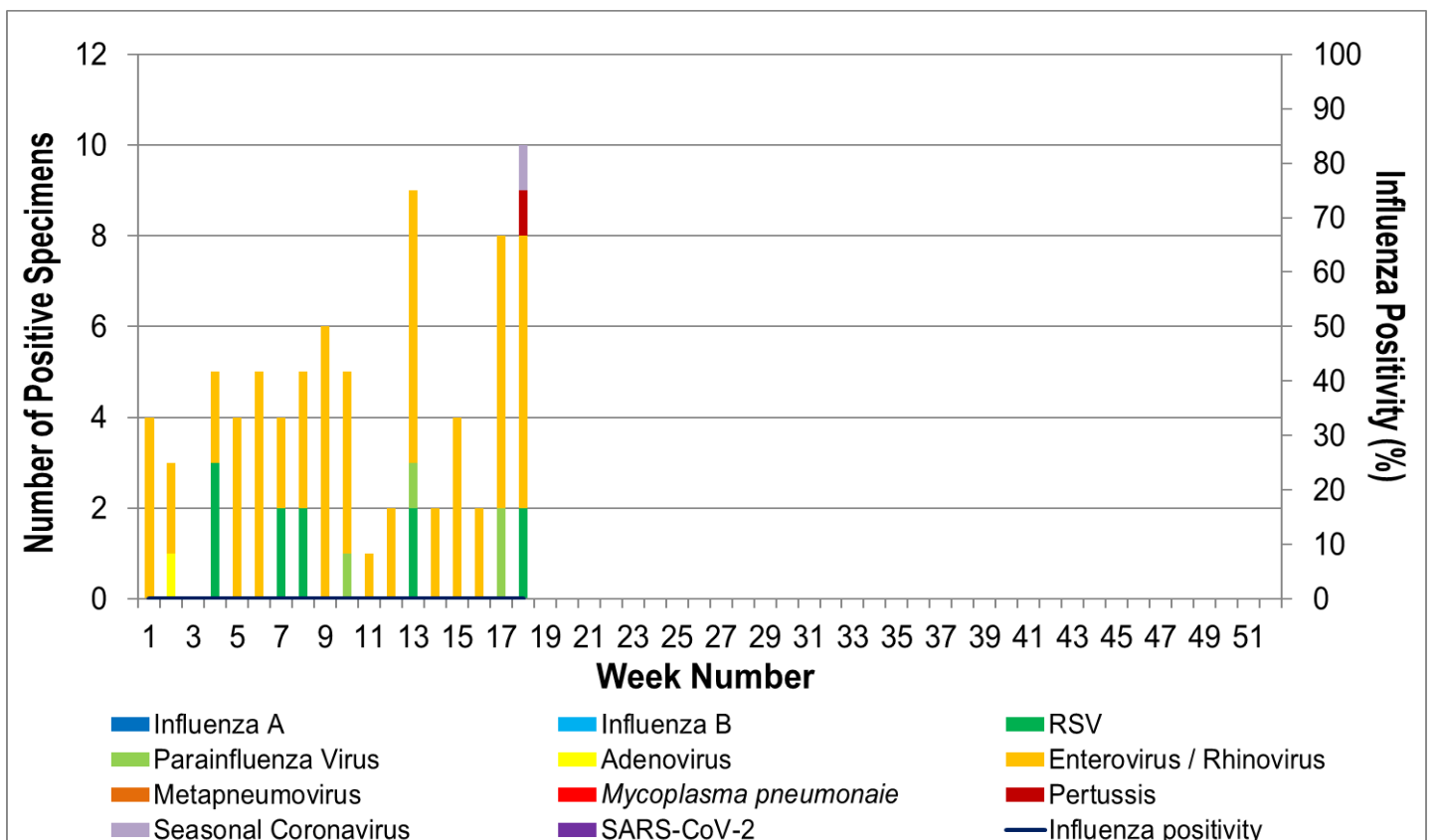


Figure 8. ASPREN, VicSPIN laboratory detection of influenza and other respiratory viruses for 2021 #

The Australian Sentinel Practices Research Network is supported by the Australian Government Department of Health (the Department). The opinions expressed in this paper are those of the authors, and do not necessarily represent the views of the Department.

Please note: This report is based on data available as at 20 May 2021. Delays in the reporting of data may cause data to change retrospectively.