

**NATIONAL PRIMARY CARE INFECTIOUS DISEASES
SENTINEL SURVEILLANCE FORTNIGHTLY REPORT**

Combining data from The Australian Sentinel Practices Research Network (ASPREN)*
and the Victorian Sentinel Practitioners Influenza Network (VicSPIN)*

No. 08, 2021 - 12th April — 25th April 2021

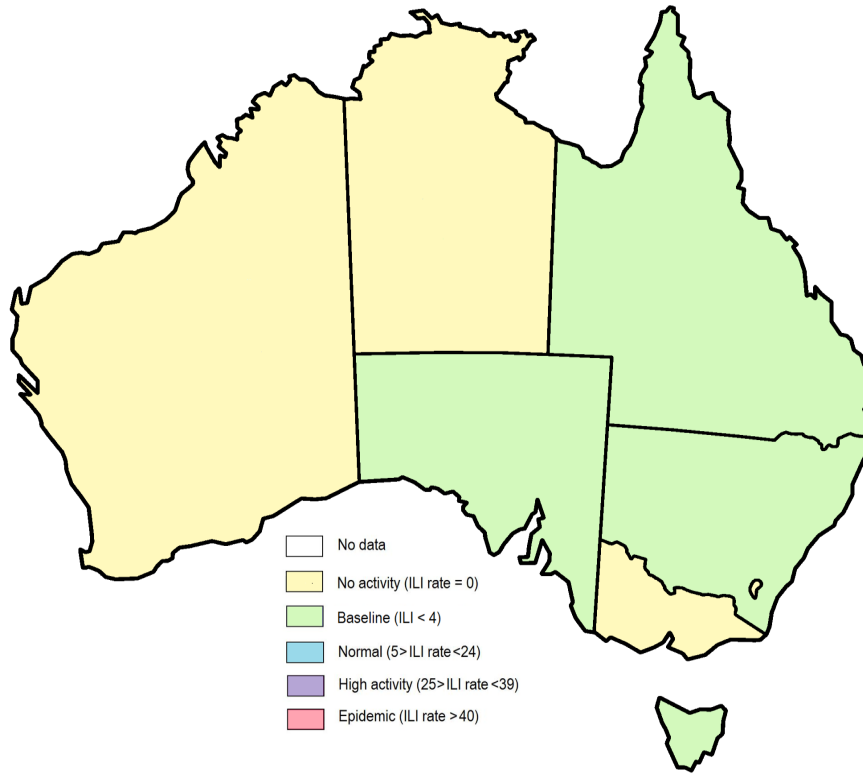


Figure 1. Map of ILI activity by jurisdiction, weeks 15 - 16, 2021.

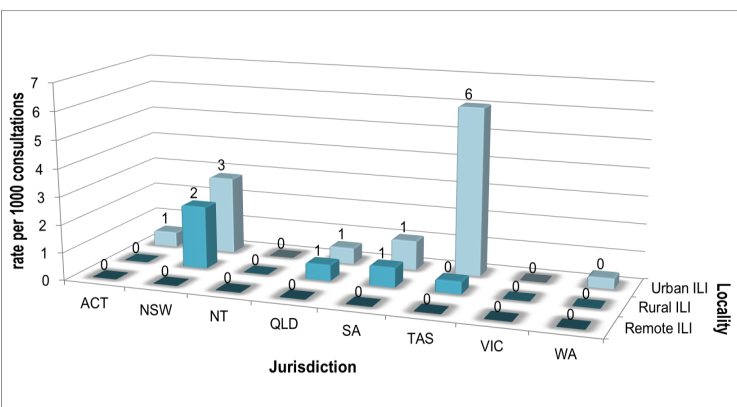


Figure 2. ASPREN + VicSPIN rate of ILI by locality and jurisdiction, weeks 15 - 16, 2021.

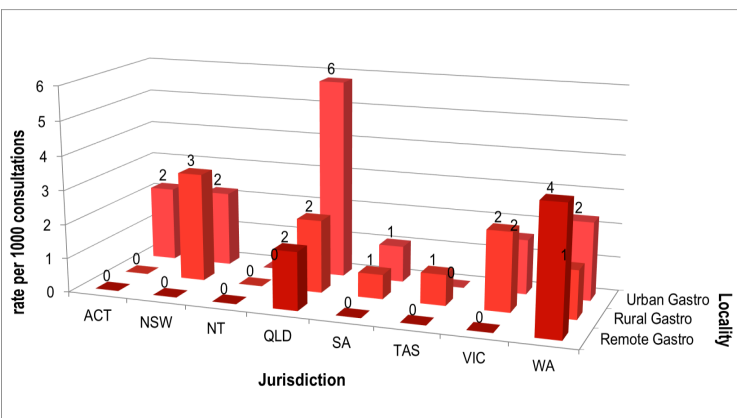


Figure 3. ASPREN rate of gastroenteritis by locality and jurisdiction, weeks 15 - 16, 2021.

NATIONAL SUMMARY

ILI Influenza-like-illness levels remain steady below baseline levels

0 Case of influenza have been detected in this reporting period
0 x Influenza A
0 x Influenza B

0% Influenza positivity during the reporting period.

0 Cases of influenza have been detected this year:
0 x Influenza A
0 x Influenza B

Gastroenteritis Gastroenteritis levels remain steady below baseline levels

**SYNDROMIC SURVEILLANCE
REPORTING**

Reports were received from 215 reporters from 8 states and territories during the reporting period. During weeks 15 and 16 reporters saw a total of 40,257 patients.

INFLUENZA-LIKE-ILLNESS (ILI)

Nationally, ILI notifications increased during the period with 46 notifications being reported in weeks 15–16. ILI rates reported in this period remained steady at 1 case per 1000 consultations (weighted). This was similar to the previous fortnight where rates were 1 case per 1000 consultations in weeks 13 and 14. For the same reporting period in 2020, ILI rates were higher at 2 cases per 1000 consultations for weeks 15 and 16 (see Fig. 5).

GASTROENTERITIS

Nationally, gastroenteritis notifications increased over the period with 79 notifications reported. Gastroenteritis rates reported in this period remained steady at 2 cases per 1000 consultations in both weeks 15 and 16, compared to 2 cases per 1000 consultations in weeks 13 and 14 (see Fig. 5) respectively.

* ASPREN is funded by the Commonwealth's Department of Health, Office of Health Protection, Vaccine Preventable Disease Surveillance Section.

* VicSPIN is funded by Melbourne Health and the Victorian Infectious Diseases Reference Laboratory.

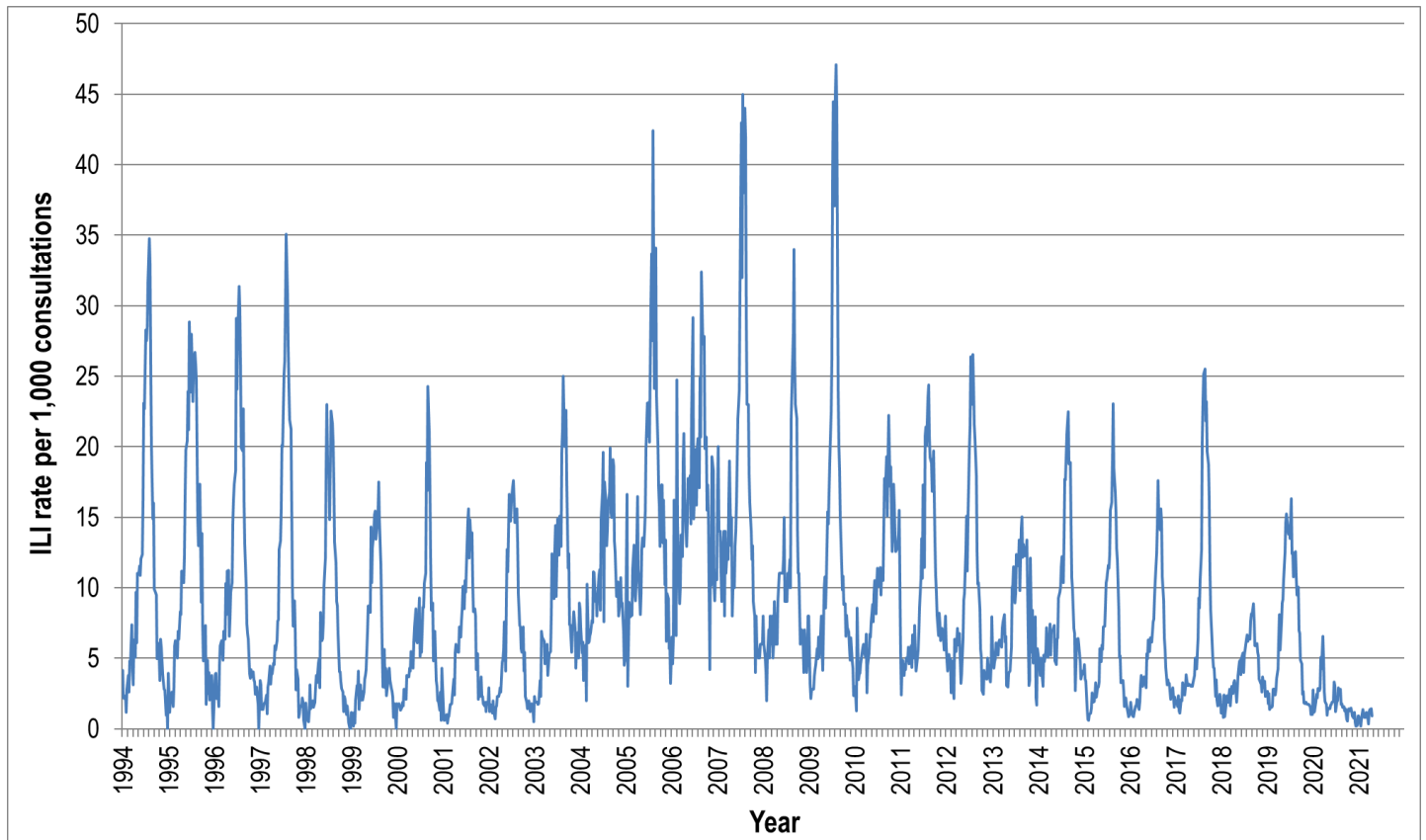


Figure 4. ASPREN ILI rates 1994 - 2021.

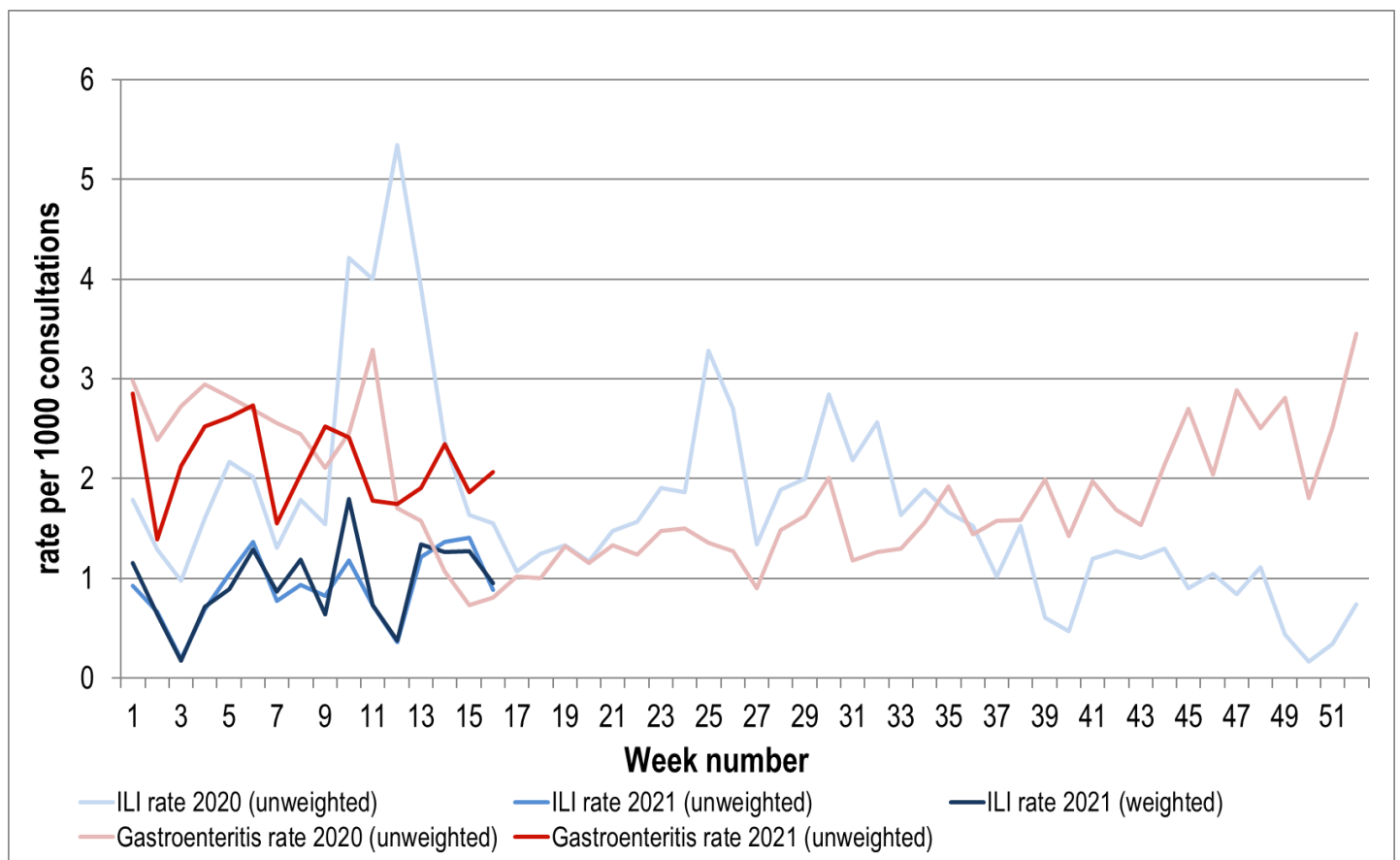


Figure 5. ASPREN + VicSPIN ILI and ASPREN gastroenteritis rates 2020-21. Weighted rates are weighted to account for population size differences between jurisdictions, using population estimates from the 2011 Australian Census.

VIROLOGICAL SURVEILLANCE

24% of all ILI patients were swab tested during weeks 15 and 16 (see Figure 6).

No cases of Influenza were detected during this period. There were 8 cases of Rhinovirus detected making it the most common respiratory virus circulating the nation at present (see figure 8).

Viral laboratory data are provided by SA Pathology and VicSPIN laboratories.

	Reporting Period 12 April - 25 April 2021	YTD 01 Jan - 25 April 2021
Total number of ILI notifications	46	243
Number of swab tests performed	11	93
% ILI patients tested	24%	38%
% of swab tests positive for influenza	0%	0%

Figure 6. ASPREN + VicSPIN virological surveillance results overview for 2021 #

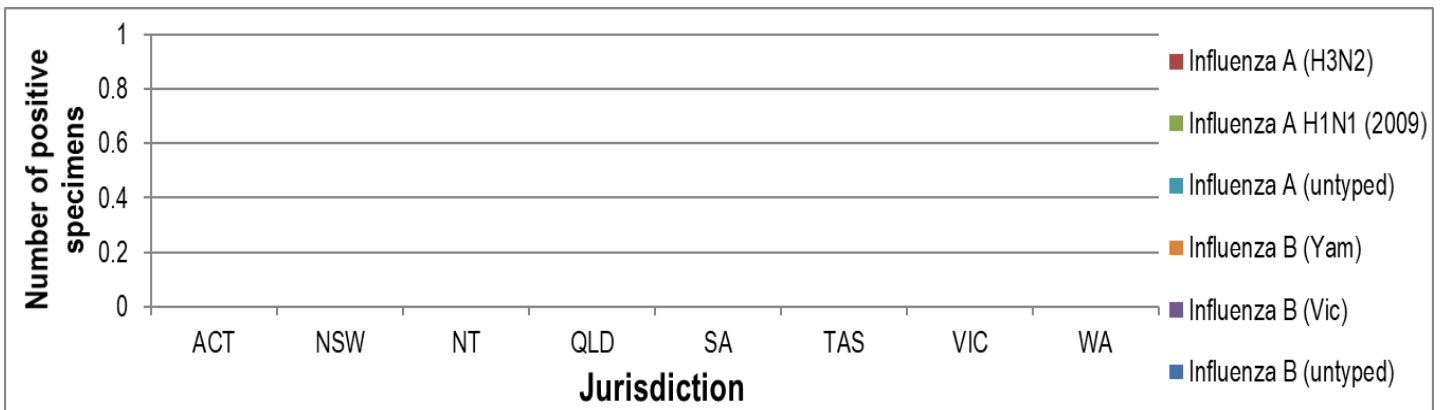


Figure 7. ASPREN + VicSPIN influenza subtype analysis by jurisdiction for 2021 #

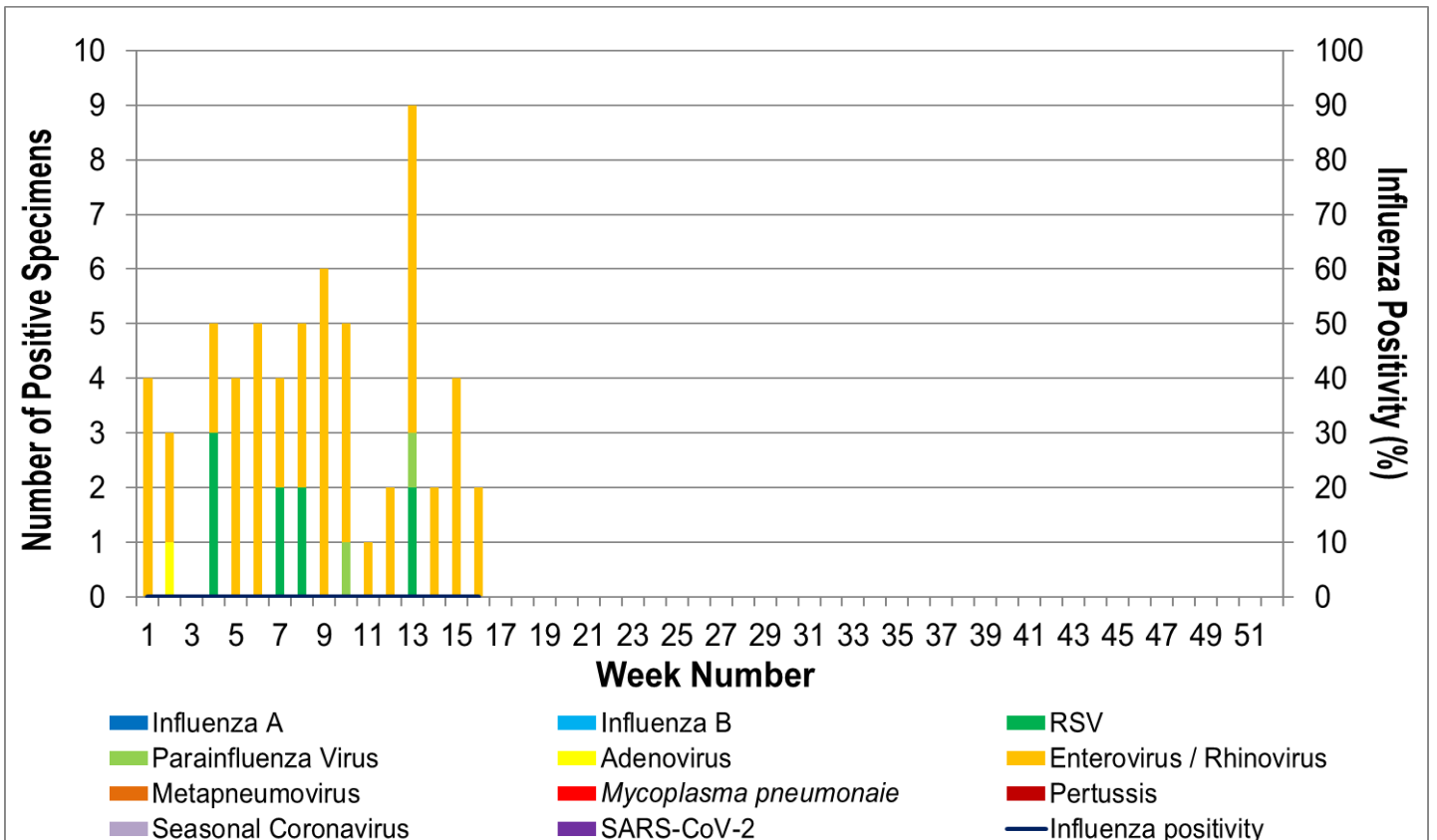


Figure 8. ASPREN, VicSPIN laboratory detection of influenza and other respiratory viruses for 2021 #