

**NATIONAL PRIMARY CARE INFECTIOUS DISEASES
SENTINEL SURVEILLANCE FORTNIGHTLY REPORT**

Combining data from The Australian Sentinel Practices Research Network (ASPREN)*
and the Victorian Sentinel Practitioners Influenza Network (VicSPIN)*

No. 06, 2021 - 15th March — 28th March 2021

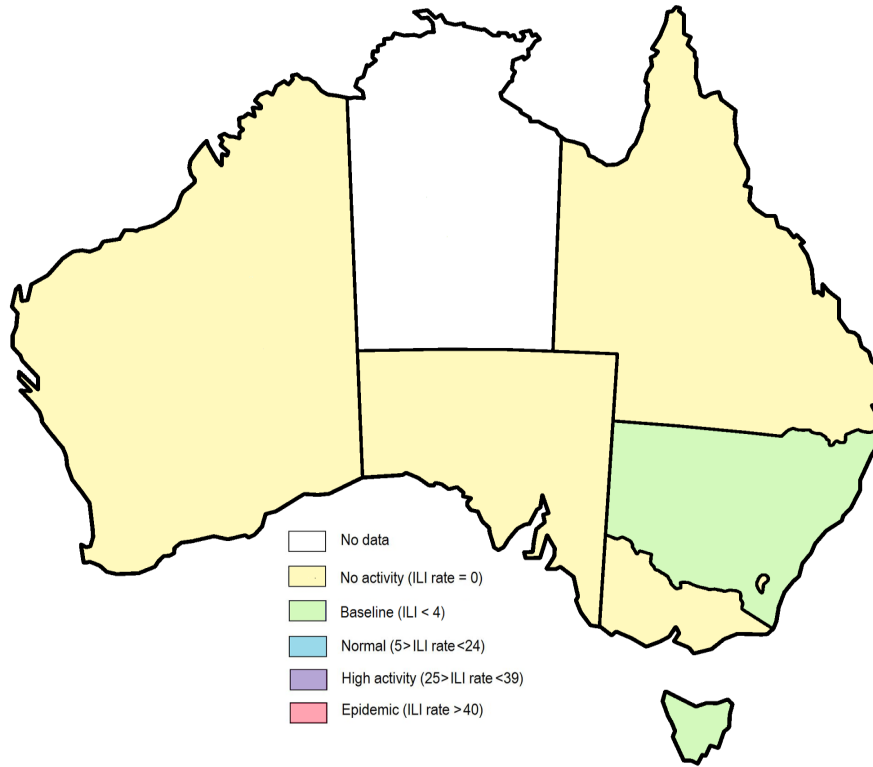


Figure 1. Map of ILI activity by jurisdiction, weeks 11 - 12, 2021.

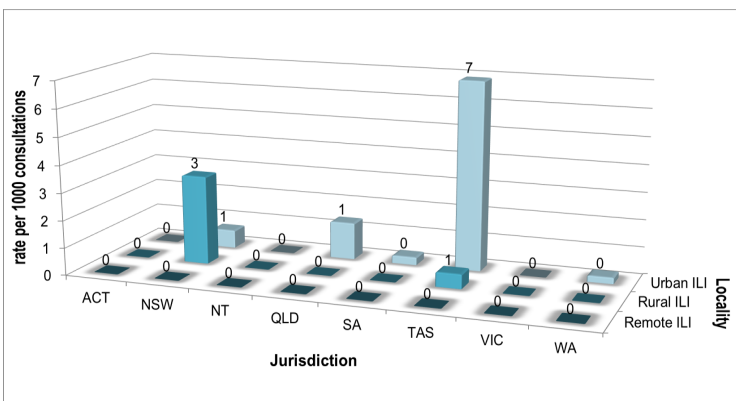


Figure 2. ASPREN + VicSPIN rate of ILI by locality and jurisdiction, weeks 11 - 12, 2021.

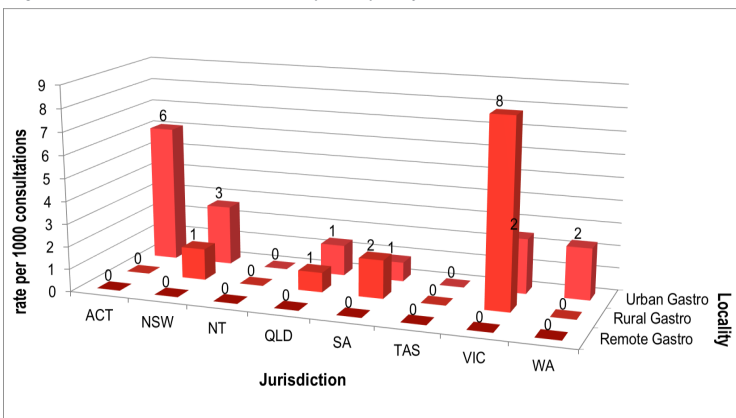



Figure 3. ASPREN rate of gastroenteritis by locality and jurisdiction, weeks 11 - 12, 2021.


NATIONAL SUMMARY

 Influenza-like-illness levels remain steady below baseline levels

0 Case of influenza have been detected in this reporting period
0 x Influenza A
0 x Influenza B

0% Influenza positivity during the reporting period.

0 Cases of influenza have been detected this year:
0 x Influenza A
0 x Influenza B

 Gastroenteritis levels remain steady below baseline levels

**SYNDROMIC SURVEILLANCE
REPORTING**

Reports were received from 190 reporters from 8 states and territories during the reporting period. During weeks 11 and 12 reporters saw a total of 32,925 patients.

INFLUENZA-LIKE-ILLNESS (ILI)

Nationally, ILI notifications significantly decreased during the period with 18 notifications being reported in weeks 11–12. ILI rates reported in this period decreased to 1 and 0.3 case per 1000 consultations (weighted) respectively. This was lower than the previous fortnight where rates were 1 and 2 cases per 1000 consultations in weeks 9 and 10 respectively. For the same reporting period in 2020, ILI rates were much higher at 4 and 7 cases per 1000 consultations for weeks 11 and 12 (see Fig. 5) respectively.

GASTROENTERITIS

Nationally, gastroenteritis notifications significantly decreased over the period with 58 notifications reported. Gastroenteritis rates reported in this period slightly decreased to 2 cases per 1000 consultations in both weeks 11 and 12, compared to 3 and 2 cases per 1000 consultations in weeks 9 and 10 (see Fig. 5) respectively.

* ASPREN is funded by the Commonwealth's Department of Health, Office of Health Protection, Vaccines and Preventable Disease Surveillance Section.

* VicSPIN is funded by Melbourne Health and the Victorian Infectious Diseases Reference Laboratory.

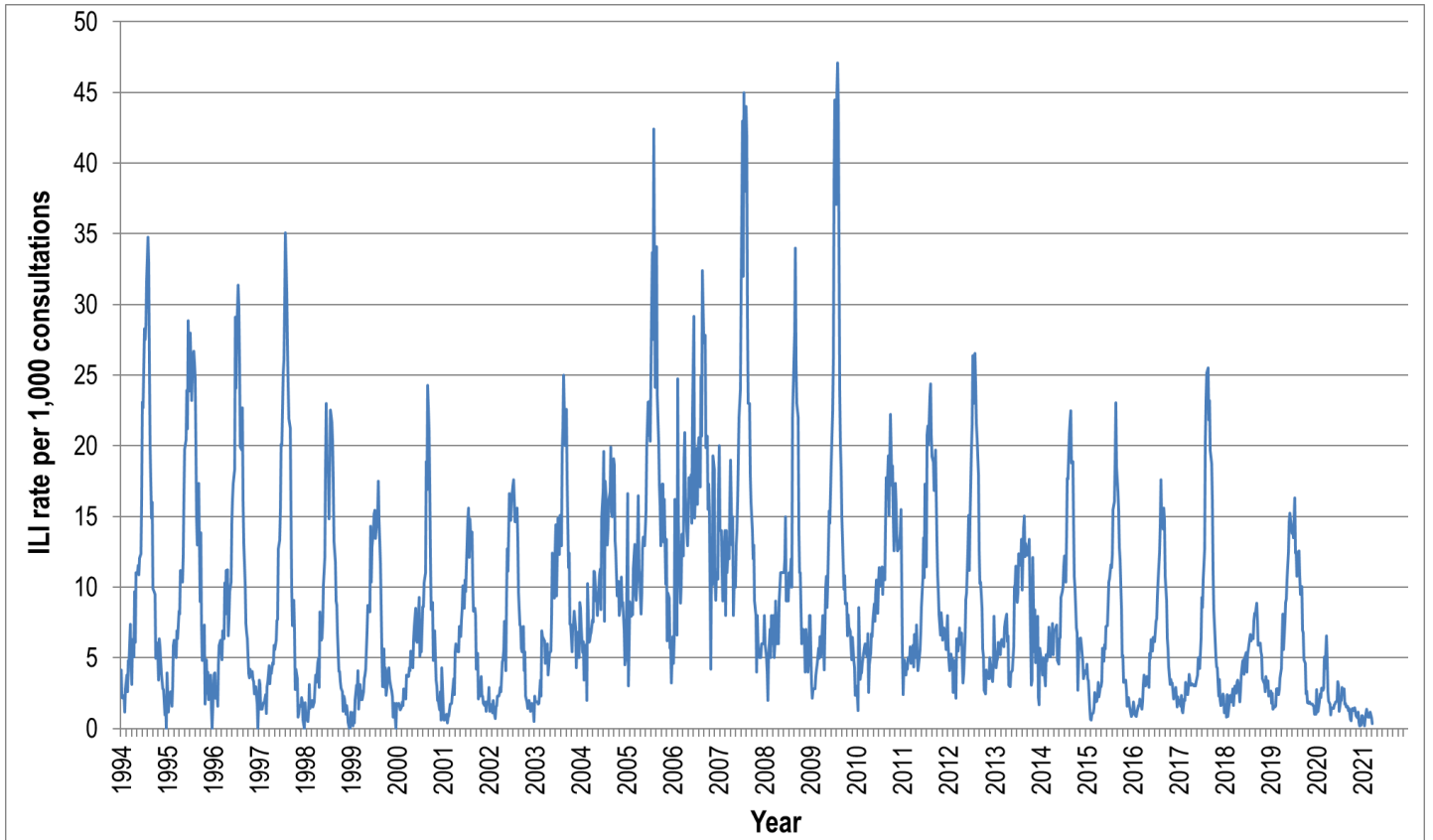


Figure 4. ASPREN ILI rates 1994 - 2021.

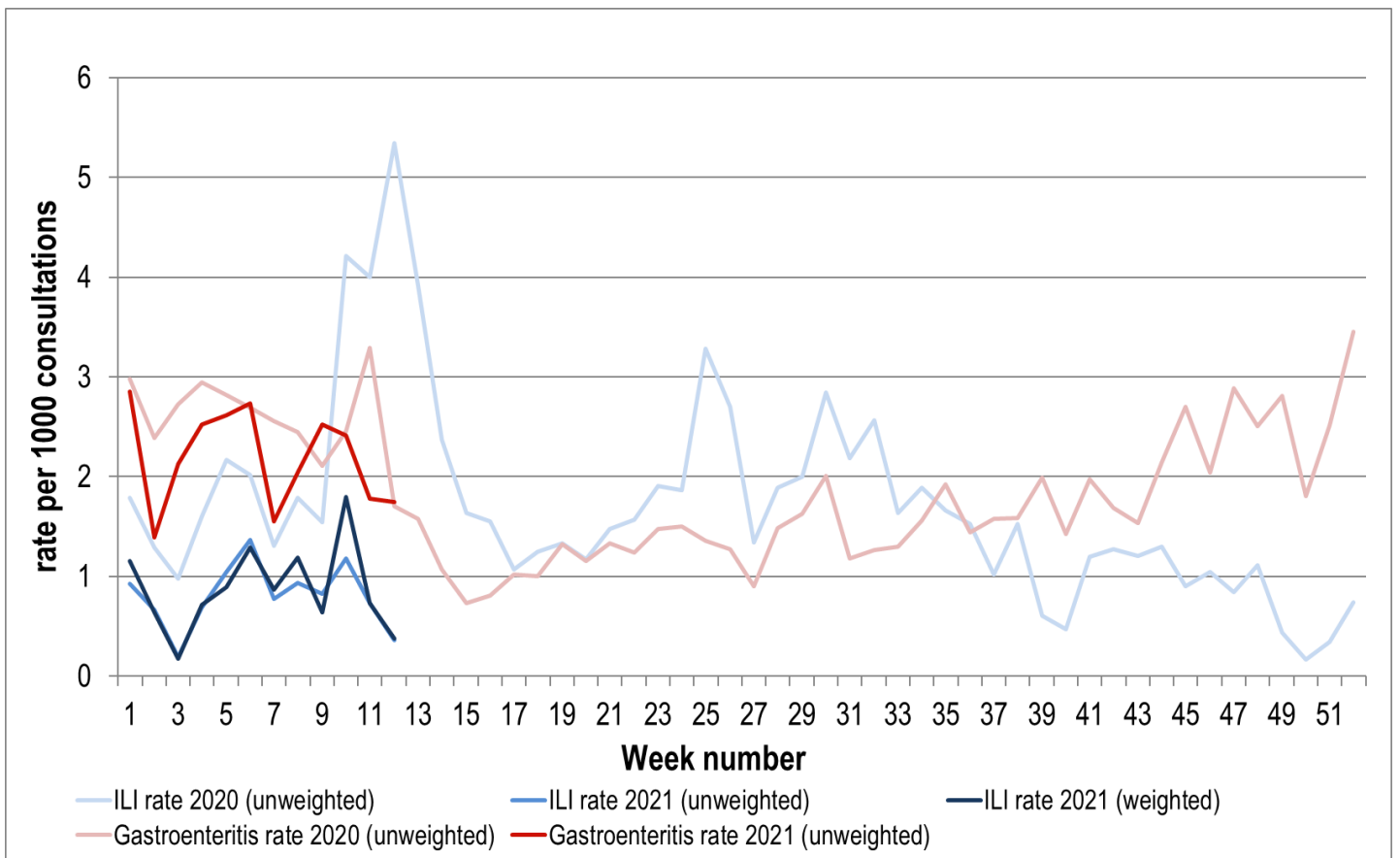


Figure 5. ASPREN + VicSPIN ILI and ASPREN gastroenteritis rates 2020-21. Weighted rates are weighted to account for population size differences between jurisdictions, using population estimates from the 2011 Australian Census.

VIROLOGICAL SURVEILLANCE

50% of all ILI patients were swab tested during weeks 11 and 12 (see Figure 6).

No cases of Influenza were detected during this period. There were 3 cases of Rhinovirus detected making it the most common respiratory virus circulating the nation at present (see figure 8).

Viral laboratory data are provided by SA Pathology and VicSPIN laboratories.

| | Reporting Period | YTD |
|--|--------------------------|------------------------|
| | 15 March - 28 March 2021 | 01 Jan - 28 March 2021 |
| Total number of ILI notifications | 18 | 157 |
| Number of swab tests performed | 9 | 69 |
| % ILI patients tested | 50% | 44% |
| % of swab tests positive for influenza | 0% | 0% |

Figure 6. ASPREN + VicSPIN virological surveillance results overview for 2021 #

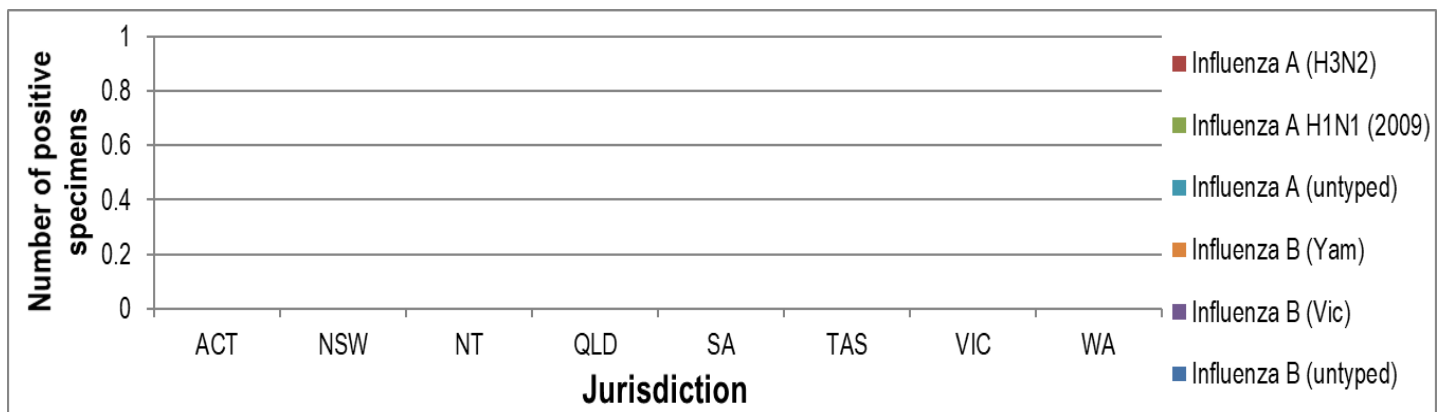


Figure 7. ASPREN + VicSPIN influenza subtype analysis by jurisdiction for 2021 #

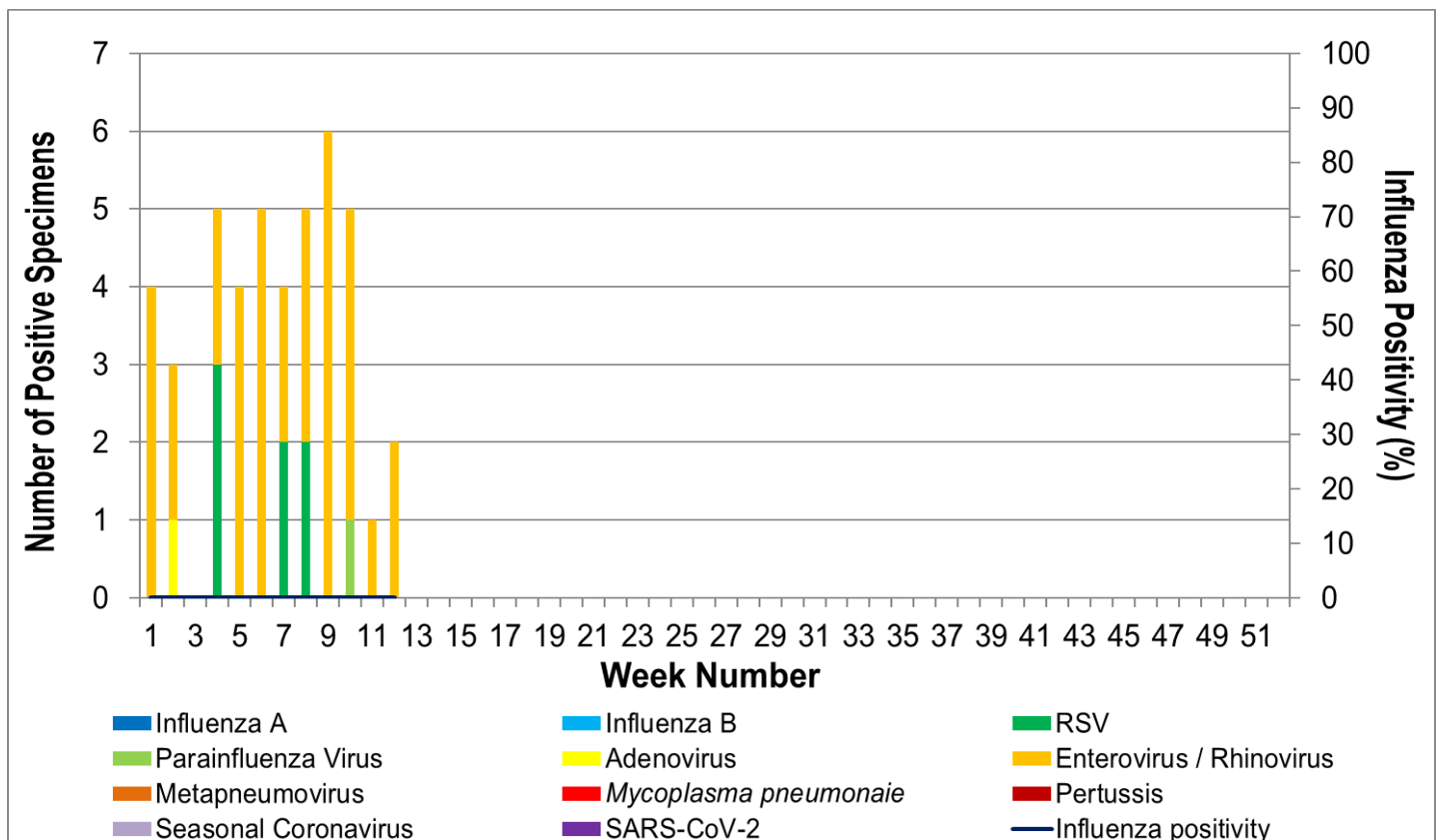


Figure 8. ASPREN, VicSPIN laboratory detection of influenza and other respiratory viruses for 2021 #

The Australian Sentinel Practices Research Network is supported by the Australian Government Department of Health (the Department). The opinions expressed in this paper are those of the authors, and do not necessarily represent the views of the Department.

Please note: This report is based on data available as at 8 April 2021. Delays in the reporting of data may cause data to change retrospectively.