

**NATIONAL PRIMARY CARE INFECTIOUS DISEASES  
SENTINEL SURVEILLANCE FORTNIGHTLY REPORT**

Combining data from The Australian Sentinel Practices Research Network (ASPREN)\*  
and the Victorian Sentinel Practitioners Influenza Network (VicSPIN)\*

No. 13, 2022 - 20th June — 3rd July 2022

**NATIONAL SUMMARY**



Influenza-like-illness levels are increasing

**24**

Case of influenza have been detected in this reporting period  
24 x Influenza A  
0 x Influenza B

**29%**

Influenza positivity during the reporting period.

**139**

Cases of influenza have been detected this year:  
139 x Influenza A  
0 x Influenza B



Gastroenteritis levels remain steady below baseline levels

**SYNDROMIC SURVEILLANCE  
REPORTING**

Reports were received from 223 reporters from 8 states and territories during the reporting period. During weeks 25 and 26 reporters saw a total of 34,447 patients.

**INFLUENZA-LIKE-ILLNESS (ILI)**

Nationally, ILI notifications increased during the period with 359 notifications being

reported in weeks 25–26. ILI rates reported in this period were 14 and 9 cases per 1000 consultations (weighted). This was higher than the previous fortnight where rates were 11 cases per 1000 consultations in weeks 23 and 24. For the same reporting period in 2021, ILI rates were significantly lower at 2 cases per 1000 consultations for weeks 25 and 26 (see Fig. 5).

**GASTROENTERITIS**

Nationally, gastroenteritis notifications were similar at 50 notifications reported. Gastroenteritis rates reported in this period remained steady at 2 cases per 1000 consultations in weeks 25 and 26, compared to 2 cases per 1000 consultations in weeks 23 and 24 (see Fig. 5).

\* ASPREN is funded by the Commonwealth's Department of Health, Office of Health Protection, Vaccinable Preventable Disease Surveillance Section.

\* VicSPIN is funded by Melbourne Health and the Victorian Infectious Diseases Reference Laboratory.

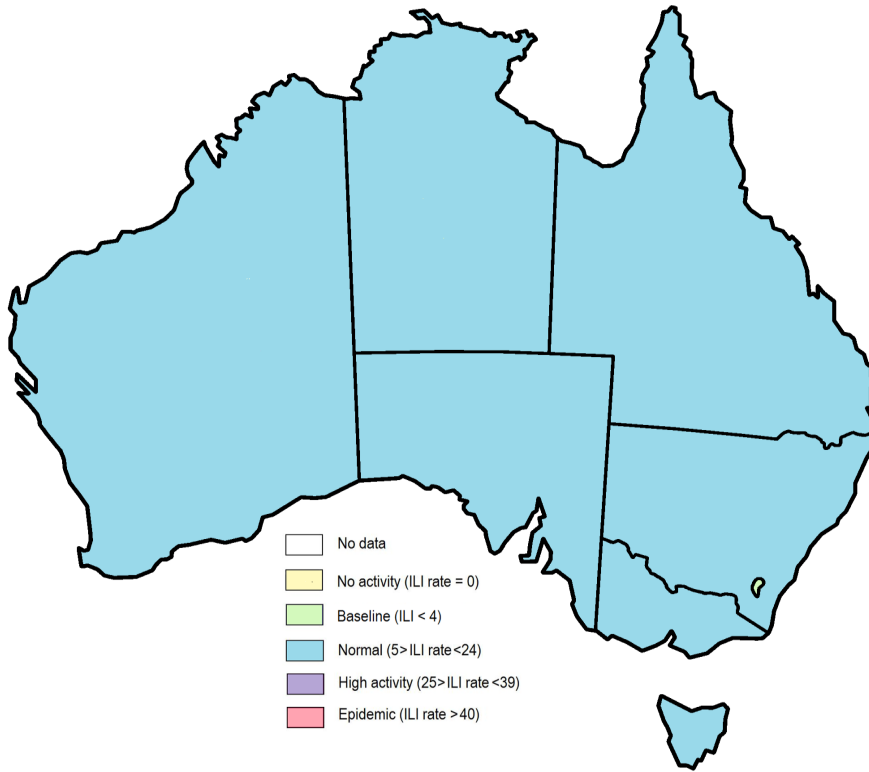


Figure 1. Map of ILI activity by jurisdiction, weeks 25 - 26, 2022.

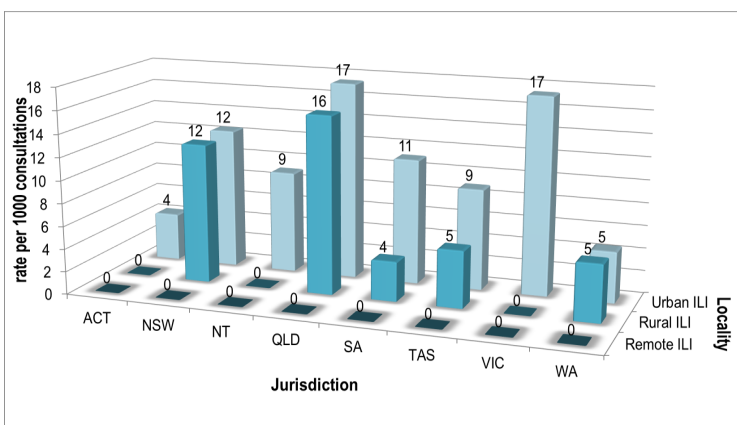


Figure 2. ASPREN rate of ILI by locality and jurisdiction, weeks 25 - 26, 2022.

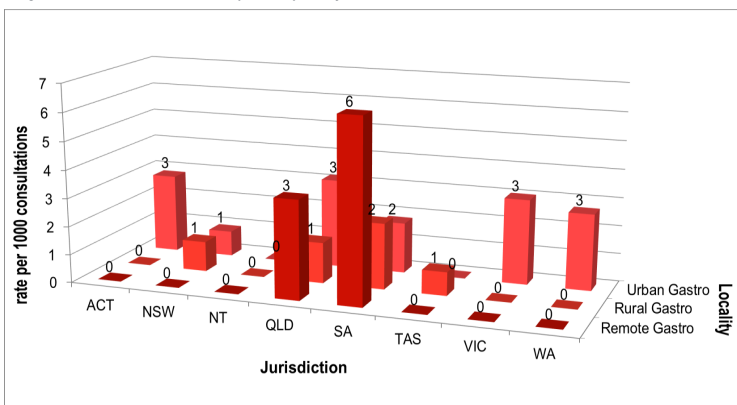


Figure 3. ASPREN rate of gastroenteritis by locality and jurisdiction, weeks 25 - 26, 2022.

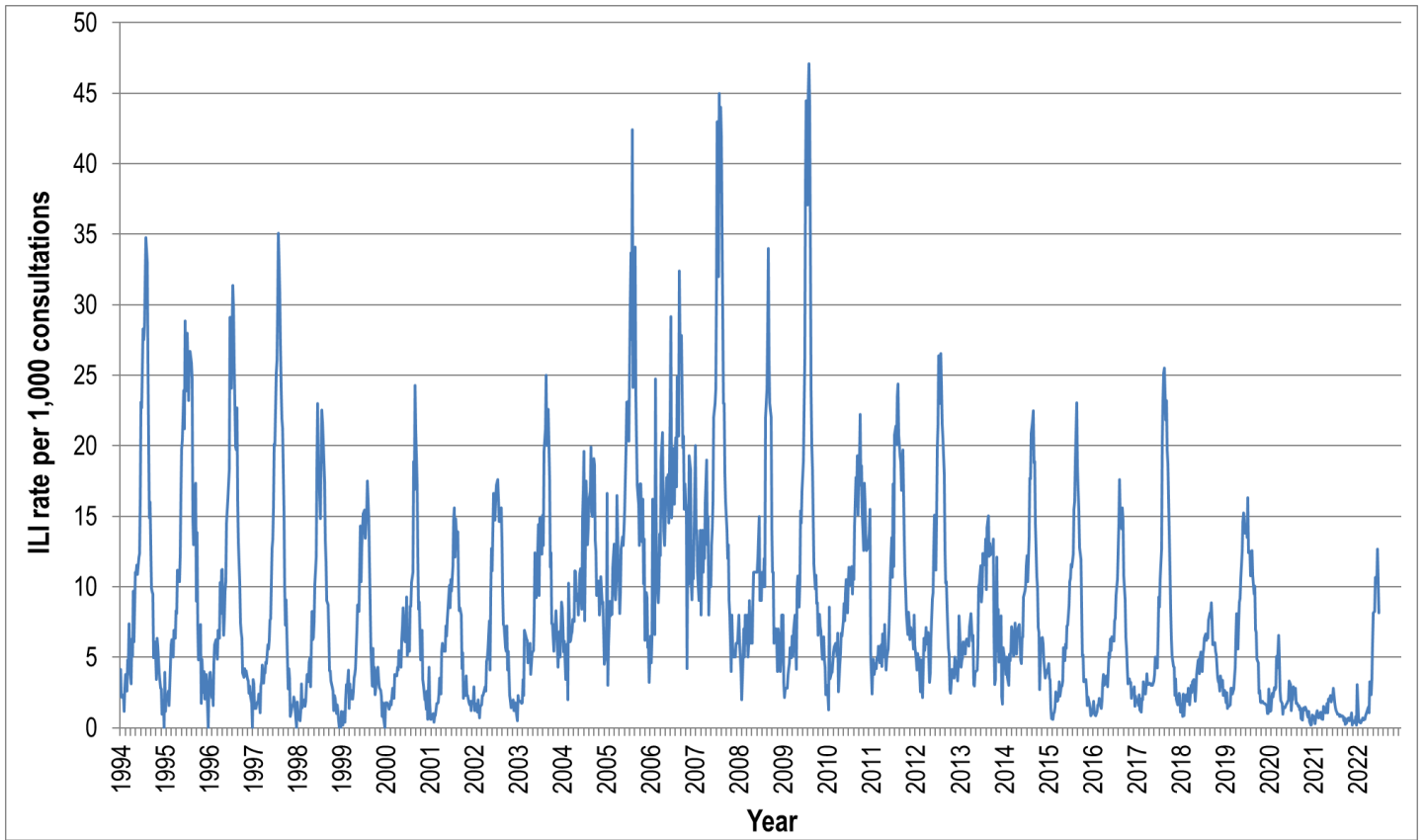


Figure 4. ASPREN ILI rates 1994 - 2022.

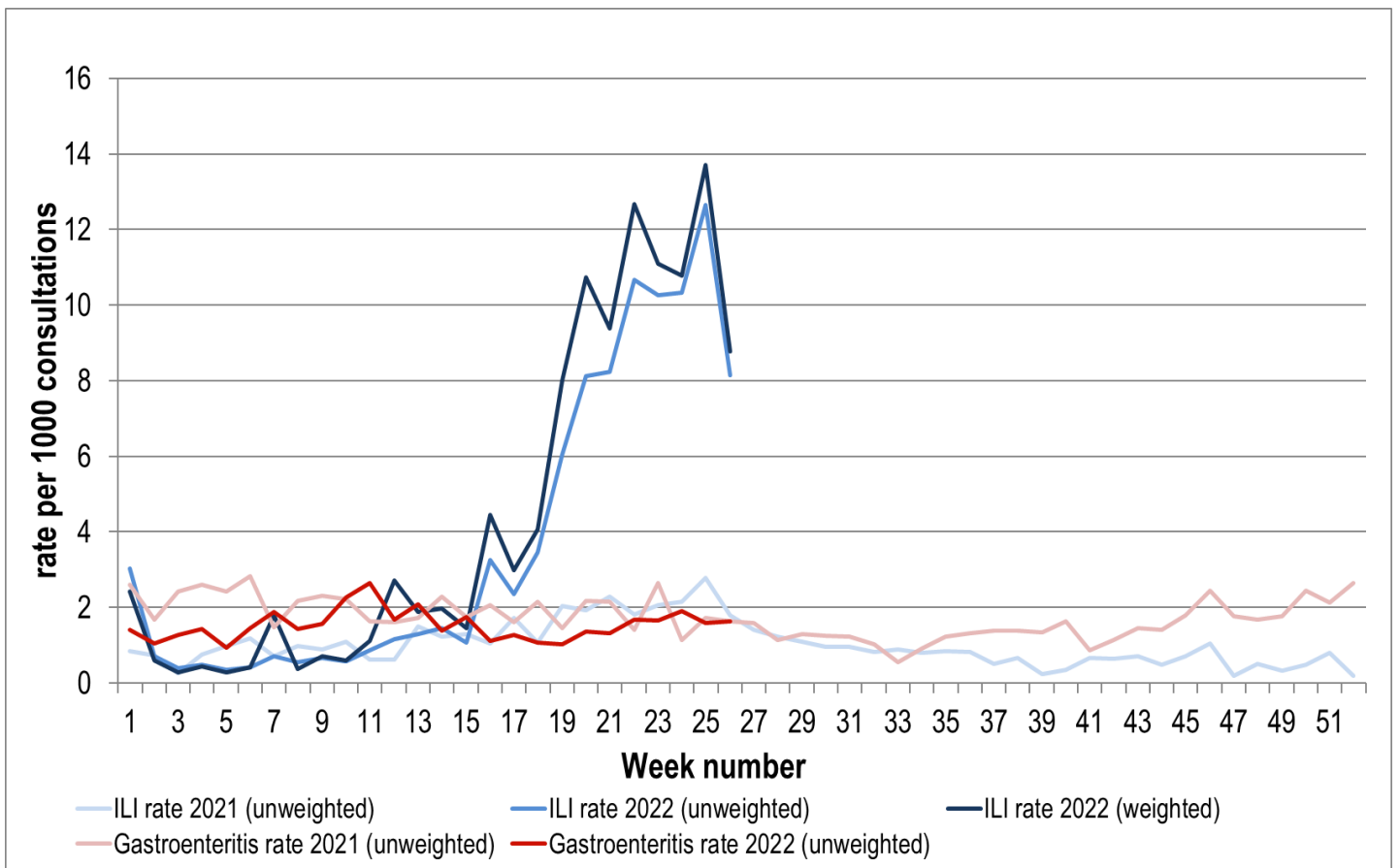


Figure 5. ASPREN + VicSPIN ILI and ASPREN gastroenteritis rates 2021-22. Weighted rates are weighted to account for population size differences between jurisdictions, using population estimates from the 2011 Australian Census.

### VIROLOGICAL SURVEILLANCE

23% of all ILI patients were swab tested during weeks 25 and 26 (see Figure 6).

24 cases of Influenza A and 6 cases of SARS-CoV-2 were detected during this period. There were 8 cases of Rhinovirus detected making it the second most common respiratory virus circulating the nation at present (see figure 8).

# Viral laboratory data are provided by SA Pathology and VicSPIN laboratories.

	Reporting Period 20 June - 3 July 2022	YTD 1 Jan - 3 July 2022
Total number of ILI notifications	359	1585
Number of swab tests performed	84	461
% ILI patients tested	23%	29%
% of swab tests positive for influenza	29%	30%

Figure 6. ASPREN + VicSPIN virological surveillance results overview for 2022 #

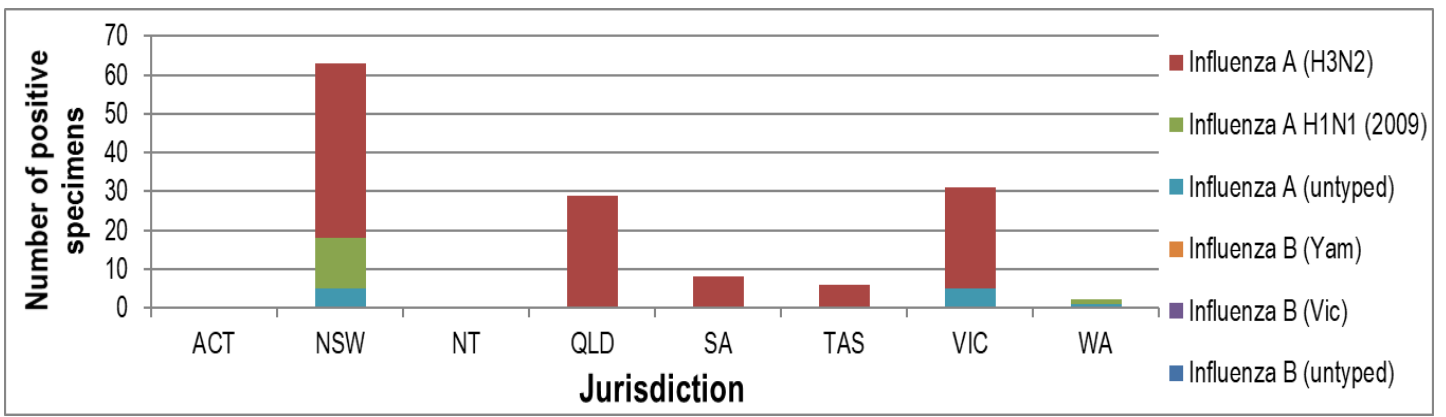


Figure 7. ASPREN + VicSPIN influenza subtype analysis by jurisdiction for 2022 #

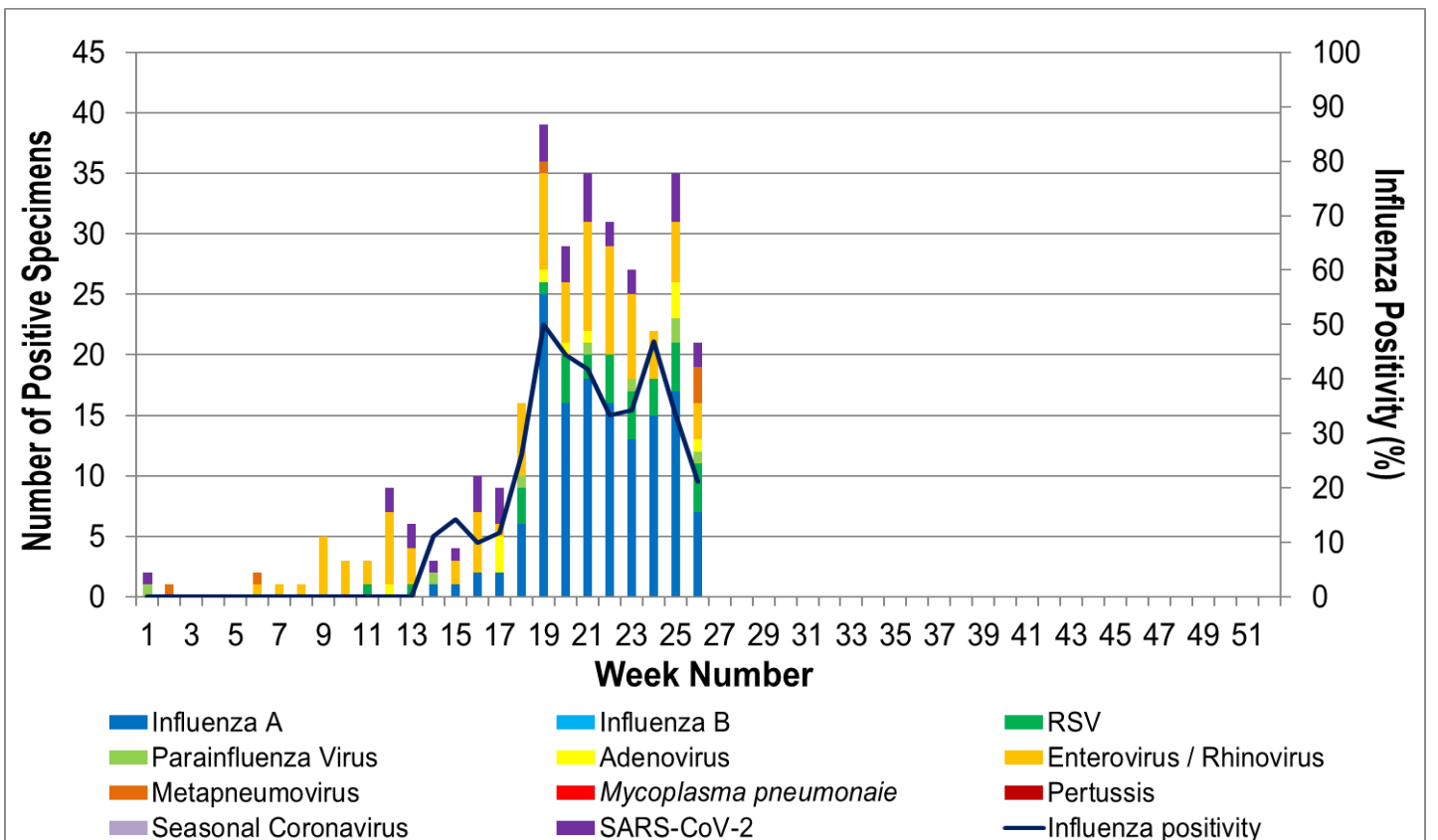


Figure 8. ASPREN, VicSPIN laboratory detection of influenza and other respiratory viruses for 2022 #

The Australian Sentinel Practices Research Network is supported by the Australian Government Department of Health (the Department). The opinions expressed in this paper are those of the authors, and do not necessarily represent the views of the Department.

Please note: This report is based on data available as at 14 July 2022. Delays in the reporting of data may cause data to change retrospectively.