

**NATIONAL PRIMARY CARE INFECTIOUS DISEASES
SENTINEL SURVEILLANCE FORTNIGHTLY REPORT**

Combining data from The Australian Sentinel Practices Research Network (ASPREN)*
and the Victorian Sentinel Practitioners Influenza Network (VicSPIN)*

No. 12, 2022 - 6th June — 19th June 2022

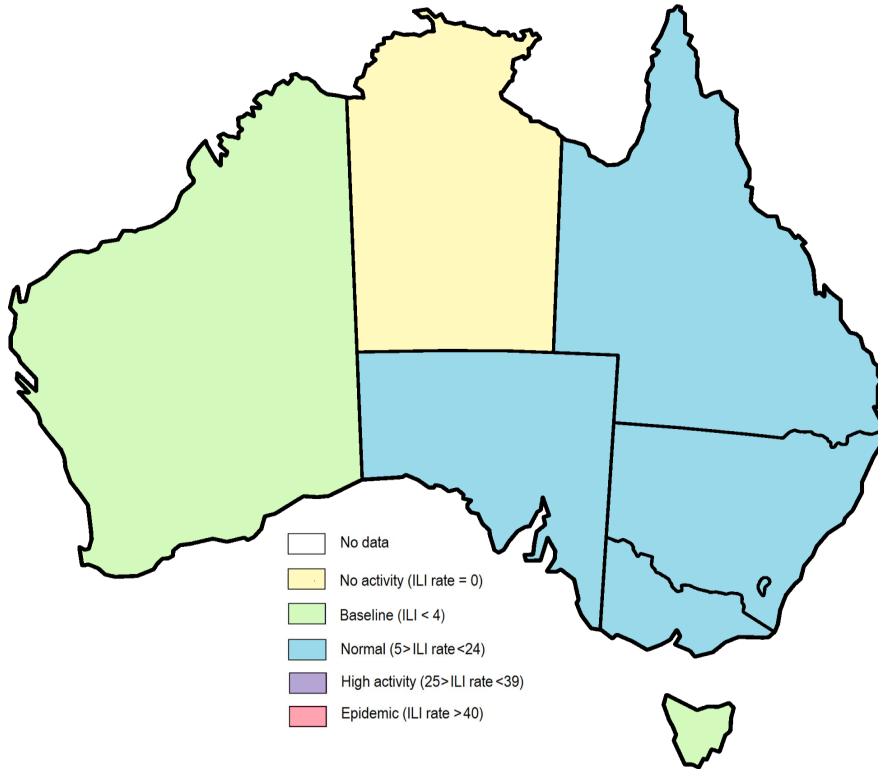


Figure 1. Map of ILI activity by jurisdiction, weeks 23 - 24, 2022.

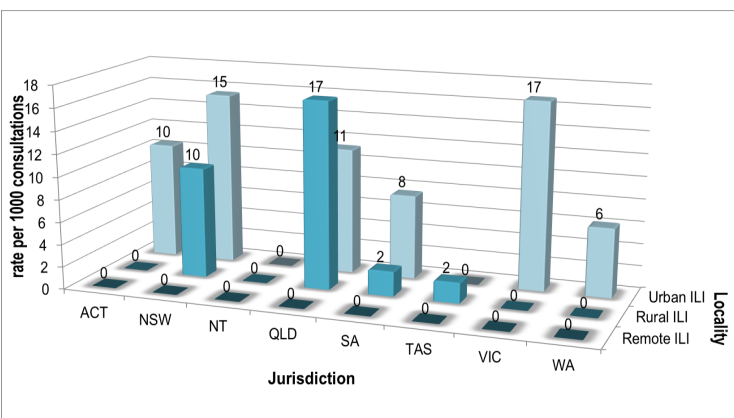


Figure 2. ASPREN rate of ILI by locality and jurisdiction, weeks 23 - 24, 2022.

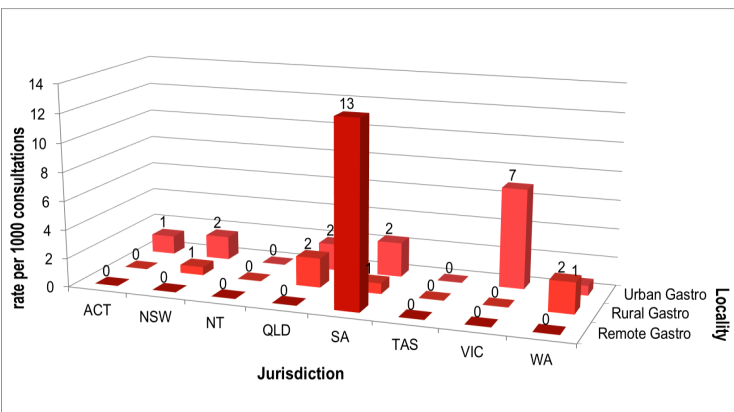


Figure 3. ASPREN rate of gastroenteritis by locality and jurisdiction, weeks 23 - 24, 2022.

NATIONAL SUMMARY



Influenza-like-illness levels are slightly decreasing

28

Case of influenza have been detected in this reporting period
28 x Influenza A
0 x Influenza B

40%

Influenza positivity during the reporting period.

115

Cases of influenza have been detected this year:
115 x Influenza A
0 x Influenza B



Gastroenteritis levels remain steady below baseline levels

**SYNDROMIC SURVEILLANCE
REPORTING**

Reports were received from 223 reporters from 8 states and territories during the reporting period. During weeks 23 and 24 reporters saw a total of 32,847 patients.

INFLUENZA-LIKE-ILLNESS (ILI)

Nationally, ILI notifications remained steady during the period with 338 notifications being reported in weeks 23—24. ILI rates reported in this period were 11 cases per 1000 consultations (weighted). This was slightly lower than the previous fortnight where rates were 9 and 13 cases per 1000 consultations in weeks 21 and 22 respectively. For the same reporting period in 2021, ILI rates were significantly lower at 2 cases per 1000 consultations for weeks 23 and 24 (see Fig. 5).

GASTROENTERITIS

Nationally, gastroenteritis notifications slightly increased to 52 notifications reported. Gastroenteritis rates reported in this period remained steady at 2 cases per 1000 consultations in weeks 23 and 24, compared to 2 cases per 1000 consultations in weeks 21 and 22 (see Fig. 5).

* ASPREN is funded by the Commonwealth's Department of Health, Office of Health Protection, Vaccine Preventable Disease Surveillance Section.

* VicSPIN is funded by Melbourne Health and the Victorian Infectious Diseases Reference Laboratory.

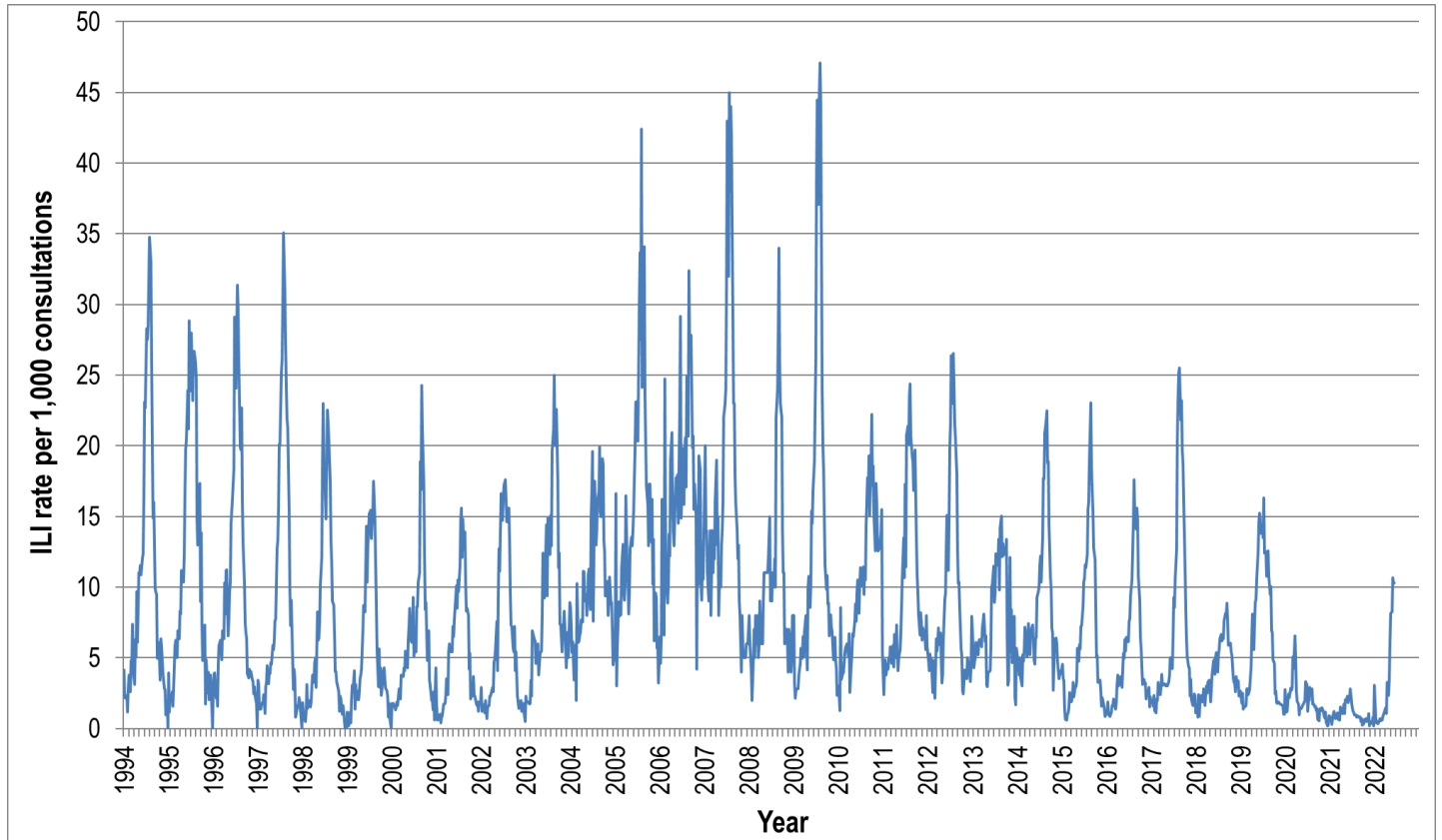


Figure 4. ASPREN ILI rates 1994 - 2022.

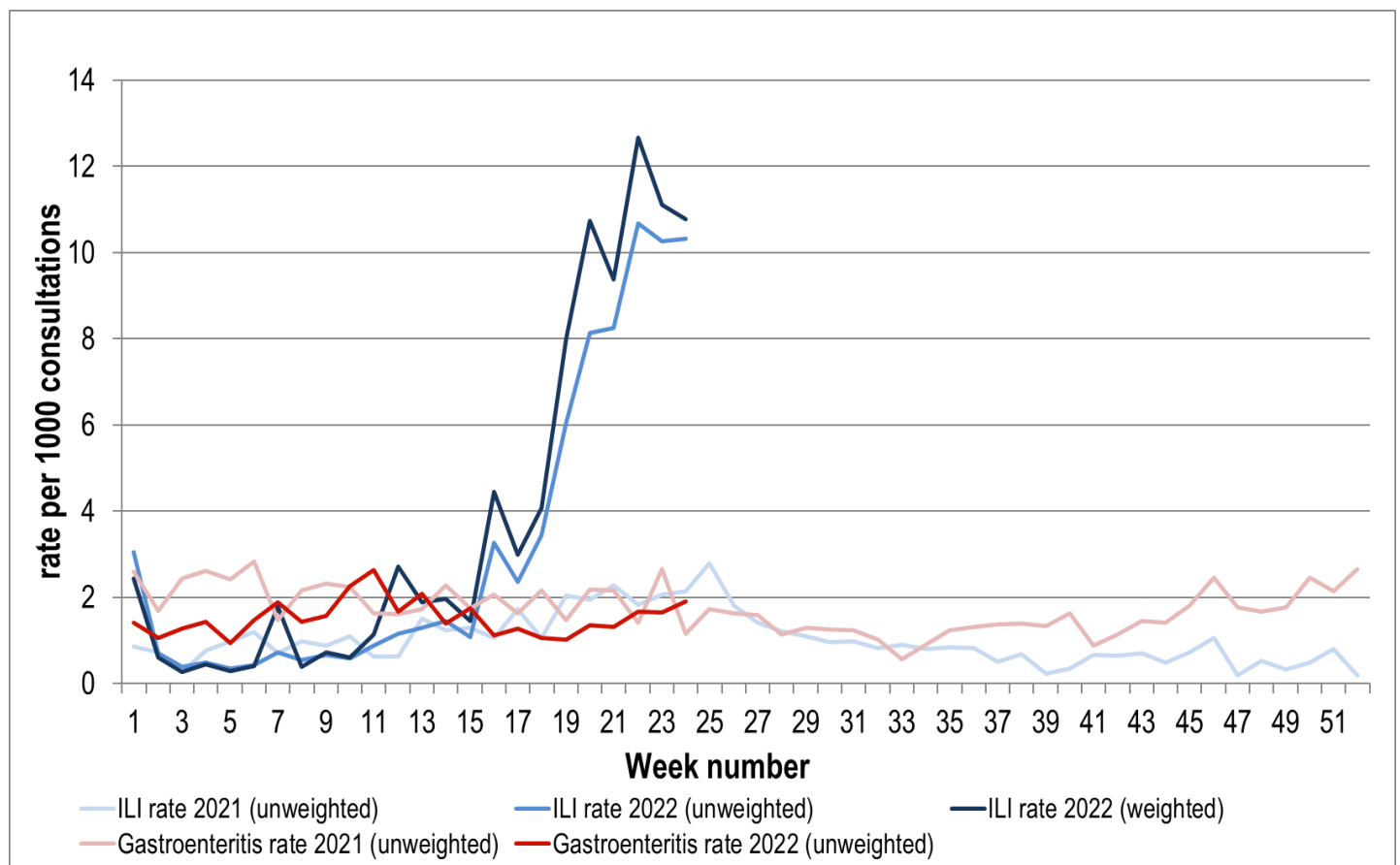


Figure 5. ASPREN + VicSPIN ILI and ASPREN gastroenteritis rates 2021-22. Weighted rates are weighted to account for population size differences between jurisdictions, using population estimates from the 2011 Australian Census.

VIROLOGICAL SURVEILLANCE

21% of all ILI patients were swab tested during weeks 23 and 24 (see Figure 6).

28 cases of Influenza A and 2 cases of SARS-CoV-2 were detected during this period. There were 11 cases of Rhinovirus detected making it the second most common respiratory virus circulating the nation at present (see figure 8).

Viral laboratory data are provided by SA Pathology and VicSPIN laboratories.

	Reporting Period 6 June - 19 June 2022	YTD 1 Jan - 19 June 2022
Total number of ILI notifications	338	1226
Number of swab tests performed	70	377
% ILI patients tested	21%	31%
% of swab tests positive for influenza	40%	31%

Figure 6. ASPREN + VicSPIN virological surveillance results overview for 2022 #

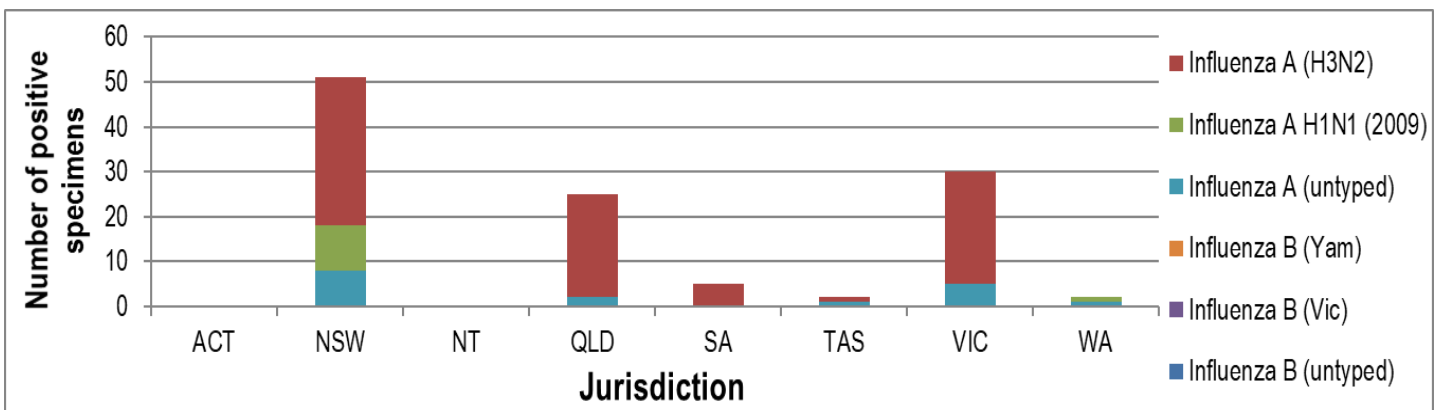


Figure 7. ASPREN + VicSPIN influenza subtype analysis by jurisdiction for 2022 #

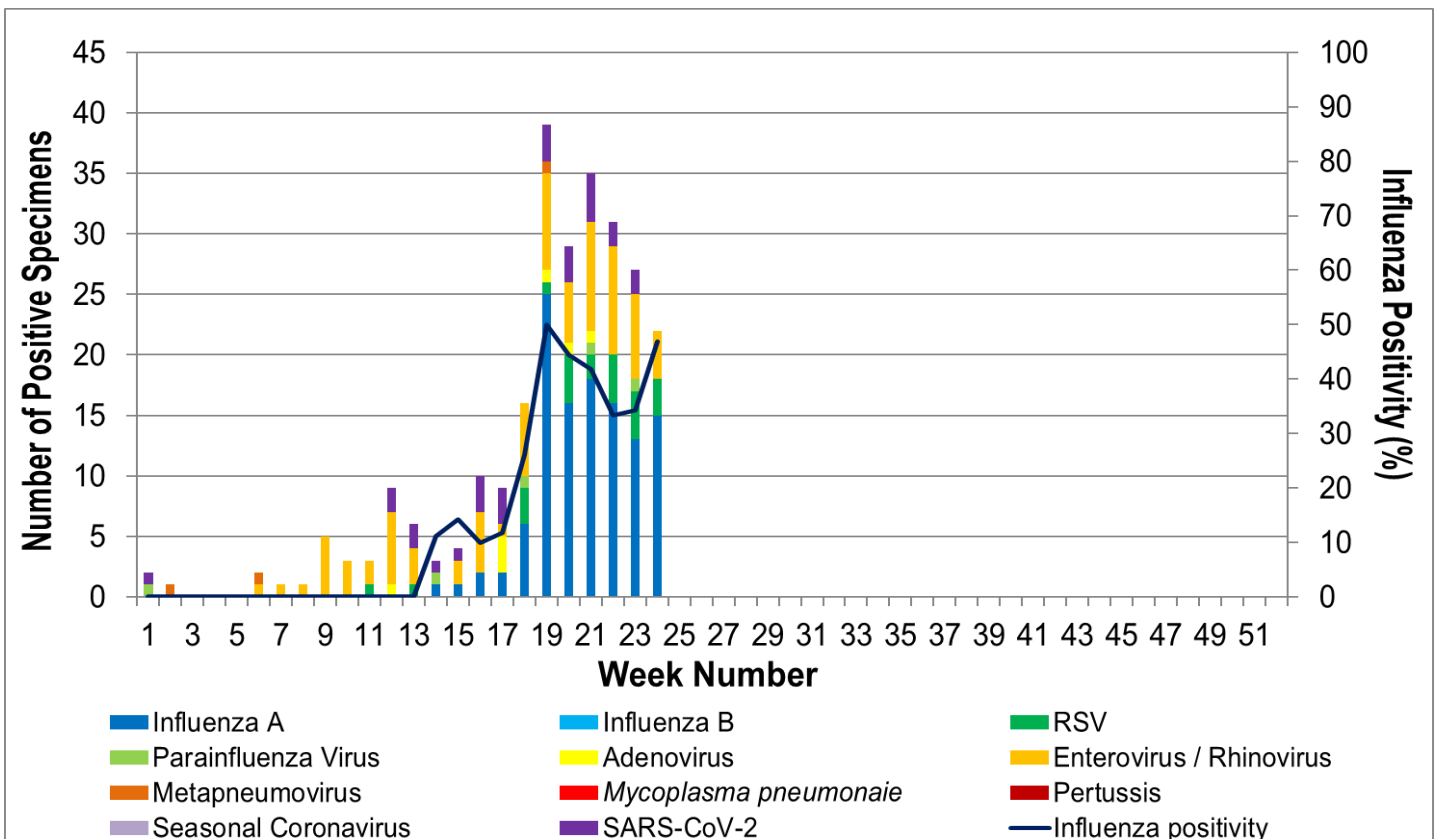


Figure 8. ASPREN, VicSPIN laboratory detection of influenza and other respiratory viruses for 2022 #