

**NATIONAL PRIMARY CARE INFECTIOUS DISEASES  
SENTINEL SURVEILLANCE FORTNIGHTLY REPORT**

Combining data from The Australian Sentinel Practices Research Network (ASPREN)\*  
and the Victorian Sentinel Practitioners Influenza Network (VicSPIN)\*

No. 11, 2022 - 23rd May — 5th June 2022

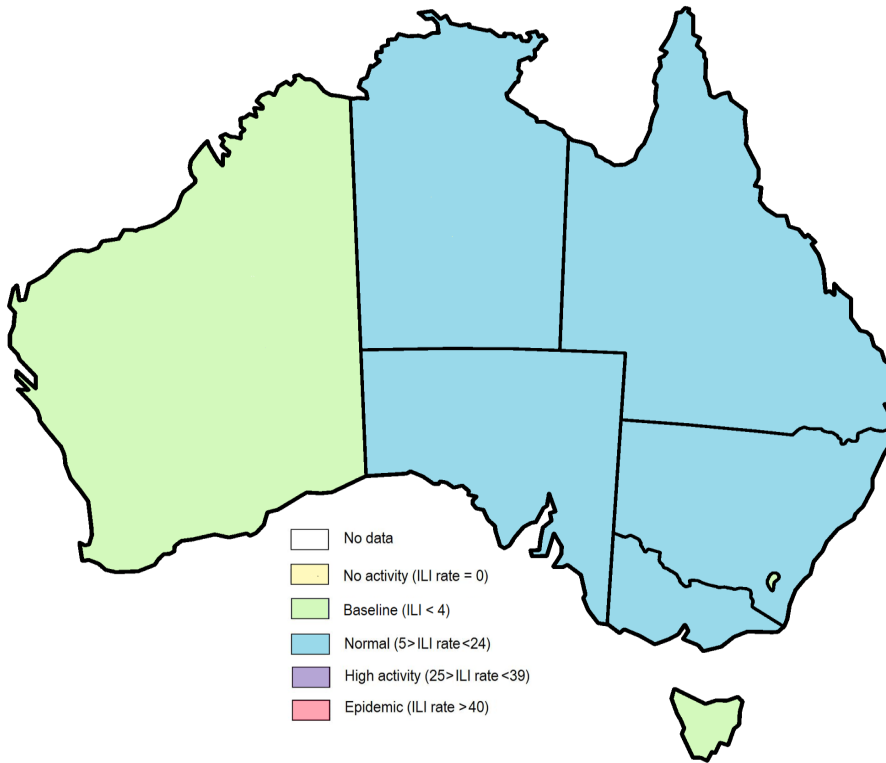


Figure 1. Map of ILI activity by jurisdiction, weeks 21 - 22, 2022.

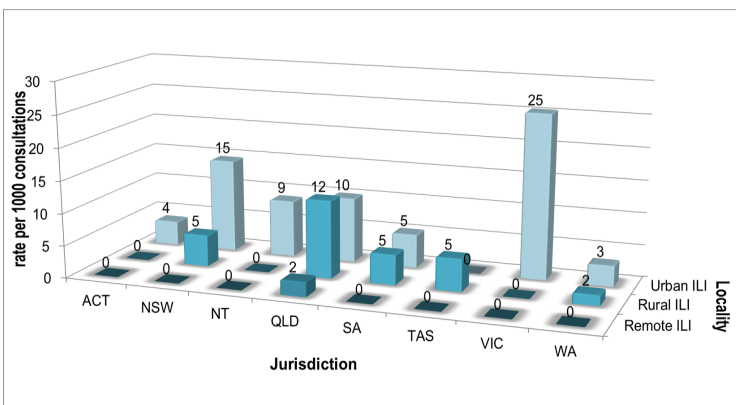


Figure 2. ASPREN rate of ILI by locality and jurisdiction, weeks 21 - 22, 2022.

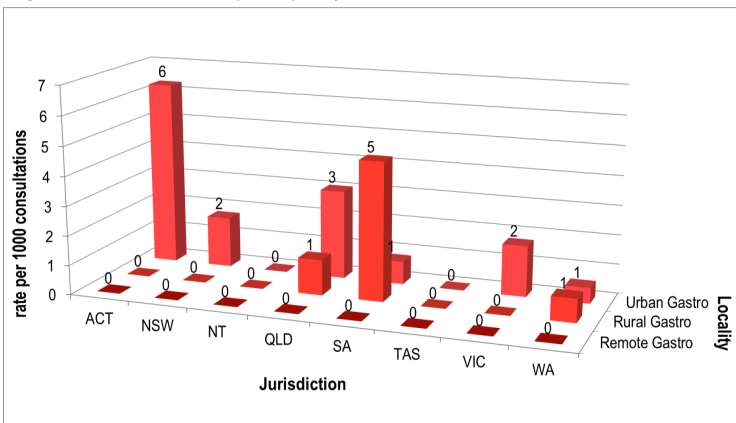


Figure 3. ASPREN rate of gastroenteritis by locality and jurisdiction, weeks 21 - 22, 2022.

**NATIONAL SUMMARY**



Influenza-like-illness levels are increasing

**34**

Case of influenza have been detected in this reporting period  
34 x Influenza A  
0 x Influenza B

**46%**

Influenza positivity during the reporting period.

**87**

Cases of influenza have been detected this year:  
87 x Influenza A  
0 x Influenza B



Gastroenteritis levels remain steady below baseline levels

**SYNDROMIC SURVEILLANCE  
REPORTING**

Reports were received from 217 reporters from 8 states and territories during the reporting period. During weeks 21 and 22 reporters saw a total of 35,685 patients.

**INFLUENZA-LIKE-ILLNESS (ILI)**

Nationally, ILI notifications significantly increased during the period with 337 notifications being reported in weeks 21–22. ILI rates reported in this period were 9 and 13 cases per 1000 consultations (weighted). This was higher than the previous fortnight where rates were 8 and 11 cases per 1000 consultations in weeks 19 and 20 respectively. For the same reporting period in 2021, ILI rates were significantly lower at 2 cases per 1000 consultations for weeks 21 and 22 (see Fig. 5).

**GASTROENTERITIS**

Nationally, gastroenteritis notifications increased to 47 notifications reported. Gastroenteritis rates reported in this period slightly increased to 1 and 2 cases per 1000 consultations in weeks 21 and 22, compared to 1 case per 1000 consultations in weeks 19 and 20 (see Fig. 5).

\* ASPREN is funded by the Commonwealth's Department of Health, Office of Health Protection, Vaccine Preventable Disease Surveillance Section.

\* VicSPIN is funded by Melbourne Health and the Victorian Infectious Diseases Reference Laboratory.

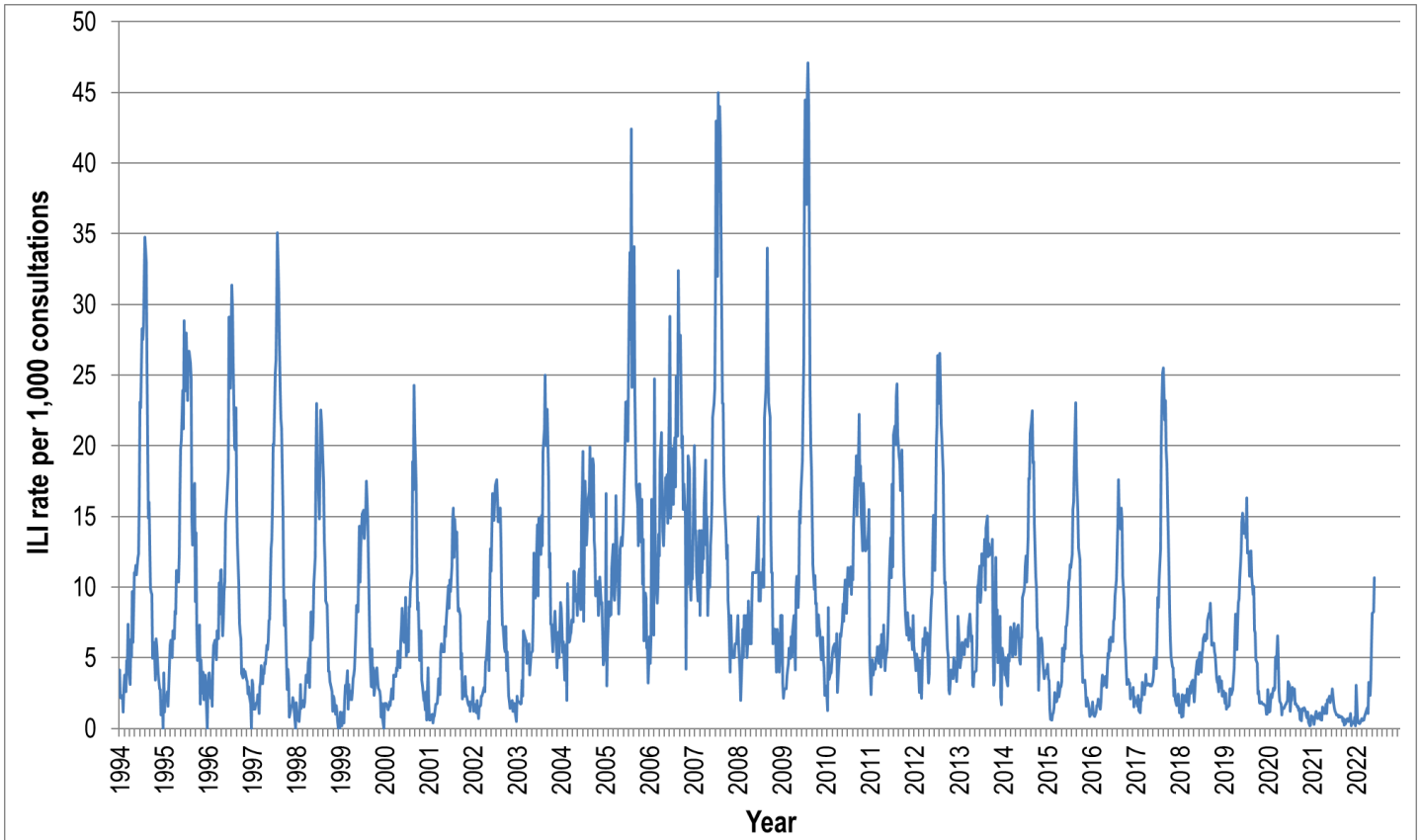


Figure 4. ASPREN ILI rates 1994 - 2022.

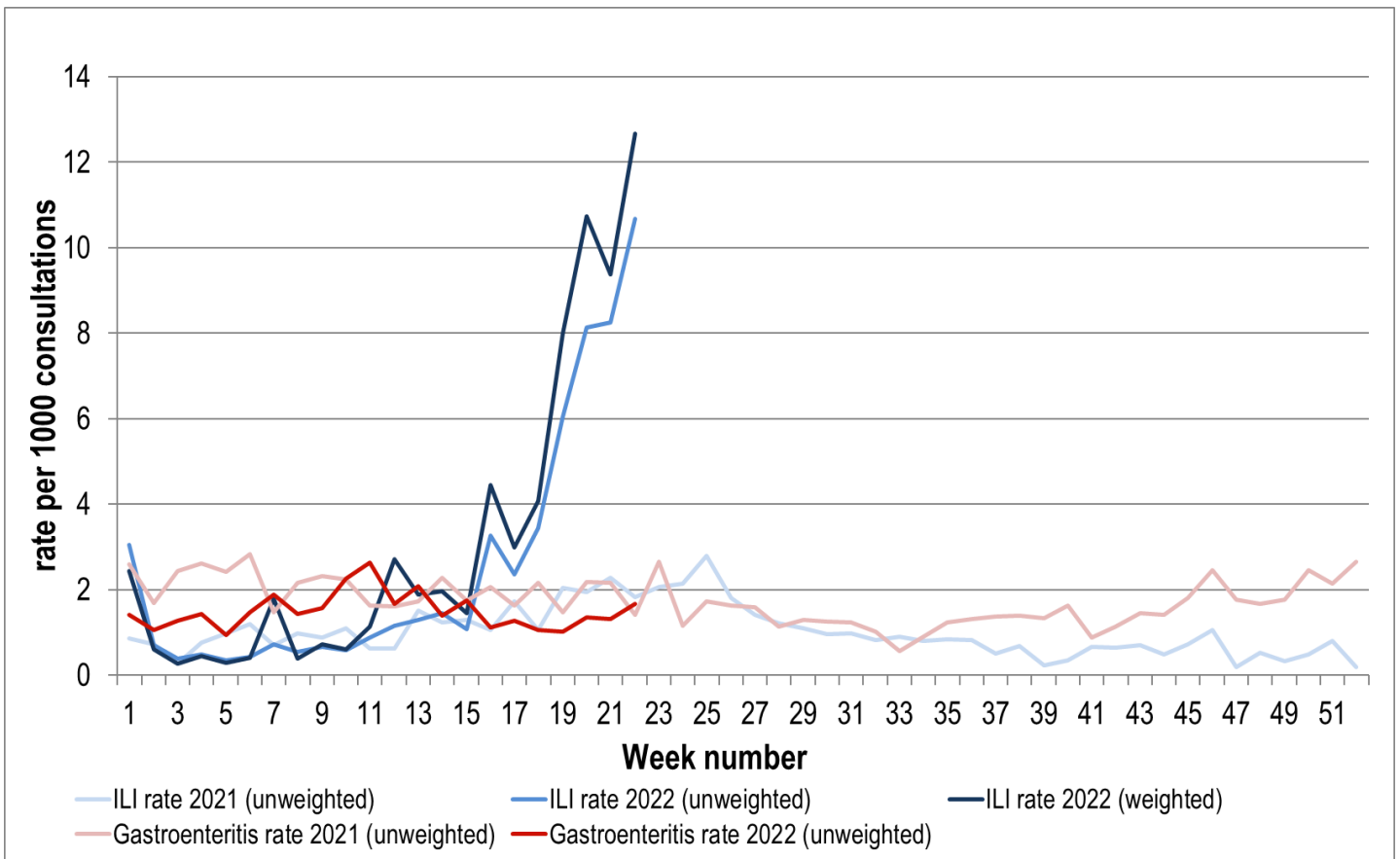


Figure 5. ASPREN + VicSPIN ILI and ASPREN gastroenteritis rates 2021-22. Weighted rates are weighted to account for population size differences between jurisdictions, using population estimates from the 2011 Australian Census.

### VIROLOGICAL SURVEILLANCE

27% of all ILI patients were swab tested during weeks 21 and 22 (see Figure 6).

34 cases of Influenza A and 6 cases of SARS-CoV-2 were detected during this period. There were 18 cases of Rhinovirus detected making it the second most common respiratory virus circulating the nation at present (see figure 8).

# Viral laboratory data are provided by SA Pathology and VicSPIN laboratories.

	Reporting Period 23 May - 5 June 2022	YTD 1 Jan - 5 June 2022
Total number of ILI notifications	337	888
Number of swab tests performed	90	306
% ILI patients tested	27%	34%
% of swab tests positive for influenza	38%	28%

Figure 6. ASPREN + VicSPIN virological surveillance results overview for 2022 #

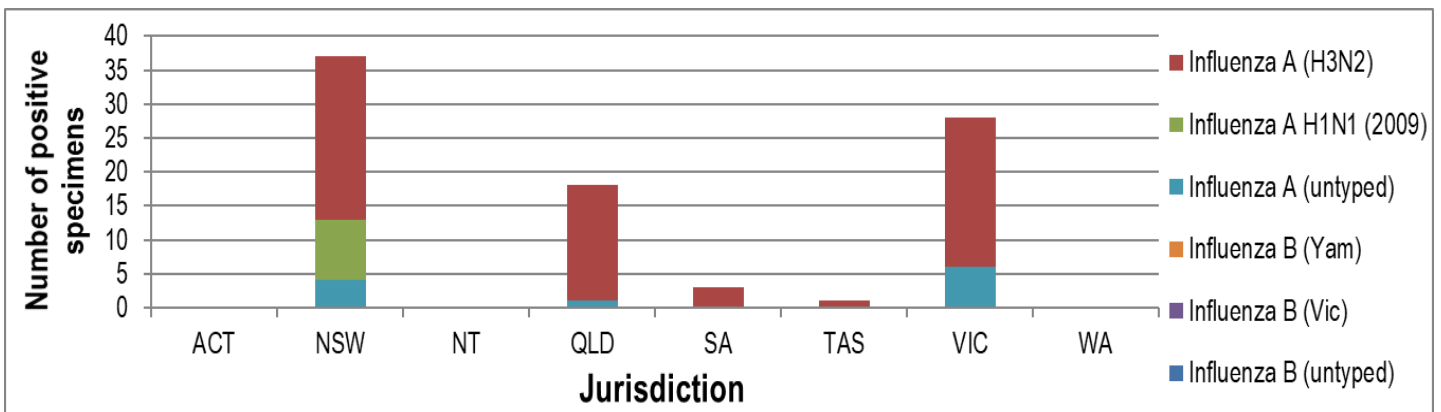


Figure 7. ASPREN + VicSPIN influenza subtype analysis by jurisdiction for 2022 #

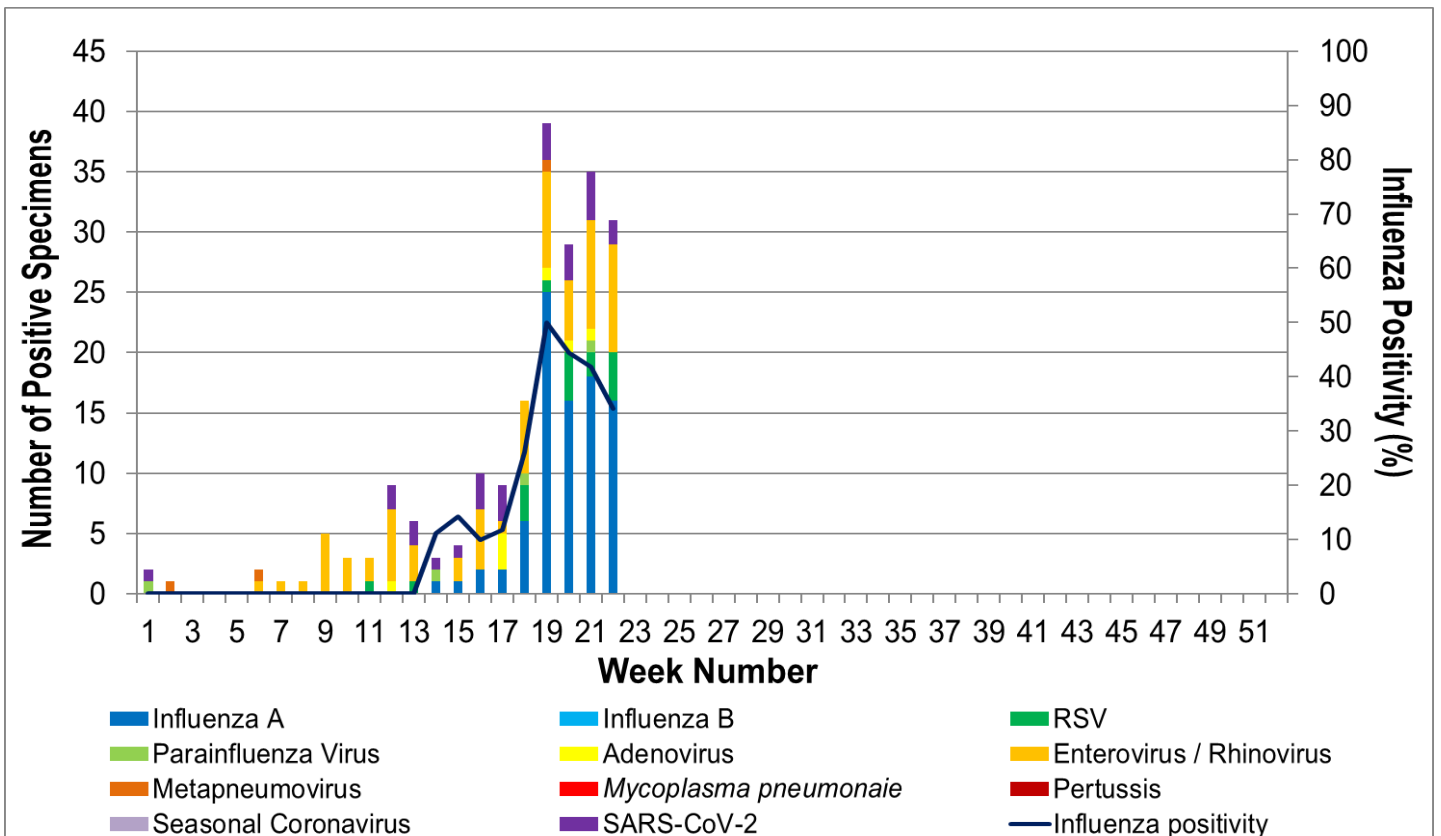


Figure 8. ASPREN, VicSPIN laboratory detection of influenza and other respiratory viruses for 2022 #