



**NATIONAL PRIMARY CARE INFECTIOUS DISEASES
SENTINEL SURVEILLANCE FORTNIGHTLY REPORT**

Combining data from The Australian Sentinel Practices Research Network (ASPREN)*
and the Victorian Sentinel Practitioners Influenza Network (VicSPIN)*

No. 09, 2022 - 25th April — 8th May 2022

NATIONAL SUMMARY

-  Influenza-like-illness levels remain steady at baseline levels
- 8** Case of influenza have been detected in this reporting period
8 x Influenza A
0 x Influenza B
- 20%** Influenza positivity during the reporting period.
- 12** Cases of influenza have been detected this year:
12 x Influenza A
0 x Influenza B
-  Gastroenteritis levels remain steady below baseline levels

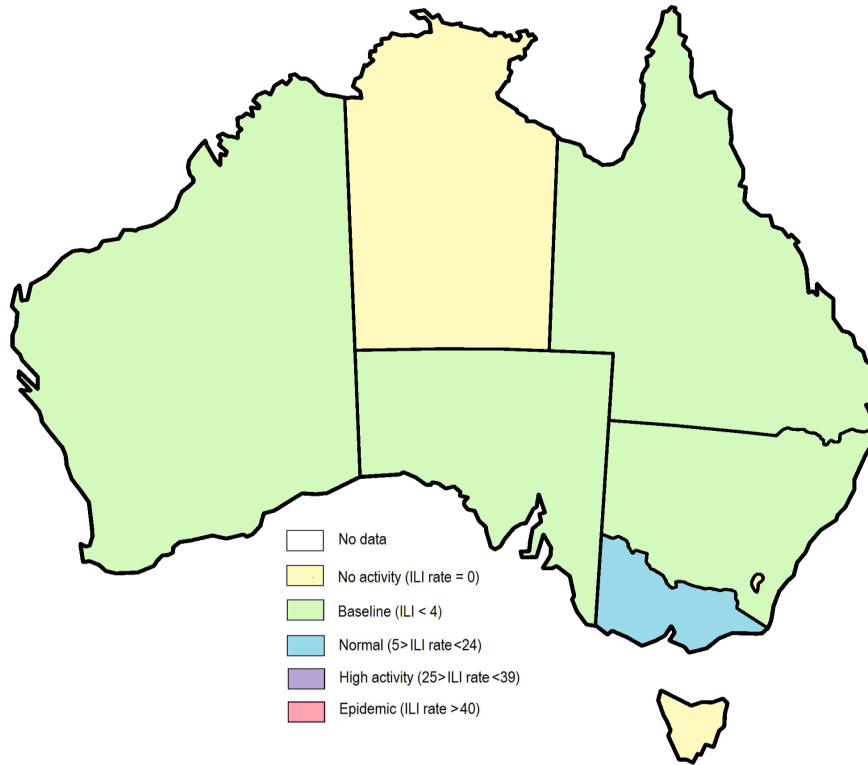


Figure 1. Map of ILI activity by jurisdiction, weeks 17 - 18, 2022.

**SYNDROMIC SURVEILLANCE
REPORTING**

Reports were received from 193 reporters from 8 states and territories during the reporting period. During weeks 17 and 18 reporters saw a total of 29,068 patients.

INFLUENZA-LIKE-ILLNESS (ILI)

Nationally, ILI notifications significantly increased during the period with 85 notifications being reported in weeks 17–18. ILI rates reported in this period were 3 and 4 cases per 1000 consultations (weighted). This was similar to the previous fortnight where rates were 2 and 5 cases per 1000 consultations in weeks 15 and 16 respectively. For the same reporting period in 2021, ILI rates were lower at 1 case per 1000 consultations for weeks 17 and 18 (see Fig. 5).

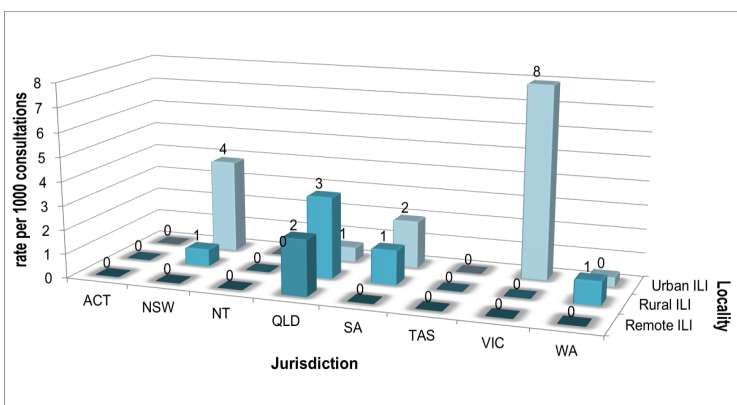


Figure 2. ASPREN rate of ILI by locality and jurisdiction, weeks 17 - 18, 2022.

GASTROENTERITIS

Nationally, gastroenteritis notifications remained steady at 30 notifications reported. Gastroenteritis rates reported in this period were slightly lower at 1 case per 1000 consultations in weeks 17 and 18, compared to 2 and 1 cases per 1000 consultations in weeks 15 and 16 respectively (see Fig. 5).

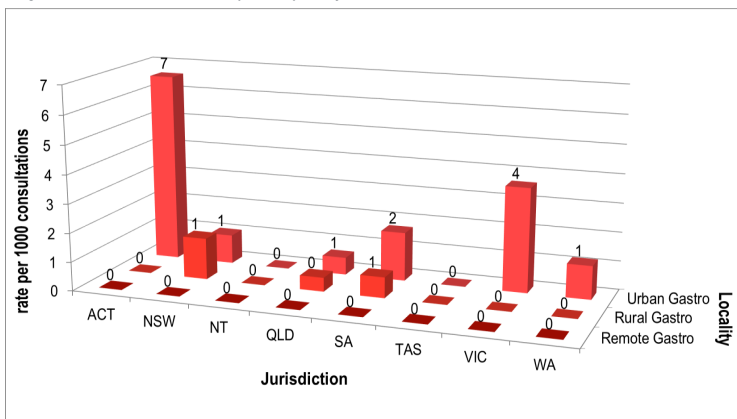


Figure 3. ASPREN rate of gastroenteritis by locality and jurisdiction, weeks 17 - 18, 2022.

* ASPREN is funded by the Commonwealth's Department of Health, Office of Health Protection, Vaccine Preventable Disease Surveillance Section.

* VicSPIN is funded by Melbourne Health and the Victorian Infectious Diseases Reference Laboratory.

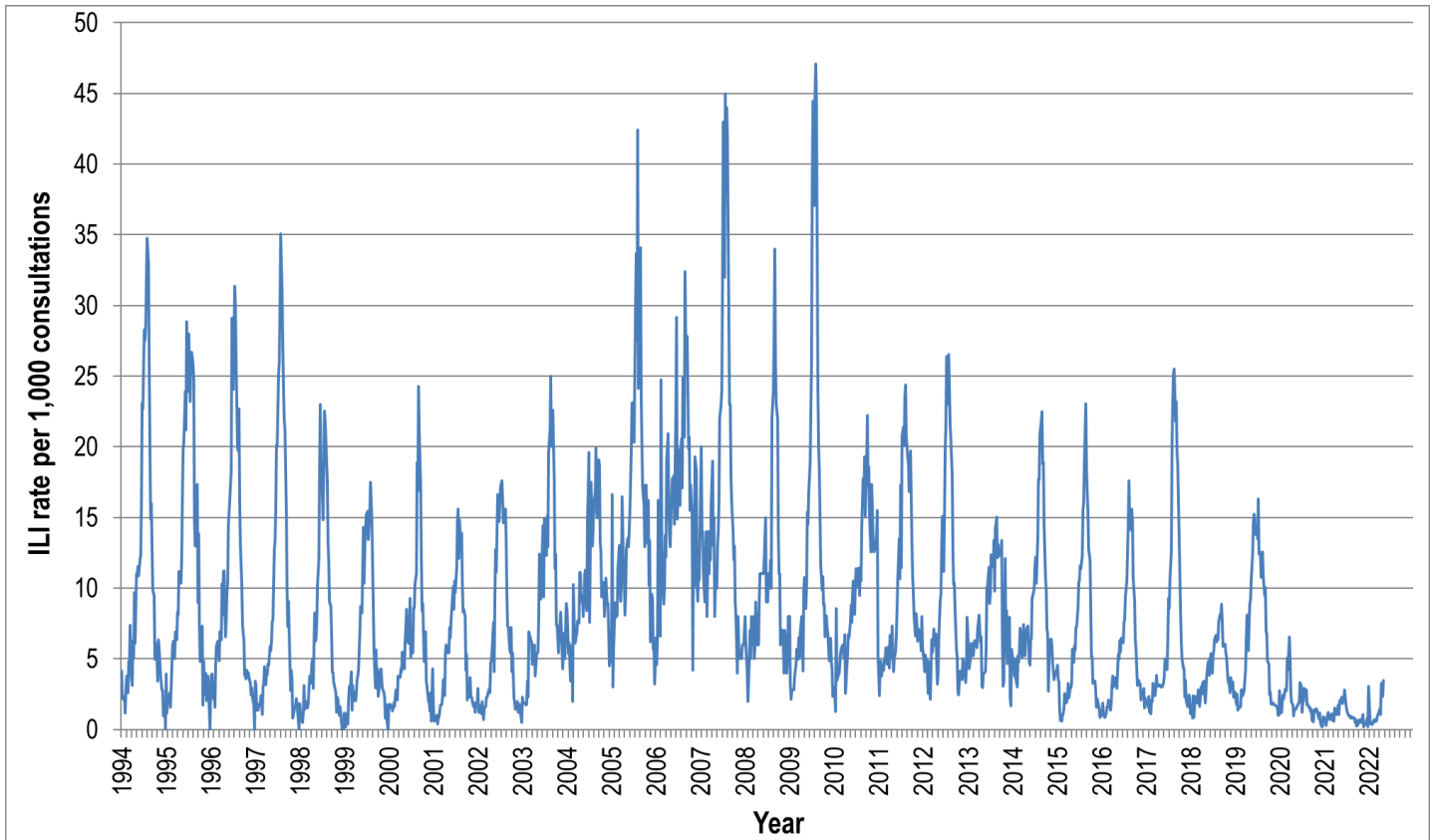


Figure 4. ASPREN ILI rates 1994 - 2022.

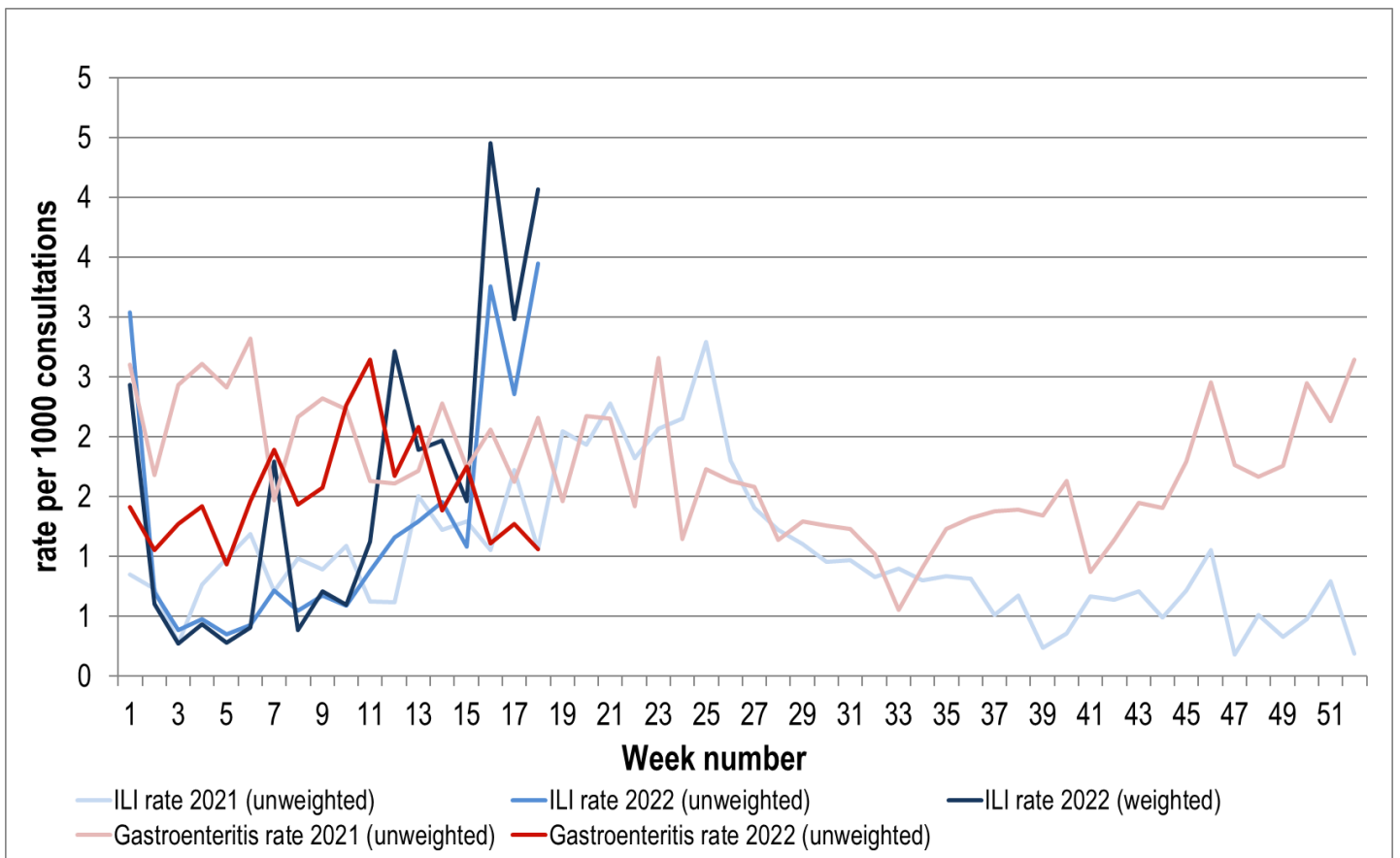


Figure 5. ASPREN + VicSPIN ILI and ASPREN gastroenteritis rates 2021-22. Weighted rates are weighted to account for population size differences between jurisdictions, using population estimates from the 2011 Australian Census.

VIROLOGICAL SURVEILLANCE

47% of all ILI patients were swab tested during weeks 17 and 18 (see Figure 6).

8 cases of Influenza A and 3 cases of SARS-CoV-2 were detected during this period. There were 7 cases of Rhinovirus detected making it the most common respiratory virus circulating the nation at present (see figure 8).

Viral laboratory data are provided by SA Pathology and VicSPIN laboratories.

	Reporting Period 25 Apr - 8 May 2022	YTD 1 Jan - 8 May 2022
Total number of ILI notifications	85	320
Number of swab tests performed	40	130
% ILI patients tested	47%	41%
% of swab tests positive for influenza	20%	9%

Figure 6. ASPREN + VicSPIN virological surveillance results overview for 2022 #

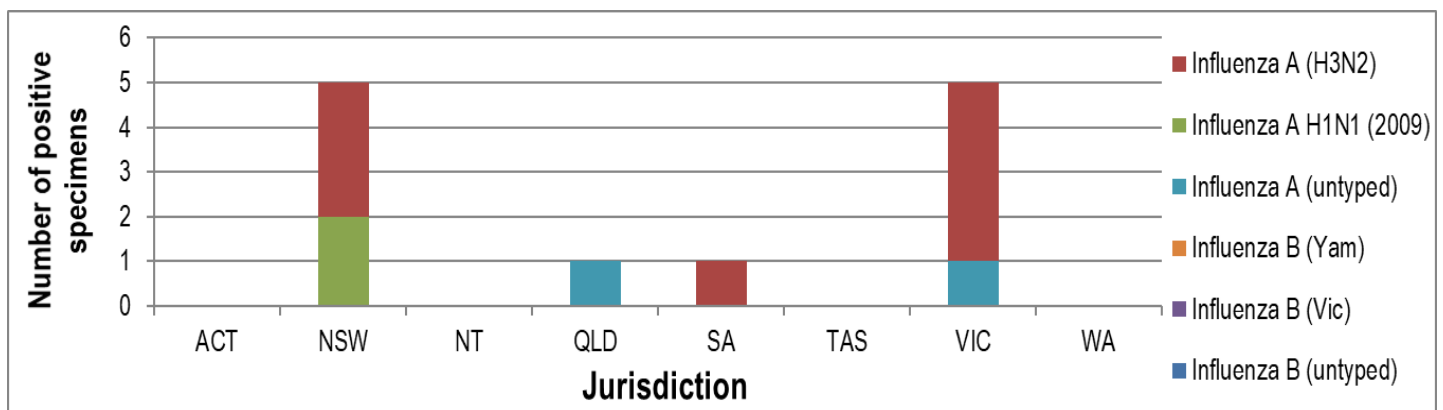


Figure 7. ASPREN + VicSPIN influenza subtype analysis by jurisdiction for 2022 #

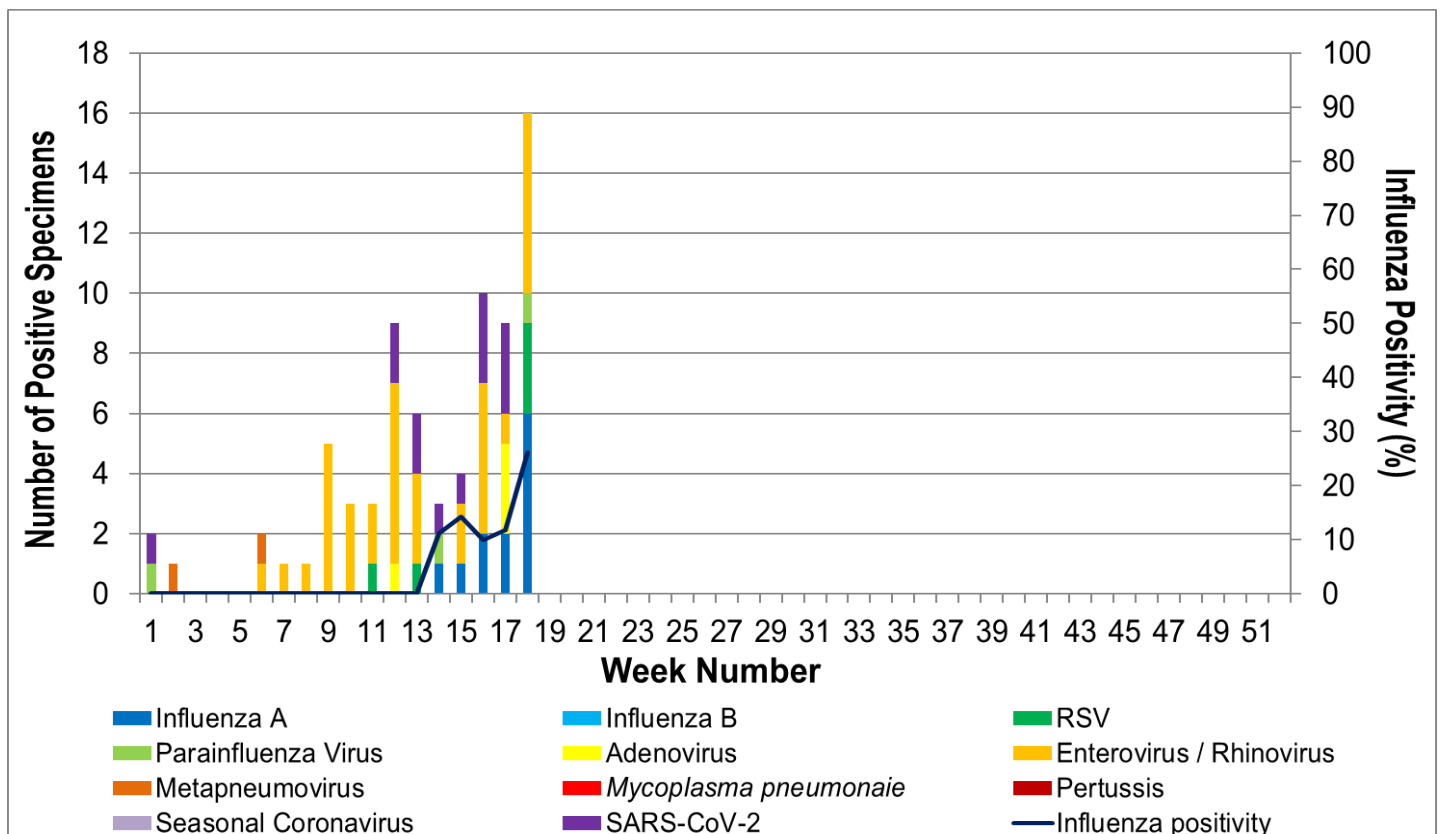


Figure 8. ASPREN, VicSPIN laboratory detection of influenza and other respiratory viruses for 2022 #

The Australian Sentinel Practices Research Network is supported by the Australian Government Department of Health (the Department). The opinions expressed in this paper are those of the authors, and do not necessarily represent the views of the Department.

Please note: This report is based on data available as at 19 May 2022. Delays in the reporting of data may cause data to change retrospectively.