

## NATIONAL PRIMARY CARE INFECTIOUS DISEASES SENTINEL SURVEILLANCE FORTNIGHTLY REPORT

Combining data from The Australian Sentinel Practices Research Network (ASPREN)\*  
and the Victorian Sentinel Practitioners Influenza Network (VicSPIN)\*

No. 05, 2022 - 28th February — 13th March 2022

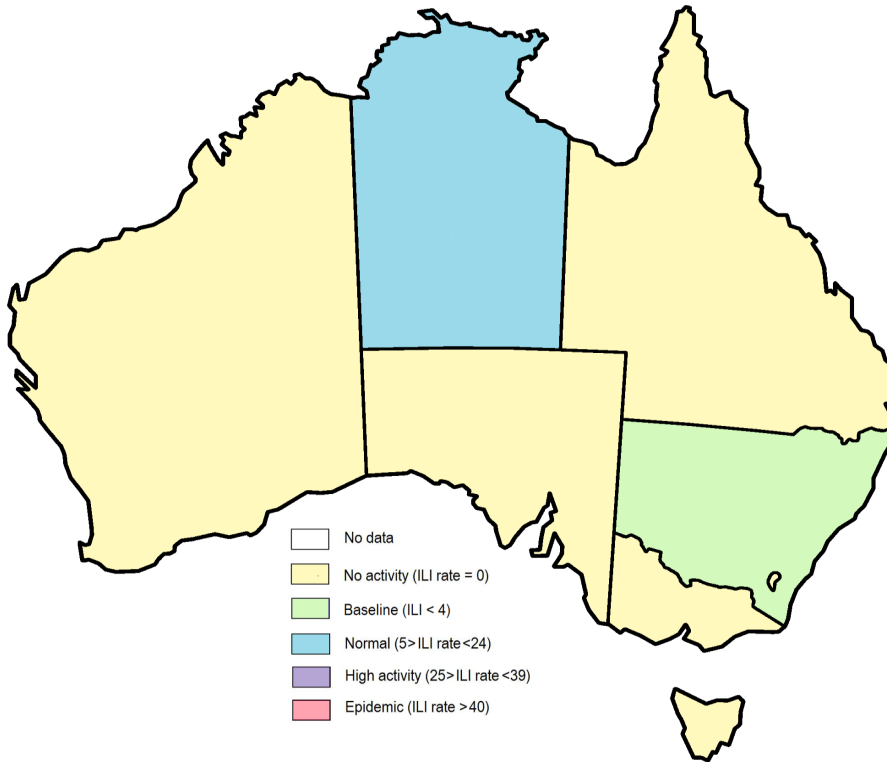


Figure 1. Map of ILI activity by jurisdiction, weeks 09 - 10, 2022.

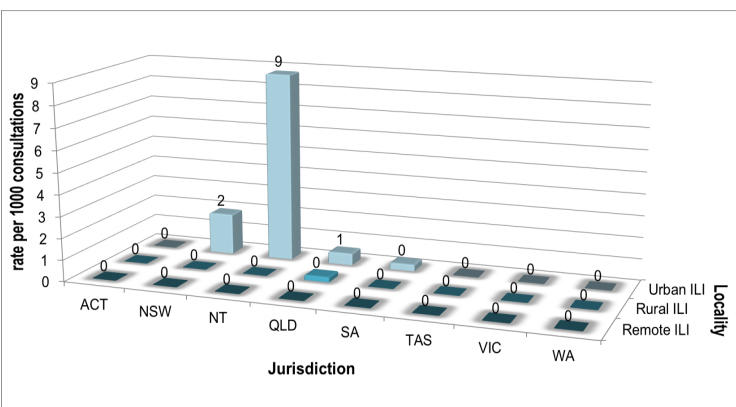


Figure 2. ASPREN rate of ILI by locality and jurisdiction, weeks 09 - 10, 2022.

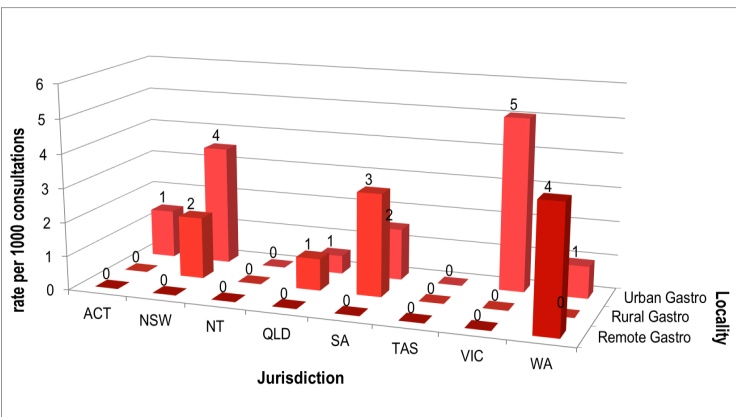



Figure 3. ASPREN rate of gastroenteritis by locality and jurisdiction, weeks 09 - 10, 2022.

### NATIONAL SUMMARY

 Influenza-like-illness levels remain steady below baseline levels

0


Case of influenza have been detected in this reporting period  
0 x Influenza A  
0 x Influenza B

0%

Influenza positivity during the reporting period.

0

Cases of influenza have been detected this year:  
0 x Influenza A  
0 x Influenza B

 Gastroenteritis levels remain steady below baseline levels

### SYNDROMIC SURVEILLANCE REPORTING

Reports were received from 178 reporters from 8 states and territories during the reporting period. During weeks 9 and 10 reporters saw a total of 27,102 patients.

### INFLUENZA-LIKE-ILLNESS (ILI)

Nationally, ILI notifications remained steady during the period with 17 notifications being reported in weeks 9–10. ILI rates reported in this period were 1 case per 1000 consultations (weighted). This was slightly lower than the previous fortnight where rates were 2 and 1 cases per 1000 consultations in weeks 7 and 8 respectively. For the same reporting period in 2021, ILI rates were slightly higher at 1 and 2 cases per 1000 consultations for weeks 9 and 10 respectively (see Fig. 5).

### GASTROENTERITIS

Nationally, gastroenteritis notifications remained steady over the period with 52 notifications reported. Gastroenteritis rates reported in this period were similar at 2 cases per 1000 consultations in both weeks 9 and 10, compared to 2 and 1 cases per 1000 consultations in weeks 7 and 8 respectively (see Fig. 5).

\* ASPREN is funded by the Commonwealth's Department of Health, Office of Health Protection, Vaccine Preventable Disease Surveillance Section.

\* VicSPIN is funded by Melbourne Health and the Victorian Infectious Diseases Reference Laboratory.

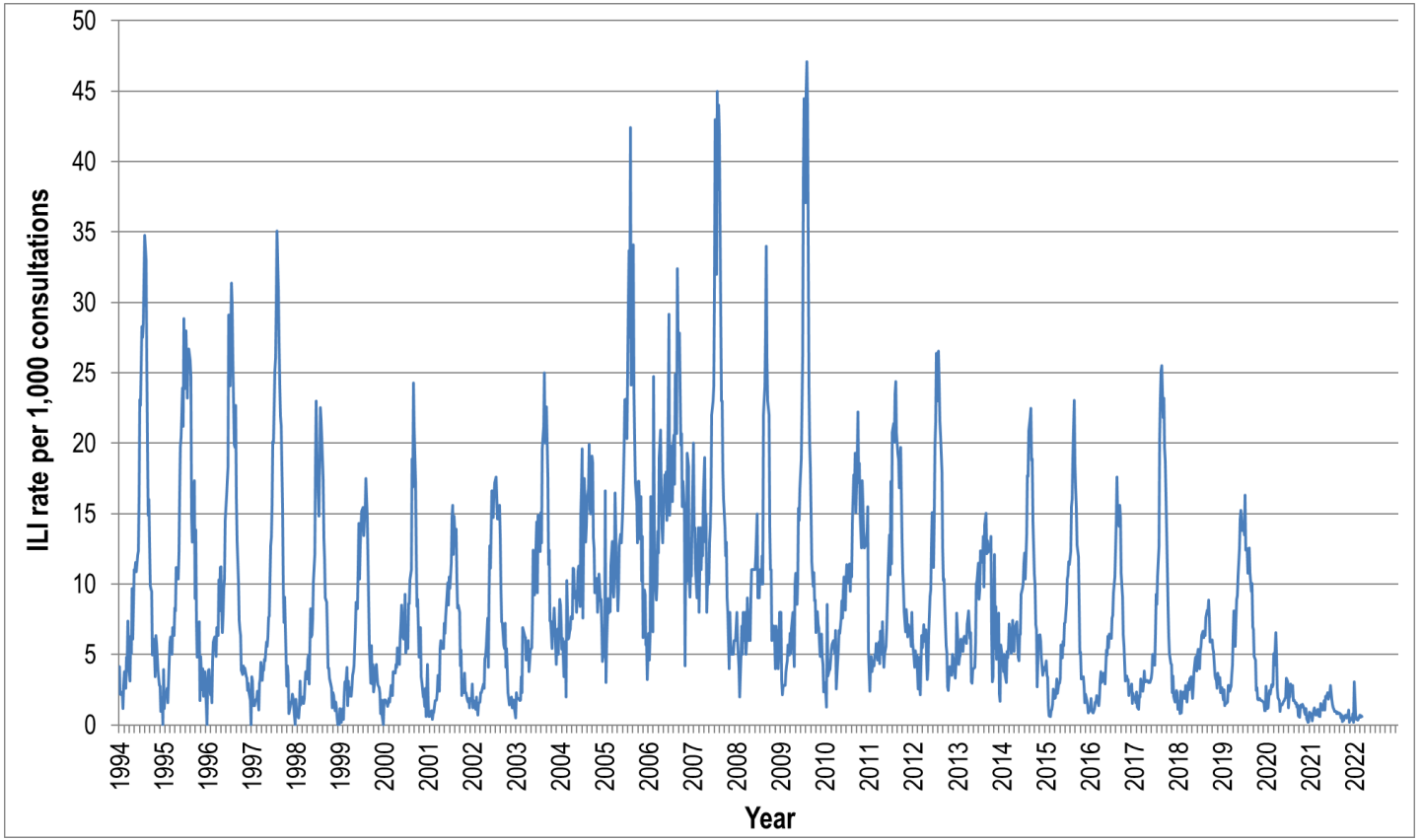


Figure 4. ASPREN ILI rates 1994 - 2022.

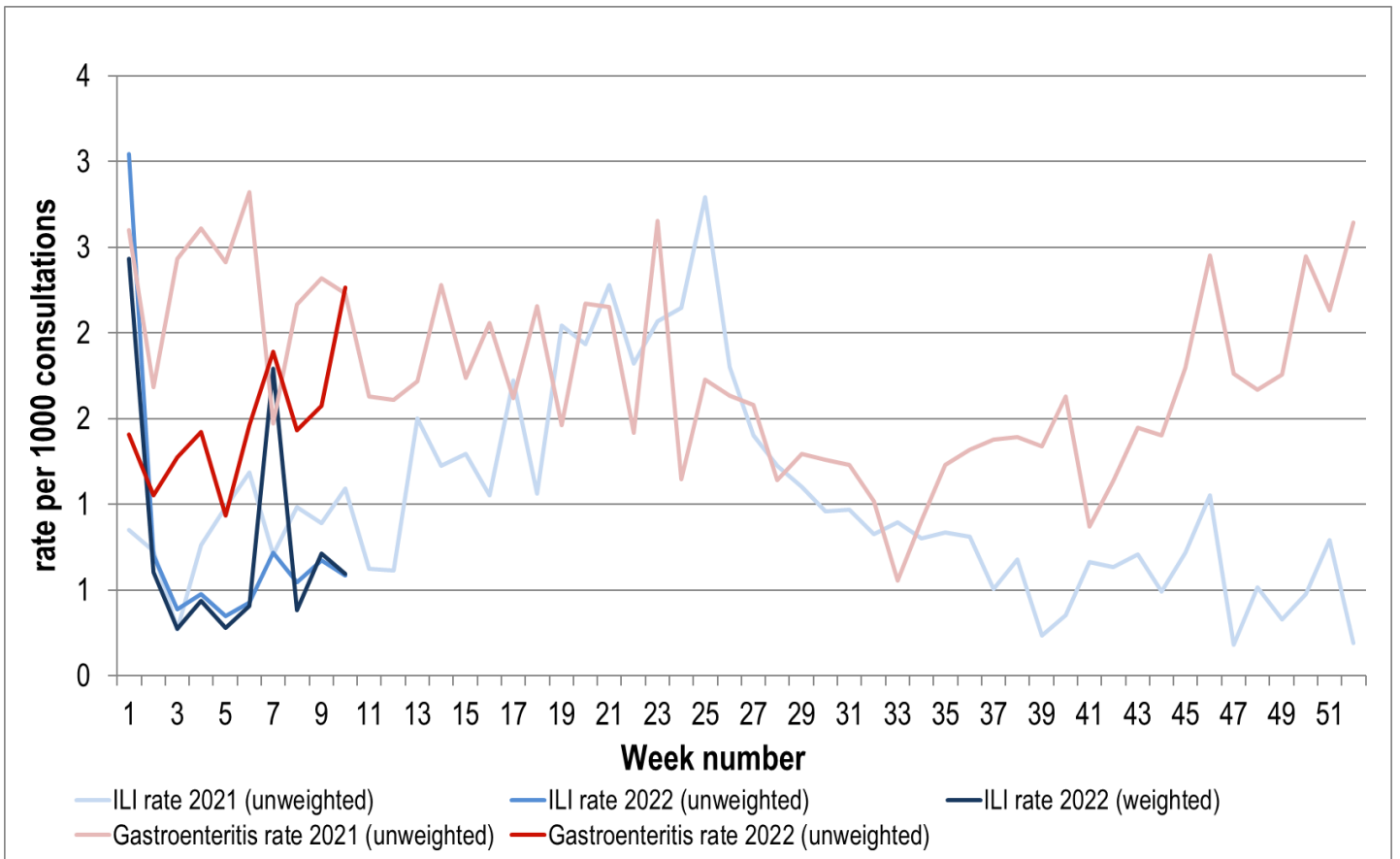


Figure 5. ASPREN + VicSPIN ILI and ASPREN gastroenteritis rates 2021-22. Weighted rates are weighted to account for population size differences between jurisdictions, using population estimates from the 2011 Australian Census.

### VIROLOGICAL SURVEILLANCE

71% of all ILI patients were swab tested during weeks 9 and 10 (see Figure 6).

No cases of Influenza were detected during this period. There were 8 cases of Rhinovirus detected making it the most common respiratory virus circulating the nation at present (see figure 8).

# Viral laboratory data are provided by SA Pathology and VicSPIN laboratories.

	Reporting Period 28 Feb - 13 Mar 2022	YTD 1 Jan - 13 Mar 2022
Total number of ILI notifications	17	116
Number of swab tests performed	12	29
% ILI patients tested	71%	25%
% of swab tests positive for influenza	0%	0%

Figure 6. ASPREN + VicSPIN virological surveillance results overview for 2022 #

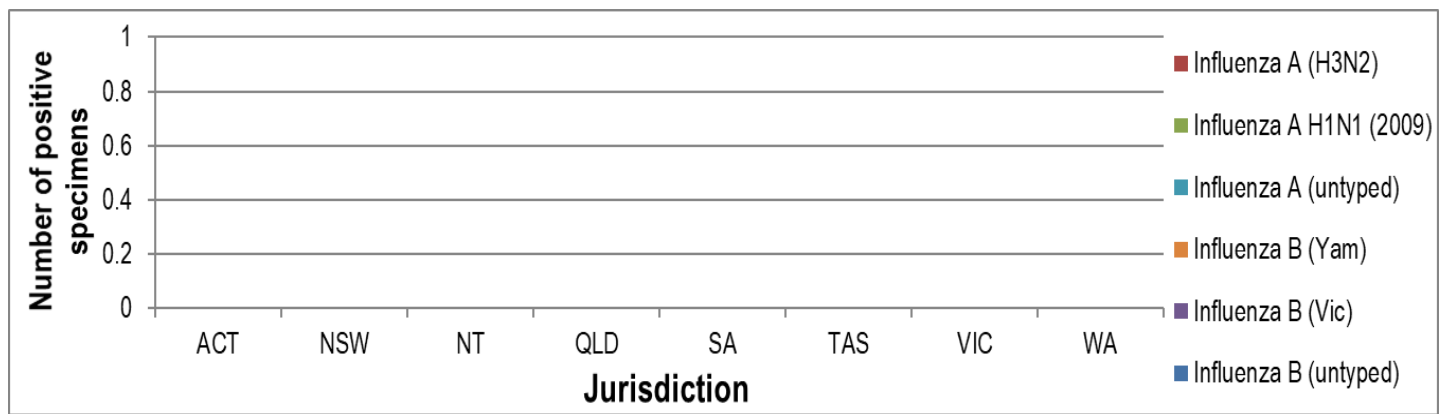


Figure 7. ASPREN + VicSPIN influenza subtype analysis by jurisdiction for 2022 #

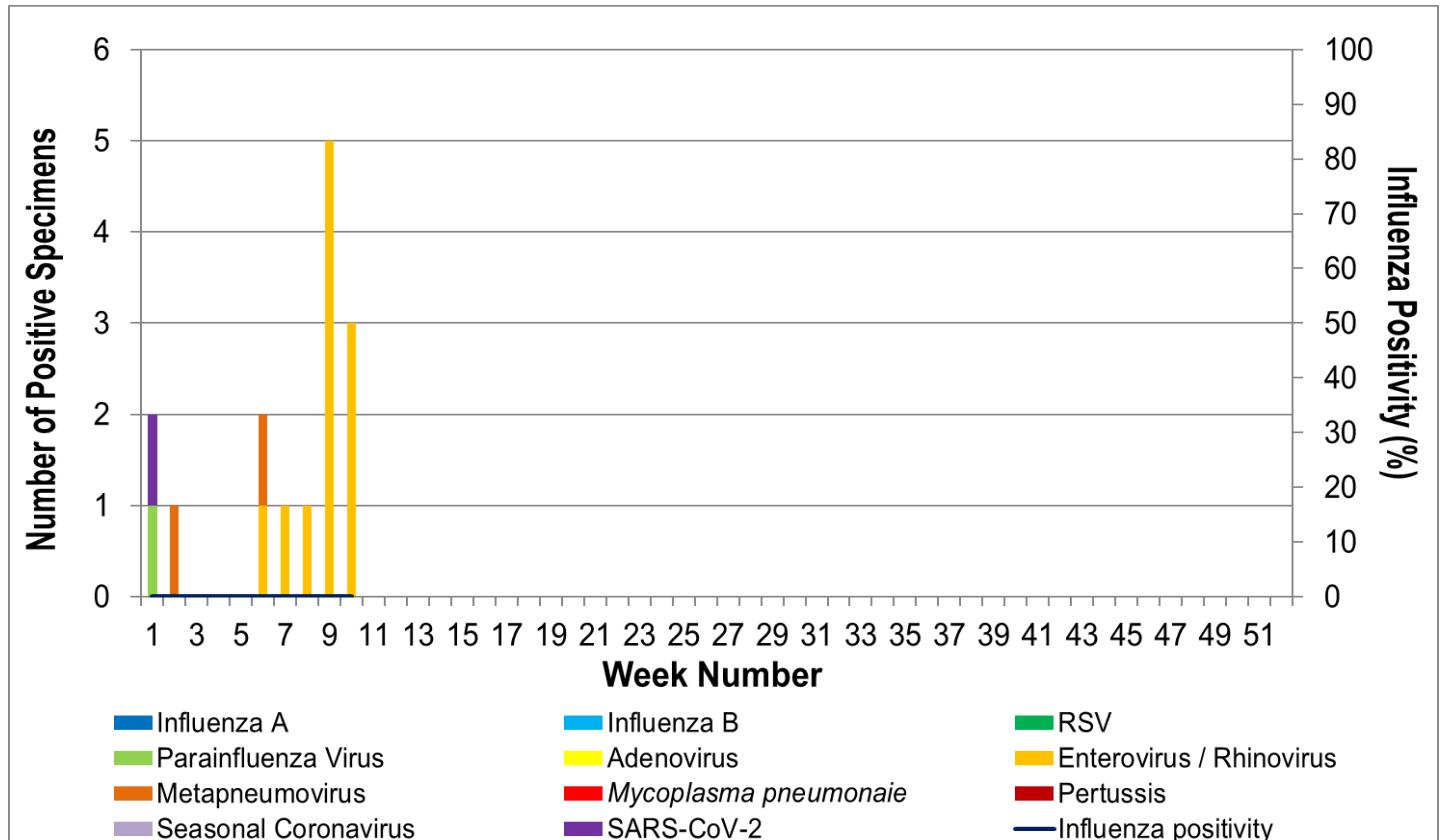


Figure 8. ASPREN, VicSPIN laboratory detection of influenza and other respiratory viruses for 2022 #

The Australian Sentinel Practices Research Network is supported by the Australian Government Department of Health (the Department). The opinions expressed in this paper are those of the authors, and do not necessarily represent the views of the Department.