

**NATIONAL PRIMARY CARE INFECTIOUS DISEASES
SENTINEL SURVEILLANCE FORTNIGHTLY REPORT**

Combining data from The Australian Sentinel Practices Research Network (ASPREN)* and the Victorian Sentinel Practitioners Influenza Network (VicSPIN)*

No. 23, 2022 - 7th November — 20th November 2022

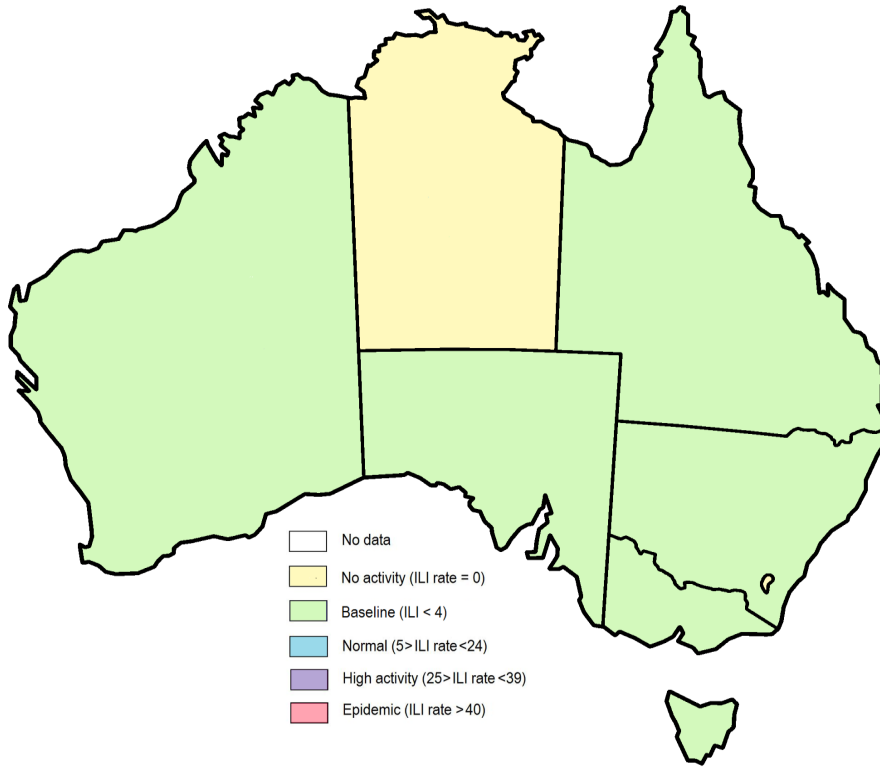


Figure 1. Map of ILI activity by jurisdiction, weeks 45 - 46, 2022.

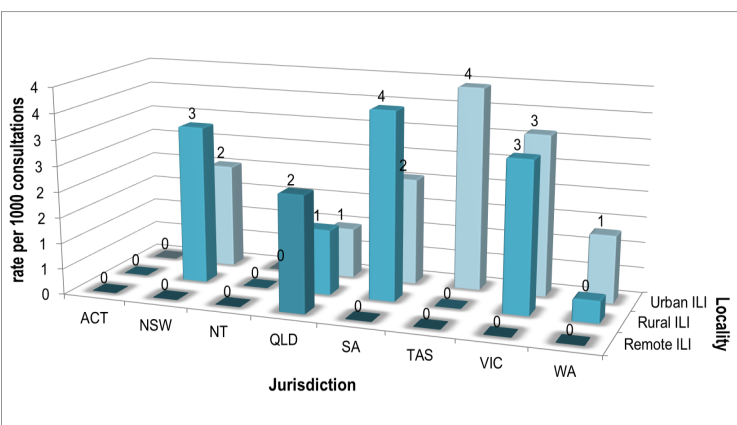


Figure 2. ASPREN rate of ILI by locality and jurisdiction, weeks 45 - 46, 2022.

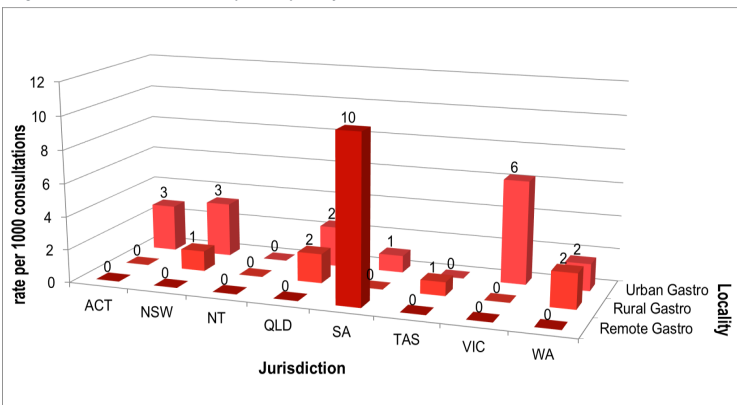


Figure 3. ASPREN rate of gastroenteritis by locality and jurisdiction, weeks 45 - 46, 2022.

NATIONAL SUMMARY

0 Influenza-like-illness levels remain steady below baseline levels

0 Case of influenza have been detected in this reporting period
0 x Influenza A
0 x Influenza B

0% Influenza positivity during the reporting period.

161 Cases of influenza have been detected this year:
161 x Influenza A
0 x Influenza B

0 Gastroenteritis levels remain steady below baseline levels

**SYNDROMIC SURVEILLANCE
REPORTING**

Reports were received from 206 reporters from 8 states and territories during the reporting period. During weeks 45 and 46 reporters saw a total of 32,536 patients.

INFLUENZA-LIKE-ILLNESS (ILI)

Nationally, ILI notifications slightly decreased during the period with 66 notifications being reported in weeks 45—46. ILI rates reported in this period were 3 and 2 cases per 1000 consultations (weighted). This was similar to the previous fortnight where rates were 3 and 2 cases per 1000 consultations in weeks 43 and 44 respectively. For the same reporting period in 2021, ILI rates were significantly lower at 1 case per 1000 consultations for weeks 45 and 46 (see Fig. 5).

GASTROENTERITIS

Nationally, gastroenteritis notifications decreased during the period with 56 notifications reported. Gastroenteritis rates reported in this period remained steady at 2 cases per 1000 consultations in weeks 45 and 46, compared to 2 cases per 1000 consultations in weeks 43 and 44 respectively (see Fig. 5).

* ASPREN is funded by the Commonwealth's Department of Health, Office of Health Protection, Vaccine Preventable Disease Surveillance Section.

* VicSPIN is funded by Melbourne Health and the Victorian Infectious Diseases Reference Laboratory.

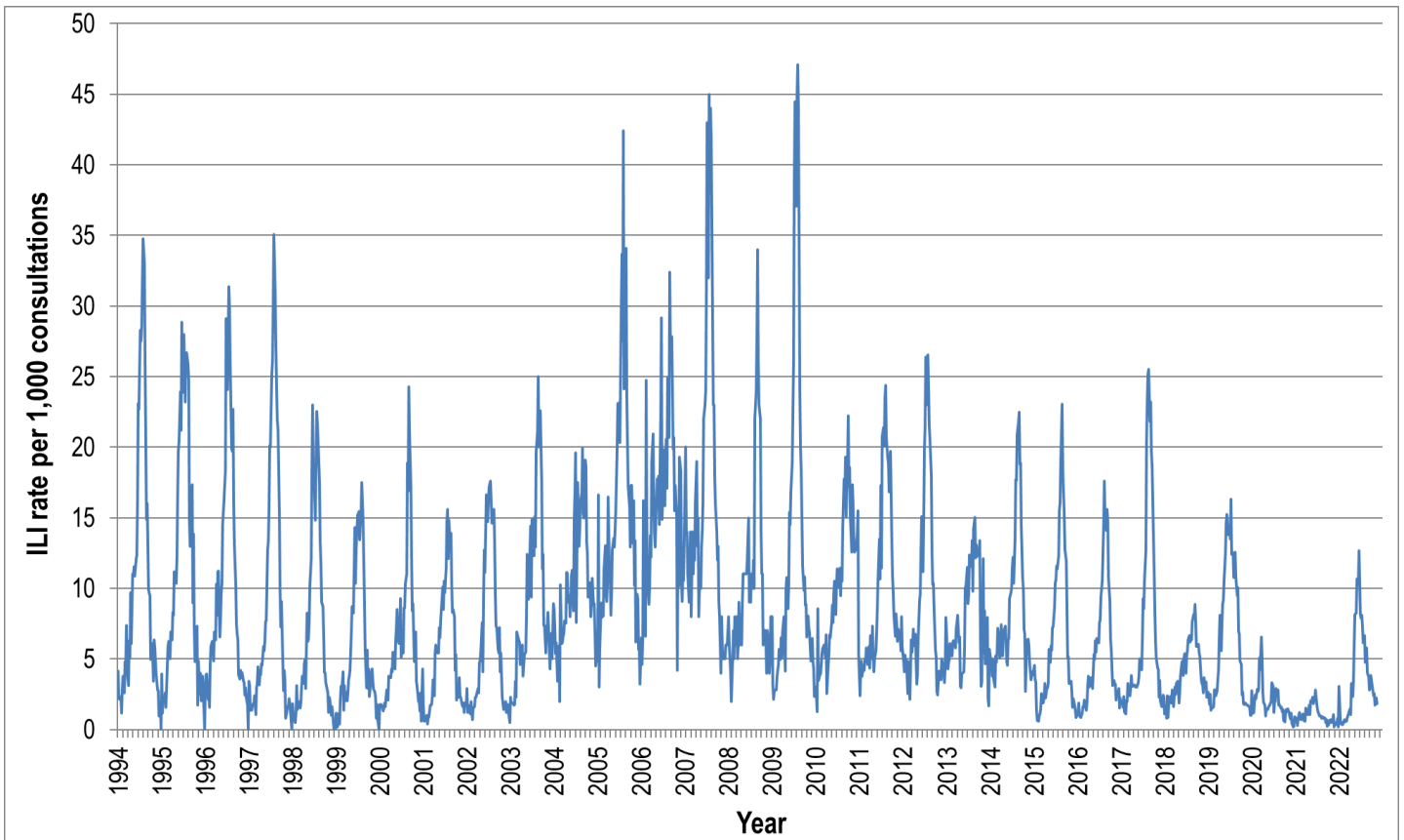


Figure 4. ASPREN ILI rates 1994 - 2022.

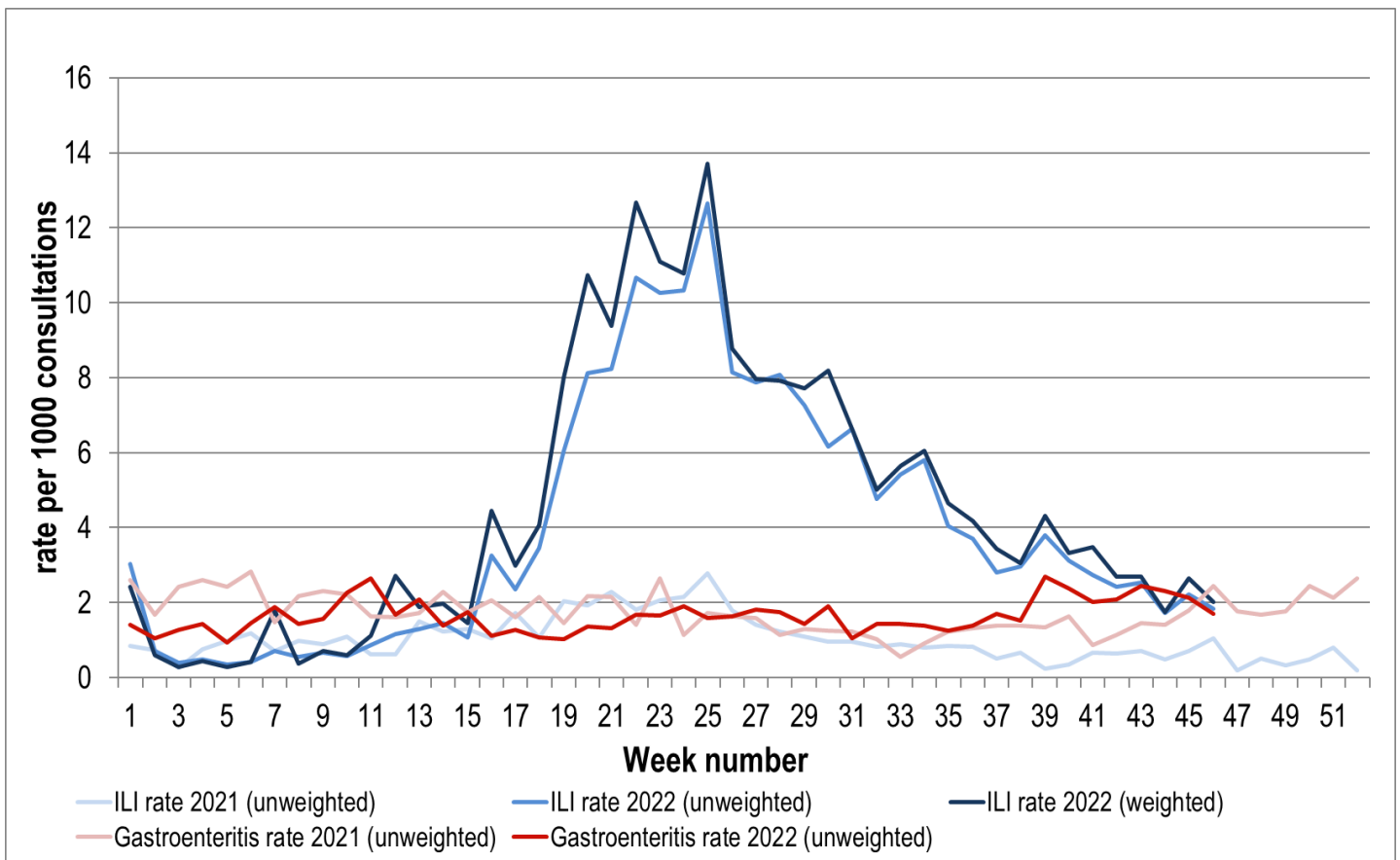


Figure 5. ASPREN + VicSPIN ILI and ASPREN gastroenteritis rates 2021-22. Weighted rates are weighted to account for population size differences between jurisdictions, using population estimates from the 2011 Australian Census.

VIROLOGICAL SURVEILLANCE

35% of all ILI patients were swab tested during weeks 45 and 46 (see Figure 6).

No cases of Influenza A and 3 cases of SARS-CoV-2 were detected during this period. There were 10 cases of Rhinovirus detected making it the most common respiratory virus circulating the nation at present (see figure 8).

Viral laboratory data are provided by SA Pathology and VicSPIN laboratories.

	Reporting Period	YTD
	7 Nov - 20 Nov 2022	1 Jan - 20 Nov 2022
Total number of ILI notifications	66	2972
Number of swab tests performed	23	988
% ILI patients tested	35%	33%
% of swab tests positive for influenza	0%	16%

Figure 6. ASPREN + VicSPIN virological surveillance results overview for 2022 #

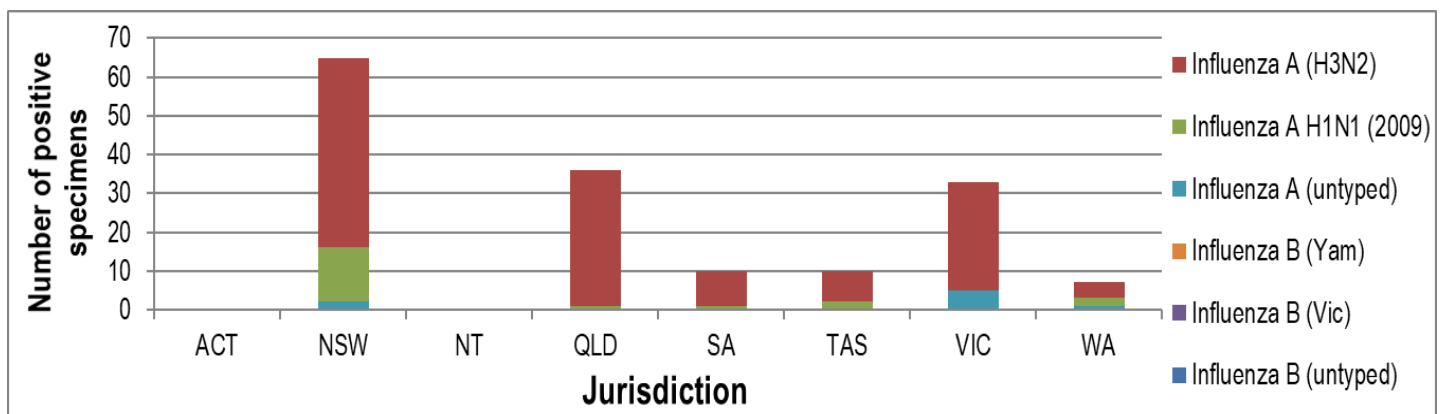


Figure 7. ASPREN + VicSPIN influenza subtype analysis by jurisdiction for 2022 #

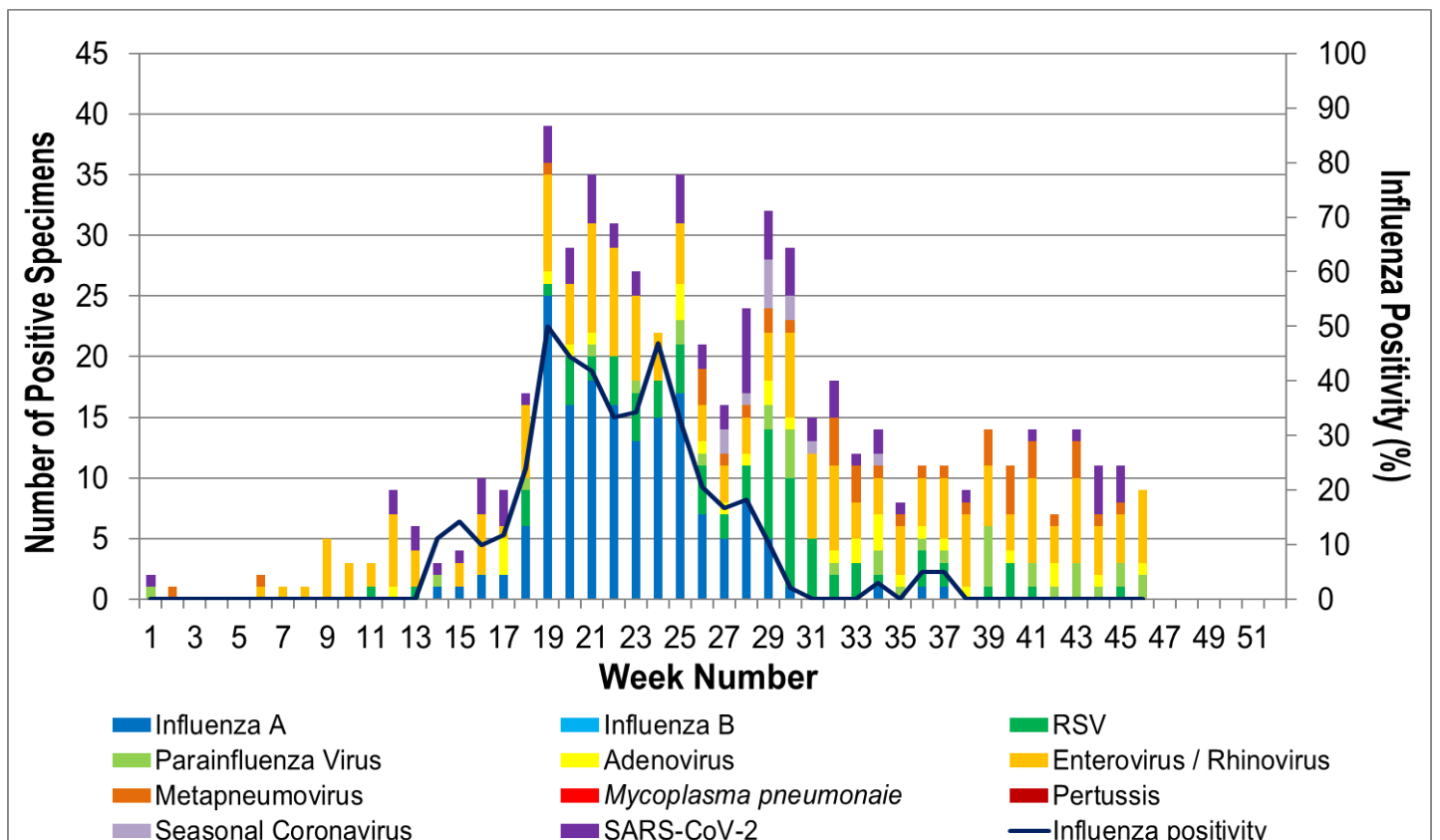


Figure 8. ASPREN, VicSPIN laboratory detection of influenza and other respiratory viruses for 2022 #

The Australian Sentinel Practices Research Network is supported by the Australian Government Department of Health (the Department). The opinions expressed in this paper are those of the authors, and do not necessarily represent the views of the Department.

Please note: This report is based on data available as at 1 December 2022. Delays in the reporting of data may cause data to change retrospectively.