

**NATIONAL PRIMARY CARE INFECTIOUS DISEASES
SENTINEL SURVEILLANCE FORTNIGHTLY REPORT**

Combining data from The Australian Sentinel Practices Research Network (ASPREN)*
and the Victorian Sentinel Practitioners Influenza Network (VicSPIN)*

No. 22, 2022 - 24th October — 6th November 2022

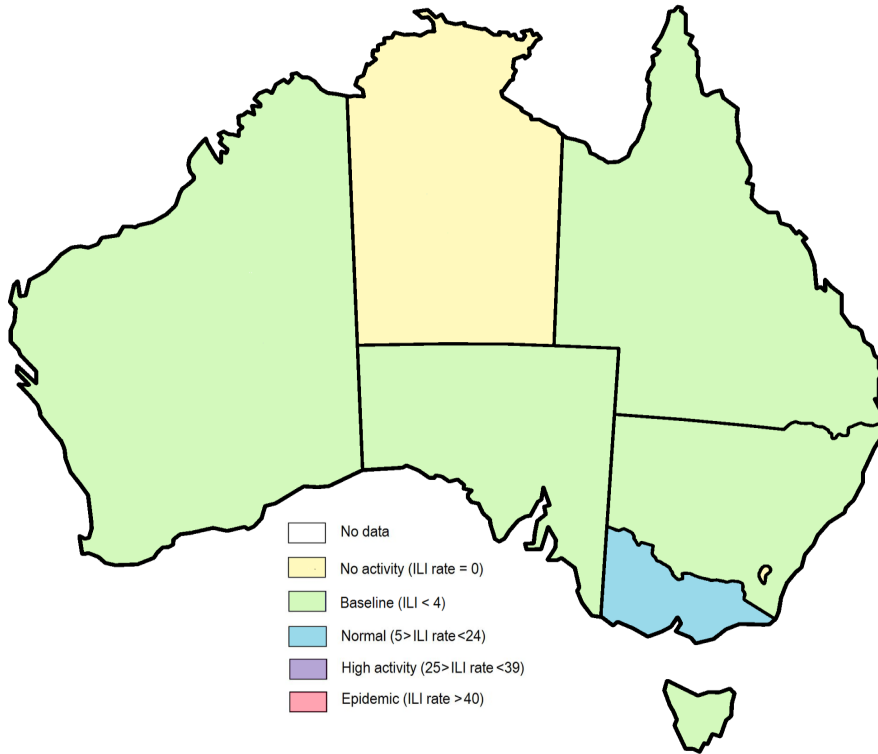


Figure 1. Map of ILI activity by jurisdiction, weeks 43 - 44, 2022.

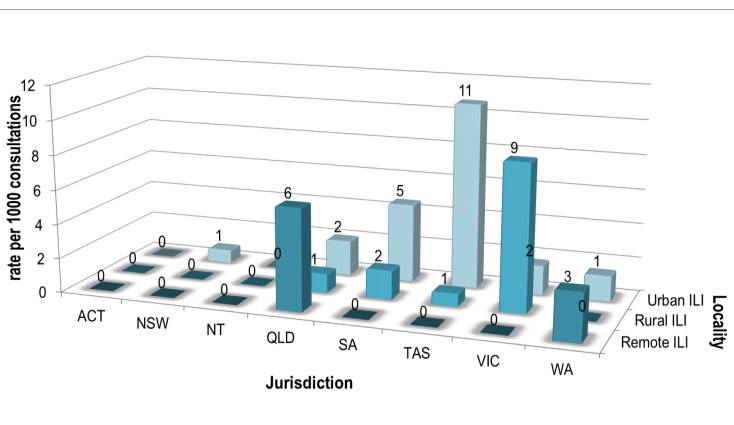


Figure 2. ASPREN rate of ILI by locality and jurisdiction, weeks 43 - 44, 2022.

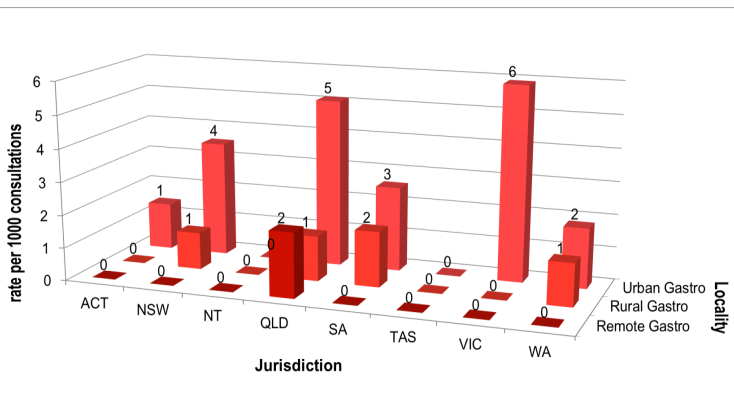


Figure 3. ASPREN rate of gastroenteritis by locality and jurisdiction, weeks 43 - 44, 2022.

NATIONAL SUMMARY

0 Influenza-like-illness levels remain steady below baseline levels

0 Case of influenza have been detected in this reporting period
0 x Influenza A
0 x Influenza B

0% Influenza positivity during the reporting period.

161 Cases of influenza have been detected this year:
161 x Influenza A
0 x Influenza B

0 Gastroenteritis levels remain steady below baseline levels

**SYNDROMIC SURVEILLANCE
REPORTING**

Reports were received from 213 reporters from 8 states and territories during the reporting period. During weeks 43 and 44 reporters saw a total of 31,887 patients.

INFLUENZA-LIKE-ILLNESS (ILI)

Nationally, ILI notifications decreased during the period with 68 notifications being reported in weeks 43–44. ILI rates reported in this period were 3 and 2 cases per 1000 consultations (weighted). This was slightly less than the previous fortnight where rates were 3 cases per 1000 consultations in weeks 41 and 42 respectively. For the same reporting period in 2021, ILI rates were significantly lower at 1 case per 1000 consultations for weeks 43 and 44 (see Fig. 5).

GASTROENTERITIS

Nationally, gastroenteritis notifications increased during the period with 68 notifications reported. Gastroenteritis rates reported in this period remained steady at 2 cases per 1000 consultations in weeks 43 and 44, compared to 2 cases per 1000 consultations in weeks 41 and 42 respectively (see Fig. 5).

* ASPREN is funded by the Commonwealth's Department of Health, Office of Health Protection, Vaccine Preventable Disease Surveillance Section.

* VicSPIN is funded by Melbourne Health and the Victorian Infectious Diseases Reference Laboratory.

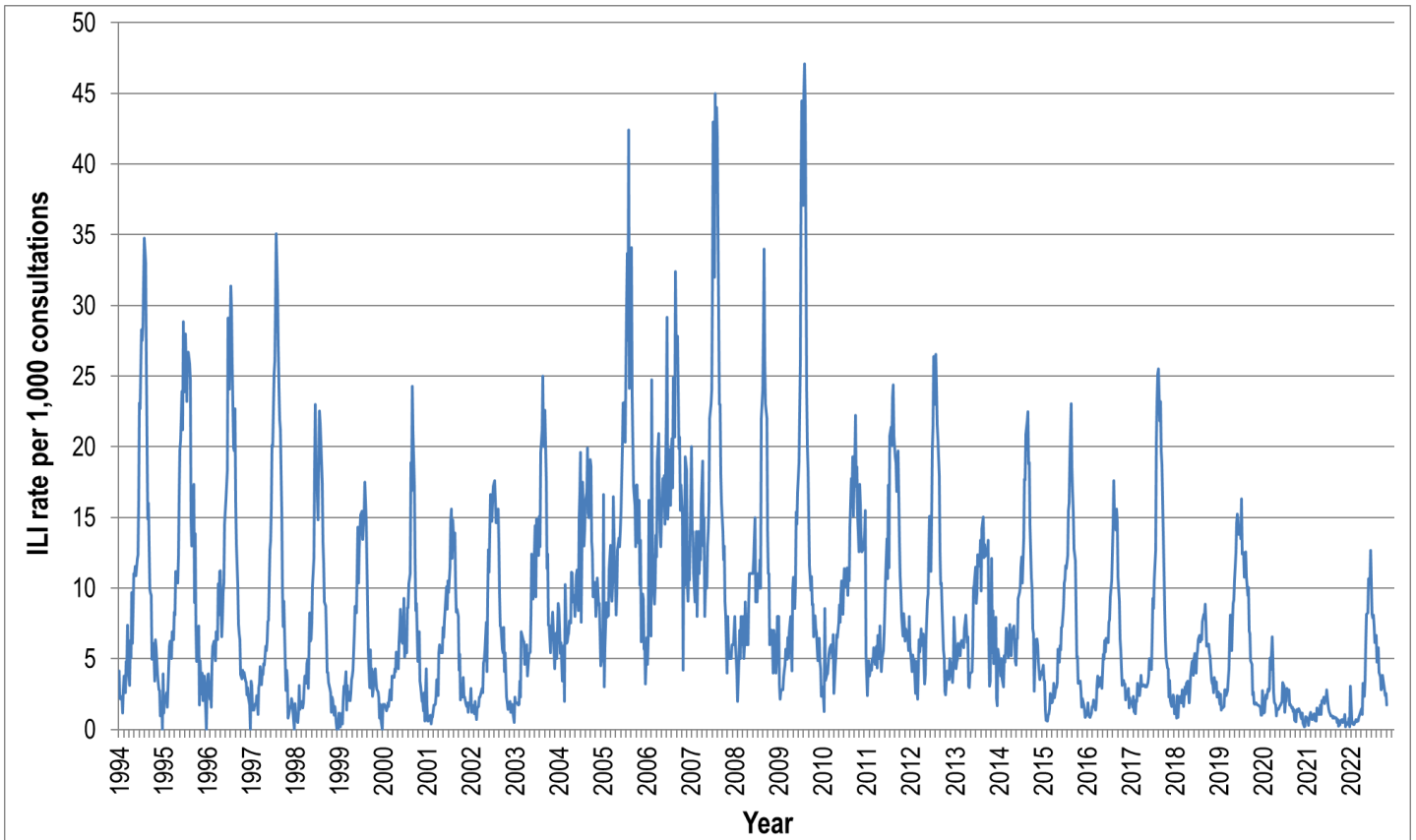


Figure 4. ASPREN ILI rates 1994 - 2022.

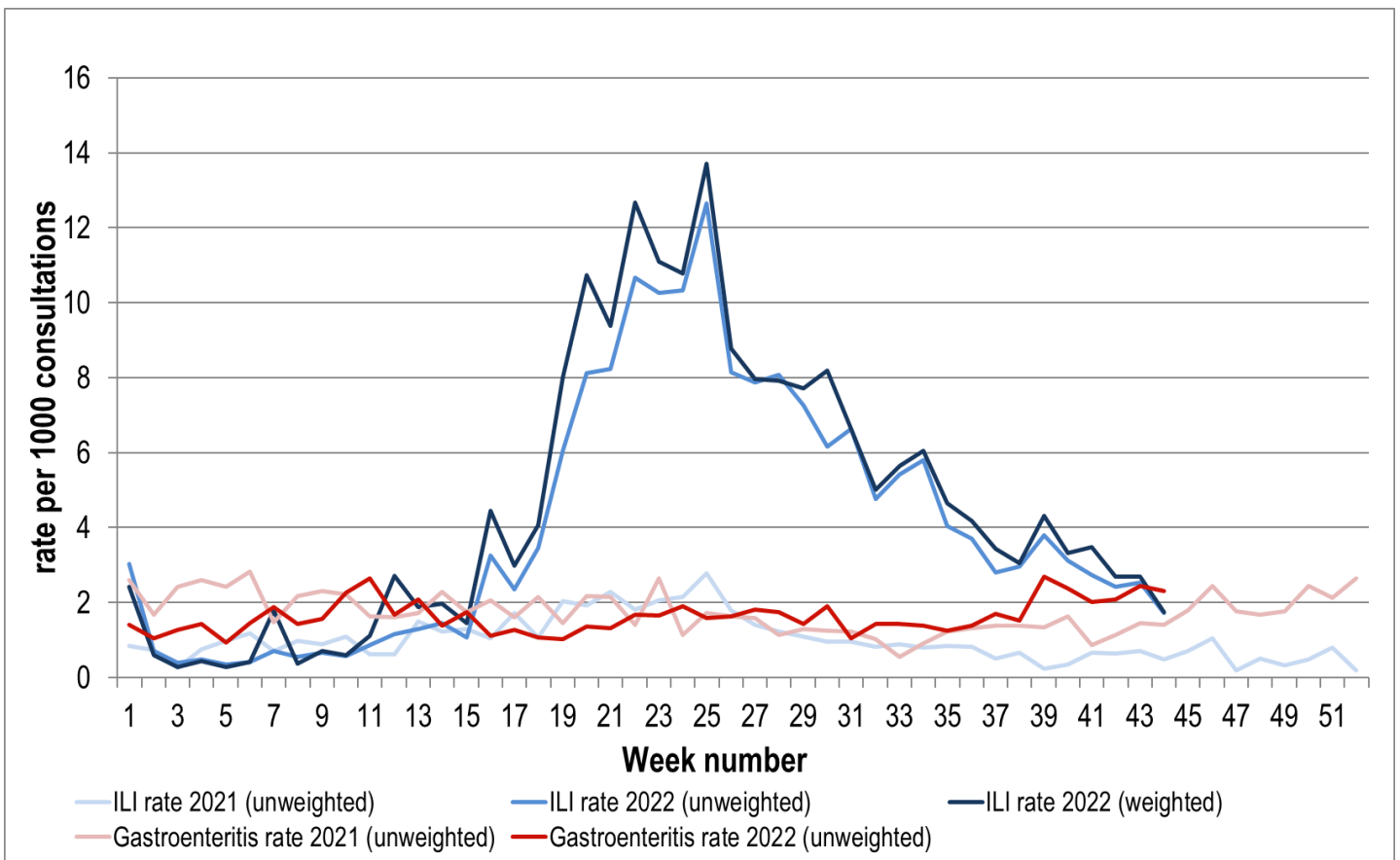


Figure 5. ASPREN + VicSPIN ILI and ASPREN gastroenteritis rates 2021-22. Weighted rates are weighted to account for population size differences between jurisdictions, using population estimates from the 2011 Australian Census.

VIROLOGICAL SURVEILLANCE

53% of all ILI patients were swab tested during weeks 43 and 44 (see Figure 6).

No cases of Influenza A and 5 cases of SARS-CoV-2 were detected during this period. There were 11 cases of Rhinovirus detected making it the most common respiratory virus circulating the nation at present (see figure 8).

Viral laboratory data are provided by SA Pathology and VicSPIN laboratories.

	Reporting Period 24 Oct - 6 Nov 2022	YTD 1 Jan - 6 Nov 2022
Total number of ILI notifications	68	2906
Number of swab tests performed	36	960
% ILI patients tested	53%	33%
% of swab tests positive for influenza	0%	17%

Figure 6. ASPREN + VicSPIN virological surveillance results overview for 2022 #

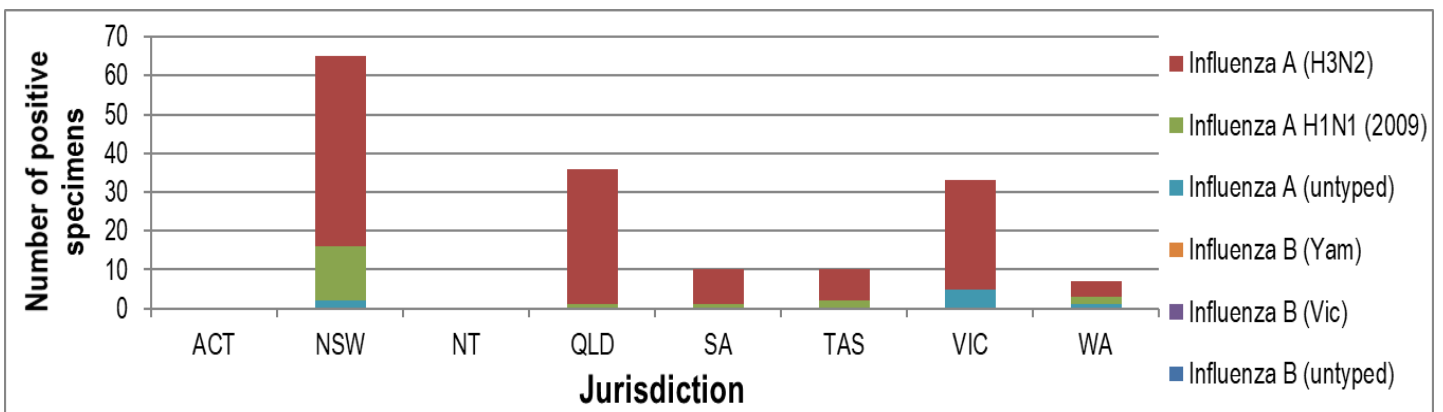


Figure 7. ASPREN + VicSPIN influenza subtype analysis by jurisdiction for 2022 #

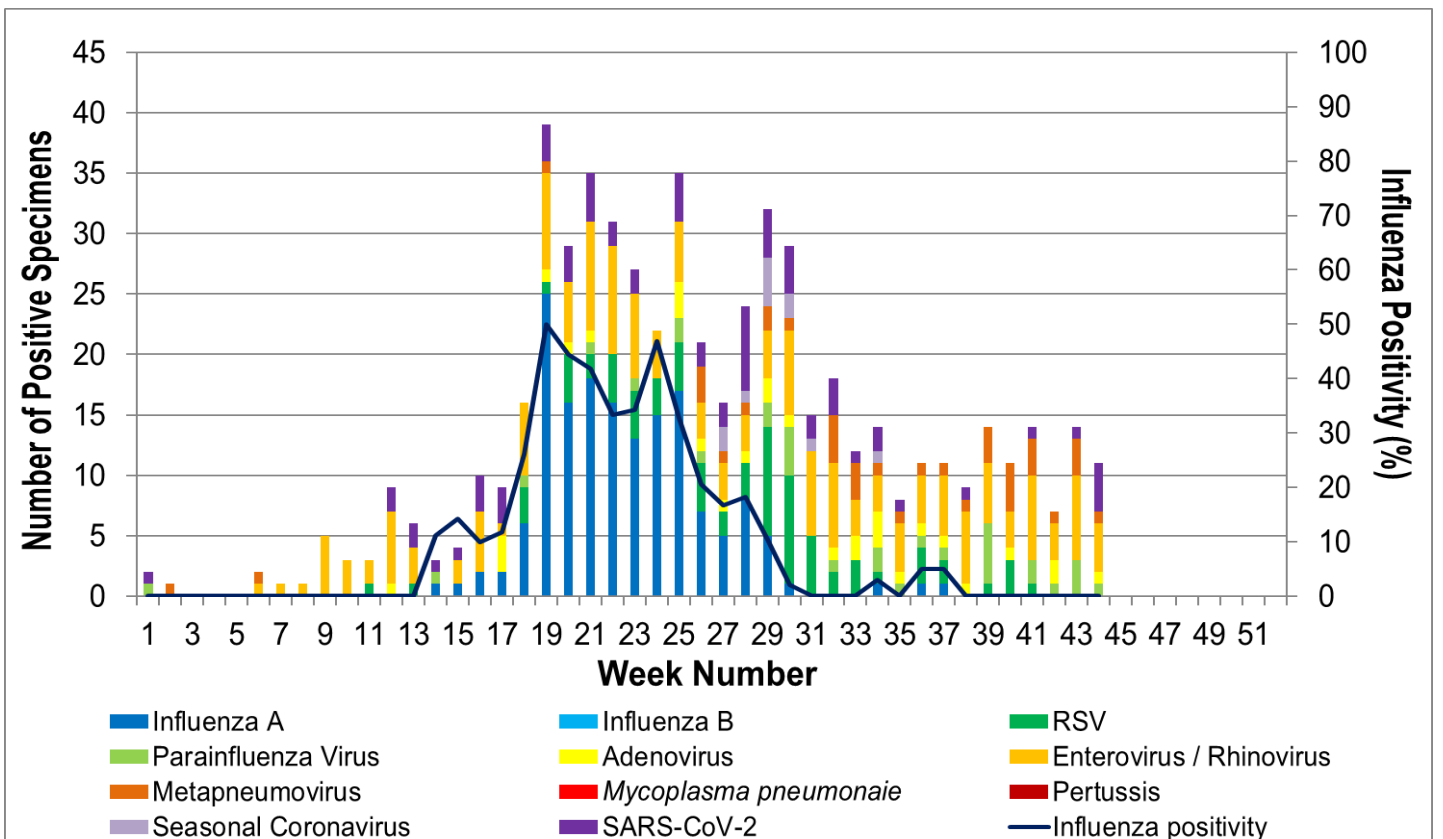


Figure 8. ASPREN, VicSPIN laboratory detection of influenza and other respiratory viruses for 2022 #