



**NATIONAL PRIMARY CARE INFECTIOUS DISEASES
SENTINEL SURVEILLANCE FORTNIGHTLY REPORT**

From The Australian Sentinel Practices Research Network (ASPREN) *

No. 23, 2023 - 6th November — 19th November 2023

NATIONAL SUMMARY

-  Influenza-like-illness levels remain steady at baseline levels
- 8** Case of influenza have been detected in this reporting period
6 x Influenza A
2 x Influenza B
- 14%** Influenza positivity during the reporting period.
- 318** Cases of influenza have been detected this year:
194 x Influenza A
124 x Influenza B
-  Gastroenteritis levels remain steady below baseline levels

**SYNDROMIC SURVEILLANCE
REPORTING**

Reports were received from 262 reporters from 8 states and territories during the reporting period. During weeks 45 and 46 reporters saw a total of 41,085 patients.

INFLUENZA-LIKE-ILLNESS (ILI)

Nationally, ILI notifications decreased during the period with 116 notifications being reported in weeks 45—46. ILI rates reported in this period were 4 and 3 cases per 1000 consultations (weighted). This was similar to the previous fortnight where rates were 3 and 4 cases per 1000 consultations in weeks 43 and 44 respectively. For the same reporting period in 2022, ILI rates were lower at 3 and 2 cases per 1000 consultations for weeks 45 and 46 respectively (see Fig. 5).

GASTROENTERITIS

Nationally, gastroenteritis notifications increased to 89 notifications reported. Gastroenteritis rates reported in this period remained steady at 2 cases per 1000 consultations in weeks 45 and 46 respectively, compared to 1 and 3 cases per 1000 consultations in weeks 43 and 44 respectively (see Fig. 5).

* ASPREN is funded by the Commonwealth's Department of Health, Office of Health Protection, Vaccine Preventable Disease Surveillance Section.

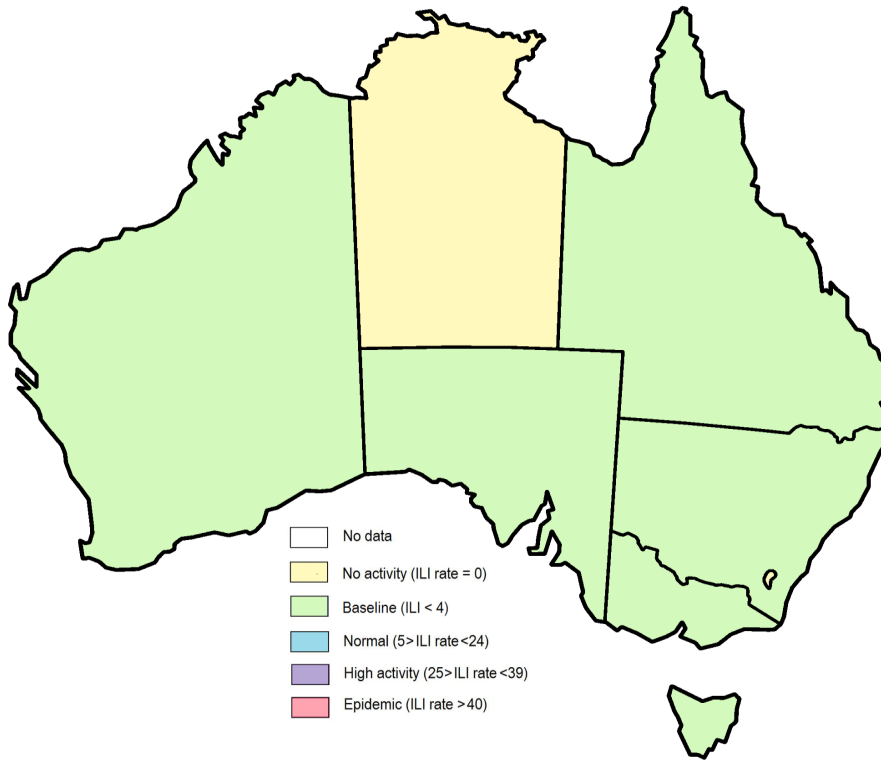


Figure 1. Map of ILI activity by jurisdiction, weeks 45 - 46, 2023.

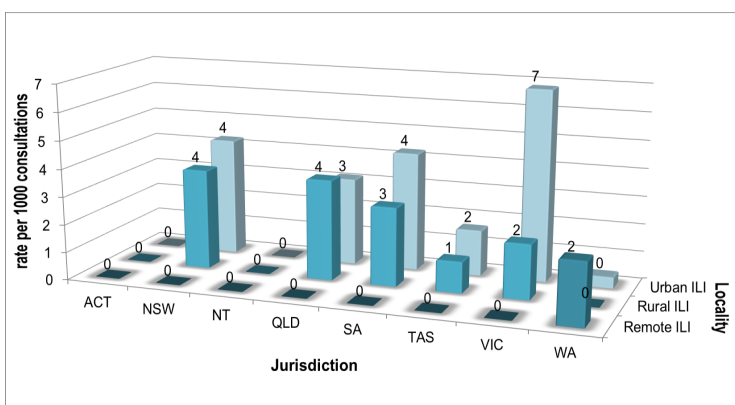


Figure 2. ASPREN rate of ILI by locality and jurisdiction, weeks 45 - 46, 2023.

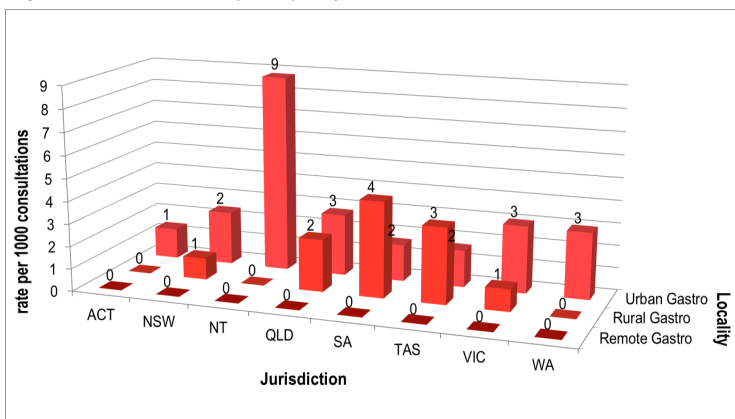


Figure 3. ASPREN rate of gastroenteritis by locality and jurisdiction, weeks 45 - 46, 2023.

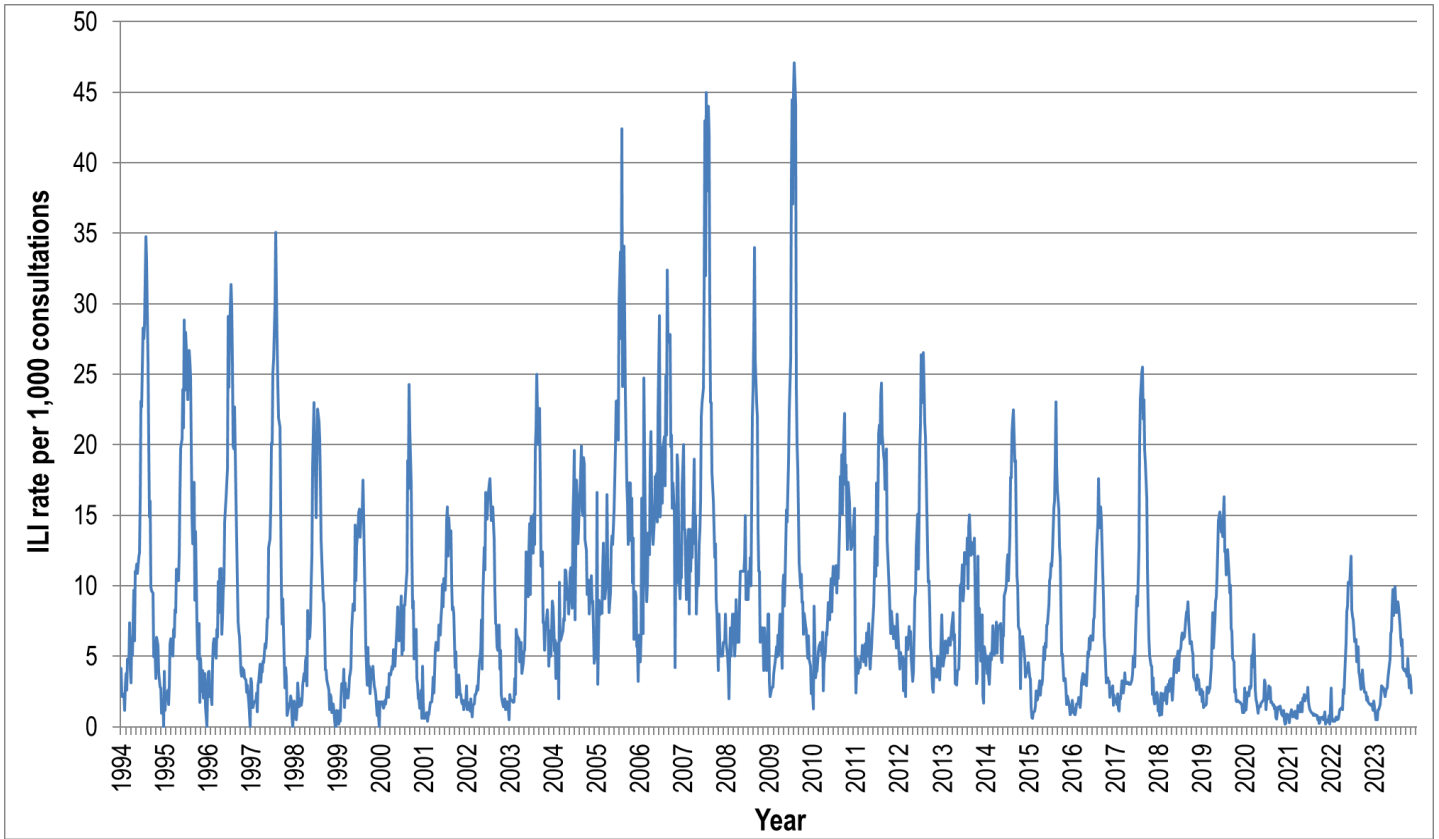


Figure 4. ASPREN ILI rates 1994 - 2023.

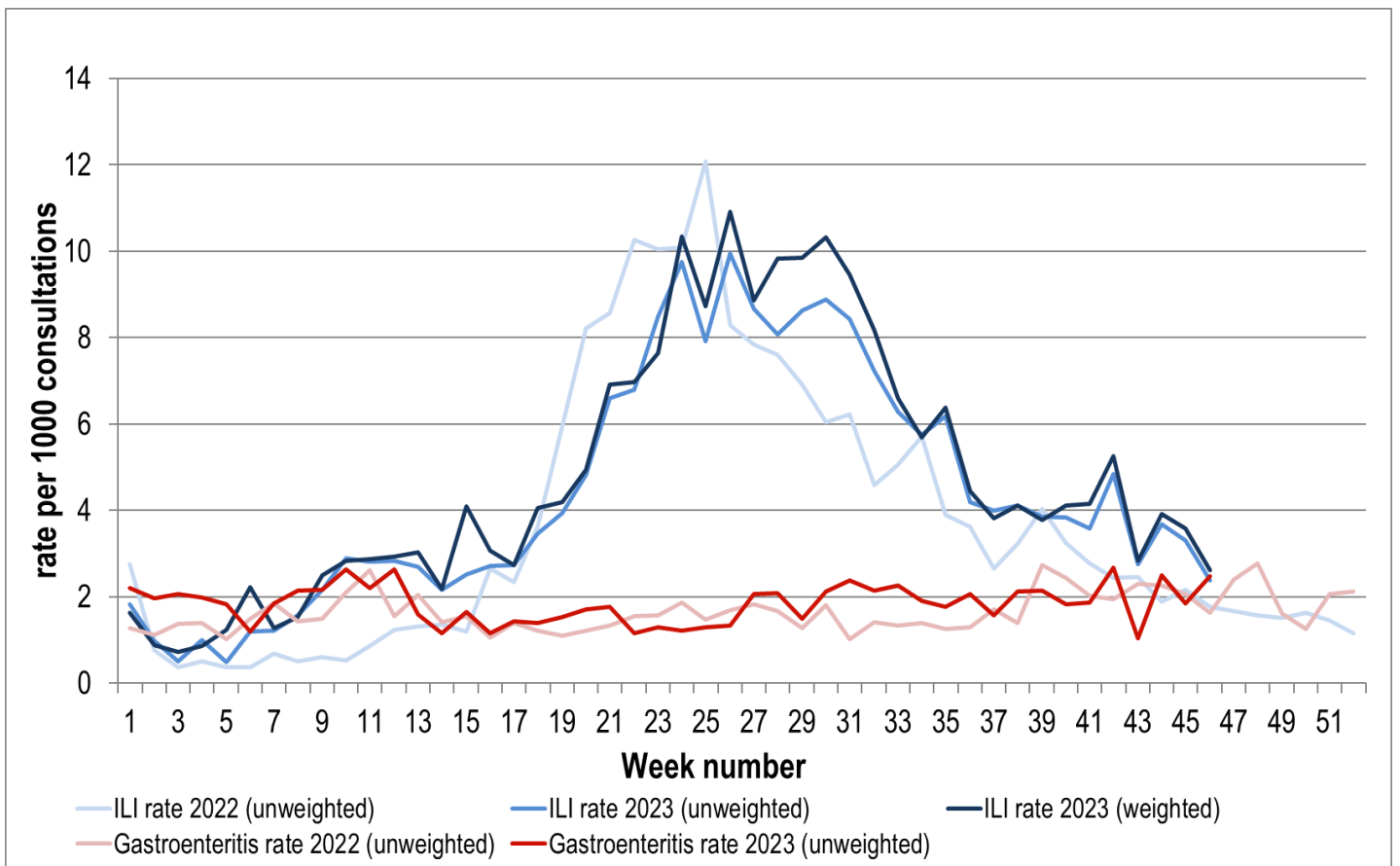


Figure 5. ASPREN ILI and gastroenteritis rates 2022-23. Weighted rates are weighted to account for population size differences between jurisdictions, using population estimates from the 2011 Australian Census.

VIROLOGICAL SURVEILLANCE

50% of all ILI patients were swab tested during weeks 45 and 46 (see Figure 6).

6 cases of Influenza A, 2 cases of Influenza B, and 9 cases of SARS-CoV-2 were detected during this period. There were 11 cases of Rhinovirus detected making it the most common respiratory virus circulating the nation at present (see figure 8).

Viral laboratory data is provided by SA Pathology laboratory.

	Reporting Period	YTD
	6 Nov - 19 Nov 2023	1 Jan - 19 Nov 2023
Total number of ILI notifications	116	3743
Number of swab tests performed	58	1616
% ILI patients tested	50%	43%
% of swab tests positive for influenza	14%	20%

Figure 6. ASPREN virological surveillance results overview for 2023 #

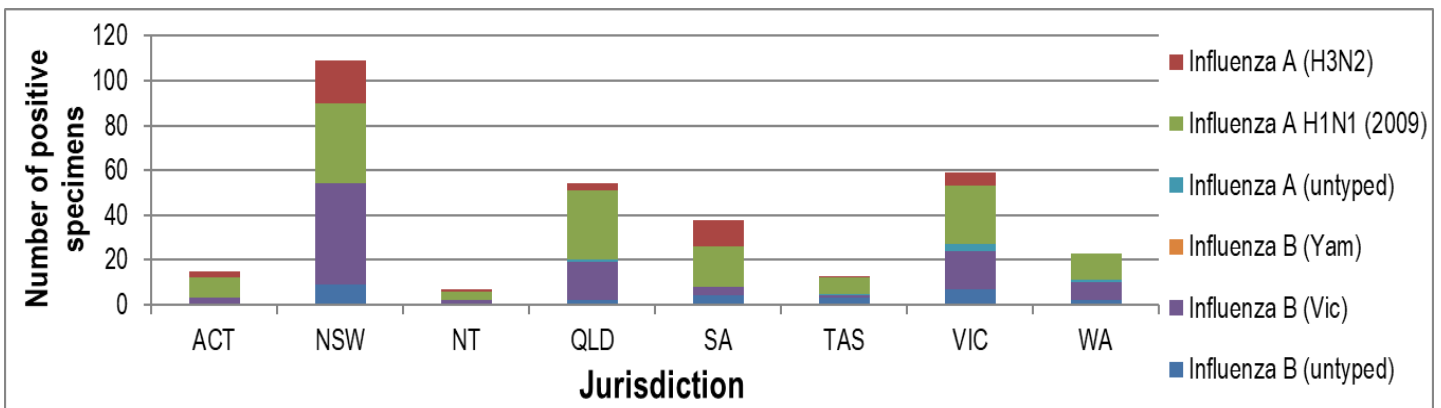


Figure 7. ASPREN influenza subtype analysis by jurisdiction for 2023 #

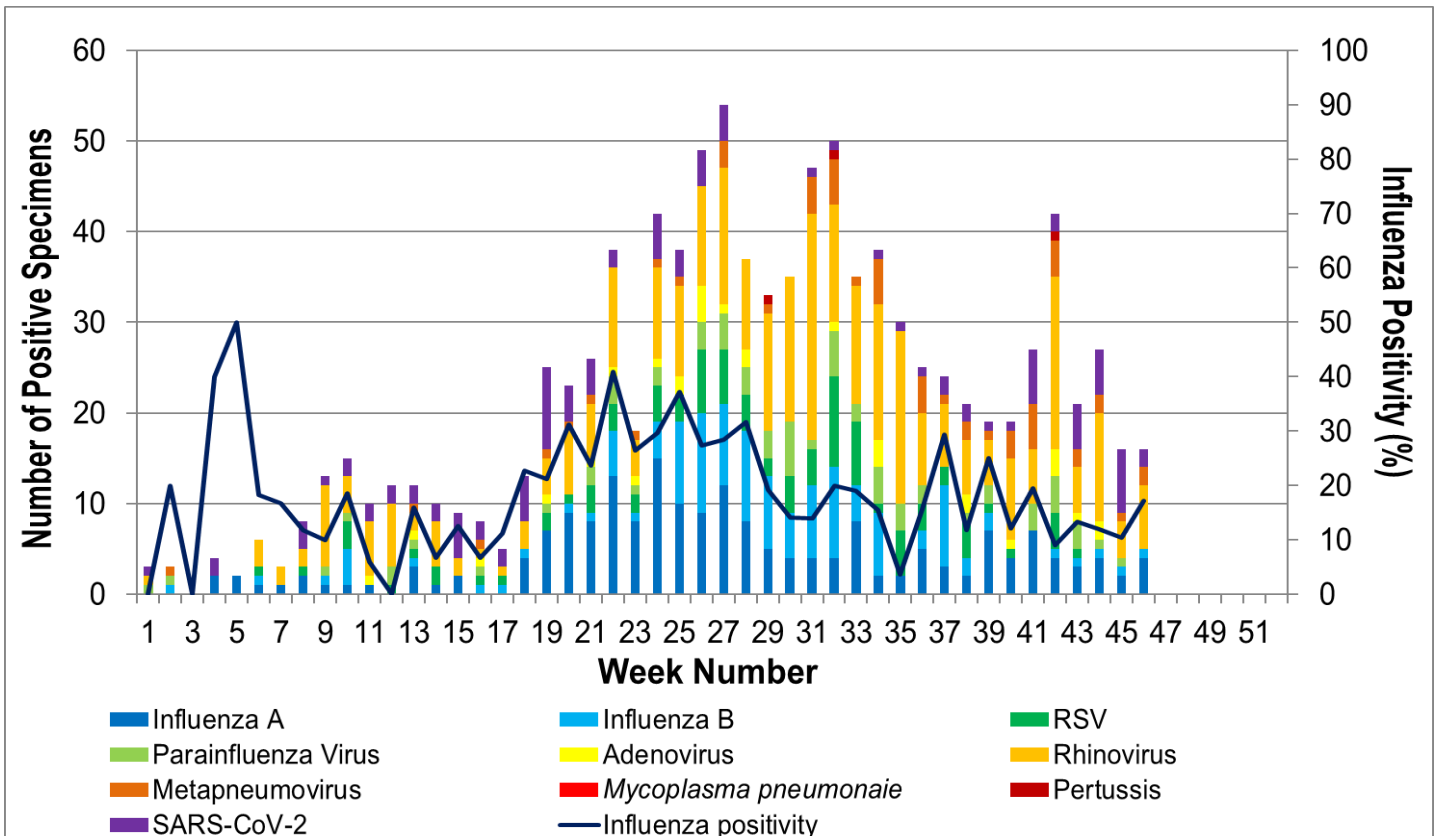


Figure 8. ASPREN, laboratory detection of influenza and other respiratory viruses for 2023 #

The Australian Sentinel Practices Research Network is supported by the Australian Government Department of Health (the Department). The opinions expressed in this paper are those of the authors, and do not necessarily represent the views of the Department.

Please note: This report is based on data available as at 23 November 2023. Delays in the reporting of data may cause data to change retrospectively.