

**NATIONAL PRIMARY CARE INFECTIOUS DISEASES  
SENTINEL SURVEILLANCE FORTNIGHTLY REPORT**

From The Australian Sentinel Practices Research Network (ASPREN) \*

No. 22, 2023 - 23rd October — 5th November 2023

**NATIONAL SUMMARY**



Influenza-like-illness levels are decreasing

**9**

Case of influenza have been detected in this reporting period  
7 x Influenza A  
2 x Influenza B

**13%**

Influenza positivity during the reporting period.

**310**

Cases of influenza have been detected this year:  
188 x Influenza A  
122 x Influenza B



Gastroenteritis levels remain steady below baseline levels

**SYNDROMIC SURVEILLANCE  
REPORTING**

Reports were received from 268 reporters from 8 states and territories during the reporting period. During weeks 43 and 44 reporters saw a total of 40,795 patients.

**INFLUENZA-LIKE-ILLNESS (ILI)**

Nationally, ILI notifications decreased significantly during the period with 131 notifications being reported in weeks 43—44. ILI rates reported in this period were 3 and 4 cases per 1000 consultations (weighted). This was slightly lower than the previous fortnight where rates were 4 and 5 cases per 1000 consultations in weeks 41 and 42 respectively. For the same reporting period in 2022, ILI rates were lower at 3 and 2 cases per 1000 consultations for weeks 43 and 44 respectively (see Fig. 5).

**GASTROENTERITIS**

Nationally, gastroenteritis notifications decreased to 72 notifications reported. Gastroenteritis rates reported in this period slightly decreased to 1 and 3 cases per 1000 consultations in weeks 43 and 44 respectively, compared to 2 and 3 cases per 1000 consultations in weeks 41 and 42 respectively (see Fig. 5).

\* ASPREN is funded by the Commonwealth's Department of Health, Office of Health Protection, Vaccine Preventable Disease Surveillance Section.

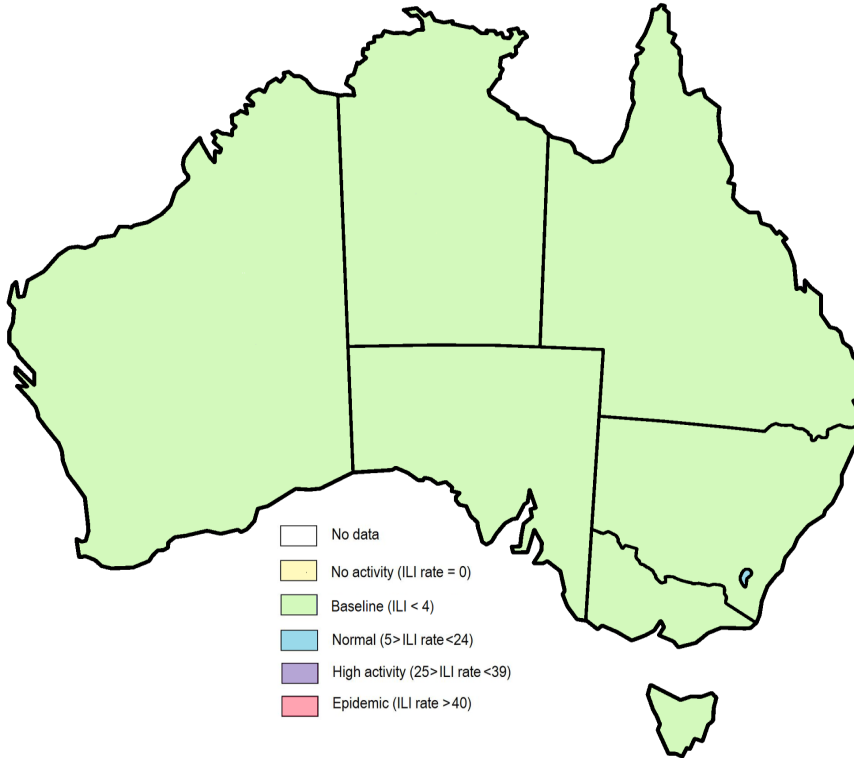


Figure 1. Map of ILI activity by jurisdiction, weeks 43 - 44, 2023.

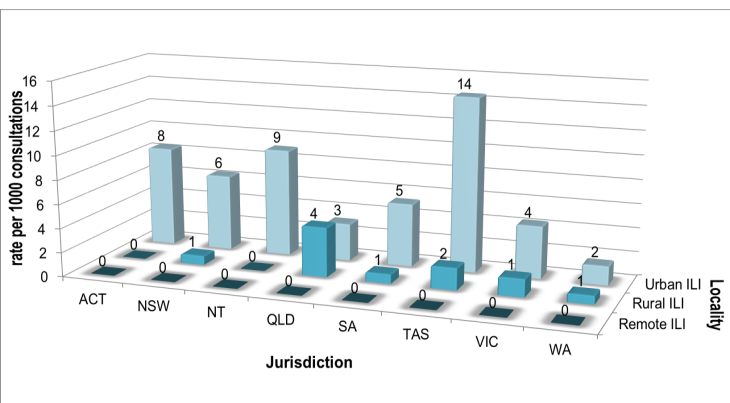


Figure 2. ASPREN rate of ILI by locality and jurisdiction, weeks 43 - 44, 2023.

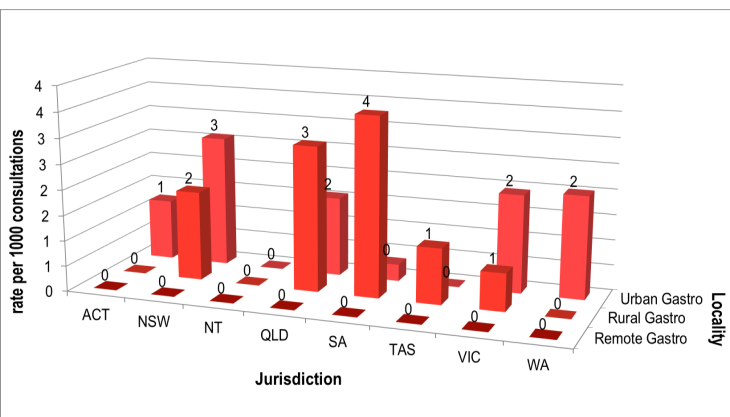


Figure 3. ASPREN rate of gastroenteritis by locality and jurisdiction, weeks 43 - 44, 2023.

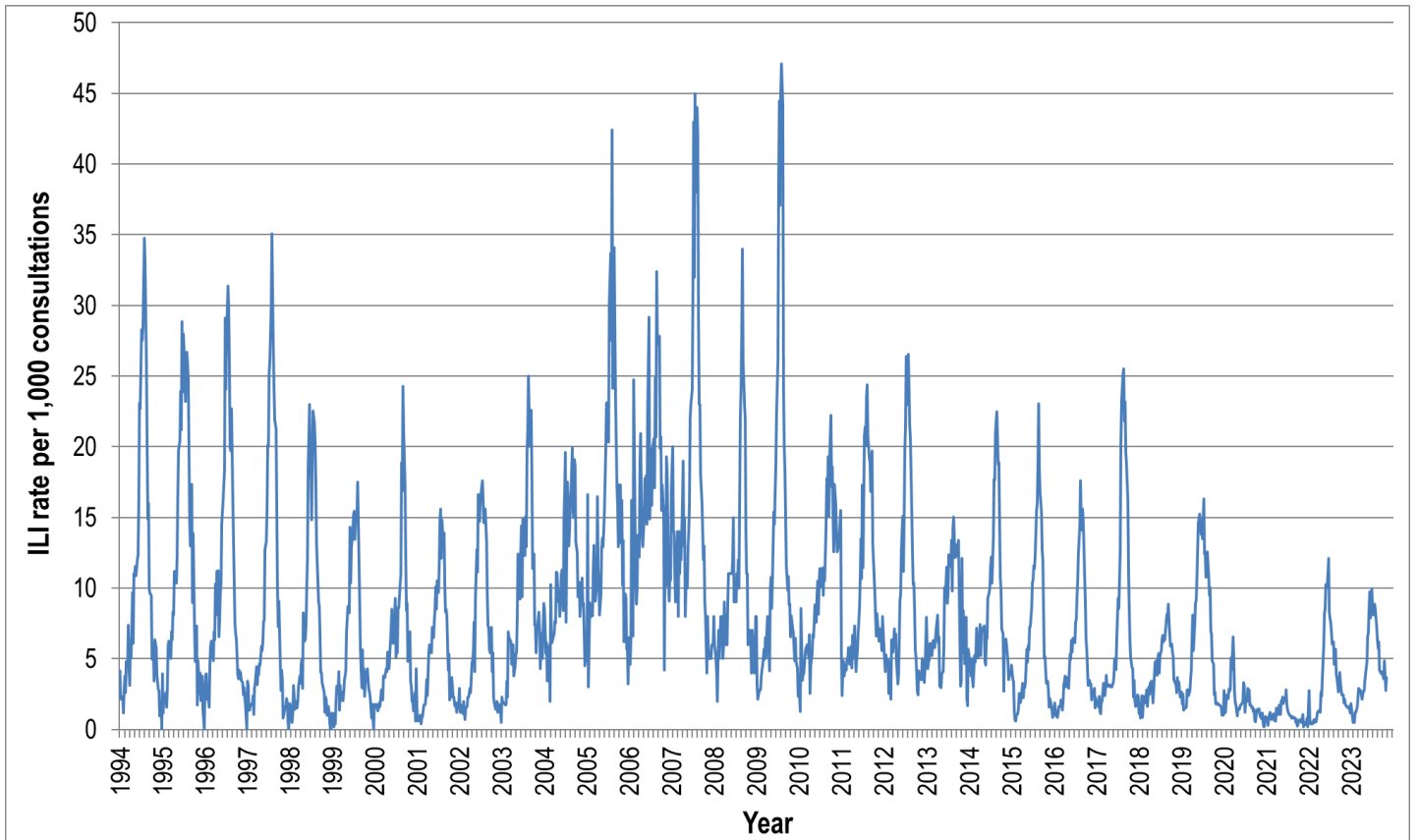


Figure 4. ASPREN ILI rates 1994 - 2023.

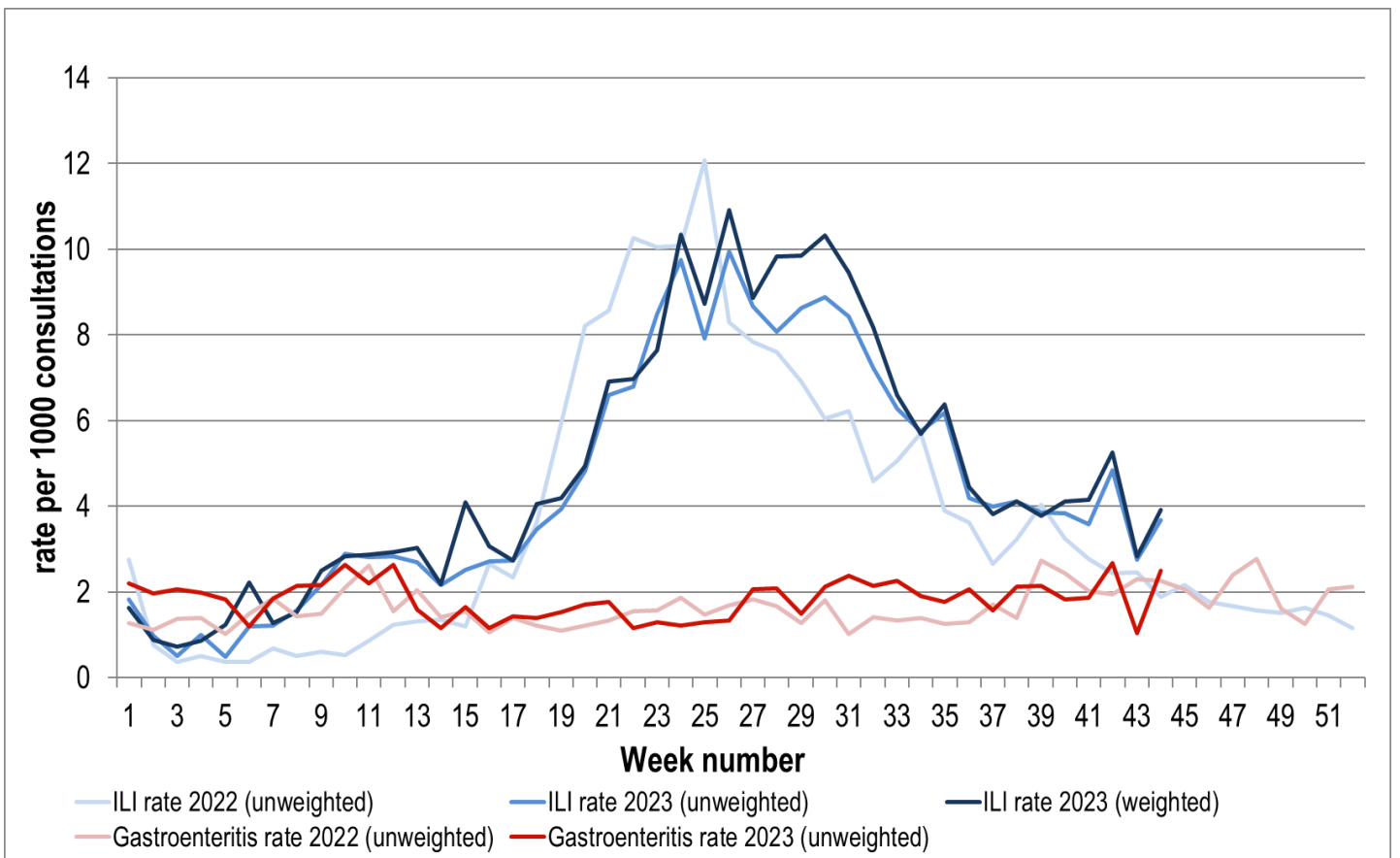


Figure 5. ASPREN ILI and gastroenteritis rates 2022-23. Weighted rates are weighted to account for population size differences between jurisdictions, using population estimates from the 2011 Australian Census.

**VIROLOGICAL SURVEILLANCE**

55% of all ILI patients were swab tested during weeks 43 and 44 (see Figure 6).

7 cases of Influenza A, 2 cases of Influenza B, and 10 cases of SARS-CoV-2 were detected during this period. There were 17 cases of Rhinovirus detected making it the most common respiratory virus circulating the nation at present (see figure 8).

# Viral laboratory data is provided by SA Pathology laboratory.

	Reporting Period 23 Oct - 5 Nov 2023	YTD 1 Jan - 5 Nov 2023
Total number of ILI notifications	131	3627
Number of swab tests performed	72	1558
% ILI patients tested	55%	43%
% of swab tests positive for influenza	13%	20%

Figure 6. ASPREN virological surveillance results overview for 2023 #

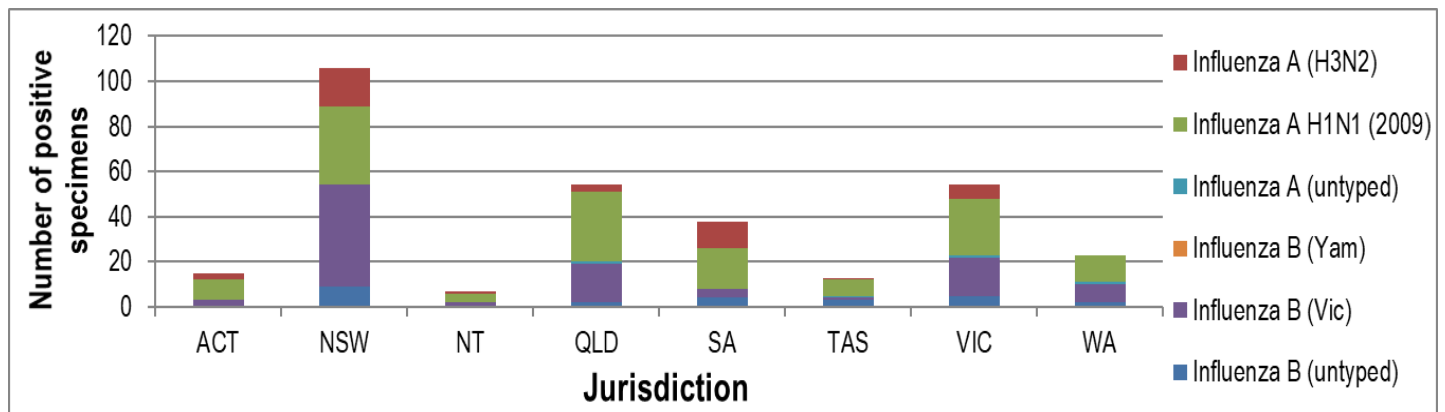


Figure 7. ASPREN influenza subtype analysis by jurisdiction for 2023 #

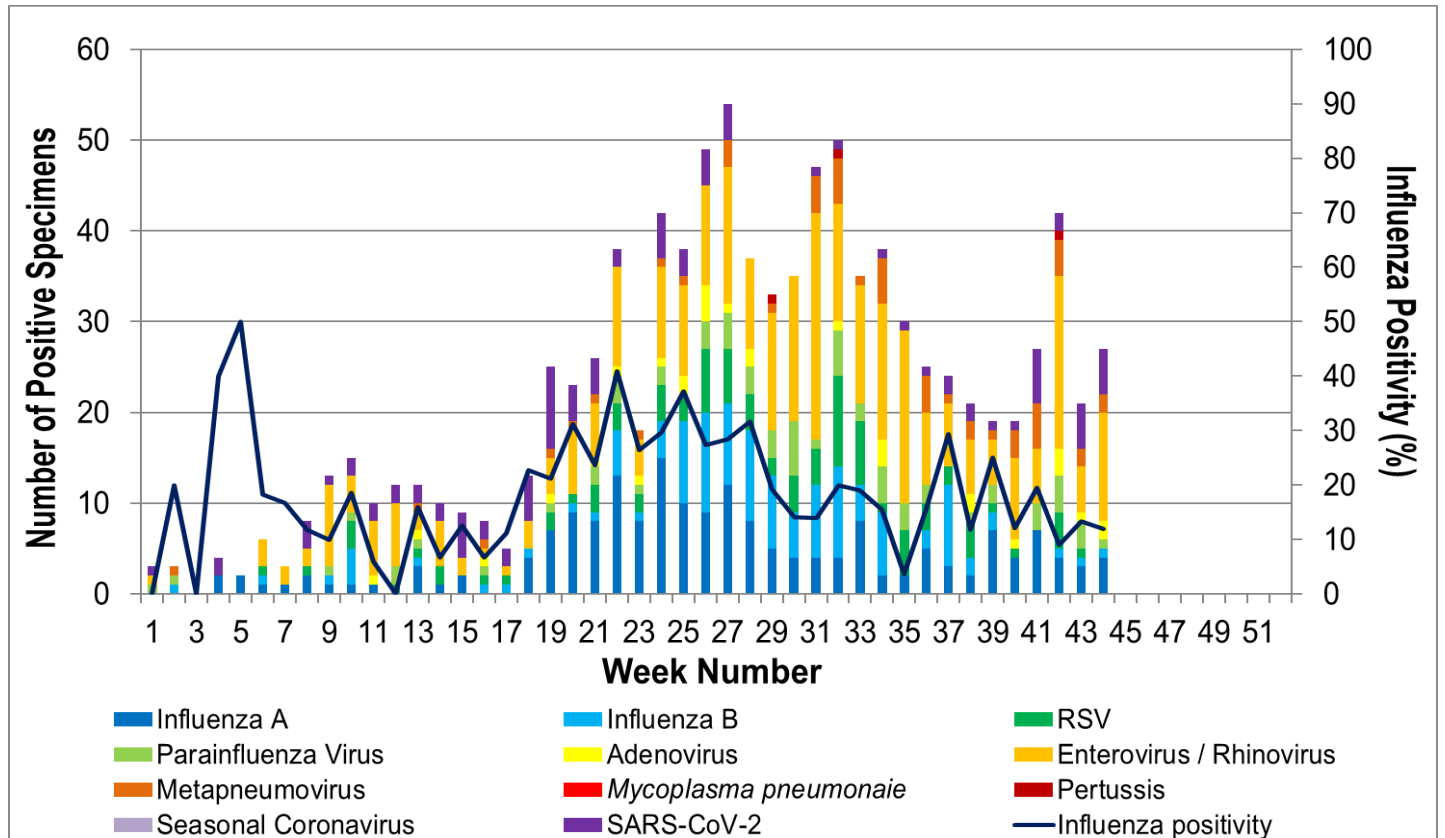


Figure 8. ASPREN, laboratory detection of influenza and other respiratory viruses for 2023 #

The Australian Sentinel Practices Research Network is supported by the Australian Government Department of Health (the Department). The opinions expressed in this paper are those of the authors, and do not necessarily represent the views of the Department.

Please note: This report is based on data available as at 9 November 2023. Delays in the reporting of data may cause data to change retrospectively.