

**NATIONAL PRIMARY CARE INFECTIOUS DISEASES
SENTINEL SURVEILLANCE FORTNIGHTLY REPORT**

From The Australian Sentinel Practices Research Network (ASPREN) *

No. 19, 2023 - 11th September — 24th September 2023

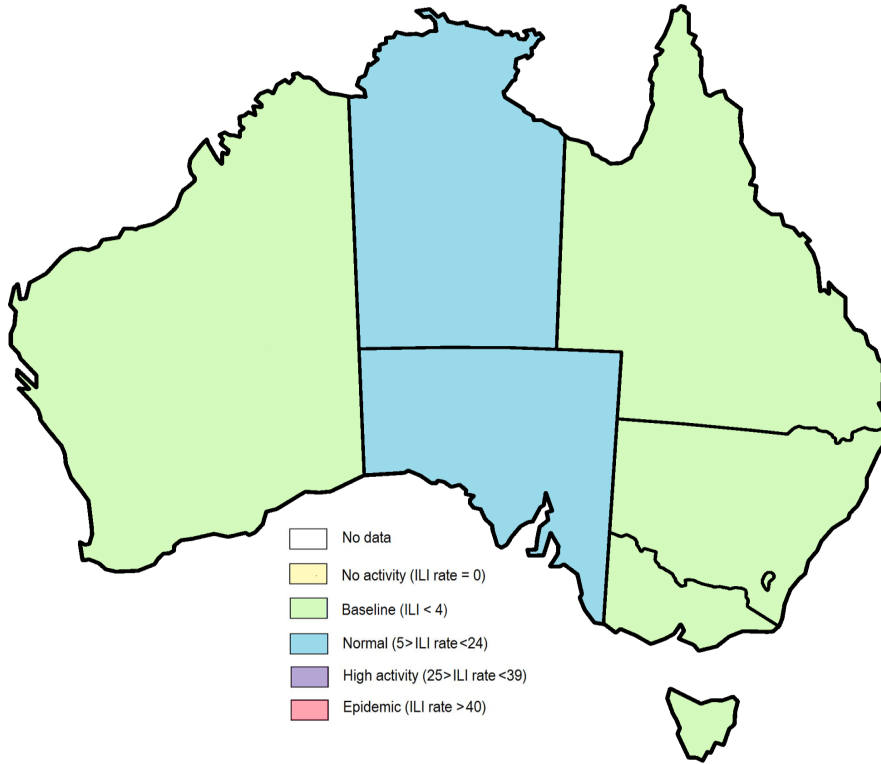


Figure 1. Map of ILI activity by jurisdiction, weeks 37 - 38, 2023.

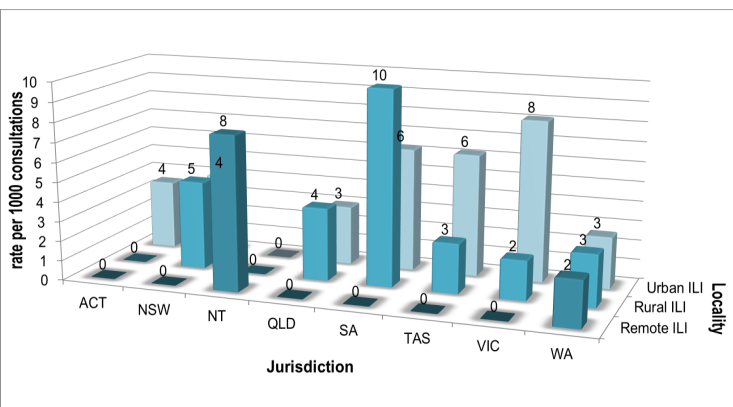


Figure 2. ASPREN rate of ILI by locality and jurisdiction, weeks 37 - 38, 2023.

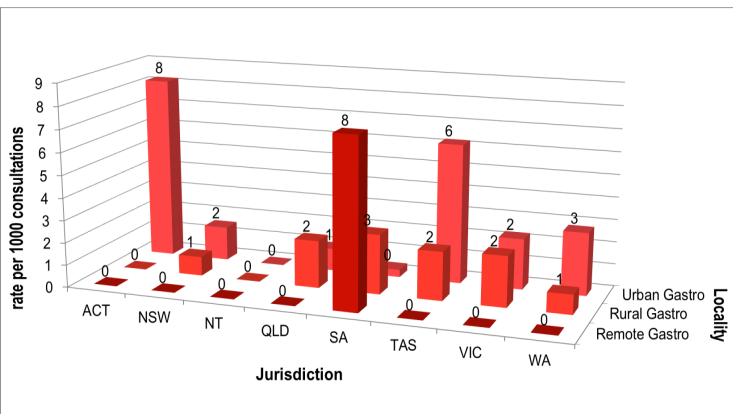


Figure 3. ASPREN rate of gastroenteritis by locality and jurisdiction, weeks 37 - 38, 2023.

NATIONAL SUMMARY

Influenza-like-illness levels remain steady at baseline levels

16 Case of influenza have been detected in this reporting period
5 x Influenza A
11 x Influenza B

9% Influenza positivity during the reporting period.

276 Cases of influenza have been detected this year:
159 x Influenza A
117 x Influenza B

Gastroenteritis levels remain steady below baseline levels

**SYNDROMIC SURVEILLANCE
REPORTING**

Reports were received from 279 reporters from 8 states and territories during the reporting period. During weeks 37 and 38 reporters saw a total of 46,198 patients.

INFLUENZA-LIKE-ILLNESS (ILI)

Nationally, ILI notifications decreased during the period with 187 notifications being reported in weeks 37—38. ILI rates reported in this period were 4 cases per 1000 consultations (weighted). This was lower than the previous fortnight where rates were 6 and 4 cases per 1000 consultations in weeks 35 and 36 respectively. For the same reporting period in 2022, ILI rates were lower at 3 cases per 1000 consultations for weeks 37 and 38 respectively (see Fig. 5).

GASTROENTERITIS

Nationally, gastroenteritis notifications remained steady at 85 notifications reported. Gastroenteritis rates reported in this period remained steady at 2 cases per 1000 consultations in weeks 37 and 38, compared to 2 cases per 1000 consultations in weeks 35 and 36 (see Fig. 5).

* ASPREN is funded by the Commonwealth's Department of Health, Office of Health Protection, Vaccine Preventable Disease Surveillance Section.

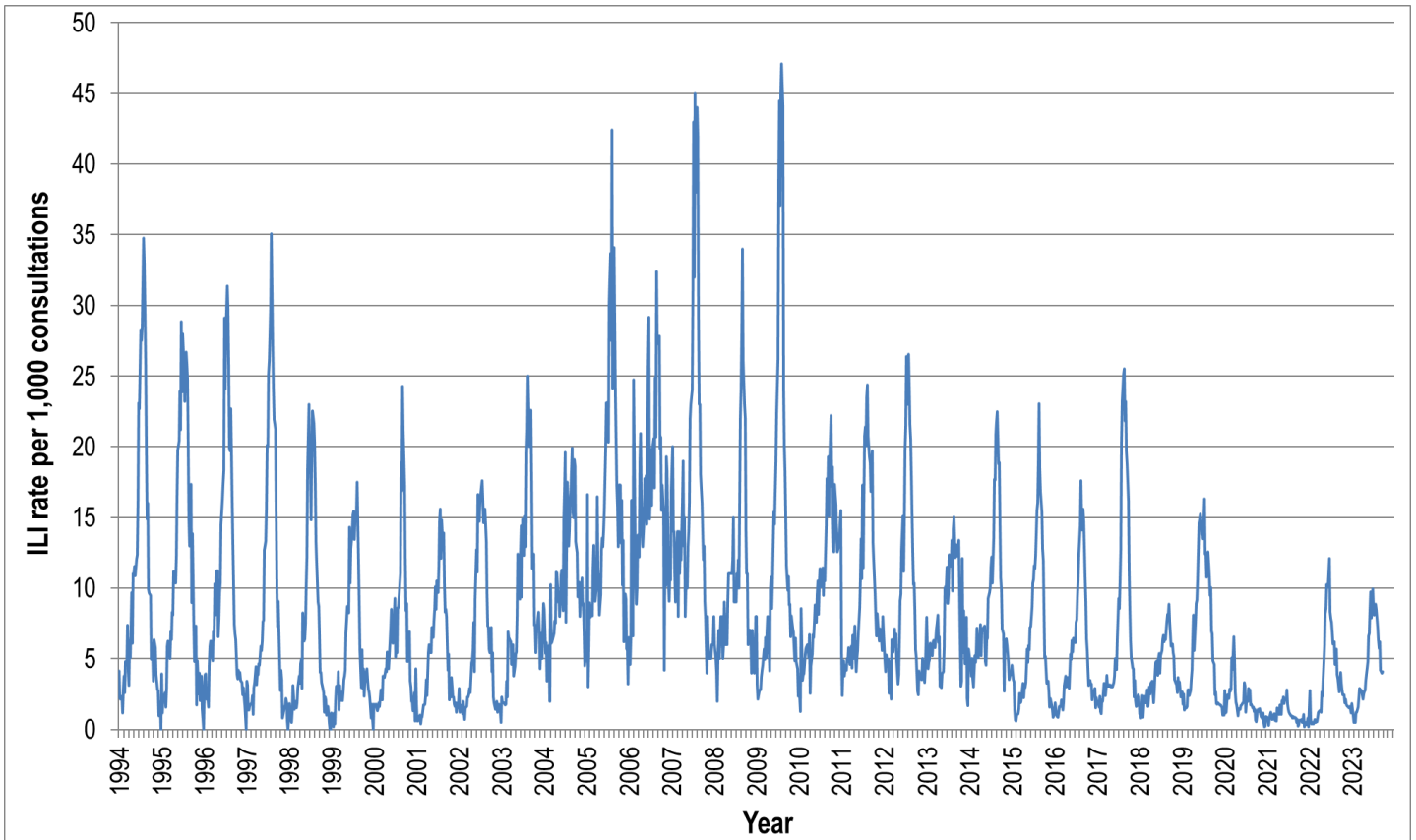


Figure 4. ASPREN ILI rates 1994 - 2023.

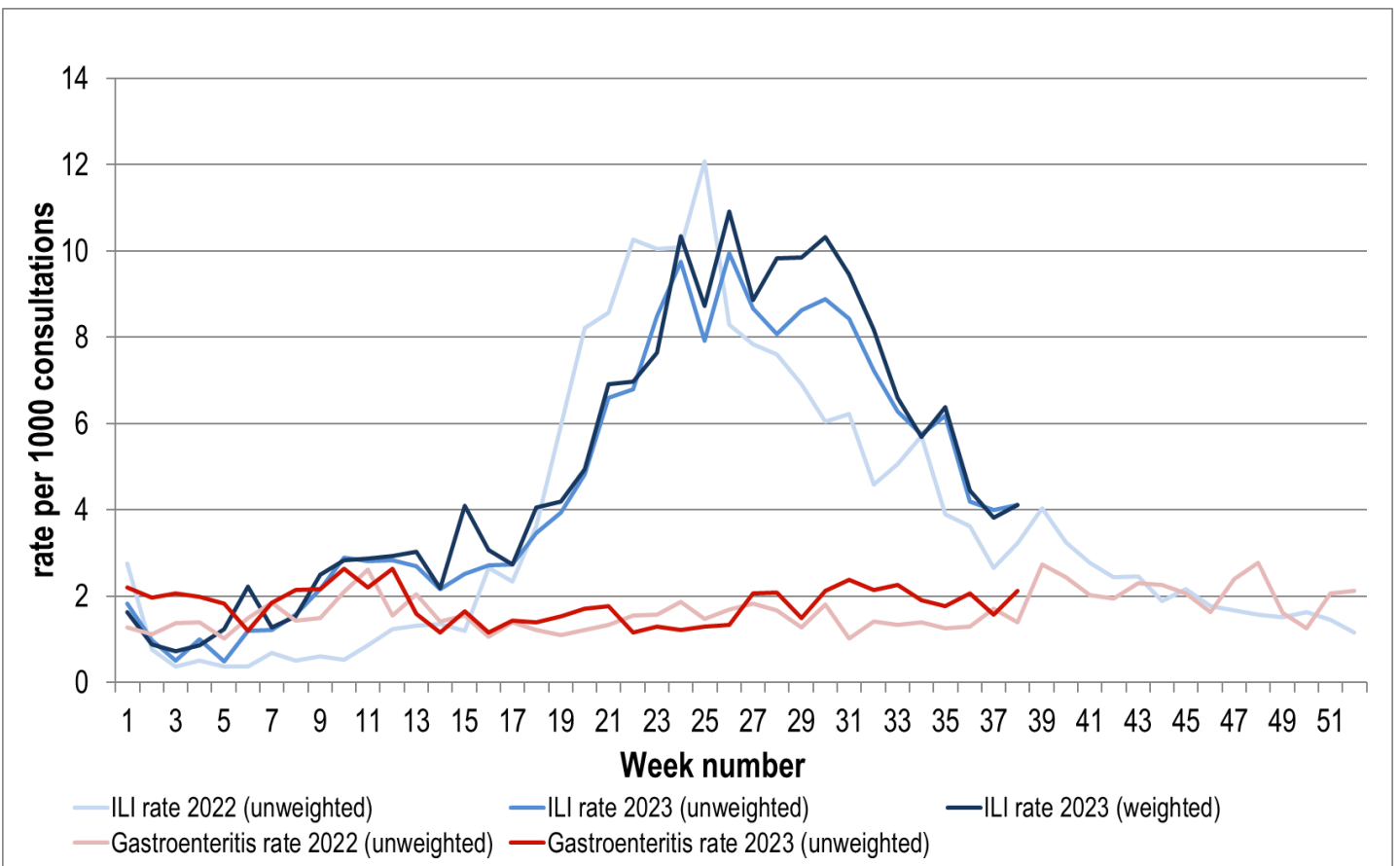


Figure 5. ASPREN ILI and gastroenteritis rates 2022-23. Weighted rates are weighted to account for population size differences between jurisdictions, using population estimates from the 2011 Australian Census.

VIROLOGICAL SURVEILLANCE

54% of all ILI patients were swab tested during weeks 37 and 38 (see Figure 6).

5 cases of Influenza A, 11 cases of Influenza B, and 4 cases of SARS-CoV-2 were detected during this period. There were 13 cases of Rhinovirus detected making it the most common respiratory virus circulating the nation at present (see figure 8).

Viral laboratory data is provided by SA Pathology laboratory.

	Reporting Period	YTD
	11 Sept - 24 Sept 2023	1 Jan - 24 Sept 2023
Total number of ILI notifications	187	3175
Number of swab tests performed	101	1325
% ILI patients tested	54%	42%
% of swab tests positive for influenza	9%	21%

Figure 6. ASPREN virological surveillance results overview for 2023 #

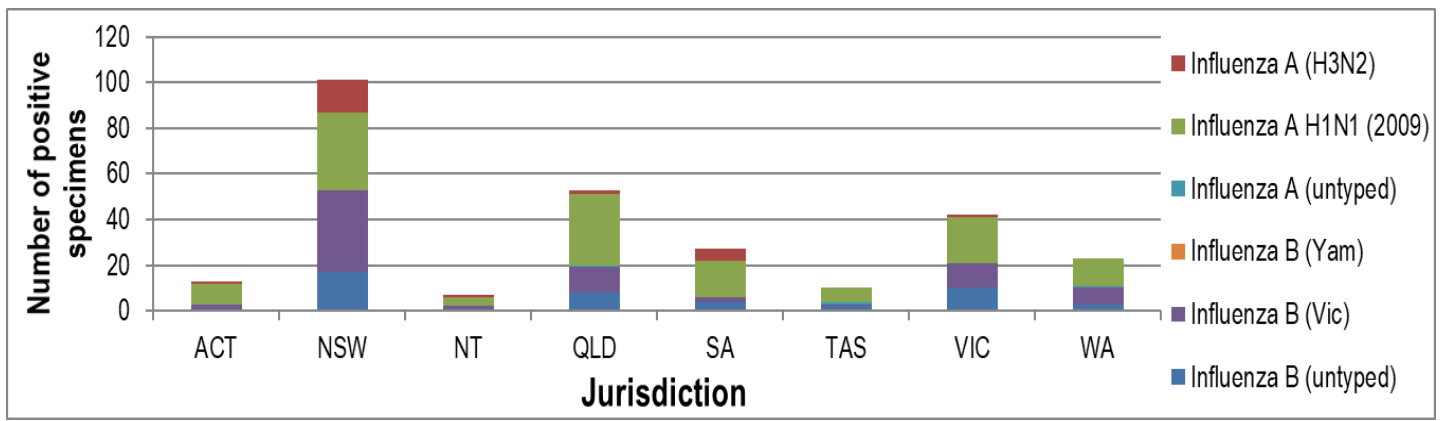


Figure 7. ASPREN influenza subtype analysis by jurisdiction for 2023 #

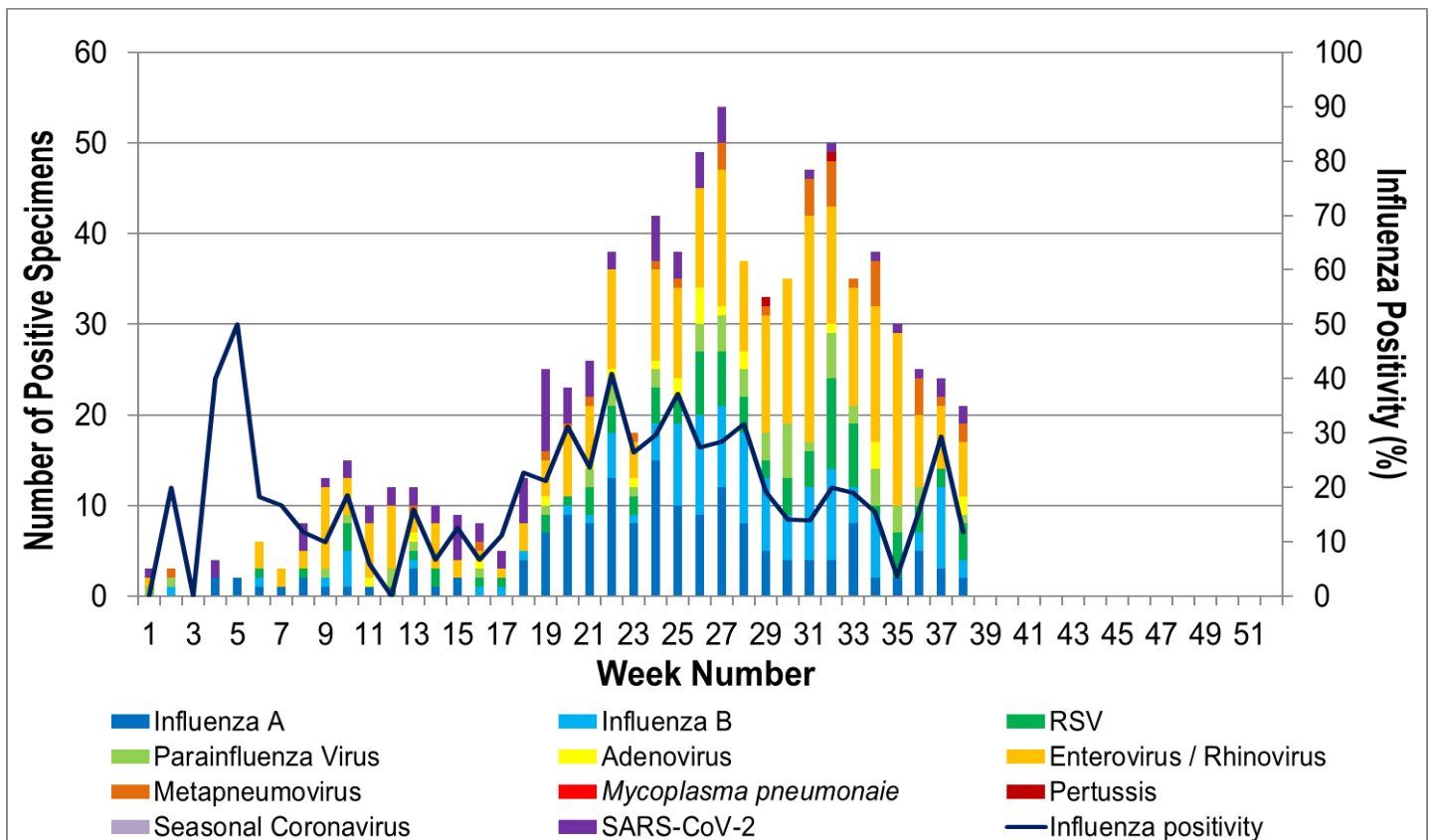


Figure 8. ASPREN, laboratory detection of influenza and other respiratory viruses for 2023 #

The Australian Sentinel Practices Research Network is supported by the Australian Government Department of Health (the Department). The opinions expressed in this paper are those of the authors, and do not necessarily represent the views of the Department.

Please note: This report is based on data available as at 28 September 2023. Delays in the reporting of data may cause data to change retrospectively.