



Reporting period: Week 13–14, 2026
(23 March – 5 April 2026)

Summary: Influenza-like illness (ILI) activity is low. Enterovirus / rhinovirus is the most commonly circulating pathogen.



Influenza-like-illness levels remain steady. Rates are consistent with the same period in previous years.

3%

Influenza positivity during the reporting period.

32

Case of influenza have been detected this year:
28 x Influenza A
4 x Influenza B

3

Case of influenza have been detected in this reporting period:
3 x Influenza A
0 x Influenza B

Key messages

- ILI rates are low and below baseline, with the exception of the NT where there is moderate activity.
- ILI activity is being driven by children aged 1 – 4 years.
- There has been an increase in parainfluenza virus cases during the reporting period, with the majority of these being parainfluenza-1.
- Enterovirus / rhinovirus is the most commonly circulating pathogen in this reporting period.

Participation

320 reporters have submitted data to ASPREN this fortnight (333 YTD), throughout all 8 jurisdictions. Reporters undertook a total of 45,812 patient consultations during the reporting period.

Table 1. ASPREN reporter participation, weeks 13-14, 2026.

Jurisdiction	Reporters	Consultations	Proportion	ABS population proportion
ACT	21	2,582	6.6%	1.76%
NSW	84	12,281	26.2%	31.1%
NT	3	366	0.9%	0.96%
QLD	35	6,578	10.9%	20.5%
SA	45	5,457	14.1%	6.89%
TAS	25	2,672	7.8%	2.09%
VIC	42	6,484	13.1%	25.6%
WA	65	9,392	20.3%	11%
Australia	320	45,812	100%	100%

Syndromic Surveillance

Influenza-like illness (ILI)

Figure 1. ASPREN ILI rate per 100,000 consultations, 1 January 2024 – 5 April 2026.

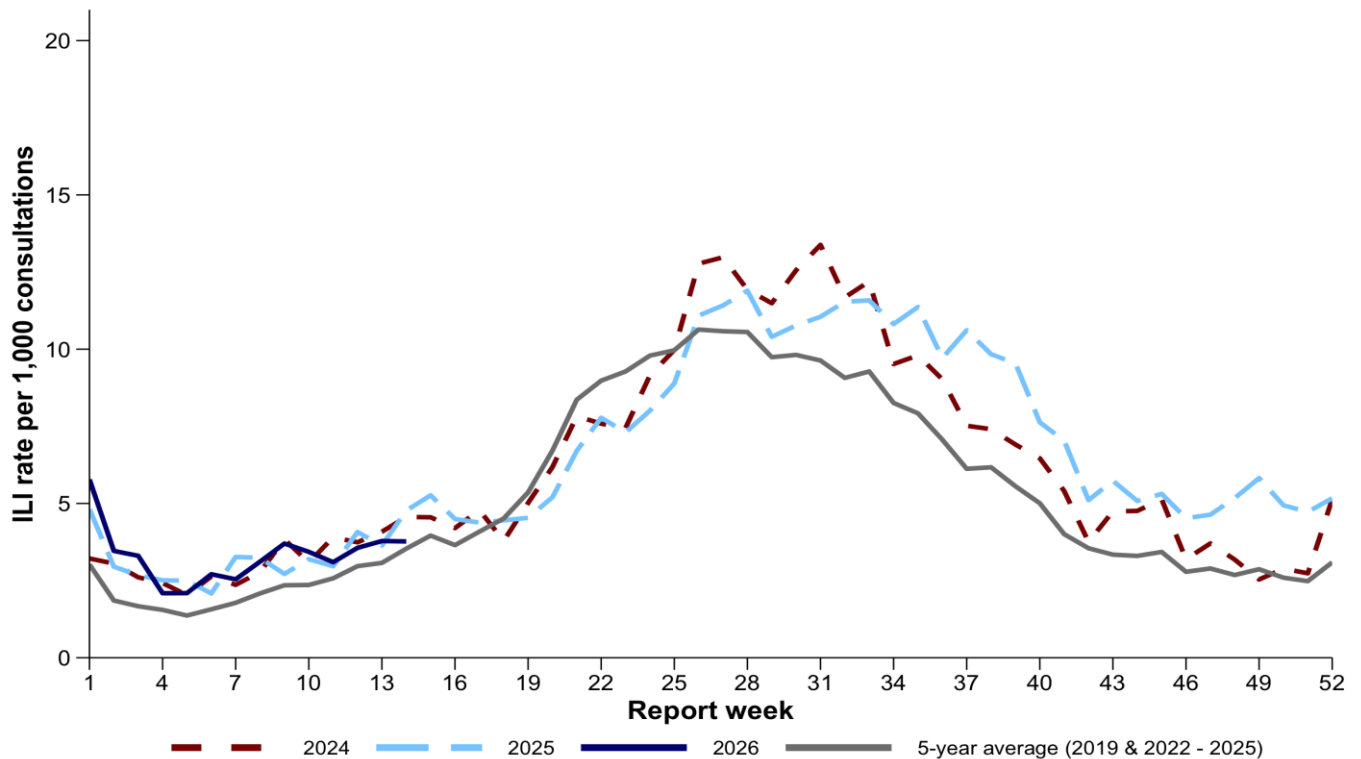
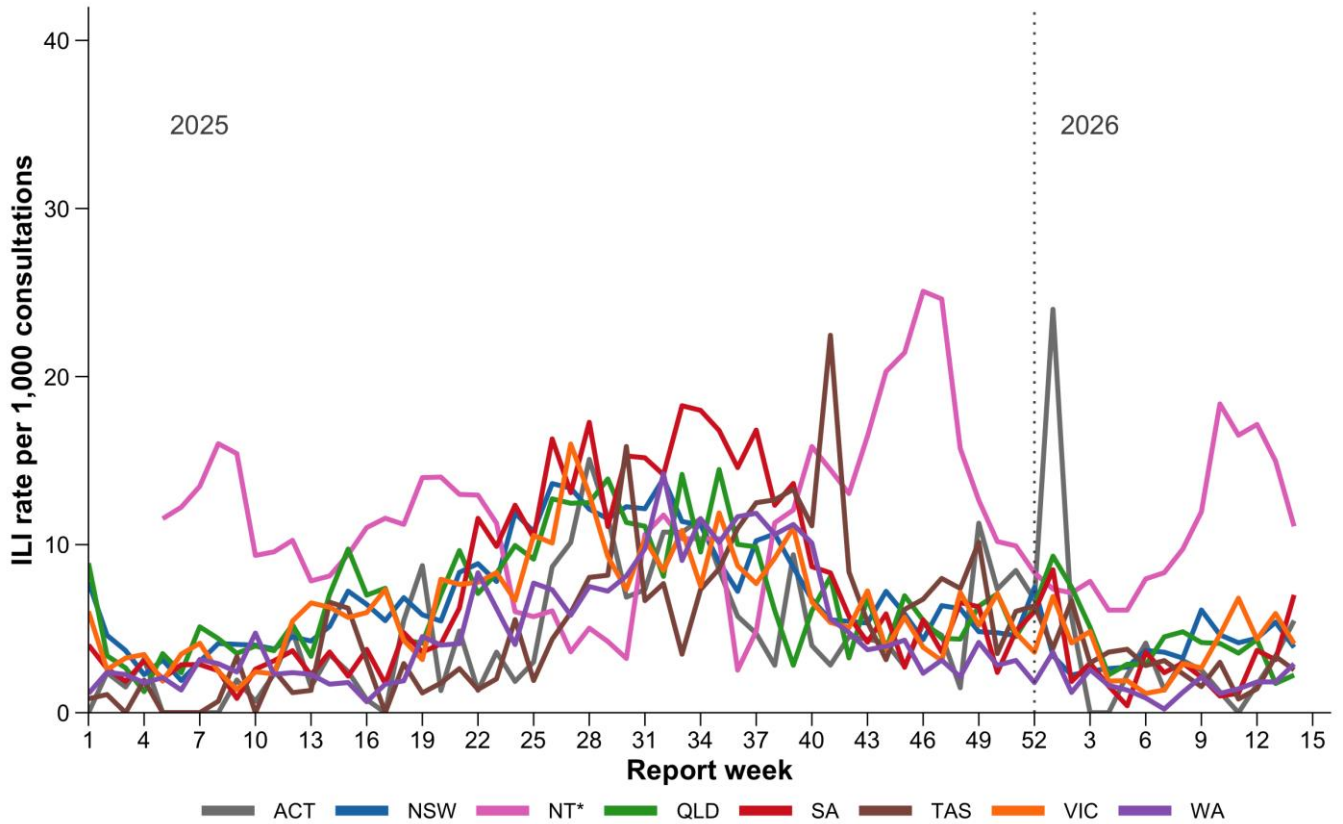


Figure 2. ASPREN ILI rate by jurisdiction, 1 January 2025 – 5 April 2026.



* NT data are presented as a 5 week rolling average due to sparse data.

Figure 3. Map of ILI activity by jurisdiction, week 14, 2026

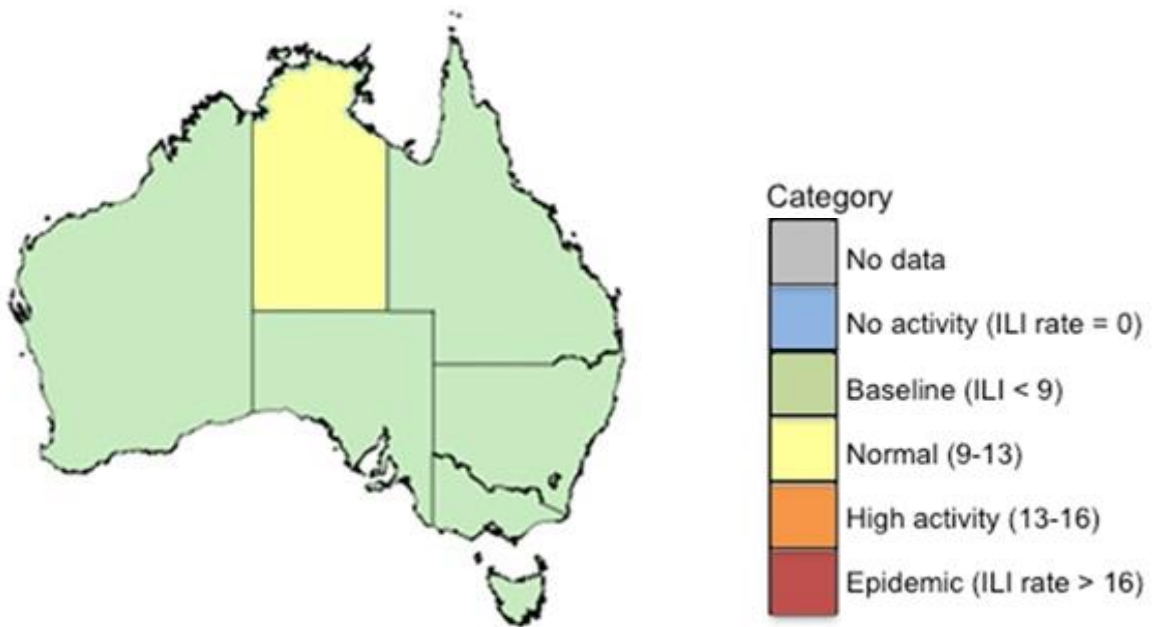
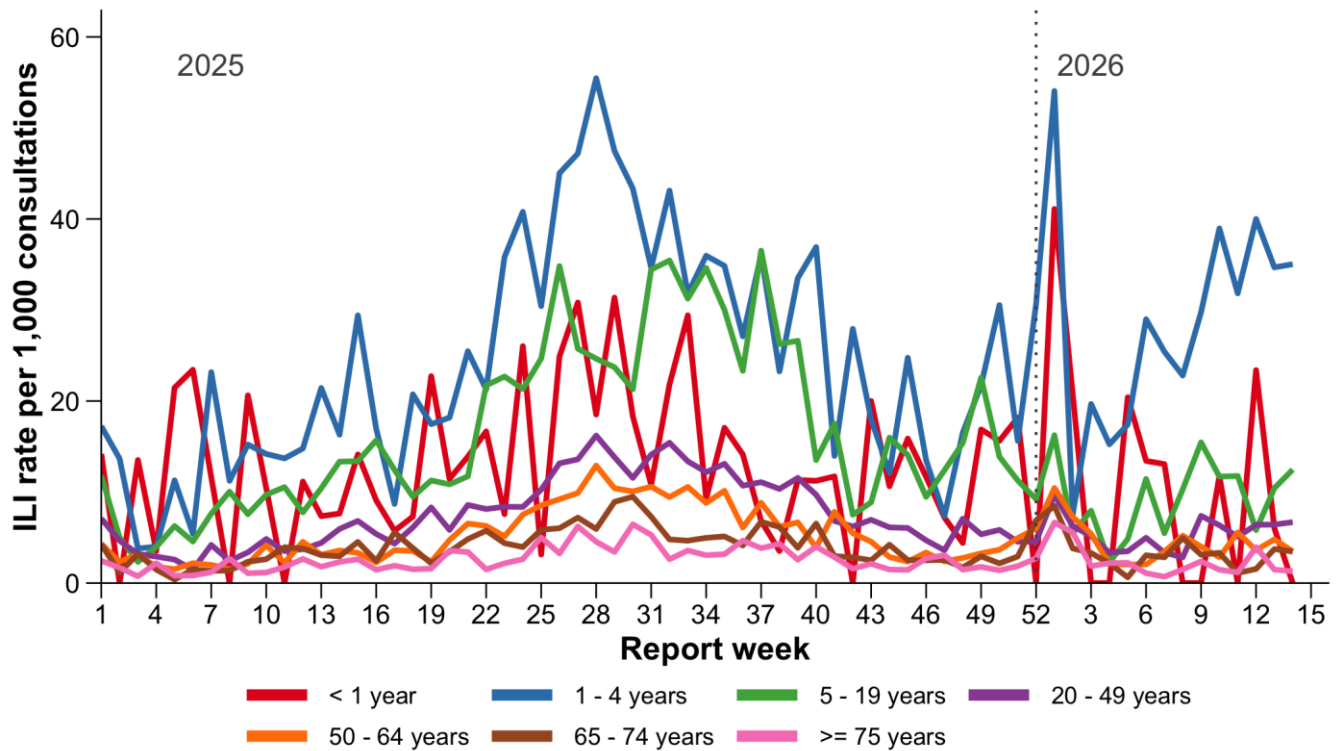


Figure 4. ASPREN ILI rate by age, 1 January 2025 – 5 April 2026.



Summary ILI activity

- ASPREN reporters saw 173 ILI patients in week 13 – 14, 2026.
- Nationally, ILI rates are low and below baseline.
- ILI rates are highest in the NT.
- ILI rates are highest in the 1 – 4 years age group.

Virological Surveillance

Respiratory pathogen activity

Table 2: ASPREN virological surveillance summary, 2026.

Indicator	Current fortnight 23 March – 5 April 2026	Previous fortnight 9 March – 22 March 2026	YTD 29 December 2025 – 5 April 2026
Number of ILI notifications	173	164	1035
Number of swab tests performed	86	76	455
Proportion of swab tests positive for influenza	3%	5%	7%
Proportion of swab tests positive for influenza A	3%	3%	6%
Proportion of swab tests positive for influenza B	0%	3%	1%
Proportion of swab tests positive for COVID-19	2%	7%	4%
Proportion of swab tests positive for RSV	3%	5%	4%
Proportion of swab tests positive for any pathogen	8%	17%	15%

Figure 5. ASPREN weekly virological detection of respiratory pathogens, 2026.

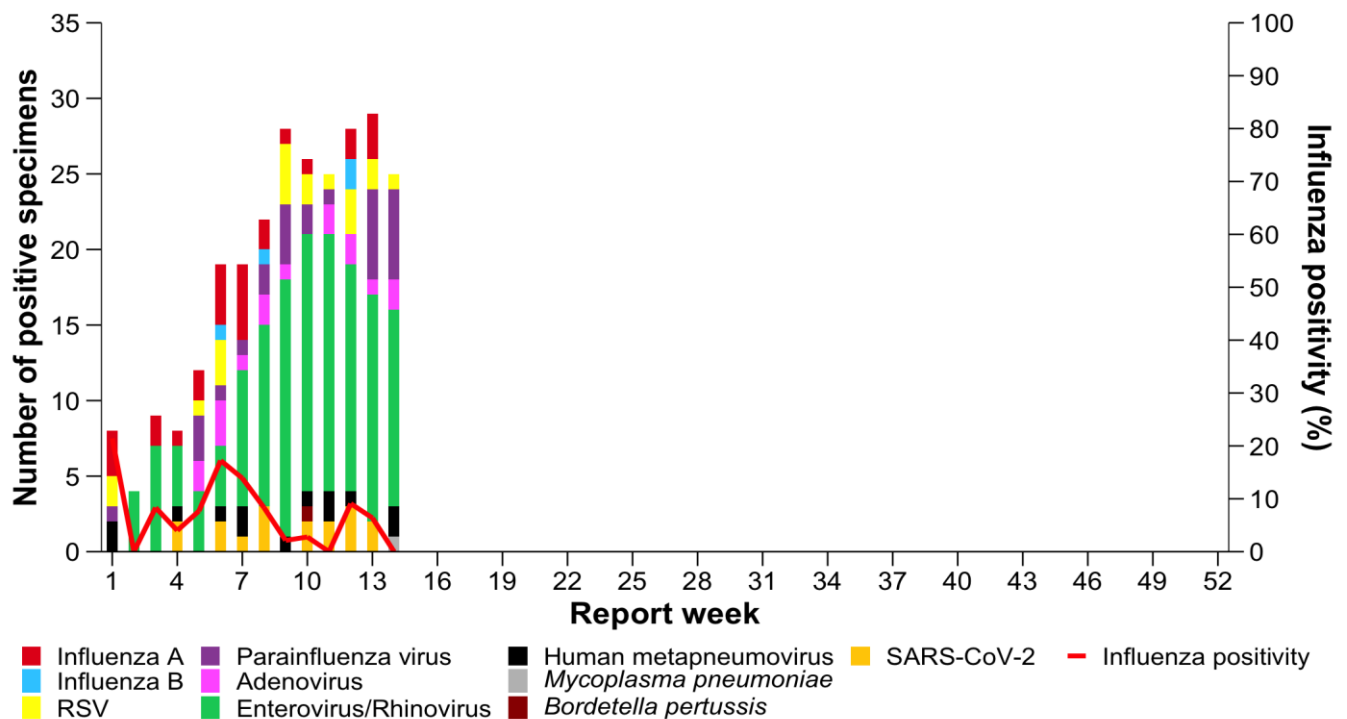


Figure 6: ASPREN weekly virological detection of influenza by type and subtype, RSV and COVID-19, 2026.

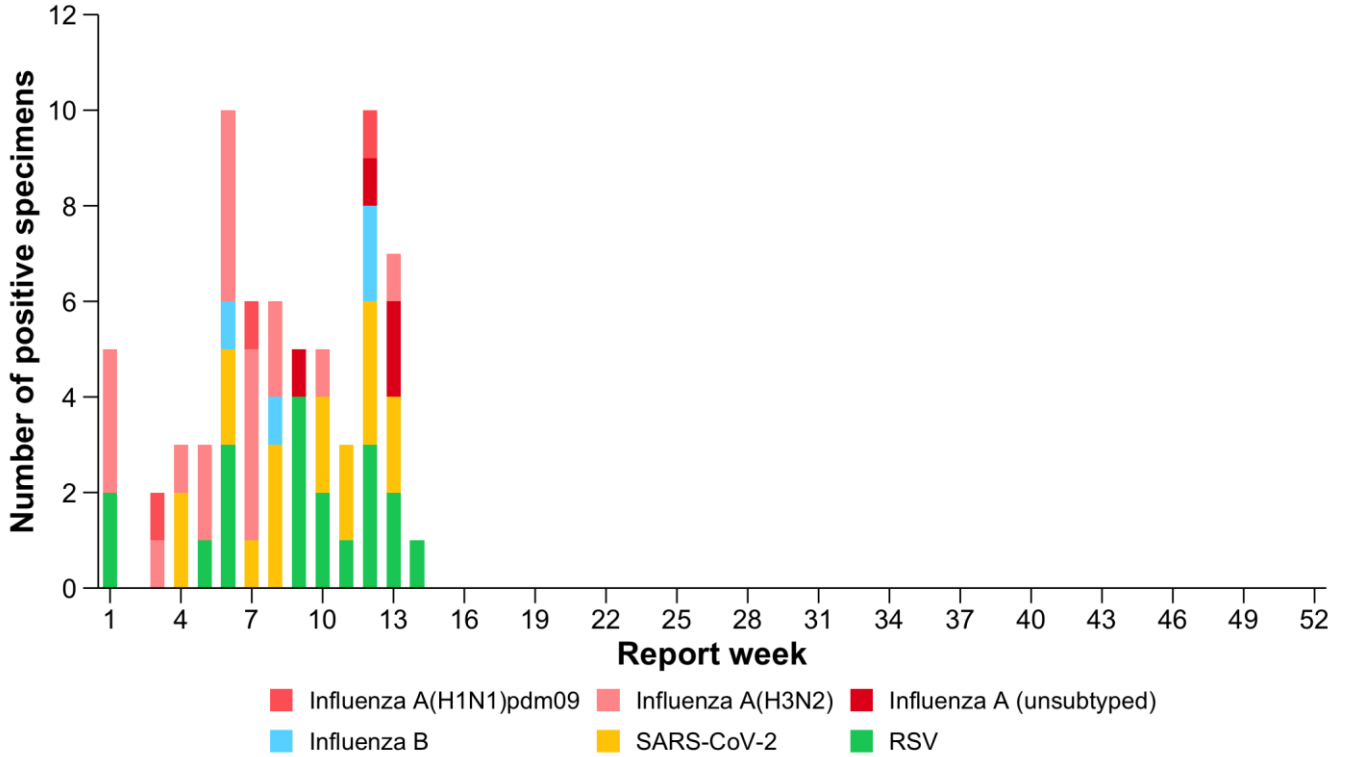


Figure 7: ASPREN virological detection by jurisdiction, 2026.

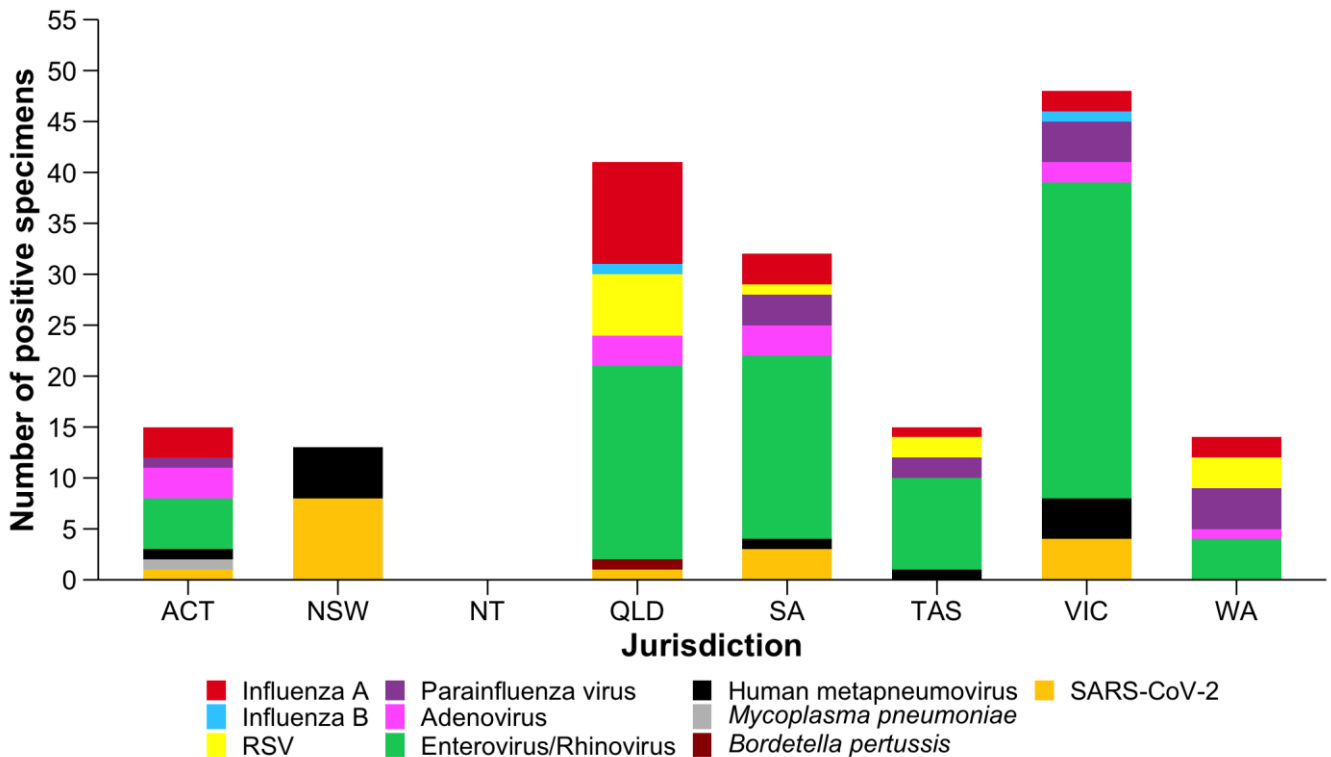


Table 3: ASPREN respiratory pathogen positivity by age group*, 2026.

Pathogen	<1 year	1 – 4 years	5 – 19 years	20 – 49 years	50 – 64 years	65 – 74 years	>= 75 years
Influenza A	3%	16%	16%	31%	19%	12%	3%
Influenza A (H1N1)pdm09	0%	33%	0%	33%	33%	0%	0%
Influenza A (H3N2)	5%	19%	14%	29%	14%	19%	0%
Influenza A (H3N2) subclade K	8%	33%	17%	17%	17%	8%	0%
Influenza B	0%	0%	100%	0%	0%	0%	0%
COVID-19	0%	29%	18%	29%	6%	12%	6%
RSV	16%	21%	26%	16%	11%	11%	0%
NIRV positive	5%	22%	18%	29%	12%	8%	6%
Positive for other respiratory pathogen[#]	4%	21%	18%	30%	13%	9%	5%
Negative for all pathogens	1%	8%	11%	37%	20%	14%	9%

* Proportion positivity was calculated as the number of specimens detected in each age group divided by the total number of specimens detected.

Other respiratory pathogens are parainfluenza virus 1, 2, 3, human metapneumovirus, adenovirus, enterovirus / rhinovirus, *Mycoplasma pneumoniae*, and *Bordetella pertussis*.

Summary virological activity

- Enterovirus / rhinovirus is the most commonly circulating pathogen in this reporting period and year to date.
- 3 cases of influenza A were detected in this reporting period. 1 case was influenza A(H3N2) subclade K and 2 were unable to be subtyped.
- 3 cases of RSV were detected this reporting period.
- COVID-19 detections decreased this period with 2 cases detected (2% positivity).
- There has been an increase in parainfluenza virus cases during the reporting period with 12 cases detected, with the majority of these being attributed to parainfluenza-1.

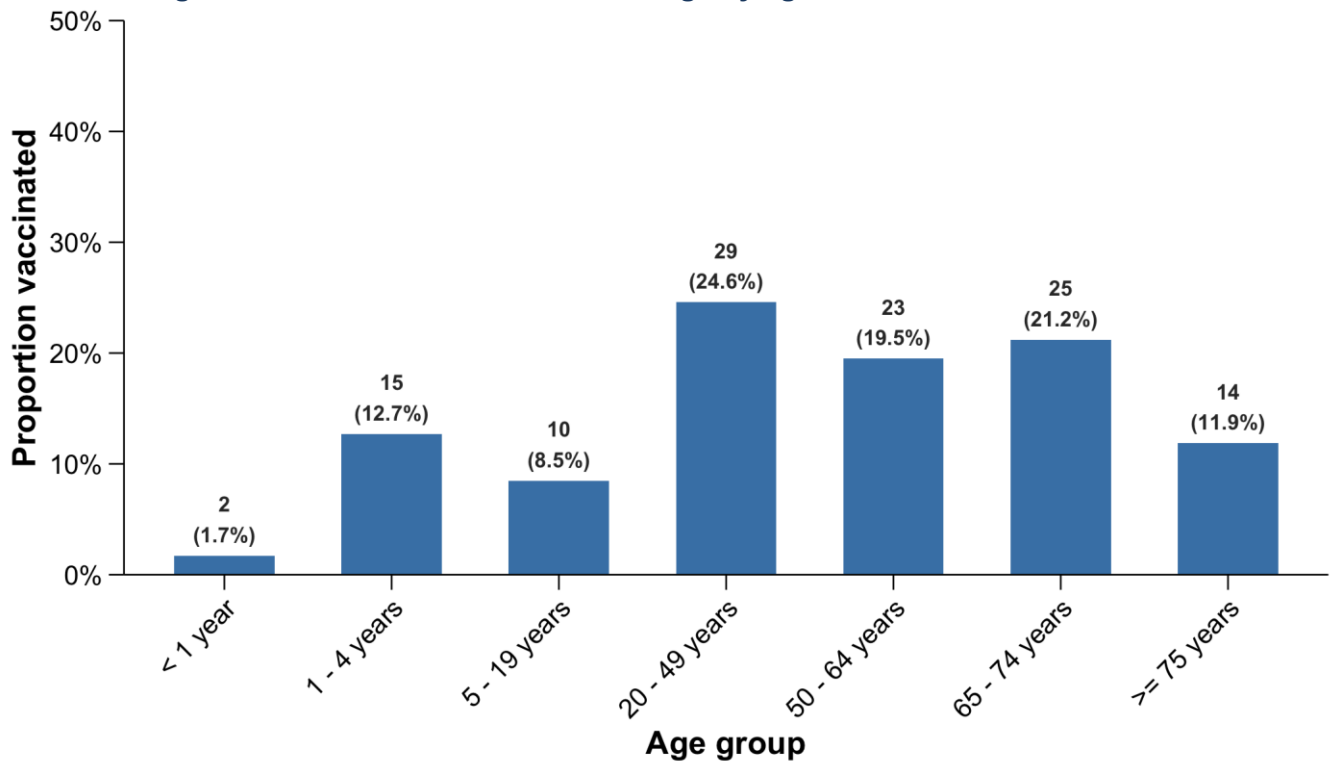
Vaccination Coverage

Vaccination coverage

Table 4: ASPREN vaccination coverage by year, 2024 – 2026.

Vaccine	Vaccinated	Not vaccinated	Unknown vaccination status	% vaccinated 2026 YTD (n)	% vaccinated 2025 (n)	% vaccinated 2024 (n)
Influenza	118	329	8	26% (118)	36% (1,147)	36% (975)
COVID-19	13	418	24	3% (13)	8% (251)	N/A
RSV < 6 months	3	0	0	100% (3)	49% (18)	20% (8)
RSV > 6 months	17	337	96	5% (17)	4% (98)	1% (11)

Figure 8: Influenza vaccination coverage by age and influenza status, 2026.



Summary vaccination coverage and vaccine effectiveness

- It is too early in the season for interpretation of vaccine coverage. The 2026 seasonal influenza vaccine is now available from this week.