



Reporting period: Week 11–12, 2026  
(9 – 22 March 2026)

**Summary: The Northern Territory (NT) is experiencing moderate influenza-like illness (ILI) activity. Enterovirus / rhinovirus is the most commonly circulating pathogen.**



Influenza-like-illness levels are increasing

5%

Influenza positivity during the reporting period.

29

Case of influenza have been detected this year:  
25 x Influenza A  
4 x Influenza B

4

Case of influenza have been detected in this reporting period  
2 x Influenza A  
2 x Influenza B

## Key messages

- ILI rates are low and below baseline, with the exception of the NT where there is moderate activity.
- Enterovirus / rhinovirus activity has increased from the previous fortnight, while influenza detections have decreased. Enterovirus / rhinovirus is the most commonly circulating pathogen in this reporting period.

# Participation

310 reporters have submitted data to ASPREN this fortnight (331 YTD), throughout all 8 jurisdictions. Reporters undertook a total of 47,407 patient consultations during the reporting period.

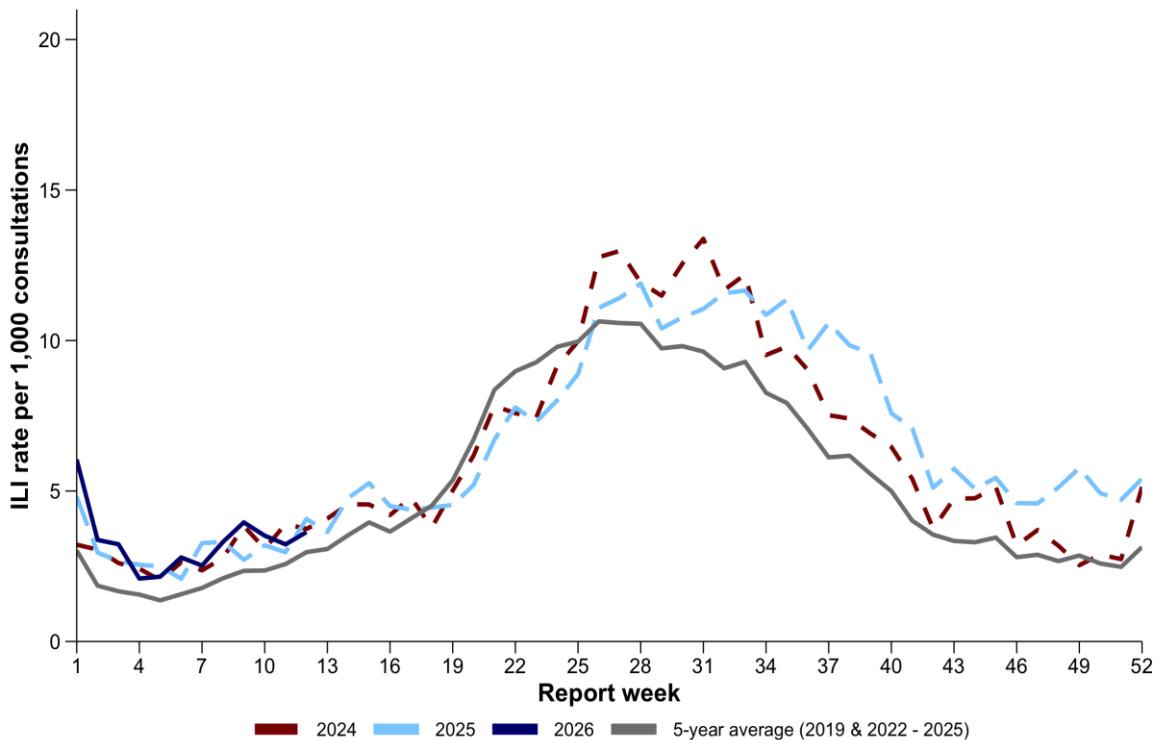
**Table 1. ASPREN reporter participation, weeks 11-12, 2026.**

Jurisdiction	Reporters	Consultations	Proportion	ABS population proportion
ACT	21	2,326	6.8%	1.76%
NSW	84	14,439	27.1%	31.1%
NT	3	344	1%	0.96%
QLD	34	7,013	11%	20.5%
SA	43	5,581	13.9%	6.89%
TAS	22	2,427	7.1%	2.09%
VIC	42	6,170	13.5%	25.6%
WA	61	9,107	19.7%	11%
<b>Australia</b>	<b>310</b>	<b>47,407</b>	<b>100%</b>	<b>100%</b>

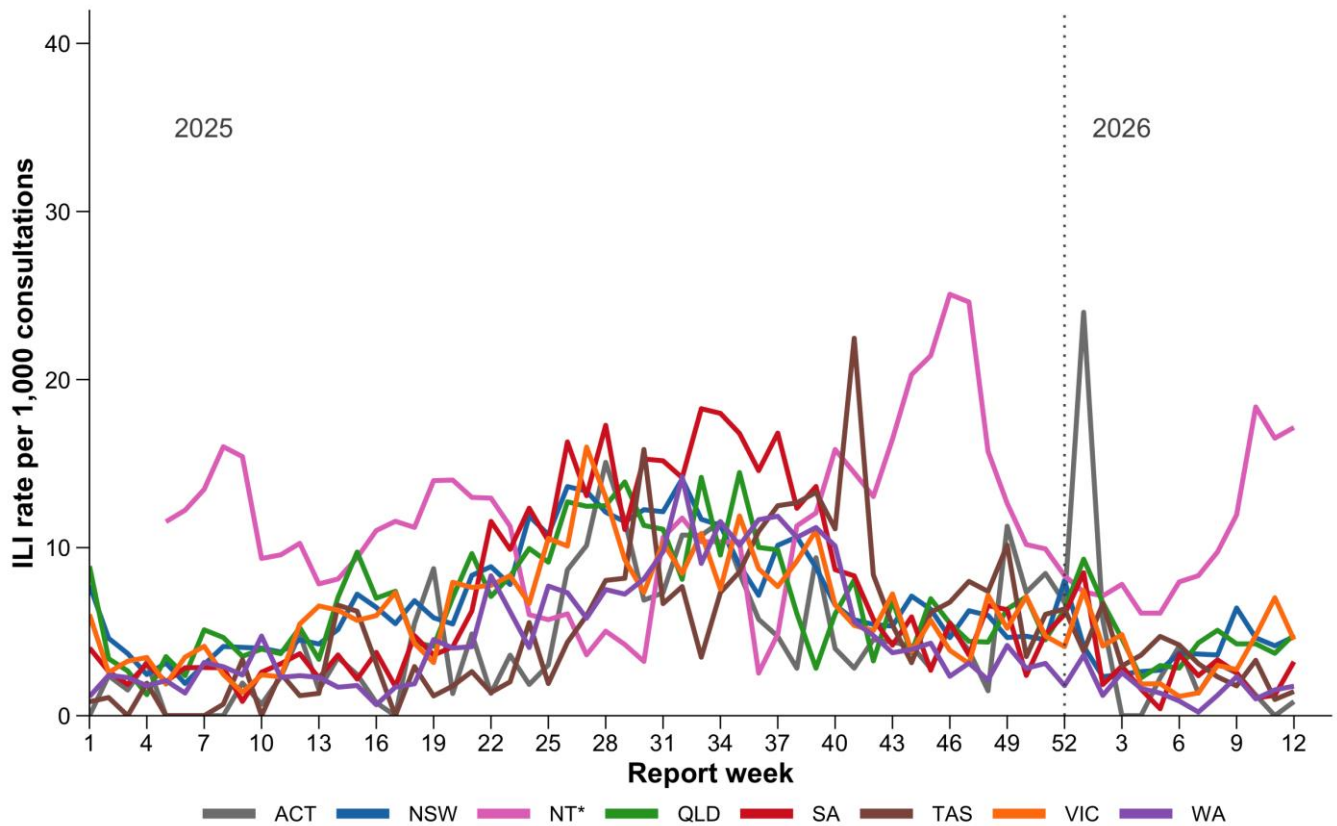
# Syndromic Surveillance

## Influenza-like illness (ILI)

**Figure 1. ASPREN ILI rate per 100,000 consultations, 1 January 2024 – 22 March 2026.**



**Figure 2. ASPREN ILI rate by jurisdiction, 1 January 2025 – 22 March 2026.**



\* NT data are presented as a 5 week rolling average due to sparse data.

**Figure 3. Map of ILI activity by jurisdiction, week 12, 2026**

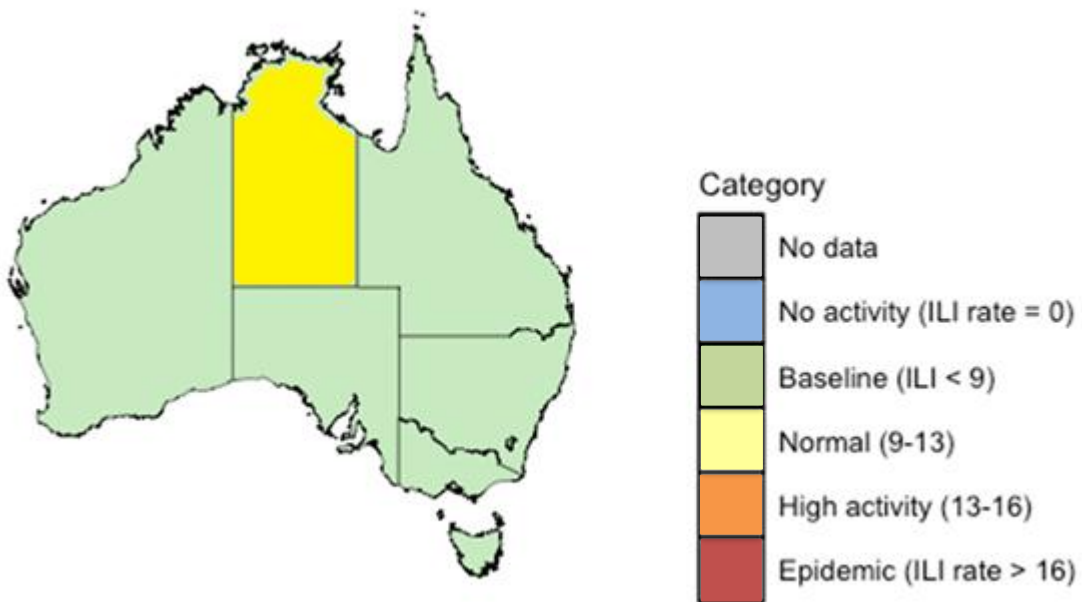
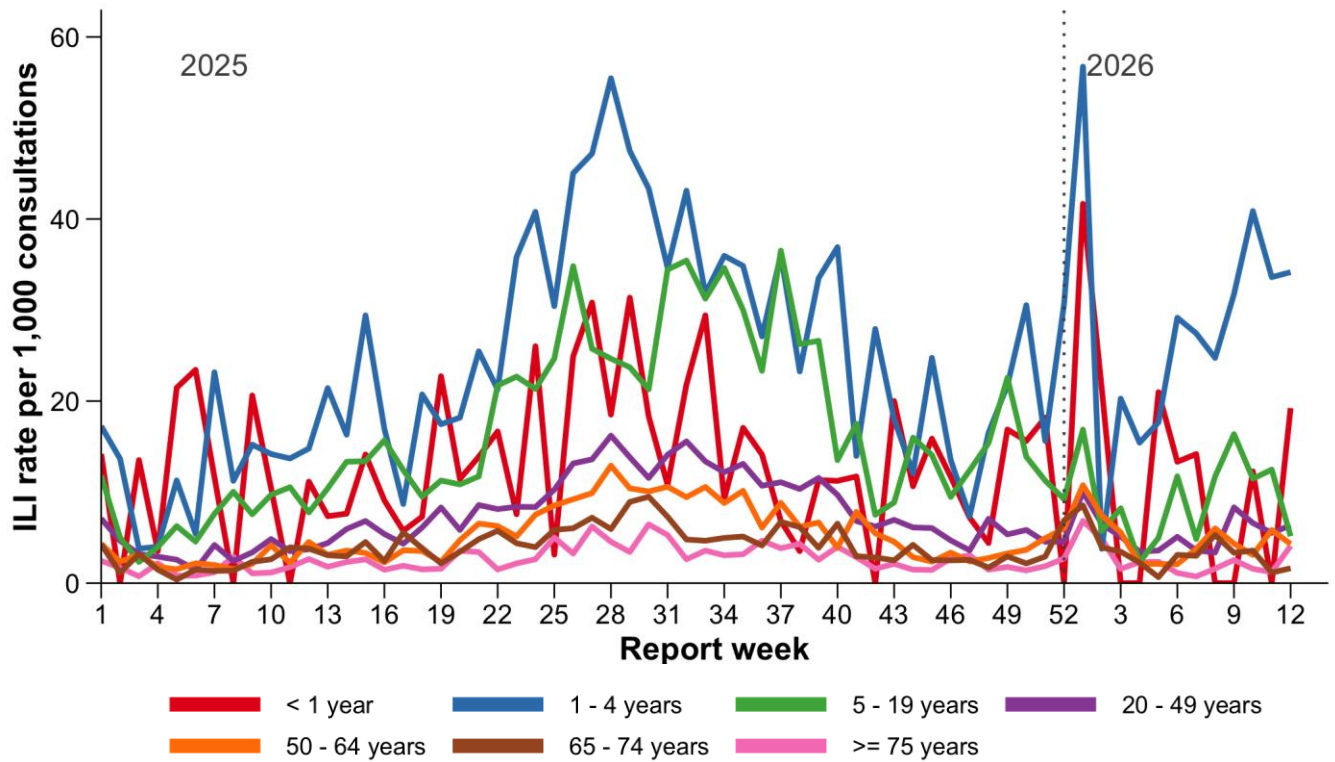


Figure 4. ASPREN ILI rate by age, 1 January 2025 – 22 March 2026.



### Summary ILI activity

- ASPREN reporters saw 163 ILI patients in week 11 – 12, 2026.
- Nationally, ILI rates are low and below baseline.
- ILI rates are highest in the NT.
- ILI rates are highest in the 1 – 4 years age group.

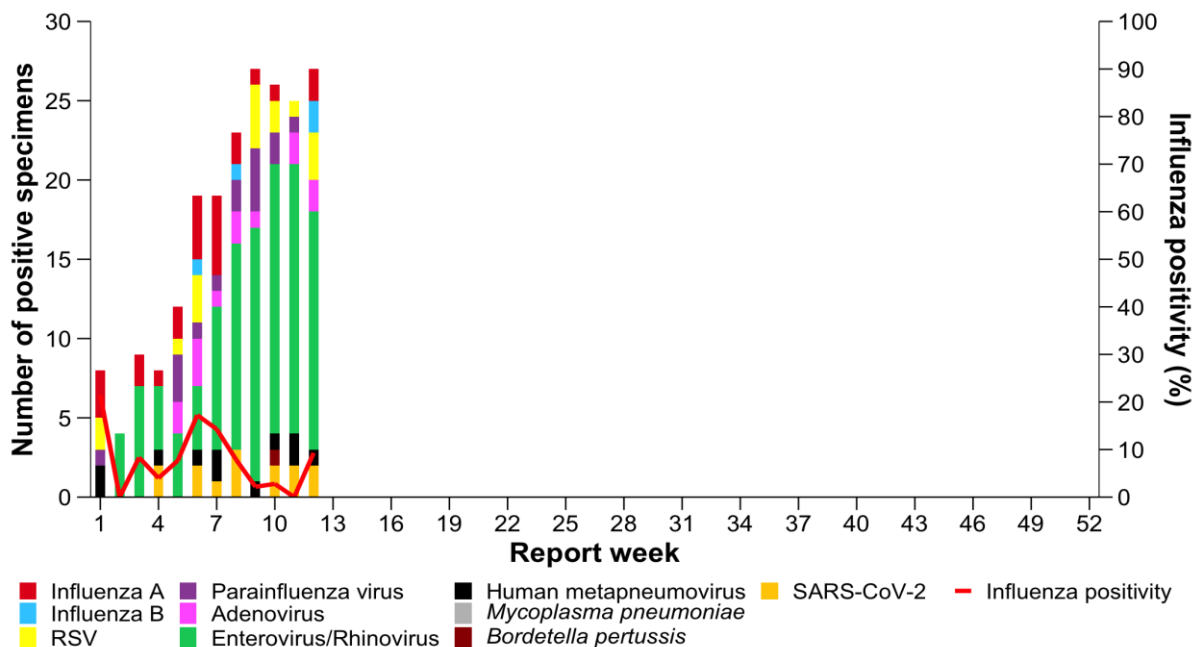
# Virological Surveillance

## Respiratory pathogen activity

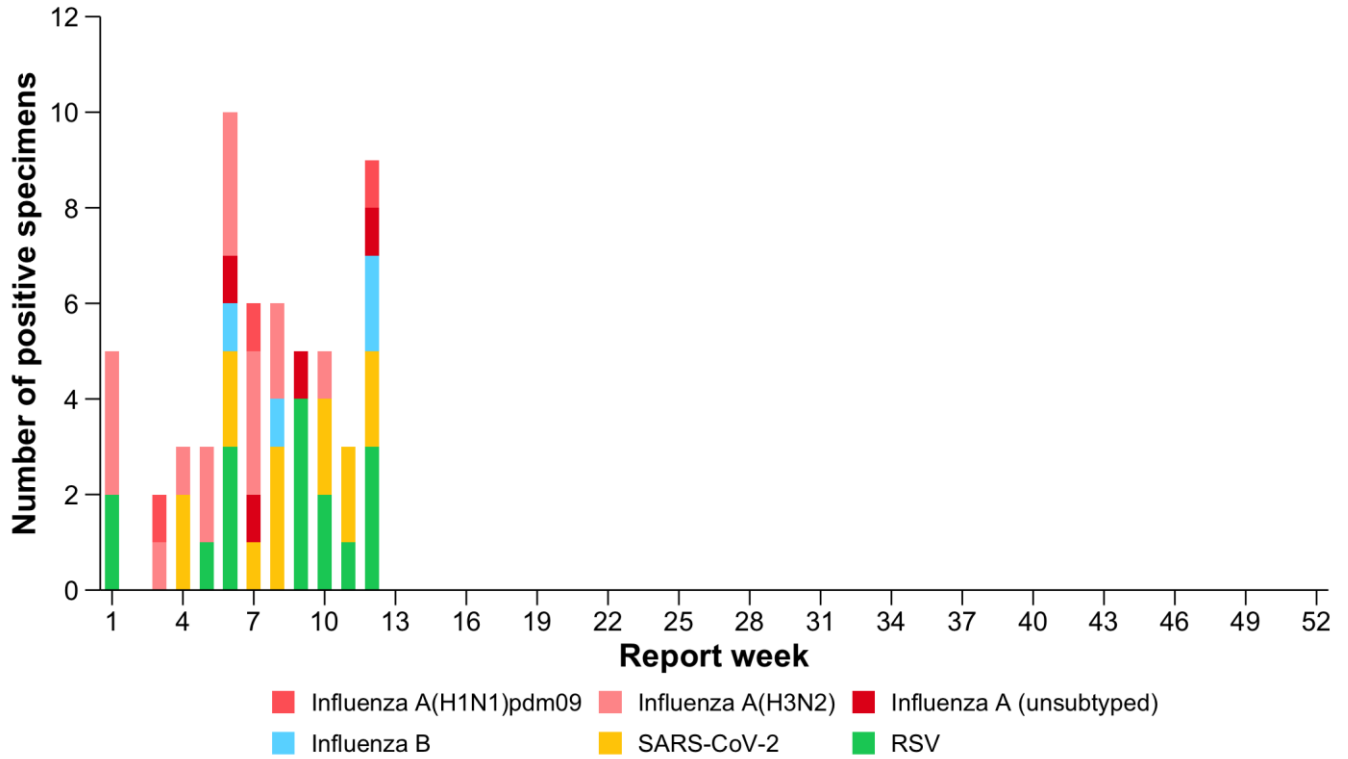
Table 2: ASPREN virological surveillance summary, 2026.

Indicator	Current fortnight 9 –22 March 2026	Previous fortnight 23 February – 8 March 2026	YTD 29 December 2025 – 22 March 2026
Number of ILI notifications	163	180	867
Number of swab tests performed	75	82	368
Proportion of swab tests positive for influenza	5%	2%	8%
Proportion of swab tests positive for influenza A	3%	2%	7%
Proportion of swab tests positive for influenza B	3%	0%	1%
Proportion of swab tests positive for COVID-19	5%	2%	4%
Proportion of swab tests positive for RSV	5%	7%	4%
Proportion of swab tests positive for any pathogen	16%	11%	16%

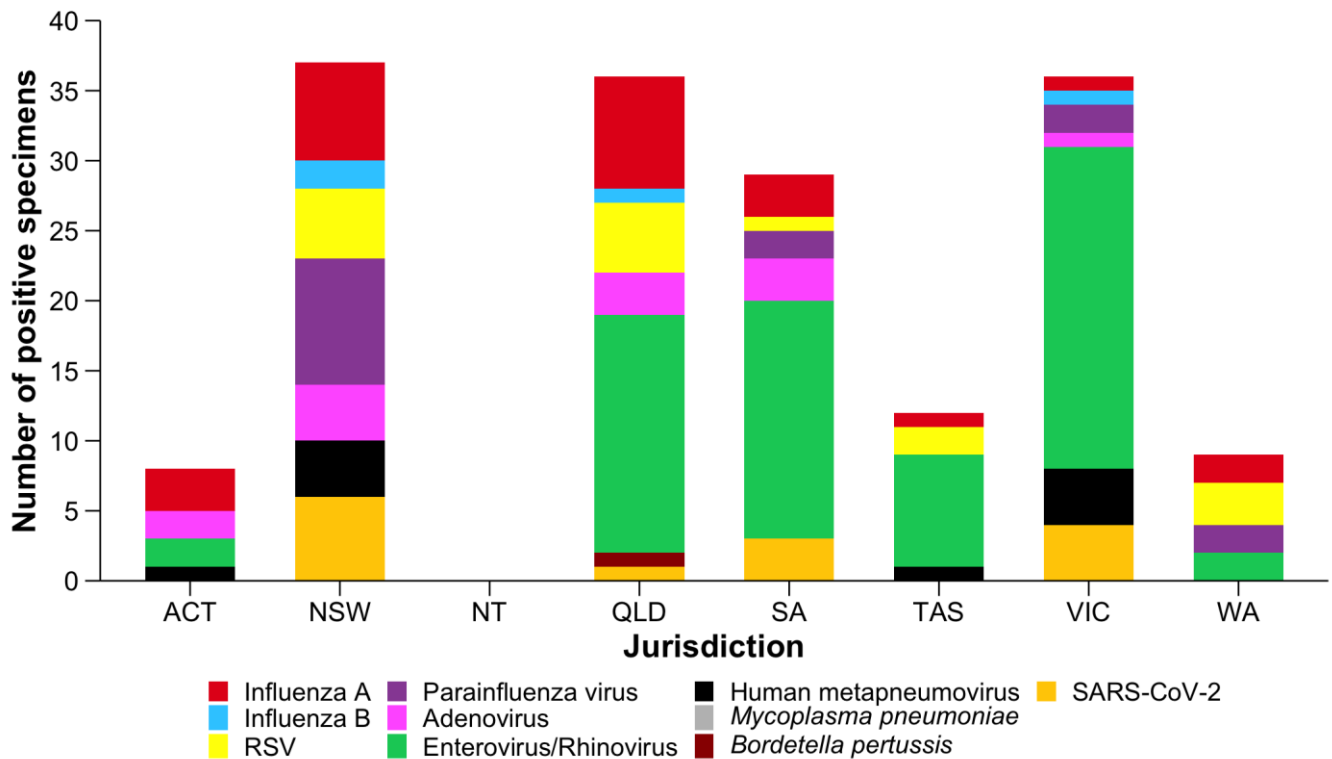
Figure 5. ASPREN weekly virological detection of respiratory pathogens, 2026.



**Figure 6: ASPREN weekly virological detection of influenza by type and subtype, RSV and COVID-19, 2026.**



**Figure 7: ASPREN virological detection by jurisdiction, 2026.**



**Table 3: ASPREN respiratory pathogen positivity by age group\*, 2026.**

Pathogen	<1 year	1 – 4 years	5 – 19 years	20 – 49 years	50 – 64 years	65 – 74 years	>= 75 years
<b>Influenza A</b>	3.40%	13.80%	17.20%	31%	17.20%	13.80%	3.40%
<b>Influenza A (H1N1)pdm09</b>	0%	33.30%	0%	33.30%	33.30%	0%	0%
<b>Influenza A (H3N2)</b>	5.60%	16.70%	16.70%	33.30%	16.70%	11.10%	0%
<b>Influenza A (H3N2) subclade K</b>	9.10%	27.30%	18.20%	18.20%	18.20%	9.10%	0%
<b>Influenza B</b>	0%	0%	0%	0%	0%	0%	0%
<b>COVID-19</b>	0%	35.70%	21.40%	21.40%	7.10%	7.10%	7.10%
<b>RSV</b>	18.80%	25%	31.20%	6.20%	12.50%	6.20%	0%
<b>NIRV positive</b>	6.50%	20.70%	17.80%	27.20%	13%	8.30%	6.50%
<b>Positive for other respiratory pathogen<sup>#</sup></b>	5.70%	19.60%	18%	28.40%	13.40%	9.30%	5.70%
<b>Negative for all pathogens</b>	1.20%	7.10%	11.80%	36.70%	20.10%	15.40%	7.70%

\* Proportion positivity was calculated as the number of specimens detected in each age group divided by the total number of specimens detected.

# Other respiratory pathogens are parainfluenza virus 1, 2, 3, human metapneumovirus, adenovirus, enterovirus / rhinovirus, *Mycoplasma pneumoniae*, and *Bordetella pertussis*.

## Summary virological activity

- Enterovirus / rhinovirus is the most commonly circulating pathogen in this reporting period and year to date.
- 2 cases of influenza A and 2 cases of influenza B were detected in this reporting period. 1 case was influenza A(H1N1)pdm09 and 1 was unable to be subtyped.
- 4 cases of RSV were detected this reporting period.
- COVID-19 detections increased this period with 4 cases detected.

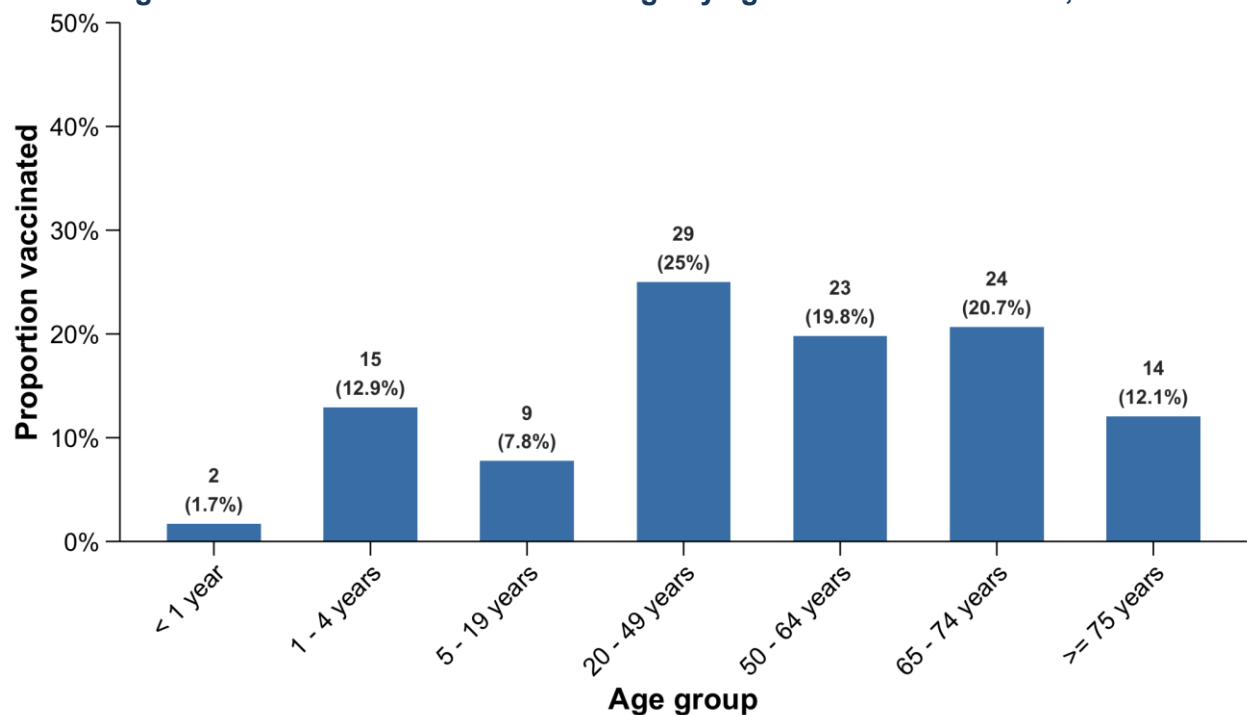
# Vaccination Coverage

## Vaccination coverage

**Table 4: ASPREN vaccination coverage by year, 2024 – 2026.**

Vaccine	Vaccinated	Not vaccinated	Unknown vaccination status	% vaccinated 2026 YTD (n)	% vaccinated 2025 (n)	% vaccinated 2024 (n)
Influenza	116	245	7	32% (116)	36% (1,147)	40% (975)
COVID-19	10	341	17	3% (10)	8% (251)	N/A
RSV < 6 months	3	0	0	100% (3)	24% (8)	18% (7)
Maternal RSV	4	N/A	N/A	80% (4)	29% (10)	4% (1)
RSV > 6 months	12	275	81	4% (12)	4% (98)	1% (11)

**Figure 8: Influenza vaccination coverage by age and influenza status, 2026.**



## Summary vaccination coverage and vaccine effectiveness

- It is too early in the season for interpretation of vaccine coverage. The 2026 seasonal influenza vaccine will be available in April.