

**NATIONAL PRIMARY CARE INFECTIOUS DISEASES
SENTINEL SURVEILLANCE FORTNIGHTLY REPORT**

From The Australian Sentinel Practices Research Network (ASPREN) *

No. 16, 2023 - 31st July — 13th August 2023

NATIONAL SUMMARY



Influenza-like-illness levels are decreasing

25

Case of influenza have been detected in this reporting period
8 x Influenza A
17 x Influenza B

17%

Influenza positivity during the reporting period.

223

Cases of influenza have been detected this year:
131 x Influenza A
92 x Influenza B



Gastroenteritis levels remain steady below baseline levels

**SYNDROMIC SURVEILLANCE
REPORTING**

Reports were received from 273 reporters from 8 states and territories during the reporting period. During weeks 31 and 32 reporters saw a total of 42,902 patients.

INFLUENZA-LIKE-ILLNESS (ILI)

Nationally, ILI notifications slightly decreased during the period with 336 notifications being reported in weeks 31—32. ILI rates reported in this period were 9 and 8 cases per 1000 consultations (weighted). This was slightly lower than the previous fortnight where rates were 10 cases per 1000 consultations in weeks 29 and 30. For the same reporting period in 2022, ILI rates were lower at 7 and 5 cases per 1000 consultations for weeks 31 and 32 respectively (see Fig. 5).

GASTROENTERITIS

Nationally, gastroenteritis notifications increased to 97 notifications reported. Gastroenteritis rates reported in this period remained steady at 2 cases per 1000 consultations in weeks 31 and 32, compared to 2 cases per 1000 consultations in weeks 29 and 30 (see Fig. 5).

* ASPREN is funded by the Commonwealth's Department of Health, Office of Health Protection, Vaccine Preventable Disease Surveillance Section.

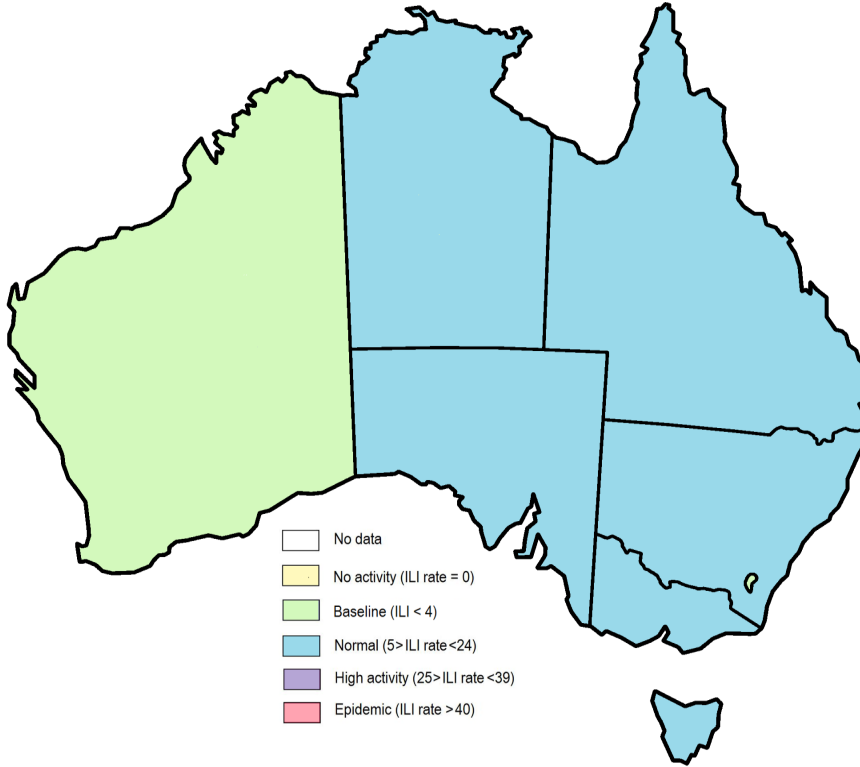


Figure 1. Map of ILI activity by jurisdiction, weeks 31 - 32, 2023.

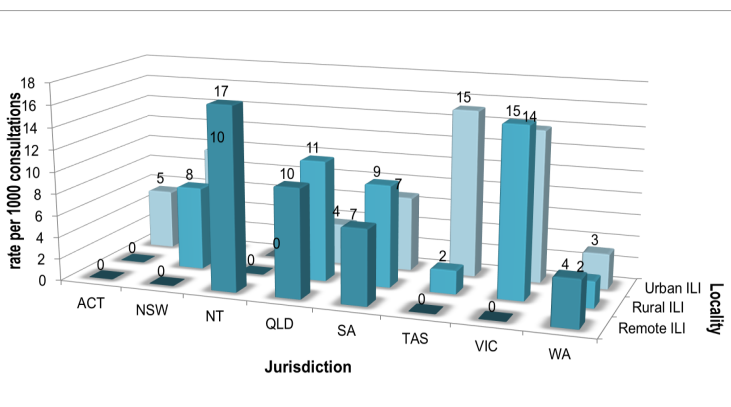


Figure 2. ASPREN rate of ILI by locality and jurisdiction, weeks 31 - 32, 2023.

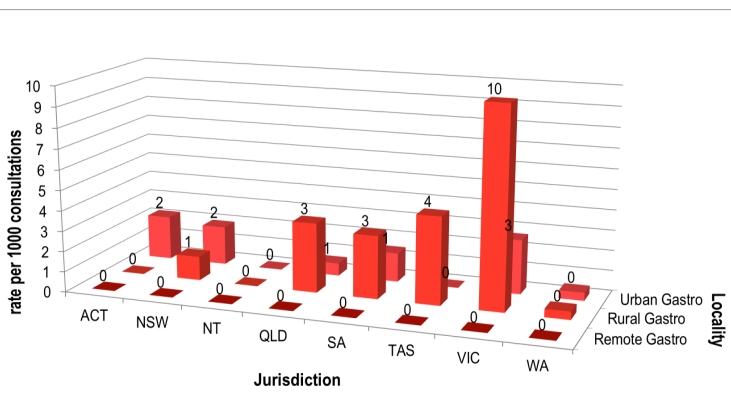


Figure 3. ASPREN rate of gastroenteritis by locality and jurisdiction, weeks 31 - 32, 2023.

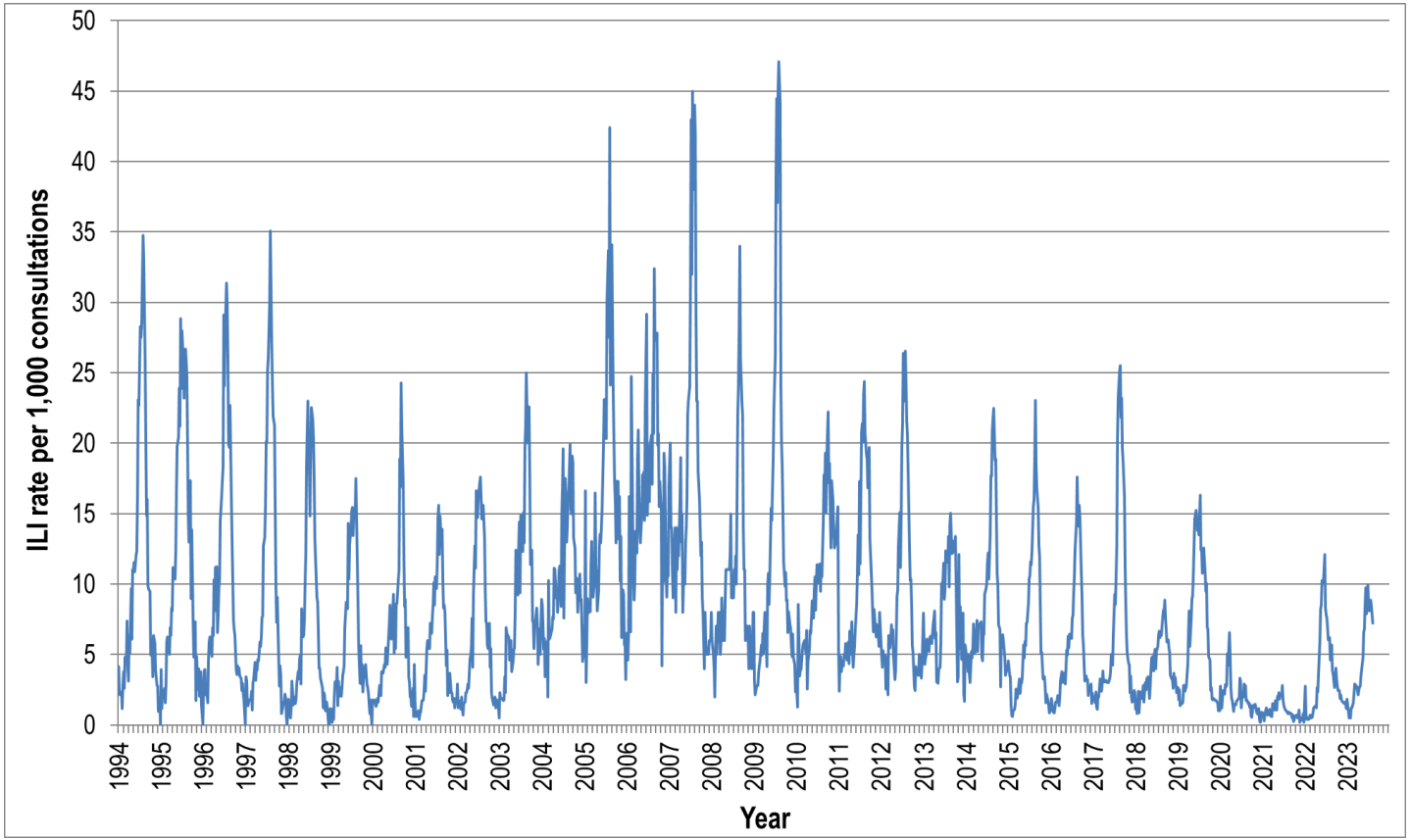


Figure 4. ASPREN ILI rates 1994 - 2023.

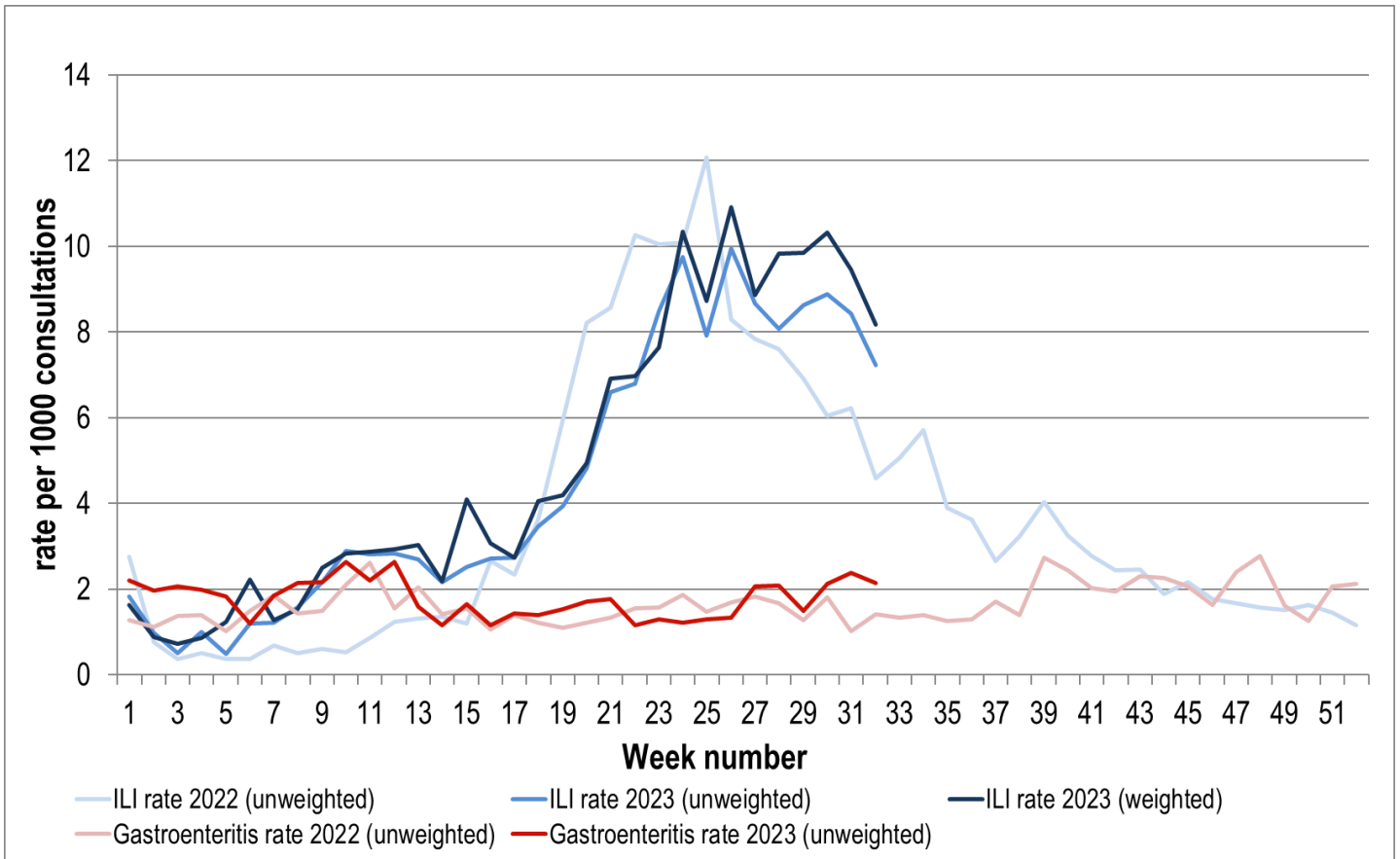


Figure 5. ASPREN ILI and gastroenteritis rates 2022-23. Weighted rates are weighted to account for population size differences between jurisdictions, using population estimates from the 2011 Australian Census.

VIROLOGICAL SURVEILLANCE

44% of all ILI patients were swab tested during weeks 31 and 32 (see Figure 6).

8 cases of Influenza A, 17 cases of Influenza B were detected during this period. There were 37 cases of Rhinovirus detected making it the most common respiratory virus circulating the nation at present (see figure 8).

Viral laboratory data is provided by SA Pathology laboratory.

	Reporting Period	YTD
	31 July - 13 Aug 2023	1 Jan - 13 Aug 2023
Total number of ILI notifications	336	2495
Number of swab tests performed	149	1011
% ILI patients tested	44%	41%
% of swab tests positive for influenza	17%	22%

Figure 6. ASPREN virological surveillance results overview for 2023 #

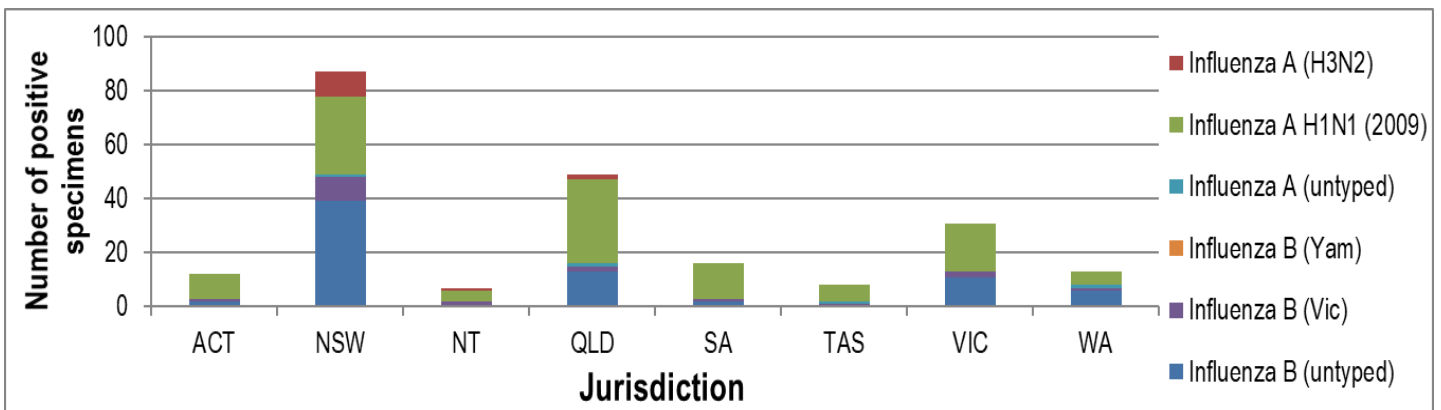


Figure 7. ASPREN influenza subtype analysis by jurisdiction for 2023 #

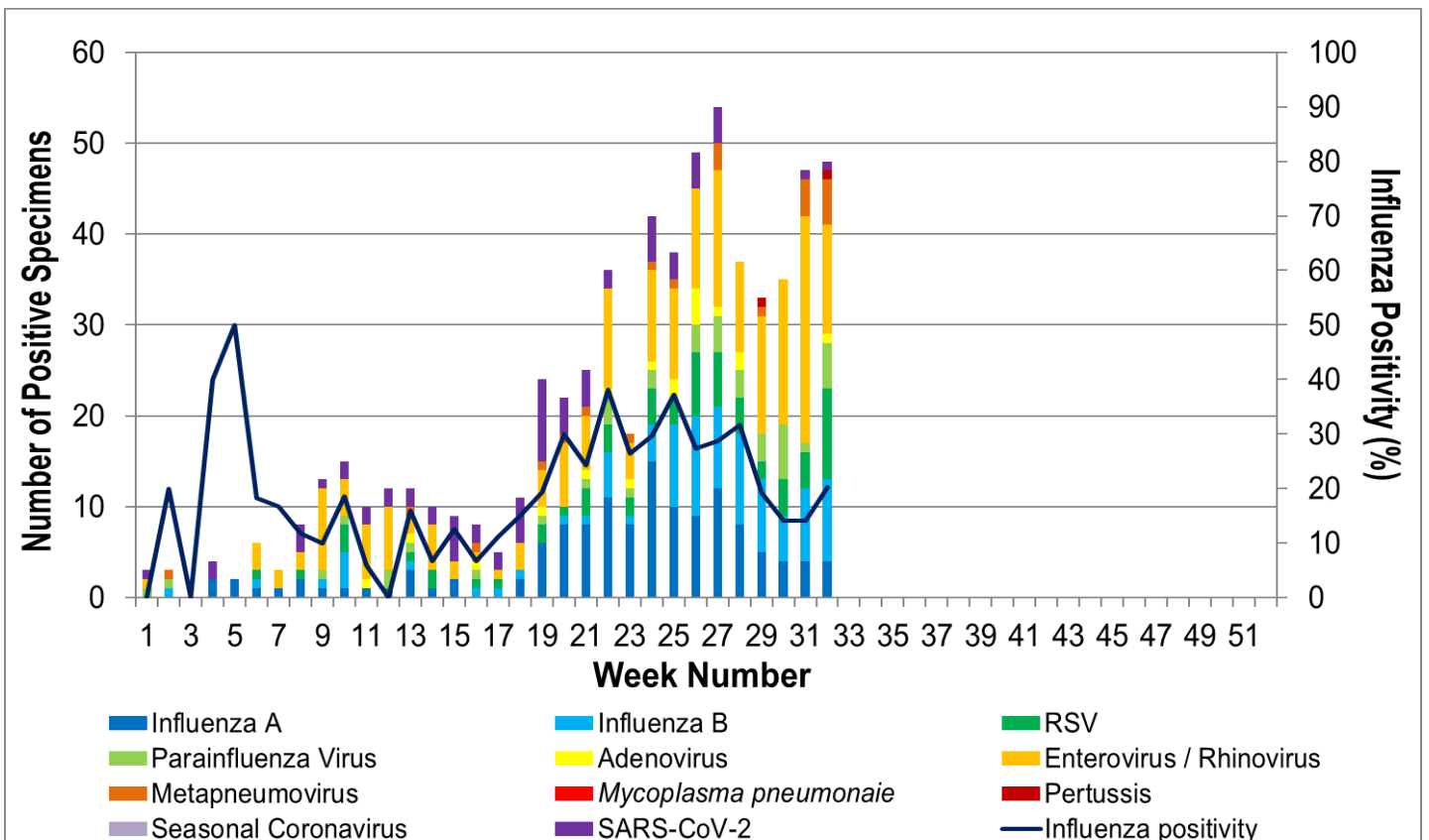


Figure 8. ASPREN, laboratory detection of influenza and other respiratory viruses for 2023 #

The Australian Sentinel Practices Research Network is supported by the Australian Government Department of Health (the Department). The opinions expressed in this paper are those of the authors, and do not necessarily represent the views of the Department.

Please note: This report is based on data available as at 17 August 2023. Delays in the reporting of data may cause data to change retrospectively.