

**NATIONAL PRIMARY CARE INFECTIOUS DISEASES
SENTINEL SURVEILLANCE FORTNIGHTLY REPORT**

From The Australian Sentinel Practices Research Network (ASPREN) *

No. 14, 2023 - 3rd July — 16th July 2023

NATIONAL SUMMARY



Influenza-like-illness levels are decreasing

38

Cases of influenza have been detected in this reporting period
20 x Influenza A
18 x Influenza B

32%

Influenza positivity during the reporting period.

175

Cases of influenza have been detected this year:
114 x Influenza A
61 x Influenza B



Gastroenteritis levels remain steady below baseline levels

**SYNDROMIC SURVEILLANCE
REPORTING**

Reports were received from 240 reporters from 8 states and territories during the reporting period. During weeks 27 and 28 reporters saw a total of 35,763 patients.

INFLUENZA-LIKE-ILLNESS (ILI)

Nationally, ILI notifications increased during the period with 299 notifications being reported in weeks 27–28. ILI rates reported in this period were 9 and 10 cases per 1000 consultations (weighted). This was slightly lower than the previous fortnight where rates were 9 and 11 cases per 1000 consultations in weeks 25 and 26 respectively. For the same reporting period in 2022, ILI rates were lower at 8 cases per 1000 consultations for weeks 27 and 28 (see Fig. 5).

GASTROENTERITIS

Nationally, gastroenteritis notifications significantly increased to 74 notifications reported. Gastroenteritis rates reported in this period slightly increased to 2 cases per 1000 consultations in weeks 27 and 28, compared to 1 case per 1000 consultations in weeks 25 and 26 (see Fig. 5).

* ASPREN is funded by the Commonwealth's Department of Health, Office of Health Protection, Vaccine Preventable Disease Surveillance Section.

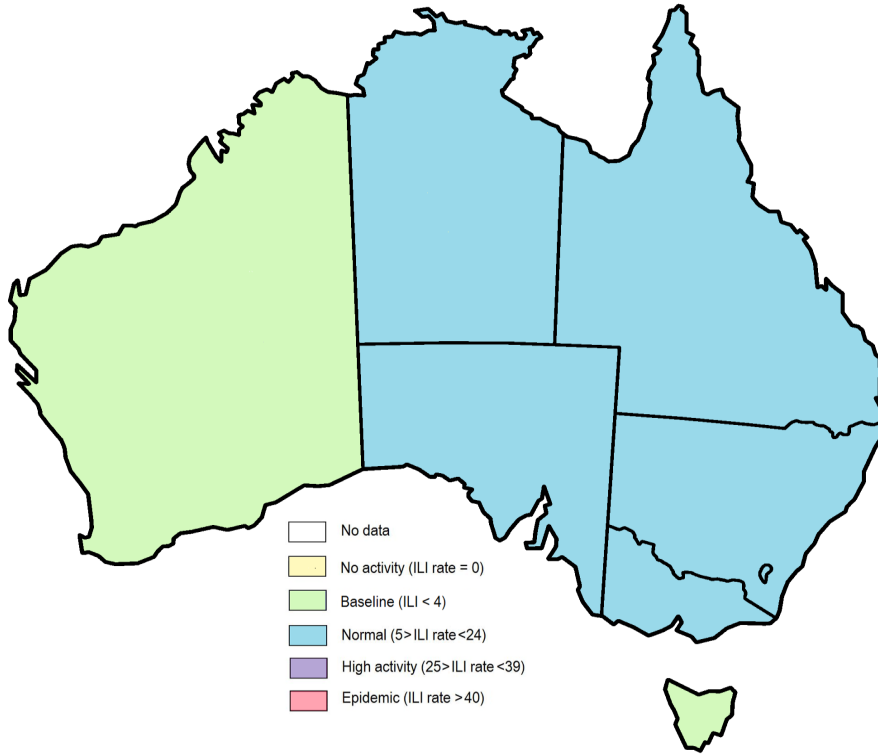


Figure 1. Map of ILI activity by jurisdiction, weeks 27 - 28, 2023.

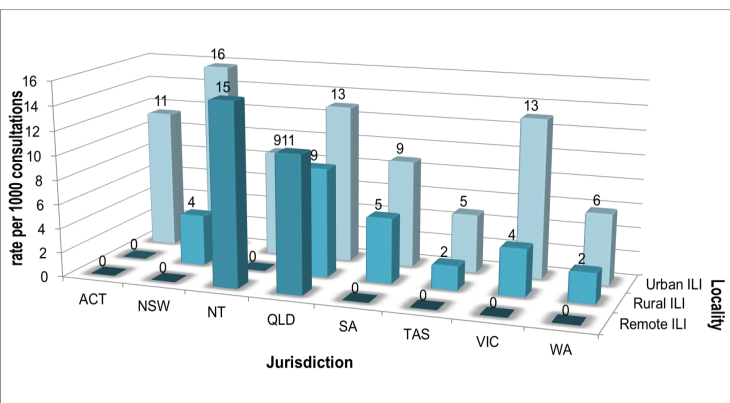


Figure 2. ASPREN rate of ILI by locality and jurisdiction, weeks 27 - 28, 2023.

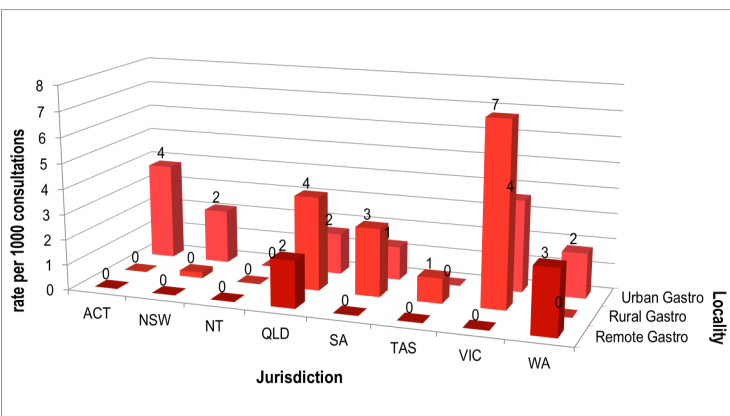


Figure 3. ASPREN rate of gastroenteritis by locality and jurisdiction, weeks 27 - 28, 2023.

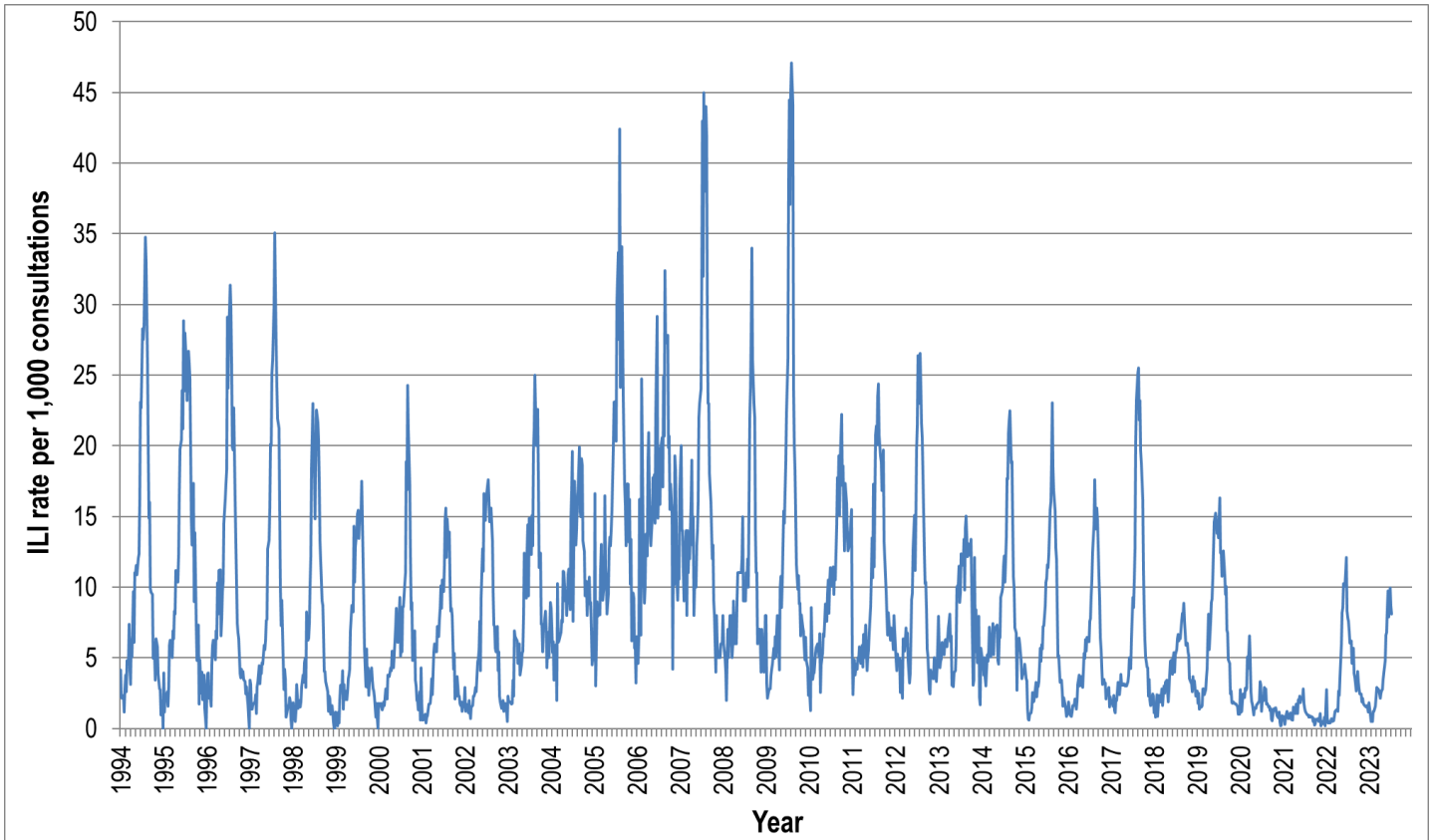


Figure 4. ASPREN ILI rates 1994 - 2023.

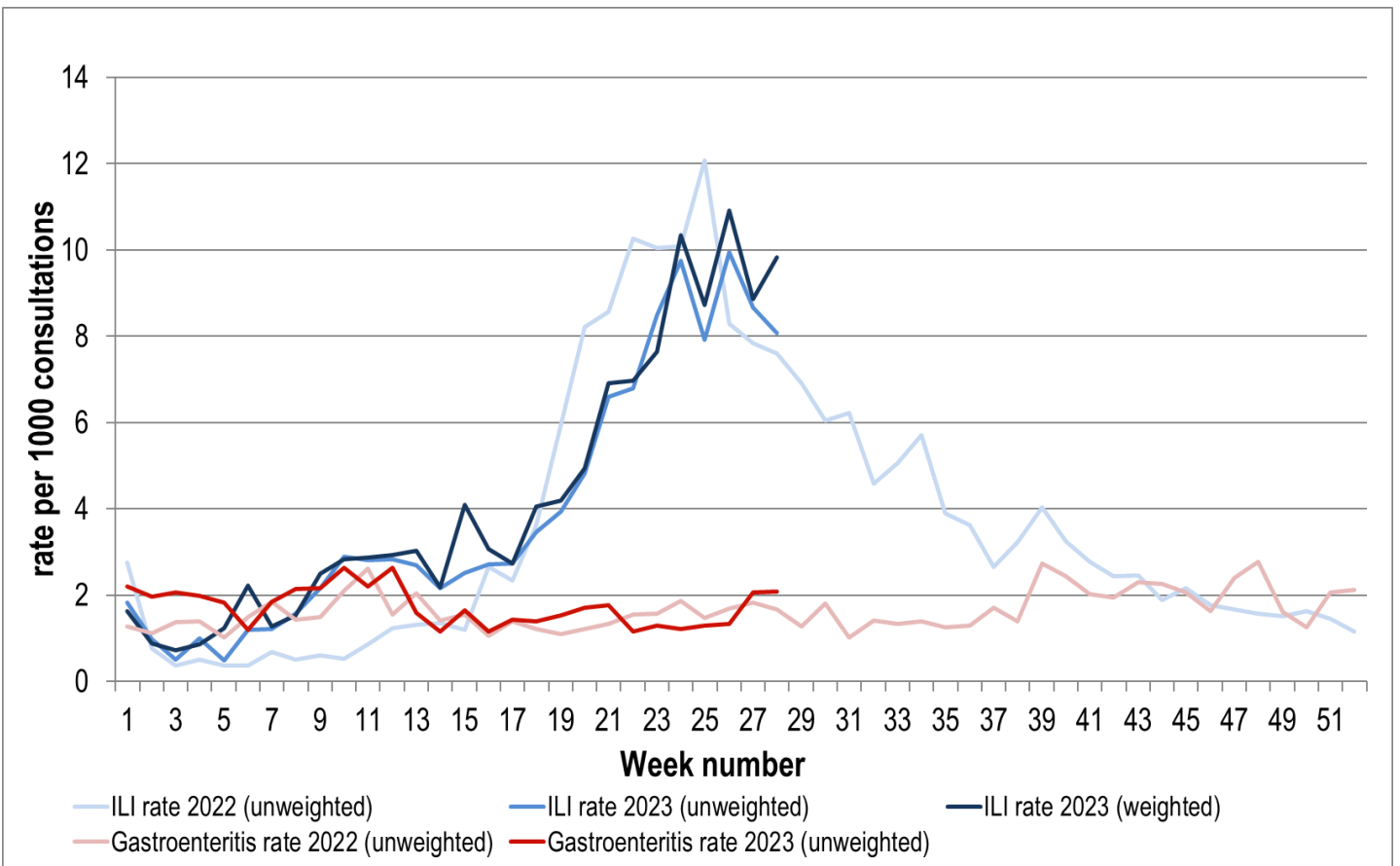


Figure 5. ASPREN ILI and gastroenteritis rates 2022-23. Weighted rates are weighted to account for population size differences between jurisdictions, using population estimates from the 2011 Australian Census.

VIROLOGICAL SURVEILLANCE

43% of all ILI patients were swab tested during weeks 27 and 28 (see Figure 6).

20 cases of Influenza A, 18 cases of Influenza B and 4 cases of SARS-CoV-2 were detected during this period. There were 25 cases of Rhinovirus detected making it the most common respiratory virus circulating the nation at present (see figure 8).

Viral laboratory data is provided by SA Pathology laboratory.

	Reporting Period 3 July - 16 July 2023	YTD 1 Jan - 16 July 2023
Total number of ILI notifications	299	1787
Number of swab tests performed	128	727
% ILI patients tested	43%	41%
% of swab tests positive for influenza	30%	24%

Figure 6. ASPREN virological surveillance results overview for 2023 #

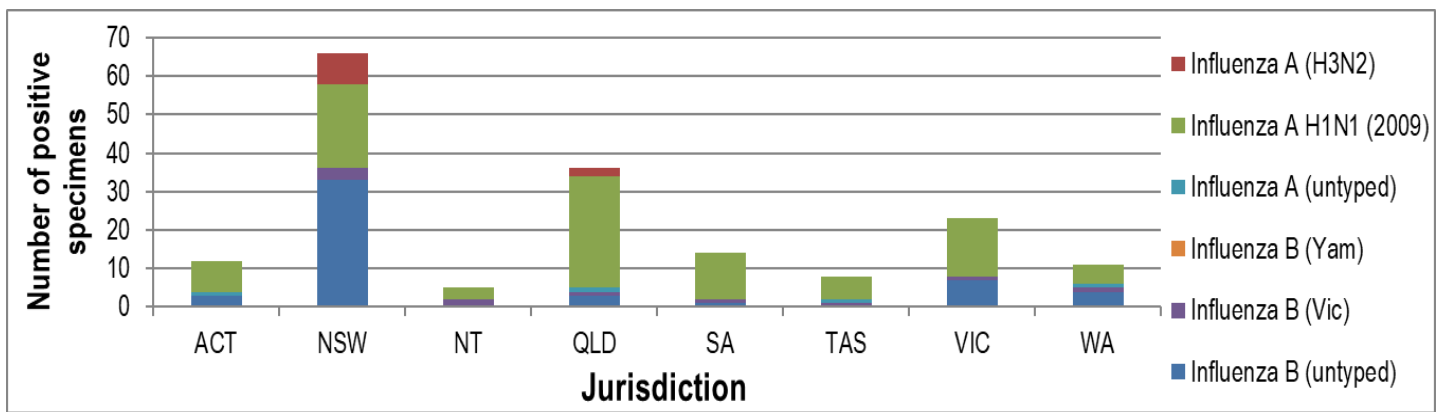


Figure 7. ASPREN influenza subtype analysis by jurisdiction for 2023 #

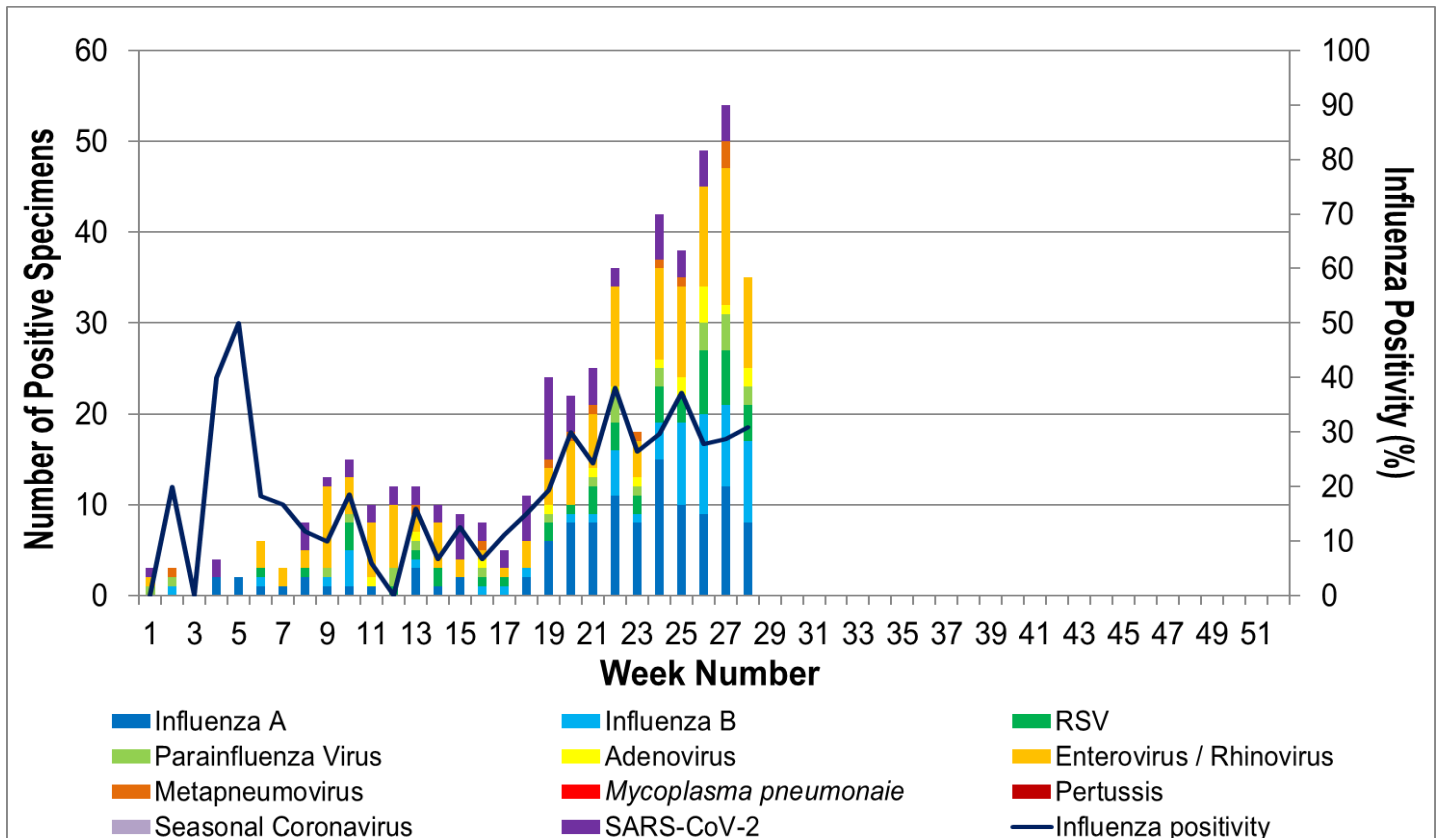


Figure 8. ASPREN, laboratory detection of influenza and other respiratory viruses for 2023 #

The Australian Sentinel Practices Research Network is supported by the Australian Government Department of Health (the Department). The opinions expressed in this paper are those of the authors, and do not necessarily represent the views of the Department.

Please note: This report is based on data available as at 20 July 2023. Delays in the reporting of data may cause data to change retrospectively.