

**NATIONAL PRIMARY CARE INFECTIOUS DISEASES  
SENTINEL SURVEILLANCE FORTNIGHTLY REPORT**

From The Australian Sentinel Practices Research Network (ASPREN) \*

No. 02, 2025 - 13th January — 26th January 2025

**NATIONAL SUMMARY**



Influenza-like-illness levels are decreasing

**6**

Cases of influenza have been detected in this reporting period  
3 x Influenza A  
3 x Influenza B

**16%**

Influenza positivity during the reporting period.

**6**

Cases of influenza have been detected this year:  
3 x Influenza A  
3 x Influenza B



Gastroenteritis levels are decreasing

**SYNDROMIC SURVEILLANCE  
REPORTING**

Reports were received from 334 reporters from 8 states and territories during the reporting period. During weeks 3 and 4 reporters saw a total of 39,340 patients.

**INFLUENZA-LIKE-ILLNESS (ILI)**

Nationally, ILI notifications decreased during the period with 98 notifications being reported in weeks 3—4. ILI rates reported in this period were 2 cases per 1000 consultations (weighted). This was lower than the previous fortnight where rates were 7 and 4 cases per 1000 consultations in weeks 1 and 2 respectively. For the same reporting period in 2024, ILI rates were higher at 3 cases per 1000 consultations for weeks 3 and 4 (see Fig. 5).

**GASTROENTERITIS**

Nationally, gastroenteritis notifications decreased to 63 notifications reported. Gastroenteritis rates reported in this period decreased to 1 case per 1000 consultations in weeks 3 and 4, compared to 3 and 1 cases per 1000 consultations in weeks 1 and 2 respectively (see Fig. 5).

\* ASPREN is funded by the Commonwealth's Department of Health, Office of Health Protection, Vaccine Preventable Disease Surveillance Section.

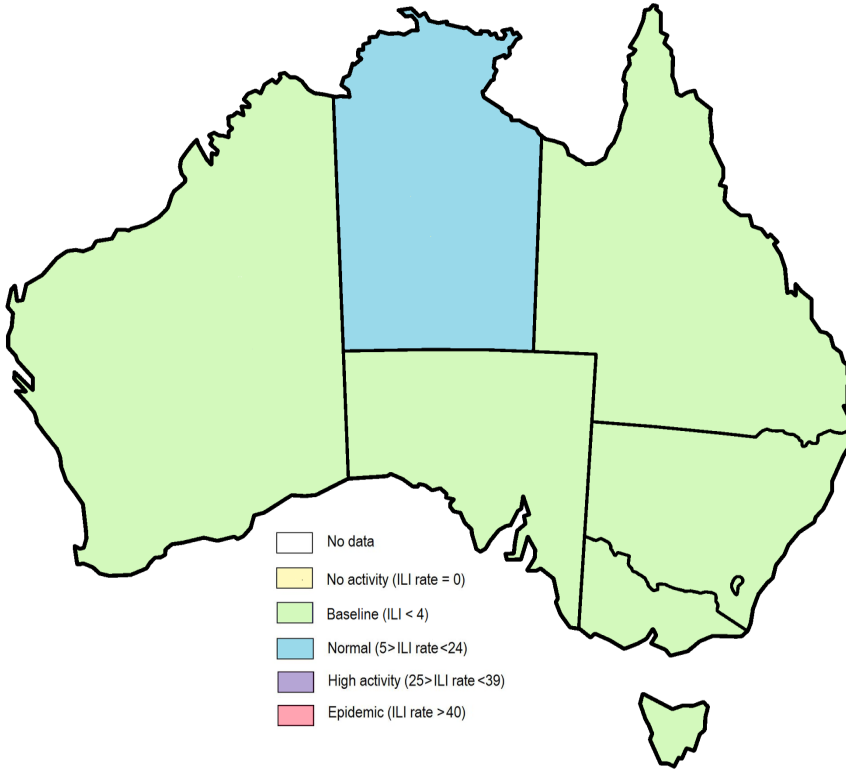


Figure 1. Map of ILI activity by jurisdiction, weeks 03 - 04, 2025.

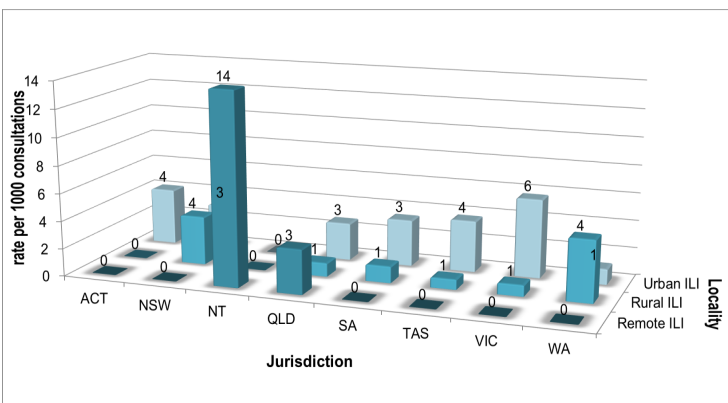


Figure 2. ASPREN rate of ILI by locality and jurisdiction, weeks 03 - 04, 2025.

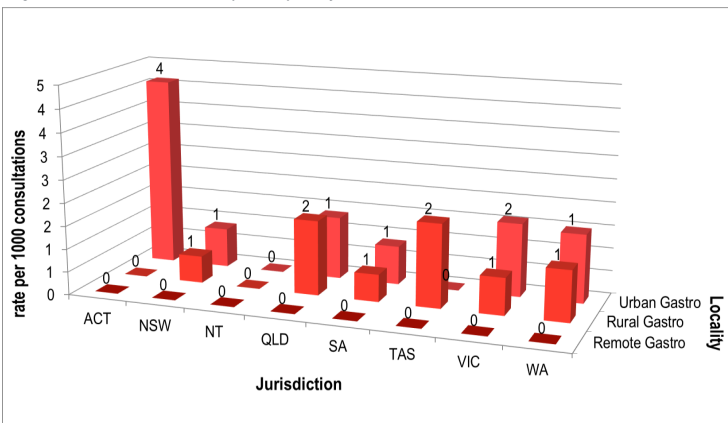


Figure 3. ASPREN rate of gastroenteritis by locality and jurisdiction, weeks 03 - 04, 2025.

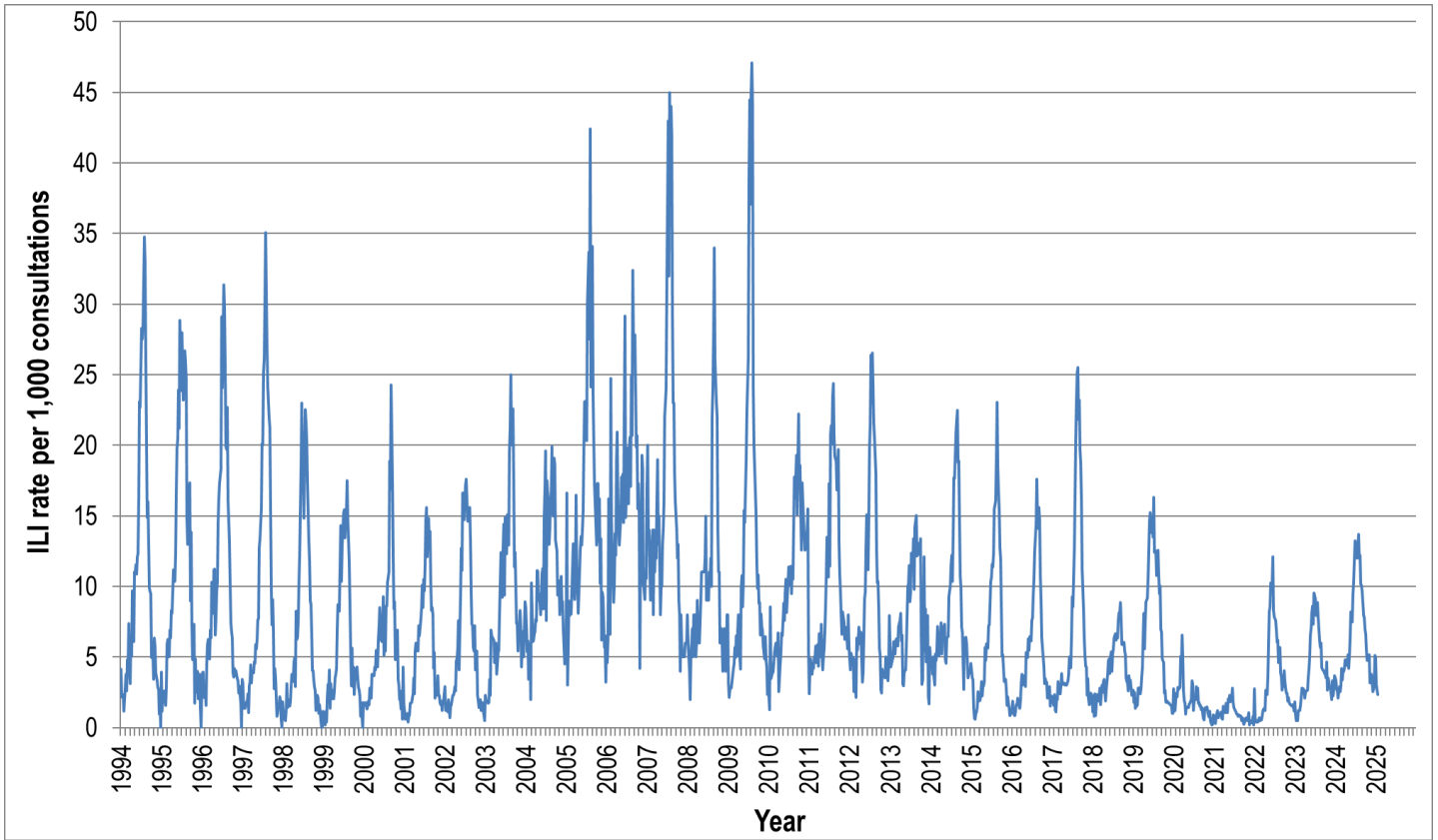


Figure 4. ASPREN ILI rates 1994 - 2025.

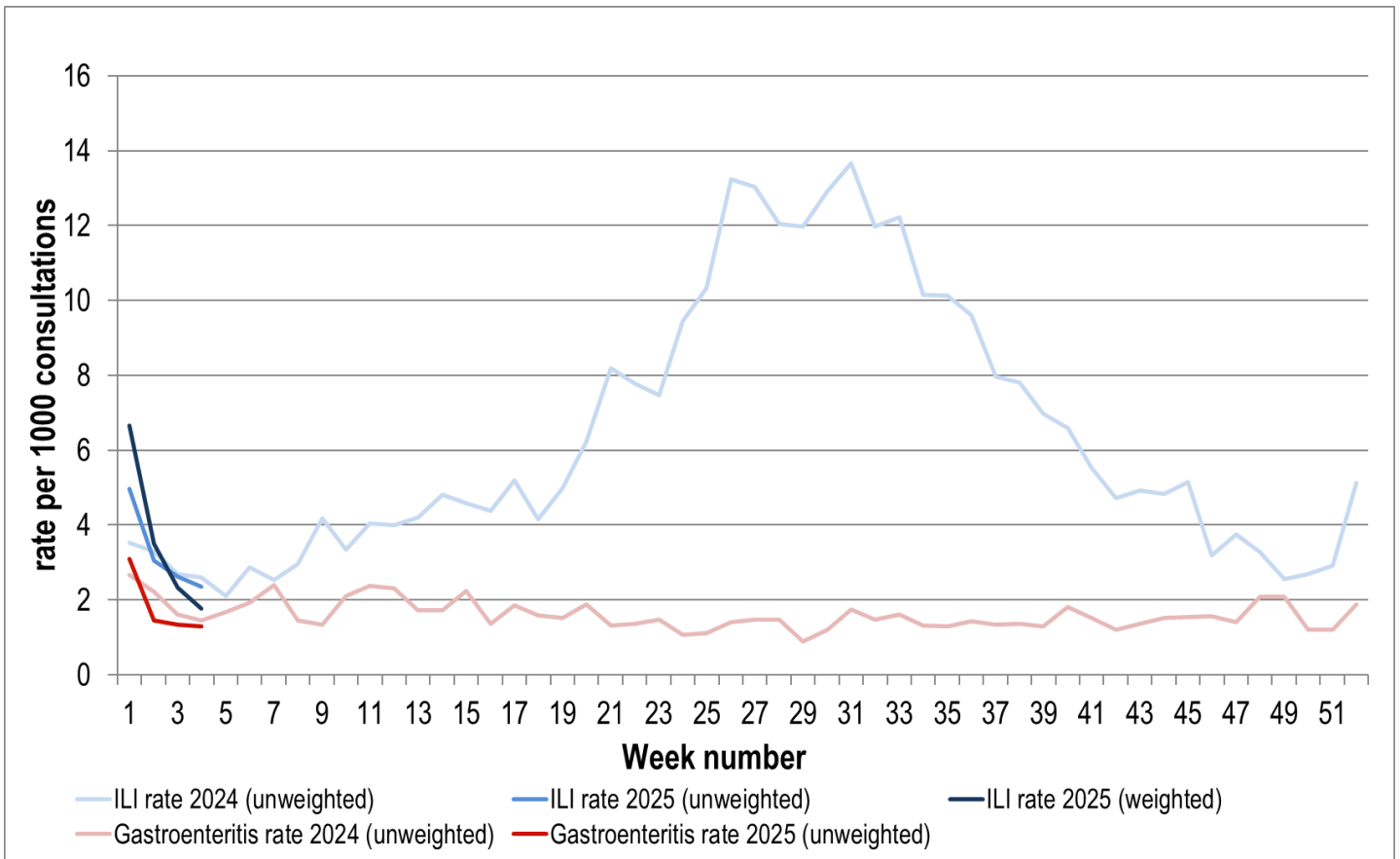


Figure 5. ASPREN ILI and gastroenteritis rates 2024-25. Weighted rates are weighted to account for population size differences between jurisdictions, using population estimates from the 2011 Australian Census.

### VIROLOGICAL SURVEILLANCE

41% of all ILI patients were swab tested during weeks 3 and 4 (see Figure 6).

3 cases of Influenza A, 2 cases of Influenza B and 4 cases of SARS-CoV-2 were detected during this period. There were 5 cases of Rhinovirus detected making it the most common respiratory virus circulating the nation at present (see figure 8).

# Viral laboratory data is provided by SA Pathology laboratory.

	Reporting Period	YTD
	13 Jan - 26 Jan 2025	1 Jan - 26 Jan 2025
Total number of ILI notifications	98	238
Number of swab tests performed	40	77
% ILI patients tested	41%	32%
% of swab tests positive for influenza	13%	14%

Figure 6. ASPREN virological surveillance results overview for 2025 #

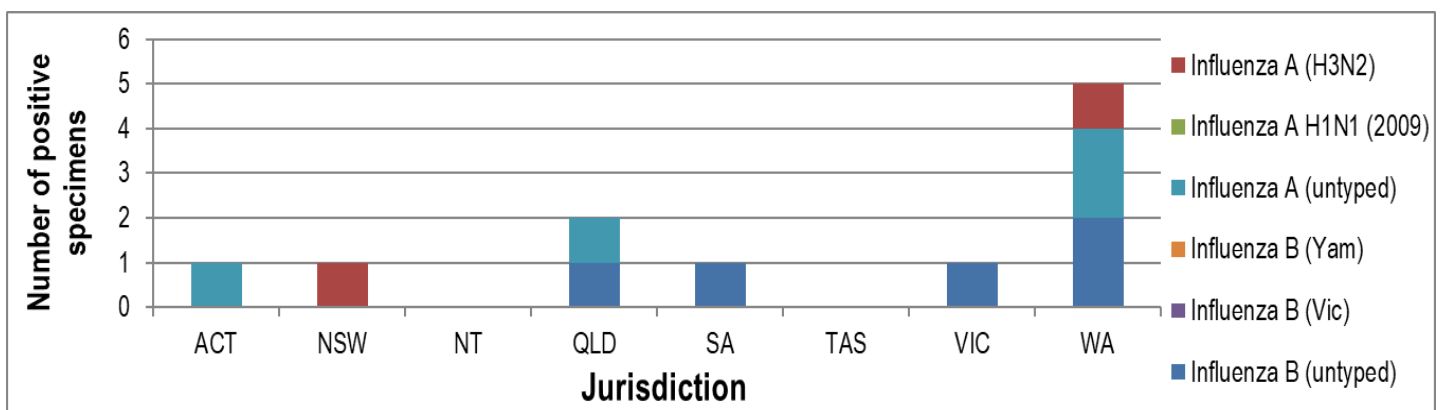


Figure 7. ASPREN influenza subtype analysis by jurisdiction for 2025 #

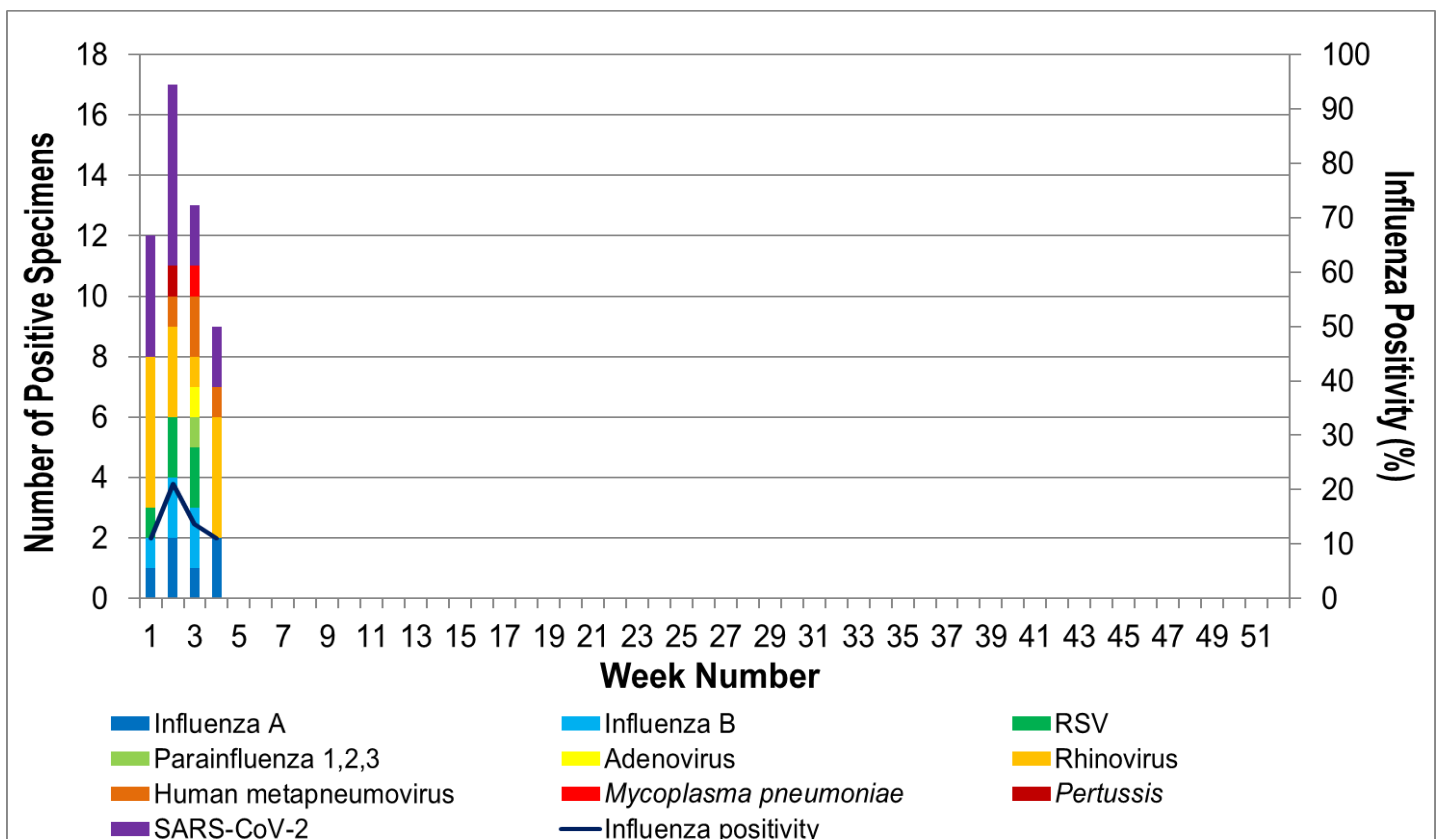


Figure 8. ASPREN, laboratory detection of influenza and other respiratory viruses for 2025 #