

**NATIONAL PRIMARY CARE INFECTIOUS DISEASES
SENTINEL SURVEILLANCE FORTNIGHTLY REPORT**

From The Australian Sentinel Practices Research Network (ASPREN) *

No. 01, 2025 - 1st January — 12th January 2025

NATIONAL SUMMARY



Influenza-like-illness levels are increasing

6

Case of influenza have been detected in this reporting period
3 x Influenza A
3 x Influenza B

16%

Influenza positivity during the reporting period.

6

Cases of influenza have been detected this year:
3 x Influenza A
3 x Influenza B



Gastroenteritis levels are increasing

**SYNDROMIC SURVEILLANCE
REPORTING**

Reports were received from 334 reporters from 8 states and territories during the reporting period. During weeks 1 and 2 reporters saw a total of 37,231 patients.

INFLUENZA-LIKE-ILLNESS (ILI)

Nationally, ILI notifications increased during the period with 140 notifications being reported in weeks 1—2. ILI rates reported in this period were 7 and 4 cases per 1000 consultations (weighted). This was higher than the previous fortnight where rates were 3 and 5 cases per 1000 consultations in weeks 51 and 52 respectively. For the same reporting period in 2024, ILI rates were lower at 5 and 4 cases per 1000 consultations for weeks 1 and 2 respectively (see Fig. 5).

GASTROENTERITIS

Nationally, gastroenteritis notifications increased to 77 notifications reported. Gastroenteritis rates reported in this period increased to 3 and 1 cases per 1000 consultations in weeks 1 and 2 respectively, compared to 1 and 2 cases per 1000 consultations in weeks 51 and 52 respectively (see Fig. 5).

* ASPREN is funded by the Commonwealth's Department of Health, Office of Health Protection, Vaccine Preventable Disease Surveillance Section.

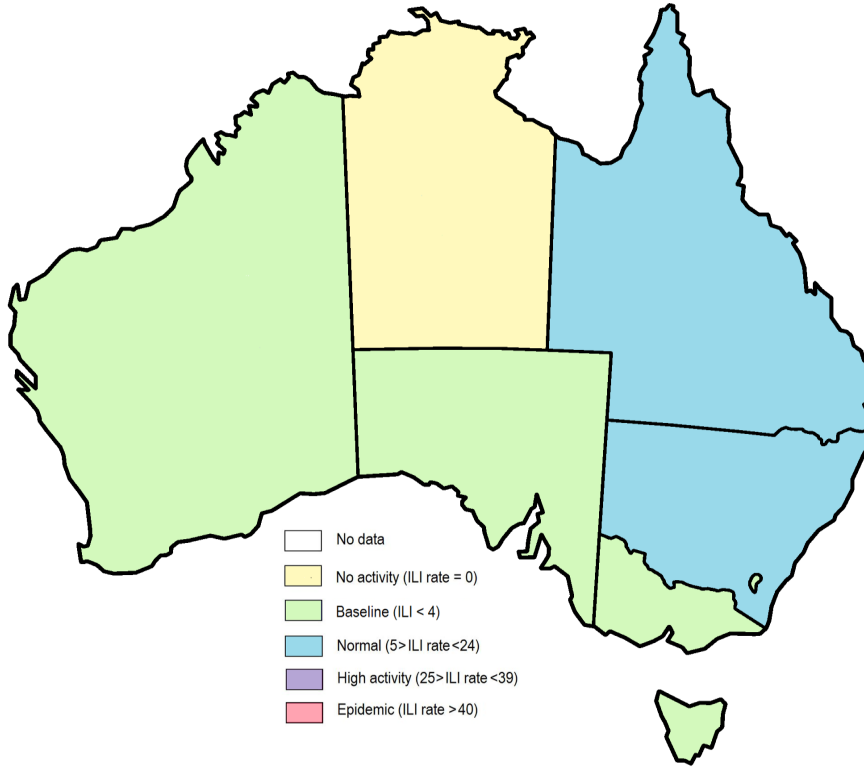


Figure 1. Map of ILI activity by jurisdiction, weeks 01 - 02, 2025.

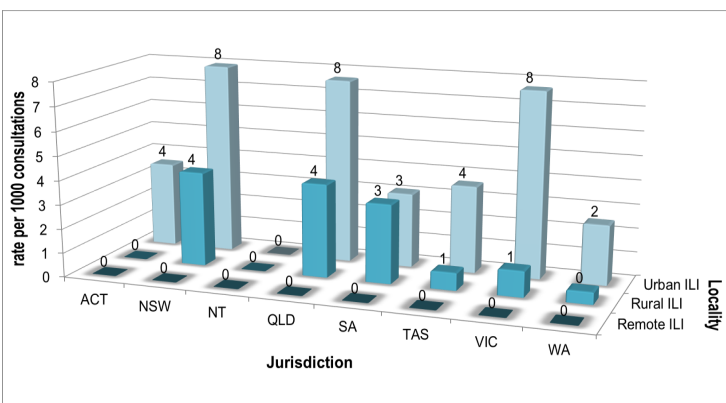


Figure 2. ASPREN rate of ILI by locality and jurisdiction, weeks 01 - 02, 2025.

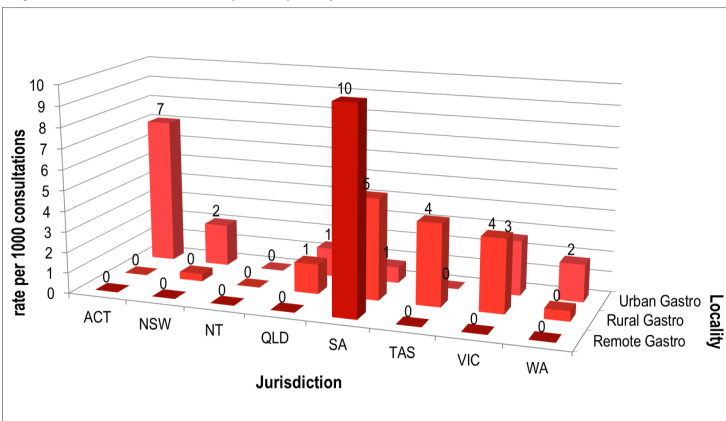


Figure 3. ASPREN rate of gastroenteritis by locality and jurisdiction, weeks 01 - 02, 2025.

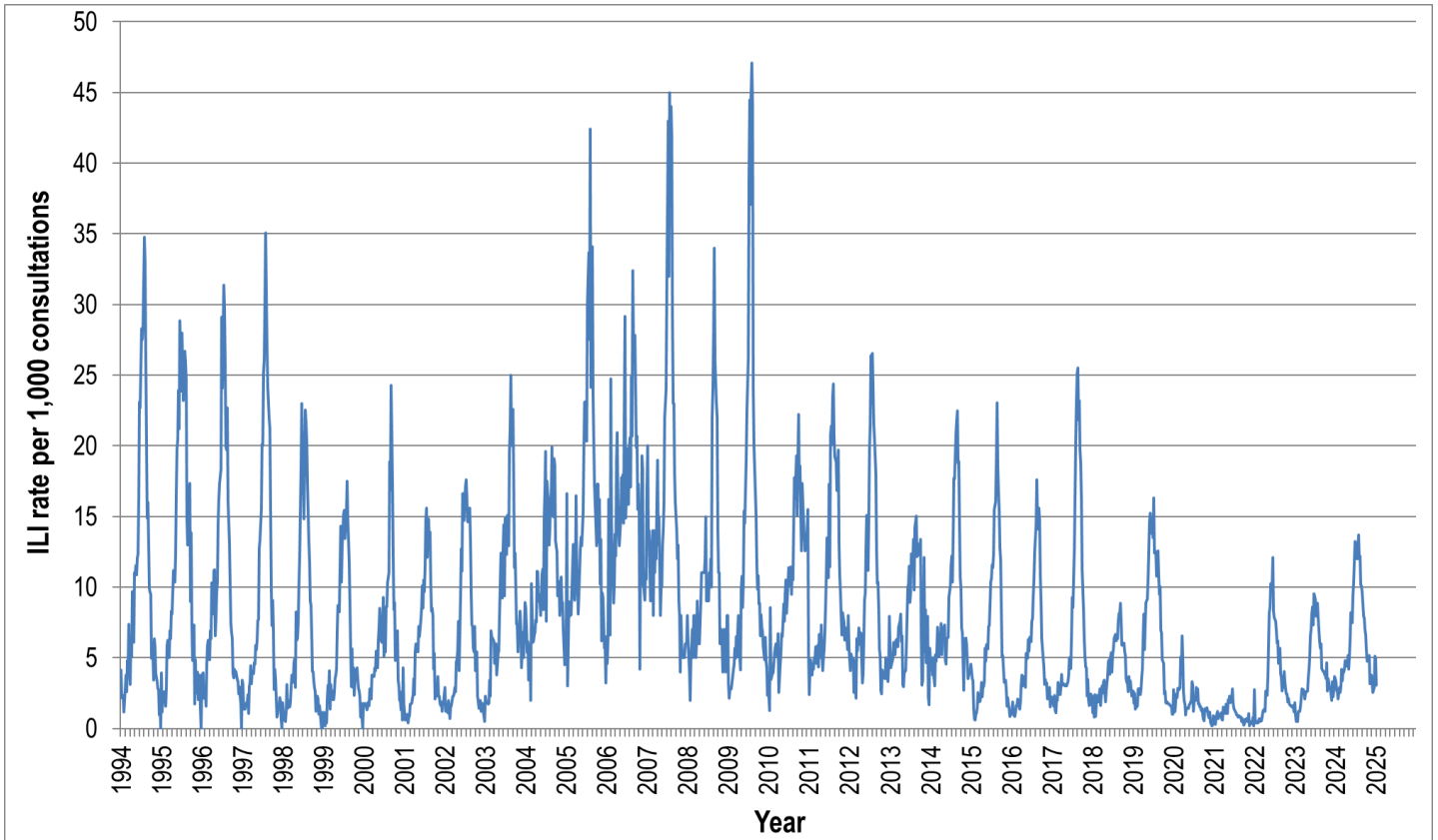


Figure 4. ASPREN ILI rates 1994 - 2025.

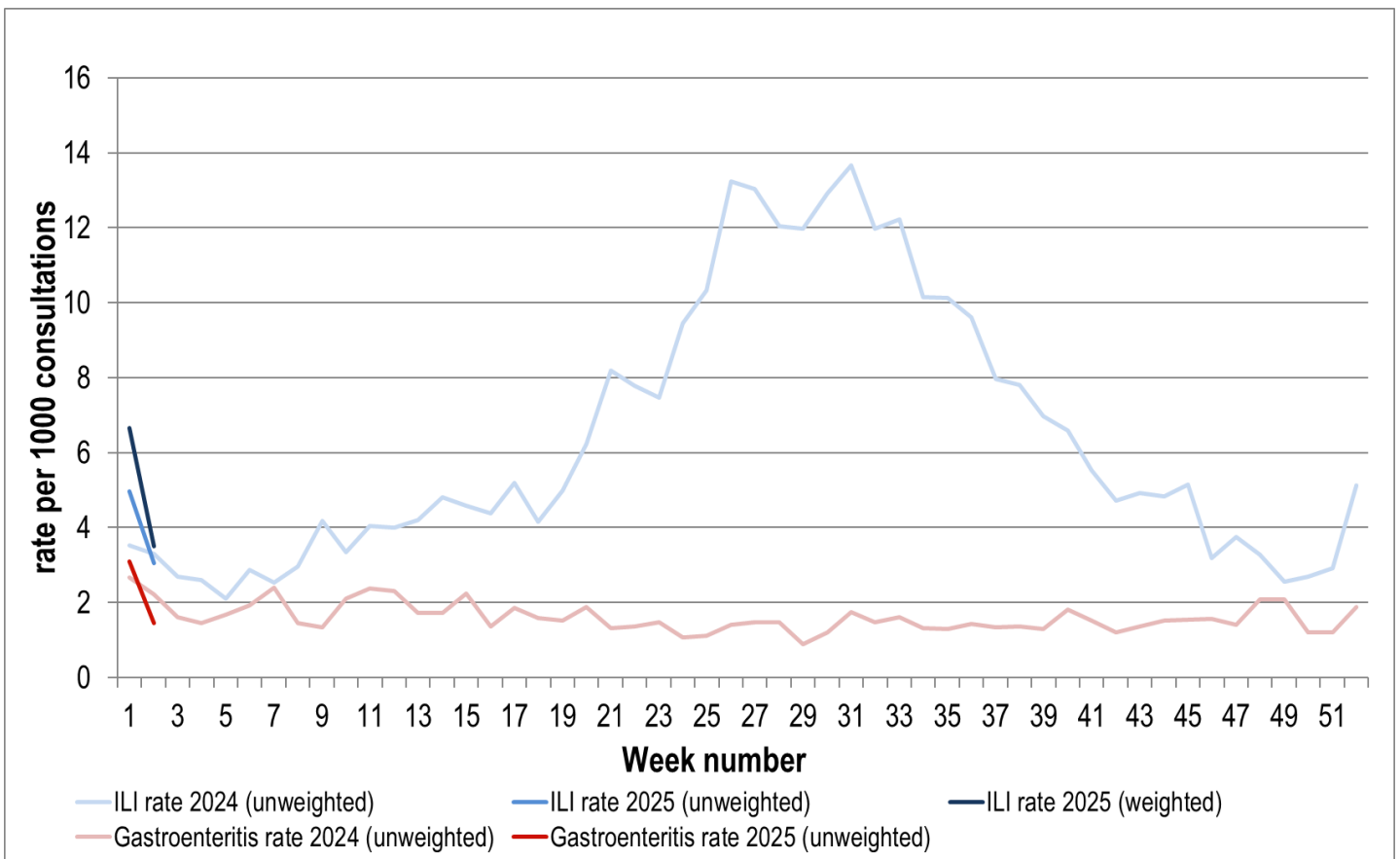


Figure 5. ASPREN ILI and gastroenteritis rates 2024-25. Weighted rates are weighted to account for population size differences between jurisdictions, using population estimates from the 2011 Australian Census.

VIROLOGICAL SURVEILLANCE

33% of all ILI patients were swab tested during weeks 1 and 2 (see Figure 6).

3 cases of Influenza A, 3 cases of Influenza B and 10 cases of SARS-CoV-2 were detected during this period. There were 8 cases of Rhinovirus detected making it the most common respiratory virus circulating the nation at present (see figure 8).

Viral laboratory data is provided by SA Pathology laboratory.

	Reporting Period 1 Jan - 12 Jan 2025	YTD 1 Jan - 12 Jan 2025
Total number of ILI notifications	111	140
Number of swab tests performed	37	37
% ILI patients tested	33%	26%
% of swab tests positive for influenza	16%	16%

Figure 6. ASPREN virological surveillance results overview for 2025 #

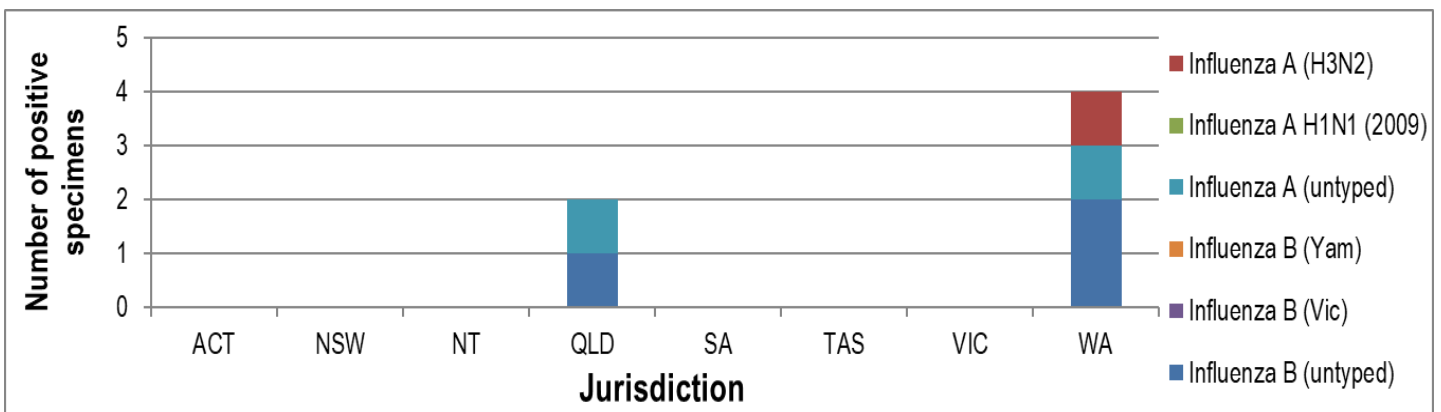


Figure 7. ASPREN influenza subtype analysis by jurisdiction for 2025 #

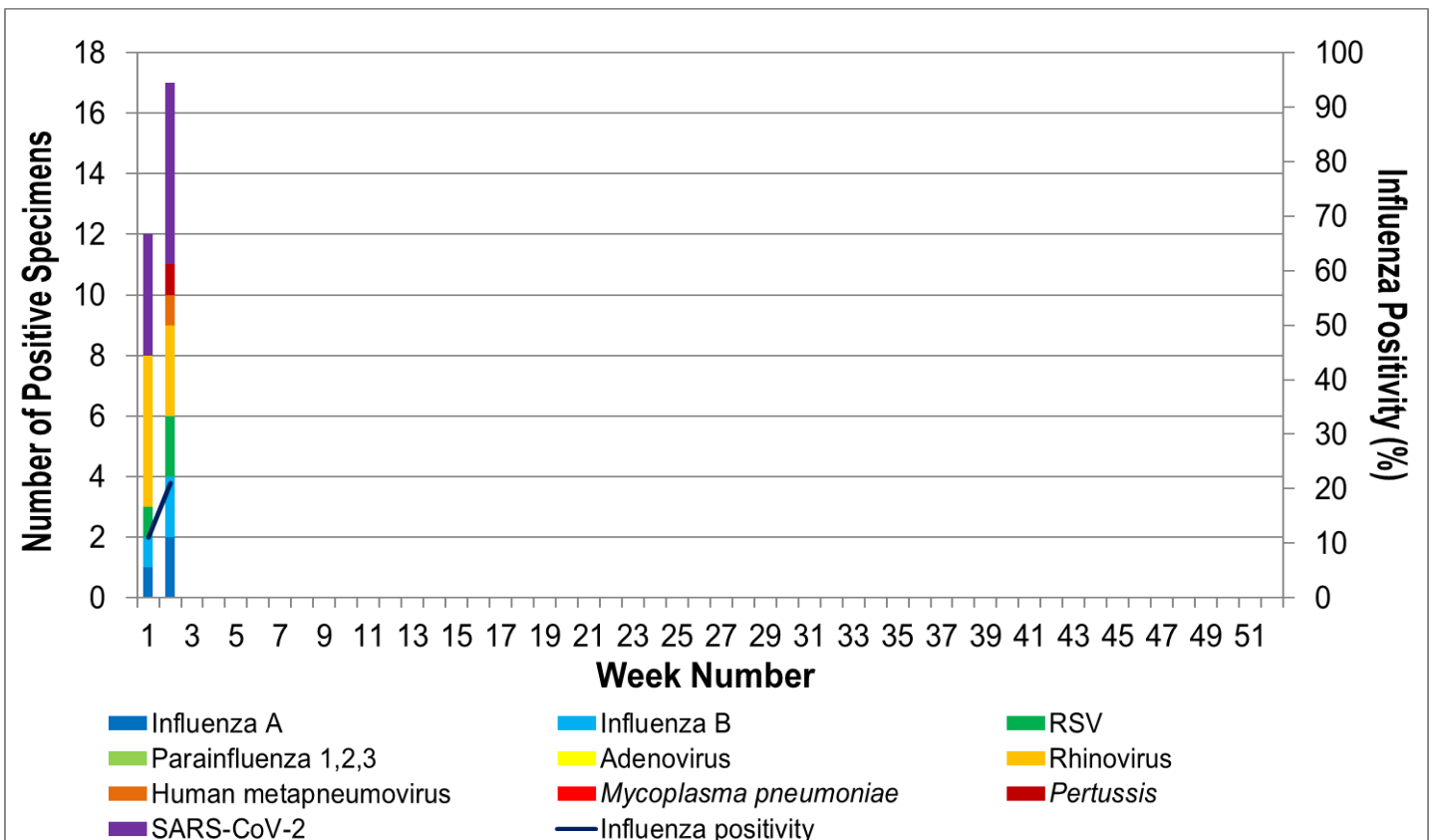


Figure 8. ASPREN, laboratory detection of influenza and other respiratory viruses for 2025 #