

**NATIONAL PRIMARY CARE INFECTIOUS DISEASES
SENTINEL SURVEILLANCE FORTNIGHTLY REPORT**

From The Australian Sentinel Practices Research Network (ASPREN) *

No. 13, 2023 - 19th June — 2nd July 2023

NATIONAL SUMMARY



Influenza-like-illness levels are increasing

38

Cases of influenza have been detected in this reporting period
18 x Influenza A
20 x Influenza B

32%

Influenza positivity during the reporting period.

135

Cases of influenza have been detected this year:
93 x Influenza A
42 x Influenza B



Gastroenteritis levels remain steady below baseline levels

**SYNDROMIC SURVEILLANCE
REPORTING**

Reports were received from 202 reporters from 8 states and territories during the reporting period. During weeks 25 and 26 reporters saw a total of 31,972 patients.

INFLUENZA-LIKE-ILLNESS (ILI)

Nationally, ILI notifications increased during the period with 285 notifications being reported in weeks 25–26. ILI rates reported in this period were 9 and 11 cases per 1000 consultations (weighted). This was slightly higher than the previous fortnight where rates were 8 and 10 cases per 1000 consultations in weeks 23 and 24 respectively. For the same reporting period in 2022, ILI rates were higher at 14 and 9 cases per 1000 consultations for weeks 25 and 26 respectively (see Fig. 5).

GASTROENTERITIS

Nationally, gastroenteritis notifications slightly increased to 42 notifications reported. Gastroenteritis rates reported in this period remained steady at 1 case per 1000 consultations in weeks 25 and 26, compared to 1 case per 1000 consultations in weeks 23 and 24 (see Fig. 5).

* ASPREN is funded by the Commonwealth's Department of Health, Office of Health Protection, Vaccine Preventable Disease Surveillance Section.



Figure 1. Map of ILI activity by jurisdiction, weeks 25 - 26, 2023.

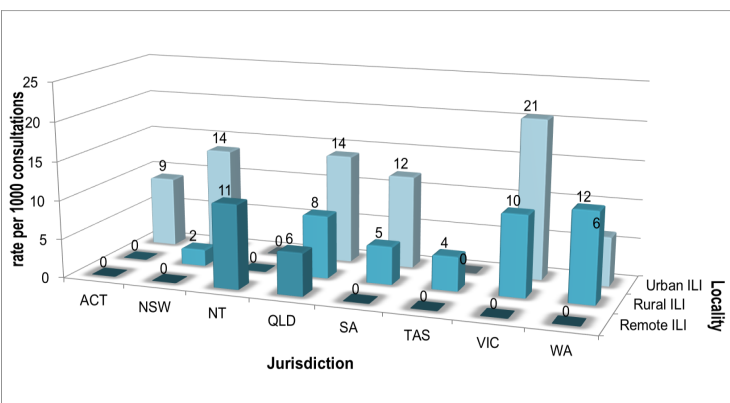


Figure 2. ASPREN rate of ILI by locality and jurisdiction, weeks 25 - 26, 2023.

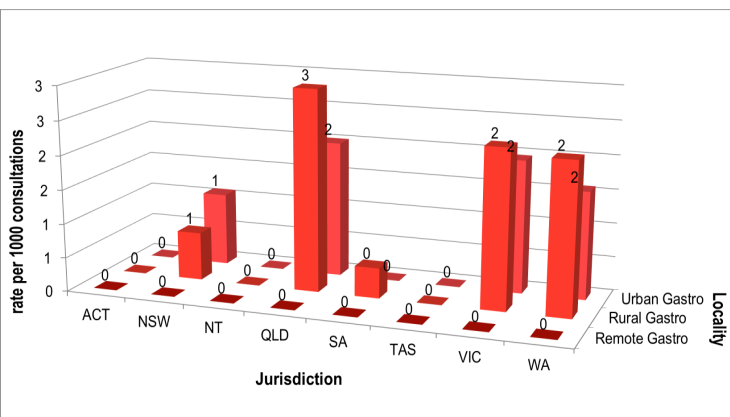


Figure 3. ASPREN rate of gastroenteritis by locality and jurisdiction, weeks 25 - 26, 2023.

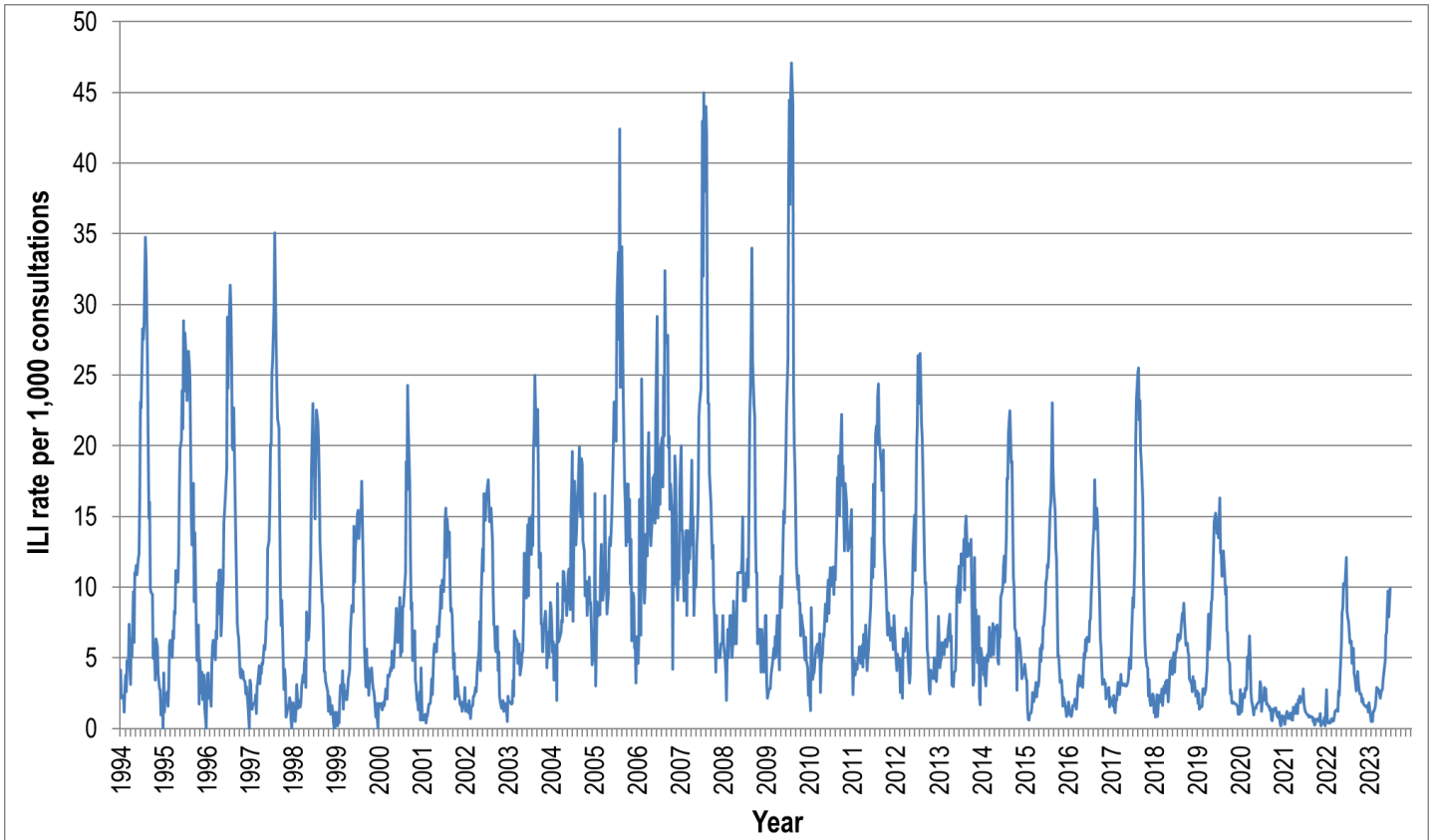


Figure 4. ASPREN ILI rates 1994 - 2023.

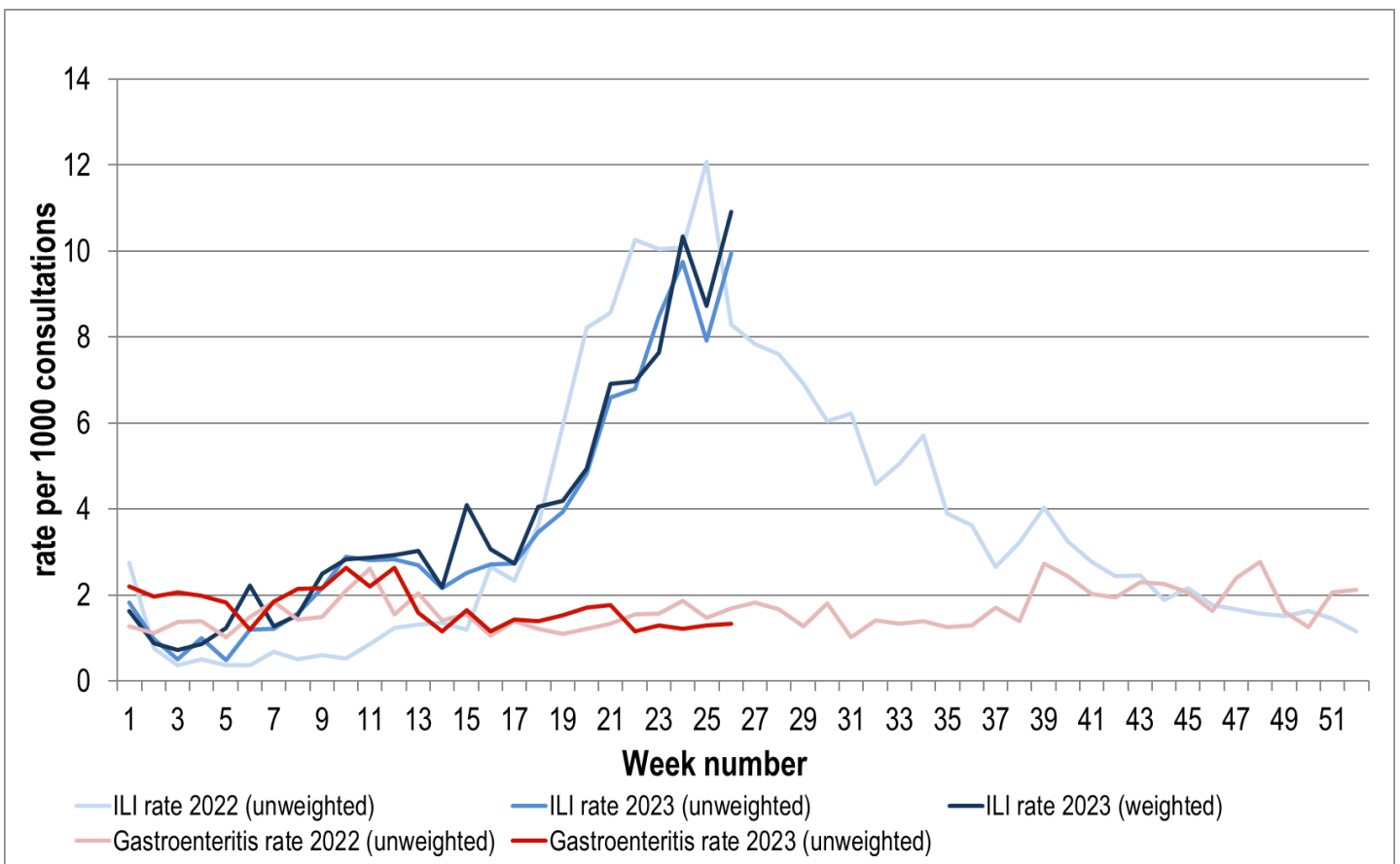


Figure 5. ASPREN ILI and gastroenteritis rates 2022-23. Weighted rates are weighted to account for population size differences between jurisdictions, using population estimates from the 2011 Australian Census.

VIROLOGICAL SURVEILLANCE

42% of all ILI patients were swab tested during weeks 25 and 26 (see Figure 6).

18 cases of Influenza A, 20 cases of Influenza B and 7 cases of SARS-CoV-2 were detected during this period. There were 20 cases of Rhinovirus detected making it the equal most common respiratory virus circulating the nation at present (see figure 8).

Viral laboratory data is provided by SA Pathology laboratory.

	Reporting Period 19 June - 2 July 2023	YTD 1 Jan - 2 July 2023
Total number of ILI notifications	285	1488
Number of swab tests performed	119	593
% ILI patients tested	42%	40%
% of swab tests positive for influenza	32%	23%

Figure 6. ASPREN virological surveillance results overview for 2023 #

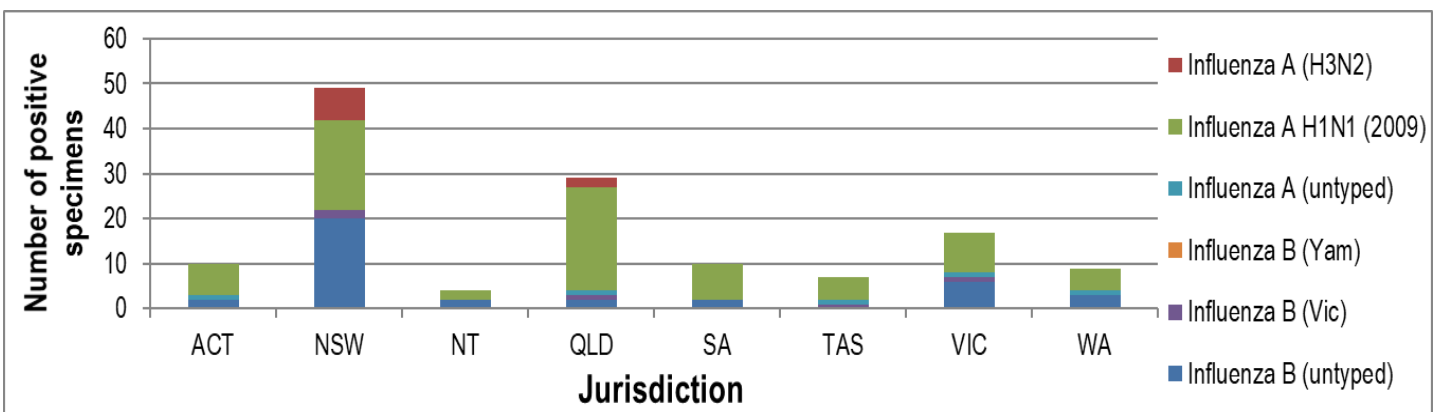


Figure 7. ASPREN influenza subtype analysis by jurisdiction for 2023 #

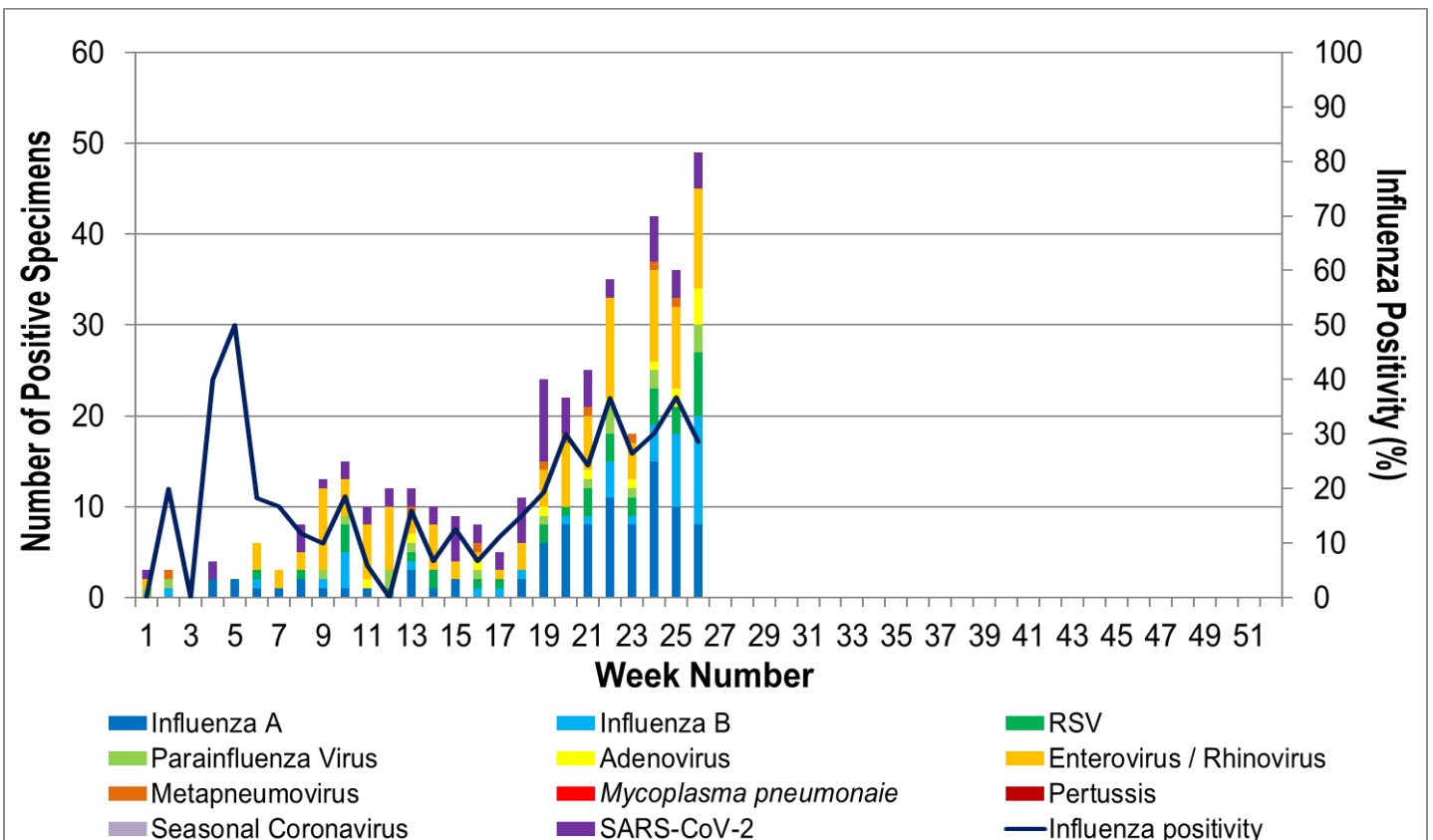


Figure 8. ASPREN, laboratory detection of influenza and other respiratory viruses for 2023 #

The Australian Sentinel Practices Research Network is supported by the Australian Government Department of Health (the Department). The opinions expressed in this paper are those of the authors, and do not necessarily represent the views of the Department.

Please note: This report is based on data available as at 6 July 2023. Delays in the reporting of data may cause data to change retrospectively.