



**NATIONAL PRIMARY CARE INFECTIOUS DISEASES  
SENTINEL SURVEILLANCE FORTNIGHTLY REPORT**

From The Australian Sentinel Practices Research Network (ASPREN) \*

No. 25, 2024 - 2nd December — 15th December 2024

**NATIONAL SUMMARY**

-  Influenza-like-illness levels remain steady at baseline levels
- 1** Case of influenza have been detected in this reporting period  
1 x Influenza A  
0 x Influenza B
- 2%** Influenza positivity during the reporting period.
- 398** Cases of influenza have been detected this year:  
383 x Influenza A  
15 x Influenza B
-  Gastroenteritis levels remain steady below baseline levels

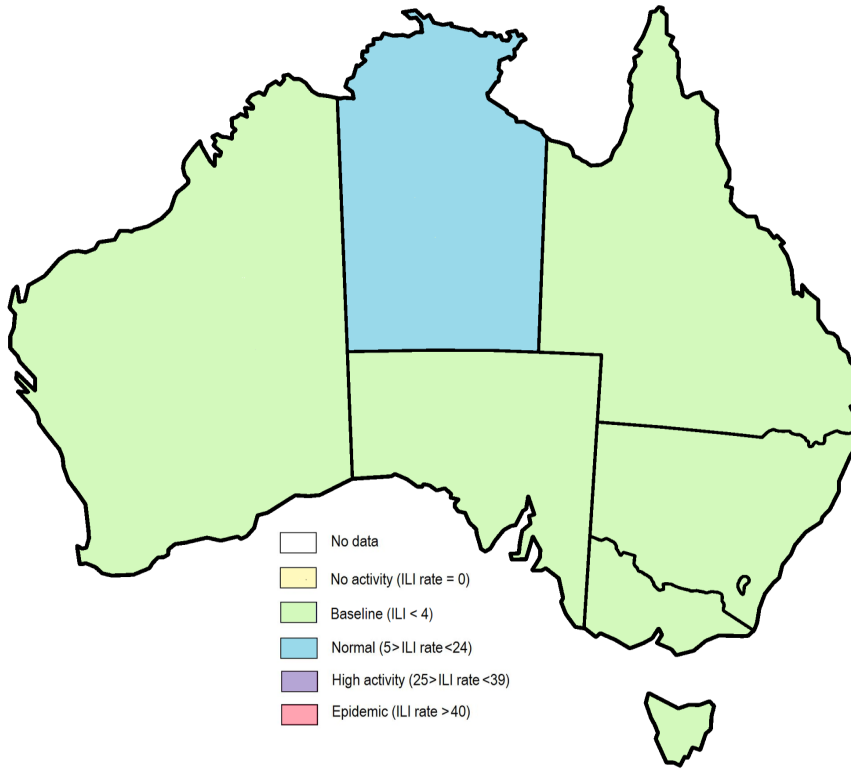


Figure 1. Map of ILI activity by jurisdiction, weeks 49 - 50, 2024.

**SYNDROMIC SURVEILLANCE  
REPORTING**

Reports were received from 333 reporters from 8 states and territories during the reporting period. During weeks 49 and 50 reporters saw a total of 49,898 patients.

**INFLUENZA-LIKE-ILLNESS (ILI)**

Nationally, ILI notifications decreased during the period with 131 notifications being reported in weeks 49—50. ILI rates reported in this period were 3 cases per 1000 consultations (weighted). This was slightly lower than the previous fortnight where rates were 4 cases per 1000 consultations in weeks 47 and 48 respectively. For the same reporting period in 2023, ILI rates were lower at 4 and 2 cases per 1000 consultations for weeks 49 and 50 respectively (see Fig. 5).

**GASTROENTERITIS**

Nationally, gastroenteritis notifications slightly decreased to 82 notifications reported. Gastroenteritis rates reported in this period remained steady at 2 and 1 cases per 1000 consultations in weeks 49 and 50 respectively, compared to 1 and 2 cases per 1000 consultations in weeks 47 and 48 respectively (see Fig. 5).

\* ASPREN is funded by the Commonwealth's Department of Health, Office of Health Protection, Vaccine Preventable Disease Surveillance Section.

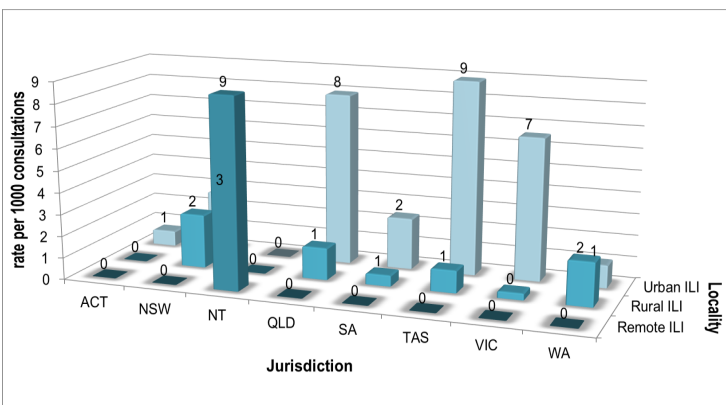


Figure 2. ASPREN rate of ILI by locality and jurisdiction, weeks 49 - 50, 2024.

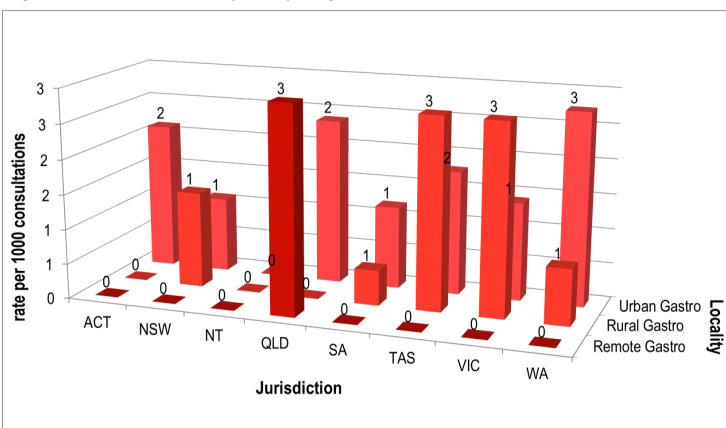


Figure 3. ASPREN rate of gastroenteritis by locality and jurisdiction, weeks 49 - 50, 2024.

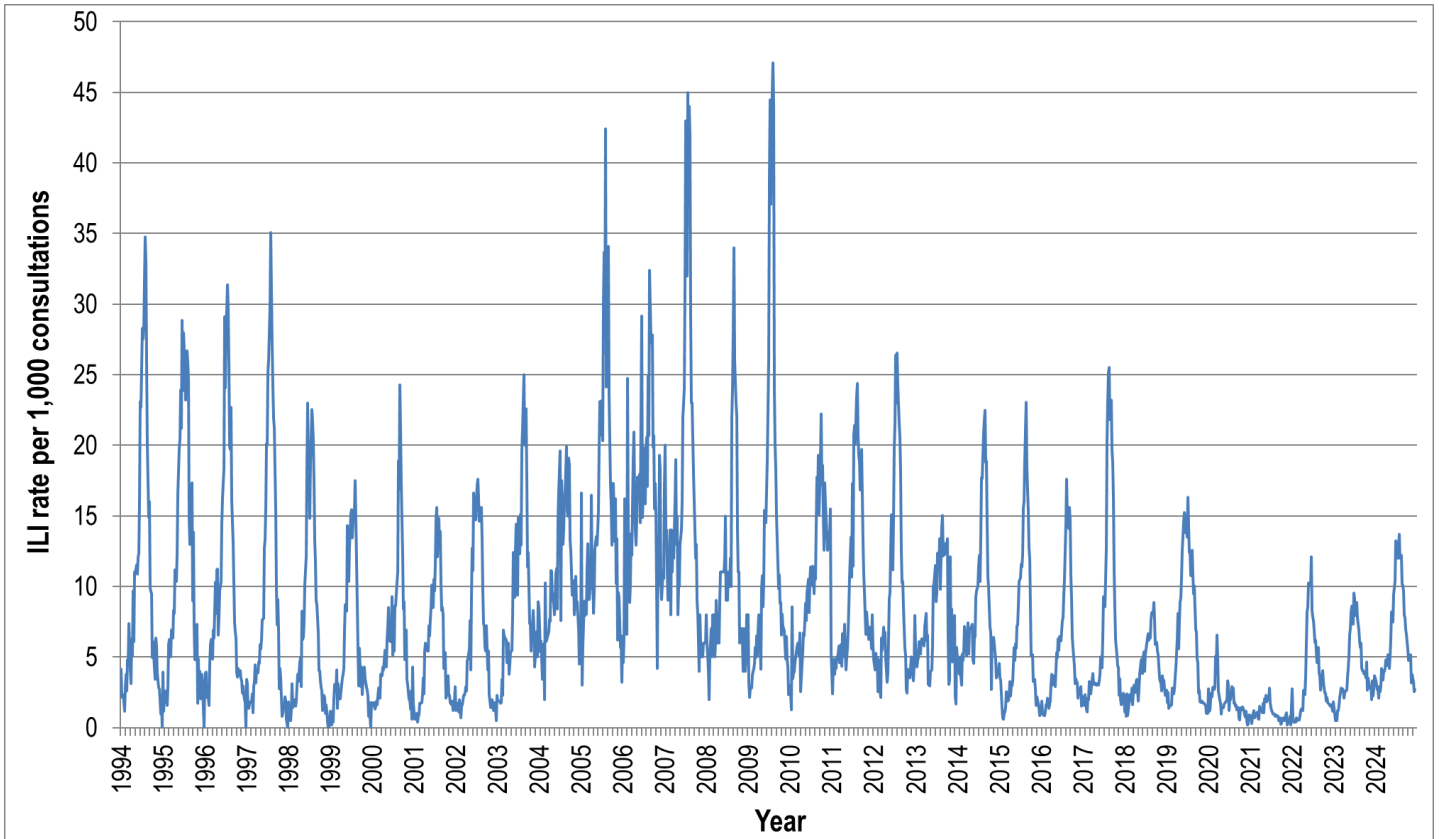


Figure 4. ASPREN ILI rates 1994 - 2024.

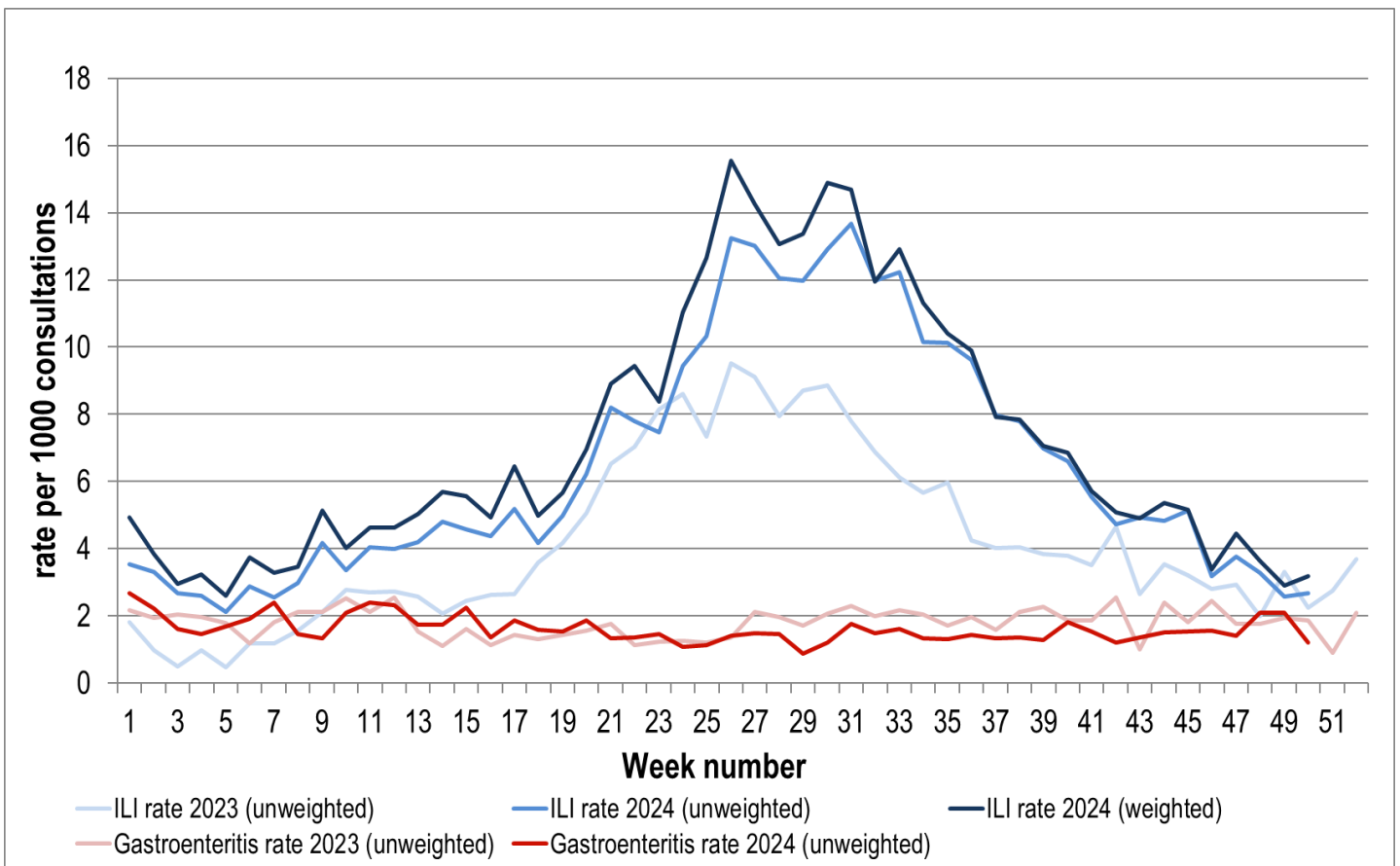


Figure 5. ASPREN ILI and gastroenteritis rates 2023-24. Weighted rates are weighted to account for population size differences between jurisdictions, using population estimates from the 2011 Australian Census.

**VIROLOGICAL SURVEILLANCE**

40% of all ILI patients were swab tested during weeks 49 and 50 (see Figure 6).

2 cases of Influenza A, and 5 cases of SARS-CoV-2 were detected during this period. There were 12 cases of Rhinovirus detected making it the most common respiratory virus circulating the nation at present (see figure 8).

# Viral laboratory data is provided by SA Pathology laboratory.

	Reporting Period	YTD
	2 Dec - 15 Dec 2024	1 Jan - 15 Dec 2024
Total number of ILI notifications	131	7550
Number of swab tests performed	52	2710
% ILI patients tested	40%	36%
% of swab tests positive for influenza	2%	15%

Figure 6. ASPREN virological surveillance results overview for 2024 #

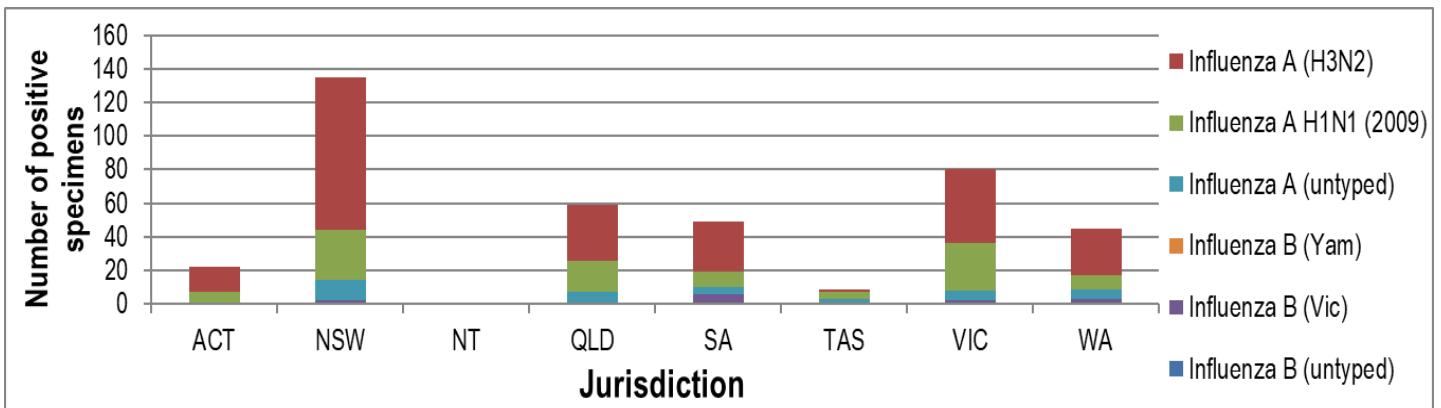


Figure 7. ASPREN influenza subtype analysis by jurisdiction for 2024 #

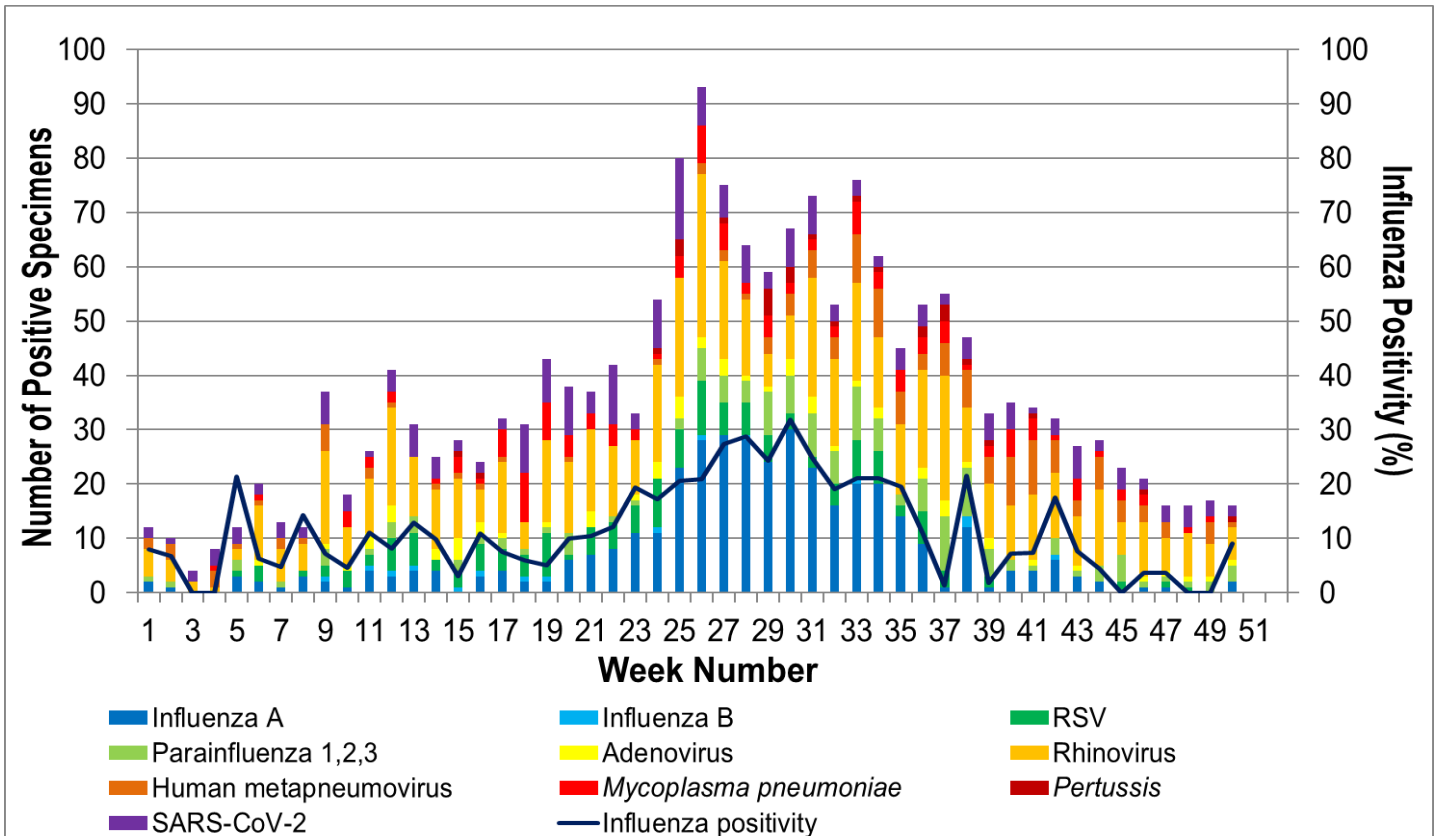


Figure 8. ASPREN, laboratory detection of influenza and other respiratory viruses for 2024 #

The Australian Sentinel Practices Research Network is supported by the Australian Government Department of Health (the Department). The opinions expressed in this paper are those of the authors, and do not necessarily represent the views of the Department.

Please note: This report is based on data available as at 18 December 2024. Delays in the reporting of data may cause data to change retrospectively.