

**NATIONAL PRIMARY CARE INFECTIOUS DISEASES  
SENTINEL SURVEILLANCE FORTNIGHTLY REPORT**

From The Australian Sentinel Practices Research Network (ASPREN) \*

No. 12, 2023 - 5th June — 18th June 2023

**NATIONAL SUMMARY**



Influenza-like-illness levels are increasing

**24**

Cases of influenza have been detected in this reporting period  
19 x Influenza A  
5 x Influenza B

**29%**

Influenza positivity during the reporting period.

**69**

Cases of influenza have been detected this year:  
52 x Influenza A  
17 x Influenza B



Gastroenteritis levels remain steady below baseline levels

**SYNDROMIC SURVEILLANCE  
REPORTING**

Reports were received from 205 reporters from 8 states and territories during the reporting period. During weeks 23 and 24 reporters saw a total of 30,439 patients.

**INFLUENZA-LIKE-ILLNESS (ILI)**

Nationally, ILI notifications significantly increased during the period with 276 notifications being reported in weeks 23–24. ILI rates reported in this period were 8 and 10 cases per 1000 consultations (weighted). This was higher than the previous fortnight where rates were 7 cases per 1000 consultations in weeks 21 and 22. For the same reporting period in 2022, ILI rates were higher at 11 cases per 1000 consultations for weeks 23 and 24 respectively (see Fig. 5).

**GASTROENTERITIS**

Nationally, gastroenteritis notifications decreased to 38 notifications reported. Gastroenteritis rates reported in this period slightly decreased to 1 case per 1000 consultations in weeks 23 and 24, compared to 2 and 1 cases per 1000 consultations in weeks 21 and 22 (see Fig. 5).

\* ASPREN is funded by the Commonwealth's Department of Health, Office of Health Protection, Vaccine Preventable Disease Surveillance Section.

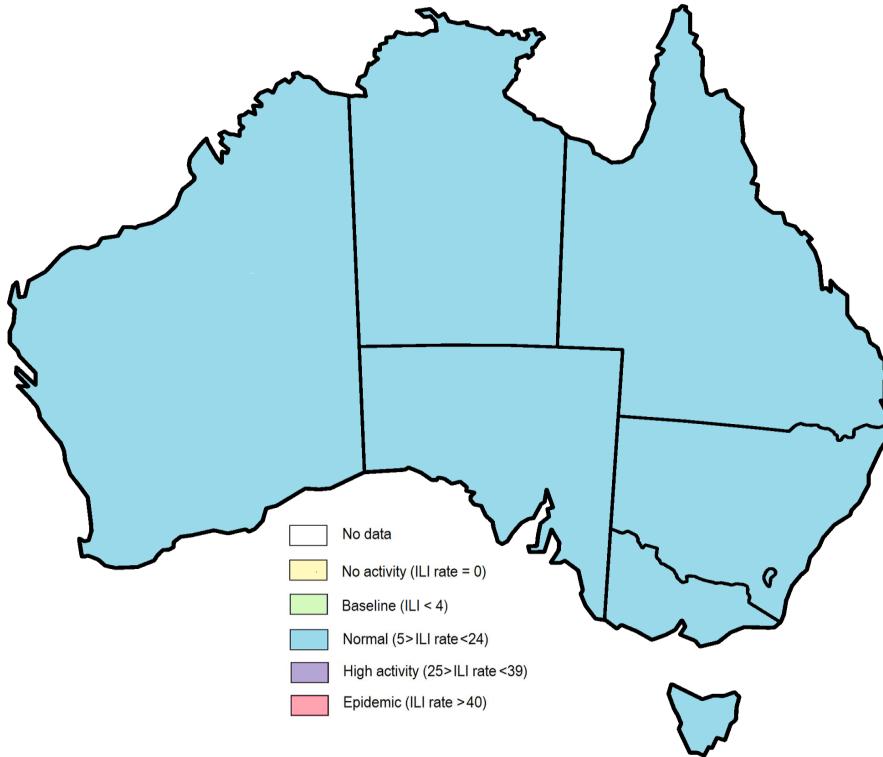


Figure 1. Map of ILI activity by jurisdiction, weeks 23 - 24, 2023.

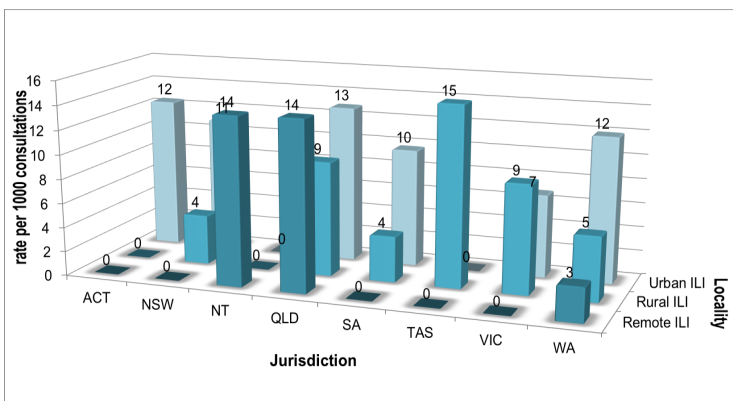


Figure 2. ASPREN rate of ILI by locality and jurisdiction, weeks 23 - 24, 2023.

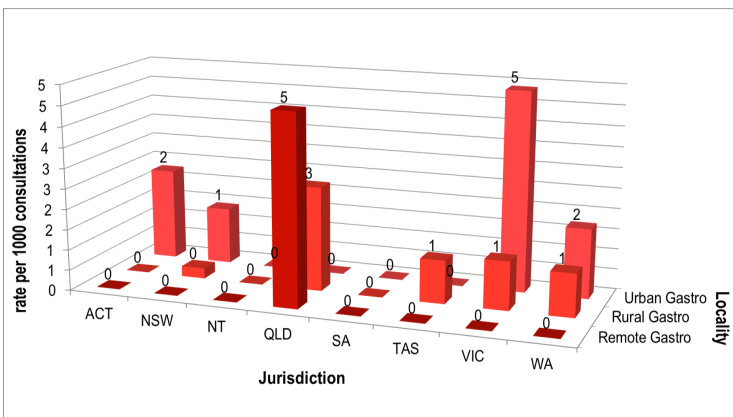


Figure 3. ASPREN rate of gastroenteritis by locality and jurisdiction, weeks 23 - 24, 2023.

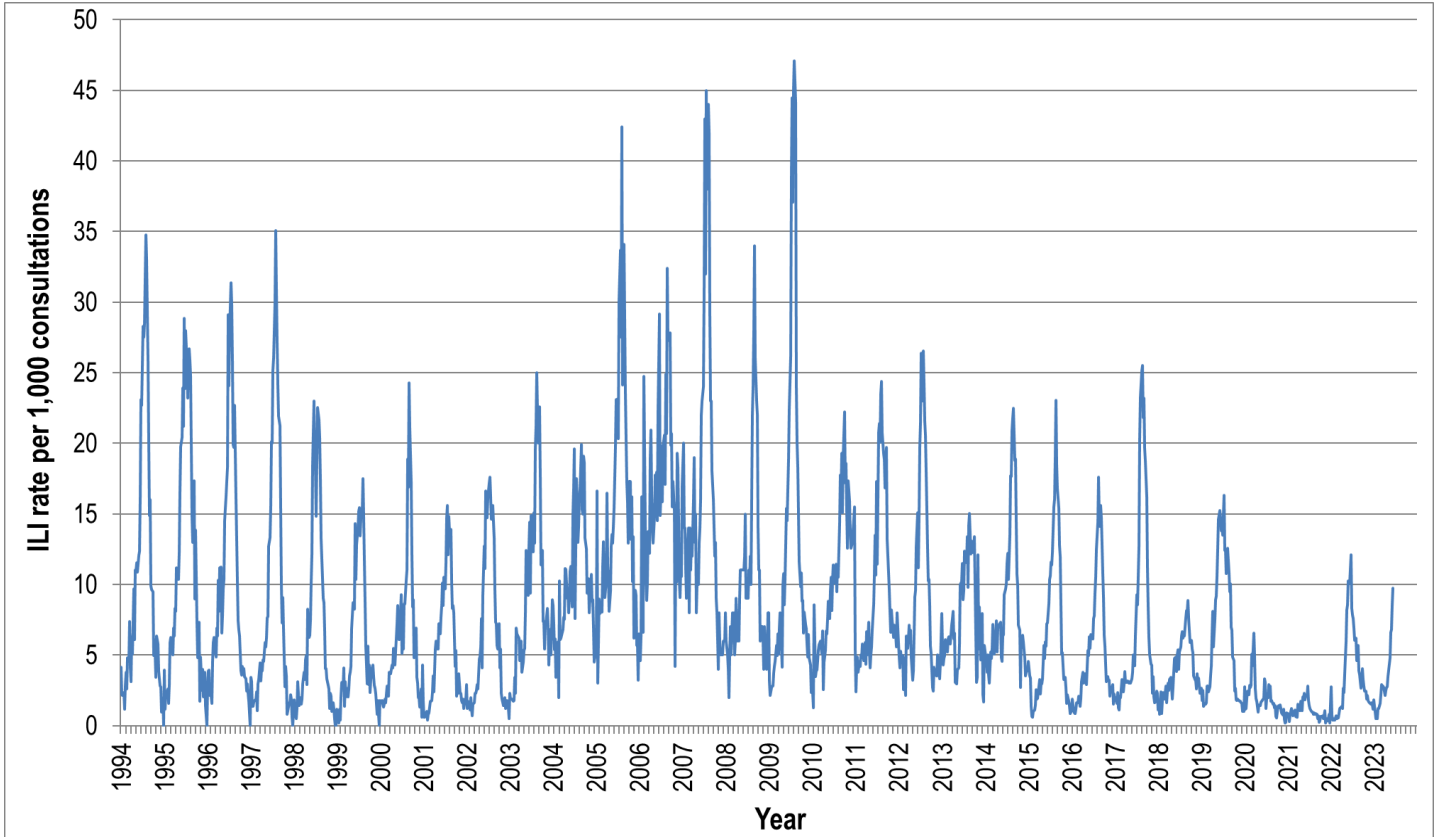


Figure 4. ASPREN ILI rates 1994 - 2023.

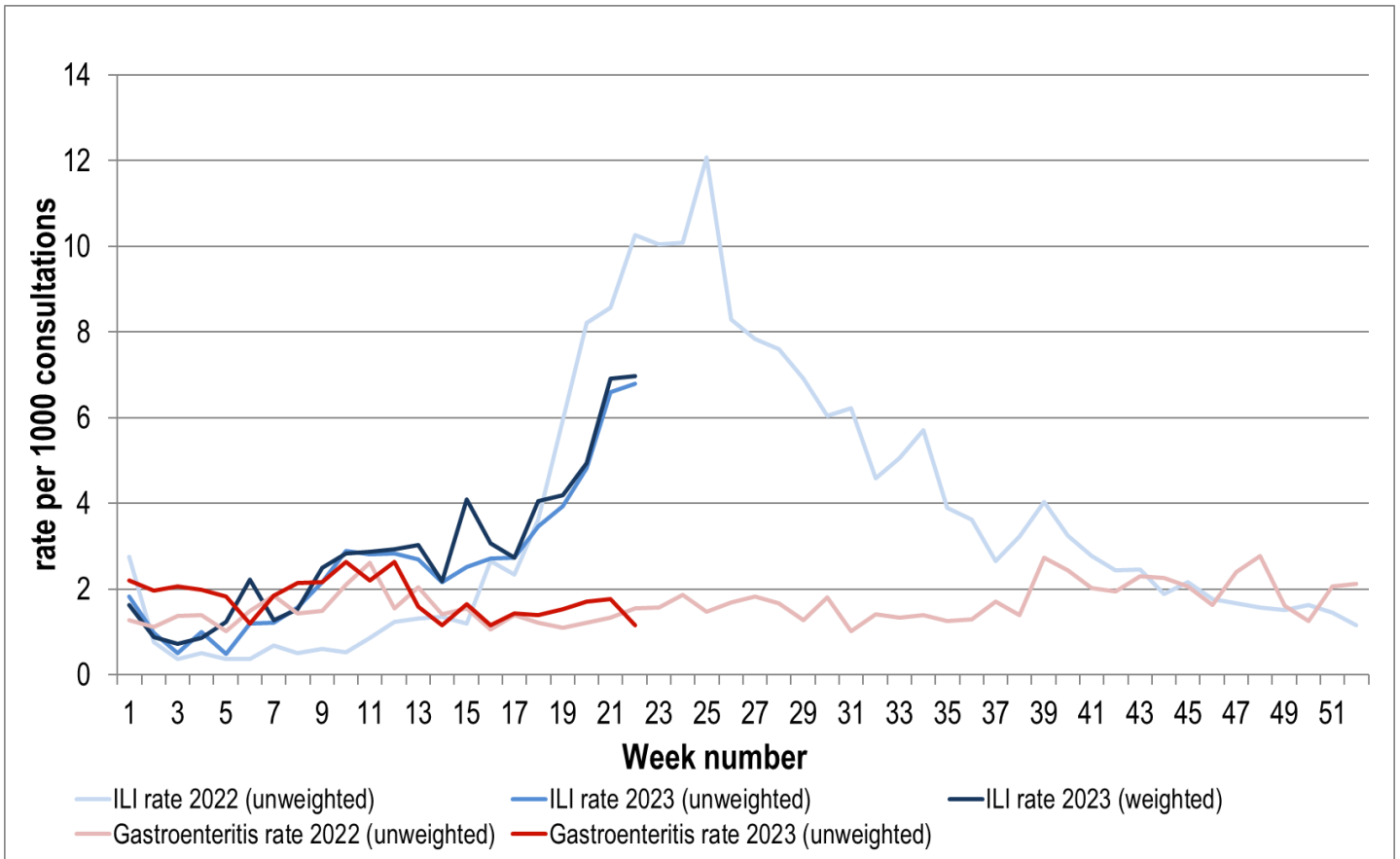


Figure 5. ASPREN ILI and gastroenteritis rates 2022-23. Weighted rates are weighted to account for population size differences between jurisdictions, using population estimates from the 2011 Australian Census.

**VIROLOGICAL SURVEILLANCE**

34% of all ILI patients were swab tested during weeks 23 and 24 (see Figure 6).

23 cases of Influenza A, 4 cases of Influenza B and 4 cases of SARS-CoV-2 were detected during this period. There were 13 cases of Rhinovirus detected making it the second most common respiratory virus circulating the nation at present (see figure 8).

# Viral laboratory data is provided by SA Pathology laboratory.

	Reporting Period 5 June - 18 June 2023	YTD 1 Jan - 18 June 2023
Total number of ILI notifications	276	1203
Number of swab tests performed	93	469
% ILI patients tested	34%	39%
% of swab tests positive for influenza	29%	20%

Figure 6. ASPREN virological surveillance results overview for 2023 #

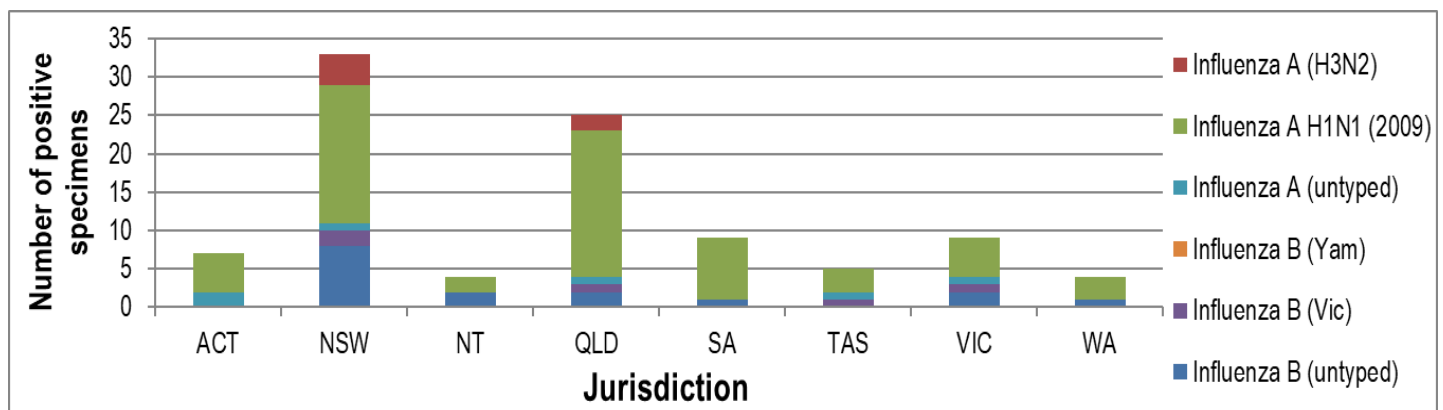


Figure 7. ASPREN influenza subtype analysis by jurisdiction for 2023 #

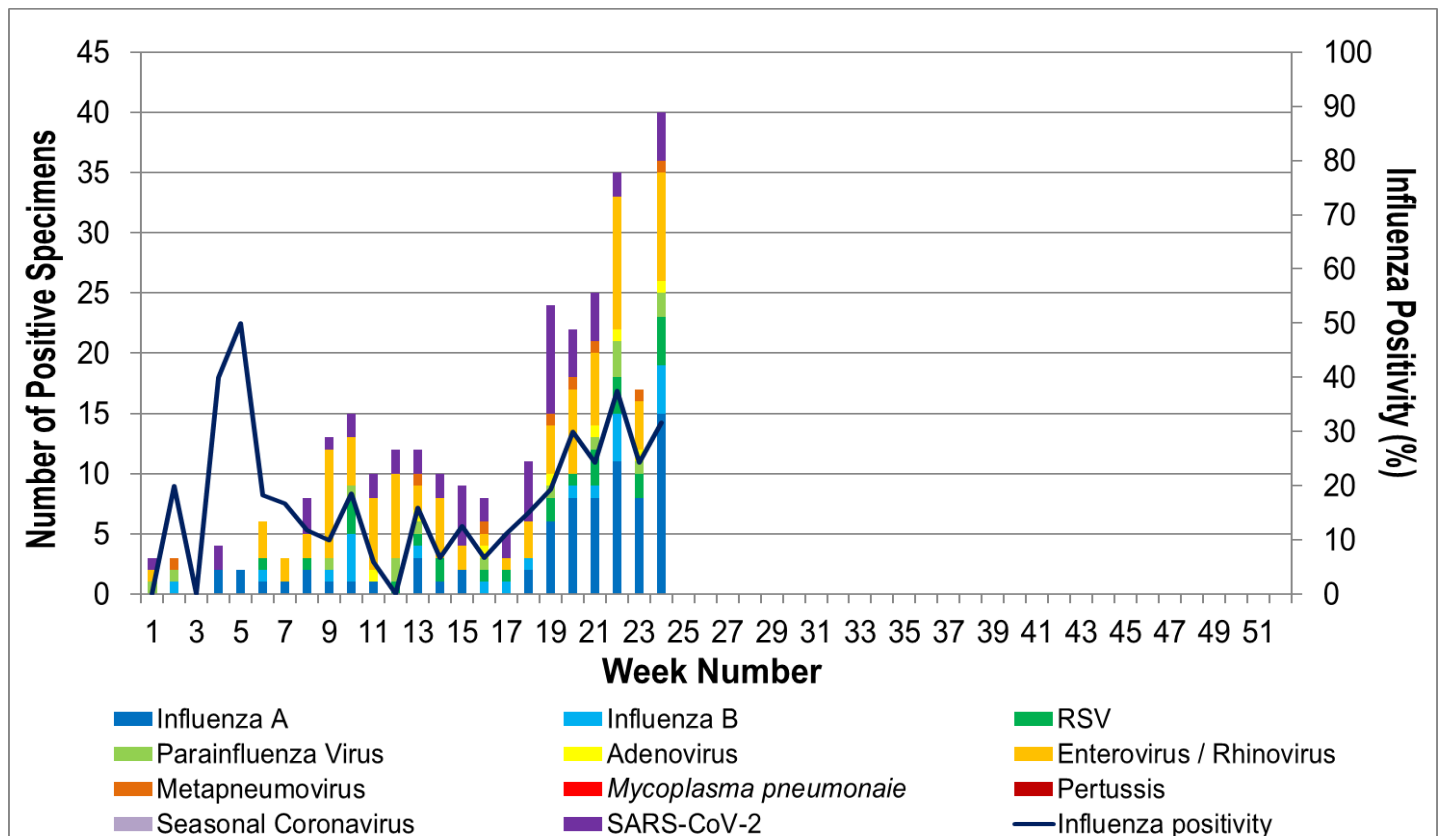


Figure 8. ASPREN, laboratory detection of influenza and other respiratory viruses for 2023 #

The Australian Sentinel Practices Research Network is supported by the Australian Government Department of Health (the Department). The opinions expressed in this paper are those of the authors, and do not necessarily represent the views of the Department.

Please note: This report is based on data available as at 22 June 2023. Delays in the reporting of data may cause data to change retrospectively.