

**NATIONAL PRIMARY CARE INFECTIOUS DISEASES  
SENTINEL SURVEILLANCE FORTNIGHTLY REPORT**

From The Australian Sentinel Practices Research Network (ASPREN) \*

No. 11, 2023 - 22nd May — 4th June 2023

**NATIONAL SUMMARY**



Influenza-like-illness levels are increasing

**24**

Cases of influenza have been detected in this reporting period  
19 x Influenza A  
5 x Influenza B

**32%**

Influenza positivity during the reporting period.

**69**

Cases of influenza have been detected this year:  
52 x Influenza A  
17 x Influenza B



Gastroenteritis levels remain steady below baseline levels

**SYNDROMIC SURVEILLANCE  
REPORTING**

Reports were received from 216 reporters from 8 states and territories during the reporting period. During weeks 21 and 22 reporters saw a total of 36,292 patients.

**INFLUENZA-LIKE-ILLNESS (ILI)**

Nationally, ILI notifications significantly increased during the period with 243 notifications being reported in weeks 21–22. ILI rates reported in this period were 7 cases per 1000 consultations (weighted). This was higher than the previous fortnight where rates were 4 and 5 cases per 1000 consultations in weeks 19 and 20 respectively. For the same reporting period in 2022, ILI rates were significantly higher at 10 and 14 cases per 1000 consultations for weeks 21 and 22 respectively (see Fig. 5).

**GASTROENTERITIS**

Nationally, gastroenteritis notifications remained steady at 53 notifications reported. Gastroenteritis rates reported in this period slightly decreased to 2 and 1 cases per 1000 consultations in weeks 21 and 22 respectively, compared to 2 cases per 1000 consultations in weeks 19 and 20 (see Fig. 5).

\* ASPREN is funded by the Commonwealth's Department of Health, Office of Health Protection, Vaccine Preventable Disease Surveillance Section.

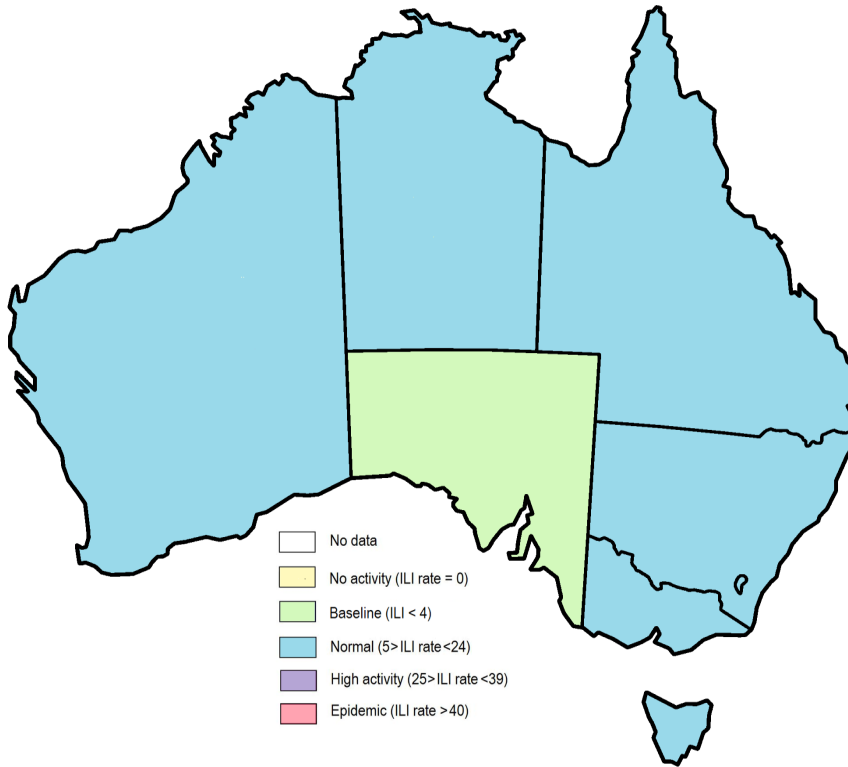


Figure 1. Map of ILI activity by jurisdiction, weeks 21 - 22, 2023.

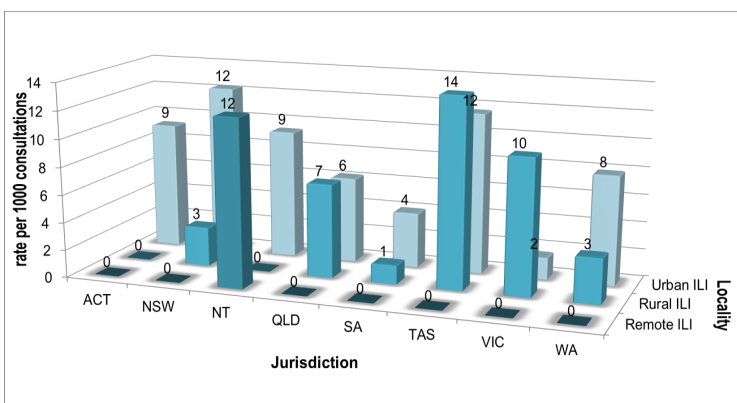


Figure 2. ASPREN rate of ILI by locality and jurisdiction, weeks 21 - 22, 2023.

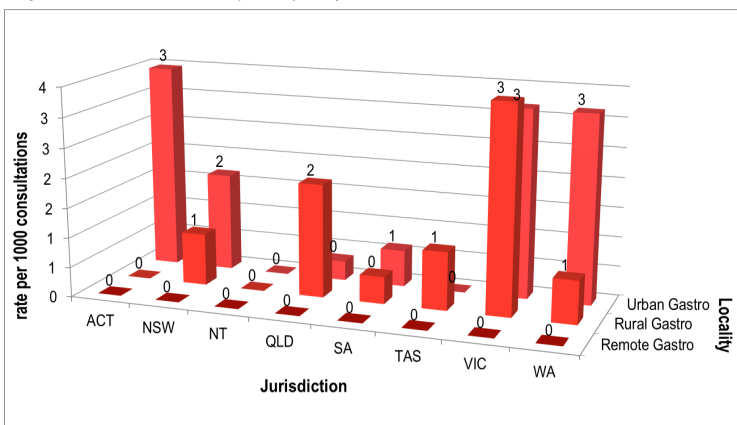


Figure 3. ASPREN rate of gastroenteritis by locality and jurisdiction, weeks 21 - 22, 2023.

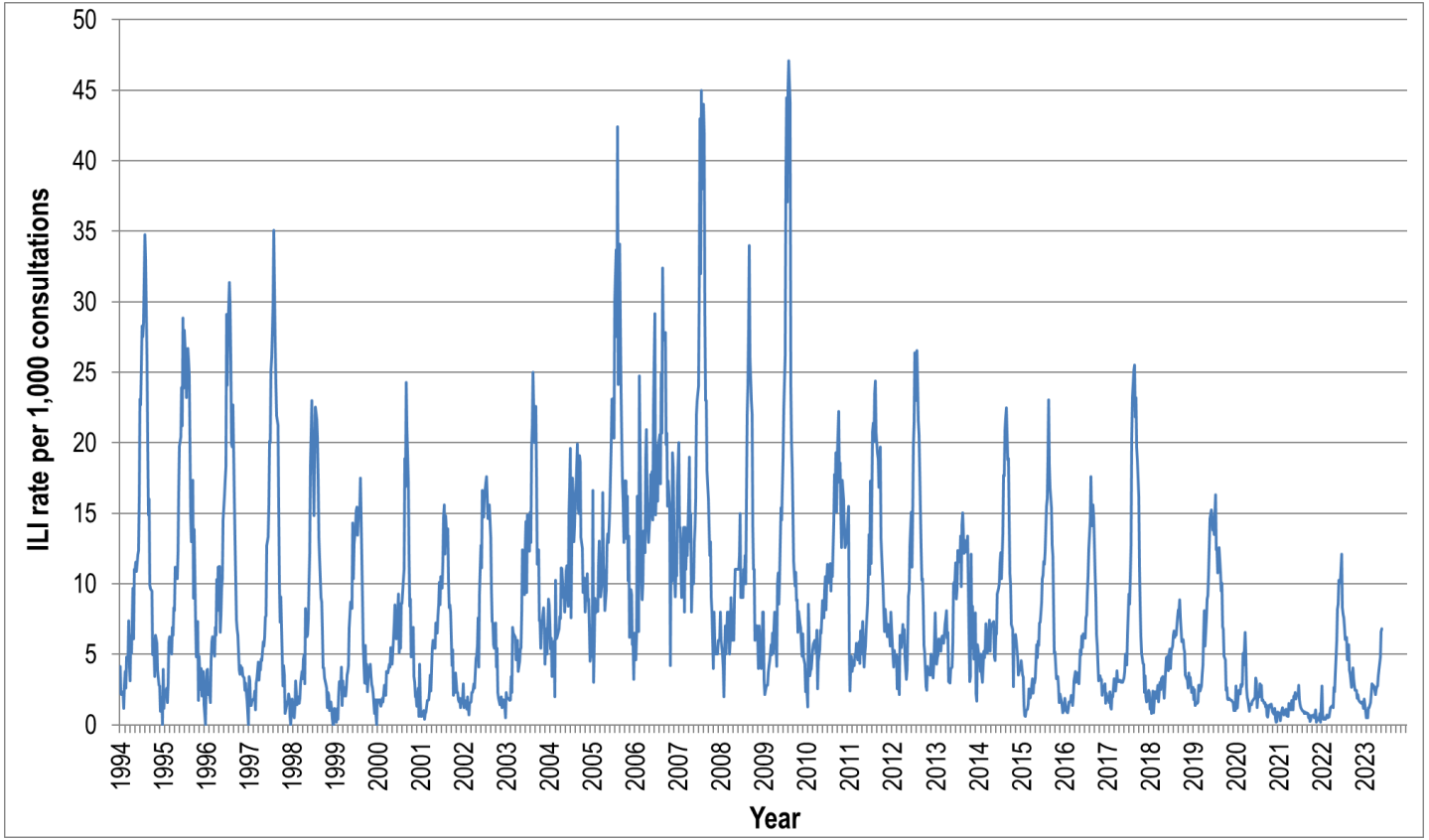


Figure 4. ASPREN ILI rates 1994 - 2023.

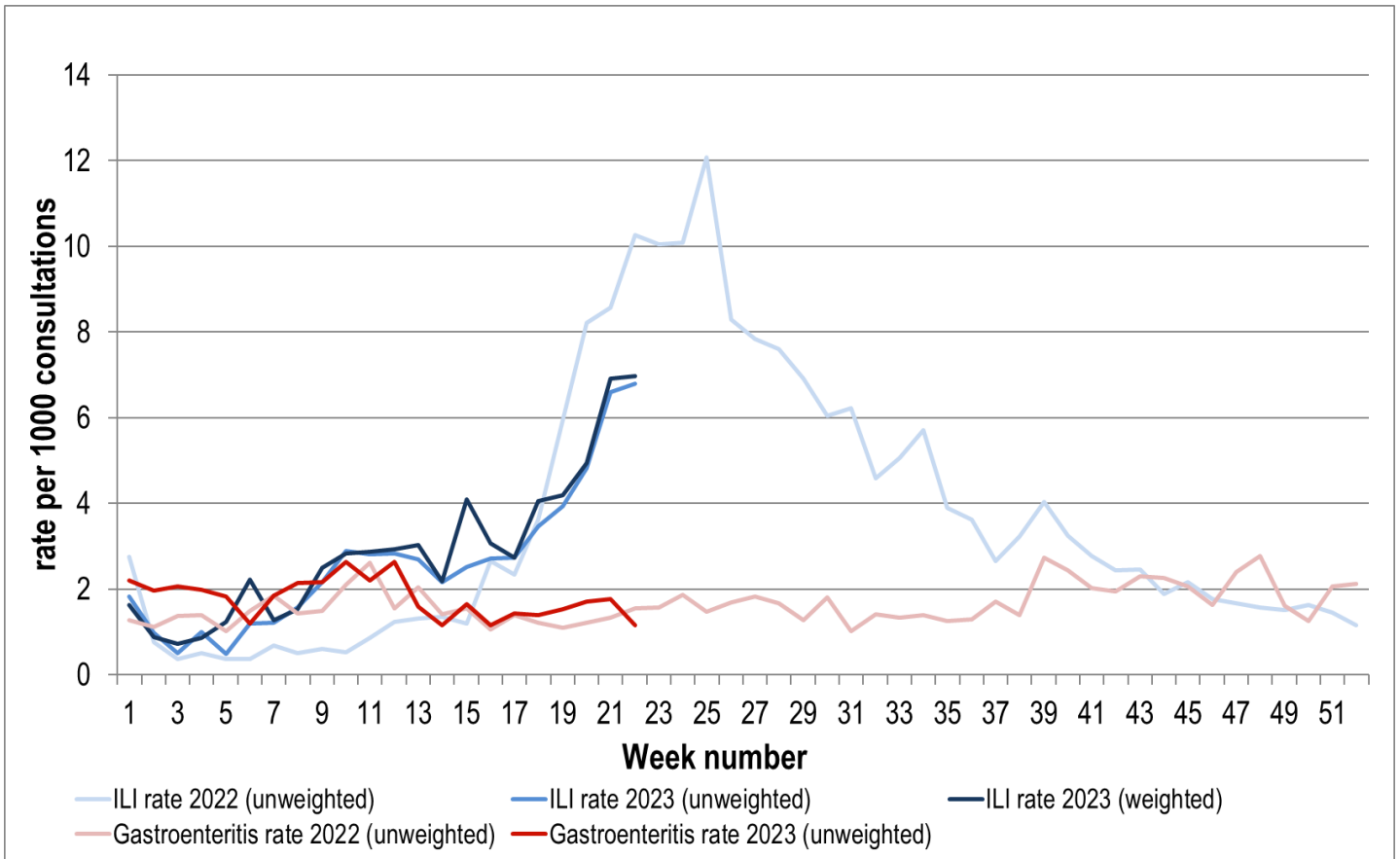


Figure 5. ASPREN ILI and gastroenteritis rates 2022-23. Weighted rates are weighted to account for population size differences between jurisdictions, using population estimates from the 2011 Australian Census.

**VIROLOGICAL SURVEILLANCE**

31% of all ILI patients were swab tested during weeks 21 and 22 (see Figure 6).

19 cases of Influenza A, 5 cases of Influenza B and 6 cases of SARS-CoV-2 were detected during this period. There were 17 cases of Rhinovirus detected making it the second most common respiratory virus circulating the nation at present (see figure 8).

# Viral laboratory data is provided by SA Pathology laboratory.

	Reporting Period 22 May - 4 June 2023	YTD 1 Jan - 4 June 2023
Total number of ILI notifications	243	927
Number of swab tests performed	75	374
% ILI patients tested	31%	40%
% of swab tests positive for influenza	32%	18%

Figure 6. ASPREN virological surveillance results overview for 2023 #

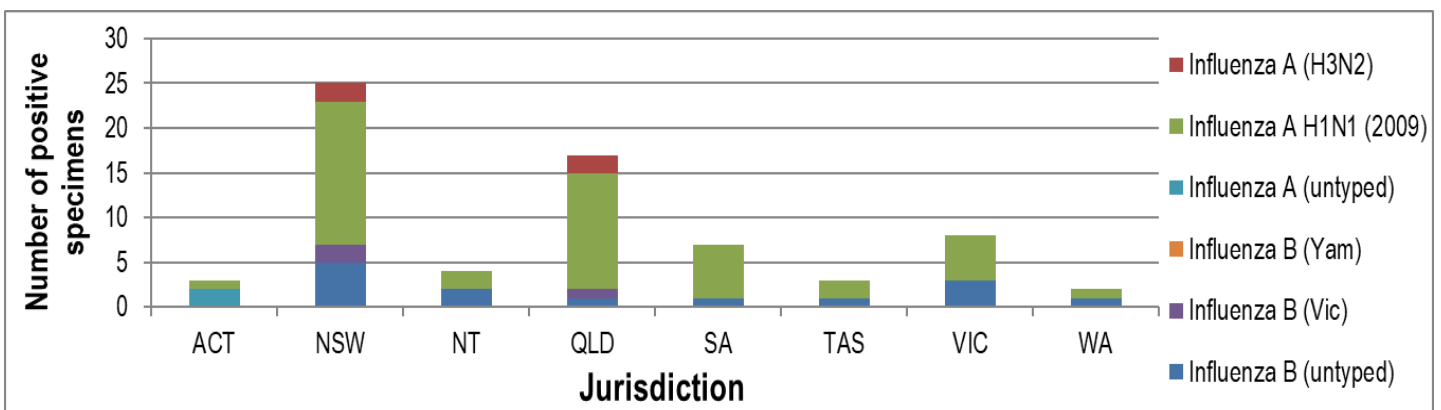


Figure 7. ASPREN influenza subtype analysis by jurisdiction for 2023 #

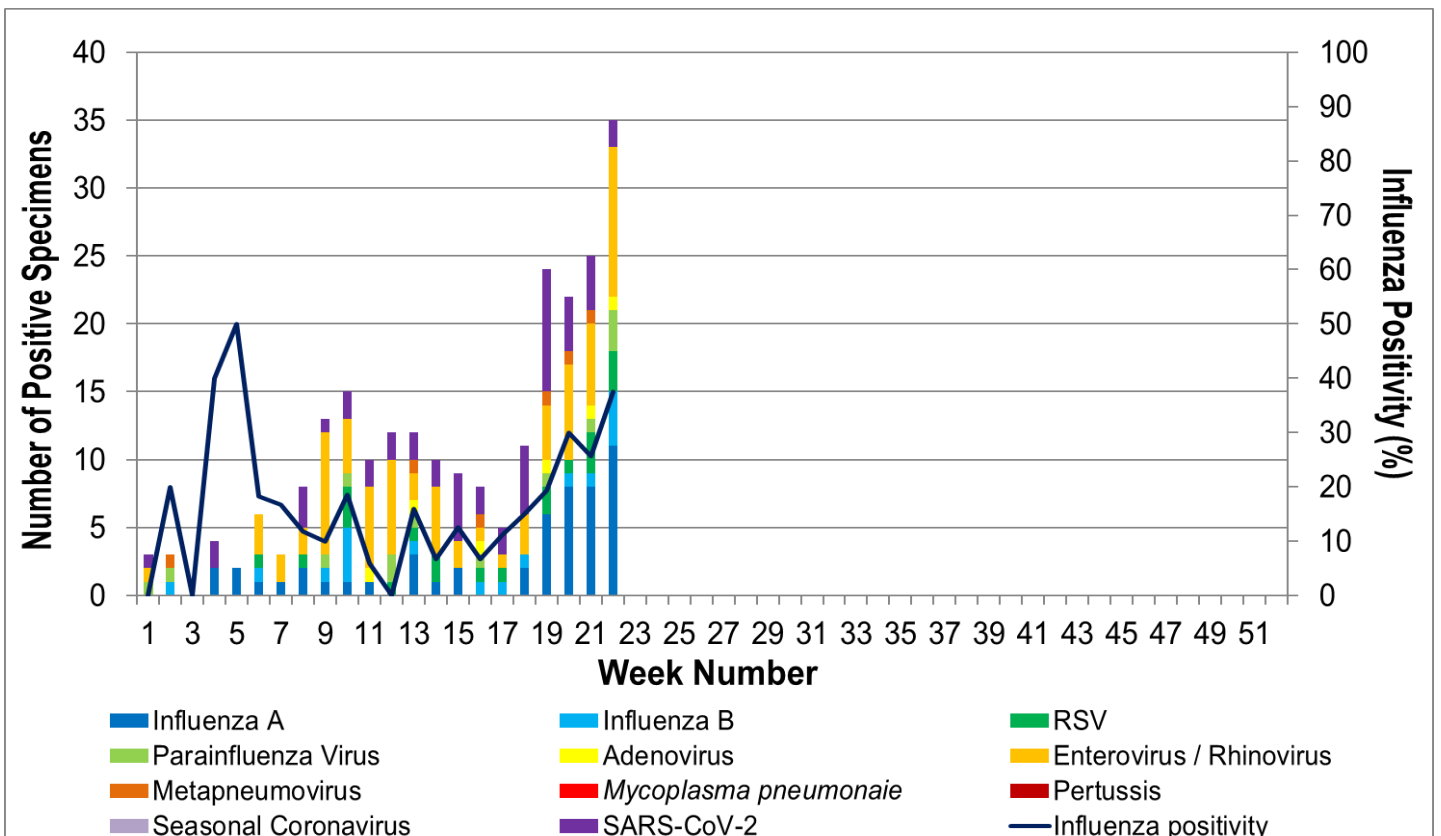


Figure 8. ASPREN, laboratory detection of influenza and other respiratory viruses for 2023 #

The Australian Sentinel Practices Research Network is supported by the Australian Government Department of Health (the Department). The opinions expressed in this paper are those of the authors, and do not necessarily represent the views of the Department.

Please note: This report is based on data available as at 8 June 2023. Delays in the reporting of data may cause data to change retrospectively.