

NATIONAL GP SENTINEL SURVEILLANCE FORTNIGHTLY REPORT

Combining data from The Australian Sentinel Practices Research Network and jurisdictional surveillance systems SPN(WA) and VIDRL

No. 17, 2013
12th August — 25th August 2013

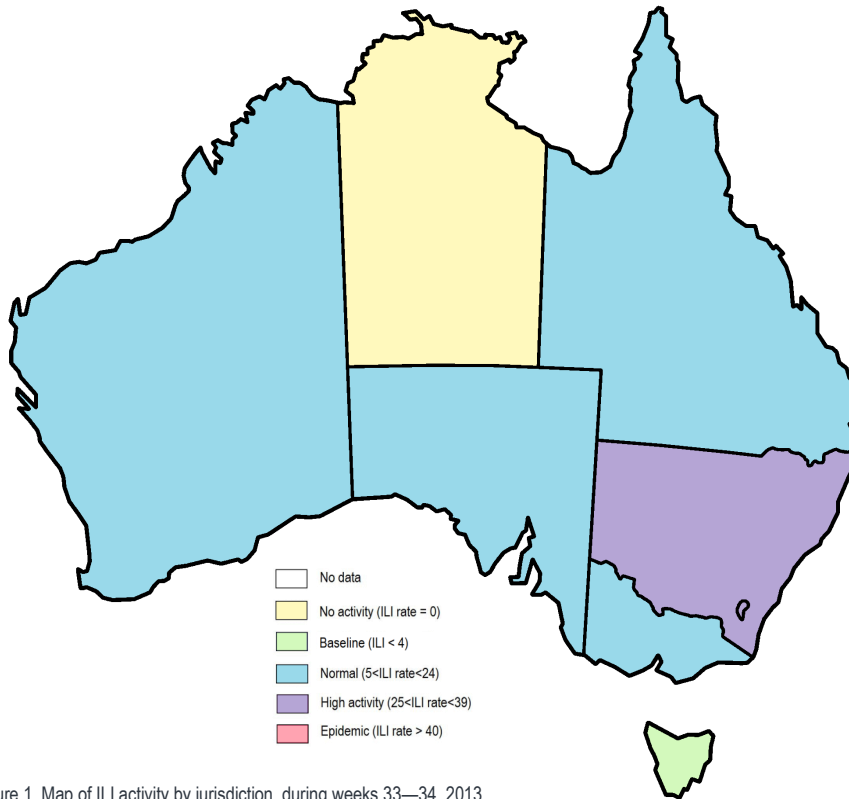


Figure 1. Map of ILI activity by jurisdiction, during weeks 33—34, 2013.

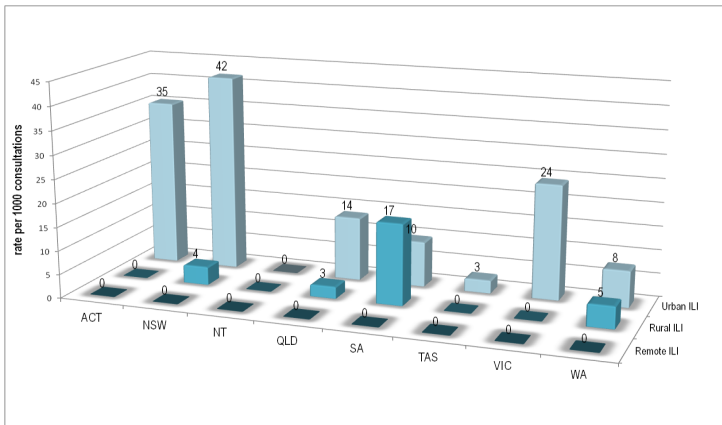


Figure 2. ASPREN + SPN(WA) rate of ILI by area and state, during weeks 33—34, 2013.

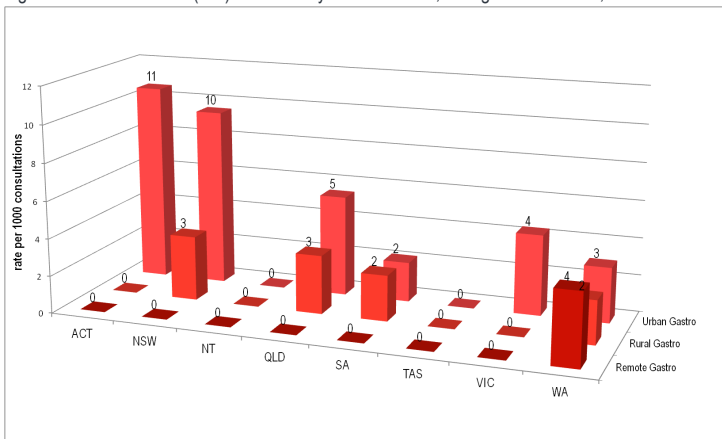


Figure 3. ASPREN + SPN(WA) rate of gastroenteritis by area & state, during weeks 33—34, 2013.

Please note: This report is based on data available as at 30 August 2013. Delays in the reporting of data may cause data to change retrospectively.

NATIONAL SUMMARY



Influenza-Like-Illness levels have increased, above baseline level.

58

Cases of influenza have been detected in this reporting period:
45 x Influenza A
13 x Influenza B

26%

Influenza positivity during the reporting period.

219

Cases of influenza have been detected in 2013:
159 x Influenza A
60 x Influenza B



Gastroenteritis levels remain low, slightly above baseline levels.

SYNDROMIC SURVEILLANCE

REPORTING

Reports were received from 474 GPs from 8 states and territories during the reporting period. During weeks 33 and 34 a total of 19,566 and 18,420 consultations were made, respectively.

INFLUENZA-LIKE-ILLNESS (ILI)

Nationally, ILI notifications remained steady over the period with 278 and 277 notifications in week 33 and 34 respectively. ILI rates reported in this period increased with 14 and 15 cases per 1000 consultations in weeks 33 and 34 respectively, compared to 13 and 10 cases per 1000 in weeks 31 and 32 respectively. For the same reporting period in 2012, ILI rates were higher at 16 and 15 cases per 1000 consultations (see Figure 5) respectively. On a state-by-state basis, it is important to note the increased ILI rate in urban NSW and ACT (see Figure 2).

GASTROENTERITIS

Nationally, gastro notifications increased over the period with 56 and 85 notifications in weeks 33 and 34 respectively. Gastroenteritis rates reported in this period have remained steady with 3 and 4 cases per 1000 consultations for weeks 33 and 34 respectively, compared to 4 cases per 1000 consultations, for weeks 31 and 32 respectively (see Figure 3).

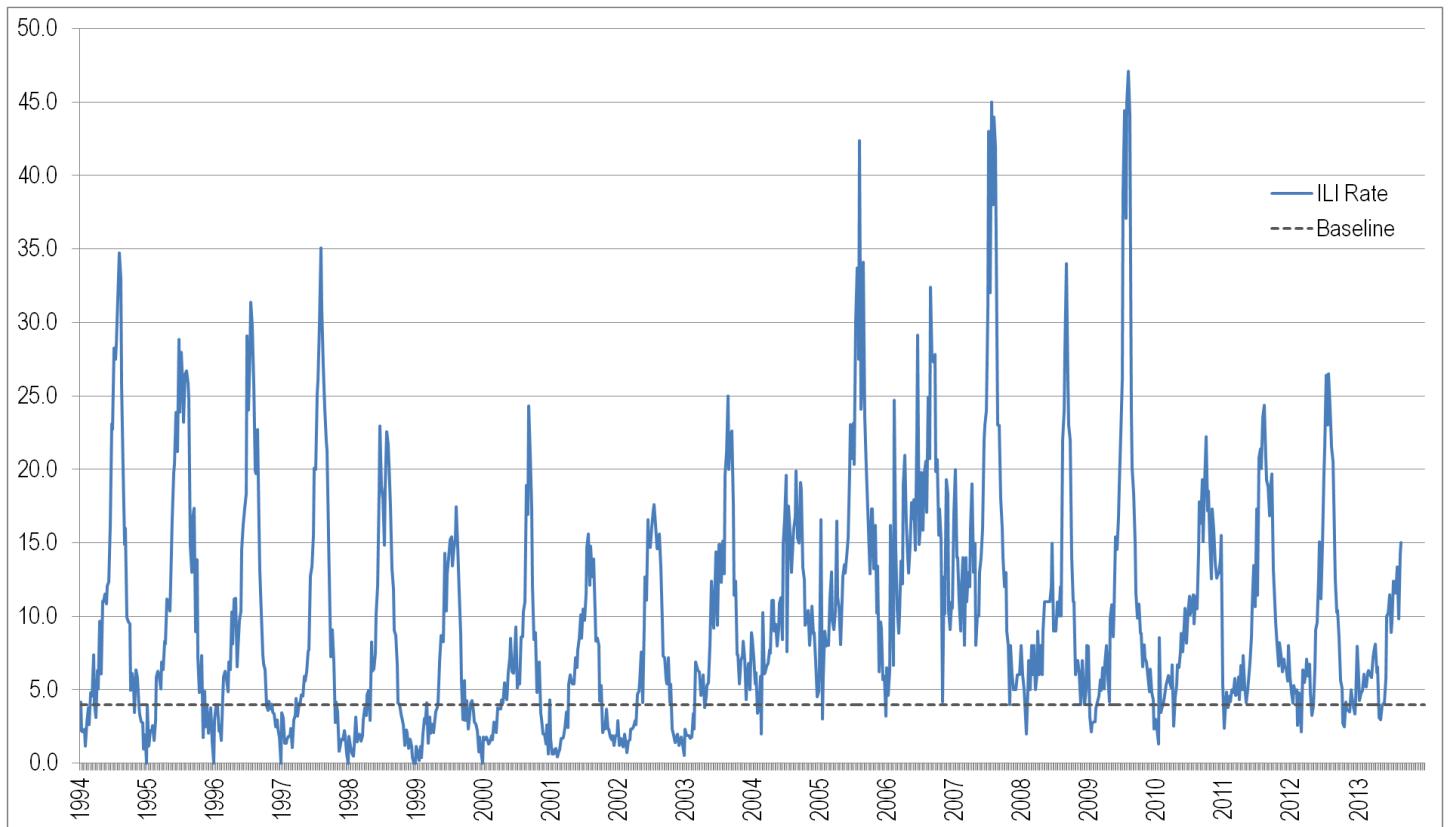


Figure 4. Rates of ILI for ASPREN + SPN(WA) + VIDRL during 1994 - 2013.

Note: From 2013, results are weighted to account for population size differences between jurisdictions, using population estimates from the 2011 Australian Census.

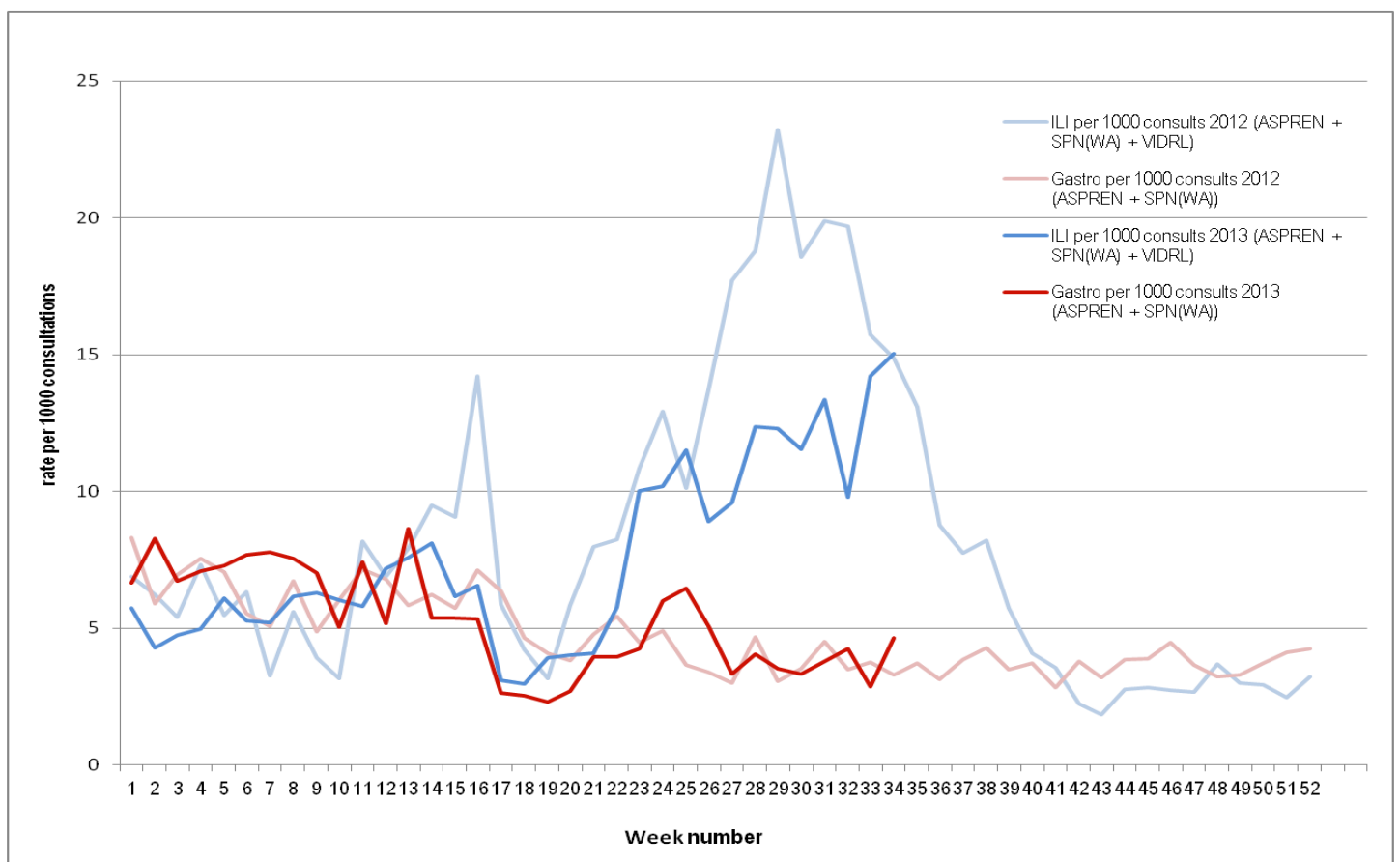


Figure 5. ILI and Gastroenteritis rates 2012-13.

INFLUENZA SWAB TESTING

45% of all ILI patients were swab tested during weeks 33–34 (see Figure 6). Notably, there were 58 cases of Influenza detected during this period, 23 Flu A (untyped), 9 Flu A (H1N1 2009), 13 Flu A (H3N2), and 13 Flu B. There were also 16 cases of RSV detected making it the second most common respiratory virus circulating the nation at present (see figure 8).

	Reporting Period	
	12 Aug 2013 - 25 Aug 2013	YTD 1 Jan 2013 - 25 Aug 2013
Total number of ILI notifications	555	4971
Number of swab tests performed	248	1715
% ILI patients tested	45%	34%
% of swab tests positive for influenza	23%	13%

Figure 6. ASPREN + SPN(WA) swab testing results overview for 2013.

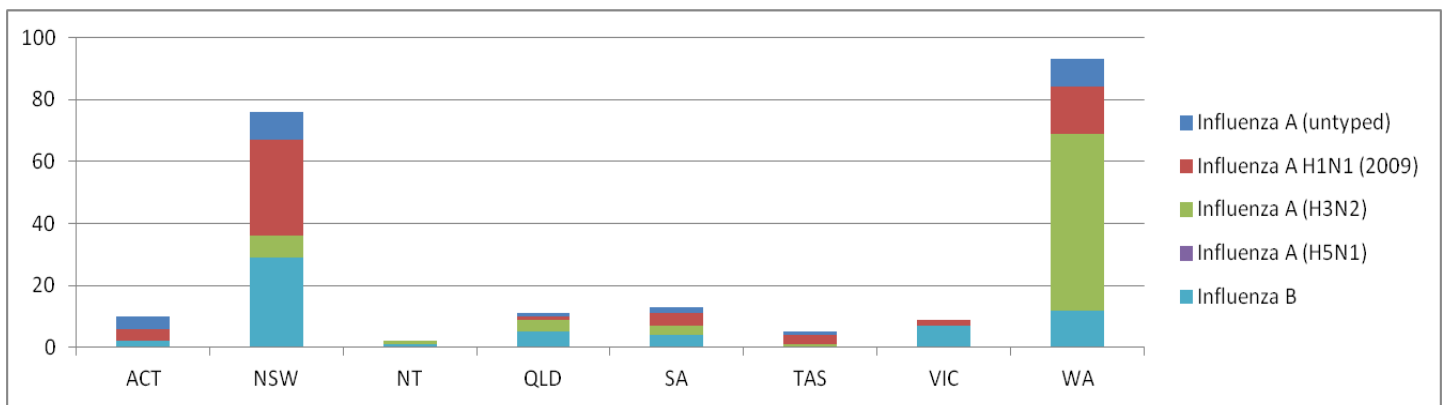


Figure 7. ASPREN + SPN(WA) + VIDRL influenza subtype analysis by jurisdiction for 2013.

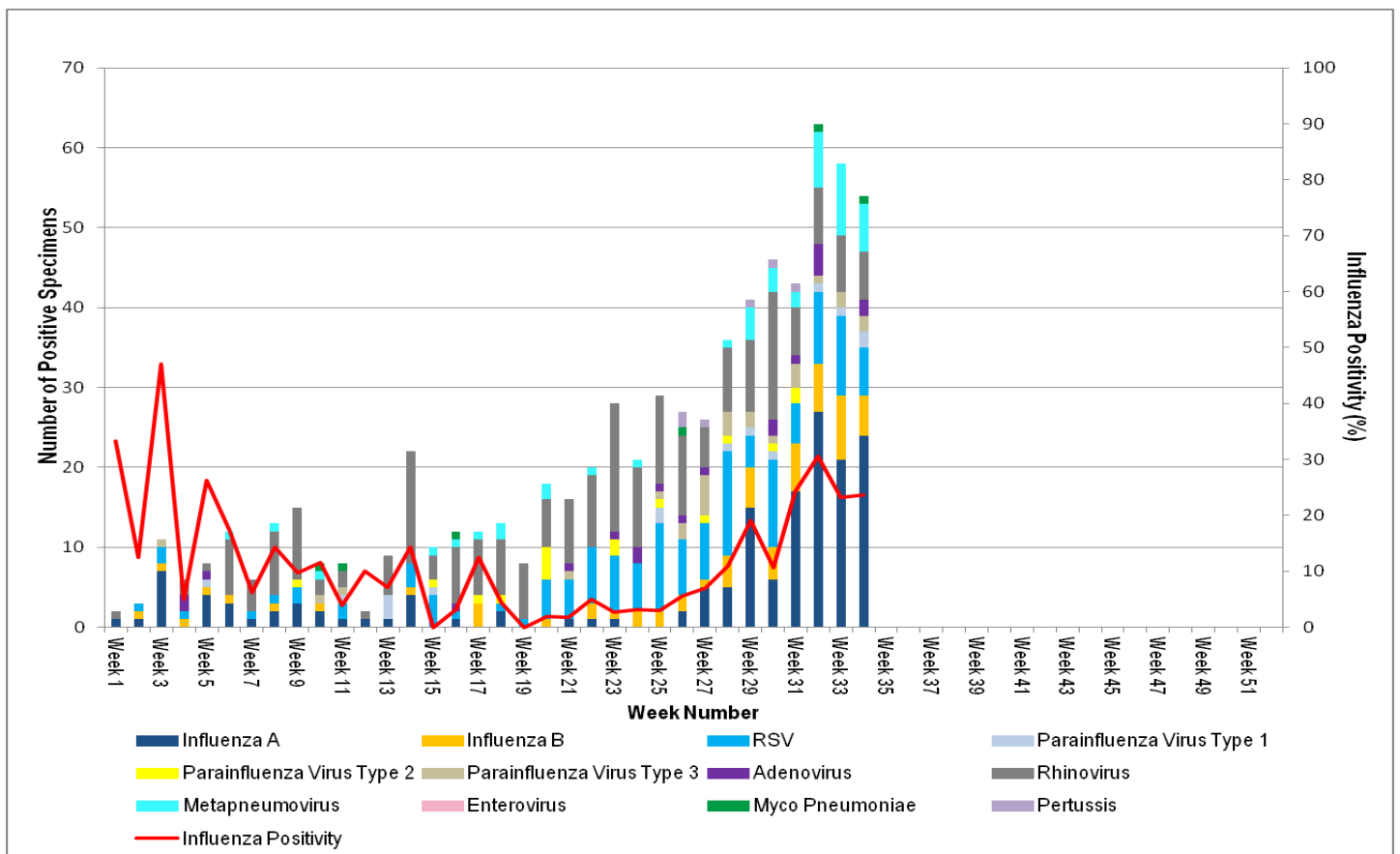


Figure 8. ASPREN + SPN(WA) + VIDRL laboratory detection of influenza and other respiratory viruses during 2013.

Please note: This report is based on data available as at 30 August 2013. Delays in the reporting of data may cause data to change retrospectively.