

**NATIONAL PRIMARY CARE INFECTIOUS DISEASES  
SENTINEL SURVEILLANCE FORTNIGHTLY REPORT**

From The Australian Sentinel Practices Research Network (ASPREN) \*

No. 10, 2023 - 8th May — 21st May 2023

**NATIONAL SUMMARY**



Influenza-like-illness levels are increasing

**10**

Case of influenza have been detected in this reporting period  
10 x Influenza A  
0 x Influenza B

**22%**

Influenza positivity during the reporting period.

**38**

Cases of influenza have been detected this year:  
27 x Influenza A  
11 x Influenza B



Gastroenteritis levels remain steady below baseline levels

**SYNDROMIC SURVEILLANCE  
REPORTING**

Reports were received from 193 reporters from 8 states and territories during the reporting period. During weeks 19 and 20 reporters saw a total of 33,388 patients.

**INFLUENZA-LIKE-ILLNESS (ILI)**

Nationally, ILI notifications significantly increased during the period with 146 notifications being reported in weeks 19–20. ILI rates reported in this period were 4 and 5 cases per 1000 consultations (weighted). This was slightly higher than the previous fortnight where rates were 3 and 4 cases per 1000 consultations in weeks 17 and 18 respectively. For the same reporting period in 2022, ILI rates were significantly higher at 9 and 12 cases per 1000 consultations for weeks 19 and 20 respectively (see Fig. 5).

**GASTROENTERITIS**

Nationally, gastroenteritis notifications slightly increased to 54 notifications reported. Gastroenteritis rates reported in this period slightly increased to 2 cases per 1000 consultations in weeks 19 and 20, compared to 1 case per 1000 consultations in weeks 17 and 18 (see Fig. 5).

\* ASPREN is funded by the Commonwealth's Department of Health, Office of Health Protection, Vaccine Preventable Disease Surveillance Section.

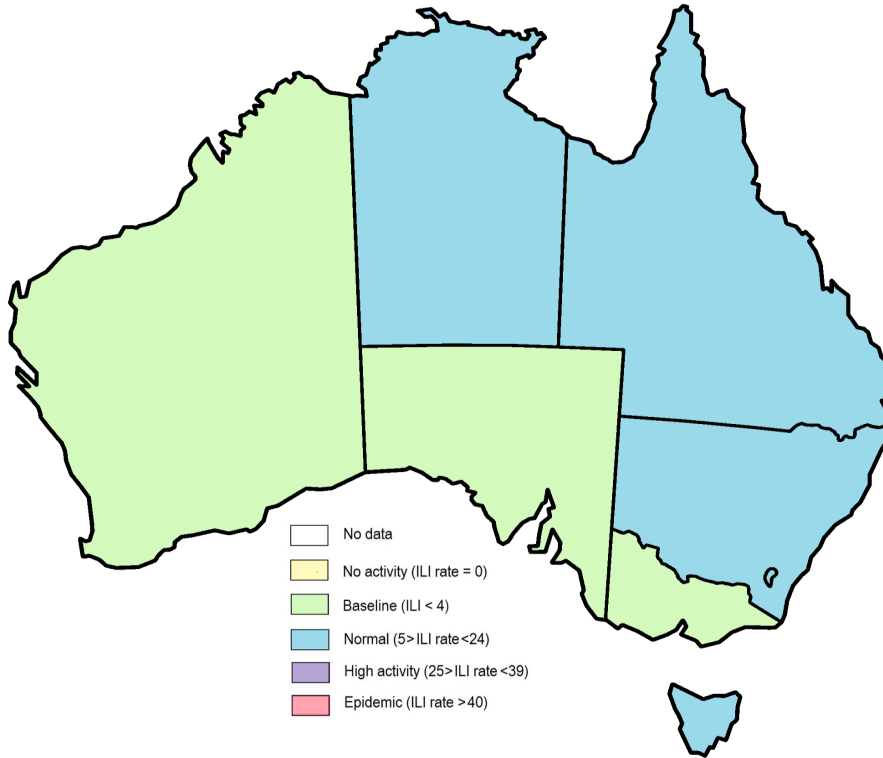


Figure 1. Map of ILI activity by jurisdiction, weeks 19 - 20, 2023.

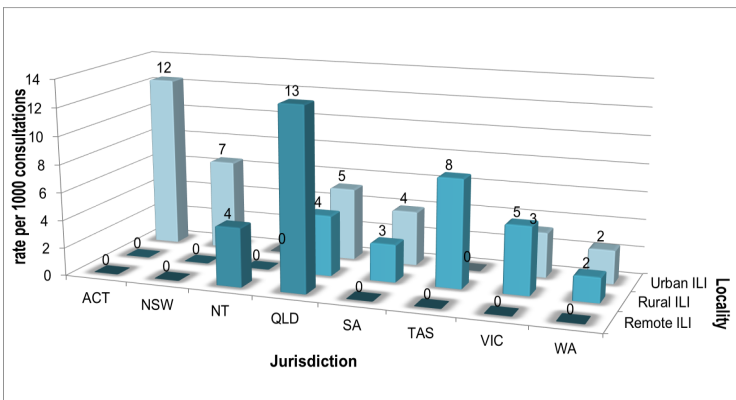


Figure 2. ASPREN rate of ILI by locality and jurisdiction, weeks 19 - 20, 2023.

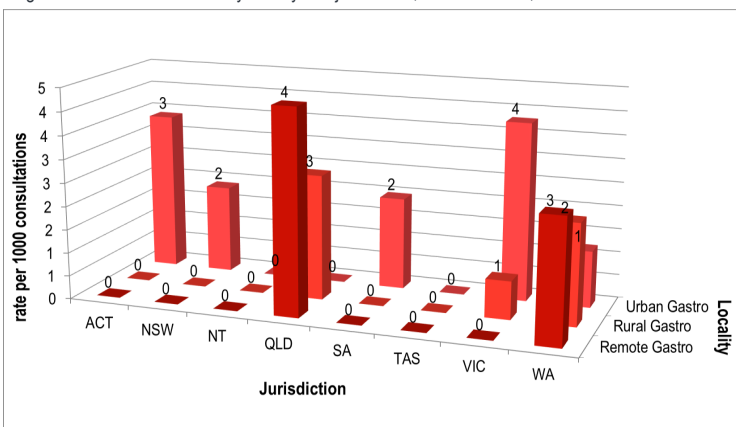


Figure 3. ASPREN rate of gastroenteritis by locality and jurisdiction, weeks 19 - 20, 2023.

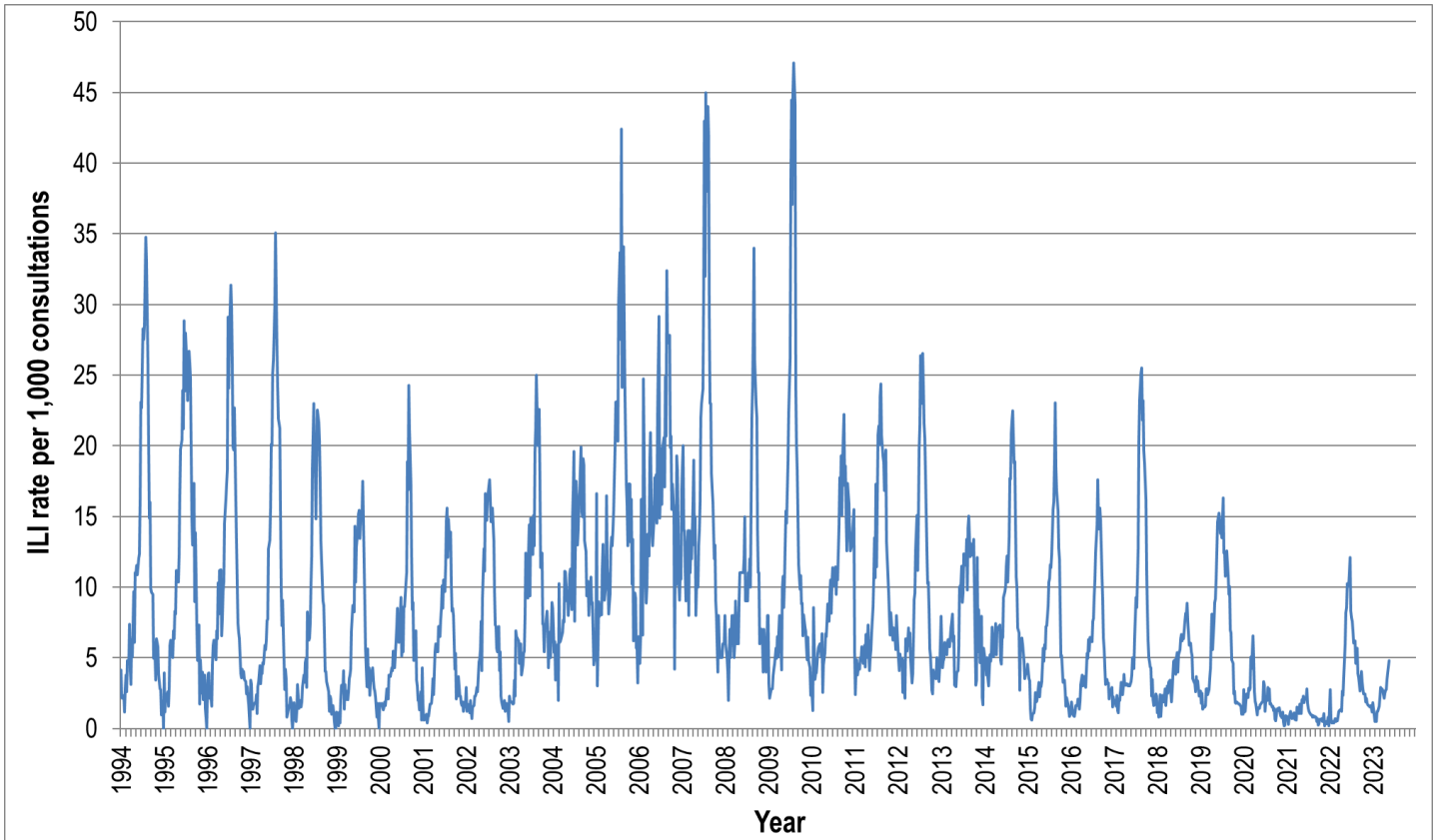


Figure 4. ASPREN ILI rates 1994 - 2023.

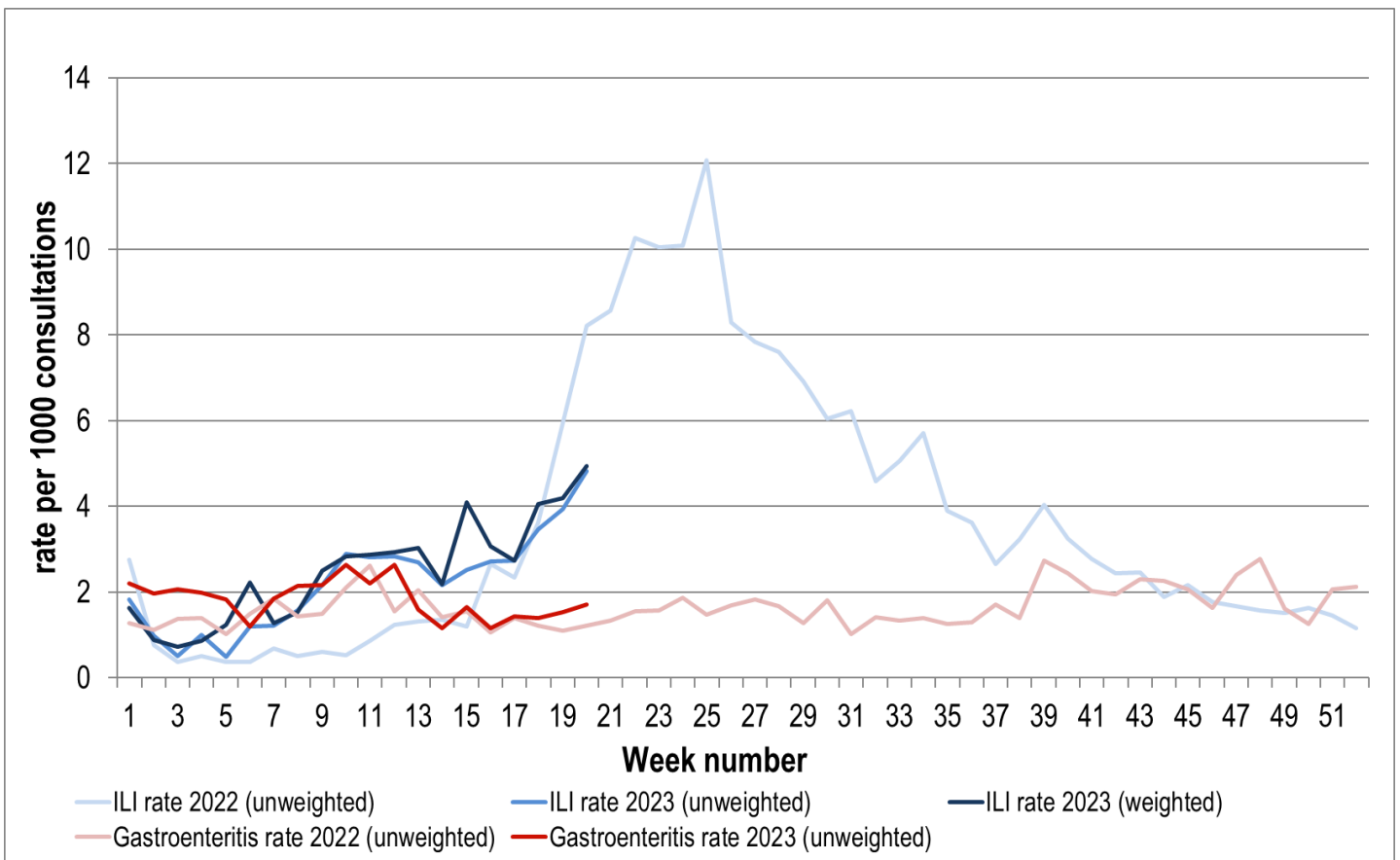


Figure 5. ASPREN ILI and gastroenteritis rates 2022-23. Weighted rates are weighted to account for population size differences between jurisdictions, using population estimates from the 2011 Australian Census.

### VIROLOGICAL SURVEILLANCE

32% of all ILI patients were swab tested during weeks 19 and 20 (see Figure 6).

10 cases of Influenza A and 10 cases of SARS-CoV-2 were detected during this period. There were 9 cases of Rhinovirus detected making it the third most common respiratory virus circulating the nation at present (see figure 8).

# Viral laboratory data is provided by SA Pathology laboratory.

	Reporting Period 8 May - 21 May 2023	YTD 1 Jan - 21 May 2023
Total number of ILI notifications	146	684
Number of swab tests performed	46	279
% ILI patients tested	32%	41%
% of swab tests positive for influenza	22%	14%

Figure 6. ASPREN virological surveillance results overview for 2023 #

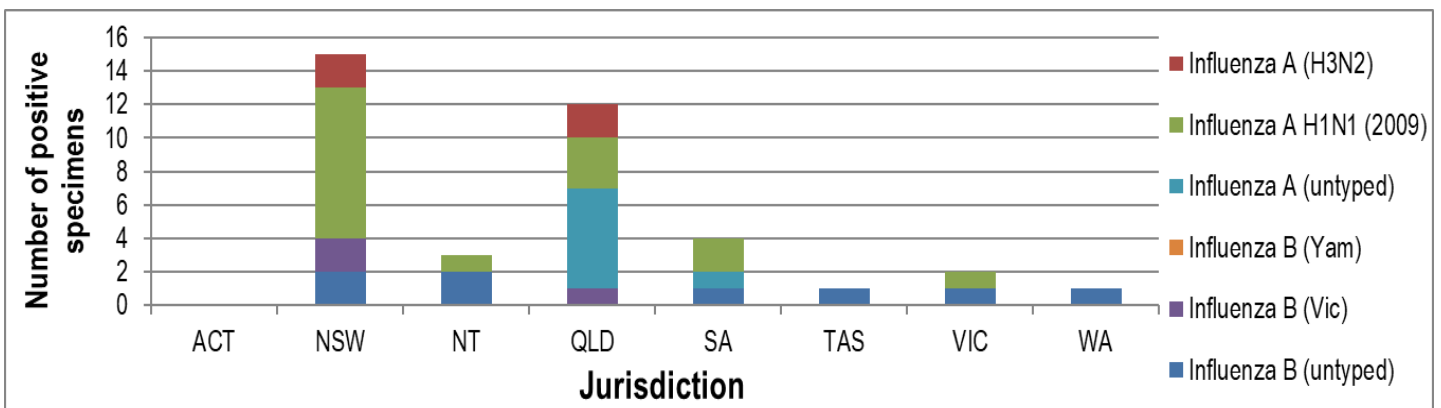


Figure 7. ASPREN influenza subtype analysis by jurisdiction for 2023 #

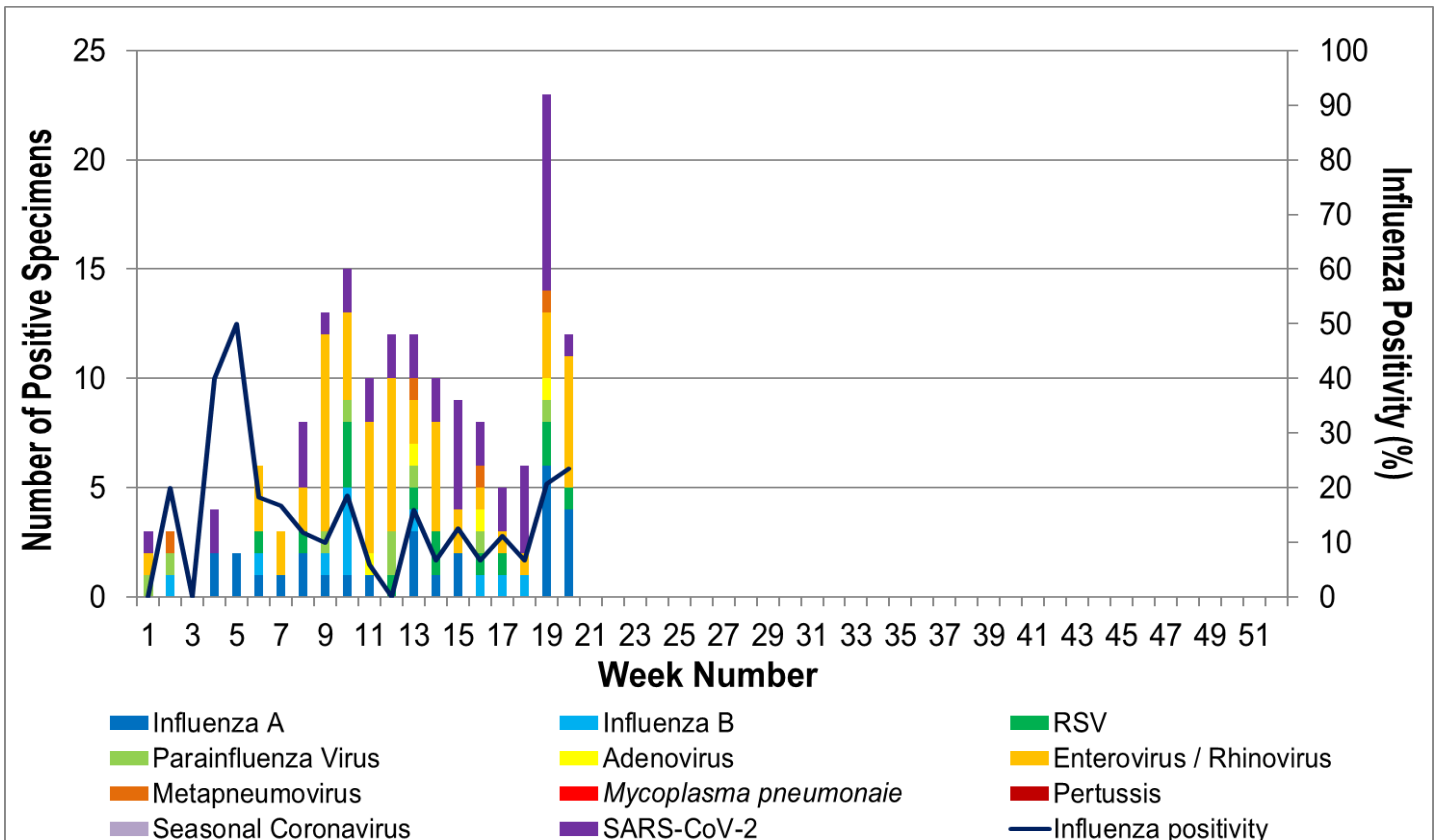


Figure 8. ASPREN, laboratory detection of influenza and other respiratory viruses for 2023 #

The Australian Sentinel Practices Research Network is supported by the Australian Government Department of Health (the Department). The opinions expressed in this paper are those of the authors, and do not necessarily represent the views of the Department.

Please note: This report is based on data available as at 25 May 2023. Delays in the reporting of data may cause data to change retrospectively.