

NATIONAL SUMMARY



Influenza-Like-Illness levels have increased, above baseline level.

4

Cases of influenza have been detected in this reporting period:
2 x Influenza A (untyped)
2 x Influenza B

5%

Influenza positivity during the reporting period.

60

Cases of influenza have been detected in 2013:
39 x Influenza A (untyped)
21 x Influenza B



Gastroenteritis levels remain low, slightly above baseline levels.

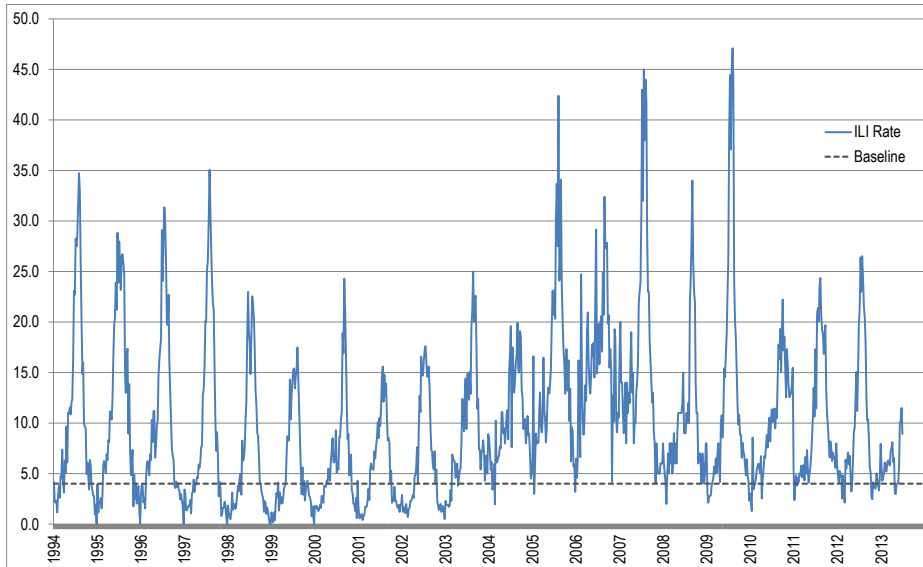


Figure 1. Rates of ILI for ASPREN + SPN(WA) + VIDRL during 1994 - 2013.

Note: From 2013, results are weighted to account for population size differences between jurisdictions, using population estimates from the 2011 Australian Census.

SYNDROMIC SURVEILLANCE

REPORTING

Reports were received from 325 GPs from 8 states and territories during the reporting period. During weeks 25 and 26 a total of 18,940 and 8,970 consultations were made, respectively.

INFLUENZA-LIKE-ILLNESS (ILI)

Nationally, ILI notifications decreased over the period with 218 and 80 notifications in week 25 and 26 respectively. ILI rates reported in this period increased significantly with 11 and 9 cases per 1000 consultations in weeks 25 and 26 respectively, compared to 10 cases per 1000 in weeks 23 and 24 respectively. For the same reporting period in 2012, ILI rates were slightly higher at 10 and 14 cases per 1000 consultations respectively (see Figure 1). On a state-by-state basis, it is important to note the increased ILI rate in urban NSW (see figure 3).

GASTROENTERITIS

Nationally, gastro notifications decreased over the period with 122 and 45 notifications in weeks 25 and 26 respectively. Gastroenteritis rates reported in this period have remained steady with 6 and 5 cases per 1000 consultations for weeks 25 and 26 respectively, compared to 4 and 6 cases per 1000 consultations, for weeks 23 and 24 (see Figure 4).

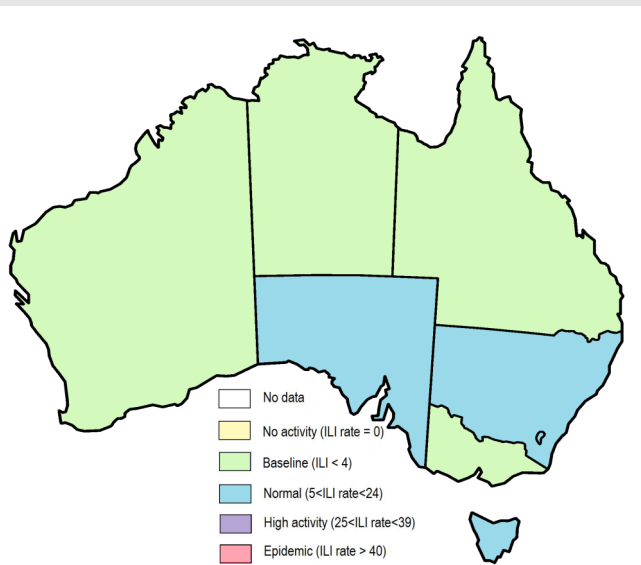


Figure 2. Map of ILI activity by jurisdiction, during weeks 25—26, 2013.

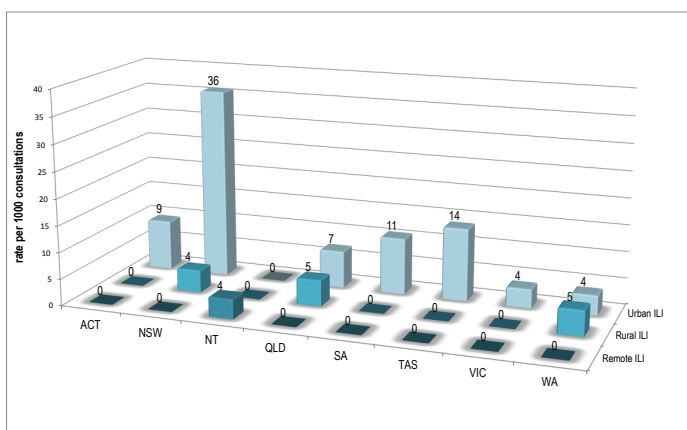


Figure 3. ASPREN + SPN(WA) rate of ILI by area and state, during weeks 25—26, 2013.

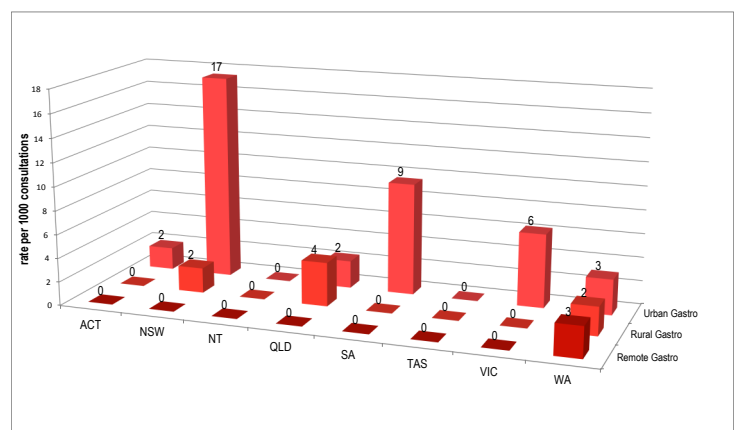


Figure 4. ASPREN + SPN(WA) rate of gastroenteritis by area & state, during weeks 25—26, 2013.

INFLUENZA SWAB TESTING

39% of all ILI patients were swab tested during weeks 25–26 (see Figure 5). Notably, there were 4 cases of Influenza detected during this period, 2 Flu A (untyped) and 2 Flu B. There were also 17 cases of RSV detected making it the most common respiratory virus circulating the nation at present (see figure 7).

	Reporting Period 17 June 2013 - 23 June 2013	YTD 1 Jan 2013 - 23 June 2013
Total number of ILI notifications	298	3162
Number of swab tests performed	115	874
% ILI patients tested	39%	28%
% of swab tests positive for influenza	5%	7%

Figure 5. ASPREN + SPN(WA) swab testing results overview for 2013.

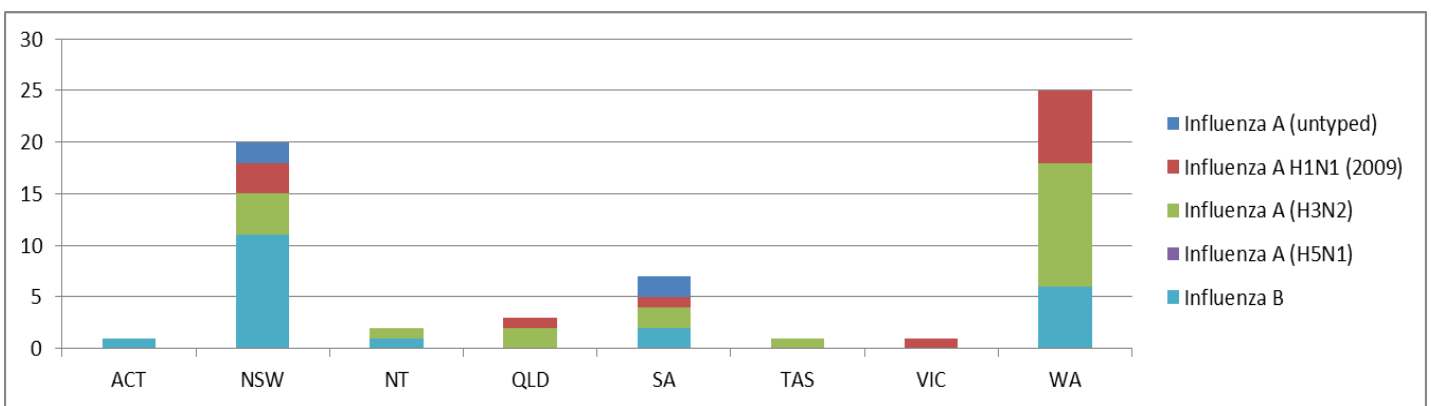


Figure 6. ASPREN + SPN(WA) + VIDRL influenza subtype analysis by jurisdiction for 2013.

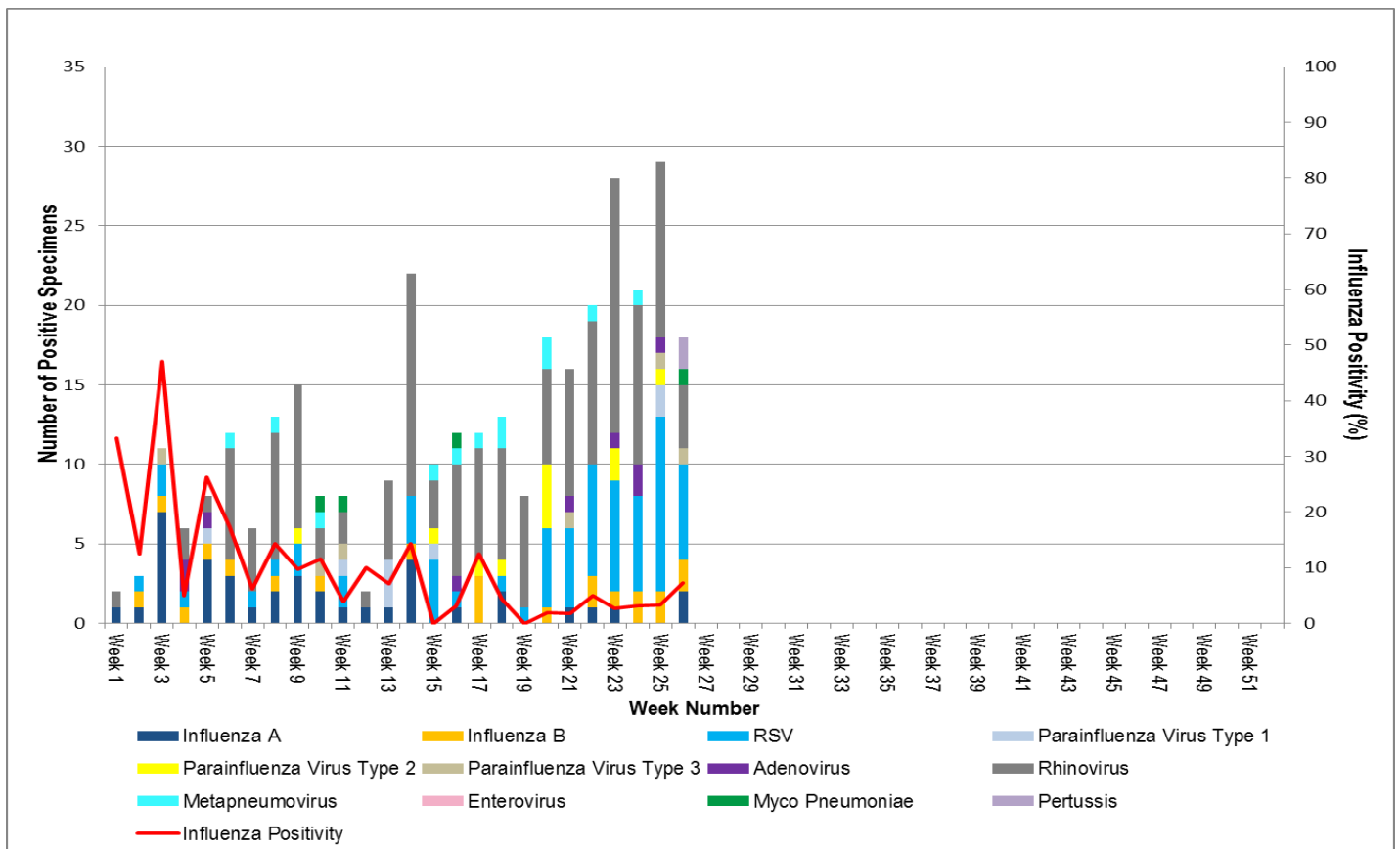


Figure 7. ASPREN + SPN(WA) + VIDRL laboratory detection of influenza and other respiratory viruses during 2013.

Please note: This report is based on data available as at 5 July 2013. Delays in the reporting of data may cause data to change retrospectively.