

**NATIONAL SUMMARY**



Influenza-Like-Illness levels remain low, slightly above baseline levels.

**4**

Cases of influenza have been detected in this reporting period:  
1 x Influenza A (untyped)  
3 x Influenza B

**3%**

Influenza positivity during the reporting period.

**54**

Cases of influenza have been detected in 2013:  
37 x Influenza A (untyped)  
17 x Influenza B



Gastroenteritis levels remain low, slightly above baseline levels.

**SYNDROMIC SURVEILLANCE**

**REPORTING**

Reports were received from 321 GPs from 8 states and territories during the reporting period. During weeks 23 and 24 a total of 19,278 and 16,667 consultations were made, respectively.

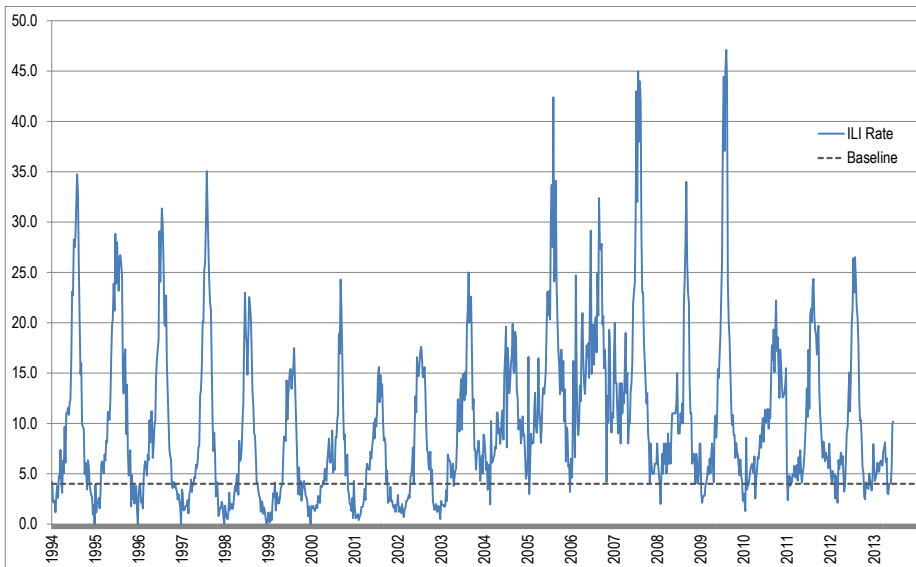


Figure 1. Rates of ILI for ASPREN + SPN(WA) + VIDRL during 1994 - 2013.  
Note: From 2013, results are weighted to account for population size differences between jurisdictions, using population estimates from the 2011 Australian Census.

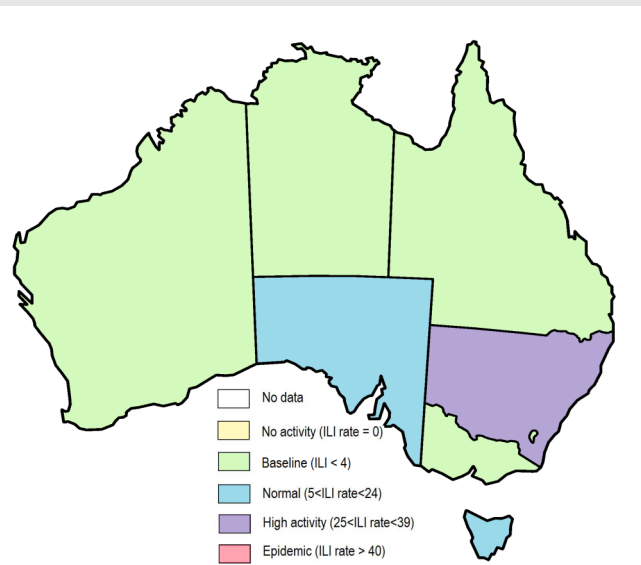


Figure 2. Map of ILI activity by jurisdiction, during weeks 23—24, 2013.

**INFLUENZA-LIKE-ILLNESS (ILI)**

Nationally, ILI notifications increased significantly over the period with 193 and 170 notifications in week 23 and 24 respectively. ILI rates reported in this period increased significantly with 10 cases per 1000 consultations in weeks 23 and 24, compared to 4 and 6 cases per 1000 in weeks 21 and 22 respectively. For the same reporting period in 2012, ILI rates were slightly higher at 11 and 13 cases per 1000 consultations respectively (see Figure 1). On a state-by-state basis, it is important to note the increased ILI rate in urban NSW (see figure 3).

**GASTROENTERITIS**

Nationally, gastro notifications increased over the period with 82 and 100 notifications in weeks 23 and 24 respectively. Gastroenteritis rates reported in this period have increased with 4 and 6 cases per 1000 consultations for weeks 23 and 24 respectively, compared to 4 cases per 1000 consultations, for weeks 21 and 22 (see Figure 4).

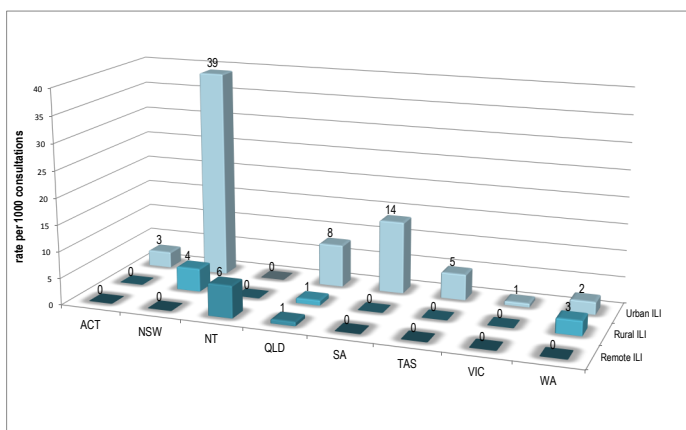


Figure 3. ASPREN + SPN(WA) rate of ILI by area and state, during weeks 23—24, 2013.

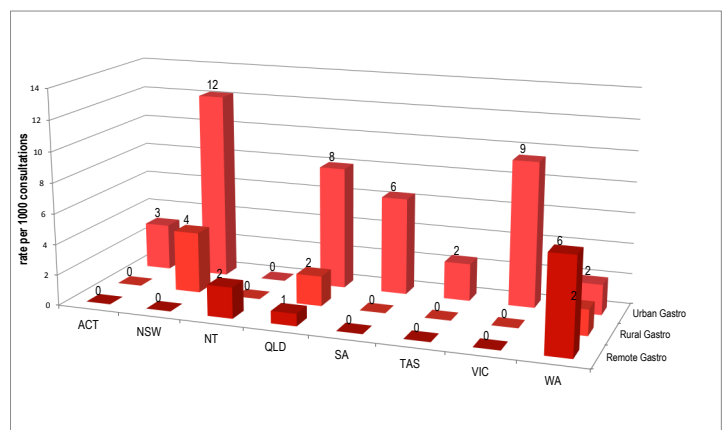


Figure 4. ASPREN + SPN(WA) rate of gastroenteritis by area & state, during weeks 23—24, 2013.

**INFLUENZA SWAB TESTING**

33% of all ILI patients were swab tested during weeks 23–24 (see Figure 5). Notably, there were 4 cases of Influenza detected during this period, 1 Flu A (H3N2) and 3 Flu B. There were also 23 cases of Rhinovirus detected making it the most common respiratory virus circulating the nation at present (see figure 7).

	Reporting Period 3 June 2013 - 16 June 2013	YTD 1 Jan 2013 - 16 June 2013
Total number of ILI notifications	363	2864
Number of swab tests performed	118	736
% ILI patients tested	33%	26%
% of swab tests positive for influenza	3%	7%

Figure 5. ASPREN + SPN(WA) swab testing results overview for 2013.

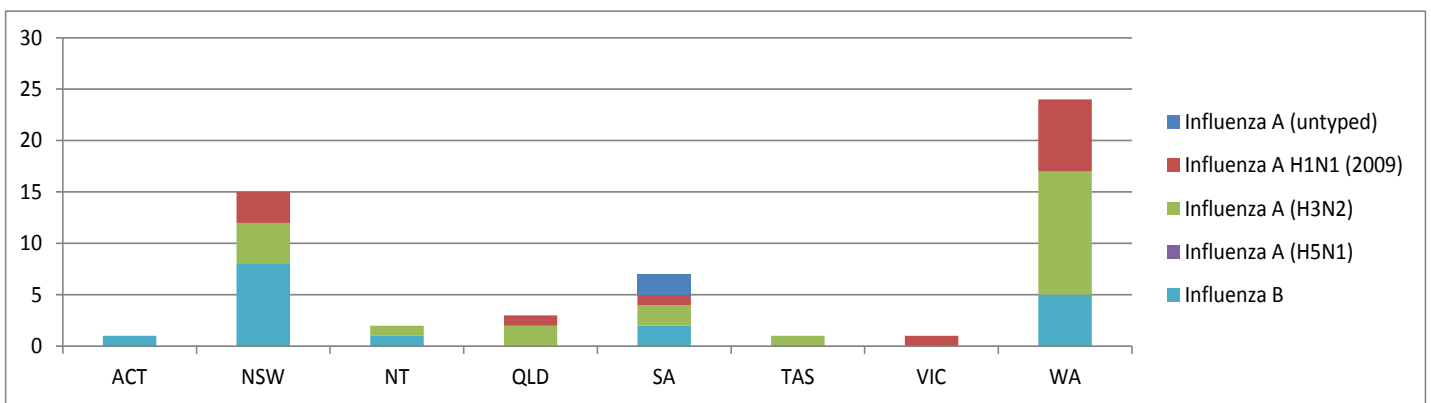


Figure 6. ASPREN + SPN(WA) + VIDRL influenza subtype analysis by jurisdiction for 2013.

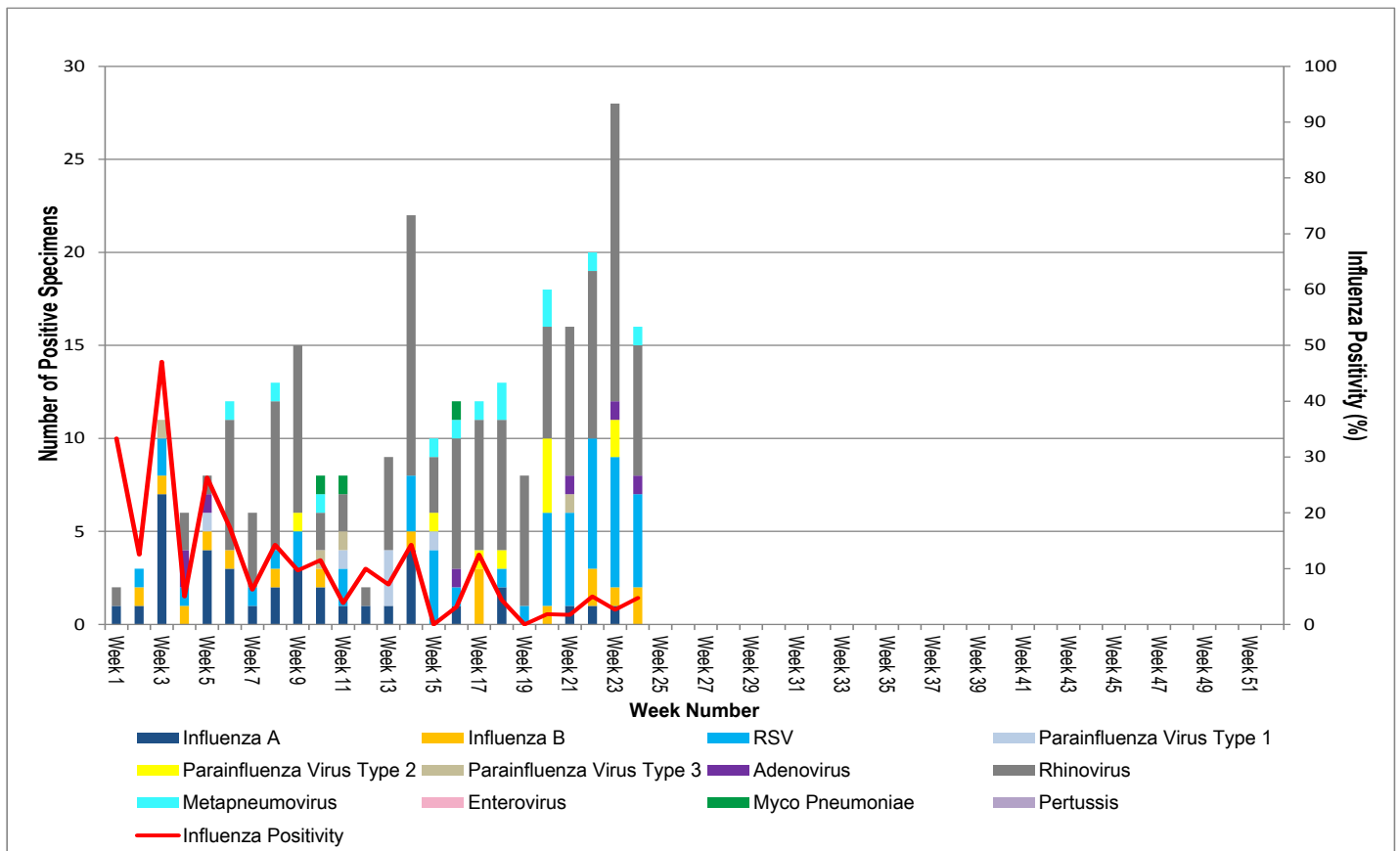


Figure 7. ASPREN + SPN(WA) + VIDRL laboratory detection of influenza and other respiratory viruses during 2013.

Please note: This report is based on data available as at 21 June 2013. Delays in the reporting of data may cause data to change retrospectively.