

**NATIONAL SUMMARY**



Influenza-Like-Illness levels remain low, slightly above baseline levels.

**3**

Cases of influenza have been detected in this reporting period:  
1 x Influenza A (untyped)  
2 x Influenza B

**3%**

Influenza positivity during the reporting period.

**49**

Cases of influenza have been detected in 2013:  
35 x Influenza A (untyped)  
14 x Influenza B



Gastroenteritis levels remain low, slightly above baseline levels.

**SYNDROMIC SURVEILLANCE**

**REPORTING**

Reports were received from 322 GPs from 8 states and territories during the reporting period. During weeks 21 and 22 a total of 20,111 and 15,745 consultations were made, respectively.

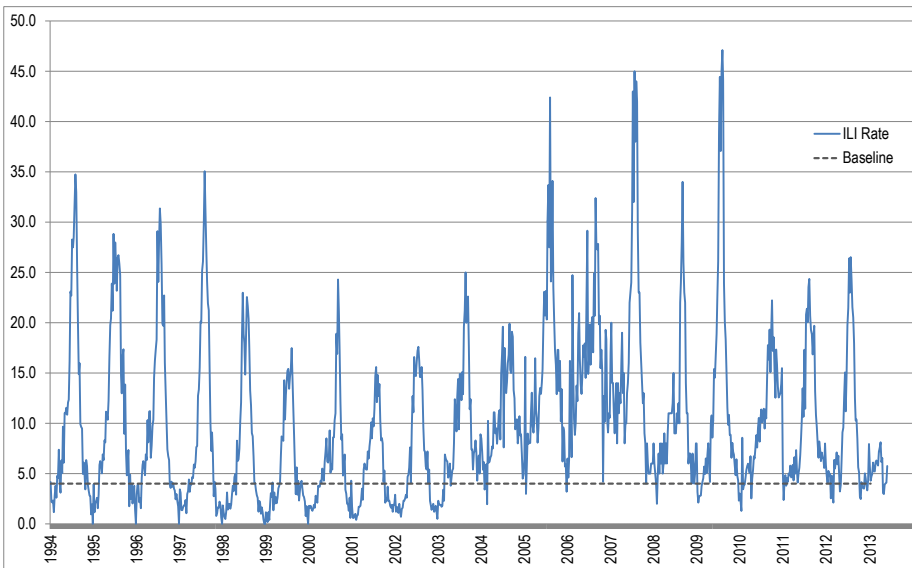


Figure 1. Rates of ILI for ASPREN + SPN(WA) + VIDRL during 1994 - 2013.

Note: From 2013, results are weighted to account for population size differences between jurisdictions, using population estimates from the 2011 Australian Census.

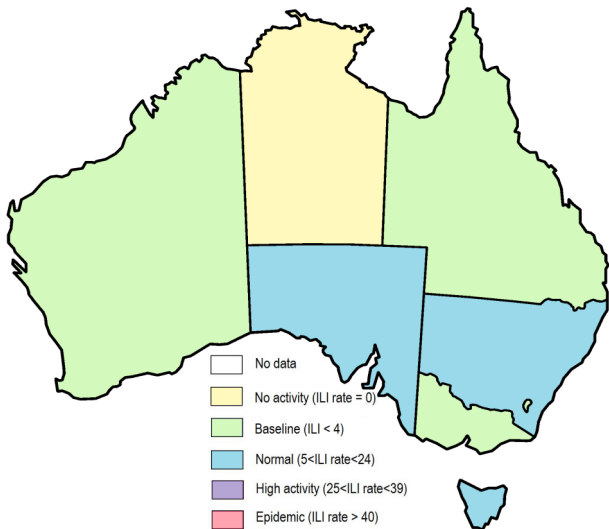


Figure 2. Map of ILI activity by jurisdiction, during weeks 21—22, 2013.

**INFLUENZA-LIKE-ILLNESS (ILI)**

Nationally, ILI notifications remained steady over the period with 82 and 91 notifications in week 21 and 22 respectively. ILI rates reported in this period increased with 4 and 6 cases per 1000 consultations in weeks 21 and 22 respectively, compared to 4 cases per 1000 in weeks 19 and 20. For the same reporting period in 2012, ILI rates were higher at 8 cases per 1000 consultations (see Figure 1). On a state-by-state basis, it is important to note the increased ILI rate in urban NSW (see figure 3).

**GASTROENTERITIS**

Nationally, gastro notifications increased significantly over the period with 80 and 62 notifications in weeks 21 and 22 respectively. Gastroenteritis rates reported in this period have increased with 4 cases per 1000 consultations for weeks 21 and 22, compared to 2 and 3 cases per 1000 consultations, for weeks 19 and 20 respectively (see Figure 4).

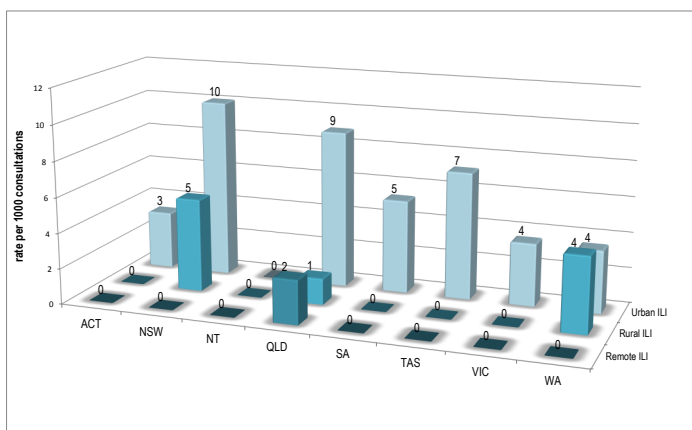


Figure 3. ASPREN + SPN(WA) rate of ILI by area and state, during weeks 21—22, 2013.

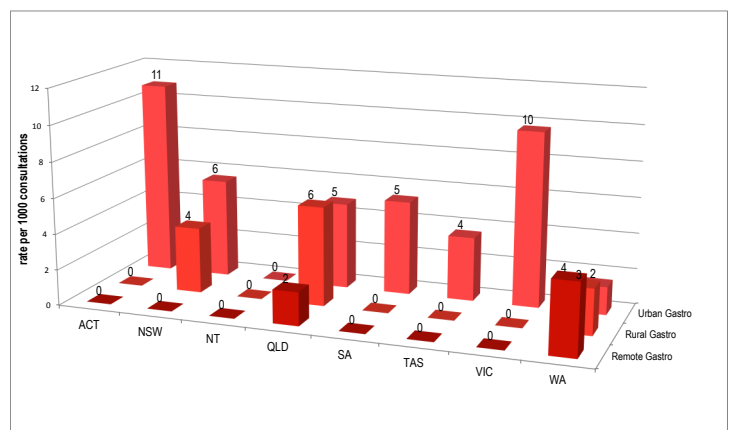


Figure 4. ASPREN + SPN(WA) rate of gastroenteritis by area & state, during weeks 21—22, 2013.

**INFLUENZA SWAB TESTING**

54% of all ILI patients were swab tested during weeks 21–22 (see Figure 5). Notably, there were 3 cases of Influenza detected during this period, 1 Flu A (H1N1) and 2 Flu B. There were also 14 cases of Rhinovirus detected making it the most common respiratory virus circulating the nation at present (see figure 7).

	Reporting Period 20 May 2013 - 2 June 2013	YTD 1 Jan 2013 - 2 June 2013
Total number of ILI notifications	173	2501
Number of swab tests performed	93	593
% ILI patients tested	54%	24%
% of swab tests positive for influenza	3%	8%

Figure 5. ASPREN + SPN(WA) swab testing results overview for 2013.

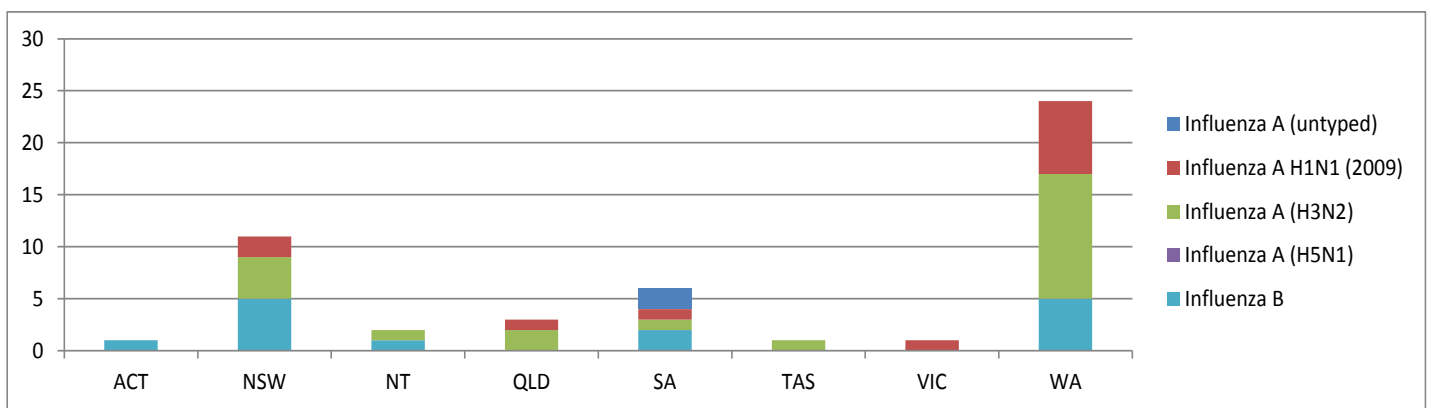


Figure 6. ASPREN + SPN(WA) + VIDRL influenza subtype analysis by jurisdiction for 2013.

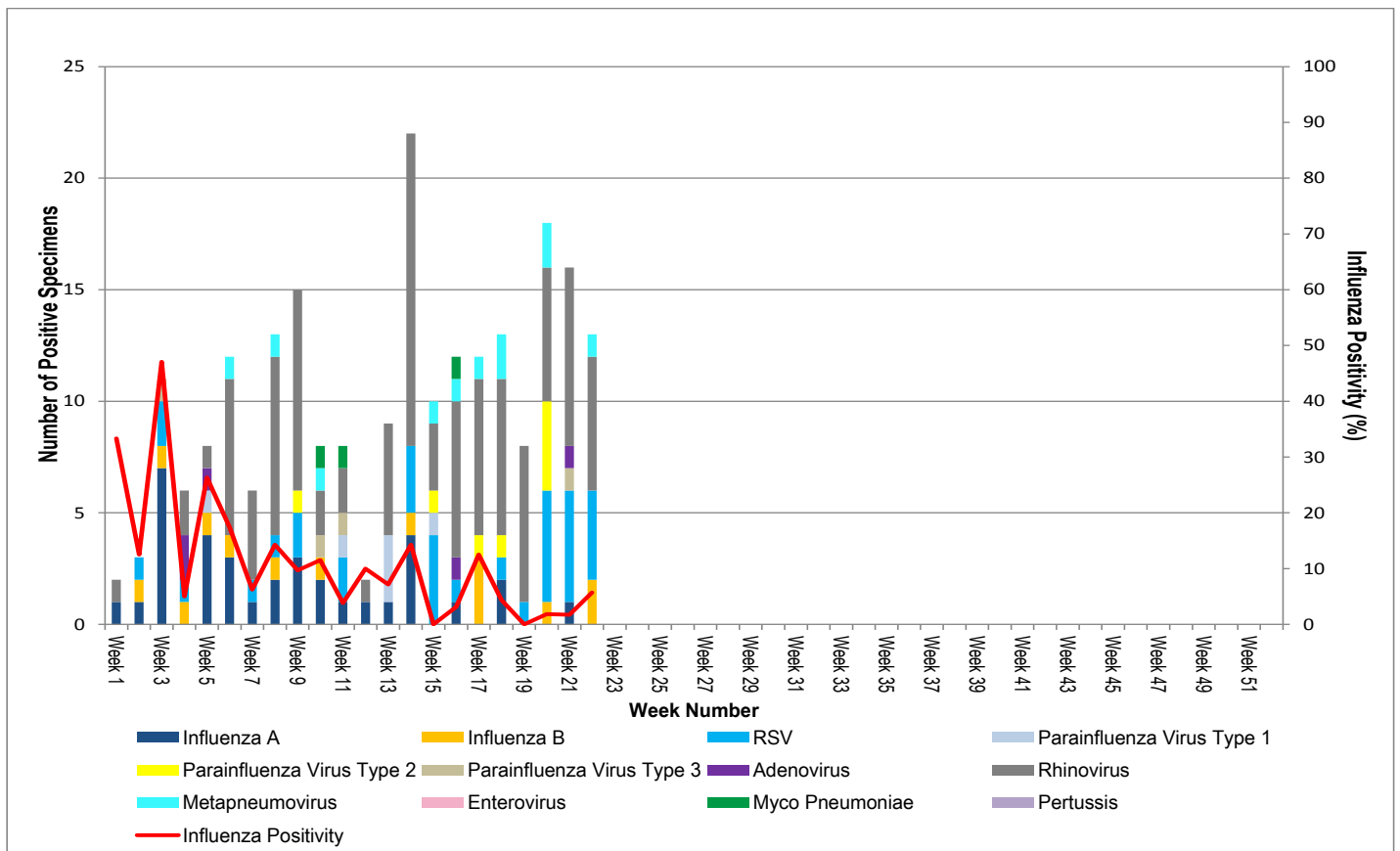


Figure 7. ASPREN + SPN(WA) + VIDRL laboratory detection of influenza and other respiratory viruses during 2013.

Please note: This report is based on data available as at 7 June 2013. Delays in the reporting of data may cause data to change retrospectively.