

NATIONAL SUMMARY



Influenza-Like-Illness levels remain low, slightly above baseline levels.

1

Cases of influenza have been detected in this reporting period:
1 x Influenza B

1%

Influenza positivity during the reporting period.

46

Cases of influenza have been detected in 2013:
34 x Influenza A (untyped)
12 x Influenza B



Gastroenteritis levels remain low, slightly above baseline levels.

SYNDROMIC SURVEILLANCE

REPORTING

Reports were received from 407 GPs from 8 states and territories during the reporting period. During weeks 19 and 20 a total of 21,394 and 18,449 consultations were made, respectively.

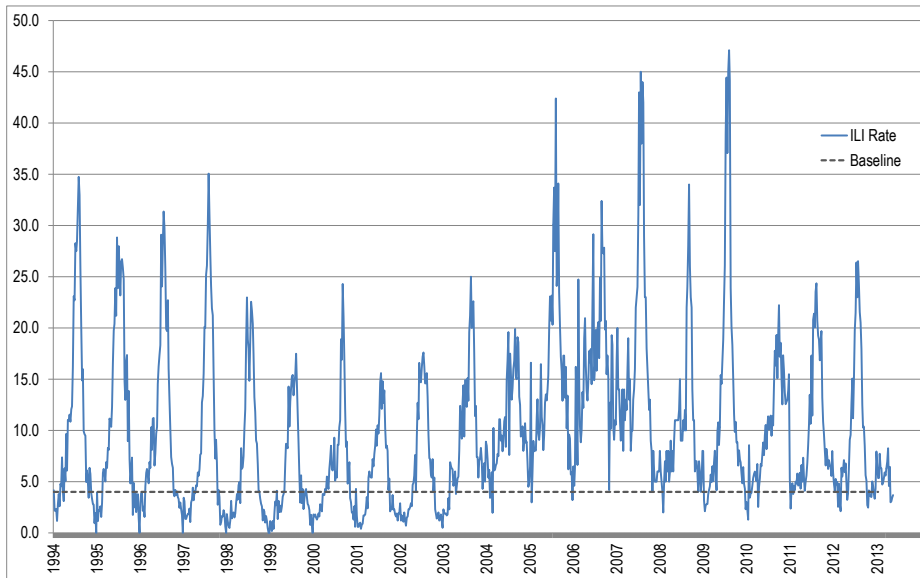


Figure 1. Rates of ILI for ASPREN + SPN(WA) + VIDRL during 1994 - 2013.

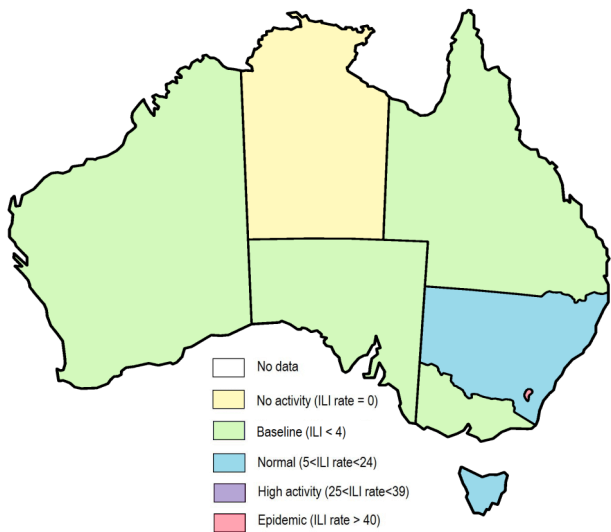


Figure 2. Map of ILI activity by jurisdiction, during weeks 19—20, 2013.

INFLUENZA-LIKE-ILLNESS (ILI)

Nationally, ILI notifications increased significantly over the period with 74 and 68 notifications in week 19 and 20 respectively. ILI rates reported in this period remained steady with 3 and 4 cases per 1000 consultations in weeks 19 and 20 respectively, compared to 3 and 4 cases per 1000 in weeks 17 and 18 respectively. For the same reporting period in 2012, ILI rates were higher at 3 and 6 cases per 1000 consultations (see Figure 1). On a state-by-state basis, it is important to note the increased ILI rate in urban ACT (see figure 3).

GASTROENTERITIS

Nationally, gastro notifications increased over the period with 51 and 55 notifications in weeks 19 and 20 respectively. Gastroenteritis rates reported in this period have remained steady with 4 and 5 cases per 1000 consultations for weeks 19 and 20 respectively, compared to 4 and 5 cases per 1000 consultations, for weeks 17 and 18 respectively (see Figure 4).

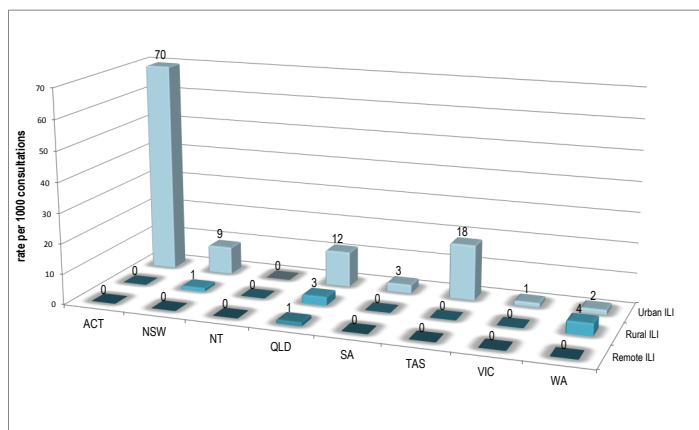


Figure 3. ASPREN + SPN(WA) rate of ILI by area and state, during weeks 19—20, 2013.

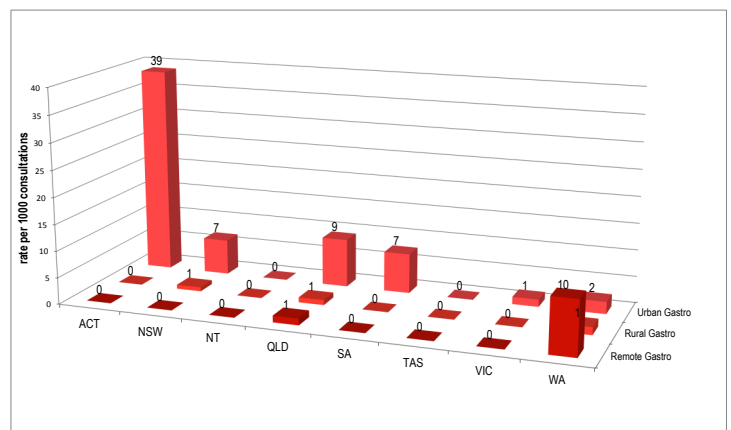


Figure 4. ASPREN + SPN(WA) rate of gastroenteritis by area & state, during weeks 19—20, 2013.

INFLUENZA SWAB TESTING

65% of all ILI patients were swab tested during weeks 19–20 (see Figure 5). Notably, there was 1 case of Influenza detected during this period, 1 Flu B. There were also 10 cases of Rhinovirus detected making it the most common respiratory virus circulating the nation at present (see figure 7).

	Reporting Period 6 May 2013 - 19 May 2013	YTD 1 Jan 2013 - 19 May 2013
Total number of ILI notifications	142	1280
Number of swab tests performed	92	493
% ILI patients tested	65%	39%
% of swab tests positive for influenza	1%	9%

Figure 5. ASPREN + SPN(WA) swab testing results overview for 2013.

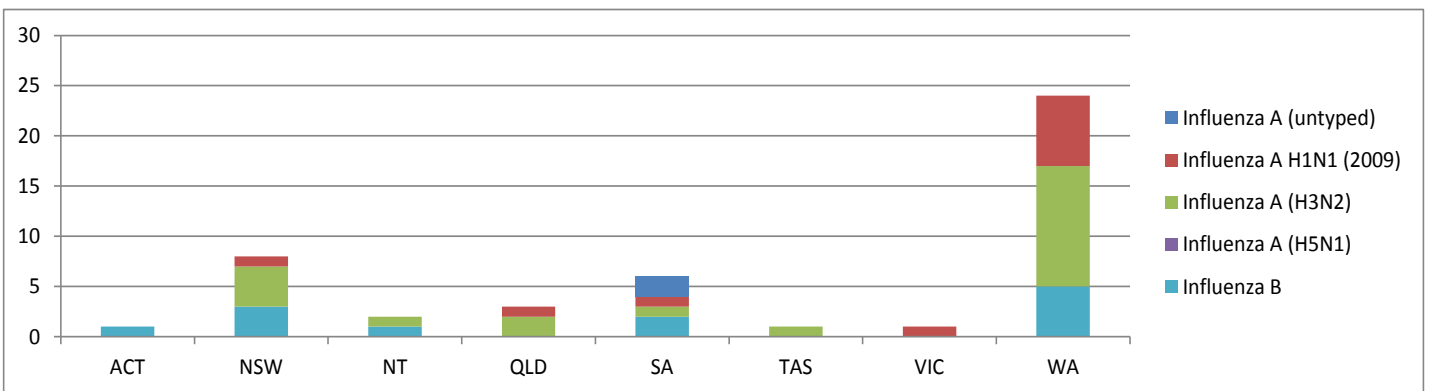


Figure 6. ASPREN + SPN(WA) + VIDRL influenza subtype analysis by jurisdiction for 2013.

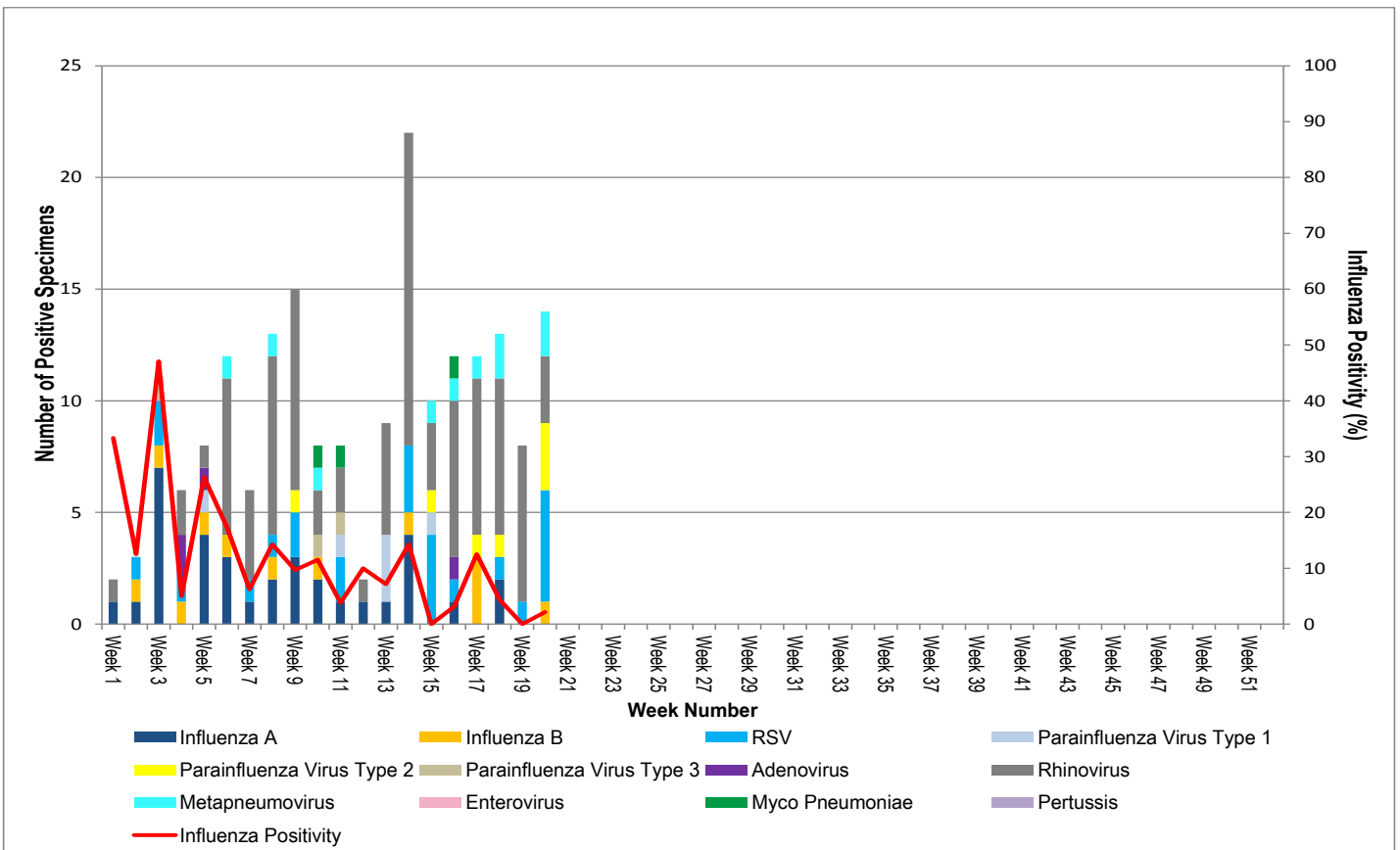


Figure 7. ASPREN + SPN(WA) + VIDRL laboratory detection of influenza and other respiratory viruses during 2013.

Please note: This report is based on data available as at 24 May 2013. Delays in the reporting of data may cause data to change retrospectively.