

NATIONAL SUMMARY



Influenza-Like-Illness levels remain low, slightly above baseline levels.

1

Cases of influenza have been detected in this reporting period:
1 x Influenza A (untyped)

8%

Influenza positivity during the reporting period.

40

Cases of influenza have been detected in 2013:
32 x Influenza A (untyped)
8 x Influenza B



Gastroenteritis levels remain low, slightly above baseline levels.

SYNDROMIC SURVEILLANCE

REPORTING

Reports were received from 211 GPs from 8 states and territories during the reporting period. During weeks 15 and 16 a total of 17,283 and 15,056 consultations were made, respectively.

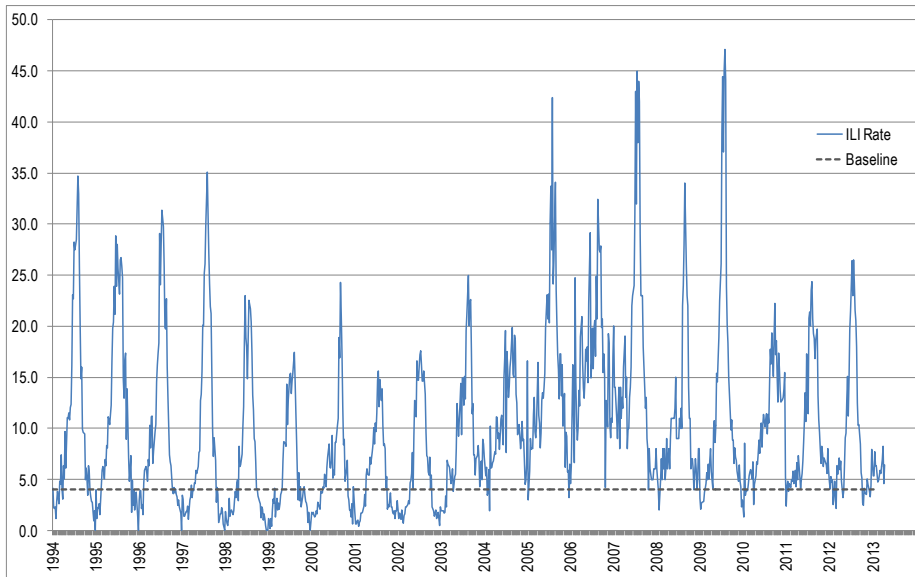


Figure 1. Rates of ILI for ASPREN + SPN(WA) + VIDRL during 1994 - 2013.

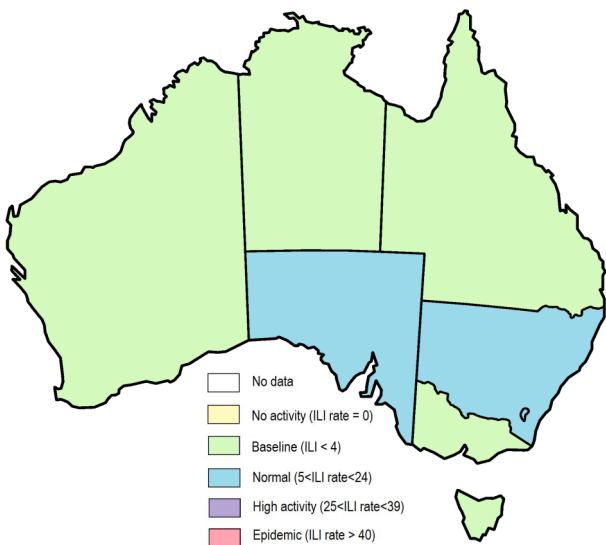


Figure 2. Map of ILI activity by jurisdiction, during weeks 15—16, 2013.

INFLUENZA-LIKE-ILLNESS (ILI)

Nationally, ILI notifications increased slightly over the period with 79 and 97 notifications in week 15 and 16 respectively. ILI rates reported in this period decreased slightly with 5 and 6 cases per 1000 consultations in weeks 15 and 16 respectively, compared to 7 and 8 cases per 1000 in weeks 13 and 14 respectively. For the same reporting period in 2012, ILI rates were much higher at 9 and 14 cases per 1000 consultations (see Figure 1). On a state-by-state basis, it is important to note the sustained high ILI rate in urban NSW (see figure 3).

GASTROENTERITIS

Nationally, gastro notifications increased over the period with 84 and 93 notifications in weeks 15 and 16 respectively. Gastroenteritis rates reported in this period have remained steady with 5 and 6 cases per 1000 consultations for weeks 15 and 16 respectively, compared to 6 cases per 1000 consultations, for weeks 13 and 14 (see Figure 4).

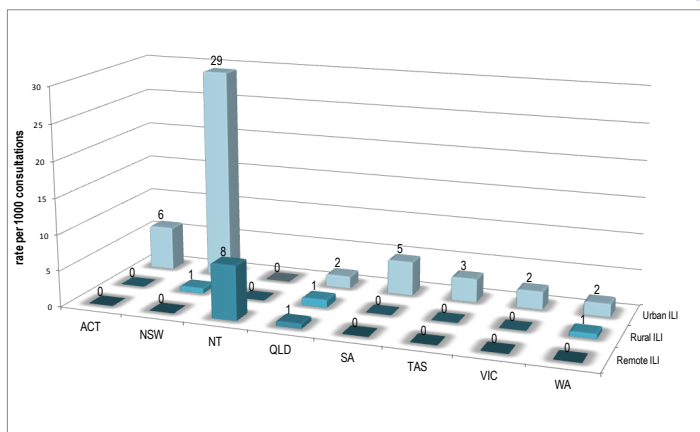


Figure 3. ASPREN + SPN(WA) rate of ILI by area and state, during weeks 15—16, 2013.

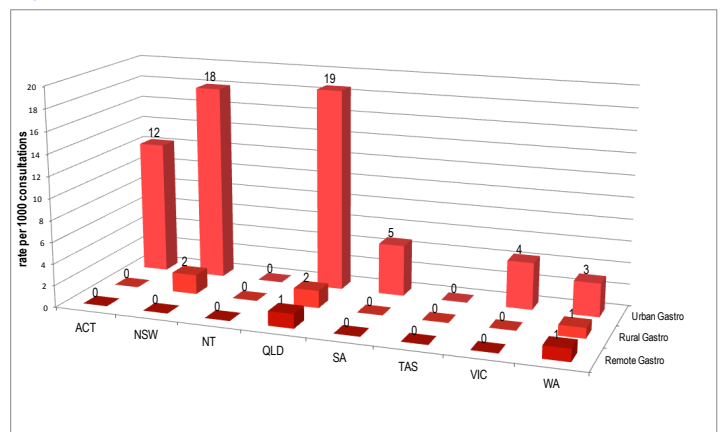


Figure 4. ASPREN + SPN(WA) rate of gastroenteritis by area & state, during weeks 15—16, 2013.

INFLUENZA SWAB TESTING

26% of all ILI patients were swab tested during weeks 15–16 (see Figure 5). Notably, there was 1 case of Influenza detected during this period, Flu A (Untyped). There were also 8 cases of Rhinovirus detected making it the most common respiratory virus circulating the nation at present (see figure 7).

	Reporting Period 8 April 2013 - 21 April 2013	YTD 1 Jan 2013 - 21 April 2013
Total number of ILI notifications	176	1050
Number of swab tests performed	45	322
% ILI patients tested	26%	31%
% of swab tests positive for influenza	2%	12%

Figure 5. ASPREN + SPN(WA) swab testing results overview for 2013.

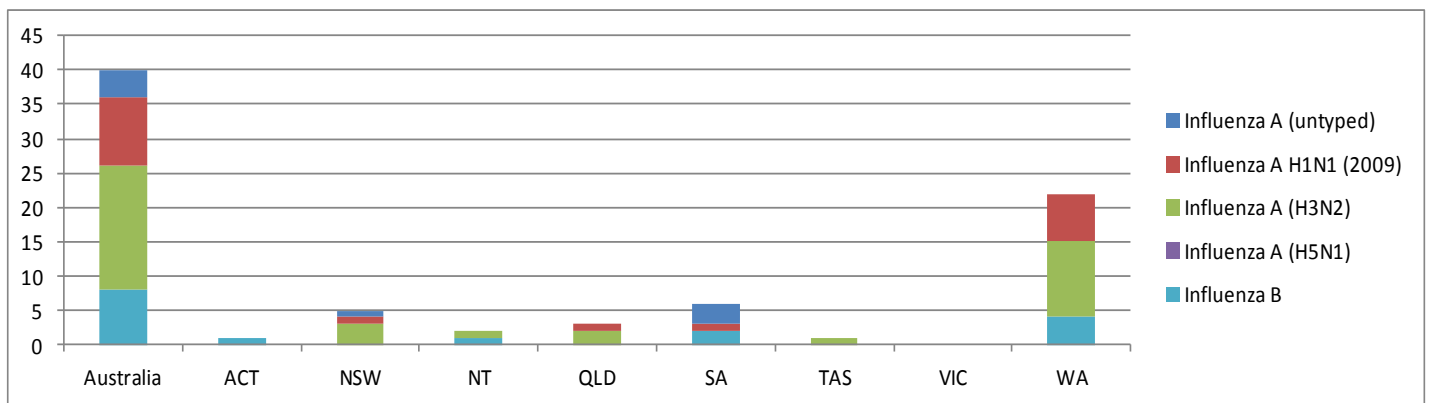


Figure 6. ASPREN + SPN(WA) + VIDRL influenza subtype analysis by jurisdiction for 2013.

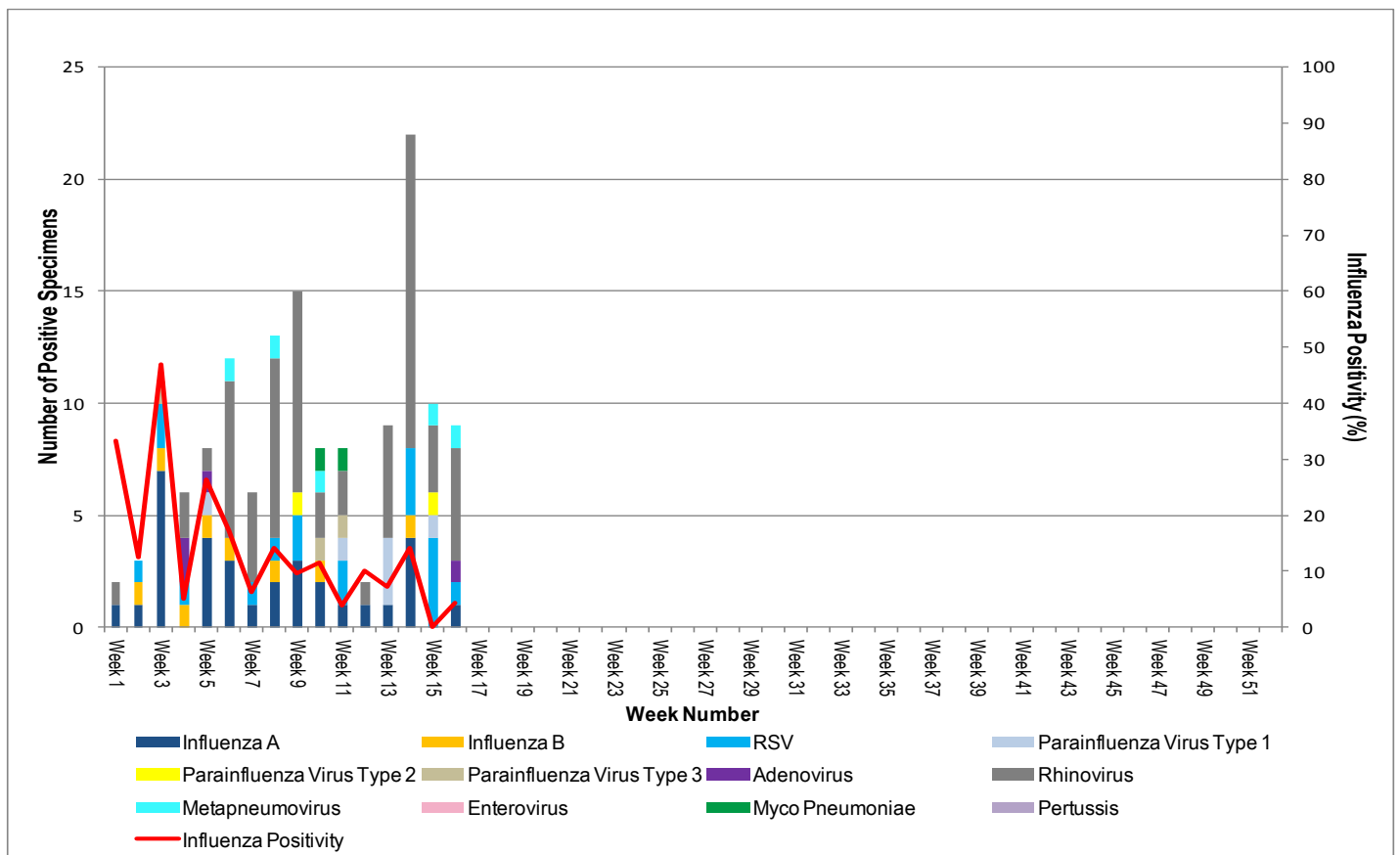


Figure 7. ASPREN + SPN(WA) + VIDRL laboratory detection of influenza and other respiratory viruses during 2013.

Please note: This report is based on data available as at 26 April 2013. Delays in the reporting of data may cause data to change retrospectively.