

NATIONAL SUMMARY



Influenza-Like-Illness levels remain low, slightly above baseline levels.

2

Cases of influenza have been detected in this reporting period:
2 x Influenza A (untyped)

8%

Influenza positivity during the reporting period.

36

Cases of influenza have been detected in 2013:
29 x Influenza A (untyped)
7 x Influenza B



Gastroenteritis levels remain low, slightly above baseline levels.

SYNDROMIC SURVEILLANCE

REPORTING

Reports were received from 186 GPs from 8 states and territories during the reporting period. During weeks 13 and 14 a total of 10,918 and 10,286 consultations were made, respectively.

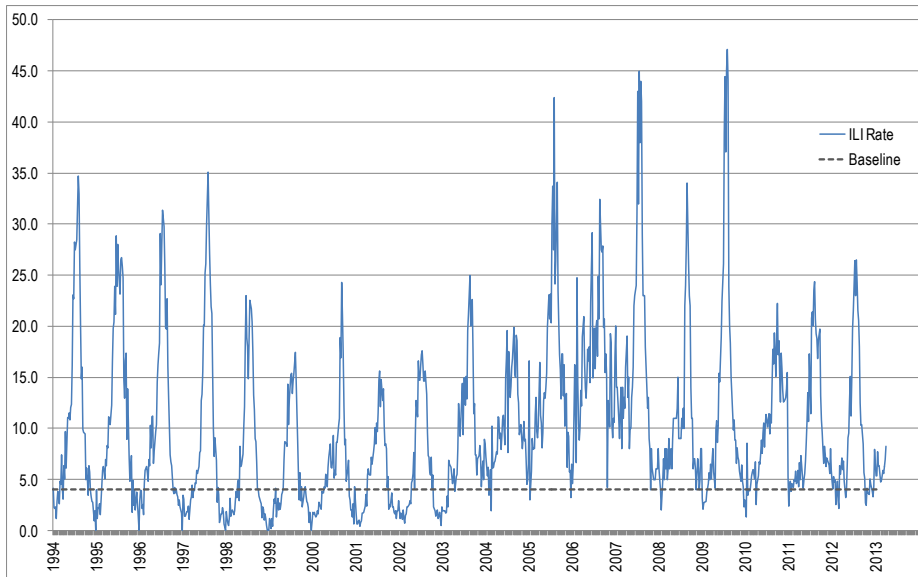


Figure 1. Rates of ILI for ASPREN + SPN(WA) + VIDRL during 1994 - 2013.

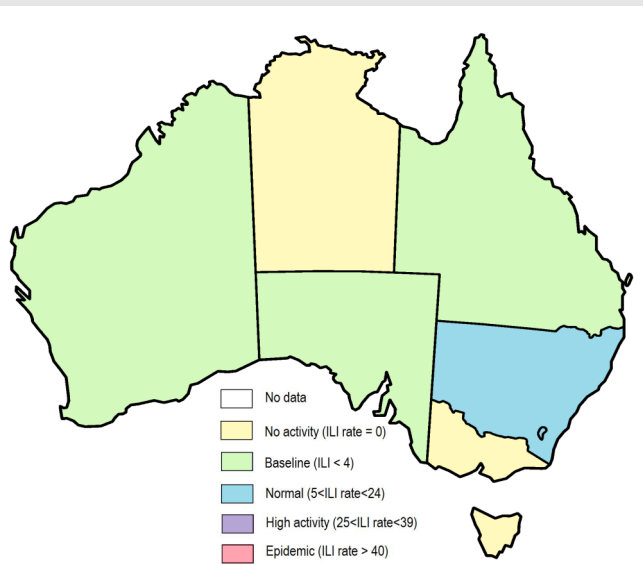


Figure 2. Map of ILI activity by jurisdiction, during weeks 13—14, 2013.

INFLUENZA-LIKE-ILLNESS (ILI)

Nationally, ILI notifications remained steady over the period with 76 and 85 notifications in week 13 and 14 respectively. ILI rates reported in this period decreased slightly with 7 and 8 cases per 1000 consultations in weeks 13 and 14 respectively, compared to 6 cases per 1000 in weeks 11 and 12. For the same reporting period in 2012, ILI rates were higher at 8 and 9 cases per 1000 consultations (see Figure 1). On a state-by-state basis, it is important to note the sustained high ILI rate in urban NSW (see figure 3).

GASTROENTERITIS

Nationally, gastro notifications remained steady over the period with 77 and 53 notifications in weeks 11 and 12 respectively. Gastroenteritis rates reported in this period have remained steady with 6 cases per 1000 consultations for weeks 13 and 14 respectively, compared to 6 and 5 cases per 1000 consultations, for weeks 11 and 12 (see Figure 4).

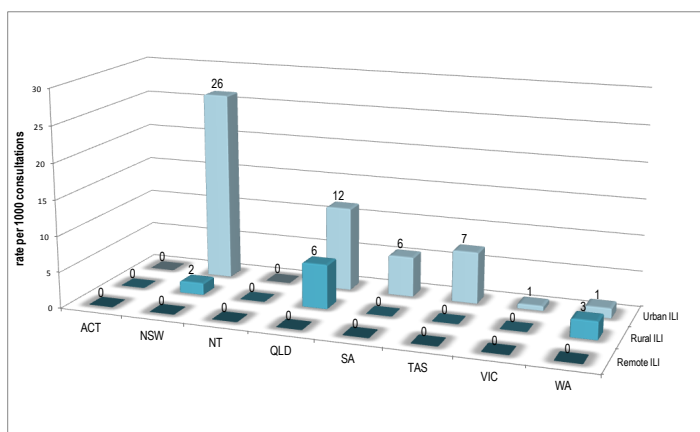


Figure 3. ASPREN + SPN(WA) rate of ILI by area and state, during weeks 13—14, 2013.

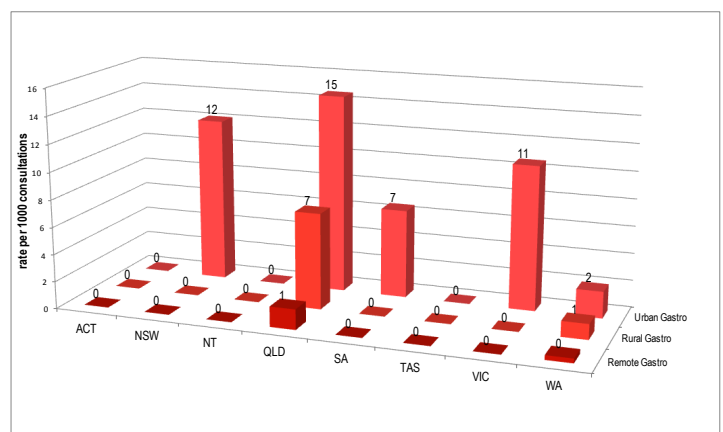


Figure 4. ASPREN + SPN(WA) rate of gastroenteritis by area & state, during weeks 13—14, 2013.

INFLUENZA SWAB TESTING

23% of all ILI patients were swab tested during weeks 13–14 (see Figure 5). Notably, there were 2 cases of Influenza detected during this period, all Flu A (H3N2). There were also 11 cases of Rhinovirus detected making it the most common respiratory virus circulating the nation at present (see figure 7).

	Reporting Period 25 March 2013 - 7 April 2013	YTD 1 Jan 2013 - 7 April 2013
Total number of ILI notifications	161	874
Number of swab tests performed	37	265
% ILI patients tested	23%	30%
% of swab tests positive for influenza	8%	14%

Figure 5. ASPREN + SPN(WA) swab testing results overview for 2013.

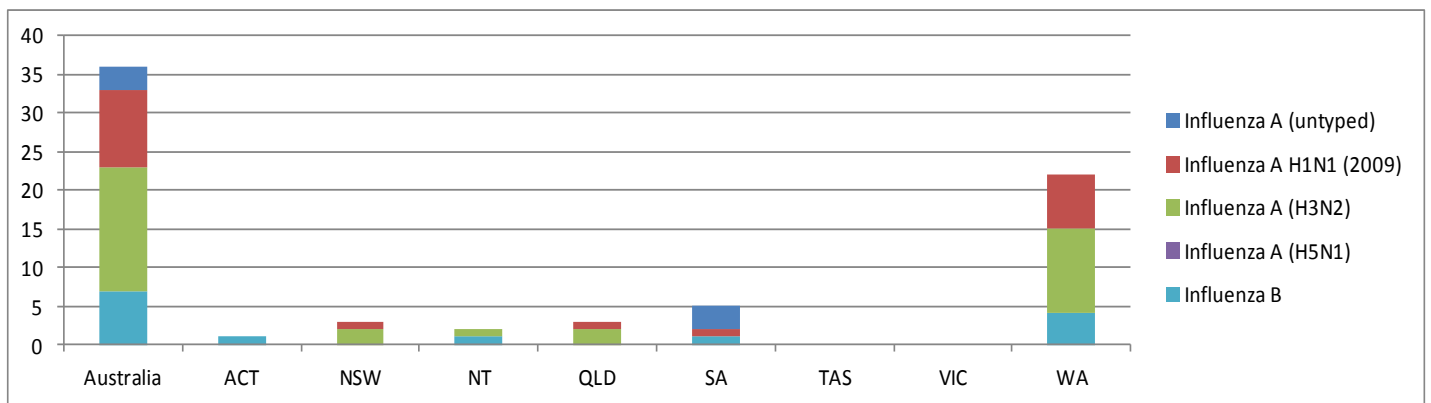


Figure 6. ASPREN + SPN(WA) + VIDRL influenza subtype analysis by jurisdiction for 2013.

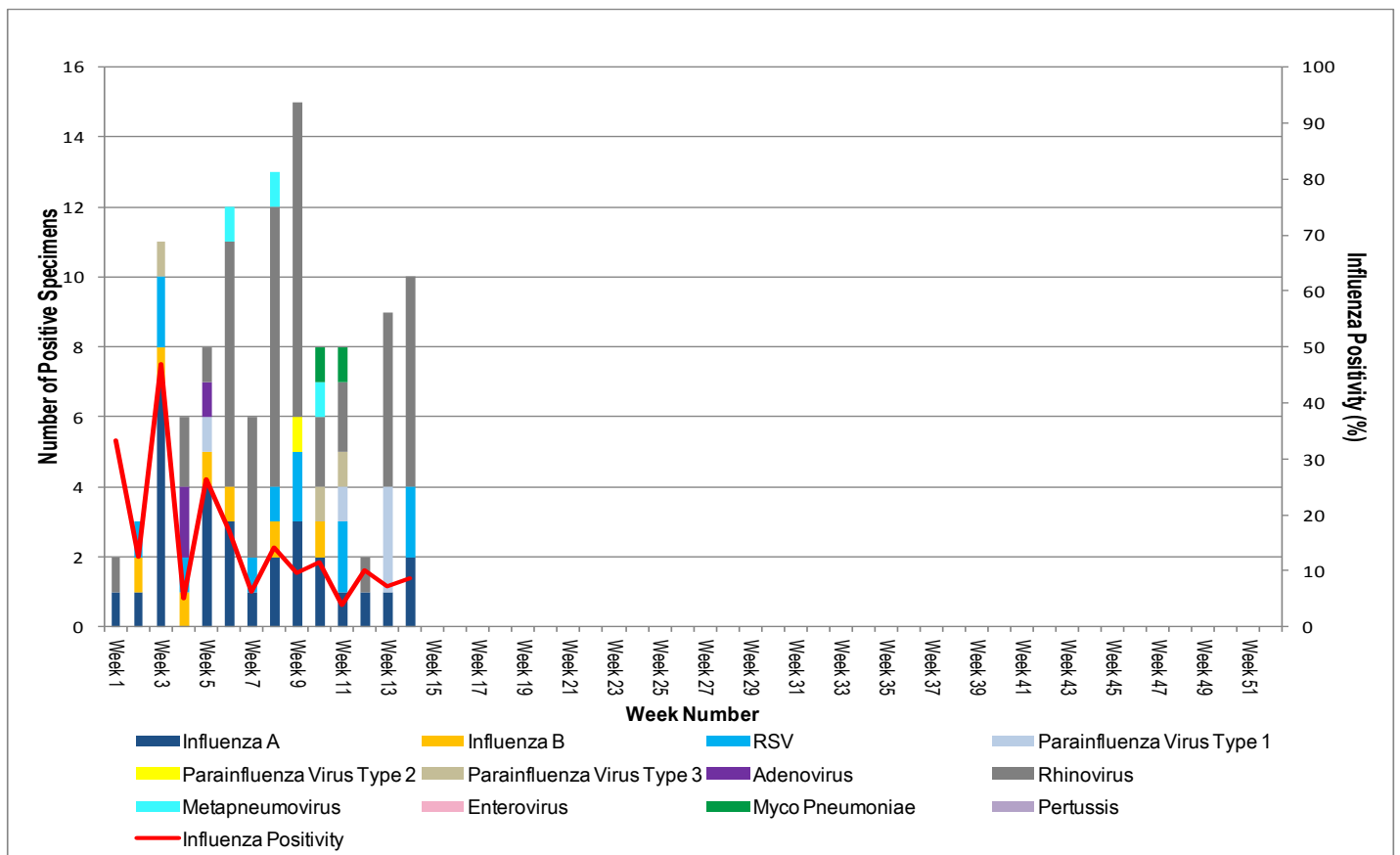


Figure 7. ASPREN + SPN(WA) + VIDRL laboratory detection of influenza and other respiratory viruses during 2013.

Please note: This report is based on data available as at 12 April 2013. Delays in the reporting of data may cause data to change retrospectively.