

**NATIONAL SUMMARY**



Influenza-Like-Illness levels remain low, slightly above baseline levels.

**2**

Cases of influenza have been detected in this reporting period:  
2 x Influenza A (untyped)

**11%**

Influenza positivity during the reporting period.

**33**

Cases of influenza have been detected in 2013:  
26 x Influenza A (untyped)  
7 x Influenza B



Gastroenteritis levels remain low, slightly above baseline levels.

**SYNDROMIC SURVEILLANCE**

**REPORTING**

Reports were received from 179 GPs from 8 states and territories during the reporting period. During weeks 11 and 12 a total of 13,388 and 11,295 consultations were made, respectively.

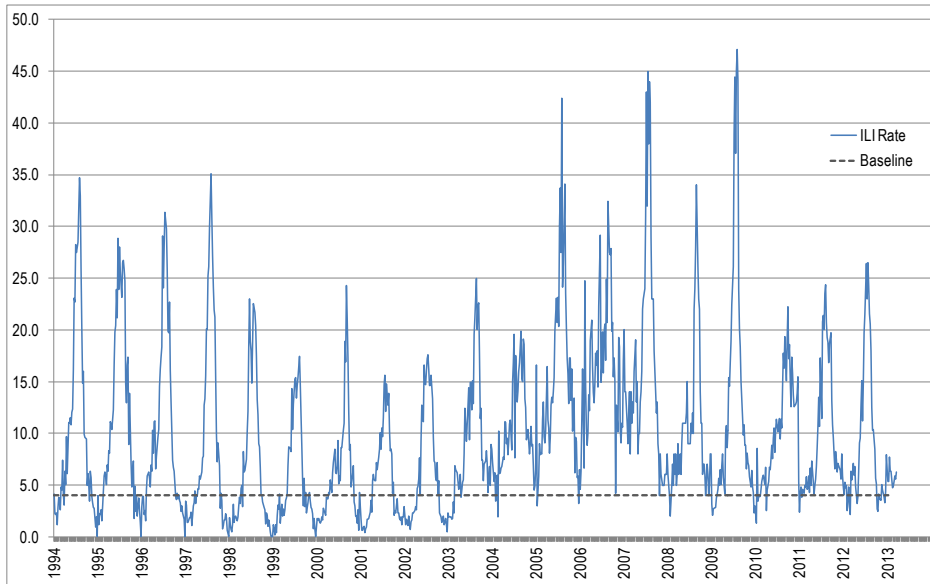


Figure 1. Rates of ILI for ASPREN + SPN(WA) + VIDRL during 1994 - 2013.

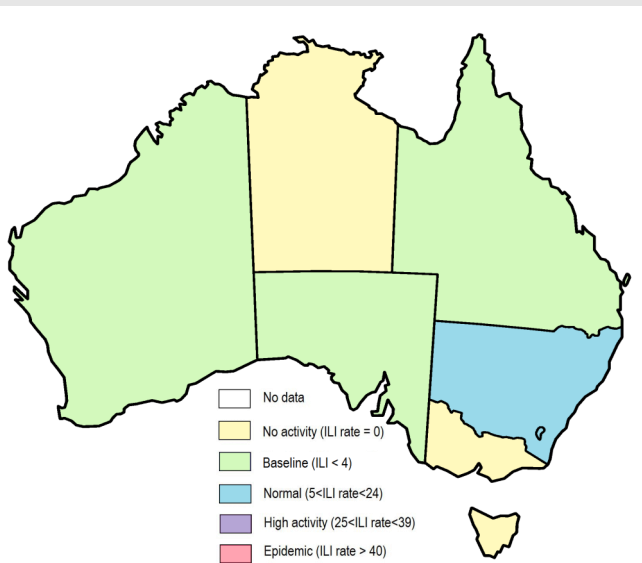


Figure 2. Map of ILI activity by jurisdiction, during weeks 11—12, 2013.

**INFLUENZA-LIKE-ILLNESS (ILI)**

Nationally, ILI notifications remained steady over the period with 75 and 71 notifications in week 11 and 12 respectively. ILI rates reported in this period remained steady with 6 cases per 1000 consultations in weeks 11 and 12, compared to 5 and 6 cases per 1000 in weeks 9 and 10 respectively. For the same reporting period in 2012, ILI rates were higher at 8 and 7 cases per 1000 consultations (see Figure 1). On a state-by-state basis, it is important to note the sustained high ILI rate in urban NSW (see figure 3).

**GASTROENTERITIS**

Nationally, gastro notifications remained steady over the period with 77 and 53 notifications in weeks 11 and 12 respectively. Gastroenteritis rates reported in this period have remained steady with 6 and 5 cases per 1000 consultations for weeks 11 and 12 respectively, compared to 5 and 6 cases per 1000 consultations, for weeks 9 and 10 (see Figure 4).

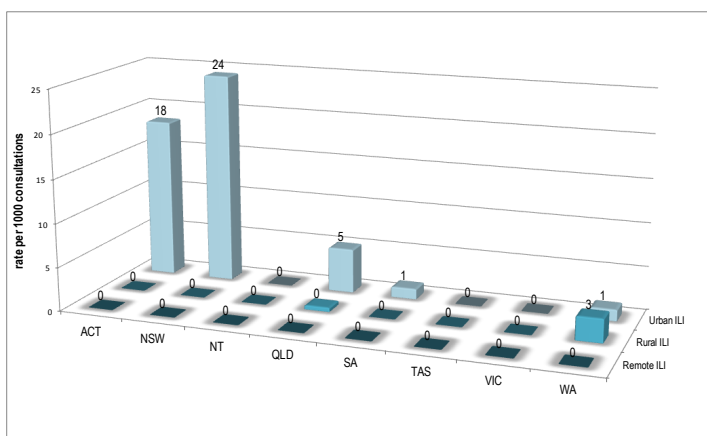


Figure 3. ASPREN + SPN(WA) rate of ILI by area and state, during weeks 11—12, 2013.

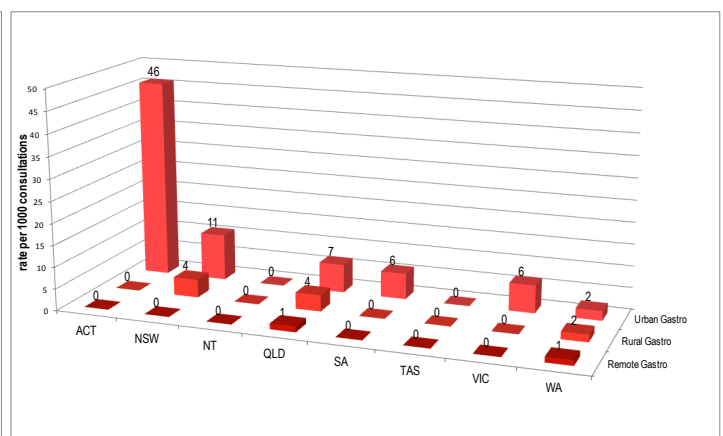


Figure 4. ASPREN + SPN(WA) rate of gastroenteritis by area & state, during weeks 11—12, 2013.

**INFLUENZA SWAB TESTING**

25% of all ILI patients were swab tested during weeks 11–12 (see Figure 5). Notably, there were 2 cases of Influenza detected during this period, all Flu A (untyped). There were also 3 cases of Rhinovirus detected making it the most common respiratory virus circulating the nation at present (see figure 7).

|  | Reporting Period<br>11 March 2013 - 24 March 2013 | YTD<br>1 Jan 2013 - 24 March 2013 |
|--|---|-----------------------------------|
| Total number of ILI notifications      | 146   | 713                               |
| Number of swab tests performed         | 36  | 228                               |
| % ILI patients tested                  | 25%   | 32%                               |
| % of swab tests positive for influenza | 6%  | 14%                               |

Figure 5. ASPREN + SPN(WA) swab testing results overview for 2013.

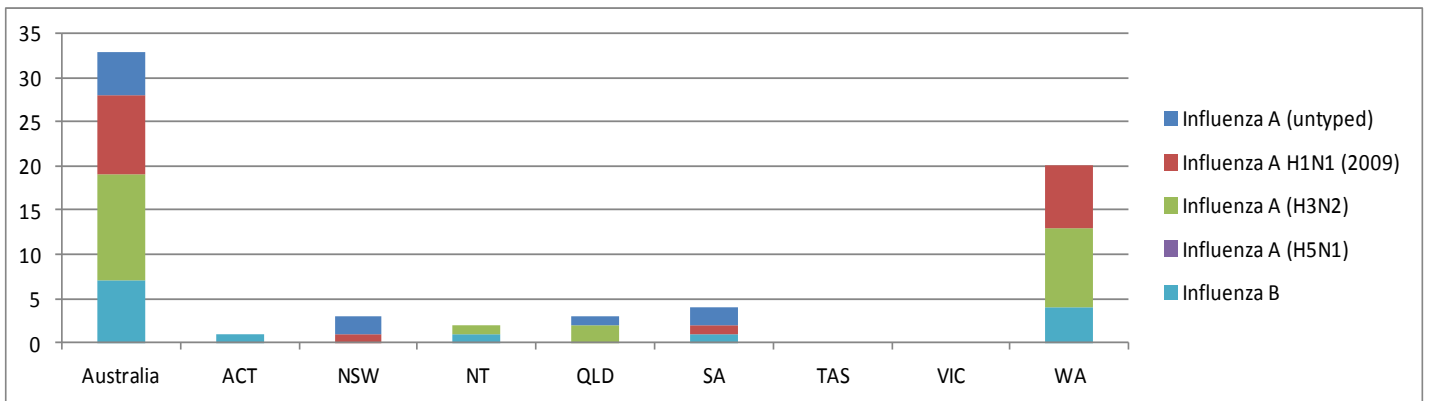


Figure 6. ASPREN + SPN(WA) + VIDRL influenza subtype analysis by jurisdiction for 2013.

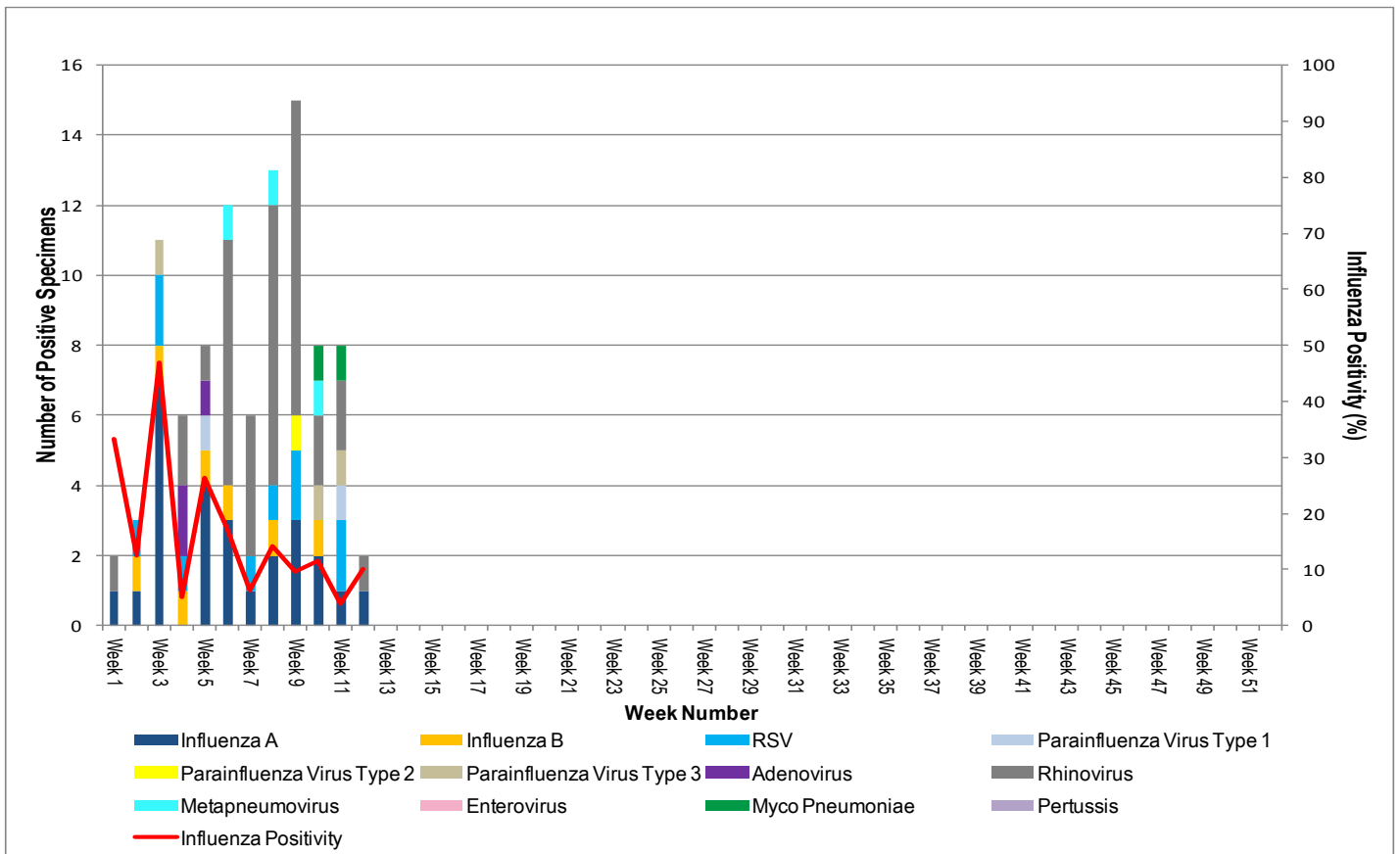


Figure 7. ASPREN + SPN(WA) + VIDRL laboratory detection of influenza and other respiratory viruses during 2013.

Please note: This report is based on data available as at 27 March 2013. Delays in the reporting of data may cause data to change retrospectively.