

NATIONAL SUMMARY



Influenza-Like-Illness levels remain low, slightly above baseline levels.

6

Cases of influenza have been detected in this reporting period:
5 x Influenza A (untyped)
1 x Influenza B

11%

Influenza positivity during the reporting period.

32

Cases of influenza have been detected in 2013:
24 x Influenza A (untyped)
8 x Influenza B



Gastroenteritis levels remain low, slightly above baseline levels.

SYNDROMIC SURVEILLANCE

REPORTING

Reports were received from 193 GPs from 8 states and territories during the reporting period. During weeks 9 and 10 a total of 14,673 and 10,504 consultations were made, respectively.

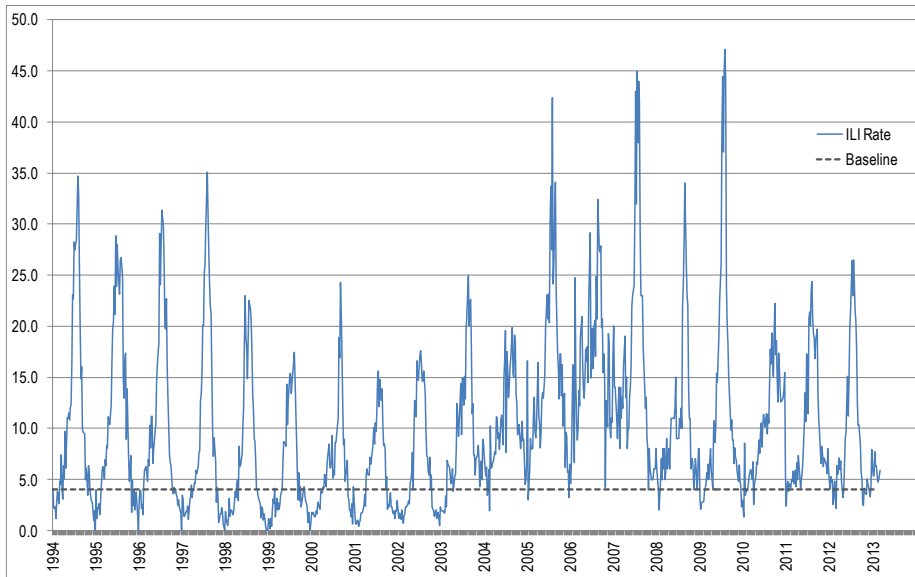


Figure 1. Rates of ILI for ASPREN + SPN(WA) + VIDRL during 1994 - 2013.

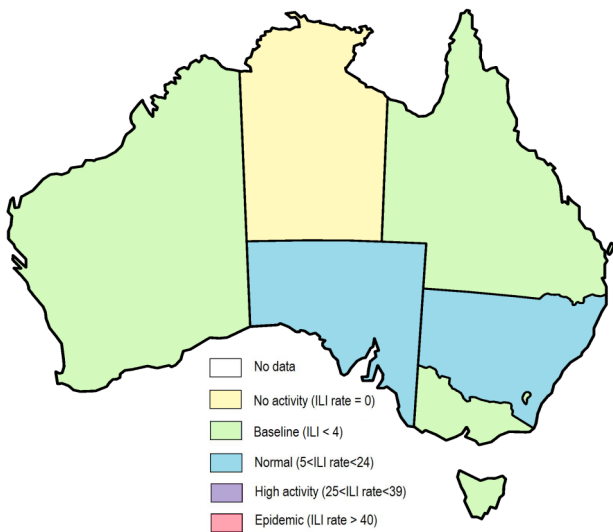


Figure 2. Map of ILI activity by jurisdiction, during weeks 9—10, 2013.

INFLUENZA-LIKE-ILLNESS (ILI)

Nationally, ILI notifications remained steady over the period with 79 and 62 notifications in week 9 and 10 respectively. ILI rates reported in this period remained steady with 5 and 6 cases per 1000 consultations in weeks 9 and 10 respectively, compared to 5 cases per 1000 in weeks 7 and 8. For the same reporting period in 2012, ILI rates were similar at 4 and 3 cases per 1000 consultations (see Figure 1). On a state-by-state basis, it is important to note the sustained high ILI rate in urban NSW (see figure 3).

GASTROENTERITIS

Nationally, gastro notifications remained steady over the period with 76 and 64 notifications in weeks 9 and 10 respectively. Gastroenteritis rates reported in this period have remained steady with 5 and 6 cases per 1000 consultations for weeks 9 and 10 respectively, compared to 6 and 5 cases per 1000 consultations, for weeks 7 and 8 (see Figure 4).

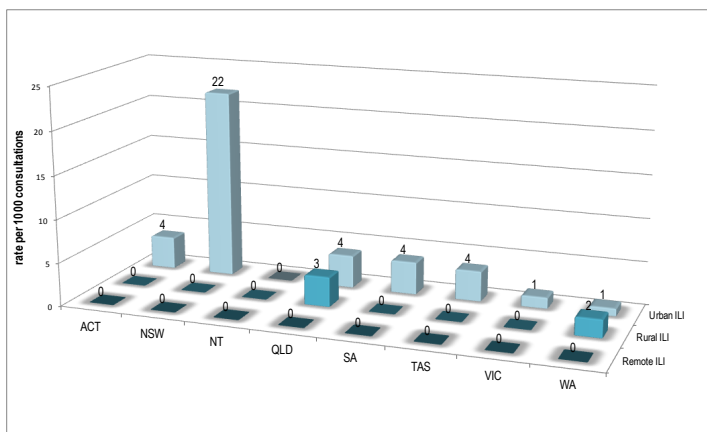


Figure 3. ASPREN + SPN(WA) rate of ILI by area and state, during weeks 9—10, 2013.

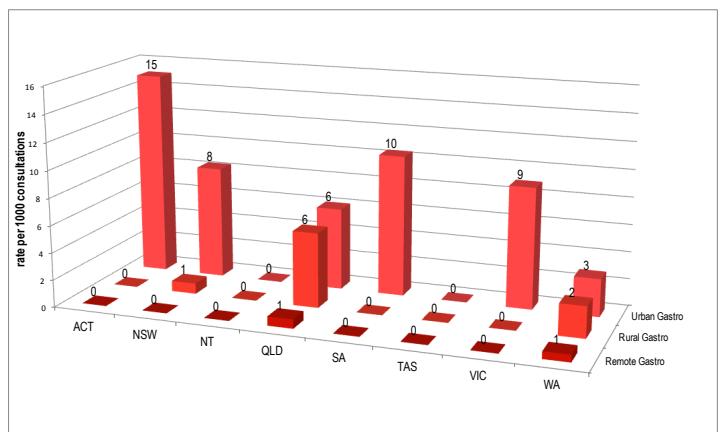


Figure 4. ASPREN + SPN(WA) rate of gastroenteritis by area & state, during weeks 9—10, 2013.

INFLUENZA SWAB TESTING

52% of all ILI patients were swab tested during weeks 9–10 (see Figure 5). Notably, there were 6 cases of Influenza detected during this period, 5 Flu A (untyped) and 1 Flu B. There were also 11 cases of Rhinovirus detected making it the most common respiratory virus circulating the nation at present (see figure 7).

	Reporting Period 25 Feb 2013 - 10 March 2013	YTD 1 Jan 2013 - 10 March 2013
Total number of ILI notifications	110	204
Number of swab tests performed	57	192
% ILI patients tested	52%	94%
% of swab tests positive for influenza	11%	17%

Figure 5. ASPREN + SPN(WA) swab testing results overview for 2013.

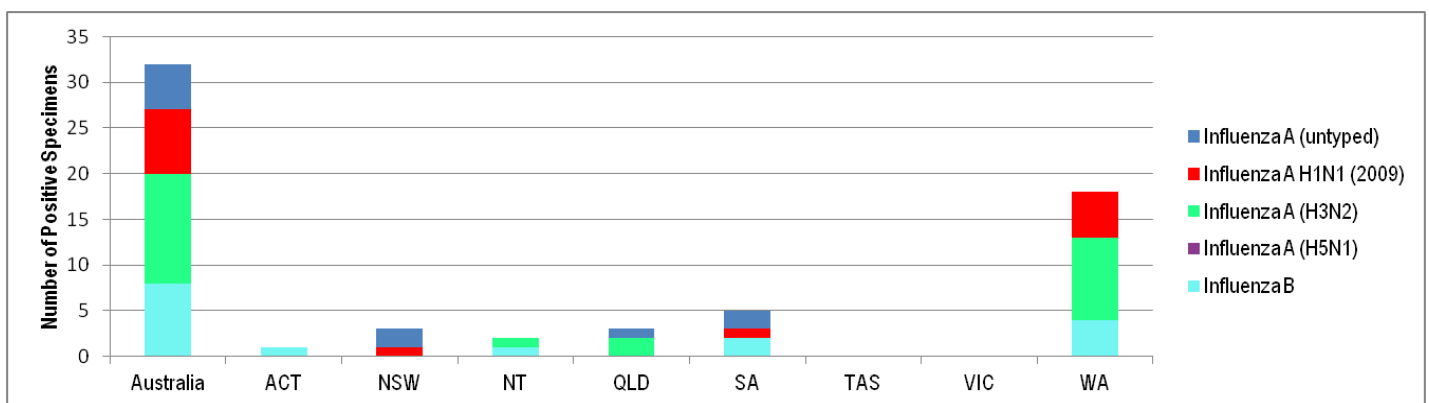


Figure 6. ASPREN + SPN(WA) + VIDRL influenza subtype analysis by jurisdiction for 2013.

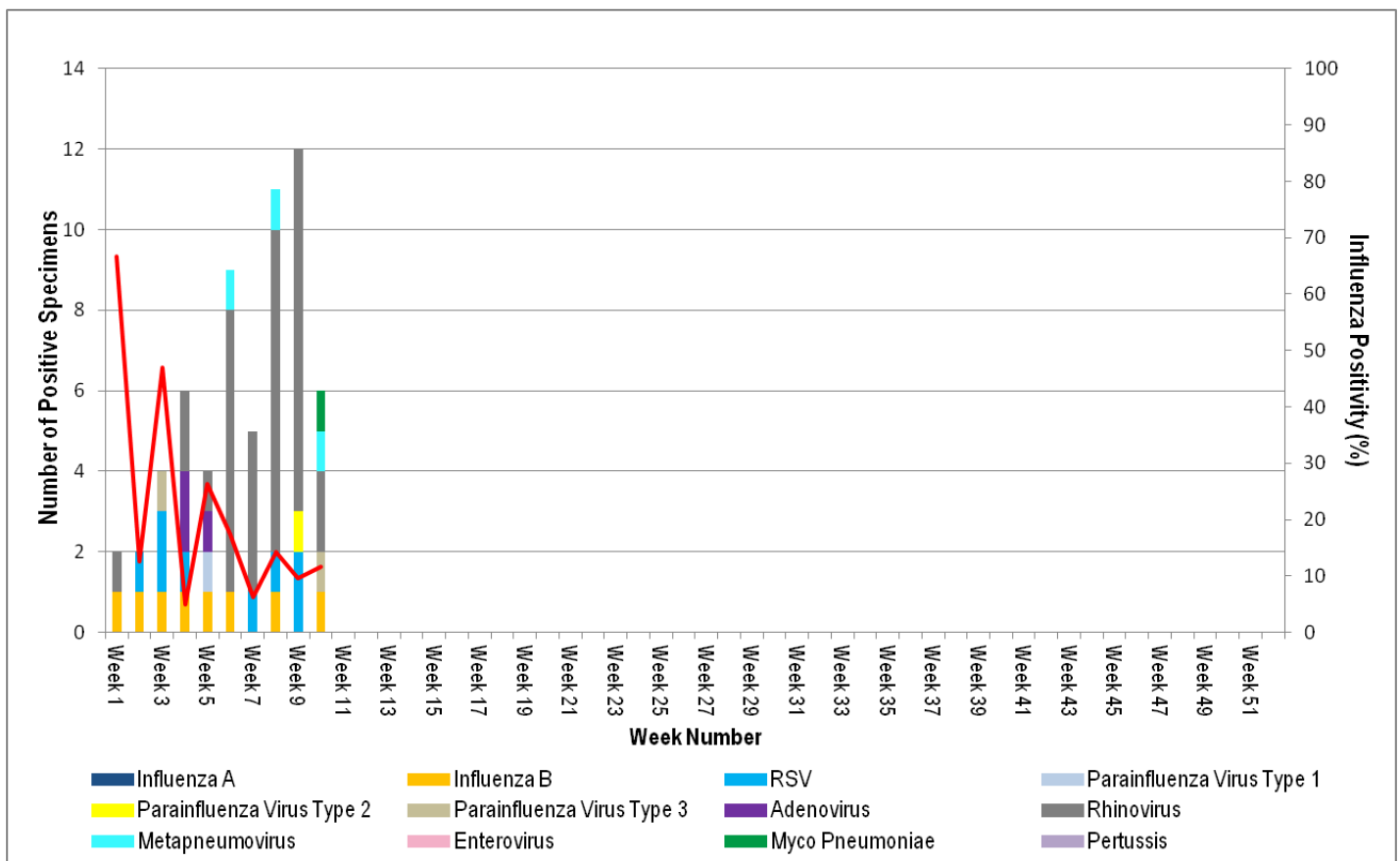


Figure 7. ASPREN + SPN(WA) + VIDRL laboratory detection of influenza and other respiratory viruses during 2013.

Please note: This report is based on data available as at 19 March 2013. Delays in the reporting of data may cause data to change retrospectively.