

**NATIONAL PRIMARY CARE INFECTIOUS DISEASES  
SENTINEL SURVEILLANCE FORTNIGHTLY REPORT**

From The Australian Sentinel Practices Research Network (ASPEN) \*

No. 09, 2023 - 24th April — 7th May 2023

**NATIONAL SUMMARY**



Influenza-like-illness levels are increasing

**2**

Case of influenza have been detected in this reporting period  
0 x Influenza A  
2 x Influenza B

**8%**

Influenza positivity during the reporting period.

**28**

Cases of influenza have been detected this year:  
17 x Influenza A  
11 x Influenza B



Gastroenteritis levels are decreasing

**SYNDROMIC SURVEILLANCE  
REPORTING**

Reports were received from 193 reporters from 8 states and territories during the reporting period. During weeks 17 and 18 reporters saw a total of 30,429 patients.

**INFLUENZA-LIKE-ILLNESS (ILI)**

Nationally, ILI notifications increased during the period with 95 notifications being reported in weeks 17–18. ILI rates reported in this period were 3 and 4 cases per 1000 consultations (weighted). This was similar to the previous fortnight where rates were 4 and 3 cases per 1000 consultations in weeks 15 and 16 respectively. For the same reporting period in 2022, ILI rates were lower at 3 and 4 cases per 1000 consultations for weeks 17 and 18 (see Fig. 5).

**GASTROENTERITIS**

Nationally, gastroenteritis notifications remained steady at 43 notifications reported. Gastroenteritis rates reported in this period slightly decreased to 1 case per 1000 consultations in weeks 17 and 18, compared to 2 and 1 cases per 1000 consultations in weeks 15 and 16 respectively (see Fig. 5).

\* ASPEN is funded by the Commonwealth's Department of Health, Office of Health Protection, Vaccine Preventable Disease Surveillance Section.

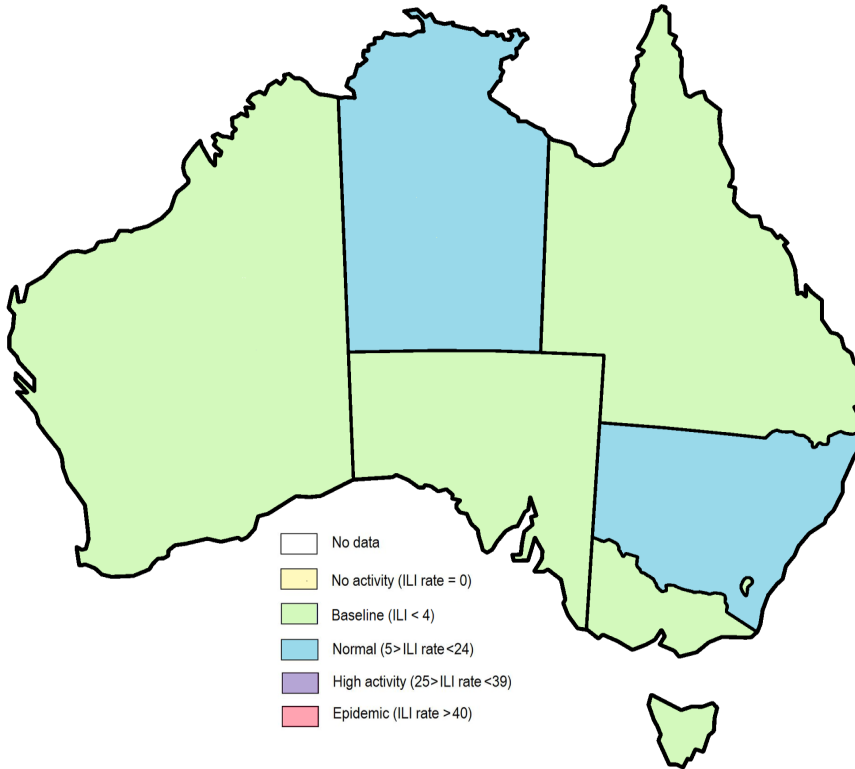


Figure 1. Map of ILI activity by jurisdiction, weeks 17 - 18, 2023.

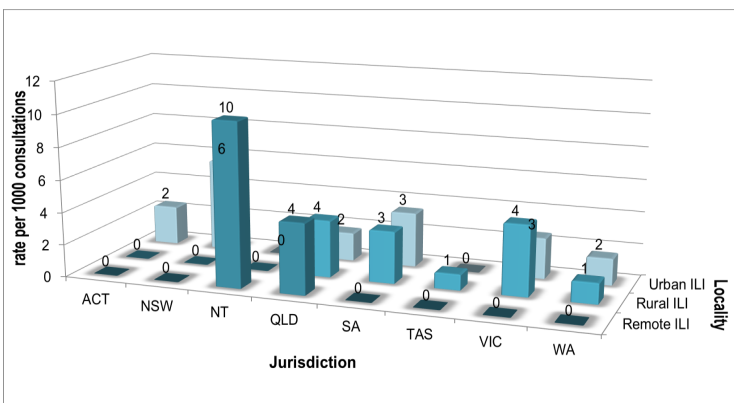


Figure 2. ASPREN rate of ILI by locality and jurisdiction, weeks 17 - 18, 2023.

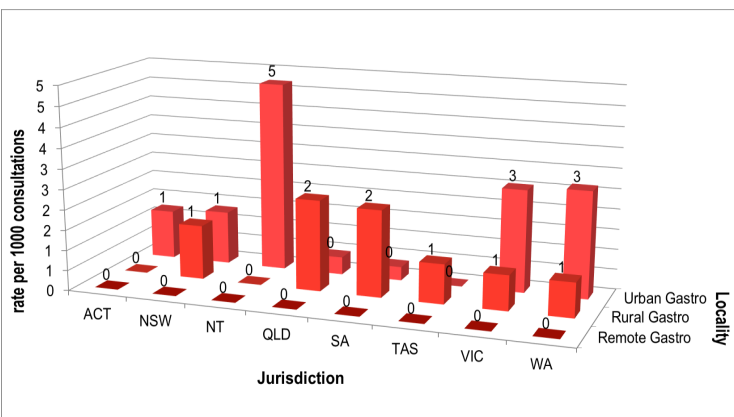


Figure 3. ASPREN rate of gastroenteritis by locality and jurisdiction, weeks 17 - 18, 2023.

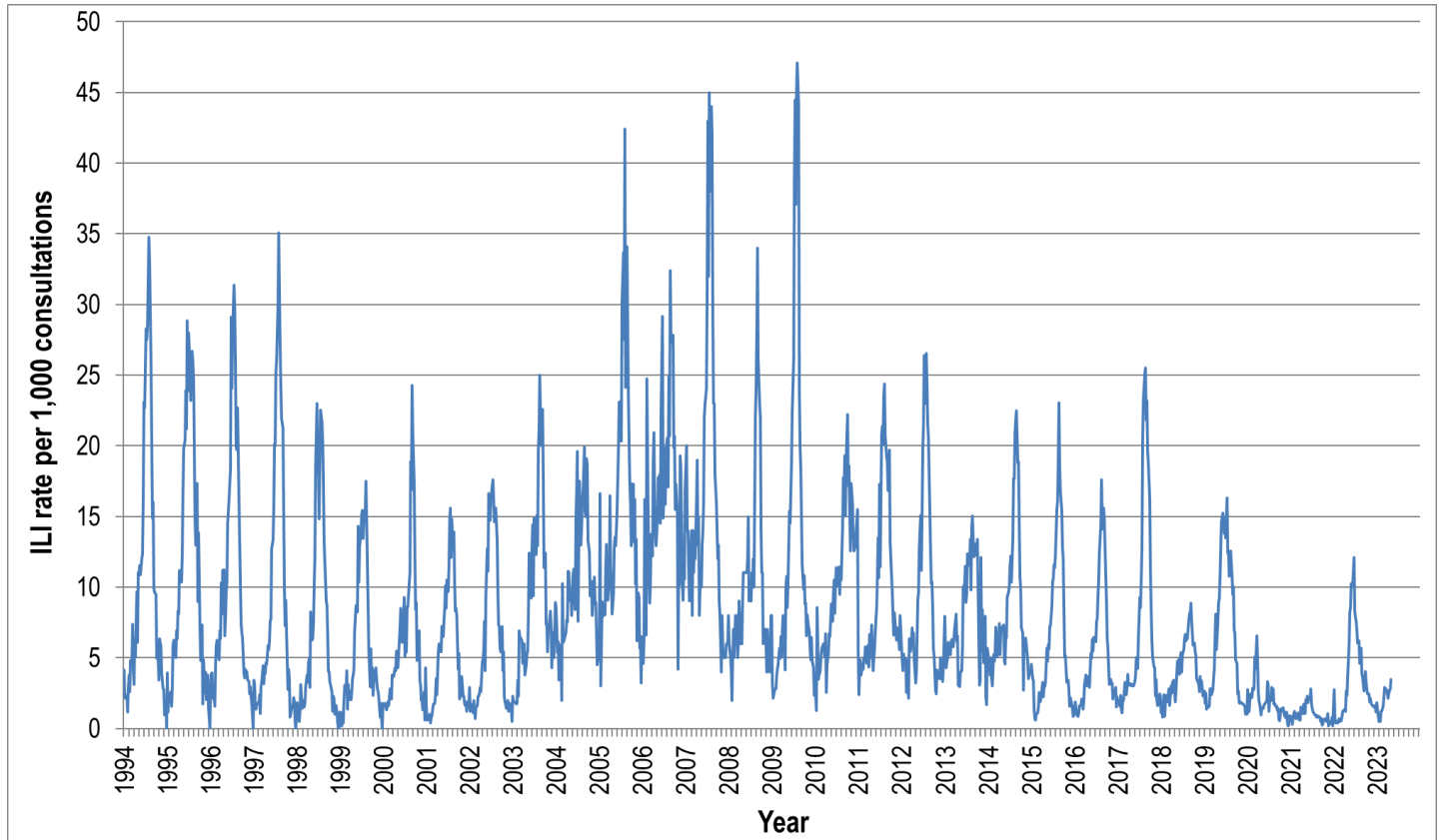


Figure 4. ASPREN ILI rates 1994 - 2023.

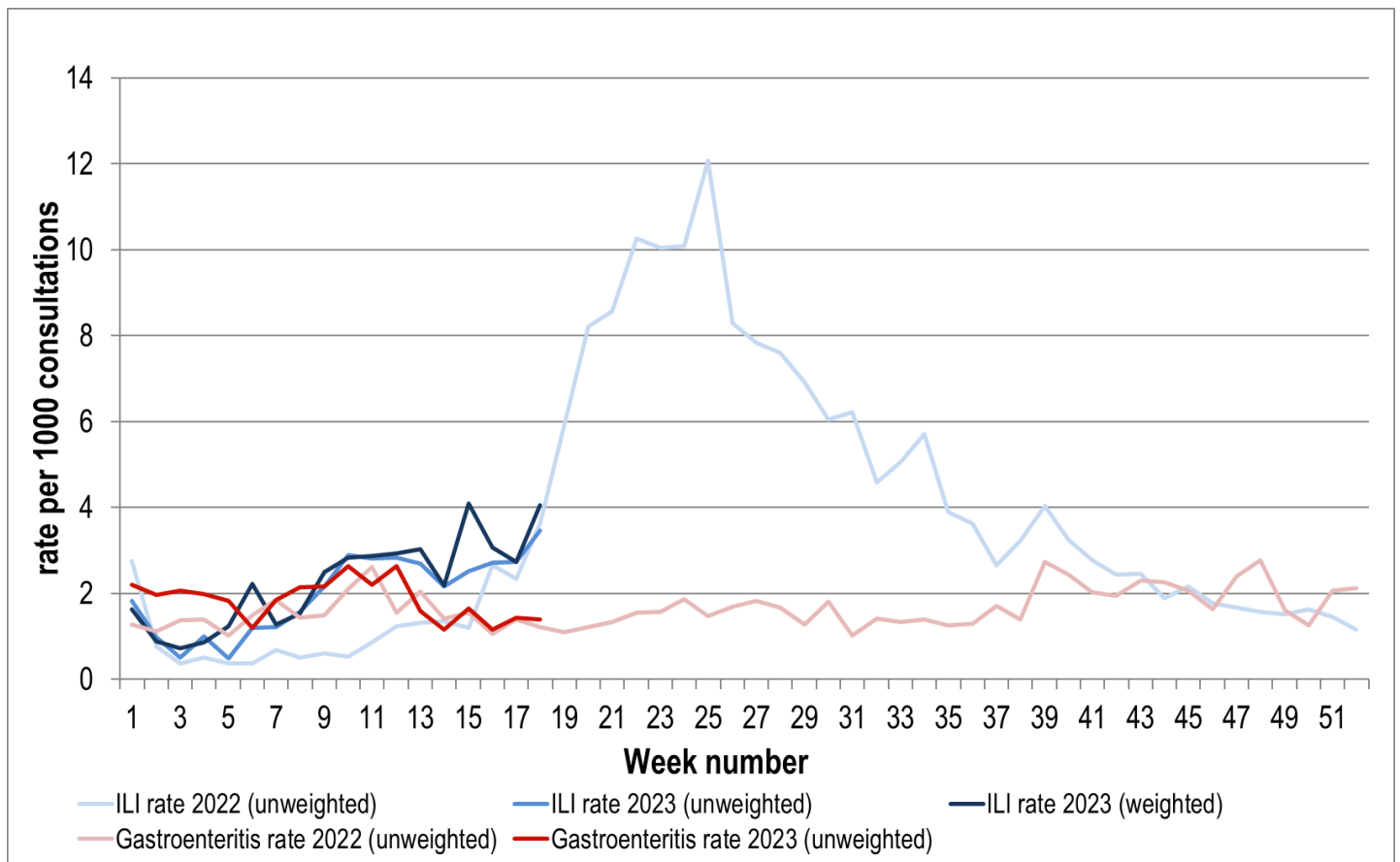


Figure 5. ASPREN ILI and gastroenteritis rates 2022-23. Weighted rates are weighted to account for population size differences between jurisdictions, using population estimates from the 2011 Australian Census.

### VIROLOGICAL SURVEILLANCE

25% of all ILI patients were swab tested during weeks 17 and 18 (see Figure 6).

2 cases of Influenza B and 6 cases of SARS-CoV-2 were detected during this period. There were 2 cases of Rhinovirus detected making it the equal second most common respiratory virus circulating the nation at present (see figure 8).

# Viral laboratory data is provided by SA Pathology laboratory.

	Reporting Period 24 April - 7 May 2023	YTD 1 Jan - 7 May 2023
Total number of ILI notifications	95	538
Number of swab tests performed	24	233
% ILI patients tested	25%	43%
% of swab tests positive for influenza	8%	12%

Figure 6. ASPREN virological surveillance results overview for 2023 #

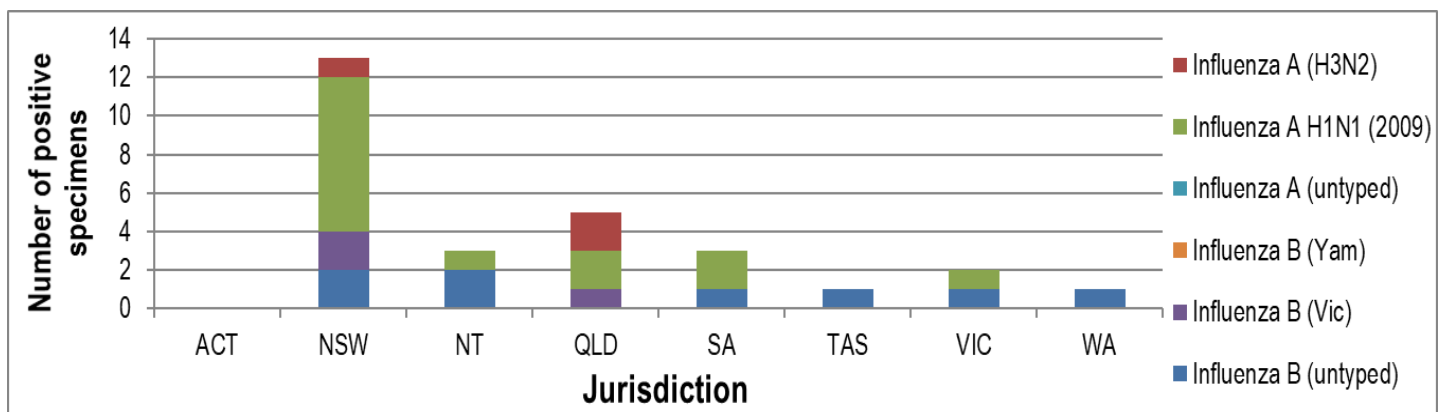


Figure 7. ASPREN influenza subtype analysis by jurisdiction for 2023 #

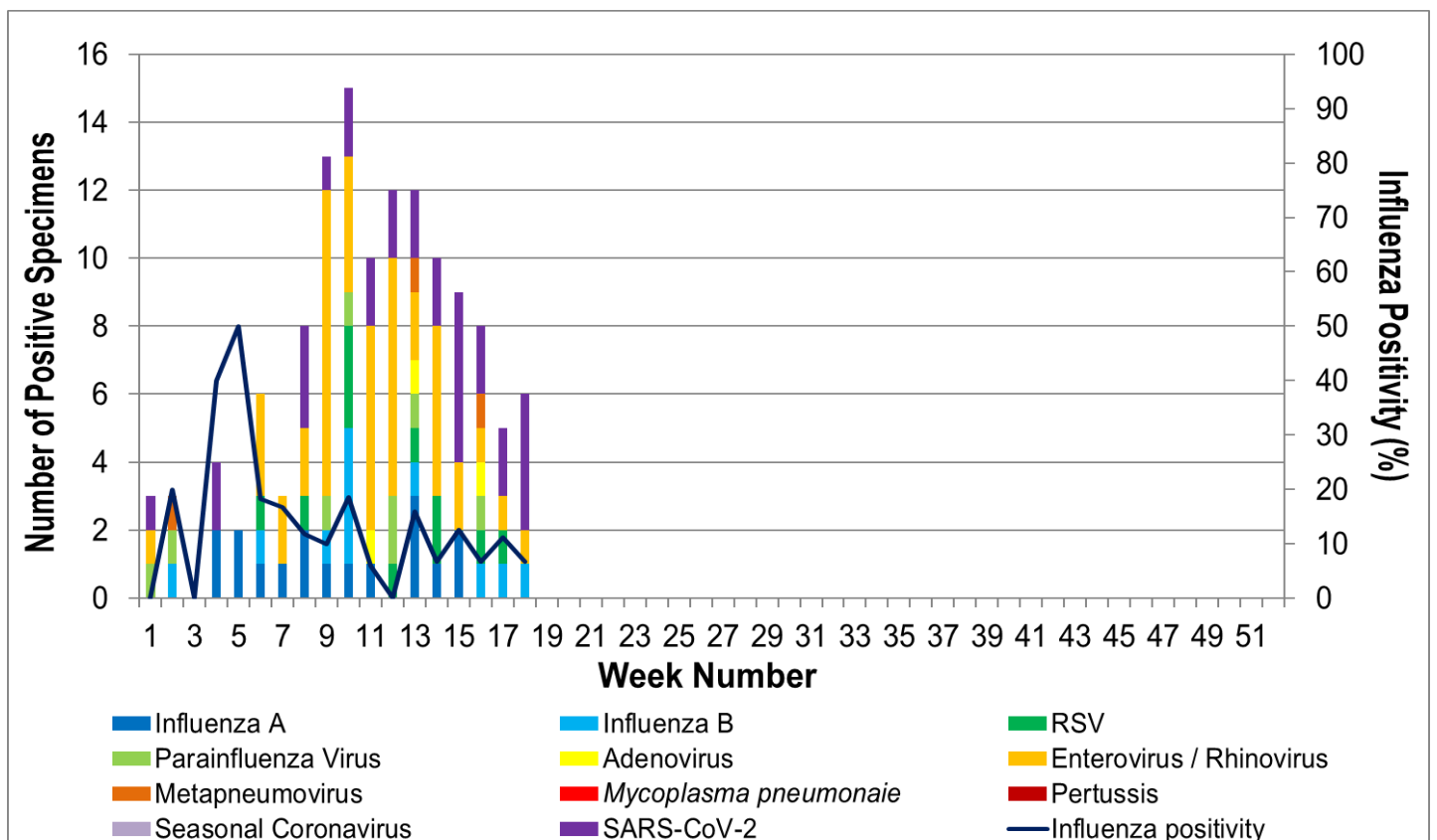


Figure 8. ASPREN, laboratory detection of influenza and other respiratory viruses for 2023 #

The Australian Sentinel Practices Research Network is supported by the Australian Government Department of Health (the Department). The opinions expressed in this paper are those of the authors, and do not necessarily represent the views of the Department.

Please note: This report is based on data available as at 11 May 2023. Delays in the reporting of data may cause data to change retrospectively.