

NATIONAL SUMMARY



Influenza-Like-Illness levels remain low, slightly above baseline levels.

8

Cases of influenza have been detected in this reporting period:
5 x Influenza A (untyped)
2 x Influenza A H1N1(2009)
1 x Influenza B.

32%

Influenza positivity during the reporting period.

12

Cases of influenza have been detected in 2013:
6 x Influenza A (untyped)
3 x Influenza A H1N1(2009)
3 x Influenza B.



Gastroenteritis levels are increasing above baseline levels

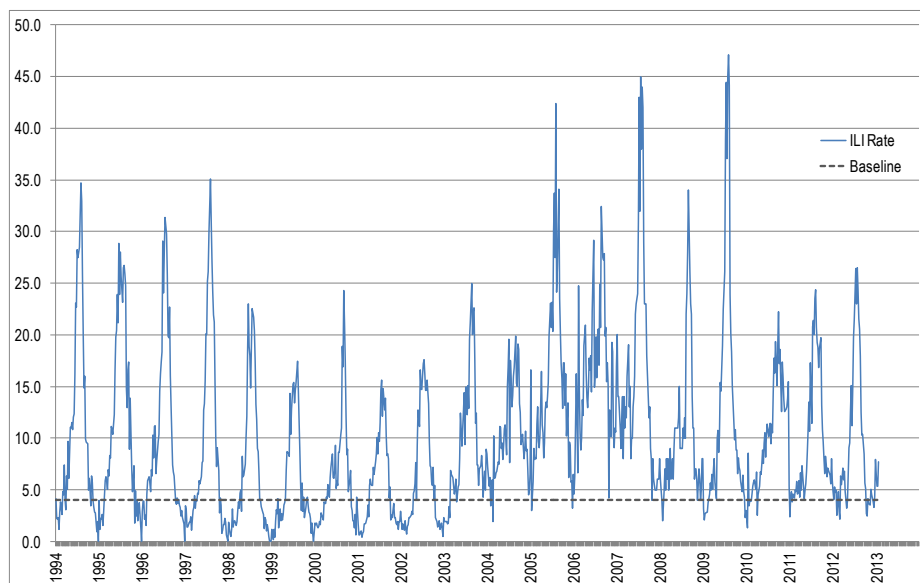


Figure 1. Rates of ILI for ASPREN + SPN(WA) + VIDRL during 1994 - 2013.

SYNDROMIC SURVEILLANCE

REPORTING

Reports were received from 166 GPs from 8 states and territories during the reporting period. During weeks 3 and 4 a total of 10,986 and 6,604 consultations were made, respectively.

INFLUENZA-LIKE-ILLNESS (ILI)

Nationally, ILI notifications remained steady over the period with 59 and 51 notifications in week 3 and 4 respectively. ILI rates reported in this period slightly increased with 5 and 8 cases per 1000 consultations in weeks 3 and 4 respectively, compared to 6 and 5 cases per 1000 in weeks 1 and 2. For the same reporting period in 2012, ILI rates were similar at 5 and 7 cases per 1000 consultations (see Figure 1). On a state-by-state basis, it is important to note the sustained high ILI rate in urban NSW (see figure 3).

GASTROENTERITIS

Nationally, gastro notifications remained steady over the period with 79 and 66 notifications in weeks 3 and 4 respectively. Gastroenteritis rates reported in this period have remained steady with 7 and 10 cases per 1000 consultations for weeks 3 and 4 respectively, compared to 10 and 9 cases per 1000 consultations, for weeks 1 and 2 (see Figure 4).

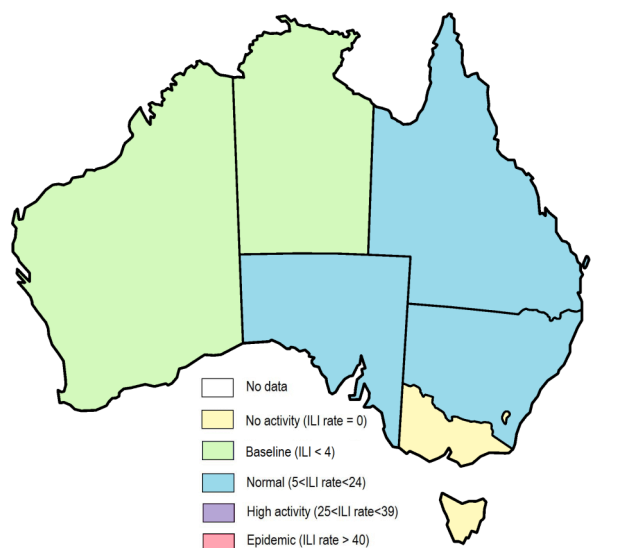


Figure 2. Map of ILI activity by jurisdiction, during weeks 3—4, 2013.

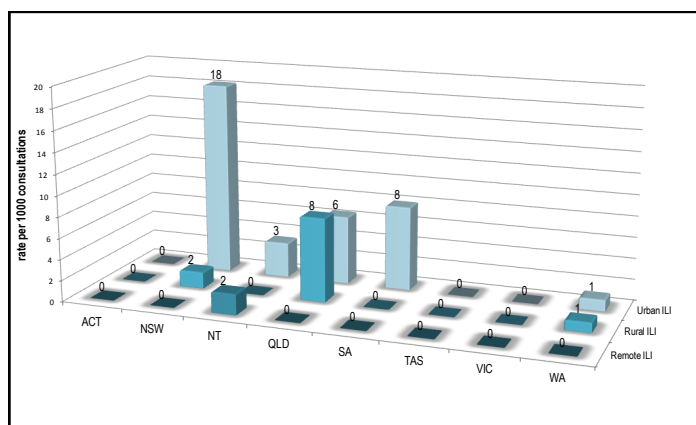


Figure 3. ASPREN + SPN(WA) rate of ILI by area and state, during weeks 3—4, 2013.

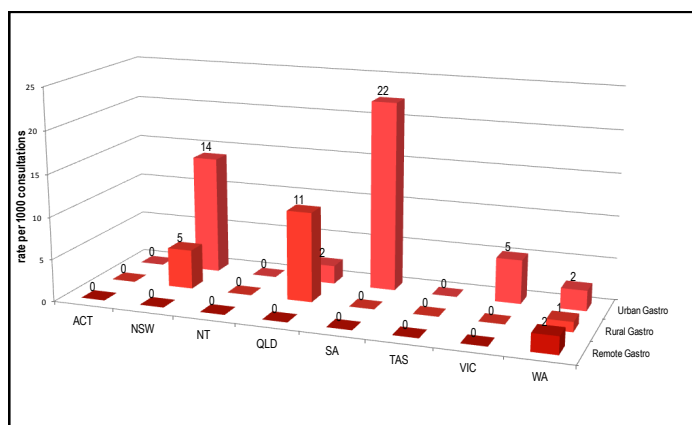


Figure 4. ASPREN + SPN(WA) rate of gastroenteritis by area & state, during weeks 3—4, 2013.

INFLUENZA SWAB TESTING

23% of all ILI patients were swab tested during weeks 3—4 (see Figure 5). Notably, there were 8 cases of Influenza detected during this period, 5 Flu A (untyped), 2 H1N1(2009), and 1 Flu B. There were also 3 cases of RSV detected making it the second most common respiratory virus circulating the nation at present (see figure 7).

	Reporting Period 14 Jan 2013 - 27 Jan 2013	YTD 1 - 27 Jan 2013
Total number of ILI notifications	110	204
Number of swab tests performed	25	44
% ILI patients tested	23%	22%
% of swab tests positive for influenza	32%	27%

Figure 5. ASPREN + SPN(WA) swab testing results overview for weeks 3—4, 2013.

	ACT	NSW	NT	QLD	SA	TAS	VIC	WA	TOTAL
INFLUENZA A (UNTYPED)	0	0	0	1	1	0	0	3	5
INFLUENZA A H1N1(2009)	0	0	0	0	0	0	0	2	2
INFLUENZA B	0	0	0	0	0	0	0	1	1
TOTAL	0	0	0	1	1	0	0	6	8

Figure 6. Influenza subtype analysis by jurisdiction for weeks 3—4, 2013.

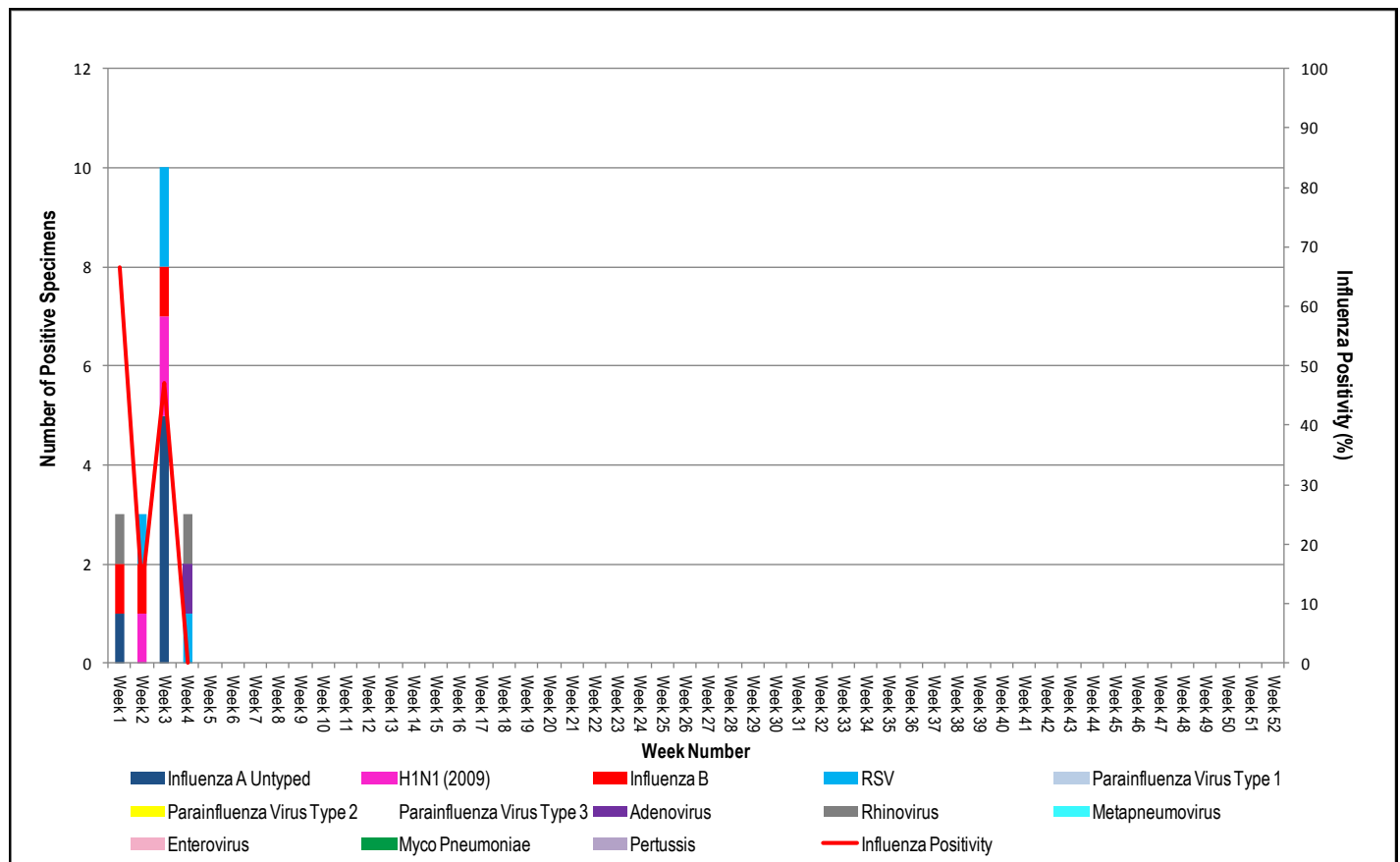


Figure 7. ASPREN + SPN(WA) + VIDRL laboratory detection of influenza and other respiratory viruses during 2013.

Please note: This report is based on data available as at 30 January 2013. Delays in the reporting of data may cause data to change retrospectively.