

**NATIONAL PRIMARY CARE INFECTIOUS DISEASES  
SENTINEL SURVEILLANCE FORTNIGHTLY REPORT**

From The Australian Sentinel Practices Research Network (ASPREN) \*

No. 08, 2023 - 10th April — 23rd April 2023

**NATIONAL SUMMARY**



Influenza-like-illness levels are increasing

**5**

Case of influenza have been detected in this reporting period  
4 x Influenza A  
1 x Influenza B

**10%**

Influenza positivity during the reporting period.

**23**

Cases of influenza have been detected this year:  
15 x Influenza A  
8 x Influenza B



Gastroenteritis levels remain steady below baseline levels

**SYNDROMIC SURVEILLANCE  
REPORTING**

Reports were received from 191 reporters from 8 states and territories during the reporting period. During weeks 15 and 16 reporters saw a total of 30,055 patients.

**INFLUENZA-LIKE-ILLNESS (ILI)**

Nationally, ILI notifications increased during the period with 79 notifications being reported in weeks 15–16. ILI rates reported in this period were 4 and 3 cases per 1000 consultations (weighted). This was higher than the previous fortnight where rates were 3 and 2 cases per 1000 consultations in weeks 13 and 14 respectively. For the same reporting period in 2022, ILI rates were lower at 2 and 3 cases per 1000 consultations for weeks 15 and 16 (see Fig. 5).

**GASTROENTERITIS**

Nationally, gastroenteritis notifications remained steady at 41 notifications reported. Gastroenteritis rates reported in this period were similar at 2 and 1 cases per 1000 consultations in weeks 15 and 16 respectively, compared to 2 and 1 cases per 1000 consultations in weeks 13 and 14 respectively (see Fig. 5).

\* ASPREN is funded by the Commonwealth's Department of Health, Office of Health Protection, Vaccine Preventable Disease Surveillance Section.

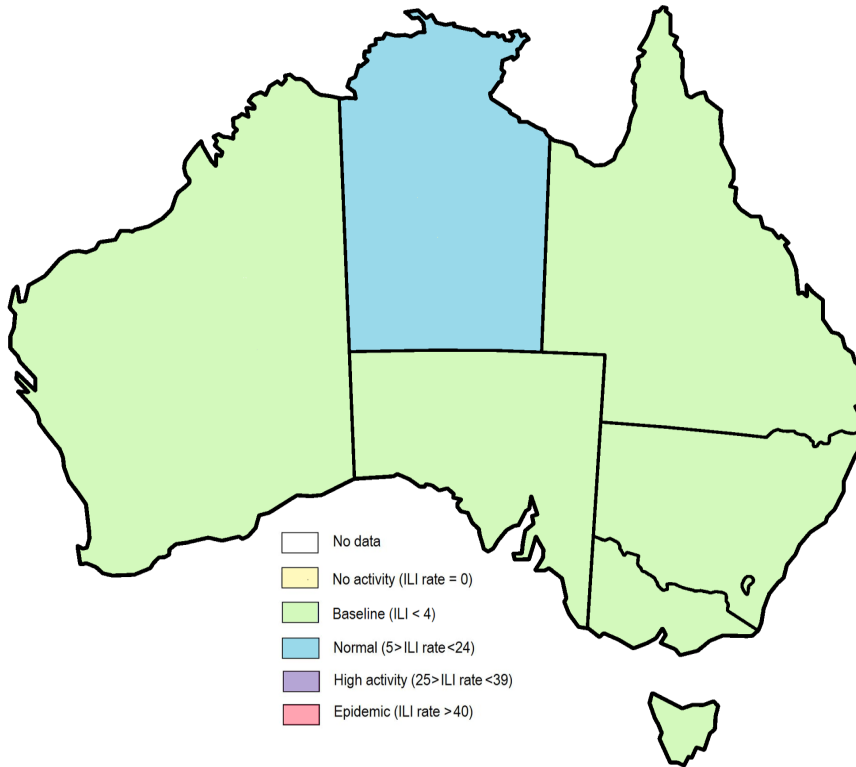


Figure 1. Map of ILI activity by jurisdiction, weeks 15 - 16, 2023.

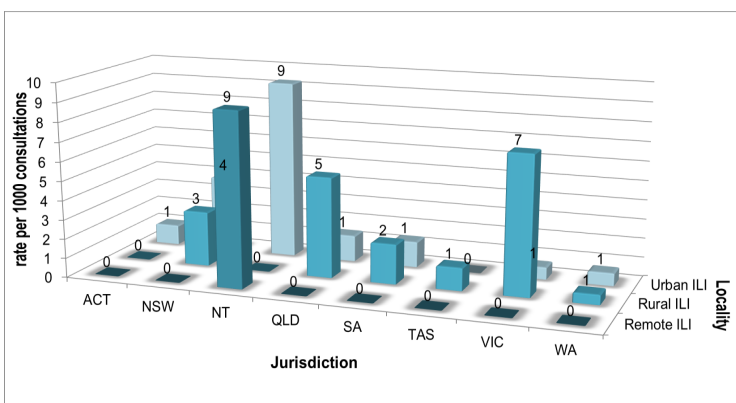


Figure 2. ASPREN rate of ILI by locality and jurisdiction, weeks 15 - 16, 2023.

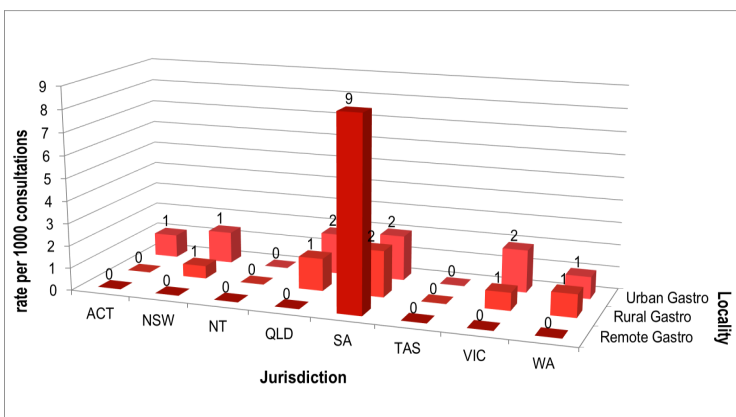


Figure 3. ASPREN rate of gastroenteritis by locality and jurisdiction, weeks 15 - 16, 2023.

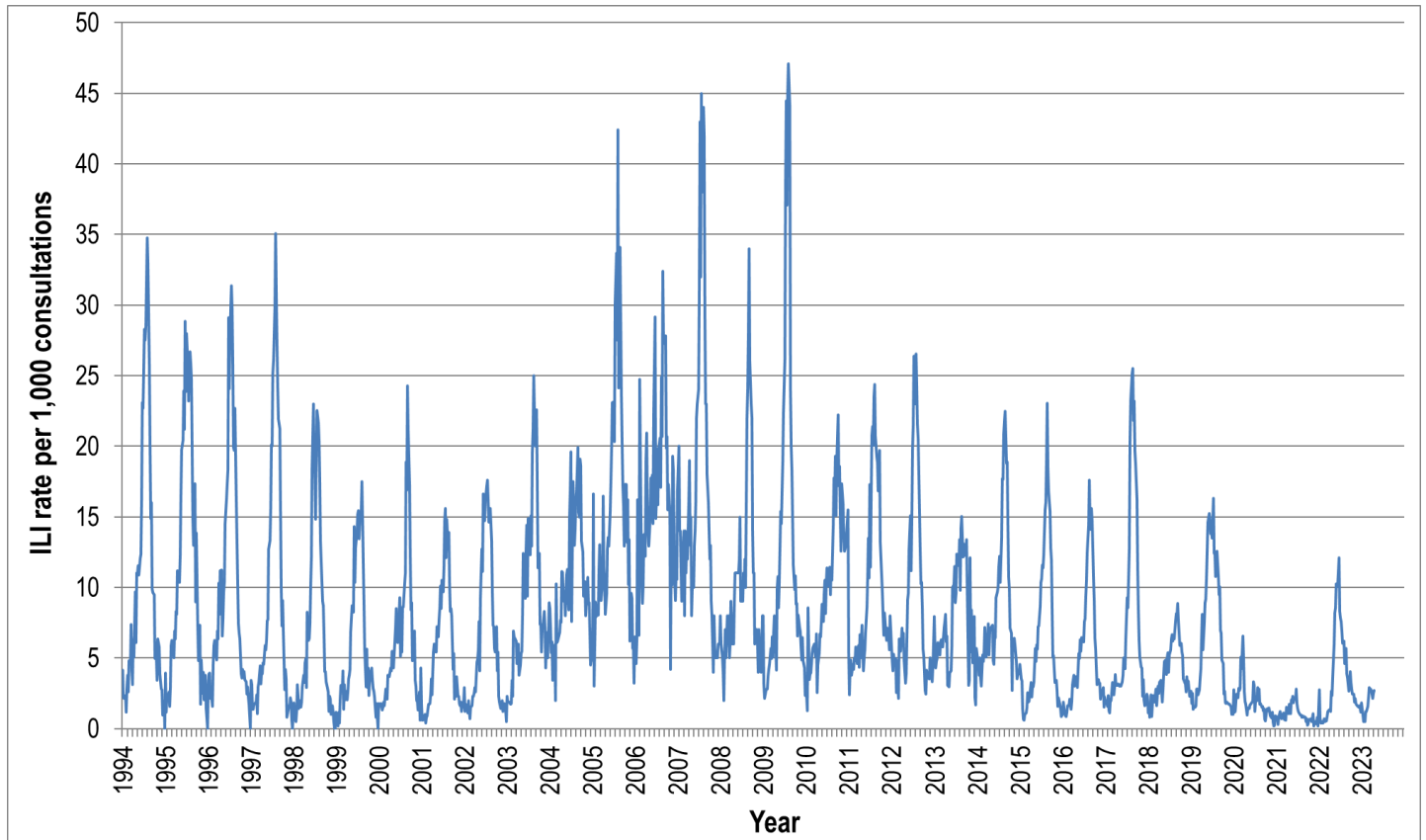


Figure 4. ASPREN ILI rates 1994 - 2023.

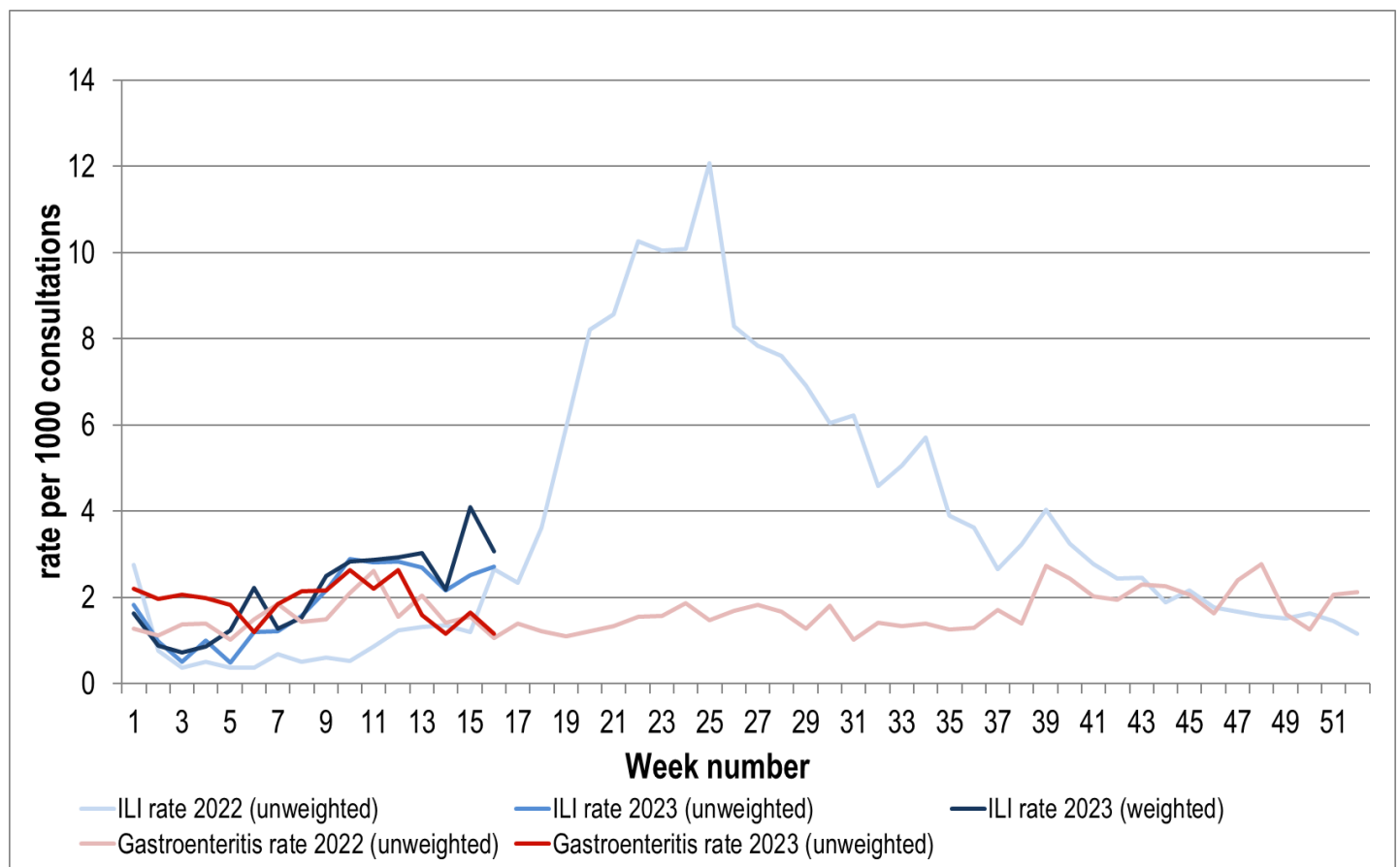


Figure 5. ASPREN ILI and gastroenteritis rates 2022-23. Weighted rates are weighted to account for population size differences between jurisdictions, using population estimates from the 2011 Australian Census.

### VIROLOGICAL SURVEILLANCE

39% of all ILI patients were swab tested during weeks 15 and 16 (see Figure 6).

2 cases of Influenza A, 1 case of Influenza B and 7 cases of SARS-CoV-2 were detected during this period. There were 3 cases of Rhinovirus detected making it the second most common respiratory virus circulating the nation at present (see figure 8).

# Viral laboratory data is provided by SA Pathology laboratory.

	Reporting Period 10 April - 23 April 2023	YTD 1 Jan - 23 April 2023
Total number of ILI notifications	79	443
Number of swab tests performed	31	209
% ILI patients tested	39%	47%
% of swab tests positive for influenza	10%	12%

Figure 6. ASPREN virological surveillance results overview for 2023 #

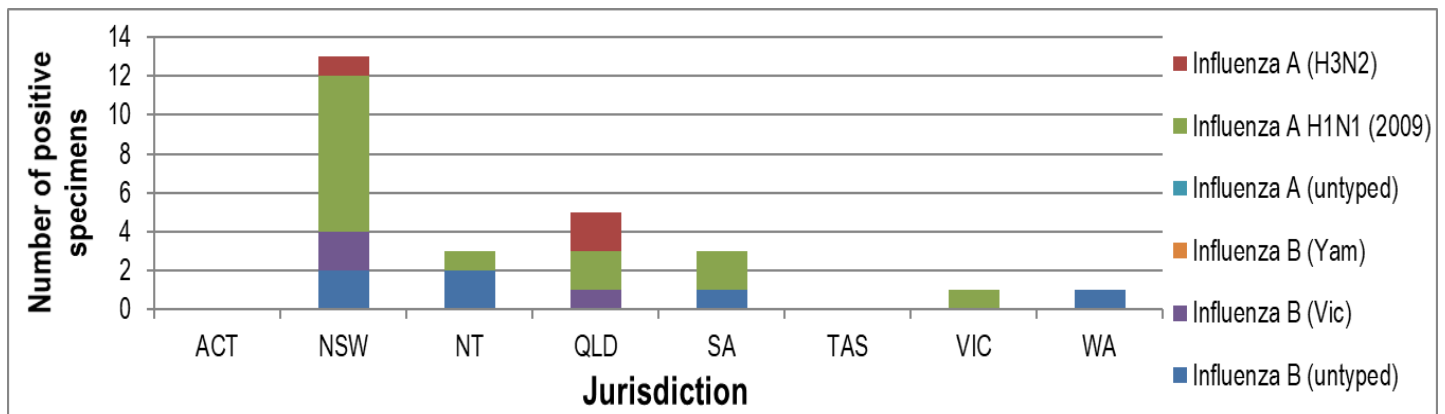


Figure 7. ASPREN influenza subtype analysis by jurisdiction for 2023 #

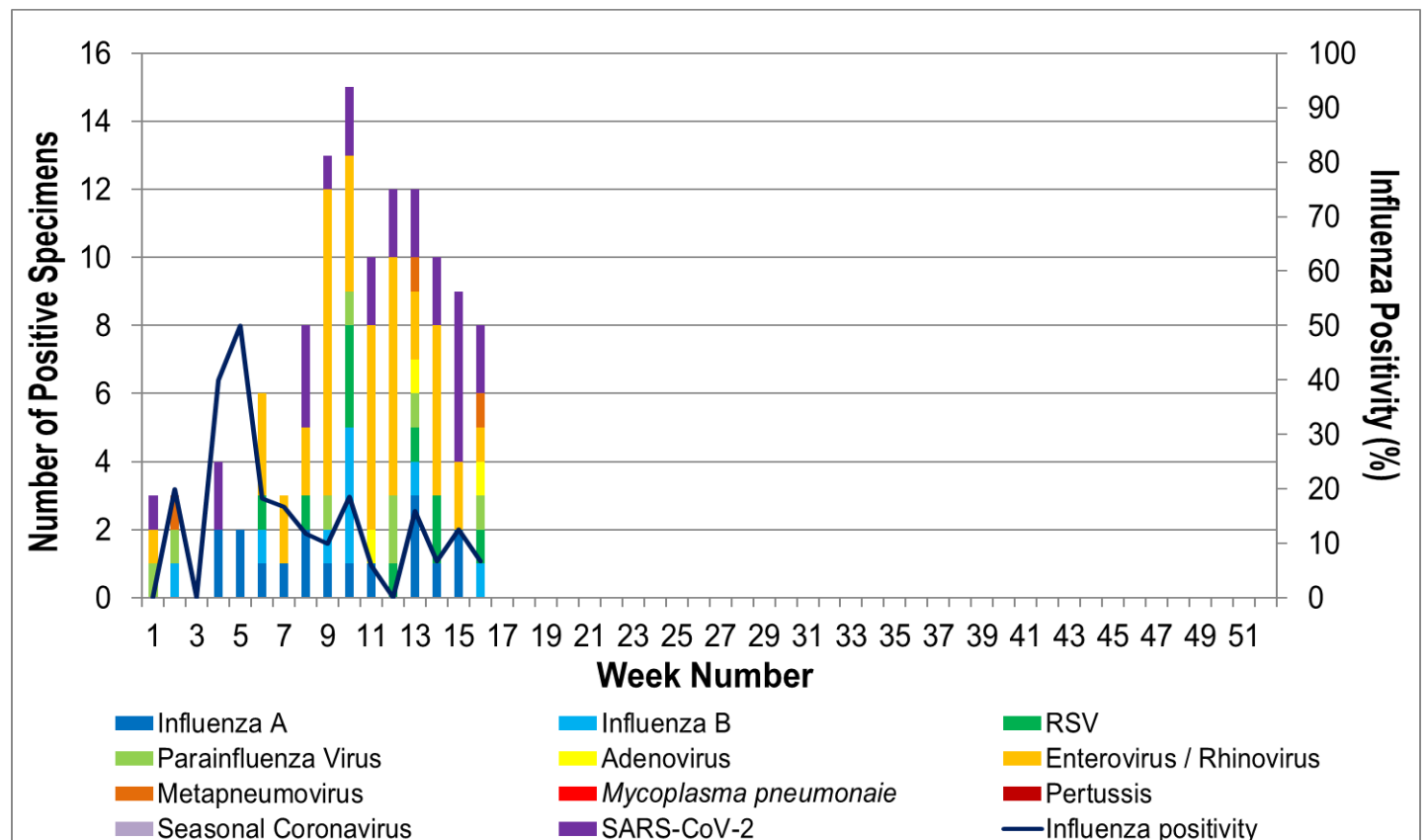


Figure 8. ASPREN, laboratory detection of influenza and other respiratory viruses for 2023 #

The Australian Sentinel Practices Research Network is supported by the Australian Government Department of Health (the Department). The opinions expressed in this paper are those of the authors, and do not necessarily represent the views of the Department.

Please note: This report is based on data available as at 27 April 2023. Delays in the reporting of data may cause data to change retrospectively.