

## NATIONAL GP SENTINEL SURVEILLANCE FORTNIGHTLY REPORT

Combining data from The Australian Sentinel Practices Research Network and jurisdictional surveillance systems SPN(WA), TISS-NT and VIDRL

No. 11, 2015  
18th May - 31st May 2015

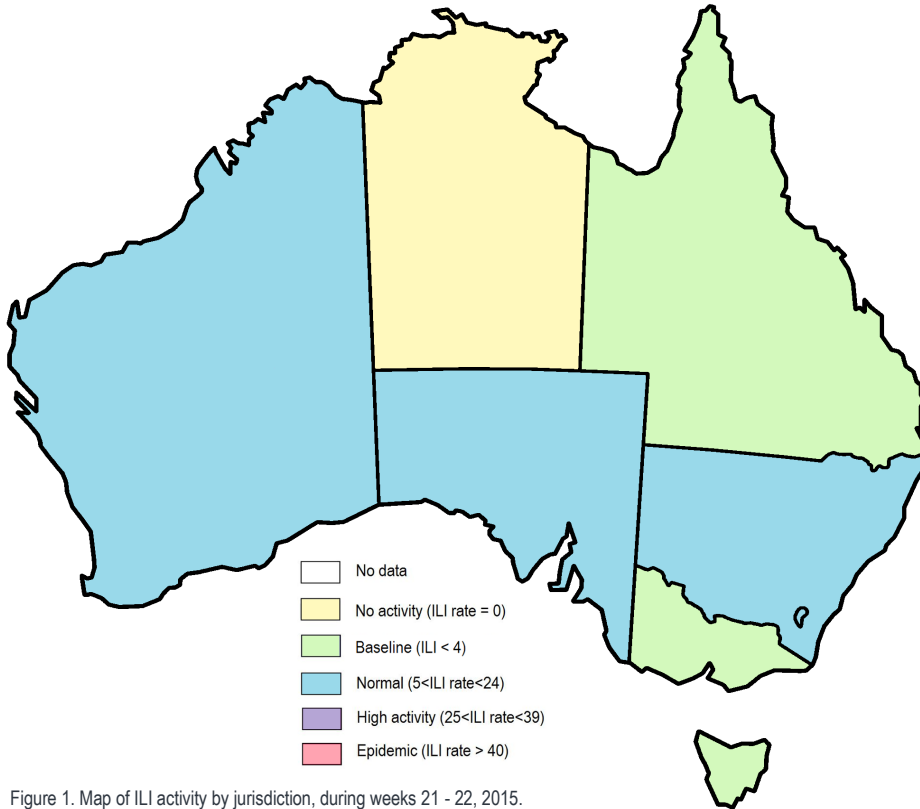


Figure 1. Map of ILI activity by jurisdiction, during weeks 21 - 22, 2015.

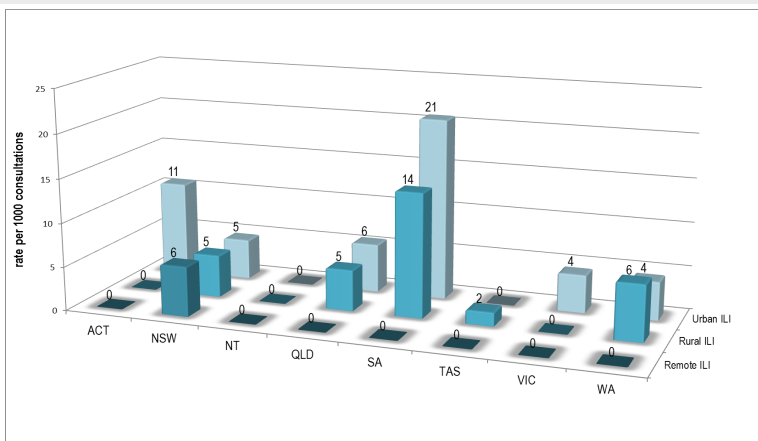


Figure 2. ASPREN + SPN(WA) rate of ILI by area and state, during weeks 21 - 22, 2015.

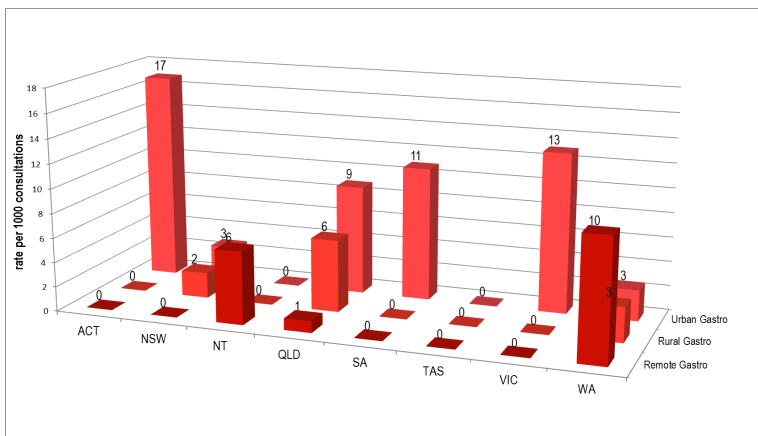


Figure 3. ASPREN + SPN(WA) rate of gastroenteritis by area & state, during weeks 21 - 22, 2015.

Please note: This report is based on data available as at 4 June 2015. Delays in the reporting of data may cause data to change retrospectively.

## NATIONAL SUMMARY

**12** Influenza-Like-Illness levels remain steady above baseline level.

**8%** Cases of influenza have been detected in this reporting period:  
0 x Influenza A  
12 x Influenza B

**68** Influenza positivity during the reporting period.

**↑** Cases of influenza have been detected in 2015:  
30 x Influenza A  
38 x Influenza B

Gastroenteritis levels increased remaining above baseline level.

## SYNDROMIC SURVEILLANCE

### REPORTING

Reports were received from 252 GPs from 8 states and territories during the reporting period. During weeks 21 and 22 a total of 20,060 and 18,250 consultations were made, respectively.

### INFLUENZA-LIKE-ILLNESS (ILI)

Nationally, ILI notifications increased over the period with 92 and 74 notifications in weeks 21 and 22 respectively. ILI rates reported in this period decreased slightly with 6 and 4 cases per 1000 consultations in weeks 21 and 22 respectively, compared to 7 and 4 cases per 1000 consultations in weeks 19 and 20 respectively. For the same reporting period in 2014, ILI rates were the same at 4 and 6 cases per 1000 consultations respectively (see Figure 5). On a state-by-state basis, it is important to note the increased ILI rate in Urban SA (see Figure 2).

### GASTROENTERITIS

Nationally, gastro notifications increased over the period with 47 and 51 notifications in weeks 21 and 22 respectively. Gastroenteritis rates reported in this period increased slightly with 4 and 9 cases per 1000 consultations for weeks 21 and 22 respectively, compared to 6 and 5 cases per 1000 consultations for weeks 19 and 20 respectively (see Figure 3).

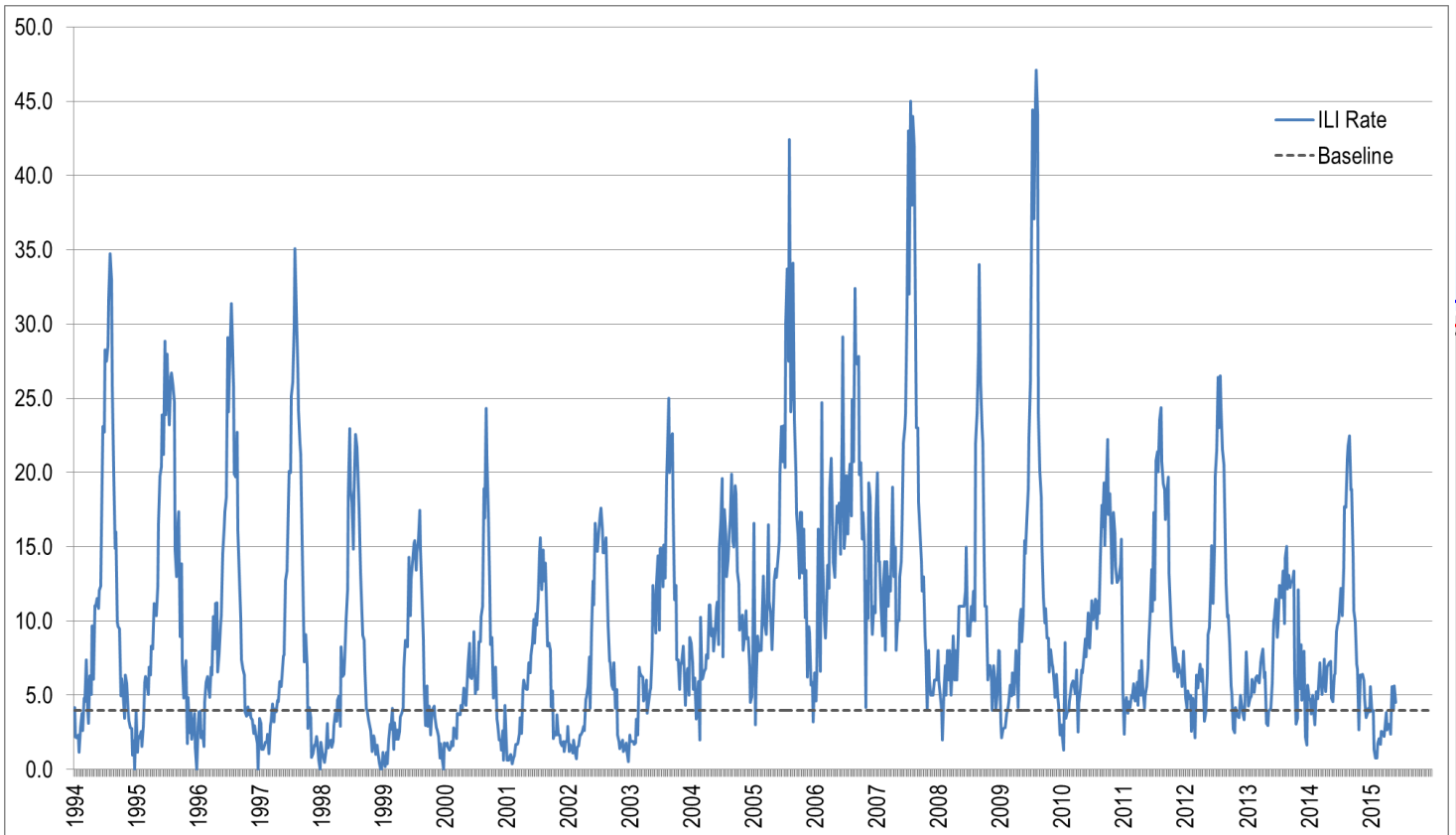


Figure 4. Rates of ILI for ASPREN + SPN(WA) + VIDRL during 1994 - 2015.

Note: From 2013, results are weighted to account for population size differences between jurisdictions, using population estimates from the 2011 Australian Census.

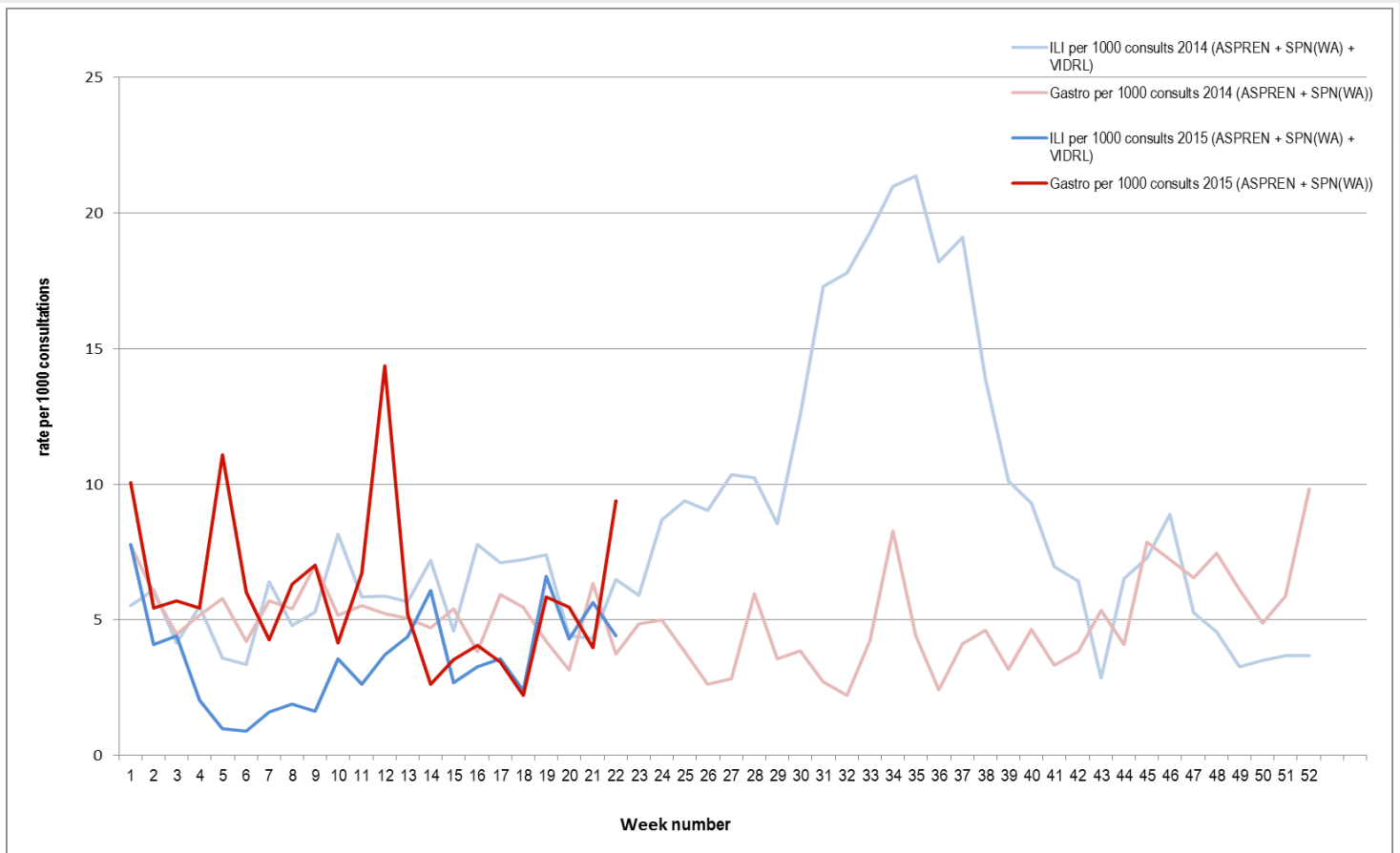


Figure 5. ILI and Gastroenteritis rates 2014-15.

**INFLUENZA SWAB TESTING**

90% of all ILI patients were swab tested during weeks 21 - 22 (see Figure 6). Notably, there were 12 cases of Influenza detected during this period, 0 Flu A (Untyped), 0 Flu A (H1N1 2009), 0 Flu A (H3N2), and 12 Flu B. There were also 26 cases of Rhinovirus detected, making it the most common respiratory virus circulating the nation at present (see figure 8).

	Reporting Period	YTD
	18 May 2015 - 31 May 2015	1 Jan 2015 - 31 May 2015
Total number of ILI notifications	166	914
Number of swab tests performed	150	593
% ILI patients tested	90%	65%
% of swab tests positive for influenza	8%	11%

Figure 6. ASPREN + SPN(WA) swab testing results overview for 2015.

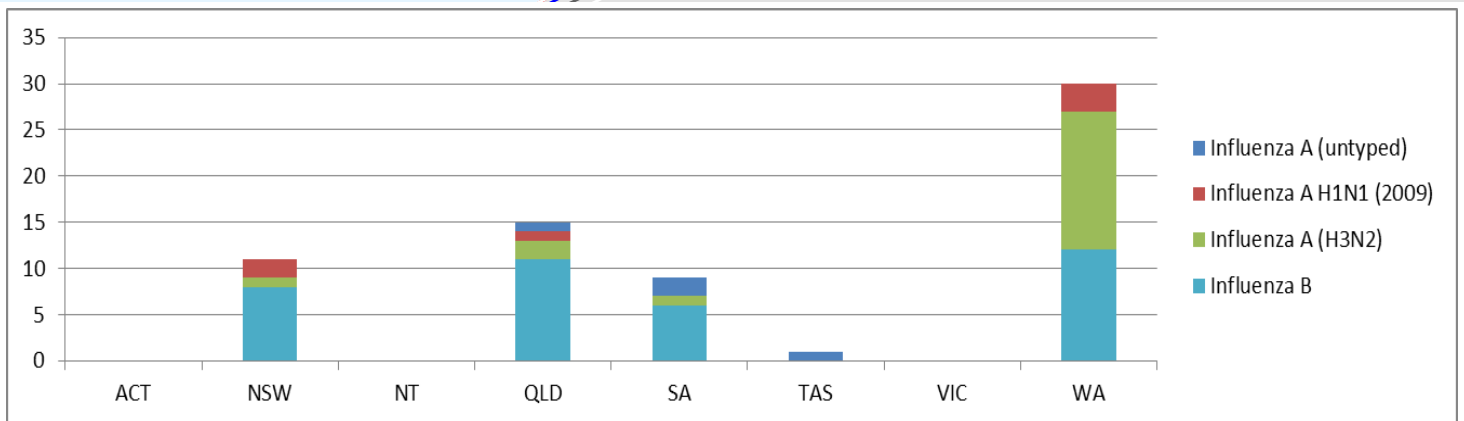


Figure 7. ASPREN + SPN(WA) + VIDRL influenza subtype analysis by jurisdiction for 2015.

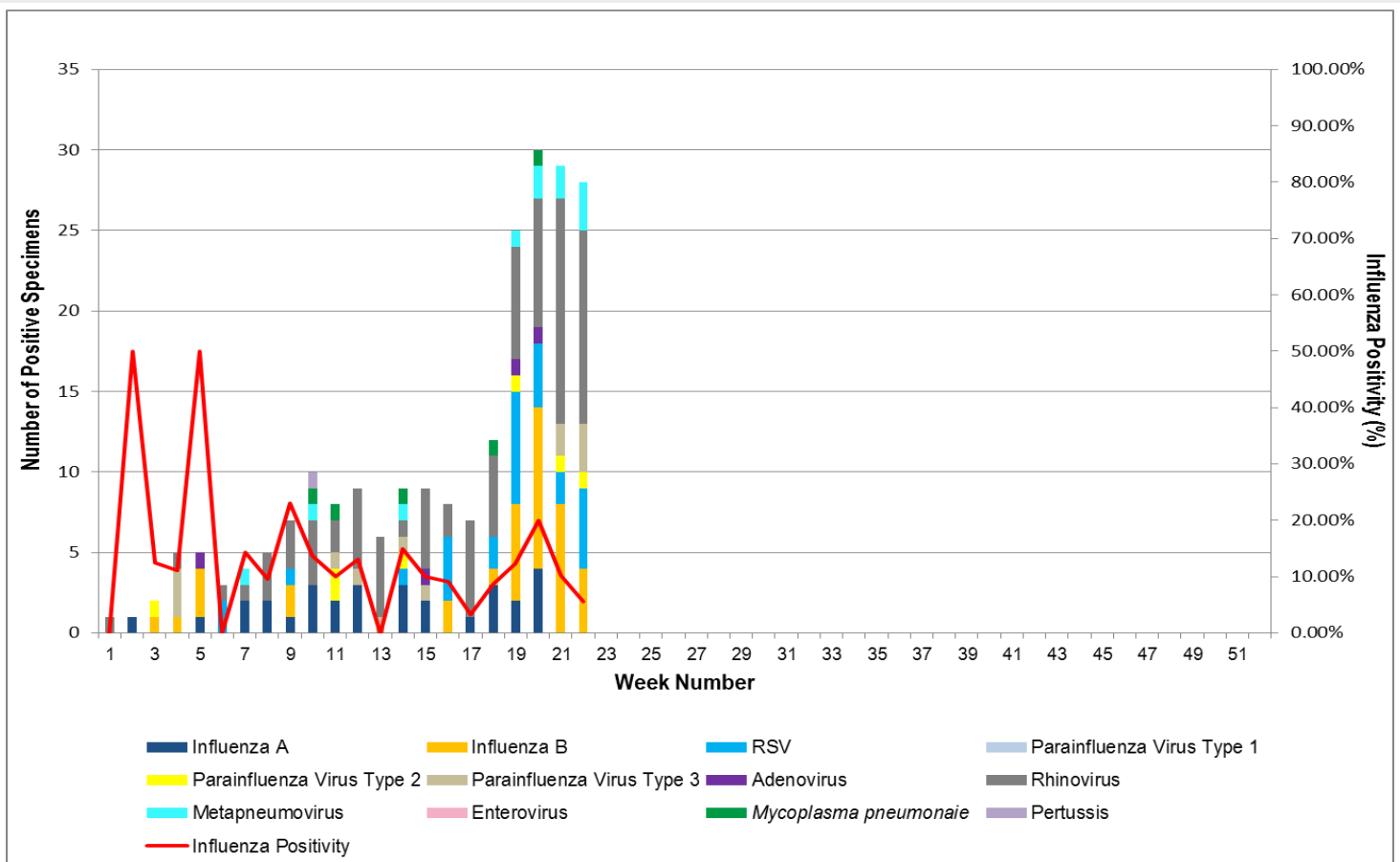


Figure 8. ASPREN + SPN(WA) + VIDRL laboratory detection of influenza and other respiratory viruses during 2015.

Please note: This report is based on data available as at 4 June 2015. Delays in the reporting of data may cause data to change retrospectively.