

**NATIONAL PRIMARY CARE INFECTIOUS DISEASES
SENTINEL SURVEILLANCE FORTNIGHTLY REPORT**

From The Australian Sentinel Practices Research Network (ASPREN) *

No. 03, 2023 - 30th Jan — 12th Feb 2023

NATIONAL SUMMARY



Influenza-like-illness levels are increasing

4

Cases of influenza have been detected in this reporting period
3 x Influenza A
1 x Influenza B

27%

Influenza positivity during the reporting period.

7

Cases of influenza have been detected this year:
5 x Influenza A
2 x Influenza B



Gastroenteritis levels remain steady below baseline levels

**SYNDROMIC SURVEILLANCE
REPORTING**

Reports were received from 196 reporters from 8 states and territories during the reporting period. During weeks 5 and 6 reporters saw a total of 33,142 patients.

INFLUENZA-LIKE-ILLNESS (ILI)

Nationally, ILI notifications increased during the period with 28 notifications being reported in weeks 5—6. ILI rates reported in this period were 1 and 2 cases per 1000 consultations (weighted). This was slightly higher than the previous fortnight where rates were 1 case per 1000 consultations in weeks 3 and 4 respectively. For the same reporting period in 2022, ILI rates were slightly lower at 1 case per 1000 consultations for weeks 5 and 6 (see Fig. 5).

GASTROENTERITIS

Nationally, gastroenteritis notifications remained steady at 50 notifications reported. Gastroenteritis rates reported in this period were slightly lower at 2 and 1 cases per 1000 consultations in weeks 3 and 4 respectively, compared to 2 cases per 1000 consultations in weeks 3 and 4 (see Fig. 5).

* ASPREN is funded by the Commonwealth's Department of Health, Office of Health Protection, Vaccine Preventable Disease Surveillance Section.

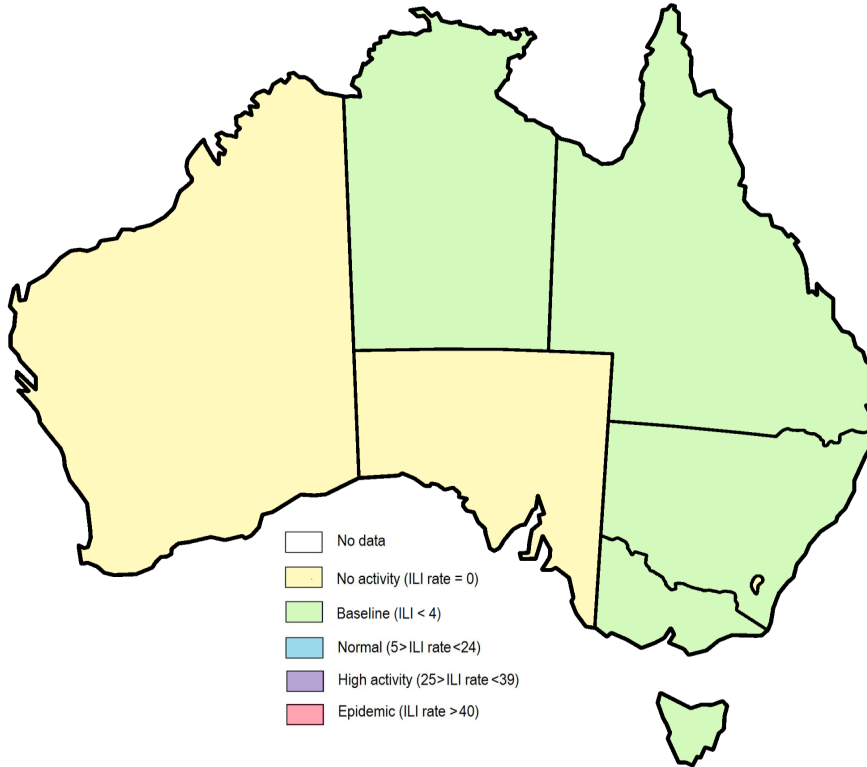


Figure 1. Map of ILI activity by jurisdiction, weeks 05 - 06, 2023.

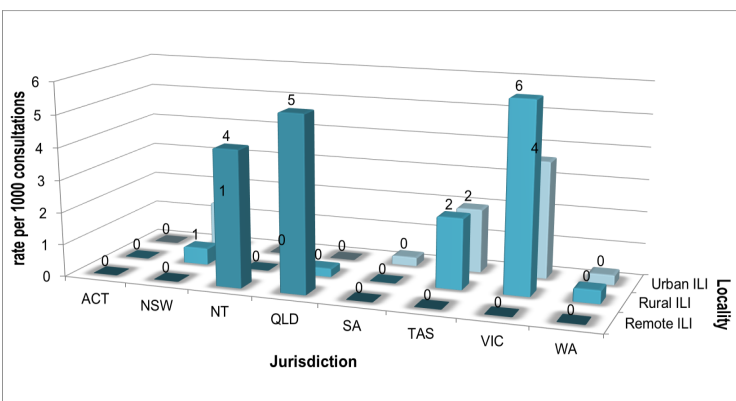


Figure 2. ASPREN rate of ILI by locality and jurisdiction, weeks 05 - 06, 2023.

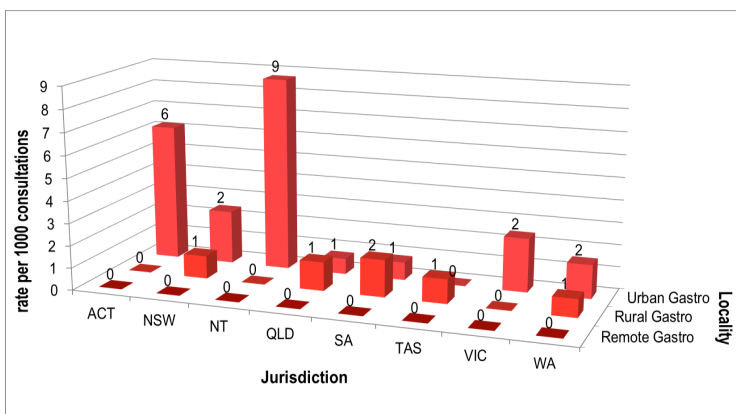


Figure 3. ASPREN rate of gastroenteritis by locality and jurisdiction, weeks 05 - 06, 2023.

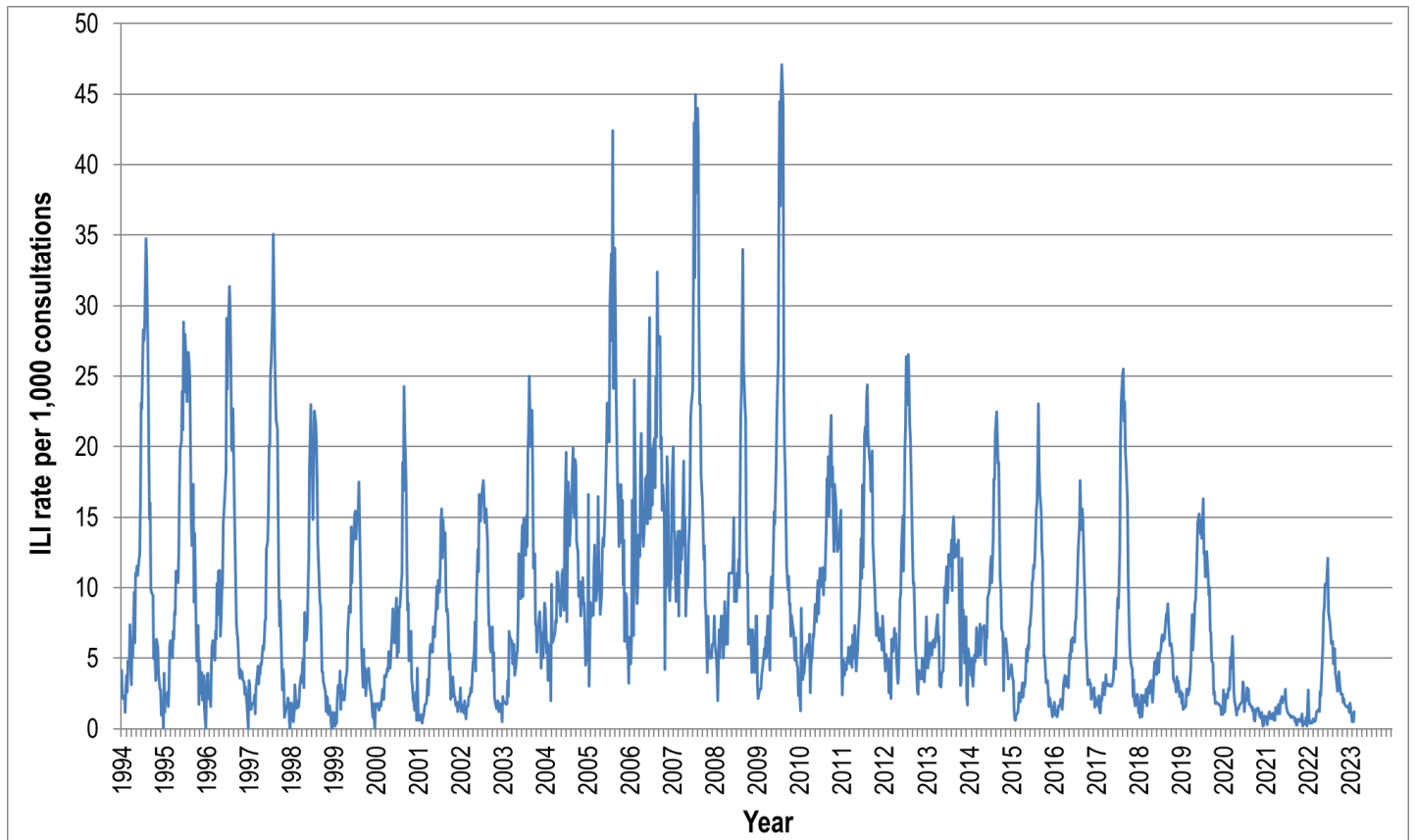


Figure 4. ASPREN ILI rates 1994 - 2023.

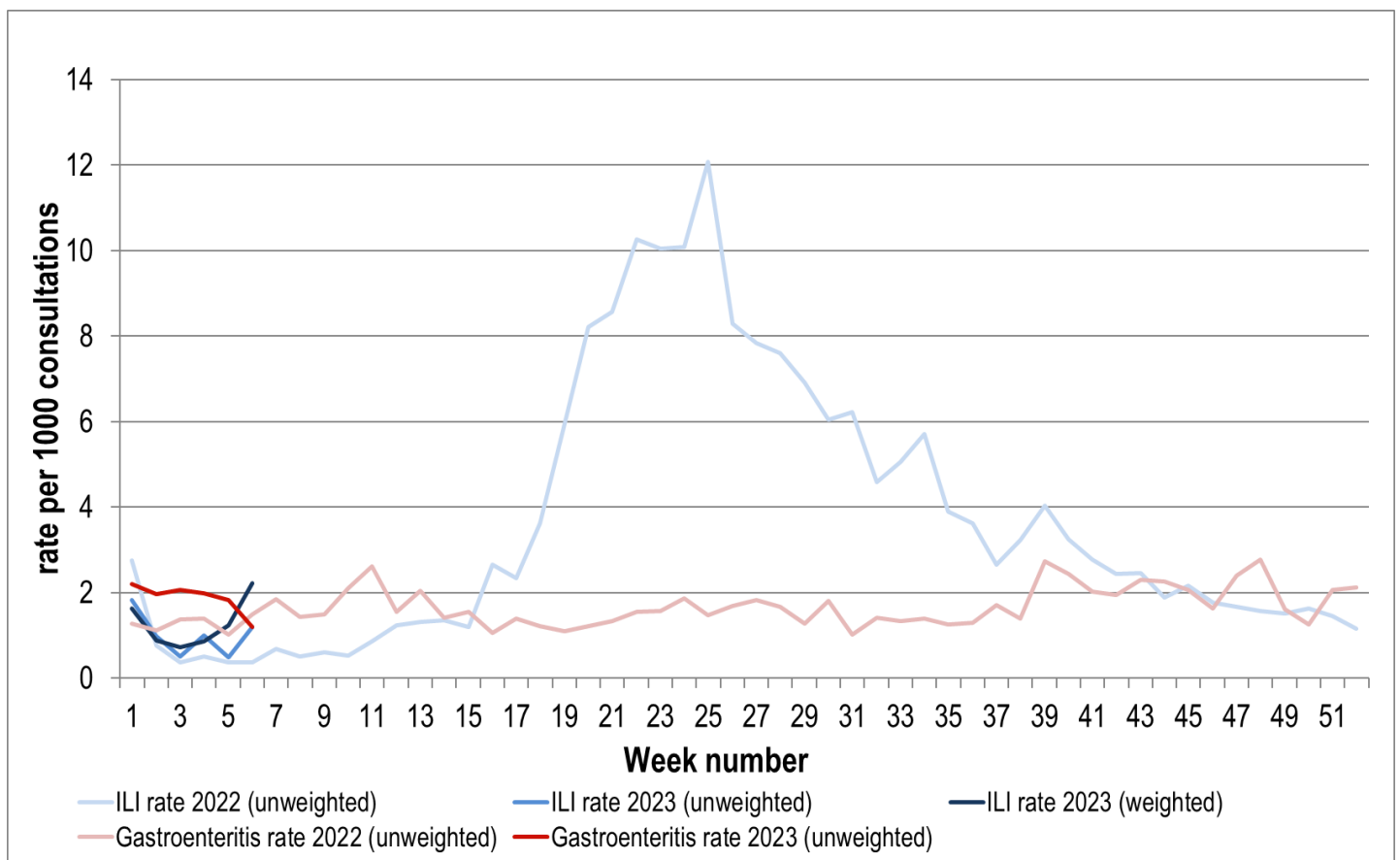


Figure 5. ASPREN ILI and gastroenteritis rates 2022-23. Weighted rates are weighted to account for population size differences between jurisdictions, using population estimates from the 2011 Australian Census.

VIROLOGICAL SURVEILLANCE

27% of all ILI patients were swab tested during weeks 5 and 6 (see Figure 6).

3 cases of Influenza A, 1 case of Influenza B and no cases of SARS-CoV-2 were detected during this period. There were 3 cases of Rhinovirus detected making it the equal most common respiratory virus circulating the nation at present (see figure 8).

Viral laboratory data is provided by SA Pathology laboratory.

	Reporting Period	YTD
	30 Jan - 12 Feb 2023	1 Jan - 12 Feb 2023
Total number of ILI notifications	28	81
Number of swab tests performed	15	34
% ILI patients tested	54%	42%
% of swab tests positive for influenza	27%	21%

Figure 6. ASPREN virological surveillance results overview for 2023 #

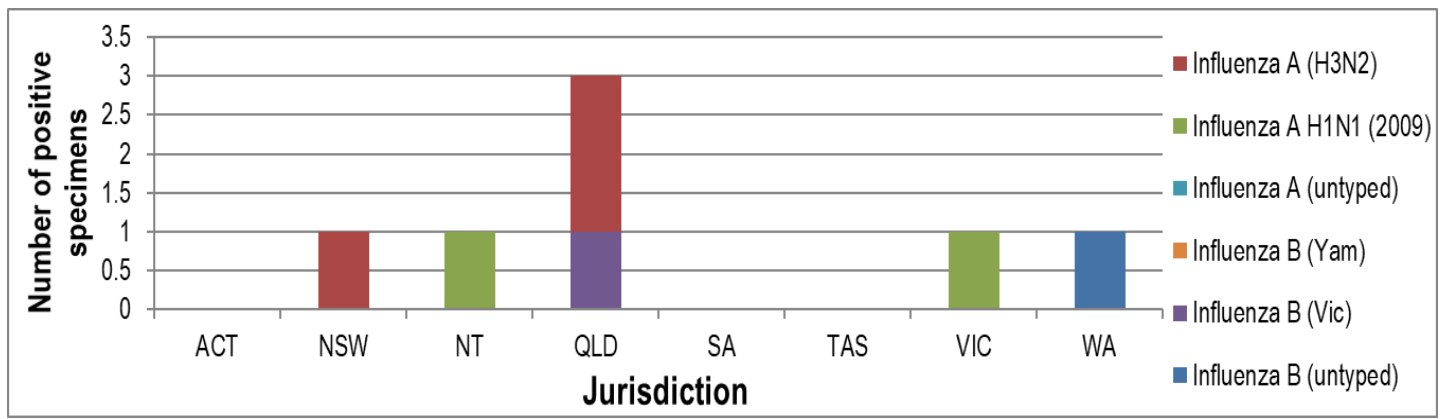


Figure 7. ASPREN influenza subtype analysis by jurisdiction for 2023 #

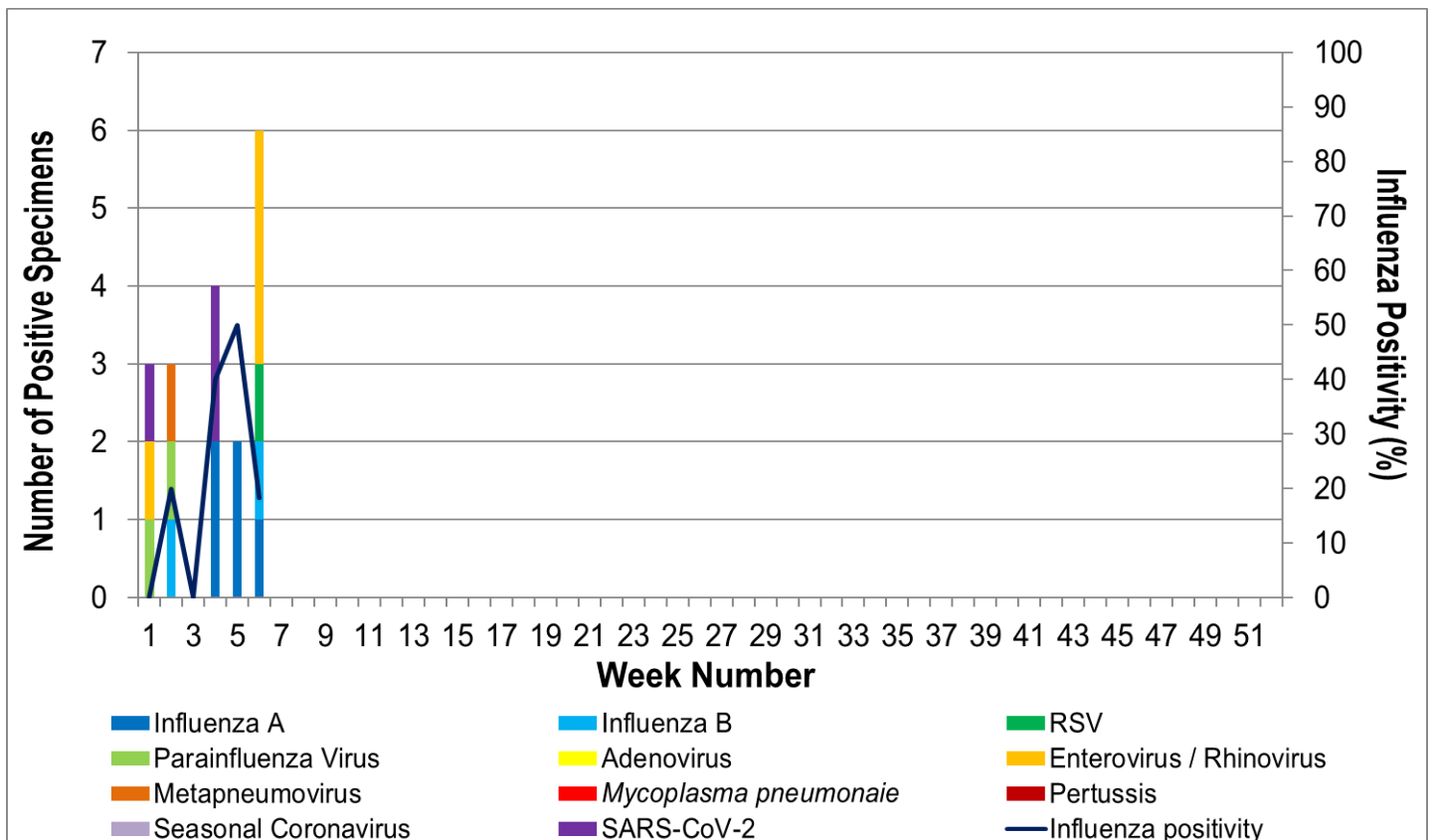


Figure 8. ASPREN, laboratory detection of influenza and other respiratory viruses for 2023 #

The Australian Sentinel Practices Research Network is supported by the Australian Government Department of Health (the Department). The opinions expressed in this paper are those of the authors, and do not necessarily represent the views of the Department.

Please note: This report is based on data available as at 16 Feb 2023. Delays in the reporting of data may cause data to change retrospectively.