

**NATIONAL PRIMARY CARE INFECTIOUS DISEASES
SENTINEL SURVEILLANCE FORTNIGHTLY REPORT**

From The Australian Sentinel Practices Research Network (ASPREN) *

No. 02, 2023 - 16th Jan — 29th Jan 2023

NATIONAL SUMMARY

1 Influenza-like-illness levels remain steady below baseline levels

2 Case of influenza have been detected in this reporting period
2 x Influenza A
0 x Influenza B

33% Influenza positivity during the reporting period.

3 Cases of influenza have been detected this year:
2 x Influenza A
1 x Influenza B

1 Gastroenteritis levels remain steady below baseline levels

**SYNDROMIC SURVEILLANCE
REPORTING**

Reports were received from 191 reporters from 8 states and territories during the reporting period. During weeks 3 and 4 reporters saw a total of 26,103 patients.

INFLUENZA-LIKE-ILLNESS (ILI)

Nationally, ILI notifications decreased during the period with 19 notifications being reported in weeks 3—4. ILI rates reported in this period were 1 case per 1000 consultations (weighted). This was slightly lower than the previous fortnight where rates were 2 and 1 cases per 1000 consultations in weeks 1 and 2 respectively. For the same reporting period in 2022, ILI rates were similar at 1 case per 1000 consultations for weeks 3 and 4 (see Fig. 5).

GASTROENTERITIS

Nationally, gastroenteritis notifications remained steady at 53 notifications reported. Gastroenteritis rates reported in this period were similar at 2 cases per 1000 consultations in weeks 3 and 4, compared to 2 cases per 1000 consultations in weeks 1 and 2 (see Fig. 5).

* ASPREN is funded by the Commonwealth's Department of Health, Office of Health Protection, Vaccine Preventable Disease Surveillance Section.

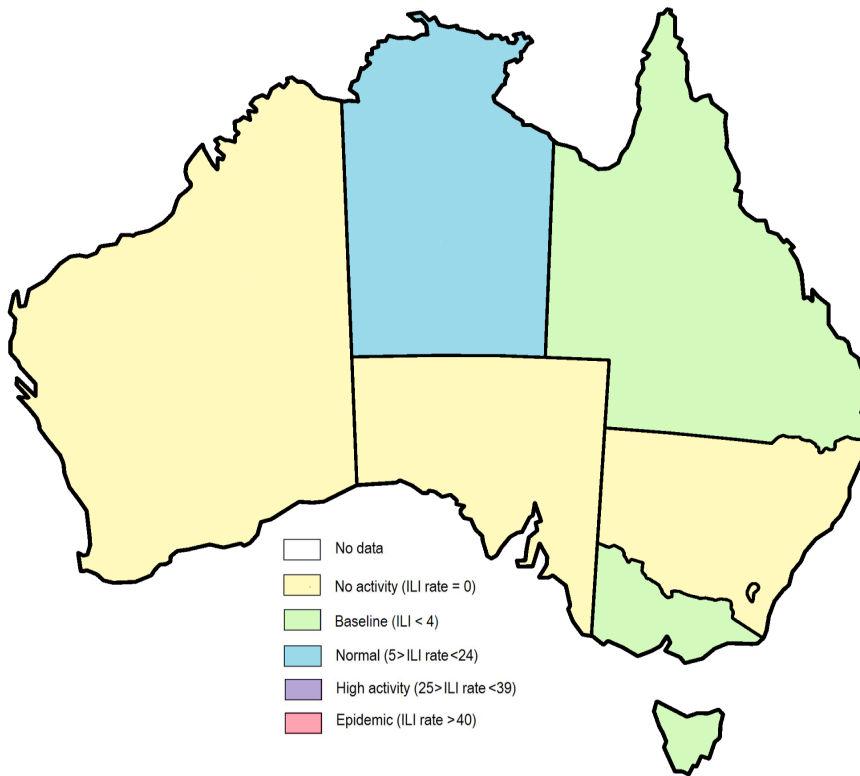


Figure 1. Map of ILI activity by jurisdiction, weeks 03 - 04, 2023.

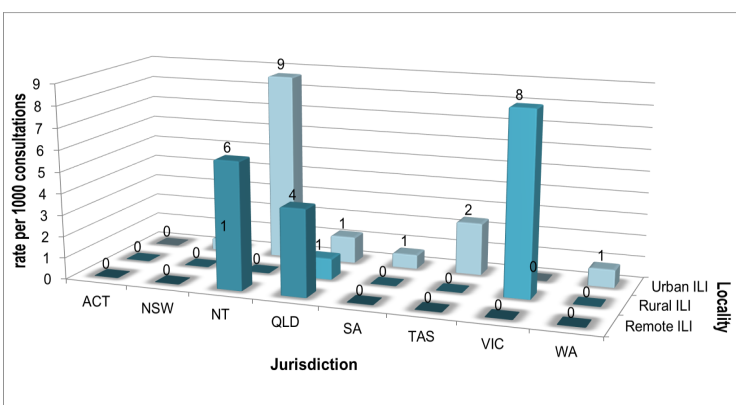


Figure 2. ASPREN rate of ILI by locality and jurisdiction, weeks 03 - 04, 2023.

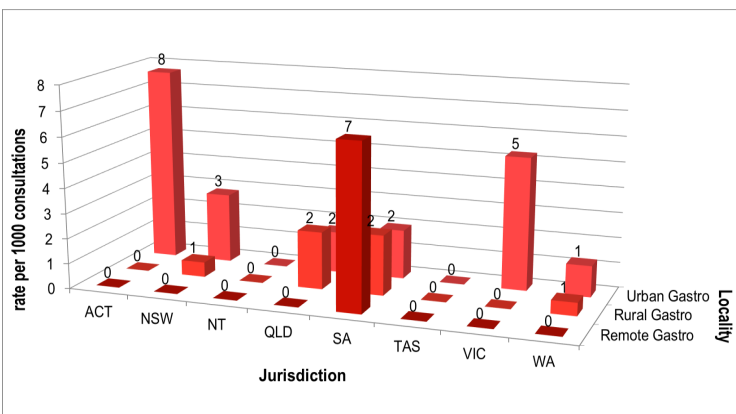


Figure 3. ASPREN rate of gastroenteritis by locality and jurisdiction, weeks 03 - 04, 2023.

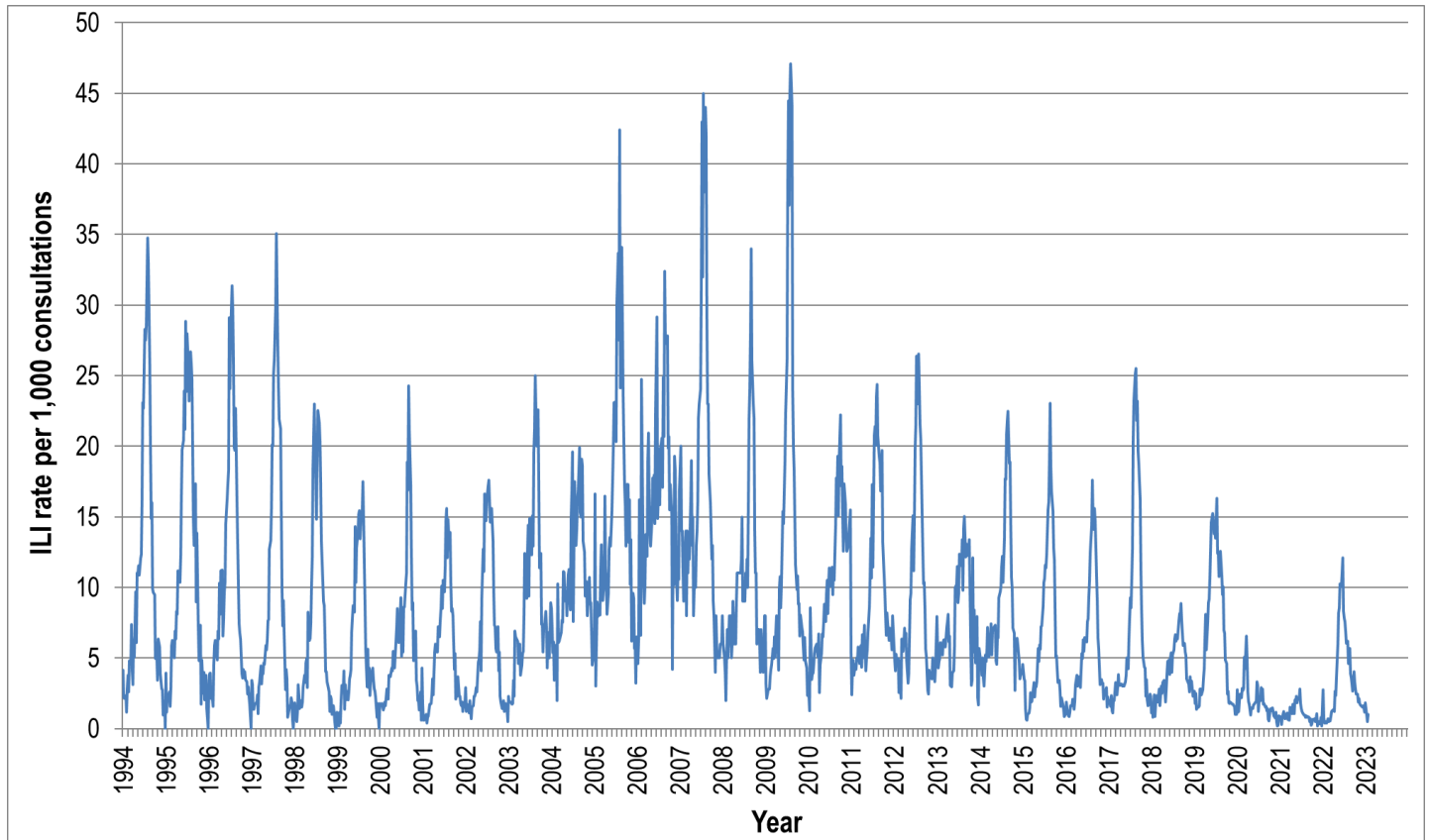


Figure 4. ASPREN ILI rates 1994 - 2023.

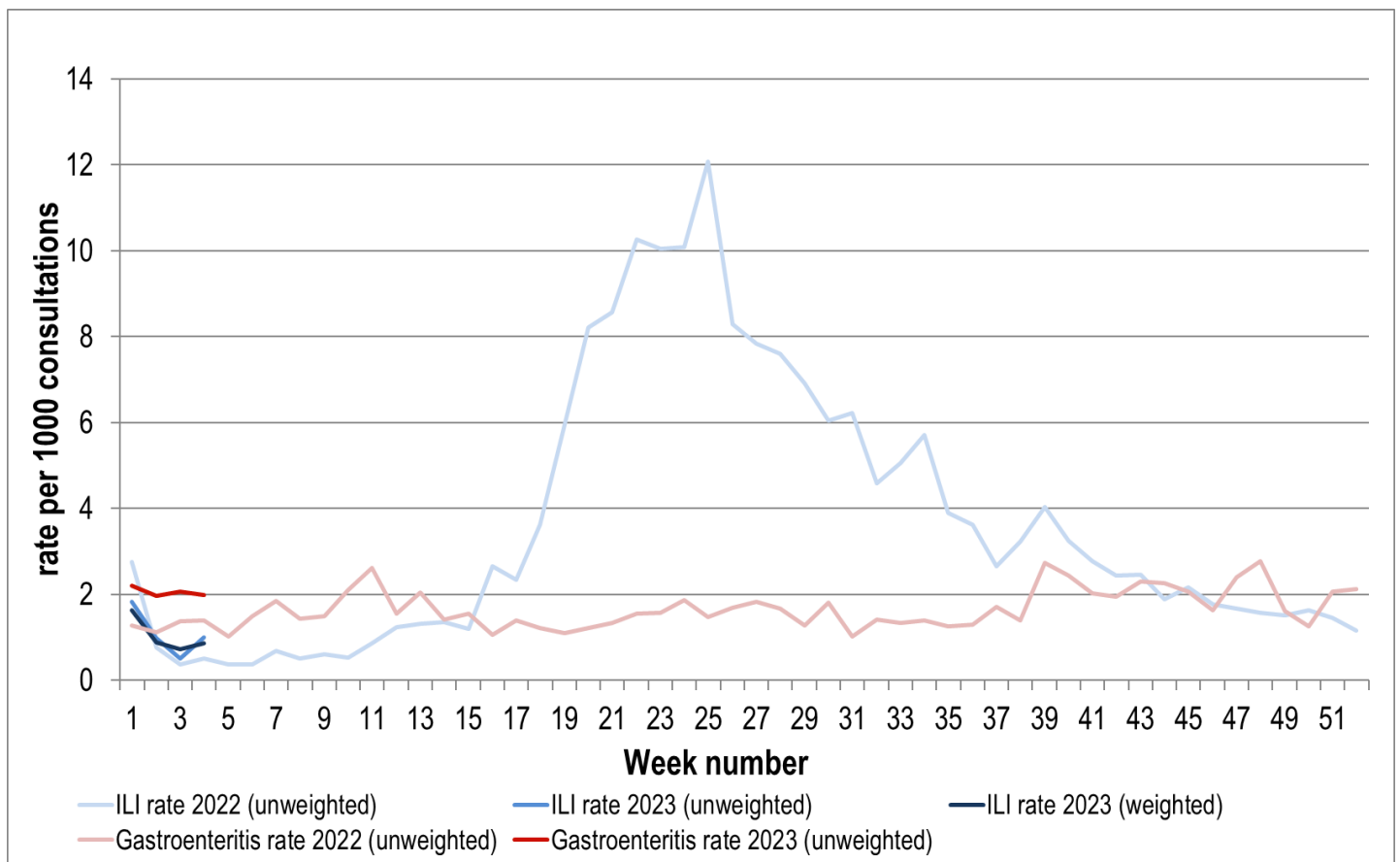


Figure 5. ASPREN ILI and gastroenteritis rates 2022-23. Weighted rates are weighted to account for population size differences between jurisdictions, using population estimates from the 2011 Australian Census.

VIROLOGICAL SURVEILLANCE

33% of all ILI patients were swab tested during weeks 3 and 4 (see Figure 6).

2 cases of Influenza A and 2 cases of SARS-CoV-2 were detected during this period. There were no other respiratory viruses detected (see figure 8).

Viral laboratory data is provided by SA Pathology laboratory.

	Reporting Period	YTD
	16 Jan - 29 Jan 2023	1 Jan - 29 Jan 2023
Total number of ILI notifications	19	53
Number of swab tests performed	6	19
% ILI patients tested	32%	36%
% of swab tests positive for influenza	33%	16%

Figure 6. ASPREN virological surveillance results overview for 2023 #

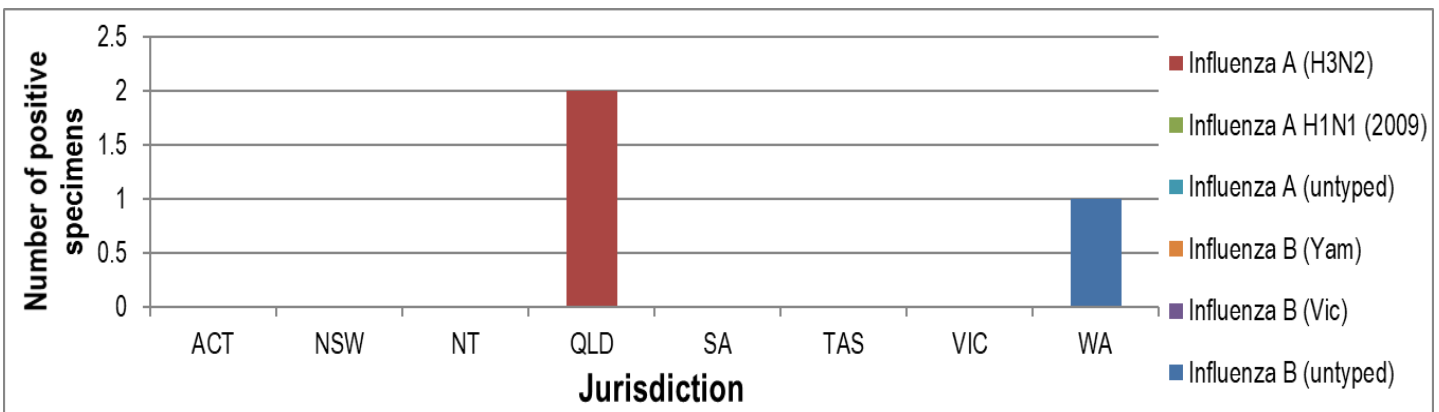


Figure 7. ASPREN influenza subtype analysis by jurisdiction for 2023 #

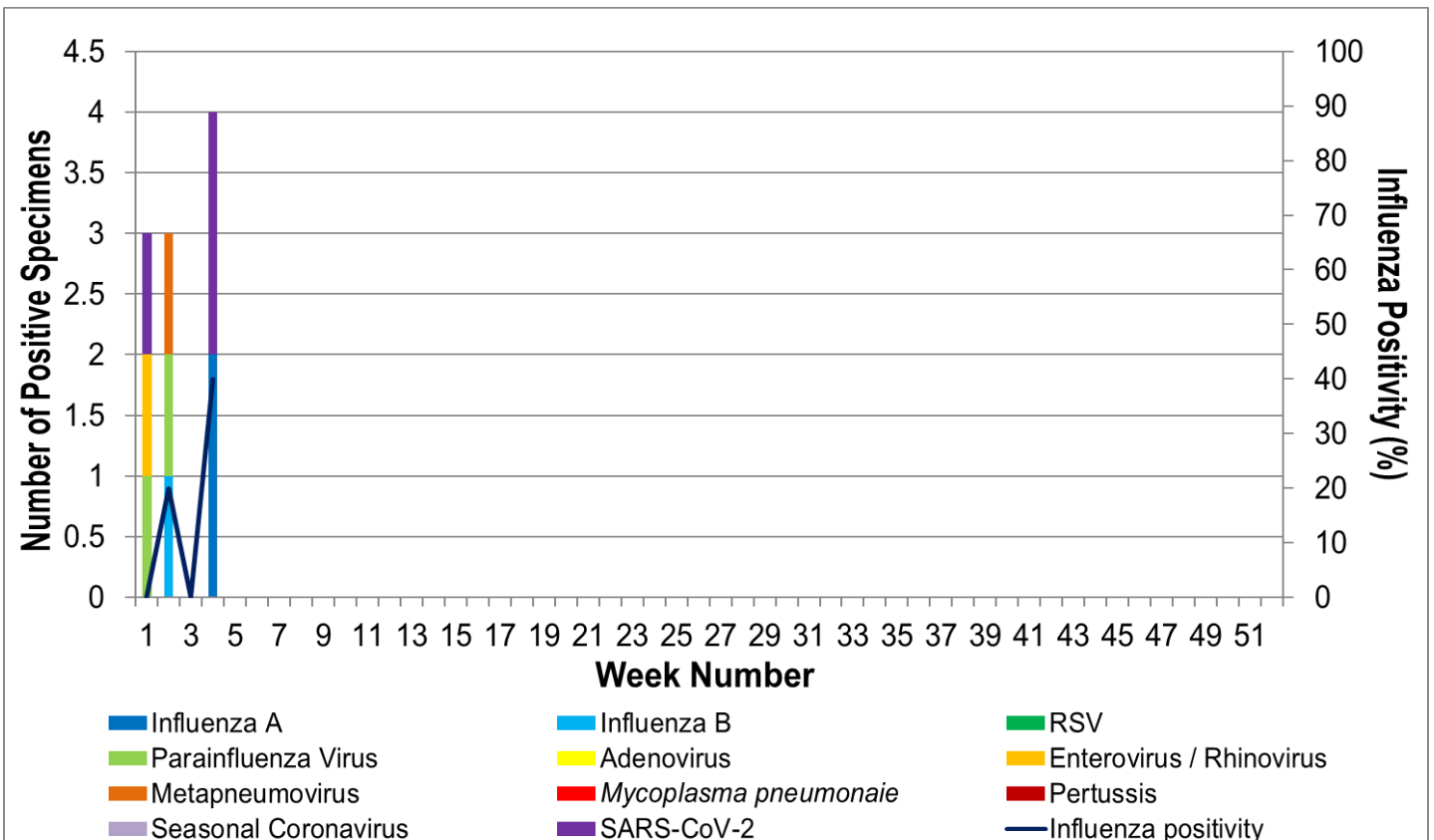


Figure 8. ASPREN, laboratory detection of influenza and other respiratory viruses for 2023 #

The Australian Sentinel Practices Research Network is supported by the Australian Government Department of Health (the Department). The opinions expressed in this paper are those of the authors, and do not necessarily represent the views of the Department.

Please note: This report is based on data available as at 2 Feb 2023. Delays in the reporting of data may cause data to change retrospectively.