

**NATIONAL PRIMARY CARE INFECTIOUS DISEASES  
SENTINEL SURVEILLANCE FORTNIGHTLY REPORT**

Combining data from The Australian Sentinel Practices Research Network (ASPREN)\*  
and the Victorian Sentinel Practitioners Influenza Network (VicSPIN)\*

No. 23, 2017 - 6th — 19th November 2017

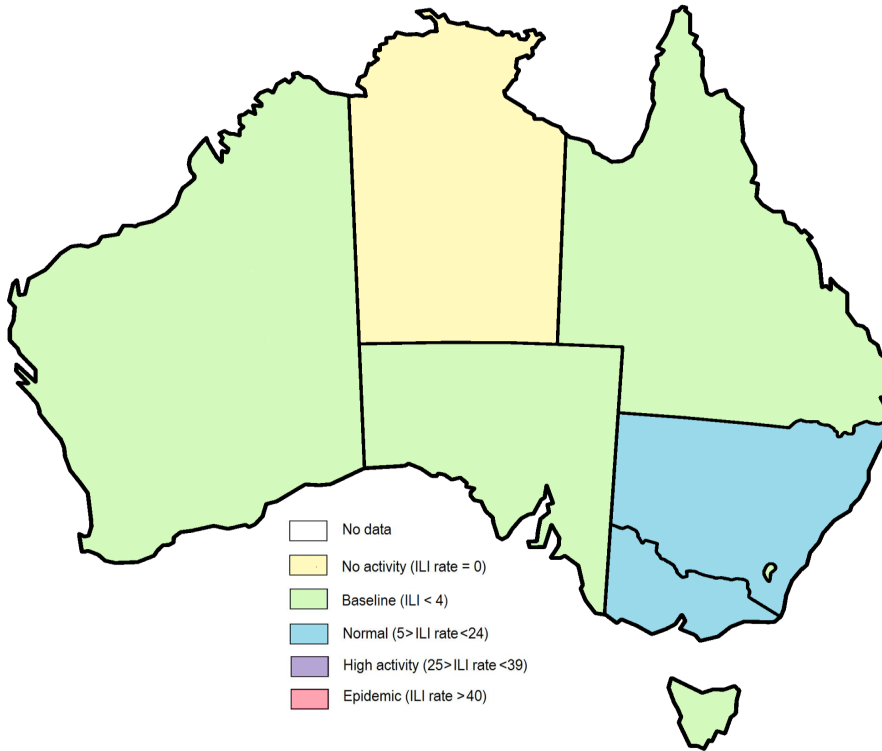


Figure 1. Map of ILI activity by jurisdiction, weeks 45 - 46, 2017.

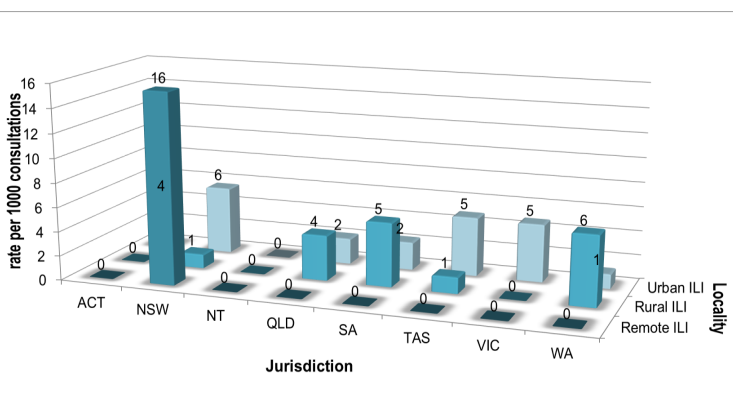


Figure 2. ASPREN + VicSPIN rate of ILI by locality and jurisdiction, weeks 45 - 46, 2017.

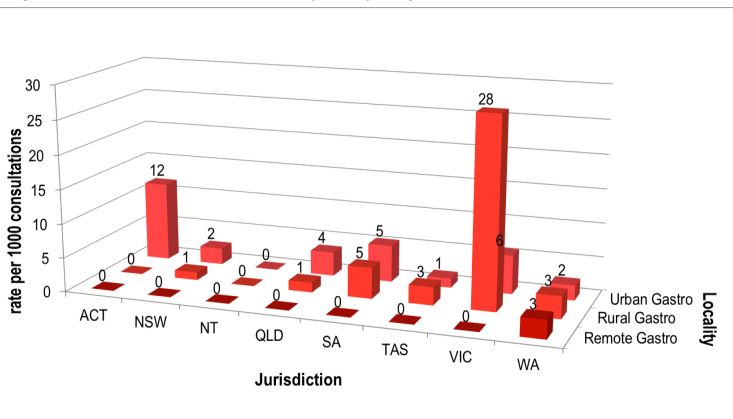


Figure 3. ASPREN rate of gastroenteritis by locality and jurisdiction, weeks 45 - 46, 2017.

**NATIONAL SUMMARY**



Influenza-like-illness levels are decreasing

**5**

Case of influenza have been detected in this reporting period  
1 x Influenza A  
4 x Influenza B

**7%**

Influenza positivity during the reporting period.

**1295**

Cases of influenza have been detected this year:  
822 x Influenza A  
473 x Influenza B



Gastroenteritis levels remain steady at baseline levels

**SYNDROMIC SURVEILLANCE  
REPORTING**

Reports were received from 253 reporters from 8 states and territories during the reporting period. During weeks 45 and 46 reporters saw a total of 38,852 patients.

**INFLUENZA-LIKE-ILLNESS (ILI)**

Nationally, ILI notifications decreased over the period with 128 notifications being reported in weeks 45—46. ILI rates reported in this period decreased to 5 and 3 cases per 1000 consultations (weighted) in weeks 45 and 46 respectively. This was slightly lower than seen in the previous fortnight where rates were 5 and 4 cases per 1000 consultations respectively. For the same reporting period in 2016, ILI rates were lower at 3 cases per 1000 consultations for weeks 45 and 46 (see Fig. 5).

**GASTROENTERITIS**

Nationally, gastroenteritis notifications remained steady over the period with 119 notifications reported. Gastroenteritis rates reported in this period remained steady at 3 cases per 1000 consultations in both weeks 45 and 46, compared to 3 cases per 1000 consultations in both weeks 43 and 44 (see Fig. 5).

\* ASPREN is funded by the Commonwealth's Department of Health, Office of Health Protection, Vaccine Preventable Disease Surveillance Section.

\* VicSPIN is funded by Melbourne Health and the Victorian Infectious Diseases Reference Laboratory.

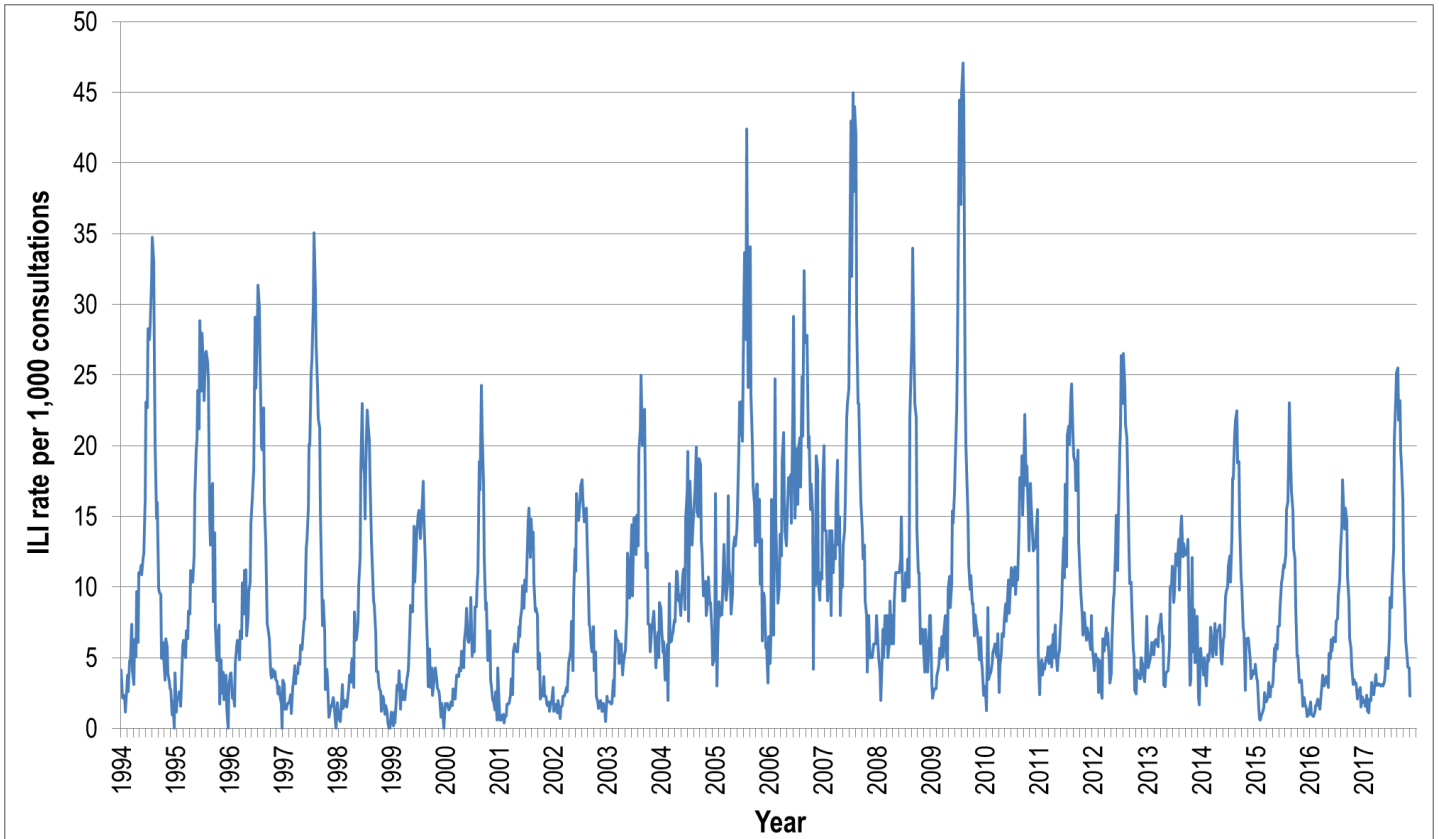


Figure 4. ASPREN ILI rates 1994 - 2017.

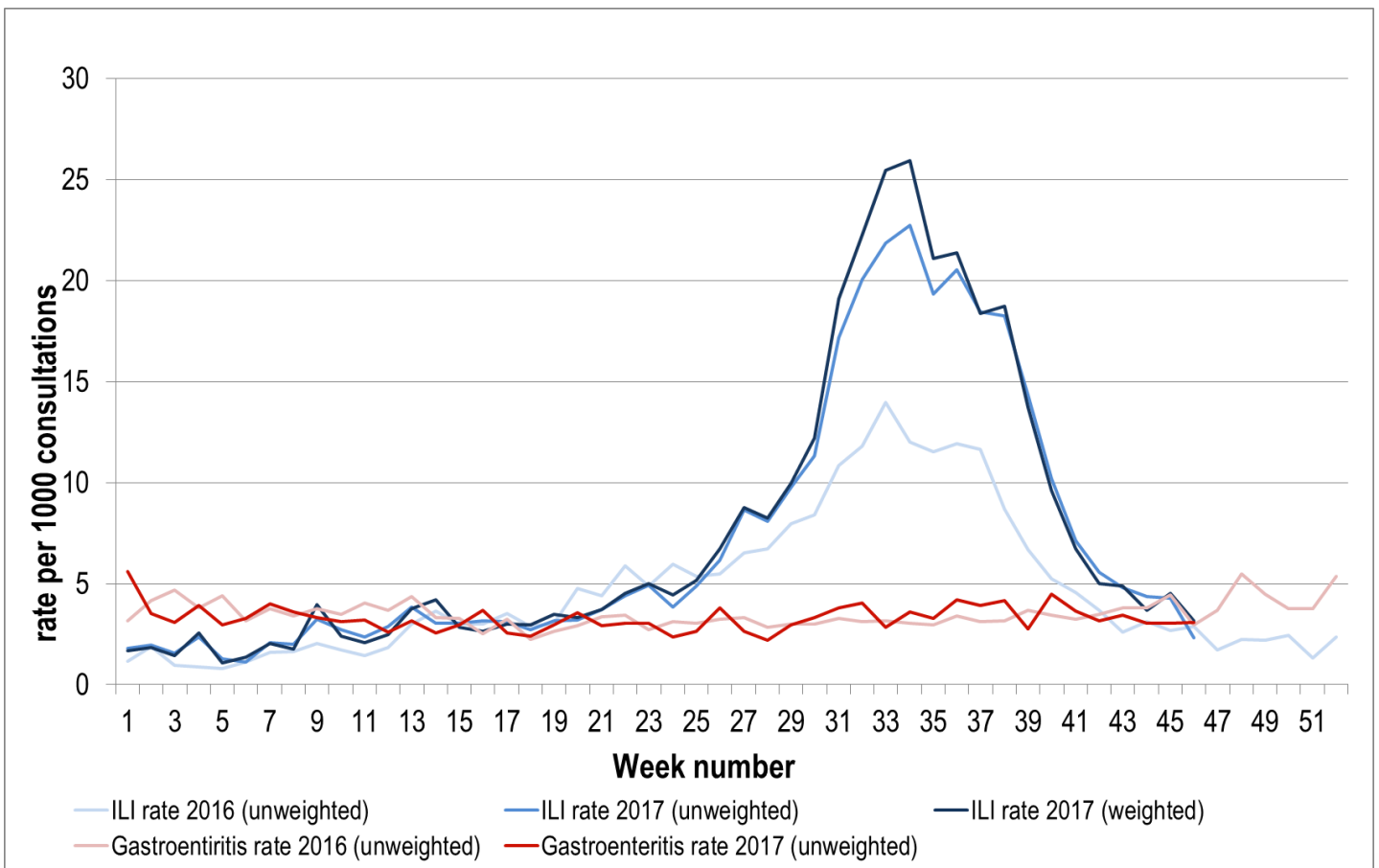


Figure 5. ASPREN + VicSPIN ILI and ASPREN gastroenteritis rates 2016-17.

### VIROLOGICAL SURVEILLANCE

56% of all ILI patients were swab tested during weeks 45 - 46 (see Figure 6). 5 cases of Influenza were detected during this period. Year to date, 99 cases of Influenza A H1N1pdm09 have been detected, 627 cases of Influenza A H3N2, 263 cases of Influenza B Yamagata and 9 cases of Influenza B Victoria have been detected.

# Viral laboratory data are provided by SA Pathology, PathWest and VicSPIN laboratories.

	Reporting Period 6 Nov - 19 Nov 2017	YTD 1 January - 19 Nov 2017
Total number of ILI notifications	128	7708
Number of swab tests performed	72	3191
% ILI patients tested	56%	41%
% of swab tests positive for influenza	7%	41%

Figure 6. ASPREN + VicSPIN virological surveillance results overview for 2017 #

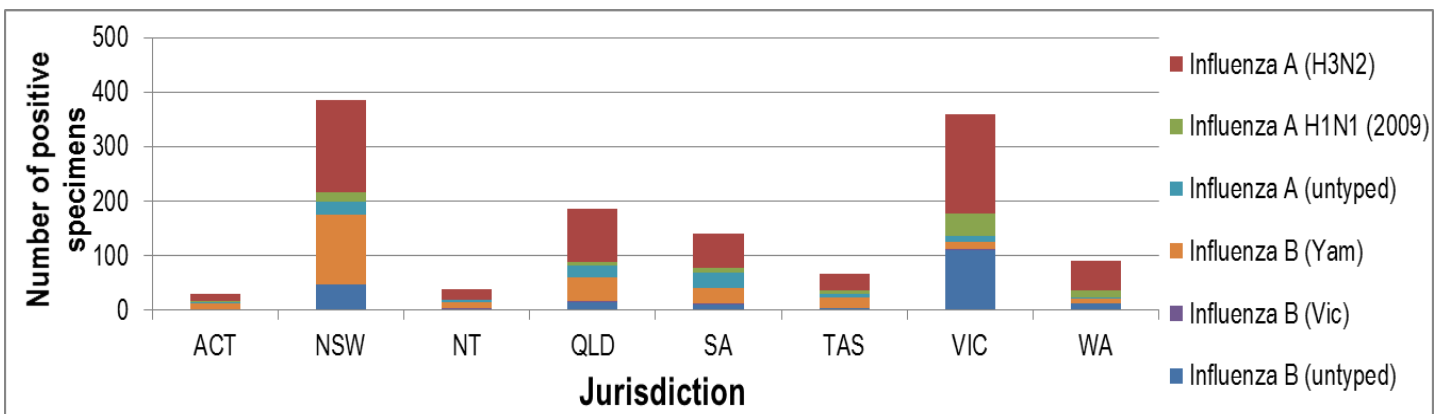


Figure 7. ASPREN + VicSPIN influenza subtype analysis by jurisdiction for 2017 #

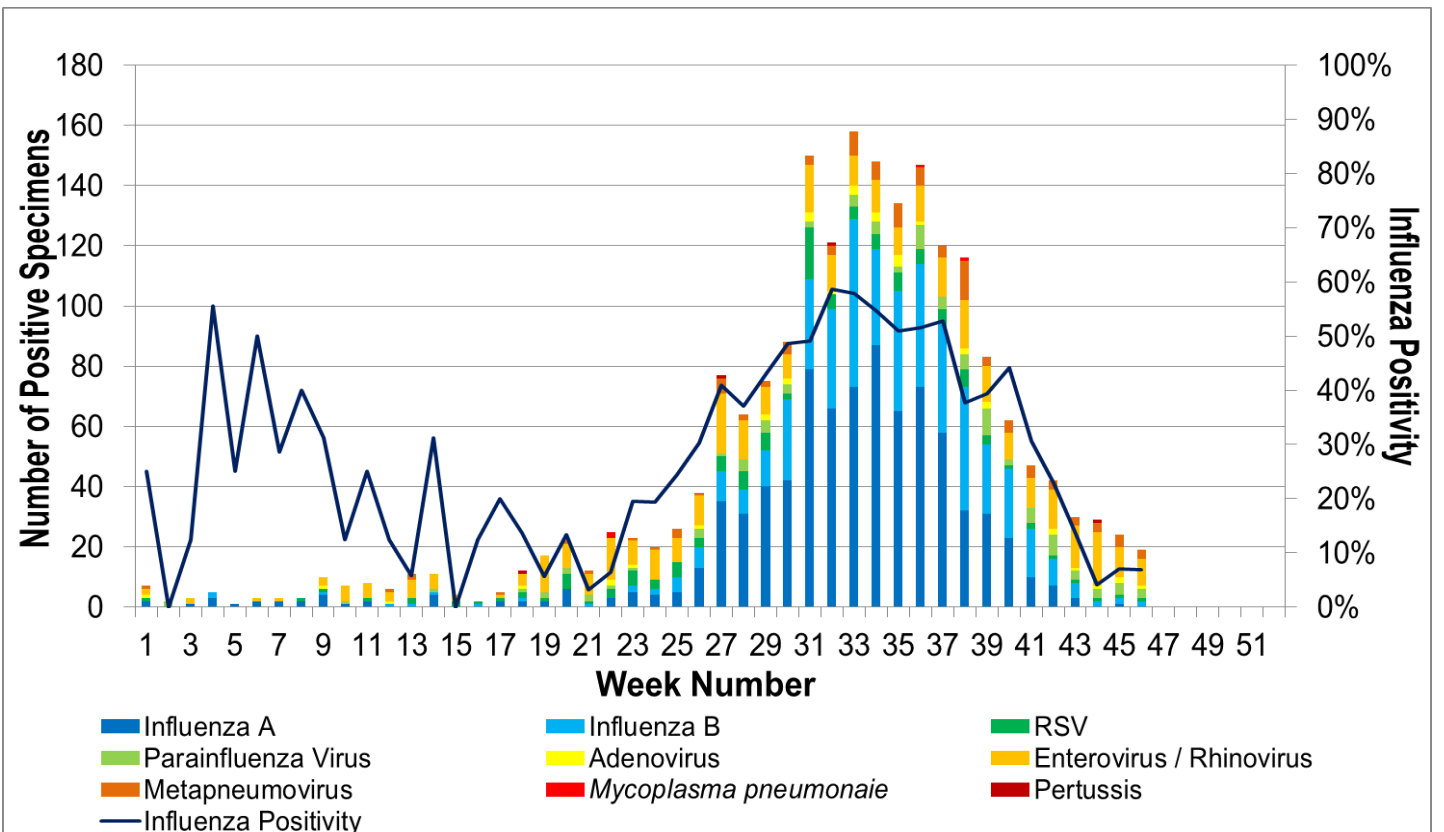


Figure 8. ASPREN, VicSPIN laboratory detection of influenza and other respiratory viruses for 2017 #

The Australian Sentinel Practices Research Network is supported by the Australian Government Department of Health (the Department). The opinions expressed in this paper are those of the authors, and do not necessarily represent the views of the Department