

**NATIONAL PRIMARY CARE INFECTIOUS DISEASES
SENTINEL SURVEILLANCE FORTNIGHTLY REPORT**

Combining data from The Australian Sentinel Practices Research Network (ASPREN)*
and the Victorian Sentinel Practitioners Influenza Network (VicSPIN)*

No. 19, 2017 - 11th September — 24th September 2017

NATIONAL SUMMARY



Influenza-like-illness levels are decreasing

167

Case of influenza have been detected in this reporting period
90 x Influenza A
77 x Influenza B

45%

Influenza positivity during the reporting period.

1133

Cases of influenza have been detected this year:
742 x Influenza A
391 x Influenza B



Gastroenteritis levels remain steady at baseline levels

**SYNDROMIC SURVEILLANCE
REPORTING**

Reports were received from 311 reporters from 8 states and territories during the reporting period. This includes data from GPs reporting to VicSPIN. During weeks 37 and 38 reporters saw a total of 46,160 patients.



Figure 1. Map of ILI activity by jurisdiction, weeks 37 - 38, 2017.

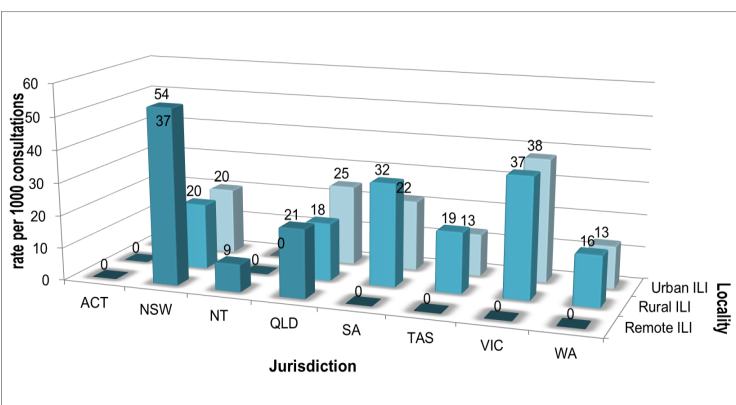


Figure 2. ASPREN + VicSPIN rate of ILI by locality and jurisdiction, weeks 37 - 38, 2017.

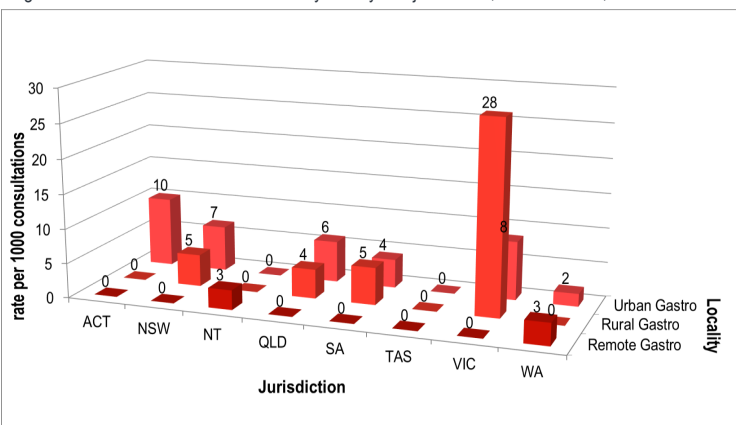


Figure 3. ASPREN rate of gastroenteritis by locality and jurisdiction, weeks 37 - 38, 2017.

INFLUENZA-LIKE-ILLNESS (ILI)

Nationally, ILI notifications decreased over the period with 863 notifications being reported in weeks 37—38. ILI rates reported in this period decreased to 19 cases per 1000 consultations (weighted) in weeks 37 and 38. This was lower than seen in the previous fortnight where rates were 23 and 22 cases per 1000 consultations. For the same reporting period in 2016, ILI rates were lower at 12 and 9 cases per 1000 consultations for weeks 37 and 38 respectively (see Fig. 5).

GASTROENTERITIS

Nationally, gastroenteritis notifications increased over the period with 155 notifications reported. Gastroenteritis rates reported in this period remained steady at 4 and 5 cases per 1000 consultations in both weeks 37 and 38 respectively, compared to 4 and 5 cases per 1000 consultations in both weeks 35 and 36 respectively (see Fig. 5).

* ASPREN is funded by the Commonwealth's Department of Health, Office of Health Protection, Vaccine Preventable Disease Surveillance Section.

* VicSPIN is funded by Melbourne Health and the Victorian Infectious Diseases Reference Laboratory.

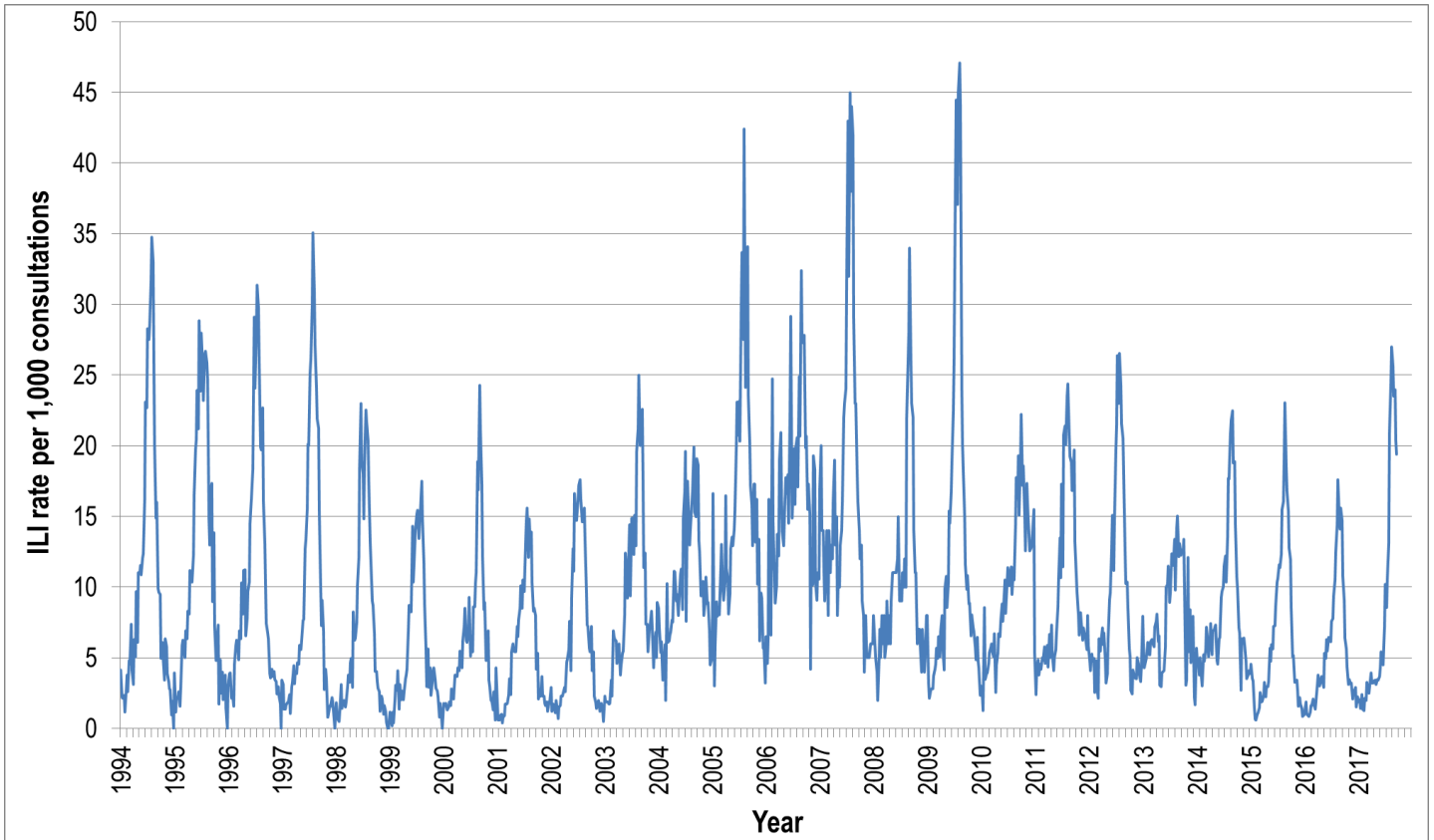


Figure 4. ASPREN ILI rates 1994 - 2017.

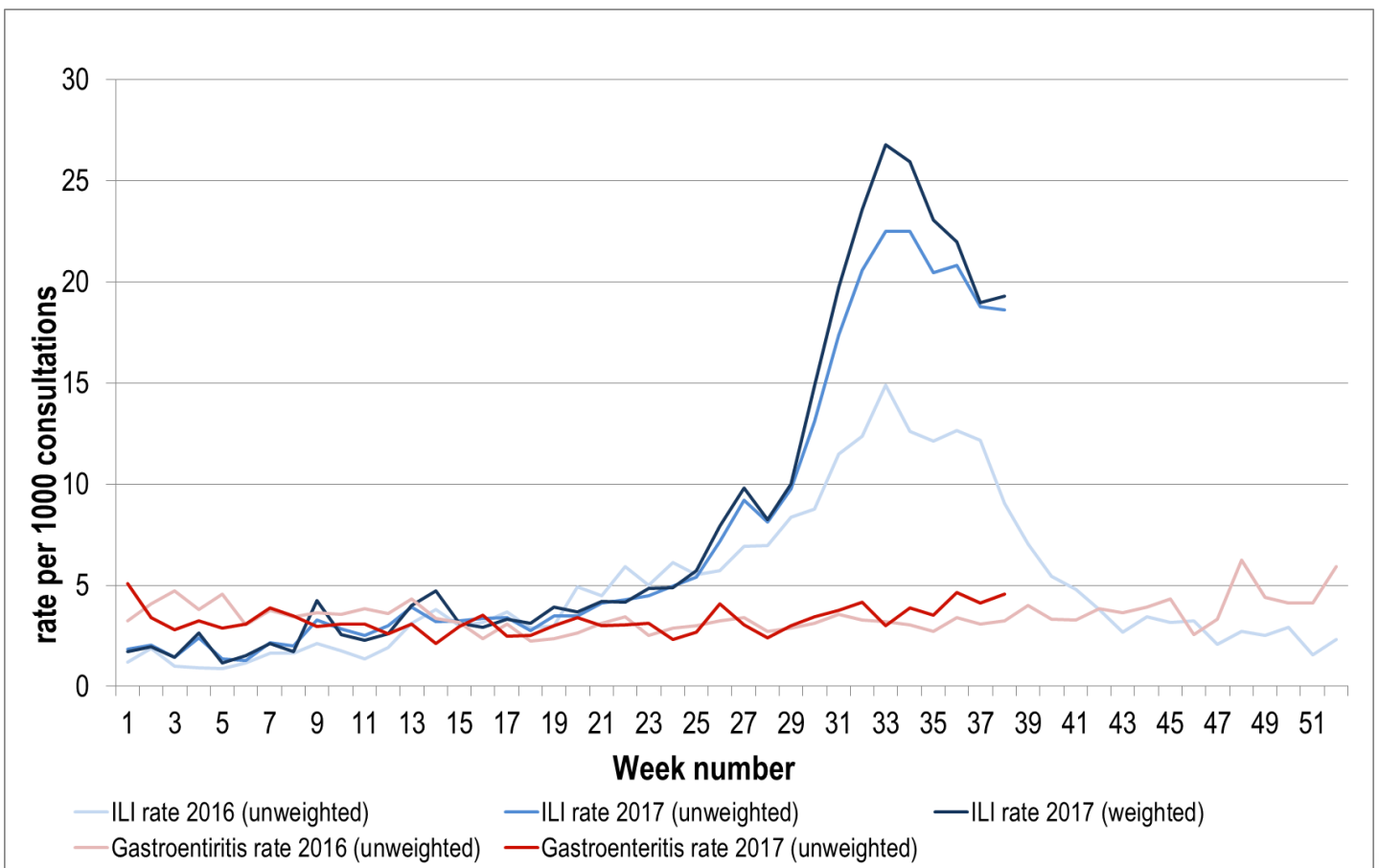


Figure 5. ASPREN + VicSPIN ILI and ASPREN gastroenteritis rates 2016-17.

VIROLOGICAL SURVEILLANCE

45% of all ILI patients were swab tested during weeks 37 - 38 (see Figure 6). 167 cases of Influenza were detected during this period. Year to date, 82 cases of Influenza A H1N1pdm09 have been detected, 496 cases of Influenza A H3N2, 147 cases of Influenza B Yamagata and 6 cases of Influenza B Victoria have been detected. Influenza A H3N2 is the most commonly circulating subtype at present.

Viral laboratory data are provided by SA Pathology, PathWest and VicSPIN laboratories.

	Reporting Period	YTD
	11 Sept - 24 Sept 2017	1 January - 24 Sept 2017
Total number of ILI notifications	863	5938
Number of swab tests performed	372	2615
% ILI patients tested	43%	44%
% of swab tests positive for influenza	45%	43%

Figure 6. ASPREN + VicSPIN virological surveillance results overview for 2017 #

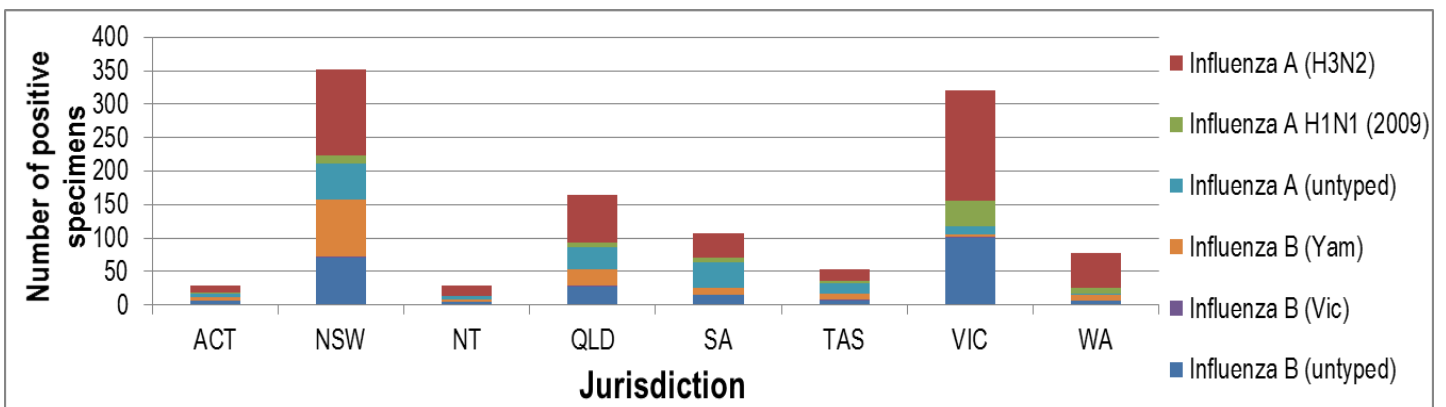


Figure 7. ASPREN + VicSPIN influenza subtype analysis by jurisdiction for 2017 #

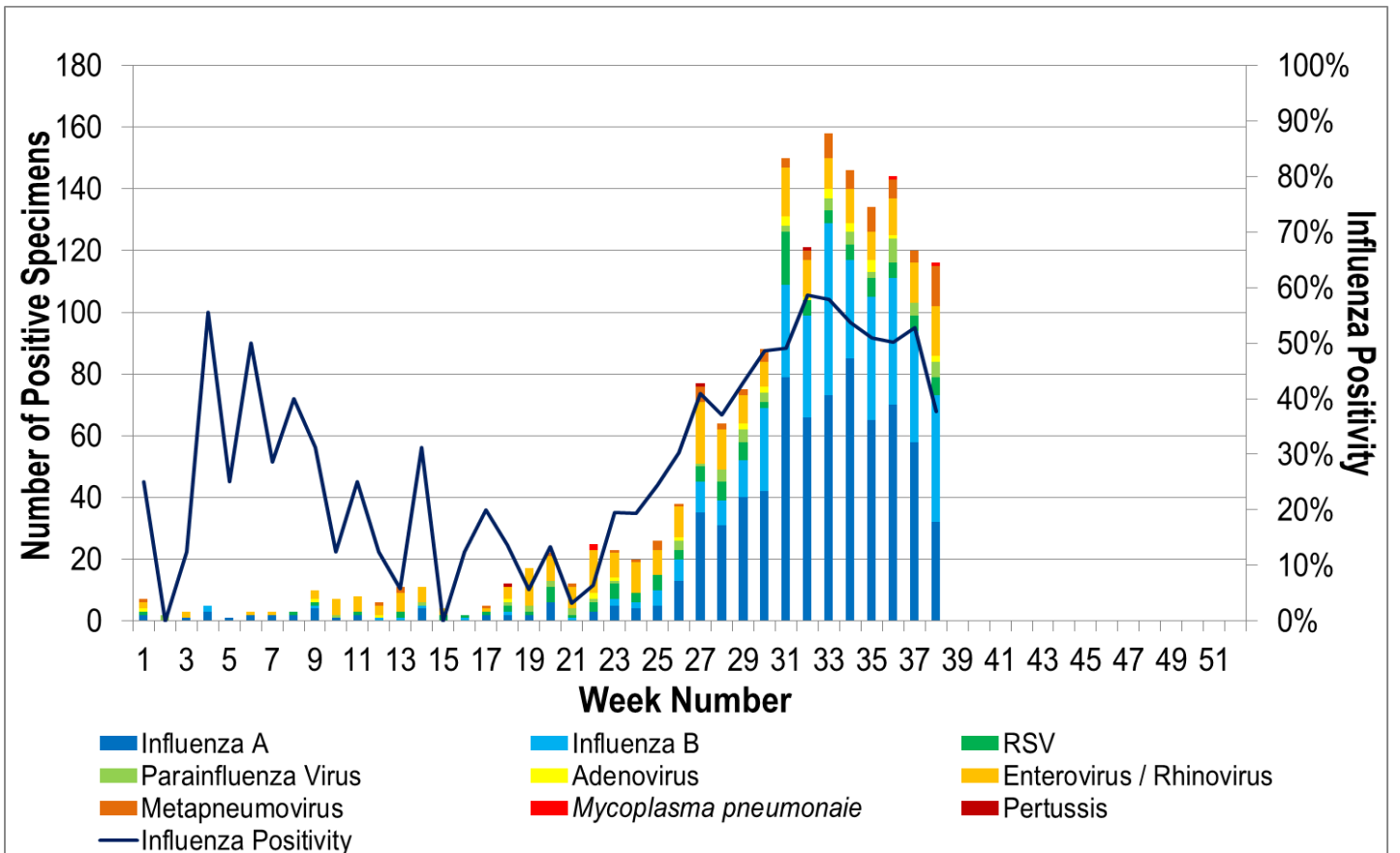


Figure 8. ASPREN, VicSPIN laboratory detection of influenza and other respiratory viruses for 2017 #

Please note: This report is based on data available as at 12 October 2017. Delays in the reporting of data may cause data to change retrospectively.