

**NATIONAL PRIMARY CARE INFECTIOUS DISEASES  
SENTINEL SURVEILLANCE FORTNIGHTLY REPORT**

Combining data from The Australian Sentinel Practices Research Network (ASPREN)\*  
and the Victorian Sentinel Practitioners Influenza Network (VicSPIN)\*

No. 18, 2017 - 28th August—10th September 2017

**NATIONAL SUMMARY**



Influenza-like-illness levels are decreasing

**216**

Case of influenza have been detected in this reporting period  
135 x Influenza A  
81 x Influenza B

**51%**

Influenza positivity during the reporting period.

**966**

Cases of influenza have been detected this year:  
652 x Influenza A  
314 x Influenza B



Gastroenteritis levels remain steady at baseline levels

**SYNDROMIC SURVEILLANCE  
REPORTING**

Reports were received from 316 reporters from 8 states and territories during the reporting period. This includes data from GPs reporting to VicSPIN. During weeks 35 and 36 reporters saw a total of 47,945 patients.

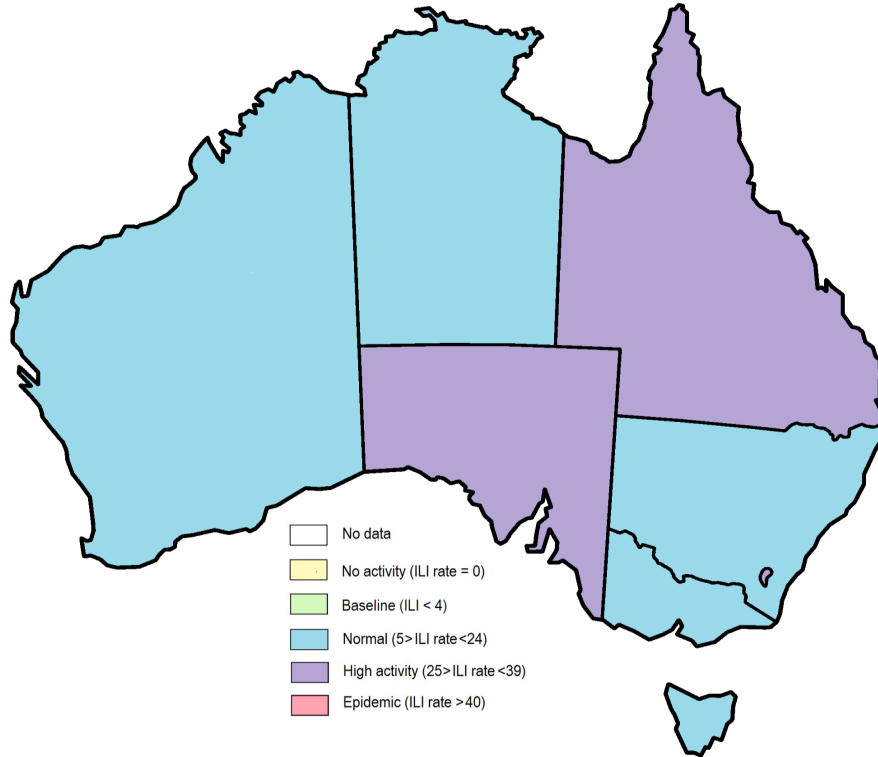


Figure 1. Map of ILI activity by jurisdiction, weeks 35 - 36, 2017.

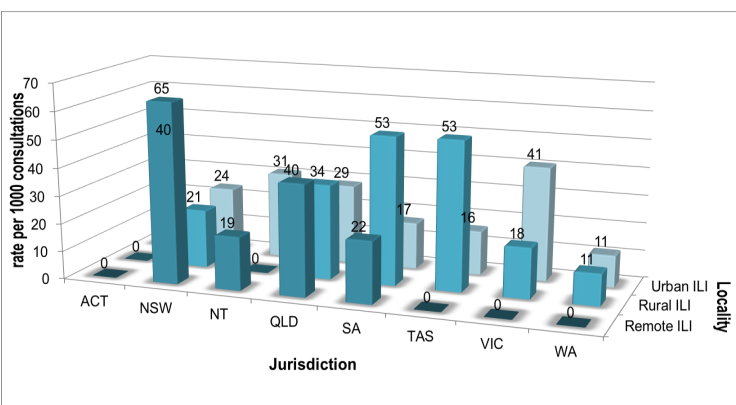


Figure 2. ASPREN + VicSPIN rate of ILI by locality and jurisdiction, weeks 35 - 36, 2017.

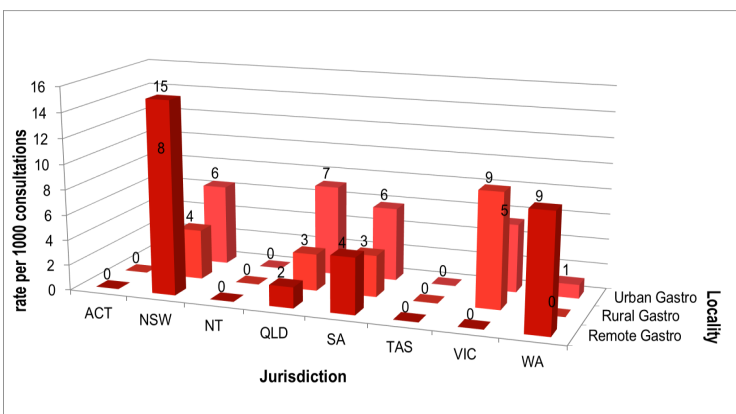


Figure 3. ASPREN rate of gastroenteritis by locality and jurisdiction, weeks 35 - 36, 2017.

**INFLUENZA-LIKE-ILLNESS (ILI)**

Nationally, ILI notifications decreased over the period with 989 notifications being reported in weeks 35—36. ILI rates reported in this period decreased to 23 and 22 cases per 1000 consultations (weighted) in weeks 35 and 36 respectively. This was lower than the rates seen in the previous fortnight where rates were 27 and 26 cases per 1000 consultations. For the same reporting period in 2016, ILI rates were lower at 14 and 12 cases per 1000 consultations for weeks 35 and 36 respectively (see Fig. 5).

**GASTROENTERITIS**

Nationally, gastroenteritis notifications increased over the period with 145 notifications reported. Gastroenteritis rates reported in this period remained steady at 4 and 5 cases per 1000 consultations in both weeks 35 and 36 respectively, compared to 4 cases per 1000 consultations for both weeks 33 and 34 (see Fig. 5).

\* ASPREN is funded by the Commonwealth's Department of Health, Office of Health Protection, Vaccine Preventable Disease Surveillance Section.

\* VicSPIN is funded by Melbourne Health and the Victorian Infectious Diseases Reference Laboratory.

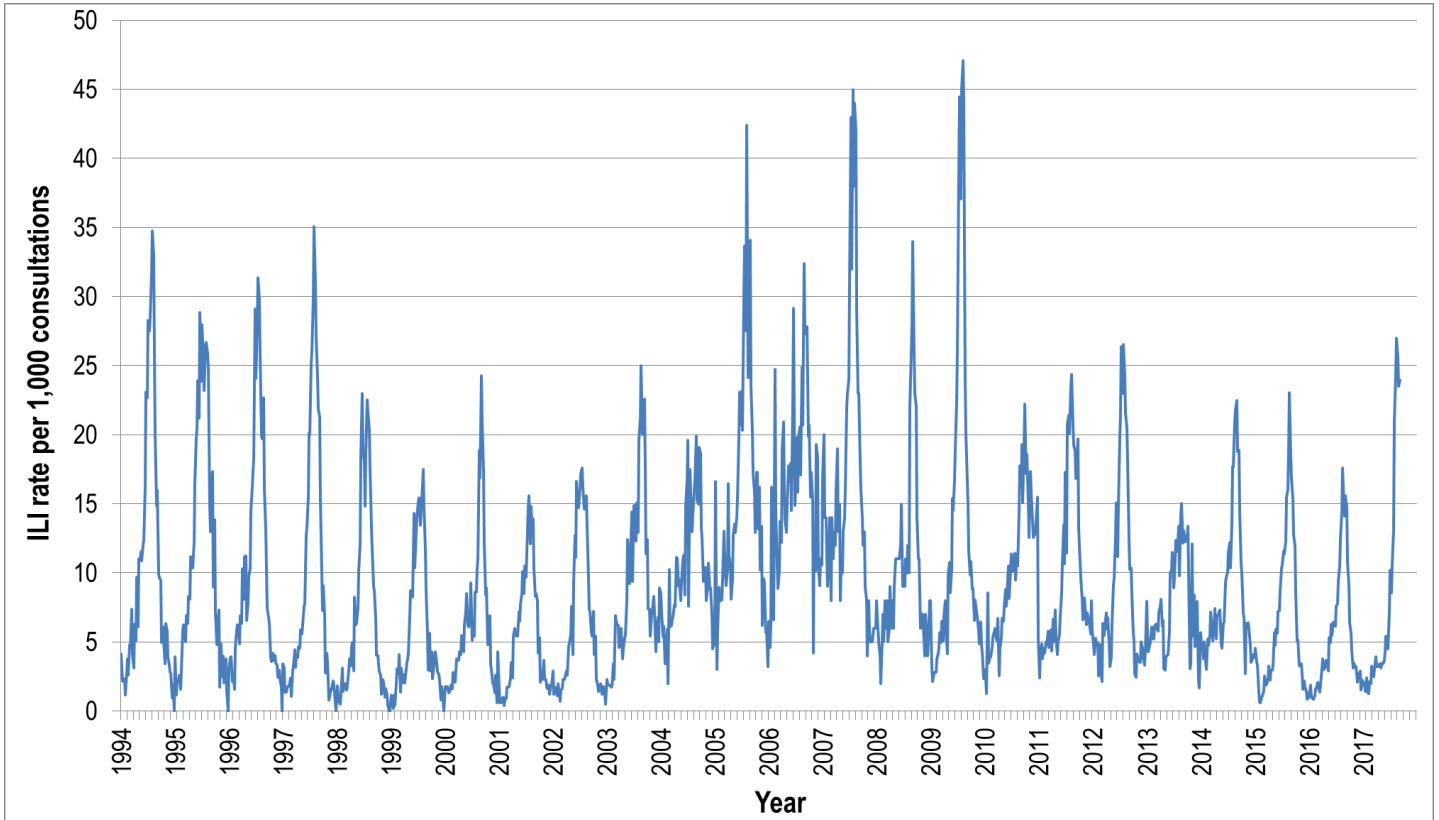


Figure 4. ASPREN ILI rates 1994 - 2017.

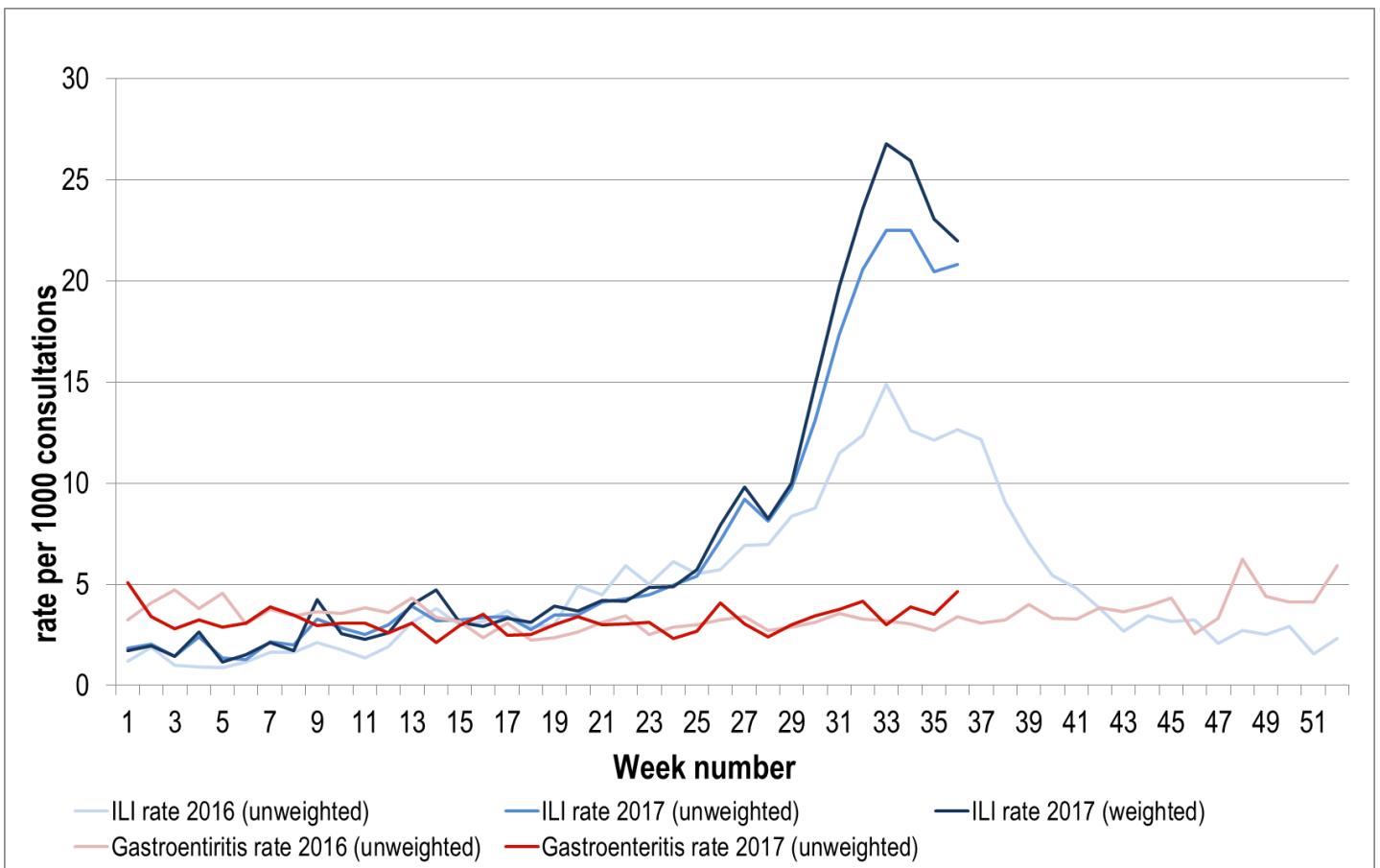


Figure 5. ASPREN + VicSPIN ILI and ASPREN gastroenteritis rates 2016-17.

### VIROLOGICAL SURVEILLANCE

51% of all ILI patients were swab tested during weeks 35 - 36 (see Figure 6). 216 cases of Influenza were detected during this period. Year to date, 79 cases of Influenza A H1N1pdm09 have been detected, 464 cases of Influenza A H3N2, 142 cases of Influenza B Yamagata and 6 cases of Influenza B Victoria have been detected. Influenza A H3N2 is the most commonly circulating subtype at present.

# Viral laboratory data are provided by SA Pathology, PathWest and VicSPIN laboratories.

	Reporting Period	YTD
	28 August - 10 Sept 2017	1 January - 10 Sept 2017
Total number of ILI notifications	989	5075
Number of swab tests performed	427	2243
% ILI patients tested	43%	44%
% of swab tests positive for influenza	51%	43%

Figure 6. ASPREN + VicSPIN virological surveillance results overview for 2017 #

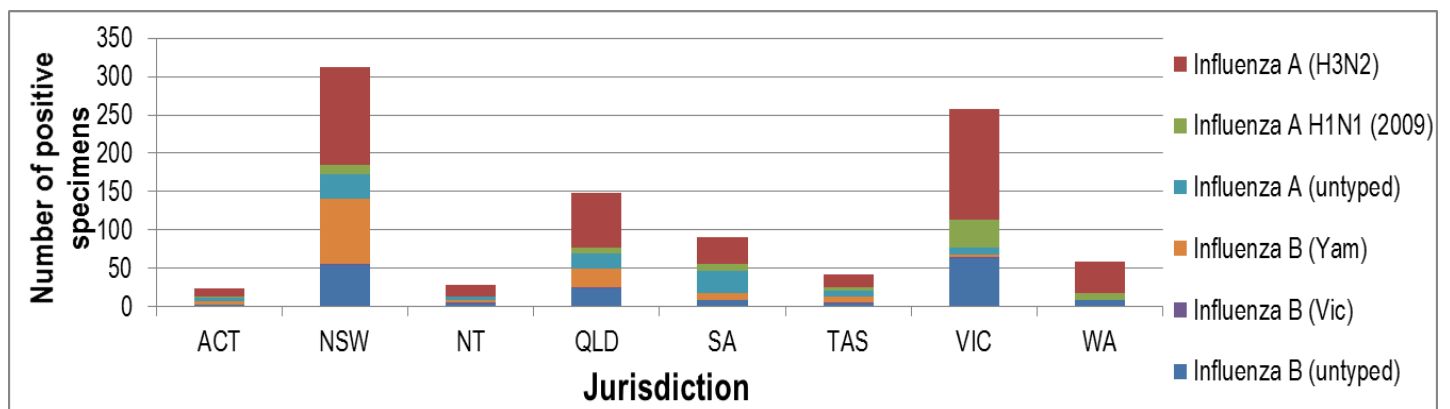


Figure 7. ASPREN + VicSPIN influenza subtype analysis by jurisdiction for 2017 #

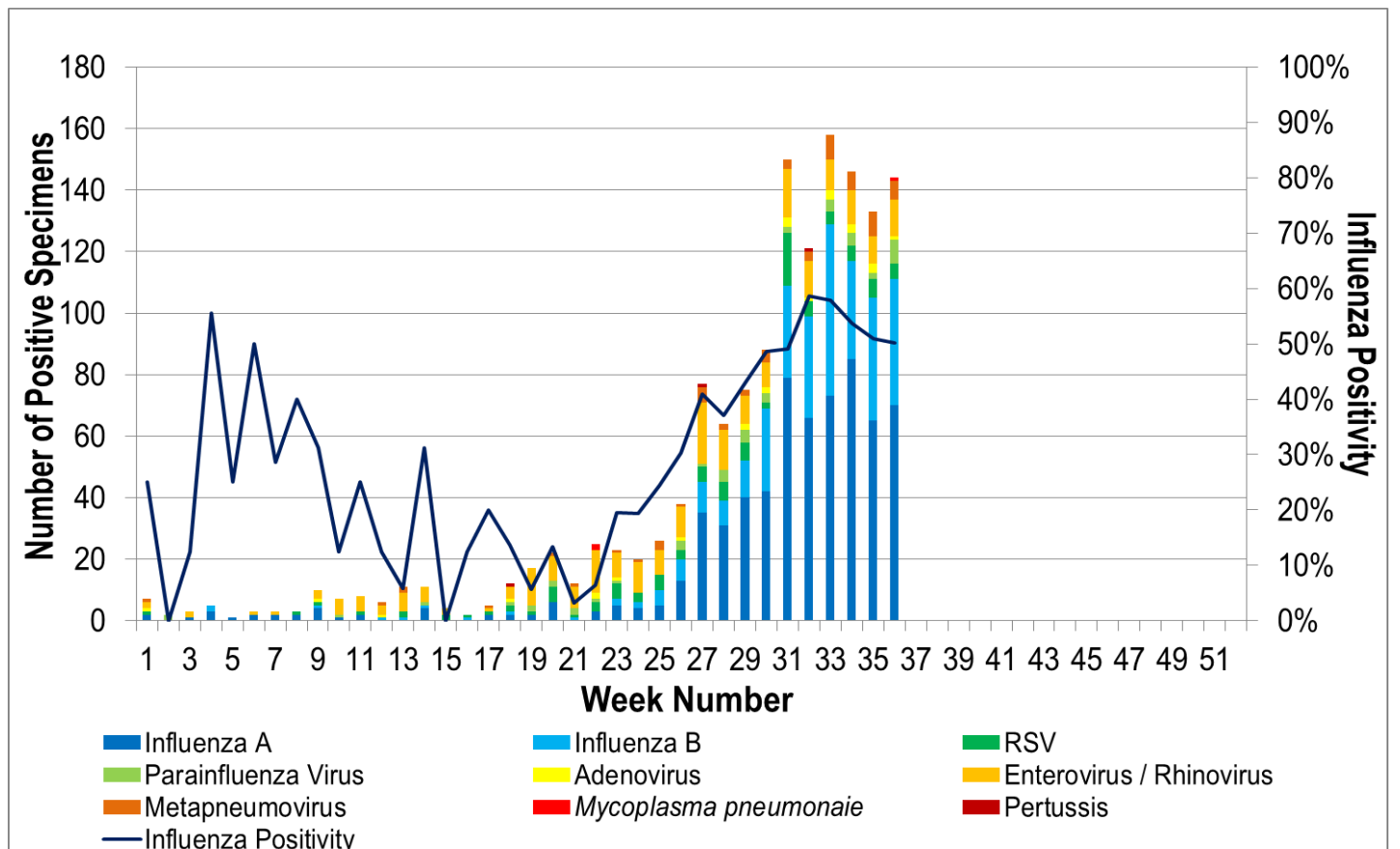


Figure 8. ASPREN, VicSPIN laboratory detection of influenza and other respiratory viruses for 2017 #