

**NATIONAL PRIMARY CARE INFECTIOUS DISEASES
SENTINEL SURVEILLANCE FORTNIGHTLY REPORT**

Combining data from The Australian Sentinel Practices Research Network (ASPREN)*
and the Victorian Sentinel Practitioners Influenza Network (VicSPIN)*

No. 16, 2017 - 1st—13th August 2017

NATIONAL SUMMARY



Influenza-like-illness levels are increasing

208

Case of influenza have been detected in this reporting period
145 x Influenza A
63 x Influenza B

53%

Influenza positivity during the reporting period.

504

Cases of influenza have been detected this year:
359 x Influenza A
145 x Influenza B



Gastroenteritis levels remain steady at baseline levels

**SYNDROMIC SURVEILLANCE
REPORTING**

Reports were received from 304 reporters from 8 states and territories during the reporting period. This includes data from GPs reporting to VicSPIN. During weeks 31 and 32 reporters saw a total of 45,807 patients.

INFLUENZA-LIKE-ILLNESS (ILI)

Nationally, ILI notifications increased over the period with 867 notifications being reported in weeks 31—32. ILI rates reported in this period increased to 20 cases per 1000 consultations (weighted) in week 31 and 24 cases per 1000 consultations (weighted) for week 32. This was higher than the rates seen in the previous fortnight where rates were 10 and 15 cases per 1000 consultations. For the same reporting period in 2016, ILI rates were lower at 12 and 13 cases per 1000 consultations for weeks 31 and 32 respectively (see Fig. 5).

GASTROENTERITIS

Nationally, gastroenteritis notifications increased over the period with 136 notifications reported. Gastroenteritis rates reported in this period remained steady at 4 cases per 1000 consultations in both weeks 31 and 32, compared to 3 cases per 1000 consultations for both weeks 29 and 30 (see Fig. 5).

* ASPREN is funded by the Commonwealth's Department of Health, Office of Health Protection, Vaccine Preventable Disease Surveillance Section.

* VicSPIN is funded by Melbourne Health and the Victorian Infectious Diseases Reference Laboratory.

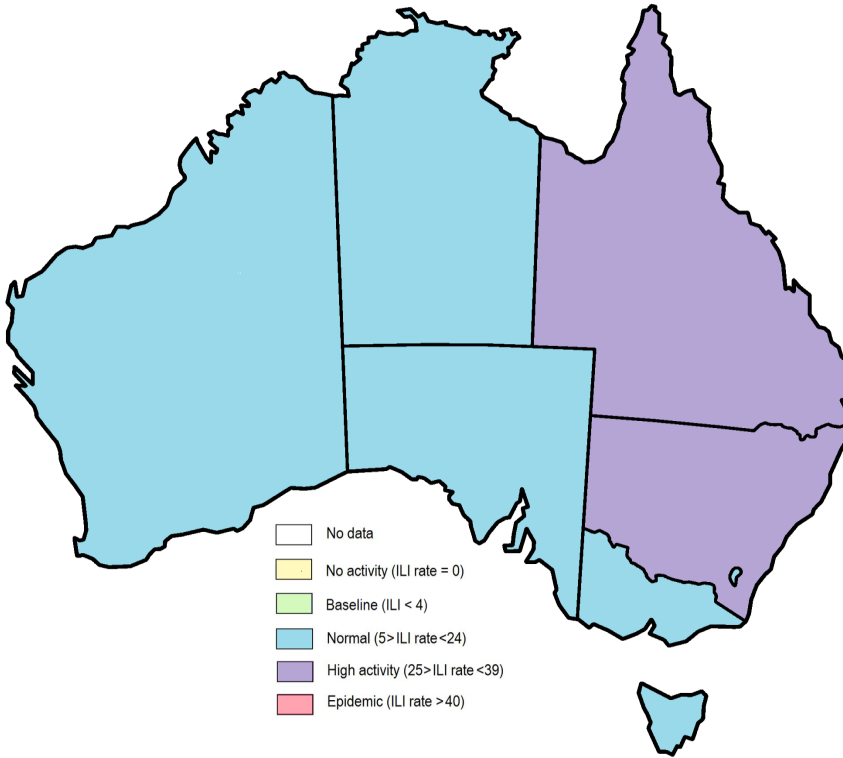


Figure 1. Map of ILI activity by jurisdiction, weeks 31 - 32, 2017.

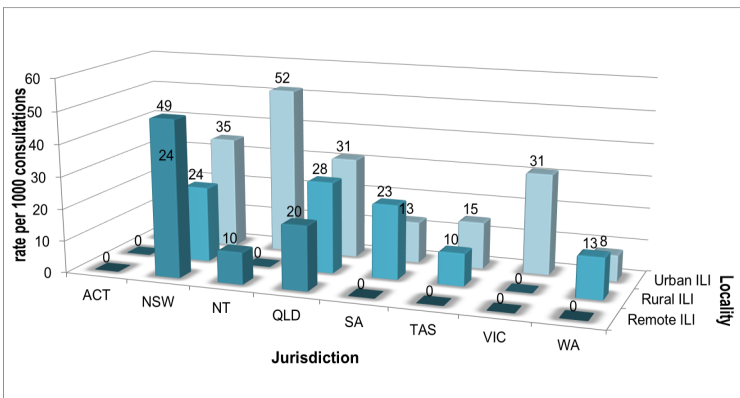


Figure 2. ASPREN + VicSPIN rate of ILI by locality and jurisdiction, weeks 31 - 32, 2017.

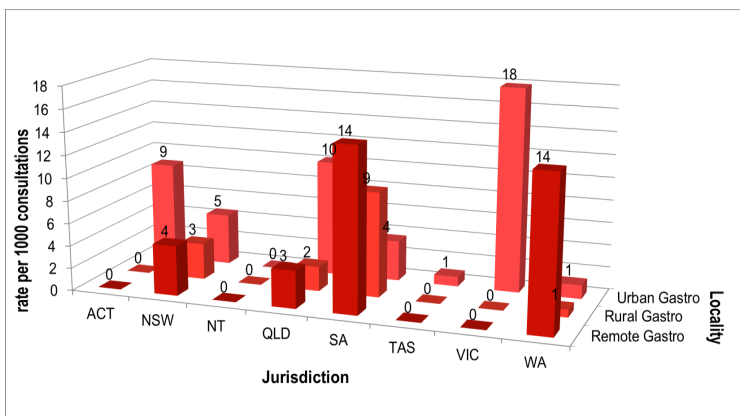


Figure 3. ASPREN rate of gastroenteritis by locality and jurisdiction, weeks 31 - 32, 2017.

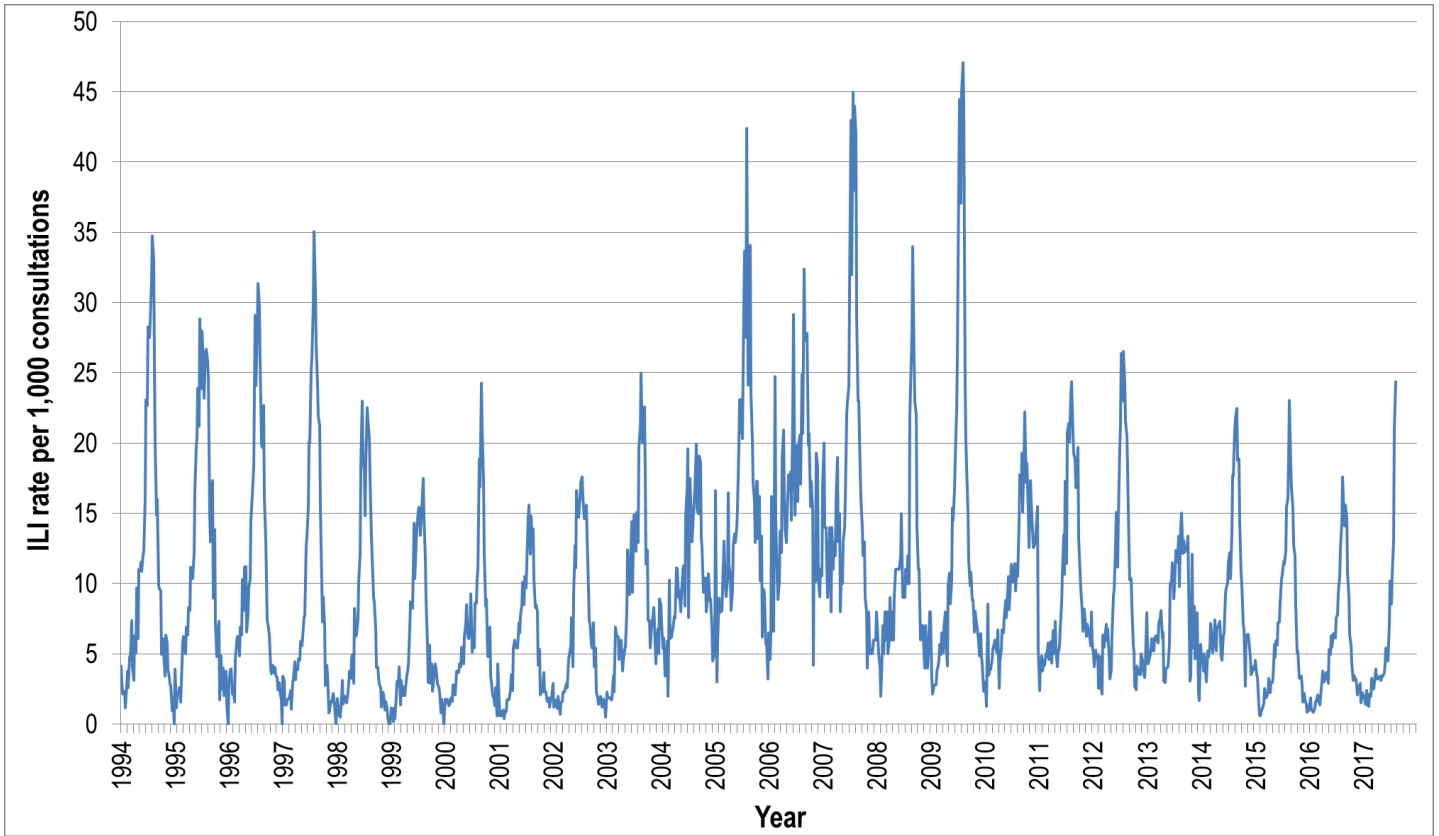


Figure 4. ASPREN ILI rates 1994 - 2017.

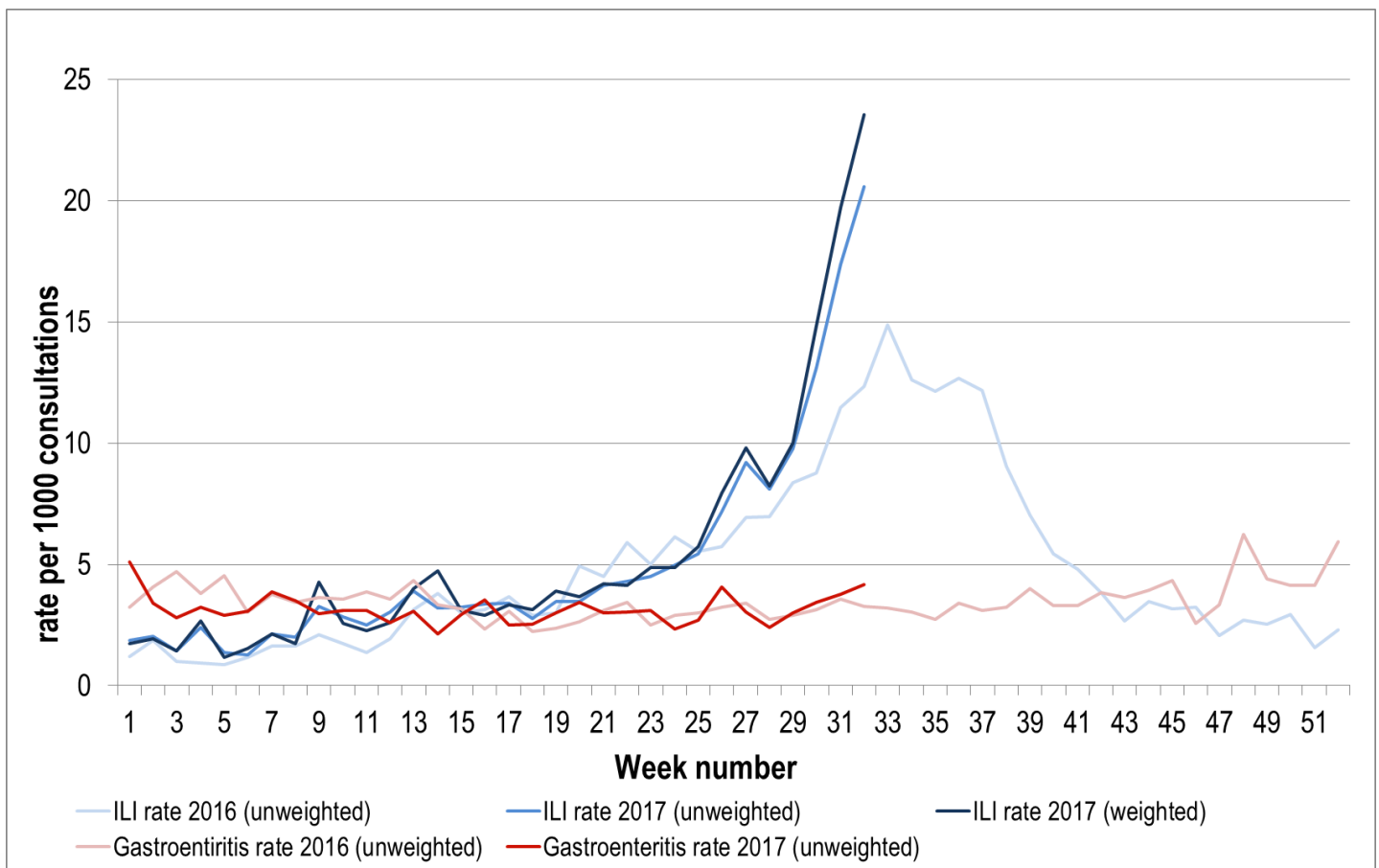


Figure 5. ASPREN + VicSPIN ILI and ASPREN gastroenteritis rates 2016-17.

VIROLOGICAL SURVEILLANCE

45% of all ILI patients were swab tested during weeks 31 - 32 (see Figure 6). 208 cases of Influenza were detected during this period. Year to date, 53 cases of Influenza A H1N1pdm09 have been detected, 240 cases of Influenza A H3N2, 33 cases of Influenza B Yamagata and 2 cases of Influenza B Victoria have been detected. Influenza A H3N2 is the most commonly circulating subtype at present.

Viral laboratory data are provided by SA Pathology, PathWest and VIDRL laboratories.

	Reporting Period	YTD
	1 August - 13 August 2017	1 January - 13 August 2017
Total number of ILI notifications	867	3031
Number of swab tests performed	391	1375
% ILI patients tested	45%	45%
% of swab tests positive for influenza	53%	37%

Figure 6. ASPREN + VicSPIN virological surveillance results overview for 2017 #

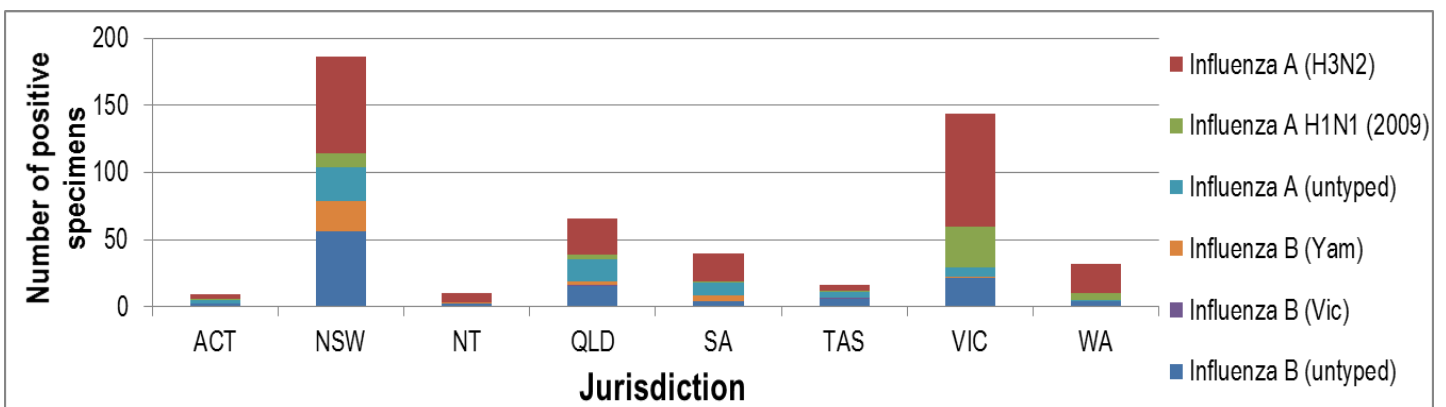


Figure 7. ASPREN + VicSPIN influenza subtype analysis by jurisdiction for 2017 #

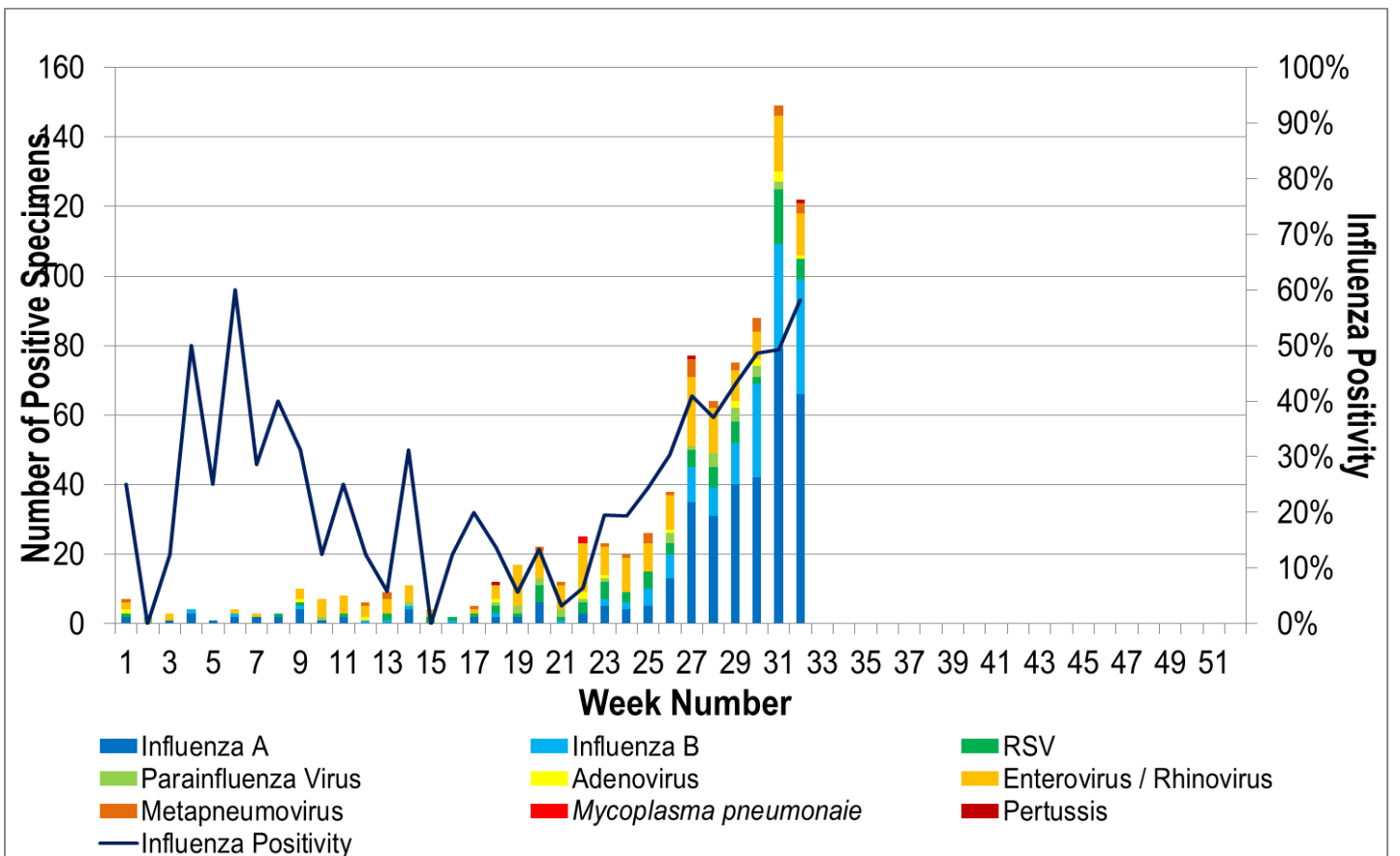


Figure 8. ASPREN, VicSPIN laboratory detection of influenza and other respiratory viruses for 2017 #